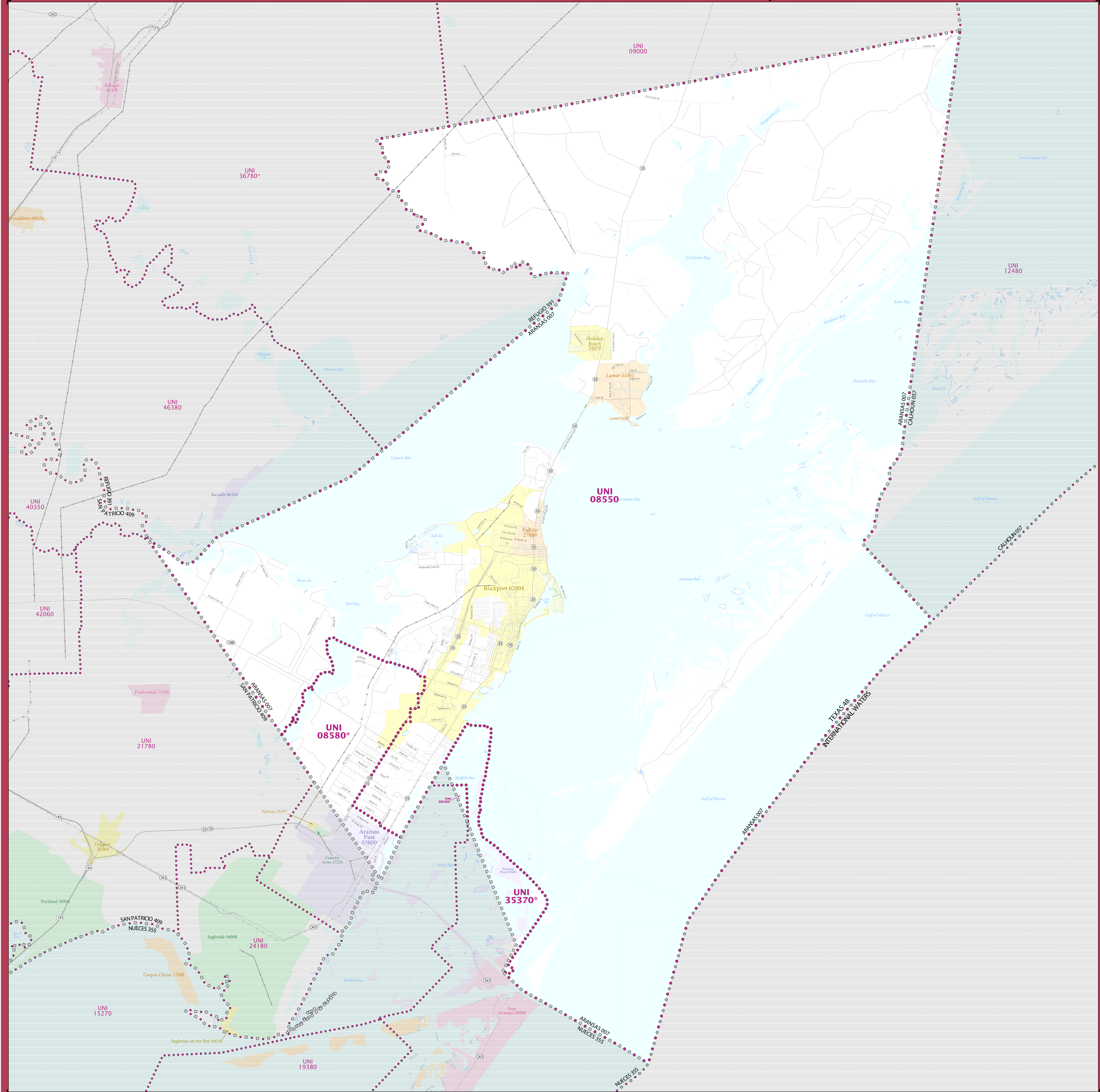


2020 CENSUS - SCHOOL DISTRICT REFERENCE MAP: Aransas County, TX



LEGEND

| SYMBOL DESCRIPTION | SYMBOL | LABEL STYLE |
|---|-----------|-----------------------|
| International | ☆☆☆☆☆ | CANADA |
| Federal American Indian Reservation | ■ ■ ■ ■ ■ | L'ANSE RES 1880 |
| Off-Reservation Trust Land | ■ ■ ■ ■ ■ | T1880 |
| State American Indian Reservation | ■ ■ ■ ■ ■ | Tama Res 9400 |
| Alaska Native Regional Corporation | +++++ | NANA ANRC 52120 |
| State (or statistically equivalent entity) | | NEW YORK 36 |
| County (or statistically equivalent entity) | □ □ □ □ □ | ERIE 029 |
| Minor Civil Division (MCD) ^{1,2} | ○ ○ ○ ○ ○ | Bristol town 07485 |
| Consolidated City | ○ ○ ○ ○ ○ | MILFORD 47500 |
| Incorporated Place ^{3,4} | ■ ■ ■ ■ ■ | Davis 18100 |
| Census Designated Place (CDP) ³ | ■ ■ ■ ■ ■ | Incline Village 35100 |
| Unified School District ⁴ | ● ● ● ● ● | UNI 03370 |
| Secondary School District ⁴ | — — — — — | SEC 99965 |
| Elementary School District ⁴ | — — — — — | ELM 02220 |

| DESCRIPTION | SYMBOL | DESCRIPTION | SYMBOL |
|---|---------------|--|---------------|
| Interstate | — 2 — | Water Body | Pleasant Lake |
| U.S. Highway | — 2 — | Military | Port Belvoir |
| State Highway or State Road | — 2 — | National or State Park, Forest, or Recreation Area | Yosemite NP |
| Other Road | — — — — — | Inset Area | A1 |
| RWD Trail, Stairway, Alley, Walkway, or Ferry | — — — — — | Outside Subject Area | |
| Railroad | — + — + — + — | | |
| Pipeline or Power Line | — — — — — | | |
| Ridge or Fence | — — — — — | | |
| Nonvisible Boundary or Feature Not Elsewhere Classified | — — — — — | | |

Where international, state, county, and/or MCD boundaries coincide, the map shows the boundary symbol for only the highest-ranking of these boundaries.

Geographic area names are followed by either their FIPS or census code.

1 MCD boundaries are shown in the following states in which some or all MCDs function as general-purpose governmental units: Connecticut, Illinois, Indiana, Kansas, Maine, Massachusetts, Michigan, Minnesota, Missouri, Nebraska, New Hampshire, New Jersey, New York, North Dakota, Ohio, Pennsylvania, Rhode Island, South Dakota, Vermont, and Wisconsin. (Note that Illinois and Nebraska have some counties covered by nongovernmental precincts and Missouri has most counties covered by nongovernmental townships.)

2 A " " following an MCD name denotes a false MCD. A " " following a place name indicates that a false MCD exists with the same name and FIPS code as the place; the false MCD label is not shown.

3 Place label color corresponds to the place fill color.

4 A " " following a label indicates that the school district is in more than one county.

Due to space limitations, some areas and features such as water bodies, parks, and roads may not be labeled.

SUBJECT AREA SCHOOL DISTRICTS ON MAP SHEET

| TYPE | CODE | NAME |
|------|-------|--|
| UNI | 08550 | Aransas County Independent School District |
| UNI | 08580 | Aransas Pass Independent School District |
| UNI | 35370 | Port Aransas Independent School District |

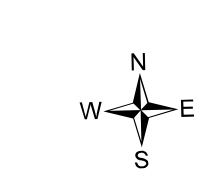
All legal boundaries and names are as of January 1, 2020. The boundaries shown on this map are for Census Bureau statistical data collection and tabulation purposes only; their depiction and designation for statistical purposes does not constitute a determination of jurisdictional authority or rights of ownership or entitlement.

Geographic Vintage: 2020 Census (reference date: January 1, 2020)
 Data Source: U.S. Census Bureau's MA7/TIGER database (T4820)
 Map Created by Geography Division: December 22, 2020

U.S. DEPARTMENT OF COMMERCE U.S. Census Bureau

Projection: Albers Equal Area Conic
 Datum: NAD 83
 Spheroid: GRS 80
 1st Standard Parallel: 27 36 51
 2nd Standard Parallel: 34 43 24
 Central Meridian: -100 04 35
 Latitude of Projection's Origin: 25 50 13
 False Easting: 0
 False Northing: 0

The plotted map scale is 1:63,323



Sheet 1 of 1 PARENT sheets
 Total Sheets: 1 (Index 0; Parent 1; Inset 0)

NAME: Aransas County (007)
 ENTITY TYPE: County or statistically equivalent entity
 ST: Texas (48)

2020 CENSUS SD REF MAP (PARENT)
 Sheet ID: 251548007001