



WEEDON ISLAND PRESERVE

Weedon Island Preserve Cultural and Natural History Center

1800 Weedon Drive NE, St. Petersburg, FL 33702



Visitor Guide

Weedon Island Preserve's

mission is to balance ecological and cultural conservation and protection with the passive recreational needs of the public.

Approximately 3,200 acres managed by the Pinellas County Parks and Conservation Resources department, the preserve is a mosaic of rich mangrove forests, open mud flats and salterns, pine/scrubby flatwoods and maritime hammocks. Enjoy the many natural wonders rich with wading and water birds, native plants and state listed species like the gopher tortoise.

The preserve has a long and colorful history with many changes. It was once home to prehistoric people ("Weeden" Island culture), a movie studio, an airport, a speakeasy and private residences. Land speculators came and went and trash was dumped and cleaned up. What remains today is the direct result of a long-term commitment by volunteers, citizens, industry and governments to protect this land for its ecological and cultural richness.

In July 1972, Weedon Island was placed on the National Register of Historic Places. It officially opened as Weedon Island State Preserve in 1980. In 1993, the state and county entered into a lease agreement bringing the management of the preserve under the direction of Pinellas County.

Center Hours:

- Visit www.weedonislandpreserve.org or call (727) 453-6500 for current hours.
- Closed on all county holidays.

Preserve Hours:

- Open daily, 7 a.m. to time posted, approximately 15 minutes before sunset.
- Daily closing time is posted at the entrance to the preserve.
- Closed day after Thanksgiving and December 25.

Wild animals live here; domestic pets are NOT allowed.

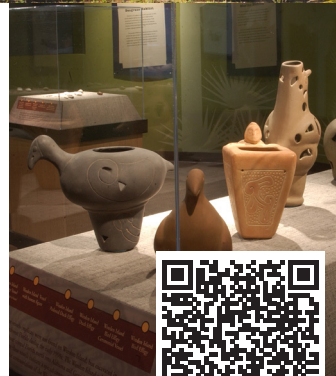
Weedon Island Preserve Cultural and Natural History Center

Understanding the natural and cultural history of the preserve empowers citizens to make informed decisions about the environment and demonstrates how people and the natural world shape each other. The center offers this opportunity through interpretive tours and hikes, programs, exhibits, presentations and workshops, and other events.

Designed with the help of Native Americans, and keeping with their tradition, the orientation of the center in the landscape is along the four cardinal points of the compass, with the entrance facing east. A special curved wall is representative of the remarkable pottery of the early "Weeden" people who lived on the island some 1000 to 1800 years ago. The roof lines resemble the curved wings of a bird as it soars through the sky.

Completed in 2002, the center blends the past and present into a truly exciting experience. The Native American and early European history of the preserve is fascinating and helped shape the preserve as we know it today. Come explore the center's exhibits and learn how we still depend on the Tampa Bay estuary through workshops and presentations.

To hear an audio about Weedon Island Preserve, scan this QR code or visit: www.weedonislandpreserve.org/audio_tours/WeedonEntrance.mp3



www.weedonislandpreserve.org

Pinellas County complies with the Americans with Disabilities Act. To obtain accessible formats of this document, please call (727) 464-4062 (V/TDD). 4/22



A Pinellas County Government Program

Weedon Island Preserve is located along the shores of Old Tampa Bay. This coastal system, comprised of aquatic and upland ecosystems, is home to numerous species of flora and fauna, an outstanding environmental education facility and a rich cultural history. Come experience *A Place to Remember*





The Rules

- All plants and animals are protected under Pinellas County Code (PCC), Chapter 90 - 50.
- Releasing animals into the preserve is illegal.
- Stay on marked trails.
- Park only in designated areas.
- Place trash in designated containers.

The following are **PROHIBITED**:

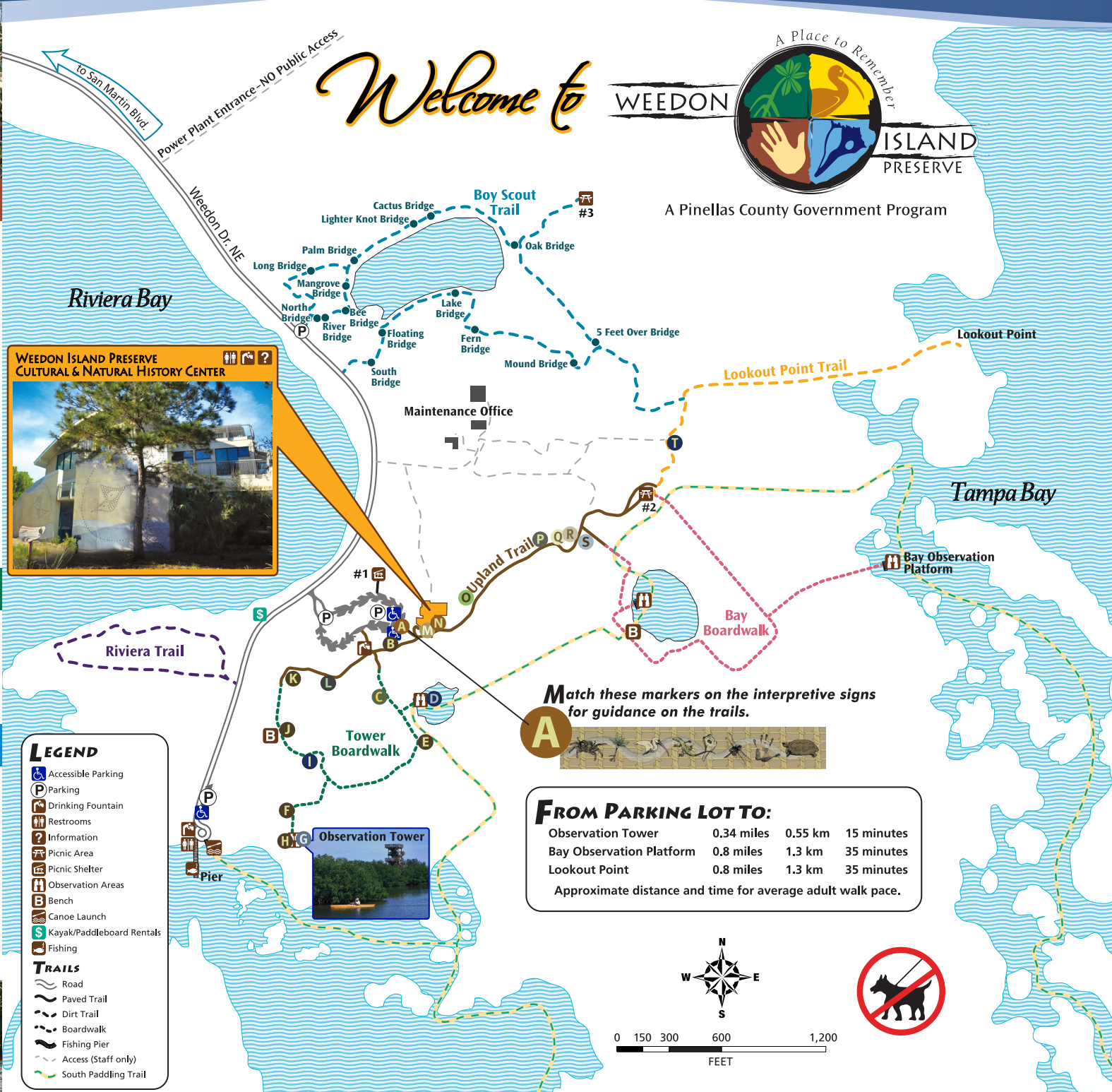
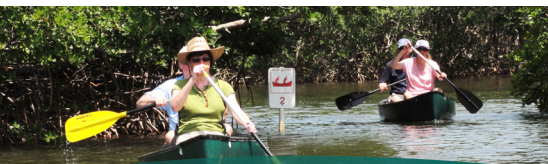
- **Smoking** on trails
- **Pets**
- **Alcohol**
- **Weapons** as defined in PCC Chapter 90 - 60
- **Fireworks** and unauthorized **campfires**
- Unauthorized **motor vehicles**
- **Overnight parking**
- **Bicycles** on trails and boardwalks
- **Fishing** on the bayside and tower boardwalks
- **Drones**

Hiking Trails

- 2 miles of boardwalk and paved trails
- 2.7 miles of natural trail loops
- 45-foot observation tower
- 3 observation platforms
- Picnic facilities

Pier and Paddling Trail

- 200-foot fishing pier with restroom facilities
- State and federal fishing regulations apply
- 4-mile loop, self-guided paddling trail
- Canoe/kayak launch site
- Wash station for canoes/kayaks
- All water activity must end 30 minutes prior to posted closing time.
- On-site kayak/canoe/paddleboard rentals available through ECOMersion Kayak, (727) 229-7829. \$



Center Activities and Amenities

- Environmental education programs for all ages
- Guided hikes, including specialty hikes
- Exhibit gallery
- Gift shop
- Refreshment vending machine

Be Prepared to Explore

Lock your vehicle. Preserve is not responsible for your property.

Strongly recommended for the outdoors:

- Sturdy walking shoes
- Drinking water
- Sun hat/glasses
- Sunscreen
- Bug repellent
- Trail map and compass

Suggested Items:

- Cell phone (water protected if paddling)
- Camera (water protected if paddling)
- Binoculars
- Identification guides

Get Involved

Volunteer opportunities:

- Exhibit Hall Docents
- Hike Guides
- Land Management Assistants

Friends of Weedon Island, Inc.

Visit Friendsofweedonisland.org for more information

