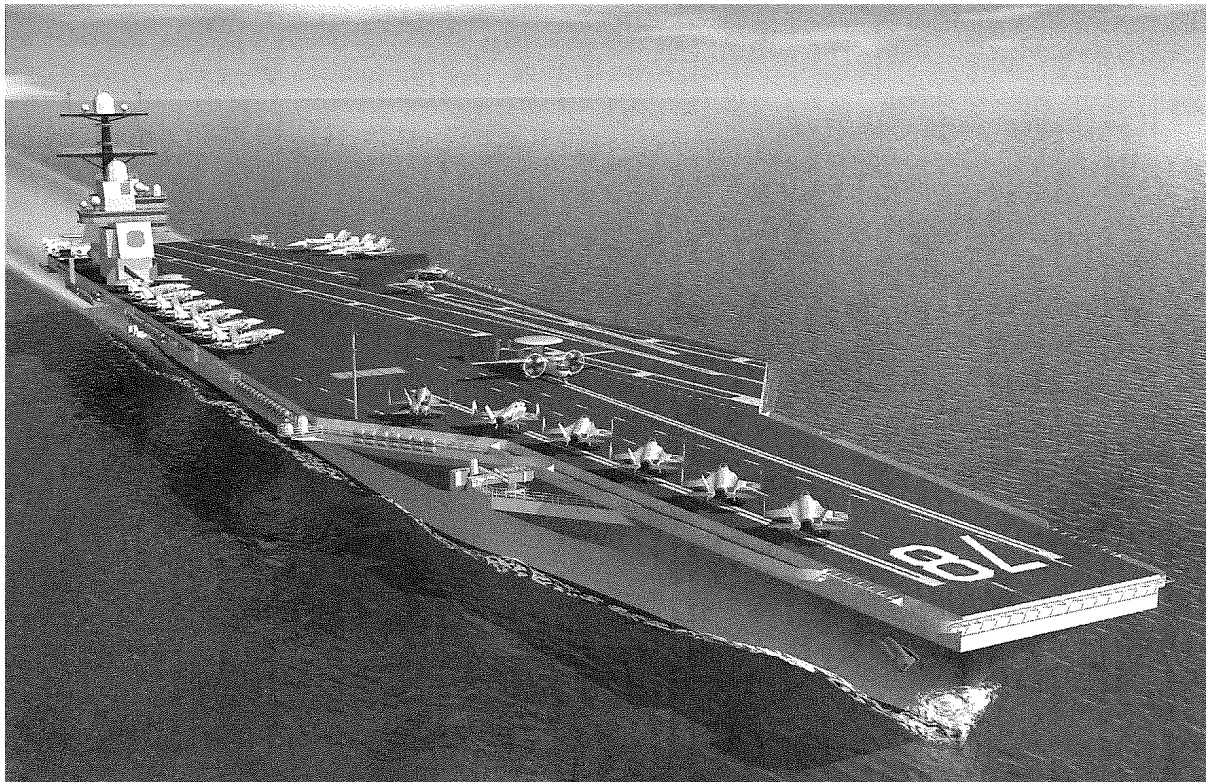


Note: Hydrostatic and Stability curves provided apply to both carrier classes

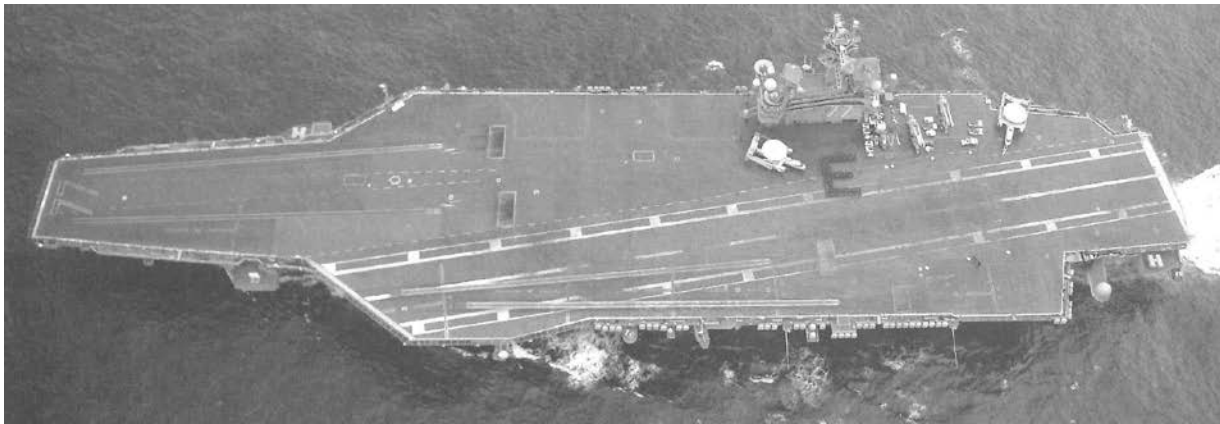
## CVN-78: FORD CLASS

Displacement:	100,000+ tons full load	Elevators:	3 deck edge
Length:	1,040 feet (317.2 m) waterline 1,092 feet (332.9 m) overall	Missiles:	Evolved Sea Sparrow Missile (ESSM) 2 21-cell RAM missile launchers Mark 49
Beam:	134 feet (40.85 m)	Guns:	none
Flight deck:	256 feet (78.05 m)	Radars:	Dual-Band Radar (air/surface search) SPY-3 multi-function 3-D air search navigation
Draft:	39 feet (11.89 m)	Fire Control:	
Propulsion:	4 steam turbines; 4 shafts	EW systems:	SLQ-25A Nixie torpedo countermeasures SLQ-32(V)4
Reactors:	2 A1B pressurized-water reactors (Bechtel)		
Speed:	approx. 30 knots		
Personnel:	approx. 2,800 ship + 1,865 air wing		
Aircraft:	approx. 65		
Catapults:	4 Electro-Magnetic Aircraft Launching System (EMALS)		

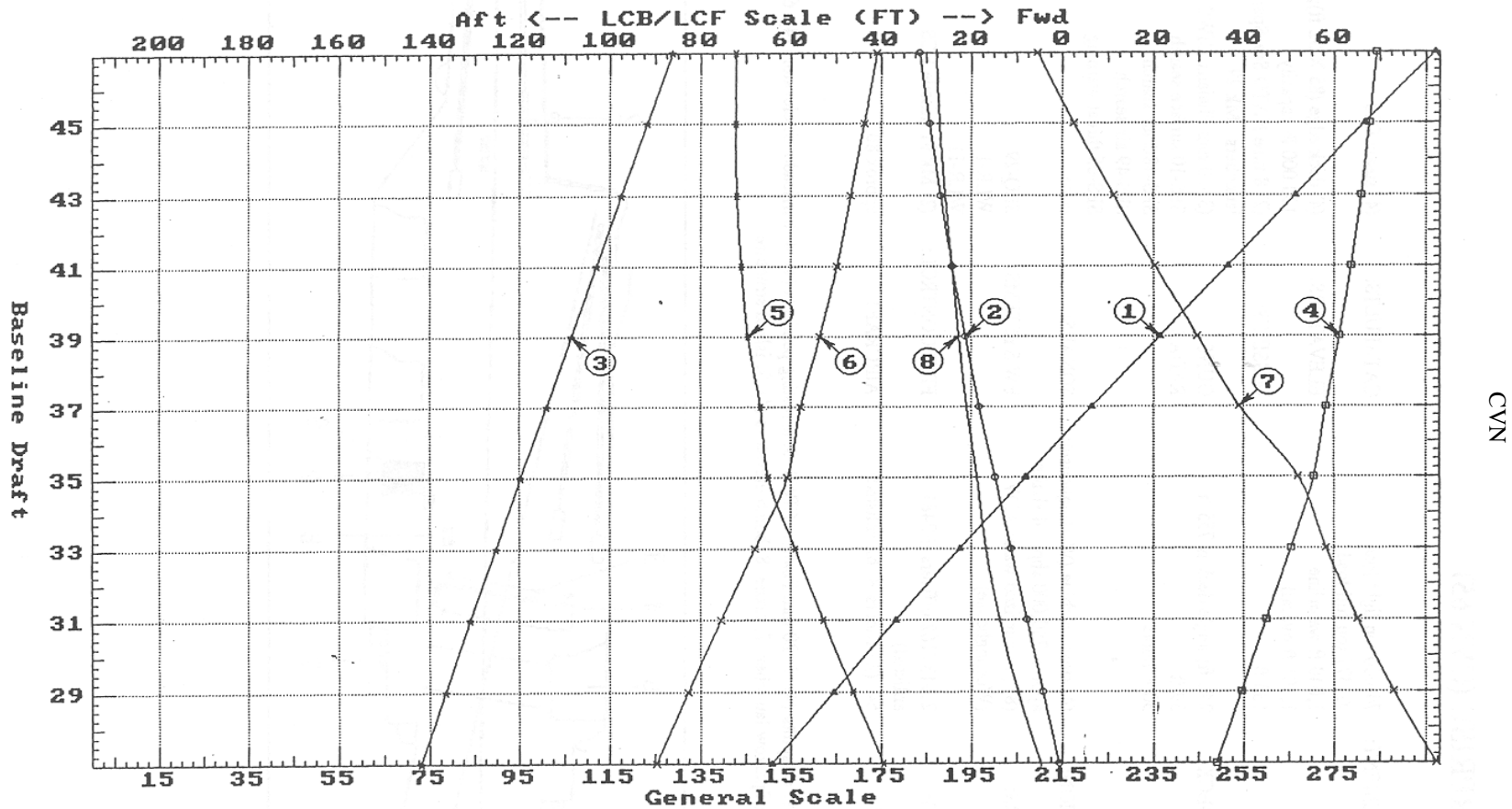


## CVN-68: NIMITZ CLASS

Displacement:	<u>Light</u>	<u>Full load</u>	Air wing:	approx. 1,865	
	CVN 68	77,264 tons	100,020 tons	Aircraft:	approx. 65
	CVN 69	78,837 tons	101,635 tons	Catapults:	4 steam Mark 13-1 in CVN 68-71
	CVN 70	78,434 tons	101,264 tons		4 steam Mark 13-2 in CVN 72 and later ships
	CVN 71	80,777 tons	104,581 tons	Elevators:	4 deck edge (85 x 52 feet/25.9 x 15.85 m); 130,000-lb (58,500-kg) capacity
	CVN 72	81,451 tons	104,263 tons	Missiles:	2 8-cell NATO Sea Sparrow launchers Mark 29 2 21-cell RAM missile launchers Mark 49
	CVN 73	81,364 tons	104,178 tons	Guns:	2 20-mm Phalanx CIWS Mark 15 (multi-barrel) in most ships
	CVN 74	80,506 tons	103,314 tons	Radars:	SPQ-9B track-while-scan in CVN 68-70, 73, 74, 76, 77 (ships with RAM missile)
	CVN 75	81,069 tons	103,877 tons		SPS-48E 3-D air search
	CVN 76	78,621 tons	101,429 tons		SPS-49(V)5 air search in CVN 71, 72, 75
	CVN 77	80,000 tons	102,000 tons		SPS-49a(V)1 air search in CVN 68-70, 73, 74, 76, 77
Length:	1,040 feet (317.2 m) waterline				SPS-64(V)9 navigation in CVN 71, 72, 75
	CVN 68	1,115 feet (339.94 m) overall			SPS-67(V)1 surface search
	CVN 69, 70	1,098 feet (334.76 m) overall			SPS-73(V)12 navigation in CVN 68, 70, 73, 74
	CVN 71-76	1,092 feet (332.93 m) overall			SPS-73(V)17 navigation in CVN 69, 76, 77
	CVN 77	1,100 feet (335.37 m) overall			Mark 23 Target Acquisition System (TAS) in CVN 71, 72, 75 navigation (commercial)
Beam:	134 feet (40.85 m)			Sonars:	none
Flight deck:	252 feet (76.83 m)			Fire control:	3 Mark 91 missile FCS
Draft:	CVN 68-70 37 feet (11.3 m)			EW systems:	SLQ-25A Nixie torpedo countermeasures SLQ-32(V)4
	CVN 71-77 38 feet 5 inches (11.7 m)				
Propulsion:	4 steam turbines (General Electric); 280,000 shp; 4 shafts				
Reactors:	2 pressurized-water A4W (Westinghouse)				
Speed:	30+ knots				
Personnel:	approx. 32,000 (160 officers+3,040 enlisted)				
Flag:	approx. 150 when embarked				



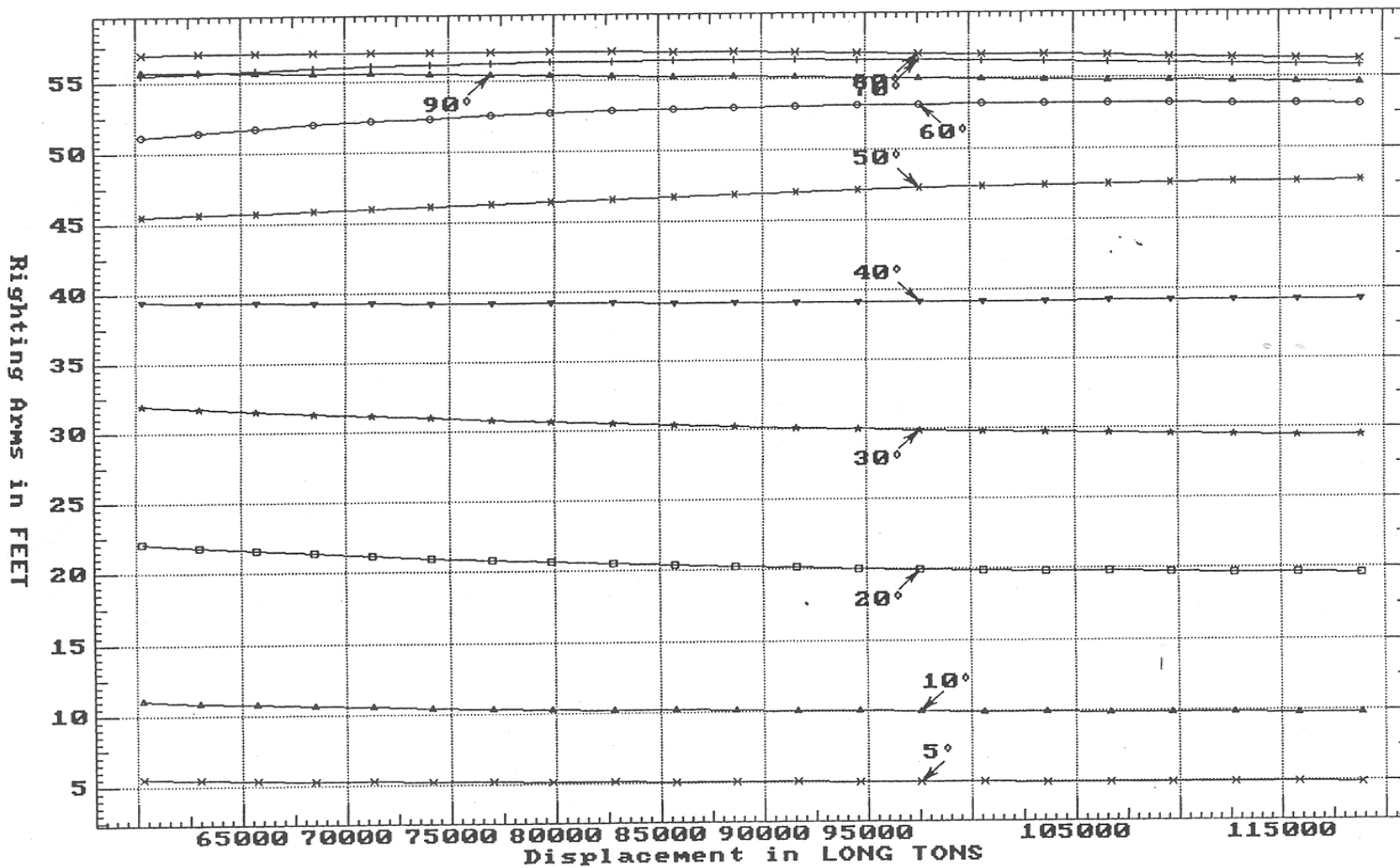
**HYDROSTATIC PROPERTIES at LEVEL TRIM**



- ① Displacement 1=400 LT
- ② LCB (use top scale)
- ③ UCB (KB) 1=0.2 FT
- ④ Immersion 1=0.9 LT/IN
- ⑤ LCF (use top scale)
- ⑥ Mom/Trim 1=91.81 FT-LT/IN
- ⑦ KML 1=8 FT
- ⑧ KMT 1=0.3 FT

Specific Gravity = 1.025      Assumed KG = 0.00 FT  
 "K" = base\_Plane

**CROSS CURVES OF STABILITY - Stbd Heel  
at LEVEL TRIM (initial)**



CVN

Specific Gravity = 1.025    Assumed KG = 0.00 FT  
"K" = Base\_Plane