



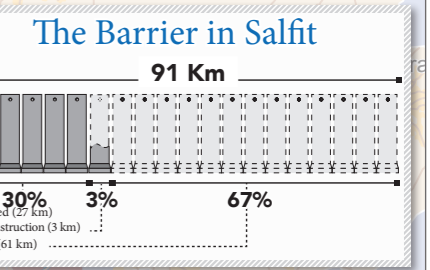
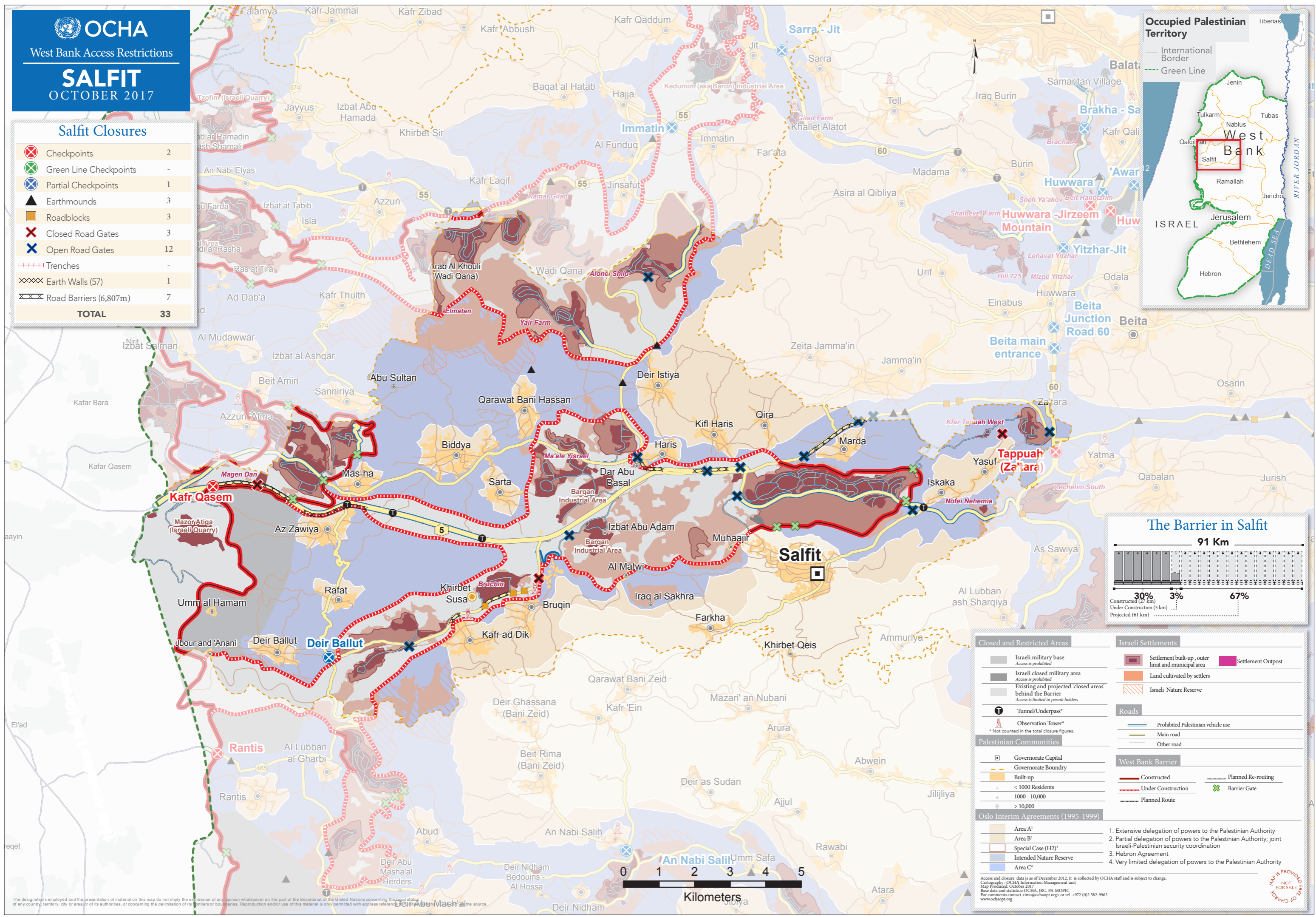
West Bank Access Restrictions

# SALFIT

OCTOBER 2017

## Salfit Closures

⊗	Checkpoints	2
⊗	Green Line Checkpoints	-
⊗	Partial Checkpoints	1
▲	Earthmounds	3
■	Roadblocks	3
⊗	Closed Road Gates	3
⊗	Open Road Gates	12
----	Trenches	-
XXXX	Earth Walls (57)	1
XXXX	Road Barriers (6,807m)	7
<b>TOTAL</b>		<b>33</b>



#### Closed and Restricted Areas

- Israeli military base (Access is prohibited)
- Israeli closed military area (Access is prohibited)
- Existing and projected 'closed areas' behind the Barrier (Access is limited to permit holders)
- Tunnel/Underpass\*
- Observation Tower\*
- \* Not counted in the total closure figures.

#### Israeli Settlements

- Settlement built-up, outer limit and municipal area
- Land cultivated by settlers
- Israeli Nature Reserve

#### Roads

- Prohibited Palestinian vehicle use
- Main road
- Other road

#### West Bank Barrier

- Constructed
- Under Construction
- Planned Re-routing
- Barrier Gate
- Planned Route

#### Palestinian Communities

- Governorate Capital
- Governorate Boundary
- Built-up
- < 1000 Residents
- 1000 - 10,000
- > 10,000

#### Oslo Interim Agreements (1995-1999)

- Area A<sup>1</sup>
- Area B<sup>2</sup>
- Special Case (H2)<sup>3</sup>
- Intended Nature Reserve
- Area C<sup>4</sup>

- Extensive delegation of powers to the Palestinian Authority
- Partial delegation of powers to the Palestinian Authority; joint Israeli-Palestinian security coordination
- Hebron Agreement
- Very limited delegation of powers to the Palestinian Authority

Access and closure data is as of December 2012. It is collected by OCHA staff and is subject to change.  
 Cartography: OCHA Information Management Unit  
 Map Produced: October 2017  
 Base data and statistics: OCHA, JRC, PA-MOPIC  
 For comments contact: sima@ochaopt.org or tel. +972 (0)2 582-9962  
 www.ochaopt.org

The designations employed and the presentation of material on this map do not imply the expression of any opinion whatsoever on the part of the Secretariat of the United Nations concerning the legal status of any country, territory, city or area or of its authorities, or concerning the delimitation of its frontiers or boundaries. Reproduction and/or use of this material is only permitted with express reference to the source.

