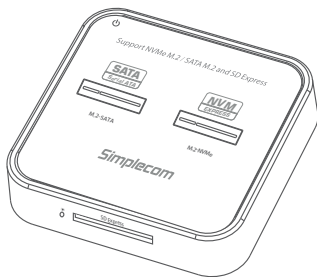




SD530 NVMe + SATA M.2 SSD Docking Station with SD Express Card Reader

User Manual

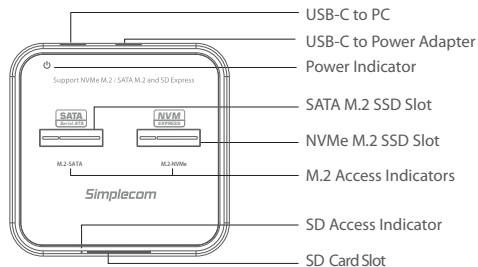


WWW.SIMPLECOM.COM.AU

About Product

SD530 is an all-in-one USB 3.2 Gen2 docking station that supports both NVMe and SATA based M.2 SSD, it also has latest SD 7.1 card reader with SD Express support. USB 3.2 Gen2 interface support up to 10Gbps data transfer rate and can be easily attached to computer USB port.

SD530 is designed for fast access to NVMe M.2, SATA M.2 SSD and SD Card. With multi-LUN (logical unit number) support, it will show three separate drive letters for NVMe M.2, SATA M.2 and SD 7.1 slot, so you can access data from NVMe M.2, SATA M.2 and SD slot simultaneously, you can also copy files from one drive to another easily. SD Express slot is compliant with SD 7.1 specification, and it's also backwards compatible with previous SD versions.



Features

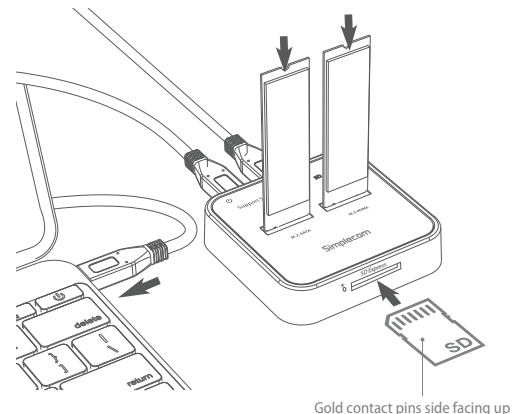
- Dual M.2 SSD bay, one NVMe M.2 slot and one SATA M.2 slot
- One SD Card slot, support SDHC, SDXC, SDUC cards and SD Express
- Compliant with SD 7.1 specification, backwards compatible with previous SD versions
- USB 3.2 Gen2 interface support up to 10Gbps data transfer rate
- Support multi-LUN (logical unit number), each slot has a separate drive letter
- Access data from NVMe M.2, SATA M.2 and SD slot simultaneously
- Auto sleep function, automatically sleep after 10 minutes of inactivity
- Plug and play, no drivers required
- LED light indicates Power and Activity status

Specifications

- Model: SD530
- Interface: USB-C (USB 3.2 Gen 2)
- Transfer Rate: up to 10Gbps
- SSD Support: SATA M.2, NVMe M.2
- SSD Size Support: 2242 / 2260 / 2280 / 22110
- SD Card Support: SD 7.1 SD Express, SD 3.01 UHS-I, SDHC, SDXC, SDUC
- Multi-LUN Support: Yes
- Net Weight: 150g
- Dimensions: 79 x 77 x 19mm
- Operating System: Windows 7 and above, Mac OS 10.8 and above

Installation

1. Connect the power adapter to the dock with one USB-C to USB-A cable
2. Plug USB-A end to power adapter and USB-C end to the "DC IN" port on the dock
3. Connect another USB-C cable to "PC" port on the dock and another end to PC
4. Initialize and create partition if it's a new SSD
5. When inserting SD card, the gold contact pins side facing up



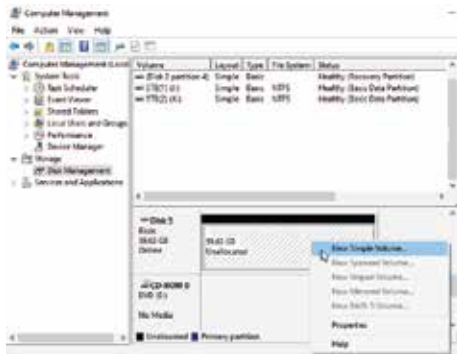
Important Note

- Please plug the NVMe M.2 SSD or SATA M.2 SSD to corresponding slot, it won't be recognized if you plug to the wrong slot
- Please do not plug or unplug SSD or SD card when another slot is accessing by PC, it will interrupt data transfer and may corrupt the data
- Do not touch the SSD during operation. Be careful of hot surface of M.2 SSD, M.2 drives temperature can reach up to 70°C during operation
- The docking station will automatically go to sleep after 10 minutes of inactivity
- Offline clone is not supported, however it supports multi-LUN and you can use software clone (clone software is not included)
- For 10Gbps data transfer rate, the USB 3.2 Gen2 or Thunderbolt 3 interface is required, USB 3.2 Gen2 is formerly known as USB 3.1 Gen2
- For new M.2 SSD drive, it has to be initialized and partitioned before use

* M.2 SSD and SD card shown on image is for illustration purposes only and not included in the box

Partition and Formatting

If your SSD has been partitioned, please connect directly with dock to use. It will be showed new drive letter(s) in computer. If not, in the premise of system can correctly identify SSD, you can use the partition and formatting program of Windows to do it, or third-party software. Windows Disk management, which located at "Windows Administrative Tools", Disk Management located on the left-hand side of the "Computer Management" window, under the Storage heading.



After operation finished, open My Computer, it will appear the 'New Disk' except the local disk, indicated that it connects computer successfully.

Safely Disconnect

Windows: Look for the Safely Remove Hardware icon on the taskbar (right side system tray area). If you don't see it, select Show hidden icons . Click the icon and select the hardware you want to eject.

Mac: In Mac OS the drive appears as an icon on the desktop. Before unplugging the drive, it needs to be dismounted by dragging the drive to the Trash Can, once the activity light has gone out, you can safely remove the drive.

Warranty

1 Year limited Warranty. Our goods come with guarantees that cannot be excluded under the Australian Consumer Law. You are entitled to a replacement or refund for a major failure and for compensation for any other reasonably foreseeable loss or damage. You are also entitled to have the goods repaired or replaced if the goods fail to be of acceptable quality and the failure does not amount to a major failure.

For our assistance with regards to warranty please email to support@simplecom.com.au or create a support ticket at <http://www.simplecom.com.au>

Simplify Your Life

www.simplecom.com.au

© Simplecom Australia All Rights Reserved. Simplecom is a registered trademark of Simplecom Australia Pty Ltd. All other trademarks are property of their respective owner. Specifications and external appearance are subject to change without notice. Warranty and technical support covering this product are only valid in the country or region of purchase.