

## HIGHLIGHTS OF PRESCRIBING INFORMATION

These highlights do not include all the information needed to use UBRELVY safely and effectively. See full prescribing information for UBRELVY.

**UBRELVY® (ubrogepant) tablets, for oral use**  
**Initial U.S. Approval: 2019**

### RECENT MAJOR CHANGES

Contraindications (4)	2/2023
Warnings and Precautions, Hypersensitivity Reactions (5.1)	2/2023

### INDICATIONS AND USAGE

UBRELVY is a calcitonin gene-related peptide receptor antagonist indicated for the acute treatment of migraine with or without aura in adults. (1)

#### Limitations of Use

UBRELVY is not indicated for the preventive treatment of migraine. (1)

### DOSAGE AND ADMINISTRATION

- The recommended dose is 50 mg or 100 mg taken orally, as needed. (2.1)
- If needed, a second dose may be administered at least 2 hours after the initial dose. (2.1)
- The maximum dose in a 24-hour period is 200 mg. (2.1)
- Severe Hepatic or Severe Renal Impairment: Recommended dose is 50 mg; if needed, a second 50 mg dose may be taken at least 2 hours after the initial dose. (2.2, 8.6, 8.7)

### DOSAGE FORMS AND STRENGTHS

Tablets: 50 mg and 100 mg (3)

### CONTRAINDICATIONS

- Concomitant use with strong CYP3A4 inhibitors. (4)

- History of serious hypersensitivity to ubrogepant or any component of UBRELVY. (4)

### WARNINGS AND PRECAUTIONS

Hypersensitivity Reactions: If a serious hypersensitivity reaction occurs, discontinue UBRELVY and initiate appropriate therapy. Severe hypersensitivity reactions have included anaphylaxis and dyspnea. These reactions can occur within minutes, hours, or days after administration. (5.1)

### ADVERSE REACTIONS

The most common adverse reactions (at least 2% and greater than placebo) were nausea and somnolence. (6.1)

**To report SUSPECTED ADVERSE REACTIONS, contact AbbVie at 1-800-678-1605 or FDA at 1-800-FDA-1088 or [www.fda.gov/medwatch](http://www.fda.gov/medwatch).**

### DRUG INTERACTIONS

- Strong CYP3A4 Inducers: Should be avoided as concomitant use will result in reduction of ubrogepant exposure. (2.2, 7.2)
- For additional dose modifications for moderate or weak CYP3A4 inhibitors and inducers or BCRP and/or P-gp only inhibitors, refer to section 2.2. (7.1, 7.2, 7.3)

### USE IN SPECIFIC POPULATIONS

- Pregnancy: Based on animal data, may cause fetal harm. (8.1)
- Avoid use in patients with end-stage renal disease. (8.7)

See 17 for PATIENT COUNSELING INFORMATION and FDA-approved patient labeling.

Revised: 6/2023

## FULL PRESCRIBING INFORMATION: CONTENTS\*

### 1 INDICATIONS AND USAGE

### 2 DOSAGE AND ADMINISTRATION

#### 2.1 Recommended Dosage

#### 2.2 Dosage Modifications

### 3 DOSAGE FORMS AND STRENGTHS

### 4 CONTRAINDICATIONS

### 5 WARNINGS AND PRECAUTIONS

#### 5.1 Hypersensitivity Reactions

### 6 ADVERSE REACTIONS

#### 6.1 Clinical Trials Experience

#### 6.2 Postmarketing Experience

### 7 DRUG INTERACTIONS

#### 7.1 CYP3A4 Inhibitors

#### 7.2 CYP3A4 Inducers

#### 7.3 BCRP and/or P-gp Only Inhibitors

### 8 USE IN SPECIFIC POPULATIONS

#### 8.1 Pregnancy

#### 8.2 Lactation

#### 8.4 Pediatric Use

#### 8.5 Geriatric Use

#### 8.6 Hepatic Impairment

#### 8.7 Renal Impairment

### 10 OVERDOSAGE

### 11 DESCRIPTION

### 12 CLINICAL PHARMACOLOGY

#### 12.1 Mechanism of Action

#### 12.2 Pharmacodynamics

#### 12.3 Pharmacokinetics

### 13 NONCLINICAL TOXICOLOGY

#### 13.1 Carcinogenesis, Mutagenesis, Impairment of Fertility

### 14 CLINICAL STUDIES

### 16 HOW SUPPLIED/STORAGE AND HANDLING

#### 16.1 How Supplied

#### 16.2 Storage and Handling

### 17 PATIENT COUNSELING INFORMATION

\* Sections or subsections omitted from the full prescribing information are not listed.

# FULL PRESCRIBING INFORMATION

## 1 INDICATIONS AND USAGE

UBRELVY is indicated for the acute treatment of migraine with or without aura in adults.

### Limitations of Use

UBRELVY is not indicated for the preventive treatment of migraine.

## 2 DOSAGE AND ADMINISTRATION

### 2.1 Recommended Dosage

The recommended dose of UBRELVY is 50 mg or 100 mg taken orally with or without food.

If needed, a second dose may be taken at least 2 hours after the initial dose. The maximum dose in a 24-hour period is 200 mg. The safety of treating more than 8 migraines in a 30-day period has not been established.

### 2.2 Dosage Modifications

Dosing modifications for concomitant use of specific drugs and for patients with hepatic or renal impairment are provided in Table 1.

**Table 1: Dose Modifications for Drug Interactions and for Specific Populations**

Dosage Modifications	Initial Dose	Second Dose <sup>a</sup> (if needed)
<b>Concomitant Drug</b> [see <i>Drug Interactions (7)</i> ]		
Moderate CYP3A4 Inhibitors (7.1)	50 mg	Avoid within 24 hours
Weak CYP3A4 Inhibitors (7.1)	50 mg	50 mg
Strong CYP3A4 Inducers (7.2)	Avoid concomitant use	
Weak & Moderate CYP3A4 Inducers (7.2)	100 mg	100 mg
BCRP and/or P-gp only Inhibitors (7.3)	50 mg	50 mg
<b>Specific Populations</b> [see <i>Use in Specific Populations (8)</i> ]		
Severe Hepatic Impairment (Child-Pugh Class C) (8.6)	50 mg	50 mg
Severe Renal Impairment (CLcr 15-29 mL/min) (8.7)	50 mg	50 mg
End-Stage Renal Disease (CLcr <15 mL/min) (8.7)	Avoid use	

<sup>a</sup> Second dose may be taken at least 2 hours after the initial dose

## 3 DOSAGE FORMS AND STRENGTHS

UBRELVY 50 mg is supplied as white to off-white, capsule-shaped, biconvex tablets debossed with “U50” on one side.

UBRELVY 100 mg is supplied as white to off-white, capsule-shaped, biconvex tablets debossed with “U100” on one side.

## 4 CONTRAINDICATIONS

UBRELVY is contraindicated:

- With concomitant use of strong CYP3A4 inhibitors [see *Drug Interactions (7.1)*]
- In patients with a history of serious hypersensitivity to ubrogepant or any component of UBRELVY. Reactions have included anaphylaxis, dyspnea, and facial or throat edema [see *Warnings and Precautions (5.1)*]

## 5 WARNINGS AND PRECAUTIONS

### 5.1 Hypersensitivity Reactions

Hypersensitivity reactions, including anaphylaxis, dyspnea, facial or throat edema, rash, urticaria, and pruritus, have been reported with use of UBRELVY. Hypersensitivity reactions can occur minutes, hours, or days after administration. Most reactions occurred within hours after dosing and were not serious, and some reactions led to discontinuation. If a serious or severe hypersensitivity reaction occurs, discontinue UBRELVY and institute appropriate therapy [see *Contraindications (4)* and *Adverse Reactions (6.2)*].

## 6 ADVERSE REACTIONS

The following clinically significant adverse reactions are described elsewhere in labeling:

- Hypersensitivity Reactions [see *Warnings and Precautions (5.1)*]

### 6.1 Clinical Trials Experience

Because clinical trials are conducted under widely varying conditions, adverse reaction rates observed in the clinical trials of a drug cannot be directly compared to rates in the clinical trials of another drug and may not reflect the rates observed in practice.

The safety of UBRELVY was evaluated in 3,624 subjects who received at least one dose of UBRELVY. In two randomized, double-blind, placebo-controlled, Phase 3 trials in adult patients with migraine (Studies 1 and 2), a total of 1,439 patients received UBRELVY 50 mg or 100 mg [see *Clinical Studies (14)*]. Of the UBRELVY-treated patients in these 2 studies, approximately 89% were female, 82% were White, 15% were Black, and 17% were of Hispanic or Latino ethnicity. The mean age at study entry was 41 years (range of 18-75 years).

Long-term safety was assessed in 813 patients, dosing intermittently for up to 1 year in an open-label extension study. Patients were permitted to treat up to 8 migraines per month with UBRELVY. Of these 813 patients, 421 patients were exposed to 50 mg or 100 mg for at least 6 months, and 364 patients were exposed to these doses for at least one year, all of whom treated at least two migraine attacks per month, on average. In that study, 2.5% of patients were withdrawn

from UBRELVY because of an adverse reaction. The most common adverse reaction resulting in discontinuation in the long-term safety study was nausea.

Adverse reactions in Studies 1 and 2 are shown in Table 2.

**Table 2: Adverse Reactions Occurring in At Least 2% and at a Frequency Greater than Placebo in Studies 1 and 2**

	<b>Placebo</b> (N= 984) %	<b>UBRELVY</b> <b>50 mg</b> (N=954) %	<b>UBRELVY</b> <b>100 mg</b> (N=485) %
Nausea	2	2	4
Somnolence*	1	2	3
Dry Mouth	1	<1	2

\*Somnolence includes the adverse reaction-related terms sedation and fatigue.

## 6.2 Postmarketing Experience

The following adverse reactions have been identified during post-approval use of UBRELVY. Because these reactions are reported voluntarily from a population of uncertain size, it is not always possible to reliably estimate their frequency or establish a causal relationship to drug exposure.

*Immune System Disorders:* Hypersensitivity (e.g., anaphylaxis, dyspnea, facial or throat edema, rash, urticaria, and pruritus) [see *Contraindications (4)* and *Warnings and Precautions (5.1)*]

## 7 DRUG INTERACTIONS

### 7.1 CYP3A4 Inhibitors

Co-administration of UBRELVY with ketoconazole, a strong CYP3A4 inhibitor, resulted in a significant increase in exposure of ubrogepant [see *Clinical Pharmacology (12.3)*]. UBRELVY should not be used with strong CYP3A4 inhibitors (e.g., ketoconazole, itraconazole, clarithromycin) [see *Contraindications (4)*].

Co-administration of UBRELVY with verapamil, a moderate CYP3A4 inhibitor, resulted in an increase in ubrogepant exposure [see *Clinical Pharmacology (12.3)*]. Dose adjustment is recommended with concomitant use of UBRELVY and moderate CYP3A4 inhibitors (e.g., cyclosporine, ciprofloxacin, fluconazole, fluvoxamine, grapefruit juice) [see *Dosage and Administration (2.2)*].

No dedicated drug interaction study was conducted with ubrogepant and weak CYP3A4 inhibitors. Dose adjustment is recommended with concomitant use of UBRELVY with weak CYP3A4 inhibitors [see *Dosage and Administration (2.2)*].

### 7.2 CYP3A4 Inducers

Co-administration of UBRELVY with rifampin, a strong CYP3A4 inducer, resulted in a significant reduction in ubrogepant exposure [see *Clinical Pharmacology (12.3)*]. In patients taking strong CYP3A4 inducers (e.g., phenytoin, barbiturates, rifampin, St. John's Wort), loss of ubrogepant efficacy is expected, and concomitant use should be avoided.

Co-administration of UBRELVY with moderate or weak CYP3A4 inducers was not evaluated in a clinical study. Dose adjustment is recommended with concomitant use of UBRELVY and moderate or weak CYP3A4 inducers [see *Dosage and Administration (2.2)*].

### **7.3 BCRP and/or P-gp Only Inhibitors**

Ubrogepant is a substrate of BCRP and P-gp efflux transporters. Use of BCRP and/or P-gp only inhibitors (e.g., quinidine, carvedilol, eltrombopag, curcumin) may increase the exposure of ubrogepant [see *Clinical Pharmacology (12.3)*]. Clinical drug interaction studies with inhibitors of these transporters were not conducted. Dose adjustment is recommended with BCRP and/or P-gp only inhibitors [see *Dosage and Administration (2.2)*].

## **8 USE IN SPECIFIC POPULATIONS**

### **8.1 Pregnancy**

#### Pregnancy Exposure Registry

There is a pregnancy exposure registry that monitors outcomes in women who become pregnant while taking UBRELVY. Patients should be encouraged to enroll by calling 1-833-277-0206 or visiting <http://empresspregnancyregistry.com>.

#### Risk Summary

There are no adequate data on the developmental risk associated with the use of UBRELVY in pregnant women. In animal studies, adverse effects on embryofetal development were observed following administration of ubrogepant during pregnancy (increased embryofetal mortality in rabbits) or during pregnancy and lactation (decreased body weight in offspring in rats) at doses greater than those used clinically and which were associated with maternal toxicity (see *Data*).

In the U.S. general population, the estimated background risk of major birth defects and miscarriages in clinically recognized pregnancies is 2-4% and 15-20%, respectively. The estimated rate of major birth defects (2.2% -2.9%) and miscarriage (17%) among deliveries to women with migraine are similar to rates reported in women without migraine.

#### Clinical Considerations

##### *Disease-Associated Maternal and/or Embryo/Fetal Risk*

Published data have suggested that women with migraine may be at increased risk of preeclampsia and gestational hypertension during pregnancy.

#### Data

##### *Animal Data*

Oral administration of ubrogepant (0, 1.5, 5, 25, 125 mg/kg/day) to pregnant rats during the period of organogenesis resulted in no adverse effects on embryofetal development. Plasma exposure (AUC) at the highest dose tested is approximately 45 times that in humans at the maximum recommended human dose (MRHD) of 200 mg/day.

In pregnant rabbits, ubrogepant (0, 15, 45, 75, or 250 mg/kg/day) was administered orally throughout organogenesis in two separate studies. In both studies, the highest dose tested (250 mg/kg/day) was associated with maternal toxicity. In the first study, ubrogepant produced abortion and increased embryofetal mortality in surviving litters at the high dose (250 mg/kg/day). In the second study, excessive maternal toxicity at the high dose (250 mg/kg/day) resulted in early termination and lack of fetal data for that dose group. Plasma exposure (AUC) at the highest no-effect dose (75 mg/kg/day) for adverse effects on embryofetal development in rabbit is approximately 8 times that in humans at the MRHD.

Oral administration of ubrogepant (0, 25, 60, or 160 mg/kg/day) to rats throughout gestation and lactation resulted in decreased body weight in offspring at birth and during the lactation period at the mid and high doses, which were associated with maternal toxicity. Plasma exposure (AUC) at the no-effect dose for adverse effects on pre- and postnatal development in rats (25 mg/kg/day) is approximately 15 times that in humans at the MRHD.

## **8.2 Lactation**

There are no data on the presence of ubrogepant in human milk, the effects of ubrogepant on the breastfed infant, or the effects of ubrogepant on milk production. In lactating rats, oral dosing with ubrogepant resulted in levels of ubrogepant in milk comparable to peak plasma concentrations. The developmental and health benefits of breastfeeding should be considered along with the mother's clinical need for UBRELVY and any potential adverse effects on the breastfed infant from UBRELVY or from the underlying maternal condition.

## **8.4 Pediatric Use**

Safety and effectiveness in pediatric patients have not been established.

## **8.5 Geriatric Use**

In pharmacokinetic studies, no clinically significant pharmacokinetic differences were observed between elderly and younger subjects. Clinical studies of UBRELVY did not include sufficient numbers of patients aged 65 years and over to determine whether they respond differently from younger patients. In general, dose selection for an elderly patient should be cautious, usually starting at the low end of the dosing range.

## **8.6 Hepatic Impairment**

In patients with pre-existing mild (Child-Pugh Class A), moderate (Child-Pugh Class B), or severe hepatic impairment (Child-Pugh Class C), ubrogepant exposure was increased by 7%, 50%, and 115%, respectively. No dose adjustment is recommended for patients with mild or moderate hepatic impairment. Dose adjustment for UBRELVY is recommended for patients with severe hepatic impairment [*see Dosage and Administration (2.2)*].

## **8.7 Renal Impairment**

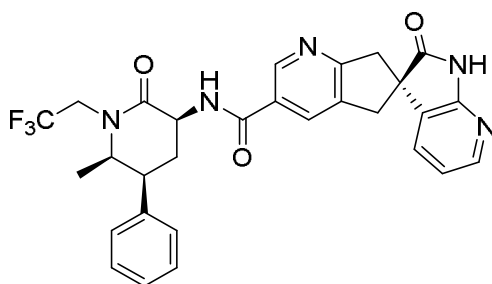
The renal route of elimination plays a minor role in the clearance of ubrogepant [see *Clinical Pharmacology (12.3)*]. No dose adjustment is recommended for patients with mild or moderate renal impairment. Dose adjustment is recommended for patients with severe renal impairment (CLcr 15-29 mL/min) [see *Dosage and Administration (2.2)* and *Clinical Pharmacology (12.3)*]. Avoid use of UBRELVY in patients with end-stage renal disease (ESRD) (CLcr <15 mL/min).

## 10 OVERDOSAGE

The elimination half-life of ubrogepant is approximately 5 to 7 hours; therefore, monitoring of patients after overdose with UBRELVY should continue for at least 24 hours, or while symptoms or signs persist.

## 11 DESCRIPTION

The active ingredient of UBRELVY is ubrogepant, a calcitonin gene-related peptide (CGRP) receptor antagonist. The chemical name of ubrogepant is (3'S)-N-((3S,5S,6R)-6-methyl-2-oxo-5-phenyl-1-(2,2,2-trifluoroethyl)piperidin-3-yl)-2'-oxo-1',2',5,7-tetrahydrospiro[cyclopenta[*b*]pyridine-6,3'-pyrrolo[2,3-*b*]pyridine]-3-carboxamide and has the following structural formula:



The molecular formula is C<sub>29</sub>H<sub>26</sub>F<sub>3</sub>N<sub>5</sub>O<sub>3</sub> and molecular weight is 549.6. Ubrogapant is a white to off-white powder. It is freely soluble in ethanol, methanol, acetone, and acetonitrile; and is practically insoluble in water.

UBRELVY is available as tablets for oral administration containing 50 mg or 100 mg ubrogepant. The inactive ingredients include colloidal silicon dioxide, croscarmellose sodium, mannitol, microcrystalline cellulose, polyvinylpyrrolidone vinyl acetate copolymer, sodium chloride, sodium stearyl fumarate, and vitamin E polyethylene glycol succinate.

## 12 CLINICAL PHARMACOLOGY

### 12.1 Mechanism of Action

Ubrogapant is a calcitonin gene-related peptide receptor antagonist.

### 12.2 Pharmacodynamics

#### Cardiac Electrophysiology

At a dose 2 times the maximum recommended daily dose, UBRELVY does not prolong the QT interval to any clinically relevant extent.

### **12.3 Pharmacokinetics**

#### Absorption

Following oral administration of UBRELVY, ubrogepant is absorbed with peak plasma concentrations at approximately 1.5 hours. Ubrogepant displays dose-proportional pharmacokinetics within the recommended dose range [see *Dosage and Administration (2.1)*].

#### *Effect of Food*

When UBRELVY was administered with a high-fat meal, the time to maximum ubrogepant plasma concentration was delayed by 2 hours and resulted in a 22% reduction in  $C_{max}$  with no change in AUC. UBRELVY was administered without regard to food in clinical efficacy studies [see *Dosage and Administration (2.1)*].

#### Distribution

Plasma protein binding of ubrogepant is 87% in vitro. The mean apparent central volume of distribution of ubrogepant (V/F) after single dose oral administration is approximately 350 L.

#### Elimination

##### *Metabolism*

Ubrogepant is eliminated mainly through metabolism, primarily by CYP3A4. The parent compound (ubrogepant), and 2 glucuronide conjugate metabolites were the most prevalent circulating components in human plasma. The glucuronide metabolites are not expected to contribute to the pharmacological activity of ubrogepant since they were reported as about 6000-fold less potent in the CGRP receptor binding assay.

##### *Excretion*

The elimination half-life of ubrogepant is approximately 5-7 hours. The mean apparent oral clearance (CL/F) of ubrogepant is approximately 87 L/hr. Ubrogepant is excreted mostly via the biliary/fecal route, while the renal route is a minor route of elimination. Following single oral dose administration of [ $^{14}$ C]-ubrogepant to healthy male subjects, 42% and 6% of the dose was recovered as unchanged ubrogepant in feces and urine, respectively.

#### Specific Populations

##### *Patients with Renal Impairment*

Population pharmacokinetic analysis based on pooled data from clinical studies was used to evaluate the effect of renal impairment characterized based on estimated creatinine clearance (CL<sub>cr</sub>) using the Cockcroft-Gault (C-G) equation. Renal impairment did not reveal a significant difference in the pharmacokinetics of ubrogepant in patients with mild or moderate renal impairment (CL<sub>cr</sub> 30-89 mL/min) relative to those with normal renal function (CL<sub>cr</sub> >90 mL/min). Patients with severe renal impairment or ESRD (eGFR <30 mL/min) have not been studied. Dose adjustment in patients with severe renal impairment (CL<sub>cr</sub> 15-29 mL/min) is recommended based on ADME information and a conservative assumption that severe renal



impairment is unlikely to cause more than a two-fold increase in exposure of ubrogepant [*see Dosage and Administration (2.2)*]. No dosing recommendations can be made for patients with ESRD ( $CL_{cr} < 15$  mL/min).

#### *Patients with Hepatic Impairment*

In patients with pre-existing mild (Child-Pugh Class A), moderate (Child-Pugh Class B), or severe hepatic impairment (Child-Pugh Class C), ubrogepant exposure was increased by 7%, 50%, and 115%, respectively. Patients with severe hepatic impairment require dose adjustments [*see Dosage and Administration (2.2)*].

#### *Other Specific Populations*

Based on a population pharmacokinetic analysis, age, sex, race, and body weight did not have a significant effect on the pharmacokinetics ( $C_{max}$  and AUC) of ubrogepant. Therefore, no dose adjustments are warranted based on these factors.

#### Drug Interactions

##### *In Vitro Studies*

##### Enzymes

Ubrogepant is not an inhibitor of CYP1A2, 2B6, or 3A4. Ubrogepant is a weak inhibitor of CYP2C8, 2C9, 2D6, 2C19, MAO-A, and UGT1A1. The in vitro inhibition potential is not expected to be clinically significant. Ubrogepant is not an inducer of CYP1A2, 2B6, or 3A4 at clinically relevant concentrations.

##### Transporters

Ubrogepant is a substrate of BCRP and P-gp transporters in-vitro; therefore, use of inhibitors of BCRP and/or P-gp may increase the exposure of ubrogepant. Dose adjustment for concomitant use of UBRELVY with inhibitors of BCRP and/or P-gp is recommended based on ADME and clinical interaction studies with CYP3A4/P-gp inhibitors that show the highest predicted potential increase in exposure of ubrogepant is not expected to be more than two-fold [*see Dosage and Administration (2.2) and Drug Interactions (7.3)*].

Ubrogepant is a weak substrate of OATP1B1, OATP1B3, and OAT1, but not a substrate of OAT3. It is not an inhibitor of P-gp, BCRP, BSEP, MRP3, MRP4, OAT1, OAT3, or NTCP transporters, but is a weak inhibitor of OATP1B1, OATP1B3, and OCT2 transporters. Dose adjustments are needed only for P-gp, or BCRP inhibitors. No clinical drug interactions are expected for UBRELVY with other transporters.

##### *In Vivo Studies*

CYP3A4 Inhibitors [*see Dosage and Administration (2.2), Contraindications (4), and Drug Interactions (7.1)*]:

Co-administration of UBRELVY with ketoconazole, a strong CYP3A4 inhibitor, resulted in a 9.7-fold and 5.3-fold increase in  $AUC_{inf}$  and  $C_{max}$  of ubrogepant, respectively. Co-administration of UBRELVY with verapamil, a moderate CYP3A4 inhibitor, resulted in about 3.5-fold and 2.8-fold increase in  $AUC_{inf}$  and  $C_{max}$  of ubrogepant, respectively. No dedicated drug interaction study was conducted to assess concomitant use with weak CYP3A4 inhibitors. The conservative

prediction of the maximal potential increase in ubrogepant exposure with weak CYP3A4 inhibitors is not expected to be more than 2-fold.

CYP3A4 Inducers [*see Dosage and Administration (2.2) and Drug Interactions (7.2)*]:

Co-administration of UBRELVY with rifampin, a strong CYP3A4 inducer, resulted in an 80% reduction in ubrogepant exposure. No dedicated drug interaction studies were conducted to assess concomitant use with weak or moderate CYP3A4 inducers. Dose adjustment for concomitant use of UBRELVY with weak or moderate CYP3A4 inducers is recommended based on a conservative prediction of 50% reduction in exposure of ubrogepant.

Other Drug-Drug Interaction Evaluations:

No significant pharmacokinetic interactions were observed for either ubrogepant or co-administered drugs when UBRELVY was administered with oral contraceptives (containing norgestimate and ethinyl estradiol), acetaminophen, naproxen, sumatriptan, esomeprazole, erenumab, galcanezumab, or atogepant.

## 13 NONCLINICAL TOXICOLOGY

### 13.1 Carcinogenesis, Mutagenesis, Impairment of Fertility

#### Carcinogenicity

Two-year oral carcinogenicity studies of ubrogepant were conducted in mice (0, 5, 15, or 50 mg/kg/day) and rats (0, 10, 30, or 100 mg/kg in males; 0, 10, 30, or 150 mg/kg in females). There was no evidence of drug-related tumors in either species. The highest dose tested in mice is similar to the maximum recommended human dose (200 mg/day) on a body surface area (mg/m<sup>2</sup>) basis. Plasma exposure (AUC) at the highest dose tested in rats is approximately 25 times that in humans at the maximum recommended human dose (MRHD) of 200 mg/day.

#### Mutagenicity

Ubrogepant was negative in in vitro (Ames, chromosomal aberration test in Chinese Hamster Ovary cells) and in vivo (rat bone marrow micronucleus) assays.

#### Impairment of Fertility

Oral administration of ubrogepant (0, 20, 80, or 160 mg/kg/day) to male and female rats (mated with drug-naïve females and males, respectively) resulted in no adverse effects on fertility or reproductive performance. Plasma exposures (AUC) at the highest dose tested are approximately 30 times that in humans at the MRHD.

## 14 CLINICAL STUDIES

The efficacy of UBRELVY for the acute treatment of migraine was demonstrated in two randomized, double-blind, placebo-controlled trials [Study 1 (NCT02828020) and Study 2 (NCT02867709)]. Study 1 randomized patients to placebo (n=559) or UBRELVY 50 mg (n=556) or 100 mg (n=557) and Study 2 randomized patients to placebo (n=563) or UBRELVY 50 mg (n=562). In all studies, patients were instructed to treat a migraine with moderate to severe

headache pain intensity. A second dose of study medication (UBRELVY or placebo), or the patient's usual acute treatment for migraine, was allowed between 2 to 48 hours after the initial treatment for a non-responding or recurrent migraine headache. Up to 23% of patients were taking preventive medications for migraine at baseline. None of these patients were on concomitant preventive medication that act on the CGRP pathway.

The primary efficacy analyses were conducted in patients who treated a migraine with moderate to severe pain. The efficacy of UBRELVY was established by an effect on pain freedom at 2 hours post-dose and most bothersome symptom (MBS) freedom at 2 hours post-dose, compared to placebo, for Studies 1 and 2. Pain freedom was defined as a reduction of moderate or severe headache pain to no pain, and MBS freedom was defined as the absence of the self-identified MBS (i.e., photophobia, phonophobia, or nausea). Among patients who selected an MBS, the most commonly selected was photophobia (56%), followed by phonophobia (24%), and nausea (19%).

In both studies, the percentage of patients achieving headache pain freedom and MBS freedom 2 hours post-dose was significantly greater among patients receiving UBRELVY compared to those receiving placebo (see Table 3). Table 3 also presents the results of the analyses of the percentage of patients achieving pain relief at 2 hours (defined as a reduction in migraine pain from moderate or severe to mild or none) post-dose and the percentage of patients achieving sustained pain freedom between 2 to 24 hours post-dose.

The incidence of photophobia and phonophobia was reduced following administration of UBRELVY at both doses (50 mg and 100 mg) as compared to placebo.

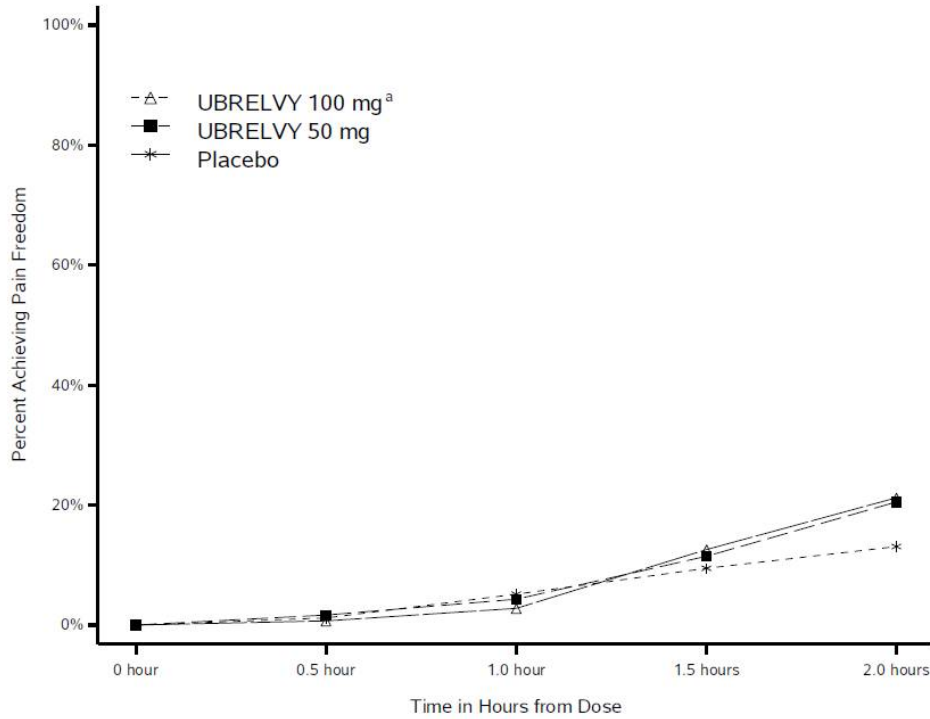
**Table 3: Migraine Efficacy Endpoints for Study 1 and Study 2**

	Study 1			Study 2	
	UBRELVY 50 mg	UBRELVY 100 mg	Placebo	UBRELVY 50 mg	Placebo
<b>Pain Free at 2 hours</b>					
N	422	448	456	464	456
% Responders	19.2	21.2	11.8	21.8	14.3
Difference from placebo (%)	7.4	9.4		7.5	
p value	0.002	<0.001		0.007	
<b>Most Bothersome Symptom Free at 2 hours</b>					
N	420	448	454	463	456
% Responders	38.6	37.7	27.8	38.9	27.4
Difference from placebo (%)	10.8	9.9		11.5	
p value	<0.001	<0.001		<0.001	
<b>Pain Relief at 2 hours</b>					
N	422	448	456	464	456
% Responders	60.7	61.4	49.1	62.7	48.2
p value	<0.001	<0.001		<0.001	
<b>Sustained Pain Freedom 2-24 hours</b>					
N	418	441	452	457	451
% Responders	12.7	15.4	8.6	14.4	8.2
p value	*NS	0.002		0.005	

\* Not statistically significant (NS)

Figure 1 presents the percentage of patients achieving migraine pain freedom within 2 hours following treatment in Studies 1 and 2.

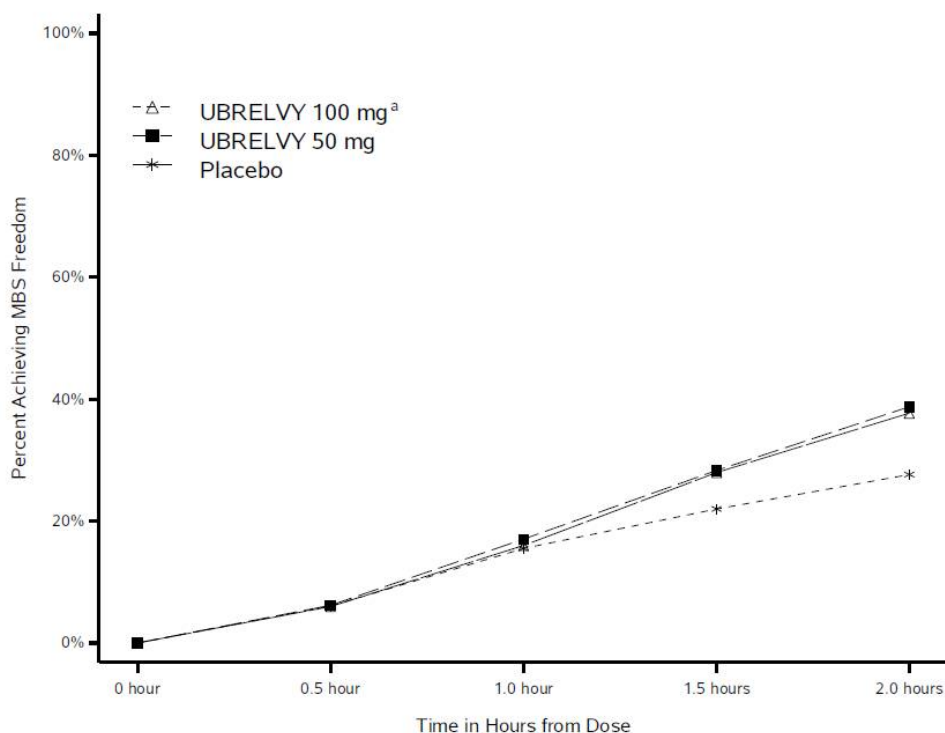
**Figure 1: Percentage of Patients Achieving Pain Freedom within 2 Hours in Pooled Studies 1 and 2**



<sup>a</sup> The 100 mg arm was only included in Study 1.

Figure 2 presents the percentage of patients achieving MBS freedom within 2 hours in Studies 1 and 2.

**Figure 2: Percentage of Patients Achieving MBS Freedom within 2 Hours in Pooled Studies 1 and 2**



<sup>a</sup> The 100 mg arm was only included in Study 1.

## 16 HOW SUPPLIED/STORAGE AND HANDLING

### 16.1 How Supplied

UBRELVY 50 mg is supplied as white to off-white, capsule-shaped, biconvex tablets debossed with “U50” on one side in unit-dose packets (each packet contains 1 tablet):

- Box of 10 Packets, NDC: 0023-6498-10
- Box of 16 Packets, NDC: 0023-6498-16
- Box of 30 Packets, NDC: 0023-6498-30

UBRELVY 100 mg is supplied as white to off-white capsule-shaped, biconvex tablets debossed with “U100” on one side in unit-dose packets (each packet contains 1 tablet):

- Box of 10 Packets, NDC: 0023-6501-10
- Box of 16 Packets, NDC: 0023-6501-16
- Box of 30 Packets, NDC: 0023-6501-30

### 16.2 Storage and Handling

Store between 20°C and 25°C (68°F and 77°F); excursions permitted between 15°C and 30°C (59°F and 86°F) [see *USP Controlled Room Temperature*].

## 17 PATIENT COUNSELING INFORMATION

Advise the patient to read the FDA-approved patient labeling (Patient Information).

### Hypersensitivity Reactions

Inform patients about the signs and symptoms of hypersensitivity reactions and that these reactions can occur with UBRELVY. Advise patients to discontinue UBRELVY and seek immediate medical attention if they experience any symptoms of serious hypersensitivity reactions [*see Warnings and Precautions (5.1)*].

### Drug Interactions

Inform patients that UBRELVY may interact with certain other drugs; therefore, advise patients to report to their healthcare provider the use of any other prescription medications, over-the-counter medications, or herbal products [*see Contraindications (4) and Drug Interactions (7.1, 7.2, 7.3)*]. Advise patients to inform their healthcare provider of grapefruit juice intake because a dosage modification is recommended with co-administration.

### Pregnancy

Advise patients to notify their healthcare provider if they become pregnant during treatment or plan to become pregnant. Encourage pregnant patients to enroll in the registry that monitors pregnancy outcomes in women exposed to UBRELVY during pregnancy [*see Use in Specific Populations (8.1)*].

### Lactation

Inform patients to notify their healthcare provider if they are breastfeeding or plan to breastfeed [*see Use in Specific Populations (8.2)*].

Manufactured for:

AbbVie Inc.

North Chicago, IL 60064

© 2023 AbbVie. All rights reserved.

UBRELVY and its design are trademarks of Allergan Pharmaceuticals International Limited, an AbbVie company.

20079163 June 2023

**Patient Information**  
**UBRELVY® (you-brel-vee)**  
(ubrogepant)  
tablets, for oral use

**What is UBRELVY?**

UBRELVY is a prescription medicine used for the acute treatment of migraine attacks with or without aura in adults. UBRELVY is not used to prevent migraine headaches. It is not known if UBRELVY is safe and effective in children.

**Who should not use UBRELVY?**

**Do not take UBRELVY if you are**

- taking medicines known as a strong CYP3A4 inhibitor, such as ketoconazole, clarithromycin, or itraconazole. Ask your healthcare provider if you are not sure if you are taking any of these medicines. Your healthcare provider can tell you if it is safe to take UBRELVY with other medicines.
- allergic to ubrogepant or any of the ingredients in UBRELVY. See the end of this Medication Guide for a complete list of ingredients in UBRELVY.

**Before you take UBRELVY tell your healthcare provider about all of your medical conditions, including if you:**

- have liver problems
- have kidney problems
- are pregnant or plan to become pregnant. It is not known if UBRELVY will harm your unborn baby.
  - Pregnancy Registry: There is a pregnancy registry for women who take UBRELVY. The purpose of this registry is to collect information about the health of you and your baby. Talk to your healthcare provider or call 1-833-277-0206 to enroll in this registry. You can also visit <http://empresspregnancyregistry.com>.
- are breastfeeding or plan to breastfeed. It is not known if UBRELVY passes into your breast milk.

**Tell your healthcare provider about all the medicines you take**, including prescription and over-the-counter medicines, vitamins, and herbal supplements.

Especially tell your healthcare provider if you take any of the following, as your healthcare provider may need to change the dose of UBRELVY:

- |              |                |                 |                   |               |
|--------------|----------------|-----------------|-------------------|---------------|
| • verapamil  | • cyclosporine | • ciprofloxacin | • fluconazole     | • fluvoxamine |
| • phenytoin  | • barbiturates | • rifampin      | • St. John's Wort | • quinidine   |
| • carvedilol | • eltrombopag  | • curcumin      |                   |               |

These are not all of the medicines that could affect how UBRELVY works. Your healthcare provider can tell you if it is safe to take UBRELVY with other medicines.

Keep a list of medicines you take to show to your healthcare provider or pharmacist when you get a new medicine.

**How should I take UBRELVY?**

- Take UBRELVY exactly as your healthcare provider tells you to take it.
- Take UBRELVY with or without food.
- Most patients can take a second tablet 2 hours after the first tablet, as needed.
- You should not take a second tablet within 24 hours if you consume grapefruit or grapefruit juice or are taking medications that may include:
  - verapamil
  - cyclosporine
  - ciprofloxacin
  - fluconazole
  - fluvoxamine
- It is not known if it is safe to take UBRELVY for more than 8 migraine headaches in 30 days.
- You should write down when you have headaches and when you take UBRELVY so you can talk to your healthcare provider about how UBRELVY is working for you.
- If you take too much UBRELVY, call your healthcare provider or go to the nearest hospital emergency room right away.

**What are the possible side effects of UBRELVY?**

**UBRELVY may cause serious side effects, including:**

- Allergic reactions. Allergic reactions can happen after you take UBRELVY. Most reactions happened within hours and were not serious. Some reactions may occur days after taking UBRELVY. Call your healthcare provider or get emergency help right away if you have any of the following symptoms, which may be part of an allergic reaction:
  - Swelling of the face, mouth, tongue, or throat
  - Trouble breathing

The most common side effects of UBRELVY are nausea and sleepiness.

These are not all of the possible side effects of UBRELVY. Call your healthcare provider for medical advice about side effects. You may report side effects to FDA at 1-800-FDA-1088.

**How should I store UBRELVY?**

- Store UBRELVY at room temperature between 68°F to 77°F (20°C to 25°C).

**Keep UBRELVY and all medicines out of the reach of children.**

**General information about the safe and effective use of UBRELVY.**

Medicines are sometimes prescribed for purposes other than those listed in a Patient Information leaflet. Do not use UBRELVY for a condition for which it was not prescribed. Do not give UBRELVY to other people, even if they have the same symptoms you have. It may harm them. You can ask your pharmacist or healthcare provider for information about UBRELVY that is written for health professionals.

**What are the ingredients in UBRELVY?**

**Active ingredient:** ubrogepant

**Inactive ingredients:** colloidal silicon dioxide, croscarmellose sodium, mannitol, microcrystalline cellulose, polyvinylpyrrolidone vinyl acetate copolymer, sodium chloride, sodium stearyl fumarate, and vitamin E polyethylene glycol succinate.

Manufactured for:

AbbVie Inc.

North Chicago, IL 60064

© 2023 AbbVie. All rights reserved.

UBRELVY and its design are trademarks of Allergan Pharmaceuticals International Limited, an AbbVie company.

This Patient Package Insert has been approved by the U.S. Food and Drug Administration  
20079163

Issued: 6/2023