

THE
MIKE FARRELL
COLLECTION
OF INDEPENDENT MAILES

INCLUDING THE HISTORY, FORGERIES, & FANTASIES OF
UNITED STATES, LOCAL POSTS, CARRIERS,
INDEPENDENT MAIL ROUTES, & EXPRESS CO.S

HALE & CO.

The information and identification within these selections is the individual work of the Farrell Collection. It is always recommended to consult multiple sources for additional information or opinions. Local post company descriptions are based on information available at the time of writing. Descriptions in the Farrell Collection were written based on personal research and sources including, but not limited to: Articles in the Carriers and Locals Society's The Penny Post; Amos Media's Scott Catalogue; Patton's The Private Local Post of the United States; Springer's Handbook of North American Cinderella Stamps; Lyons' Identifier for Carriers, Locals, Fakes Forgeries and Bogus Posts of the United States; articles in the USPCS's The Chronicle; Mosher's Catalog of Private Express Labels and Stamps; The Eastern Independent Mail Company Study Group's Eastern Independent Mail Companies and Express Mail Companies 1840-1845; Elliot Perry's Pat Paragraphs; James N. Drummond's Catalog of Philatelic Miscellany; and the notes of George Sloane and Gordon Stimmell.

Colors listed for stamps and forgeries are the opinions of the Farrell Collection based on viewing physical copies of the pieces under consistent lighting. Colors in the .pdfs may be slightly inaccurate due to manipulations from the scanning process, computer monitor settings, or (in event that the files are printed for offline viewing) the printing process.

Unless otherwise noted, stamps are identified by their Scott Catalogue numbers and forgeries are identified by their Lyons Identifier type. Scott numbers in parenthesis under listed forgeries represent approximately what stamp the forgery is attempting to imitate.

Copyright Amos Media Company - 2018

The Scott Numbers are the copyrighted property of Amos Media Company, and are used here under a licensing agreement with Amos. The marks Scott and Scott's are Registered in the U.S. Patent and Trademark Office, and are trademarks of Amos Media Company. No use may be made of these marks or of material in this publication, which is reprinted from a copyrighted publication of Amos Media Company., without the express written permission of Amos Media Company, Sidney, Ohio 45365.

HALE'S FOREIGN LETTER OFFICE

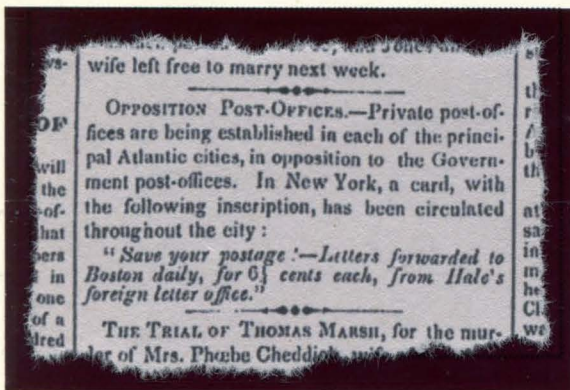
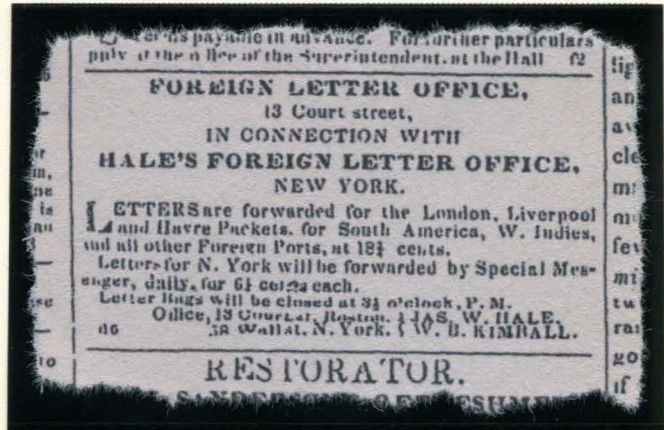
Hale's News Room & Foreign/Ship Letter Office was something of a precursor to Hale & Co. independent mail; although the forwarding agency continued running simultaneously alongside the domestic mail route as a separate service.

In 1836, James W. Hale moved to New York after a career at sea. There he was employed by Hudson's News Room, over which he eventually took proprietorship. Hale changed the name of the office to the Tontine Reading Room, although it was also referred to in publications as "Hale's News Room". From here, Hale worked as an agent for the steamship *John W. Richmond* that traveled between New York, Connecticut, and Rhode Island.

While managing the news room, Hale arranged for the forwarding of letters to foreign ports. He started this service sometime in 1838. Advertisements in 1843 listed the service as "Hale's Ship Letter Office" at 58 Wall Street, New York.

When Hale moved to Boston to open the office for his independent mail service in 1843, he continued to offer the foreign letter service via forwarding to the New York office. Likewise, Hale's Foreign Letter Office in New York would forward to Hale & Co. in Boston.

HALE'S FOREIGN LETTER OFFICE AD FROM THE *BAY STATE DEMOCRAT* BOSTON, MASSACHUSETTS NOVEMBER 4, 1844



HALE'S FOREIGN LETTER OFFICE AD FROM THE *DOLLAR NEWSPAPER* PHILADELPHIA, PENNSYLVANIA JANUARY 24, 1844

Advertisements show that the rate's charged by Hale's Foreign Letter Office were 12½¢ for transatlantic deliveries. Letters between New York and Boston were charged at Hale & Co. independent mail route's rate of 6¼¢.

The office used four known handstamp types to mark forwarded letters. Covers featuring these handstamps are recorded up to 1842.

James Hale ceased service at his Foreign Letter Office in 1845, at the same time that the Hale & Co. offices closed.

HALE'S FOREIGN LETTER OFFICE

The following letter was forwarded to London, England from Hale's Foreign Letter Office in New York City. This over was forwarded with a red, four-line handstamp reading "Forwarded From / HALE'S NEWS ROOM / And Ship Letter Office / NEW-YORK".

Manuscript docketing on the reverse reads "New York 20th Decbr 1841 / forwarded by Your mo obdt srvt, pr Edw. Bech & Co." and a note in the same hand on the front directs the letter delivery "per Westminster". A black "Portsmouth Ship Letter" handstamp indicates that it arrived in England at Portsmouth before delivery to London. Two receiving stamps date its arrival in London on January 15, 1842.



RED "HALE'S NEWS ROOM" HANDSTAMP (NY-C)
DECEMBER 20, 1841
-PHOTOCOPY OF REVERSE-
"PORTSMOUTH SHIP LETTER" BACKSTAMP
RED LONDON RECEIVING DATESTAMPS

Additional docketing on the back of this cover indicates that the letter originated in New Orleans and mailed on December 2nd. It includes docketing that the letter was received in 1842 on January 15 and answered on the 3rd of February.

HALE & COMPANY

James W. Hale, a New York forwarding agent, began his letter express in 1843. This independent mail company had offices in other states and cities, including Boston, Philadelphia, and Detroit; they also had connections with other mail routes to exchange mail. One of the largest independent mail carriers in the United States, the range of the company extended west to Chicago and east overseas to Europe; and advertised delivery to more than 140 different towns.

Hale & Co. charged 6¼¢ for deliveries, undercutting the government post office. Although well liked by the public, Hale & Co. faced intense pressure from the government after postal reforms in 1845. This pressure eventually forced them to close in 1845, at the peak of their success.

HALE & CO. ADVERTISEMENT,
LISTING OFFICES AND AGENTS,
FROM THE *DAILY ATLAS*
BOSTON, MASSACHUSETTS
AUGUST 27, 1844

Hale & Co. offered adhesive stamps for prepayment of deliveries. Stamps were sold in full sheets of twenty for \$1.



75L1
GENUINE
6¢ LIGHT BLUE
ON WHITE
PELURE PAPER

HALE & CO'S INDEPENDENT MAIL ARRANGEMENT. POSTAGE, 6¼ CENTS. OFFICE 23 STATE STREET—BOSTON.

OFFICES AND AGENTS.

BOSTON—Hale & Co. 23 State st.	CAMDEN—E. Cushing.
NEW YORK—Hale & Co. 36 Wall st.	BANGOR—Jerome & Co.
PROVIDENCE—Hale & Co. corner of North Main st. & Market sq.	BATH—Peter Knights.
PHILADELPHIA—Hale & Co. 37 South Third st.	GARDNER—H. Smith & Co.
NAHANT—P. Drew, Esq.	HALLOWELL—Glazier, Masters & Smith.
NEW BEDFORD—AMOS BATES, 92 Union st.	AUGUSTA—E. Fernald.
WORCESTER—D. Gleason, 135 Main street.	EASTPORT—J. Garrison.
HAYVERHILL—J. Bradley.	LUBEC—Andrew King.
NORWICH—John H. Grace, 130 Main st.	CALAIS—Bedlow & LeFavor.
SALEM—S. Phelps, 14 Washington street.	ST. ANDREW'S, N. B.—Thos. Sims.
MANCHESTER—J. S. Tappan.	ST. JOHN, N. B.—J. D. Andrews.
DANVERS—F. W. Simpson.	NORTHAMPTON—A. W. Thayer.
TOFTSFIELD—Joel Lake.	SPRINGFIELD—W. Bishop.
NEWBURYPORT—H. T. Crofoot.	HARTFORD—Hale & Co.
PORTSMOUTH—C. E. Blount.	NEW HAVEN—Webb & Plant.
PORTLAND—C. Racklyett, Canal Bank Building.	PITTSFIELD—E. P. Little.
WEST THOMASTON.	ALBANY—Pomeroy & Co. 5 Exchange.
EAST THOMASTON—O. B. Fales.	UTICA—D. H. Davidson.
BELEAST—D. Lane, Jr.	ROME—B. Leonard.
BUCKSPORT—F. Sofford.	SYRACUSE—J. A. Smith.
FRANKFORT—J. Hetscy, Jr.	AUBURN—J. Lightbody.
HAMPDEN—S. Davis.	GENEVA—John Farns.
	CANANDAIGUA—J. G. Shepard.
	TROY—L. Farwell, 230 River st.
	ROCHESTER—H. Hastings.
	BATAVIA—L. A. Smith.
	RUFFALO—Charles Wells.

Letters forwarded to CLEVELAND, DETROIT, and CHICAGO—POSTAGE 12½ CENTS.

MAILS CLOSE FOR

NEW BEDFORD and PROVIDENCE, at 7 A. M. and 8 P. M., Daily.
ALBANY, TROY, and the WEST, at 8 P. M., Daily.
WORCESTER, NORWICH, NEW YORK, and PHILADELPHIA, at 4 P. M., Daily.
NAHANT, at 8½-2 A. M., Daily.
SALEM, DANVERS, TOFTSFIELD, and MANCHESTER, at 12 M. and 5 P. M., Daily.
NEWBURYPORT, PORTSMOUTH and PORTLAND, at 1½-4 P. M., Daily.
BATH, HALLOWELL and GARDNER, at 6 P. M., Daily.
BANGOR and INTERMEDIATE PLACES, on Tuesdays and Fridays, at 4 P. M.
CALAIS, EASTPORT, ST. JOHN and ST. ANDREW'S, on Mondays and Thursdays, 11 A. M.
*POSTAGE TO ST. JOHN, &c. 12½ CENTS.
Particular attention paid to Foreign Letters by our Agents.
J. W. T. & F. S. HALE & CO.

SOUTHERN & WESTERN MERCHANTS

The first stamps offered by Hale & Co. were issued in 1844. These stamps were printed with the address "13 Court St." in the center. This was the address of Hale's office during the post's first year.

Hale & Co. produced the first mechanically-separated and die-cut stamps. Two different processes were used: one method which cut the octagonal stamps to shape, and another method that cut the stamps into squares. Stamps manually cut or torn from sheets are also known.

HALE & COMPANY

Featured here is the only known block of the first issue Hale & Co. "13 Court St." stamp. Each stamp in this block is marked with the manuscript initials of Amos Bates, the Hale & Co. agent for New Bedford, Massachusetts. Agents sometimes applied control marks to their stamp supply prior to their sale. It is sometimes debated as to whether to classify control marks these as precancels.



75L1 - GENUINE
6¢ LIGHT BLUE ON WHITE
BLOCK OF TWELVE
MAGENTA "AB" MANUSCRIPT INITIALS
PREVIOUSLY OF THE PULIAFITO COLLECTION

HALE & COMPANY

These first stamps were initially printed on semi-translucent pelure paper, with subsequent printings on a medium white wove paper.



75L1A
GENUINE
6¢ LIGHT BLUE
ON WHITE
PELURE PAPER
RED P-8 CANCEL
"PAID" HANDSTAMP



75L1
GENUINE
6¢ LIGHT BLUE
ON WHITE
WOVE PAPER
MANUSCRIPT CANCEL
"X" PENSTROKE

The Hale & Co. offices used a wide variety of cancellations on stamps. These different markings are extensively catalogued in the book *Eastern Independent Mail and Express Mail Companies 1840-1845*.



75L1
GENUINE
6¢ LIGHT BLUE
ON WHITE
RED C-3 CANCEL
"COLLECT" HANDSTAMP



75L1
GENUINE
6¢ LIGHT BLUE
ON WHITE
RED P-4 CANCEL
"PAID" HANDSTAMP



75L1
GENUINE
6¢ LIGHT BLUE
ON WHITE
RED P-8 CANCEL
"PAID" HANDSTAMP

HALE & COMPANY

Manuscript handstamps were common. The examples below were mailed from the Philadelphia office. From 1844 until around 1845, stamps in the Philadelphia office were cancelled with a manuscript "P".



75L1
GENUINE
6¢ LIGHT BLUE
ON WHITE
ON PIECE
BLACK PEN CANCEL
PHILADELPHIA "P"

In spring of 1845 (from around April until June), a manuscript "R" was used to cancel stamps in the Philadelphia office. The reason for the letter "R" is unknown, but it is possible that it was the initial of the Hale & Co. agent for the office.



75L1
GENUINE
6¢ LIGHT BLUE
ON WHITE
CUT TO SHAPE
BLACK PEN CANCEL
PHILADELPHIA "R"



75L1
GENUINE
6¢ LIGHT BLUE
ON WHITE
SQUARE CUT
BLACK PEN CANCEL
PHILADELPHIA "R"

HALE & COMPANY

The standard mail rate for domestic letters through Hale & Co.'s service was 6¢ in US currency (or 6¼¢ Spanish real). This paid for delivery of letters or single letter sheets weighing no more than half an ounce. For heavier letters, additional rates were applied. The extra cost could be paid with multiple stamps. The largest recorded use of multiple stamps on a Hale & Co. cover is five.

Another possible reason for the use of multiple stamps on covers is the payment of higher rates to western destinations. Hale & Co.'s routes were based primarily on the east coast of the United States. Several Hale & Co. advertisements published in 1844 mention a 12½¢ (double) rate for delivery to Midwest locations, including Chicago and Detroit.



75L1 - MULTIPLE ON PIECE
GENUINE
6¢ LIGHT BLUE
ON WHITE
PELURE PAPER
UNCANCELLED
TIED TO PIECE BY WRITING



75L1 - MULTIPLE ON PIECE
GENUINE
6¢ LIGHT BLUE
ON WHITE
PELURE PAPER
RED F-29 CANCEL
FORWARDING HANDSTAMP



75L1 - MULTIPLE ON PIECE
GENUINE
6¢ LIGHT BLUE
ON WHITE
PELURE PAPER
MANUSCRIPT CANCEL
TIED TO PIECE BY + SHAPED PENSTROKE

HALE & COMPANY

The first Hale & Co. stamps were printed first in blue, then in shades of red to red-orange. The reason for these different colored stamps is unknown, as the blue stamps continued use at the same time. Records of surviving covers show that these red stamps were put into use sometimes around summer of 1844.



75L2
GENUINE
6¢ RED (SHADE)
ON BLuish
CUT TO SHAPE
HANDSTAMP CANCEL
RED C-7



75L2
GENUINE
6¢ RED (SHADE)
ON BLuish
CUT SQUARE
MANUSCRIPT CANCEL

Hale & Co. used both handstamps and manuscript markings to cancel their stamps. The example below is New Bedford, Massachusetts and is cancelled by a red "Forwarded by Hale & Co. From New Bedford" oval handstamp.

The stamp is also marked with an "AB" in manuscript. This is a control mark by the New Bedford agent, Amos Bates.



75L2
GENUINE
6¢ RED (SHADE)
ON BLuish
CUT TO SHAPE
HANDSTAMP CANCEL
RED F-24
MANUSCRIPT CANCEL
"AB" AMOS BATES

HALE & COMPANY

In May of 1844 the address printed on the stamps had become outdated. Hale & Co. moved their offices to 23 State Street. After this address change, the previously printed stamps continued use, although modifications were applied to some of the supply.

The examples below have the address deleted by black penstrokes. Eighteen examples of stamps with this modification are recorded on cover.



75L1VAR
GENUINE
6¢ LIGHT BLUE
ON WHITE
ON PIECE
ADDRESS DELETED
BY MANUSCRIPT LINES
GUTMAN TYPE-C
PF CERT #0350474



75L1VAR
GENUINE
6¢ LIGHT BLUE
ON WHITE
ON PELURE PAPER
ADDRESS DELETED
BY MANUSCRIPT LINES
GUTMAN TYPE-C

The red stamps are also known with the address omitted by manuscript. The example below, with address omitted by black dashes, is from Portsmouth, New Hampshire. Eight examples of this kind are known on cover, and others off cover are also known.

This example has also been precanceled with horizontal and vertical lines, and marked with "P" and "NH" control markings.



75L2VAR
GENUINE
6¢ RED (SHADE)
ON BLuish
CUT TO SHAPE
ADDRESS DELETED
BY MANUSCRIPT DASHES
GUTMAN TYPE-D
PEN PRECANCEL
MANUSCRIPT CANCEL
PORTSMOUTH "P" & "NH"

HALE & COMPANY

A new "type" of Hale & Co. stamp was created by applying a handstamped overprint featuring the new address to some of the remainder stamps. These overprinted stamps represent the first hand-stamped overprints in philatelic history. They are very rare.



7514
GENUINE
6¢ LIGHT BLUE
ON WHITE
TIED TO PIECE
RED ADDRESS OVERPRINT
GUTMAN TYPE-E
BLACK C-9 CANCEL
"COLLECT" HANDSTAMP

HALE & COMPANY

Shortly after the move to 23 State Street, Hale & Co. printed a new issue of stamps using the previous design but with the street address removed. These new stamps were printed in shades of blue on medium paper.

It is likely that there were multiple printings of these "Type II" stamps, as the plate was visibly damaged at some point during the period in which the stamps were used. This includes a small piece missing on the left side of stamps printed from the top left position.



75L5
GENUINE
6¢ BLUE
ON WHITE
UNUSED



75L5
GENUINE
6¢ BLUE
ON WHITE
RED F-3 CANCEL
BOSTON FORWARDED
HANDSTAMP



75L5
GENUINE
6¢ BLUE
ON WHITE
RED C-3 CANCEL
"COLLECT" HANDSTAMP



75L5
GENUINE
6¢ BLUE
ON WHITE
RED C-9 CANCEL (x2)
NEW BEDFORD
"COLLECT" HANDSTAMP



75L5
GENUINE
6¢ BLUE
ON WHITE
RED C-10 CANCEL
NEW BEDFORD
"COLLECT" HANDSTAMP
MAGENTA "AB" INITIALS

The "AB" initials written on the stamp featured above is a control marking applied by Amos Bates, the Hale & Co. agent for New Bedford, Massachusetts. Bates also ran the Bates & Co. express line from New Bedford to New York, which he advertised closely with Hale & Co.

Control marks were usually applied to the stamps prior to sale. The example is marked both with the "AB" initials control and with a red "Collect 6 Cents for N. Bedford Office" boxed handstamp.

HALE & COMPANY



75L5
GENUINE
6¢ BLUE
ON WHITE
RED P-1 CANCEL
"PAID AT BOSTON"
HANDSTAMP



75L5
GENUINE
6¢ BLUE
ON WHITE
RED P-8 CANCEL
"PAID" HANDSTAMP

Hale & Co. offered a local delivery service at some of their destinations. While the service was not likely available at every location, it was known used in several cities. Offices in Boston, New York and New Bedford used handstamps to mark letters for the additional local delivery.

The example below is a stamp (cancelled with a red "Hale & Co.'s Mail / Paid at Boston" handstamp) tied to a piece of cover marked with local delivery service markings. These include a manuscript note "P.P.P." and the red Boston office straightline handstamp "Penny Postage Paid".



75L5
GENUINE
6¢ BLUE
ON WHITE, TIED TO PIECE
RED P1 CANCEL
"PAID AT BOSTON" HANDSTAMP
MANUSCRIPT "P.P.P."
RED PP-1 HANDSTAMP : BOSTON
"PENNY POSTAGE PAID"

HALE & COMPANY

Manuscript cancels came in a wide variety of types. Some letters, initials, or markings can be identified to specific offices or agents.



75L5
GENUINE
6c BLUE
ON WHITE
MANUSCRIPT "B"
FOR DELIVERY
TO BOSTON



75L5
GENUINE
6c BLUE
ON WHITE
MAGENTA "T"
NORTHAMPTON AGENT THAYER
MANUSCRIPT "C"
"C" FOR CANCEL



75L5
GENUINE
6c BLUE
ON WHITE
MANUSCRIPT "R"
FROM PHILADELPHIA
SPRING, 1845



75L5
GENUINE
6c BLUE
ON WHITE
MANUSCRIPT "X"



75L5
GENUINE
6c BLUE
ON WHITE
MANUSCRIPT LINES &
PARTIAL RED HANDSTAMPS



75L5
GENUINE
6c BLUE
ON WHITE
MANUSCRIPT LINES

Hale & Co. were the first postal service known to use precancels on adhesive stamps. These precancels were usually in the form of manuscript lines throughout an entire sheet of stamps. Precancelled Hale & Co. Stamps are known used from Boston, New York, Portsmouth and other cities.



75L5
GENUINE
6c BLUE
ON WHITE
PRECANCEL
MANUSCRIPT + SHAPE

HALE & COMPANY

Manuscript cancels came in a wide variety of types. Some letters, initials, or markings can be identified to specific offices or agents. Some stamps received multiple cancels, either from the same office, or from multiple offices as the mail passed through.



75L5
GENUINE
6¢ BLUE
ON WHITE
PRECANCEL
MAGENTA H. LINE
MANUSCRIPT "C"



75L5
GENUINE
6¢ BLUE
ON WHITE
PRECANCEL
MAGENTA H. & V. LINES
MANUSCRIPT DOTS



75L5
GENUINE
6¢ BLUE
ON WHITE
PRECANCEL
BLACK H. & V. LINES
MANUSCRIPT "C"



75L5
GENUINE
6¢ BLUE
ON WHITE
MANUSCRIPT "R"
PHILADELPHIA



75L5
GENUINE
6¢ BLUE
ON WHITE
MANUSCRIPT "H"
HARTFORD



75L5
GENUINE
6¢ BLUE
ON WHITE
MANUSCRIPT "S"
SALEM



75L5
GENUINE
6¢ BLUE
ON WHITE
MANUSCRIPT "C" & "H"
"H" FOR HOLLISTON



75L5
GENUINE
6¢ BLUE
ON WHITE
RED F-24 CANCEL
MANUSCRIPT "NB"
NEW BEDFORD



75L5
GENUINE
6¢ BLUE
ON WHITE
MANUSCRIPT LINE & "X"
MANUSCRIPT "P / NH"
PORTSMOUTH



75L5
GENUINE
6¢ BLUE
ON WHITE
MANUSCRIPT "X"
MANUSCRIPT "CR"

HALE & COMPANY

Stampless covers can often be identified as Hale & Co. deliveries by the wide variety of handstamps used by the company's offices. "Collect" handstamps usually took the place of prepaid stamps to indicate that the rate was to be paid on delivery. On the cover below, the collect handstamp is modified in manuscript, changing the rate from the usual 6¼¢ to the 12½¢ double weight rate.

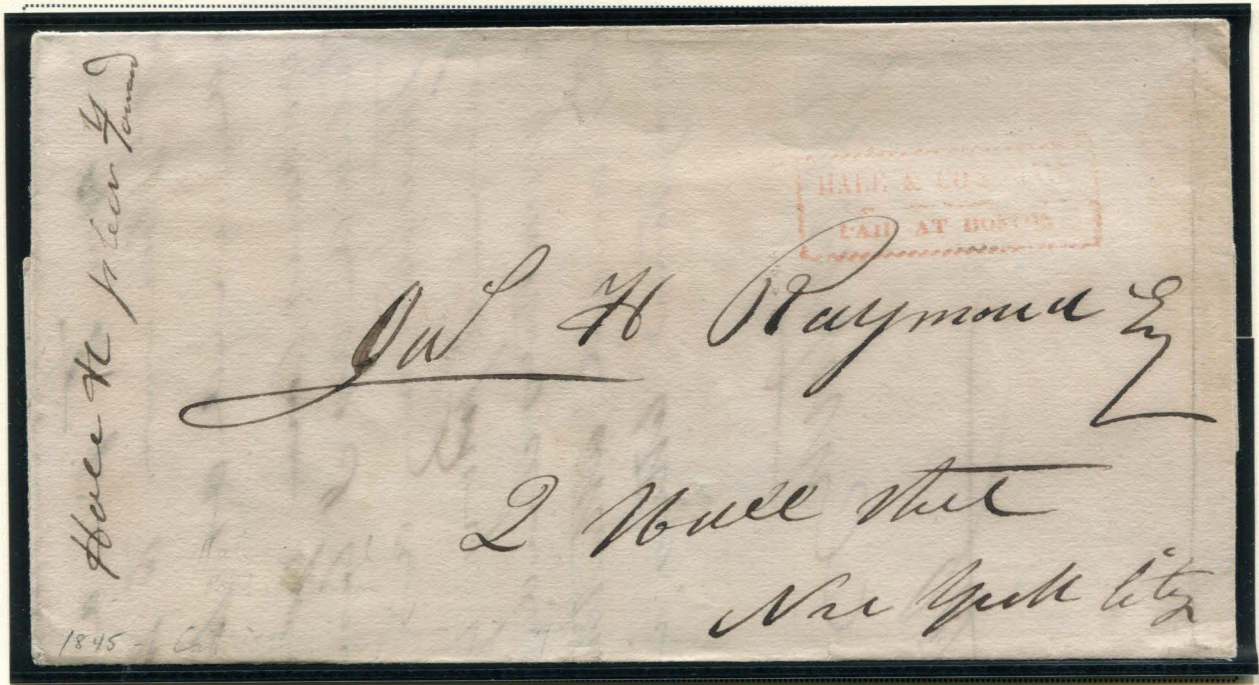
This cover was mailed to New York from the Hale & Co. office in Boston, Massachusetts. The letter, sent by Thomas Groom & Co., reports the shipping of a writing desk, and is dated September 15, 1844.



RED HALE & CO. (BOSTON) FORWARDING HANDSTAMP : F-3
BLACK HALE & CO. (BOSTON) COLLECT HANDSTAMP : C-4
DOCKETED SEPTEMBER 15, 1844
-REDUCED PHOTOCOPY OF LETTER-

HALE & COMPANY

The cover featured here was forwarded to New York by the Hale & Co. Office in Boston. A manuscript notation "Hale & Co. please forward" is written on the left side of the folded letter.



RED HALE & CO. (BOSTON) PAID HANDSTAMP ; P-1
MANUSCRIPT HALE & CO. FORWARDING NOTATION
DOCKETED JULY 28, 1845

This stampless cover was prepaid with a red boxed handstamp "Hale & Co.'s Mail / Paid at Boston".

HALE & COMPANY

The New Bedford, Massachusetts office of Hale & Co. used five unique handstamps, three of which included the city name. The cover featured here includes clear strikes of two different New Bedford handstamps.

BATES & CO.'S.
INDEPENDENT NEW YORK MAIL.
 BATES & CO., are prepared to forward letters to and from New York, with safety and despatch.
POSTAGE ON EACH LETTER—6 1-4 C.
TO BE PAID IN ADVANCE
 Leaves No 3, Wall street, Daily, at 4 1-2 o'clock, P.M. Office in New Bedford No 92, Union street
 jys0 BATES & CO.

HALE & CO.'S.,
INDEPENDENT MAIL ARRANGEMENTS.
 HALE & CO., are prepared to forward Letters to and from the following places, viz:
 From New Bedford to BOSTON, SPRINGFIELD, ALBANY, TROY, ROCHESTER, LYNN, SALEM, NEWBURYPORT, PORTLAND, BANGOR, and intermediate places To PROVIDENCE, and PHILADELPHIA.

POSTAGE 6 1-4c.—20 STAMPS for one \$1.00.

Offices and Agents.
 NEW BEDFORD—Amos Bates, 92, Union st.
 FAIRHAVEN—P V Miller.
 BOSTON—Hale & Co., 23, State st.

Amos Bates, who also managed his own Bates & Co. express to New York, was the agent for the New Bedford Hale & Co. Office. He often forwarded letters conjunctively between his own company and Hale & Co.'s routes.

BATES & CO. AND HALE & CO. ADVERTISEMENT FROM THE WHALEMAN'S SHIPPING LIST AND MERCHANTS' TRANSCRIPT NOVEMBER 26, 1844



RED HALE & CO. (NEW BEDFORD) FORWARDING HANDSTAMP : F-24
 RED NEW BEDFORD OFFICE COLLECT HANDSTAMP : C-10
 DOCKETED APRIL, 1845

The correspondence contained within the cover above discusses the prices of nails between two businessmen.

HALE & COMPANY

The Hale & Co. office in Norwich, Connecticut was run by John H. Grace. This office was an important stop in the mail route between Boston and Providence, Rhode Island. From this town, mail could be carried on steamship, or on the Norwich & Worcester Railroad.

The Norwich office used three unique handstamps, all stamped in black ink. The cover below features two of these handstamps. A manuscript note on the back reads: "Hale & Co. 58 Wall St., Courier & Enquirer Building".



BLACK HALE & CO. (NORWICH) FORWARDING HANDSTAMP : F-27
BLACK NORWICH OFFICE COLLECT HANDSTAMP : C-11
DOCKETED MARCH 17, 1845

The letter featured here was mailed by Norton, Converse & Co., a business in Norwich. It is addressed to New York grocers and wholesale dealers Dater, Miller & Co.

HALE & COMPANY

Hale & Co.'s New York City office in the Courier & Enquirer Building at 58 Wall Street was the headquarters of the business. The office used several different handstamps, including four unique "forwarded" stamps. The two covers featured here demonstrate two of these different handstamp types.



RED HALE & CO. (NEW YORK)
FORWARDING HANDSTAMP : F-28
"COURIER & ENQUIRER BUILDING" CURVED
RED HALE & CO.
COLLECT HANDSTAMP : C-2
DOCKETED SEPTEMBER 10, 1844



RED HALE & CO. (NEW YORK)
FORWARDING HANDSTAMP : F-29
"COURIER & ENQUIRER BUILDING" STRAIGHTLINE
RED HALE & CO.
COLLECT HANDSTAMP : C-2
DOCKETED DECEMBER 31, 1844

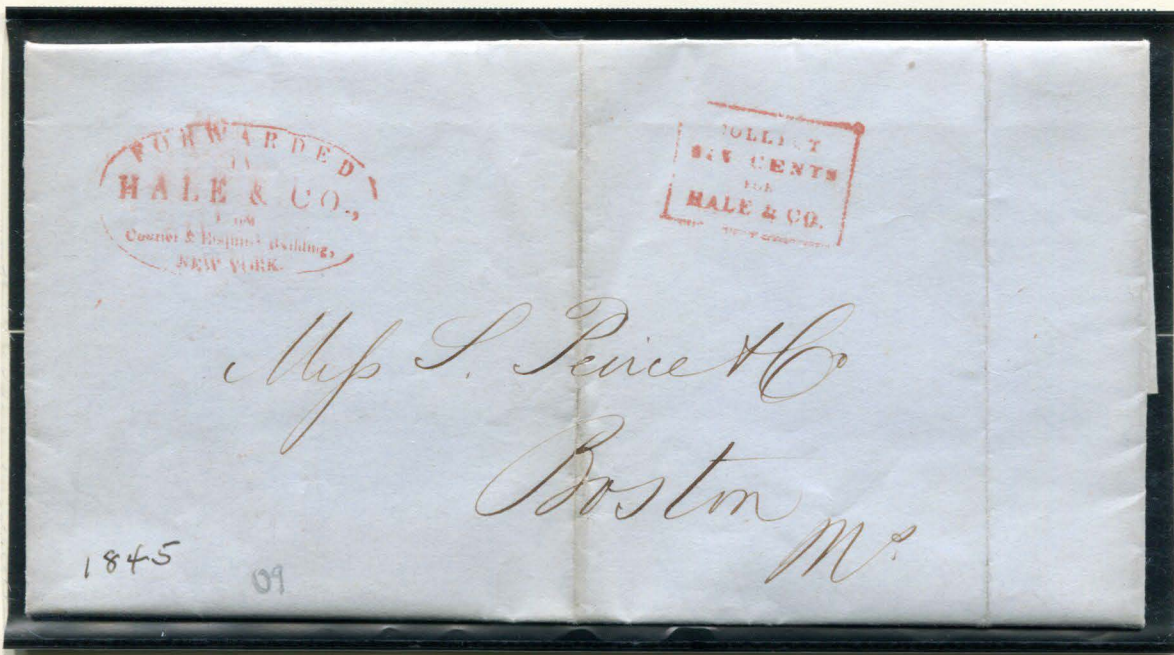
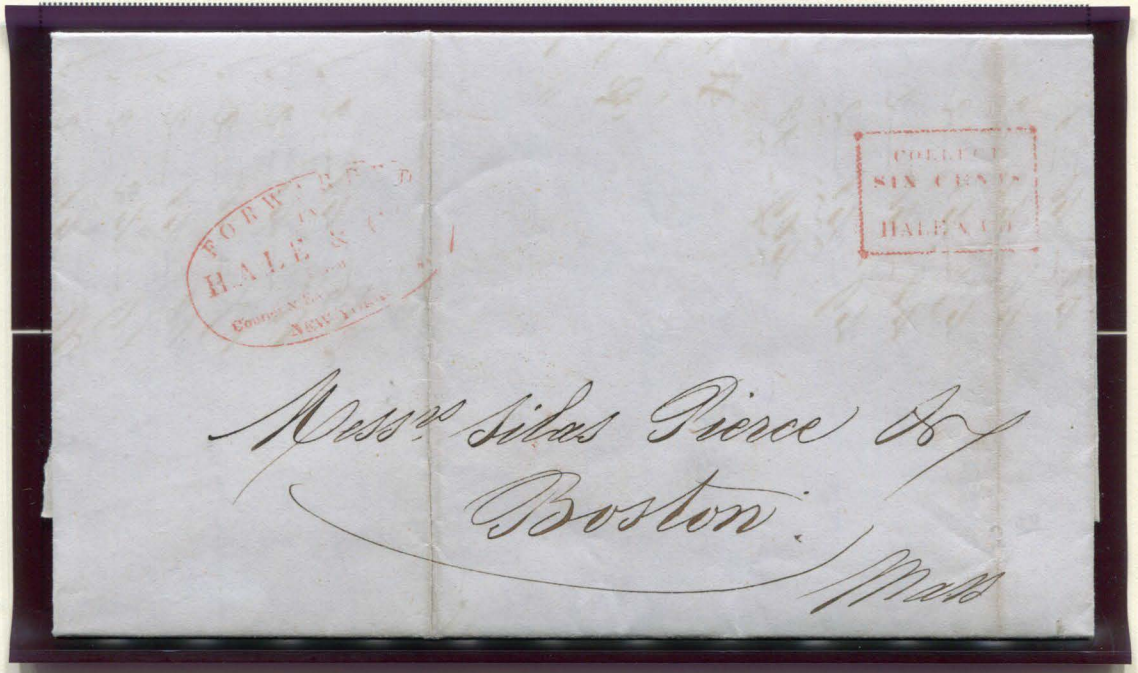
HALE & COMPANY

The covers featured here are both addressed to Boston grocer Silas Peirce & Co. Both letters were mailed from the Hale & Co. New York office with red handstamps. The first letter contains an invoice; the second cover is a letter from New York merchant Chamberlain & Co. advising Silas on produce to sell.



AT RIGHT: PORTRAIT OF SILAS PEIRCE, FOUNDER OF SILAS PEIRCE & CO.

RED HALE & CO., NEW YORK
FORWARDING HANDSTAMP : F-29
RED HALE & CO.
COLLECT HANDSTAMP : C-3
DOCKETED NOVEMBER 4, 1844



RED HALE & CO., NEW YORK
FORWARDING HANDSTAMP : F-29
RED HALE & CO.
COLLECT HANDSTAMP : C-3
DOCKETED MARCH 27, 1845

HALE & COMPANY

Featured here is another cover addressed to Silas Peirce. The a notation on the front instructs the letter to be mailed "pr Hales Express". The red "Collect Six Cents for Hale & Co." box handstamp was used at both the New York and the Boston office, making it difficult to determine from which office it originated.

Sales of 100 Bags Filberts for Ap. Prop. Silas Peirce & Co

<i>Sold Allen & Coitton</i>			
<i>100 Bags Filberts (N.Y.) 16082</i>			
<i>Jan 2^d</i>	<i>322-157 1/2 c 5/8</i>	<i>847 15</i>	
	<i>Per 2^d</i>	<i>16 94 830 21</i>	
<i>Charges</i>			
<i>Freight as per Bill</i>		<i>10 00</i>	

Engle

COLLECT SIX CENTS FOR HALE & CO.

Messrs Silas Peirce & Co

Boston

Mass

pr Hales Express

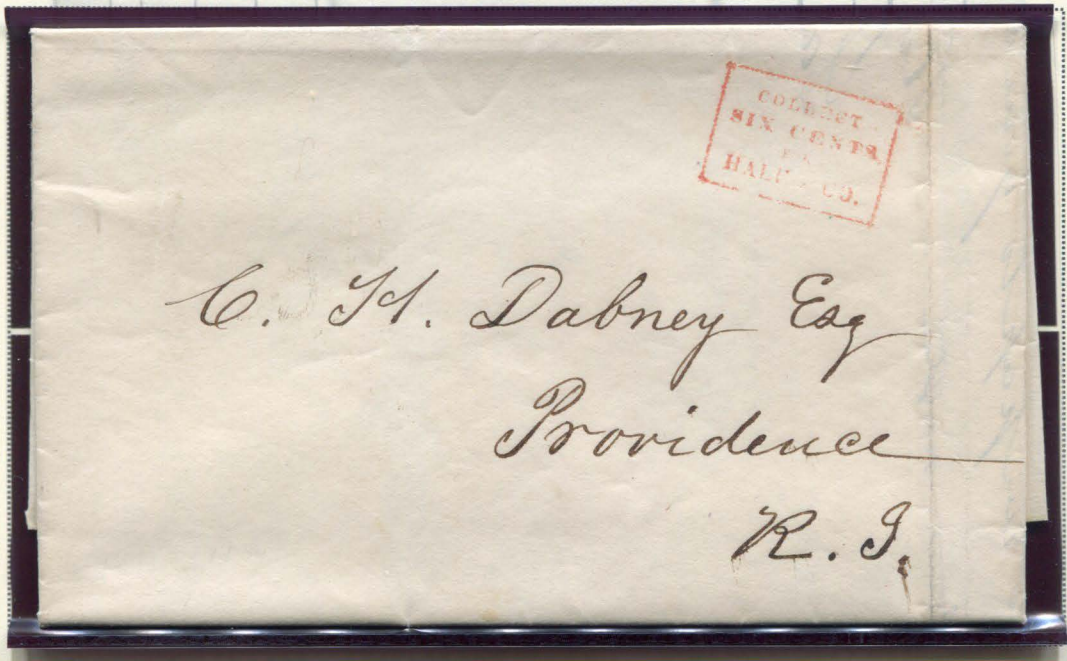
RED HALE & CO. COLLECT HANDSTAMP : C-2
 MANUSCRIPT HALE & CO. FORWARDING NOTATION
 DOCKETED AUGUST 29, 1844
 -REDUCED PHOTOCOPY OF LETTER-

HALE & COMPANY

This cover was mailed from the Hale & Co. office in New York to the office in Providence, Rhode Island. The cover is addressed to C.H. Dabney, who ran a store in Providence, and contains a bill of sales.

Sales by order & for acct of Blackstone Manf Co.

1845							
Jan	20	8 ⁰⁰	428	1	Case 1/2 B.C.	1588	9 ⁰⁰ 151 03
	22	"	129	1	"	1538	" 139 91
Feb	25	"	359	1	"	Sample 1426	9 ⁰⁰ 133 59
	26	"	430	1	"	1424	9 ⁰⁰ 140 98
	27	"	431	1	"	1479	" 140 51
						1845	
						Carriage 137	Fin Insurance 75
						Com. & Disc	57
							3 12
							35 80
							37 92



RED HALE & CO. COLLECT HANDSTAMP : C-3
 DOCKETED FEBRUARY 28, 1845
 -REDUCED PHOTOCOPY OF LETTER-

FANCY HANKERCHIEFS.—An elegant assortment of fancy Handkerchiefs, received at **CHARLES H. DABNEY'S, No. 16, Arcade.** m 24

ADVERTISEMENT FROM THE *MICROCOSM*
 PROVIDENCE, RHODE ISLAND - APRIL 2, 1831

HALE & COMPANY

This cover was mailed from the Hale & Co. office in New York to the office in Boston. This letter was mailed with a red "6¼" handstamp, indicating the cost of delivery without prepayment. The letter is addressed to Burnham, Baldwin & Wetton, a copper rolling mill.



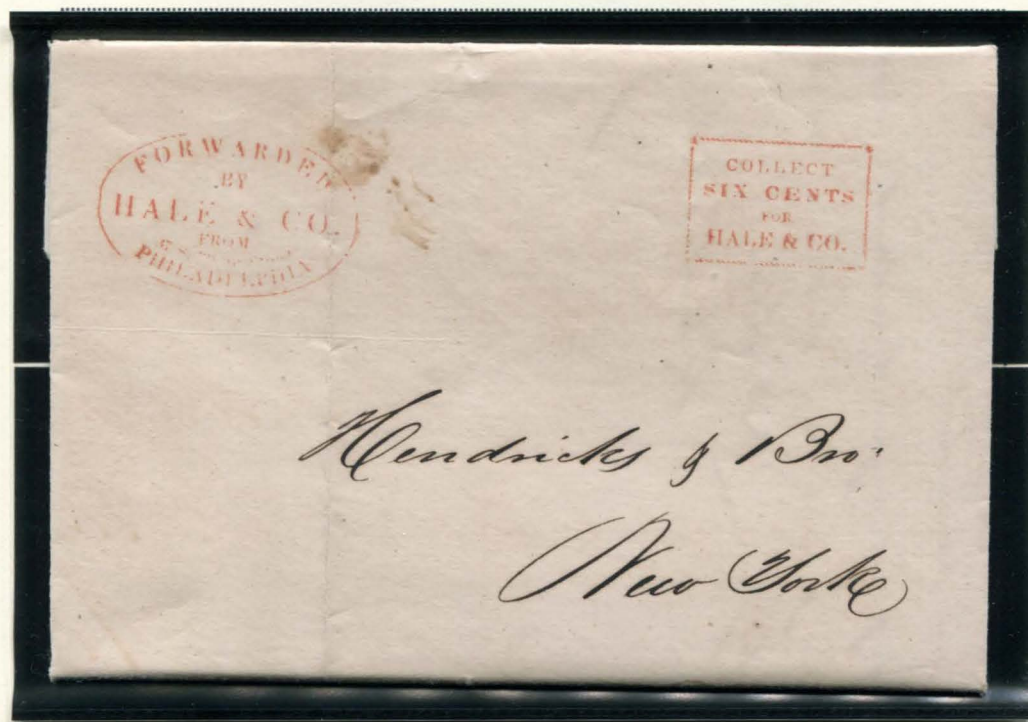
RED HALE & CO. (NEW YORK) "6¼" COLLECT HANDSTAMP : C-14
DOCKETED 1844

HALE & COMPANY

During Hale & Co.'s business, Philadelphia was the second largest city in the United States and was a key transportation hub serviced by steamboats on the Delaware River and by multiple railroad companies. Hale & Co. mentioned service to Philadelphia in their advertisements and the Hale & Co. office was listed at 37 Third Street in Philadelphia.

No agent name was listed for Philadelphia, although directory listings at the time list five different names at the office address: Joshua Isaacs, an exchange broker; Richard Lawrence, a book black; William Wallace, a coal merchant; Henry W. Prescott, an "agent" (1845); and Josh Sturdivant.

Three handstamps are known originating from the Philadelphia office, although other handstamps may have been used as well. The cover featured here includes clear strikes of two of the three known types.



RED HALE & CO. (PHILADELPHIA) FORWARDING HANDSTAMP : F-33
RED HALE & CO. COLLECT HANDSTAMP : C-3
DOCKETED SEPTEMBER 27, 1844

HALE & COMPANY

The following cover was handstamped at Hale & Co.'s New York office with a red forwarding handstamp. The cover is addressed to Providence, Rhode Island.



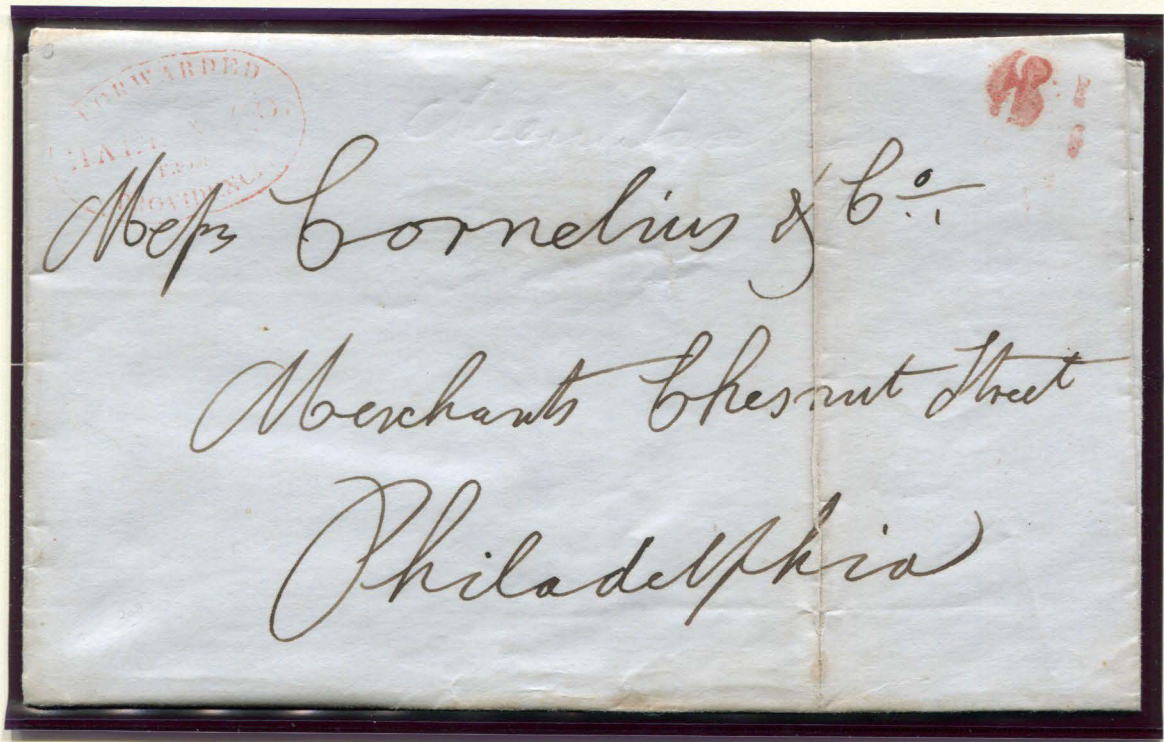
RED HALE & CO. (NEW YORK) FORWARDING HANDSTAMP : F-29
RED HALE & CO. PAID HANDSTAMP : P-8
DOCKETED JUNE 1, 1845

The red "PAID" handstamp on this cover was recorded used in Hale & Co.'s New York, Providence and Philadelphia offices. It is impossible to determine if this letter was marked prepaid in New York or marked paid when it was picked up in Rhode Island.

HALE & COMPANY

The cover featured here was forwarded from the Providence, Rhode Island office to Philadelphia, Pennsylvania. The only Hale & Co. office in Rhode Island was located in Providence, which provided delivery to other Rhode Island towns and also offered a local penny post for within the city. The agent for Providence was M. Church.

The Providence office used several handstamps, including the addressed forwarding oval featured on this cover. At least three different numeral handstamps were also used. The "6¼" handstamp on this cover is only recorded as originating in New York, but it was likely used in Providence as well.

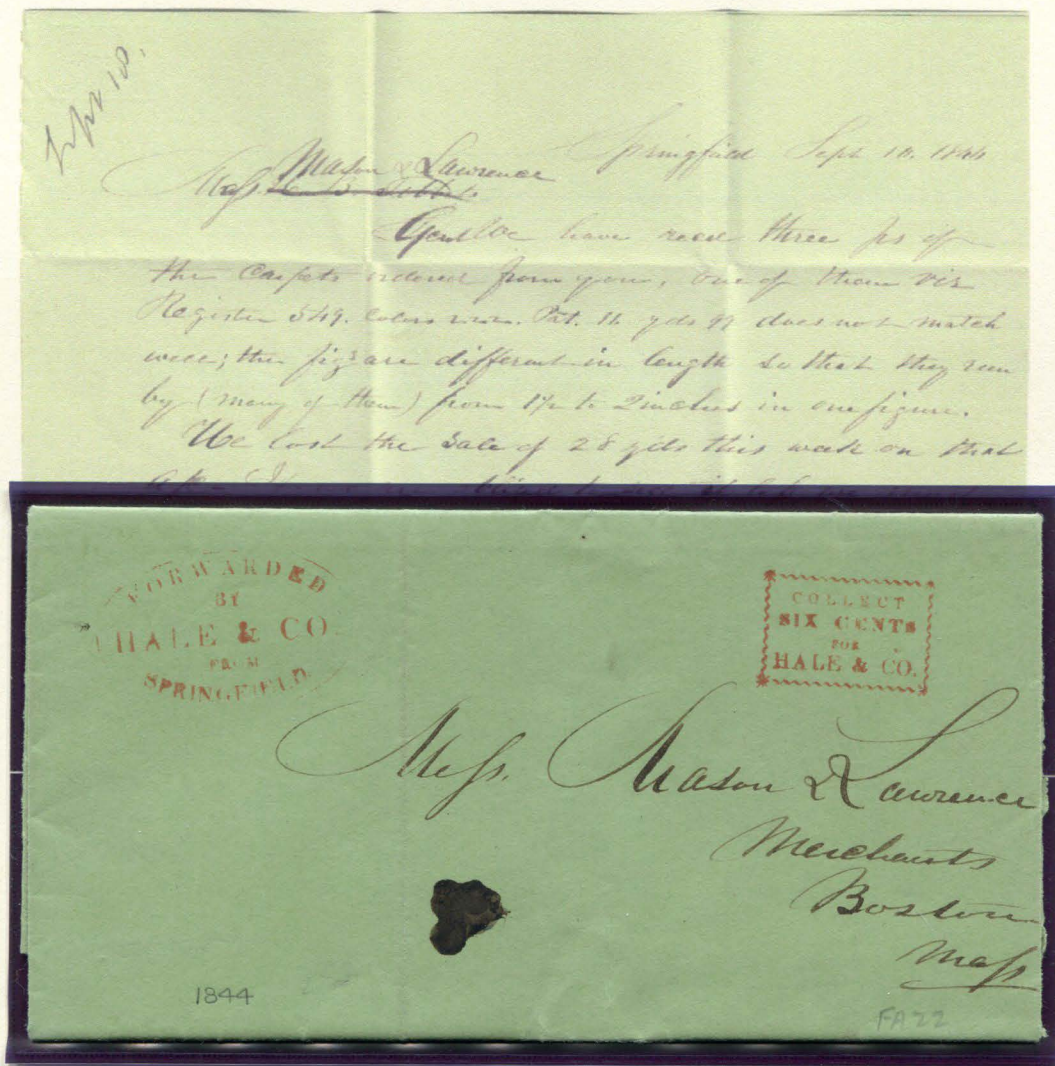


RED HALE & CO. (PROVIDENCE) FORWARDING HANDSTAMP : F-36
RED HALE & CO. "6¼" HANDSTAMP : C-14
DOCKETED JULY 11, 1844

HALE & COMPANY

The Springfield, Connecticut office of Hale & Co. was operated by William Bishop. The city of Springfield was located near the Western Railroad and the Hartford & New Haven Railroad, and also had access to many steamship services along the Connecticut River.

Only two handstamps are known to have originated from this office, including the addressed forwarding handstamp featured on the cover below. Handstamps from this office were applied in either red or green ink.



RED HALE & CO. (SPRINGFIELD) FORWARDING HANDSTAMP : F-38
RED HALE & CO. COLLECT HANDSTAMP : C-1
DOCKETED SEPTEMBER 16, 1844
-REDUCED PHOTOCOPY OF LETTER-

HALE & COMPANY



7511 : 6¢ LIGHT BLUE
 CANCELLED WITH RED HALE & CO.
 6¼ HANDSTAMP : C-14
 DOCKETED JUNE 8, 1844

The cover above was mailed to Richard H. Dana Jr., a lawyer in Boston. The stamp is cancelled with a red "6¼" handstamp, commonly used at the New York office.

The cover below was mailed from the office in Providence, Rhode Island. The stamp is marked with a manuscript "N" - this control mark is known used from the Providence office and may have acted as a precancel.



7511 : 6¢ LIGHT BLUE
 MANUSCRIPT "N"
 RED HALE & CO. (PROVIDENCE)
 FORWARDING HANDSTAMP : F-36
 DOCKETED OCTOBER 8, 1844

HALE & COMPANY

The cover below was mailed from New York City to Boston, Massachusetts in 1844. The stamp used was modified by the New York office with a manuscript overprint deleting the address in the center. There are eighteen covers recorded with stamps overprinted in this manner - fourteen of these covers originated in New York.



75L1 : 6¢ LIGHT BLUE
ADDRESS DELETED BY MANUSCRIPT - GUTMAN TYPE C
DOCKETED JULY 19, 1844

The cover is addressed to C.B. Fessenden, who ran a shipping business in Boston.

HALE & COMPANY

Featured here is a conjunctive use cover delivered by Hale & Co. in partnership with Jerome & Co.'s Express. Jerome & Co. Express was initiated in 1843 with a route from Bangor, Maine to Portland and then down to Boston, Massachusetts. Jerome & Co. had connections with Adams & Co. and Harden & Co., as well as Hale & Co.

The letter was mailed from New York and carried by Hale & Co. up to Boston. From there, it was carried to Bangor by Jerome & Co.



75L1 : 6c LIGHT BLUE
ADDRESS DELETED BY MANUSCRIPT - GUTMAN TYPE C
RED HALE & CO. (NEW YORK FORWARDING HANDSTAMP : F-28
RED "COLLECT SIX CENTS FOR HALE & CO." HANDSTAMP : C-2
BLACK JEROME & CO.'S EXPRESS HANDSTAMP : JER HS-01
DOCKETED SEPTEMBER 9, 1844

The letter was prepaid with a Hale & Co. stamp featuring a manuscript deletion of the address. Jerome & Co. accepted Hale & Co. stamps as payment, never marking any known covers with additional collect markings for personal payment of conjunctive deliveries.

HALE & COMPANY

The cover below is part of a two page newsletter mailed from Boston to New York. The newsletter, titled "The Rover" and numbered "Vol. 1, No. 7", was handwritten by several different people, each sharing news, stories, gossip, or poems. The newsletter was likely written by a circle of educated teenagers in Boston. This is the first of two Rover newsletters known - both examples were mailed to Emma Smallwood, who supposedly would have passed the news around to her circle in New York.

This newsletter in particular is notable for the illustration at the top of the first page, which depicts a puppy in a basket of letters. One of the illustrated letters in the basket is the very cover in which the newsletter was mailed - addressed to Emma Smallwood and paid with a Hale & Co. stamp. According to Gordon Stimmell in his October 1997 Penny Post article, this represents the earliest known artistic illustration of a local post stamp.



75L5 : 6¢ LIGHT BLUE
GENUINE ON COVER
RED HALE & CO. (BOSTON) FORWARDING HANDSTAMP : F-15
CIRCA SUMMER, 1844
-CONTENTS ON FOLLOWING PAGE-



Vol. 1.

No. 7

Much Bustle about Nothing
 We learn from a gentleman of unquestionable
 veracity that Eleven ^{beautiful} young ladies accom-
 -panied by one young gentleman
 entered a furniture ware house
 in our vicinity last evening, and
 so worked upon the feelings of
 a young man there that he
 made each of them a present
 of a half a pound of curled hair
 for what purpose —
 We are not surprised for who
 could resist Eleven pairs of
 beautiful eyes - (not we surely)

The Enterpian Vocalists gave a cap-
 ital concert at the Nonantum
 last Friday evening. W.D.E. was
 there looking as nice as usual.
 I shant say who paid for Caroline G's
 ticket because I dont know, but
 I do know ~~she~~ ^{he} sat beside her.
 ~ ~ ~ ~ ~
 Father & Mother started this morning
 for Saratoga to be gone a week or
 two. I am house-keeper & Charles and
 Edwin are appointed guardians over
 the girls.



On Friday evening last we undertage
 that the Hon Wm Jackson's family gave
 a splendid Blueberry Soiree which was attended
 by a number of distinguished gentlemen.

Rev. M. Gilbert preached to a
 large & hot audience last
 Sabbath evening.

HALE & COMPANY

This cover was mailed from Boston to New York in 1844. The letter was sent with two stamps, probably to pay the rate for a double weight letter. The message within the cover indicates that a second letter was enclosed within, which would have increased its weight.

Three red Boston office forwarding handstamp mark the cover, two of which cancel the affixed stamps. The notation "please send to Hale & Co." is written in faint blue pencil at the bottom left, and "Paid 6" is written in gray, partially erased.

7 Boston Dec 23 1844
Mr S. W. Lewis
Dear Sir
Will you please send the enclosed letter to Mess Castel No, Aux Cayes by first vessel, it having been left by a vessel sailing from this port. We see you have a vessel up for that port to sail soon.
Yours Truly
Brown Rich

Boston Dec 23 1844

Mr. S. W. Lewis

Dear Sir

Will you please send the enclosed letter to Mess Castel & Co., Aux Cayes, by first vessel, it having been left by a vessel sailing from this port. We see you have a vessel up for that port to sail soon.

Yours Truly

Brown Rich



HALE & COMPANY

The covers featured here were both mailed from Boston to New York. Both are cancelled with a square "Forwarded through/ Hale & Co.'s/ Letter Office" handstamp - the first in red; the second in black and with a larger "Forwarded by Hale & Co. from Boston" oval handstamp.



75L5 : 6¢ BLUE
 RED RECTANGULAR HALE & CO. (BOSTON)
 FORWARDING HANDSTAMP : F-15
 DOCKETED JULY 23, 1844



75L5 : 6¢ BLUE
 BLACK OVAL HALE & CO. (BOSTON)
 FORWARDING HANDSTAMP : F-3
 BLACK RECTANGULAR HALE & CO. (BOSTON)
 FORWARDING HANDSTAMP : F-15

HALE & COMPANY

The cover featured here was mailed from the Hale & Co. office in Salem to Boston, Massachusetts. The agent for Salem was Silvester Phelps. Stamps originating from this office, such as the one of this cover, were often marked with an "S" control mark in black or magenta. A census of these covers shows that the "s" was written in two different styles of handwriting, indicating that multiple people probably participated in applying the control marks at this office.



75L5 : 6c BLUE
MAGENTA "S" MANUSCRIPT CONTROL MARK
RED HALE & CO. (BOSTON) FORWARDING HANDSTAMP : F-15
DOCKETED JUNE 29, 1844
PF CERT #0365922

This cover is marked on the front with "paid" in manuscript. In pencil, a second notation reads "Hale & Co. / 23 State St. / Mail for Salem closes at 1/2 pm".

The stamp is cancelled with a red Hale & Co. forwarding handstamp from the Boston office.

HALE & COMPANY

The cover featured here was mailed from Northampton to Boston, Massachusetts. The Hale & Co. agent for Northampton was A.W. Thayer, who applied a manuscript "T" control mark on many of his stamps.

The stamp on this cover was first marked with a magenta "T" and then a black manuscript "C" was applied over it. Eighteen Hale & Co. letters are recorded from Northampton with this "TC" marking. It is unknown what the "C" mark stood for, it could have been a note to deliver the letter via the "Connecticut River"; or simple meant as a "cancel" for the stamp.



75L5 : 6c BLUE
MAGENTA "T" MANUSCRIPT CONTROL MARK
BLACK "C" MANUSCRIPT CANCEL
RED HALE & CO. (NORTHAMPTON) FORWARDING HANDSTAMP : F-32
DOCKETED AUGUST 27, 1844

The sender of this letter, W.A. Hawley, included a postscript encouraging the recipient to send his reply via Hale & Co.'s service.

*P. S. All letters to me, you will please
to commit to the care of Hale & Co's In-
dependent Mail, as this will save half
the postage*

HALE & COMPANY

The cover below was mailed from Hale & Co.'s Worcester, Massachusetts office. This office was known to apply manuscript "W" control marks on their stamps, as featured on this cover. This cover includes a red Worcester forwarding handstamp and the manuscript notation "paid".



75L5 : 6¢ BLUE
BLACK "W" MANUSCRIPT CONTROL MARK
RED HALE & CO. (WORCESTER) FORWARDING HANDSTAMP : F-43
DOCKETED APRIL 9, 1845

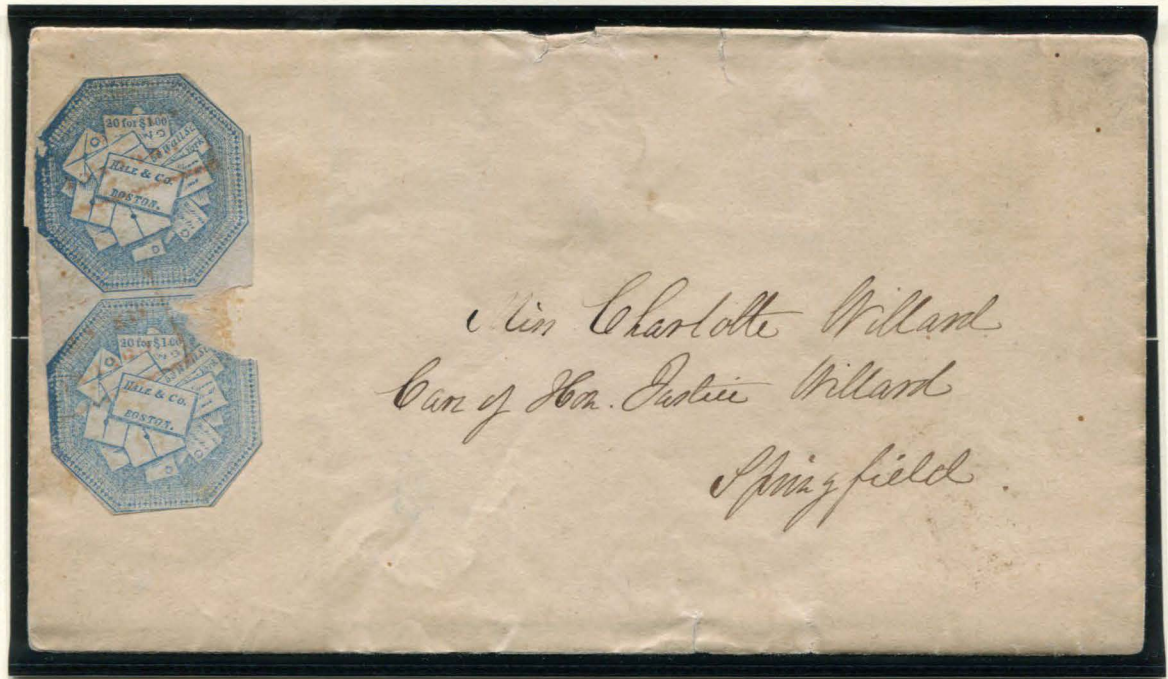
Although the stamp on this cover is not cancelled, the "paid" notation implies that it was used to pay the delivery rate at Northampton. This "paid" notation is in the same hand as the notation on a cover from Worcester illustrated on page 225 of Gutman's *Hale & Co. Independent Mail Co. 1843-1845* (figure 223).

This letter was sent by Justice William N. Green to Robert Manning, a nurseyman in Salem, Massachusetts. The letter discusses seeds and the identifying and planting of trees.

HALE & COMPANY

The following cover is part of the outer cover of a letter. The cover was mailed with a vertical pair of Hale & Co. stamps - each is cancelled with a red "Collect Six Cents" handstamp known used from the Boston office.

The top stamp of this pair is from the first position of the 75L5 sheet of stamps - it is easily identified by the missing piece on the left side of the design.



75L5 : 6¢ BLUE - VERTICAL PAIR
RED HALE & CO. (BOSTON) HANDSTAMP : C-6 (x2)

This cover is addressed to Charlotte Willard, the daughter of Justice Willard. Justice Willard was a lawyer, newspaper publisher, and state senator.

HALE & COMPANY

The cover featured here is one of only four Hale & Co. letters known originating from Andover, Massachusetts. Hale did not advertise an office in Andover, although he did offer service there. The few letters from Andover are known with either manuscript or Boston handstamp cancels. Although the red handstamp cancel on this cover is very faint, it was most likely a Boston collect handstamp (maybe C-9).

A manuscript notation on the front reads "Immediate". The letter is addressed to New York, and requests a lists of the ships leaving to Liverpool in early February.



75L5 : 6¢ BLUE
PARTIAL RED HANDSTAMP CANCEL
DOCKETED JANUARY 27, 1845
-REDUCED PHOTOCOPY OF LETTER-

HALE & COMPANY

The Hale & Co. cover represented here is a conjunctive usage with H.T. Crofoot's Letter Office in Newburyport, Massachusetts. Crofoot was the Newburyport agent for Hale & Co., and also operated his own local post. The letter was prepaid with a Hale & Co. stamp, marked with Crofoot's manuscript "C" control mark. It is also marked with both Crofoot's Letter Office handstamp and with Hale & Co's "Great Eastern Mail" handstamp for conjunctive usages.

The cover was turned and mailed again. On its second trip, the letter was mailed from the Hale & Co.'s Worcester office to New York City. At the New York office, the cover was handstamped with a red "Collect Six Cents for Hale & Co." box.

The original letter and additional information is featured in the H.T. Crofoot Letter Office section of the Mike Farrell Collection of Independent Mails.



OUTER COVER:
75L5 : 6¢ BLUE - WITH "C" MANUSCRIPT
RED H.T. CROFOOT LETTER OFFICE HANDSTAMP
BROWN HALE & CO. FORWARDING HANDSTAMP : F-41
DOCKETED OCTOBER 16, 1844

INNER COVER:
RED HALE & CO. FORWARDING HANDSTAMP : C-2
DOCKETED OCTOBER 18, 1844

HALE & COMPANY

Featured here is a conjunctive use cover delivered by Hale & Co. in partnership with Jerome & Co.'s Express.

The letter was mailed from Frankfort, Maine and carried to Boston via Jerome & Co. The Hale & Co. agent at Frankfort, J. Hersey Jr., was also listed in advertisements as the agent for Jerome & Co. This cover was marked with both Jerome & Co.'s Express handstamp and with the Hale & Co.'s "Great Eastern Mail" handstamp used by conjunctive mail partner offices.



75L5 : 6¢ BLUE
PRECANCEL - MANUSCRIPT CROSSED LINES
RED HALE & CO. FORWARDING HANDSTAMP : F-41
BLACK JEROME & CO.'S EXPRESS HANDSTAMP : JER HS-01
DOCKETED AUGUST 14, 1844

A manuscript notation on the cover reads "(paid) 6". In addition to this notation, a precancelled Hale & Co. stamp was affixed to the cover. In Boston, the letter was turned over to Hale & Co. for delivery to New York city.

The cover was mailed by the merchant Lathley Rich, and is addressed to Buck & Peters, a shipping company. The letter within discusses an order for flour and corn to be delivered to Frankfort.

HALE & COMPANY

George Hussey produced forgeries of the Hale & Co. adhesive stamps of both types (with and without address). These forgeries are known as "Forgery A". Hussey primarily produced forgeries in shades of the issued blue and red colors; although his forgeries are also known printed with black ink or on colored papers.



FORGERY A
TYPE I
HUSSEY
6¢ BLUE (SHADE)
ON WHITE
(75L1)



FORGERY A
TYPE I
HUSSEY
6¢ BLUE (SHADE)
ON WHITE
(75L1)



FORGERY A
TYPE I
HUSSEY
6¢ BLUE (SHADE)
ON WHITE
(75L1)



FORGERY A
TYPE I
HUSSEY
6¢ BLUE (SHADE)
ON WHITE
(75L1)



FORGERY A
TYPE I
HUSSEY
6¢ BLUE (SHADE)
ON WHITE
(75L1)



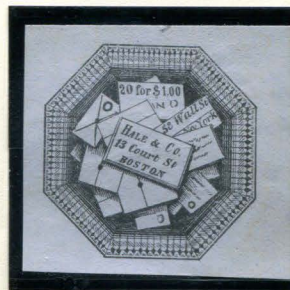
FORGERY A
TYPE I
HUSSEY
6¢ BLUE GREEN (SHADE)
ON WHITE
(75L1)



FORGERY A
TYPE I
HUSSEY
6¢ BLUE GREEN (SHADE)
ON WHITE
(75L1)



FORGERY A
TYPE I
HUSSEY
6¢ BLACK
ON WHITE
(75L1)



FORGERY A
TYPE I
HUSSEY
6¢ BLACK
ON PALE BLUISH GRAY
(75L1)

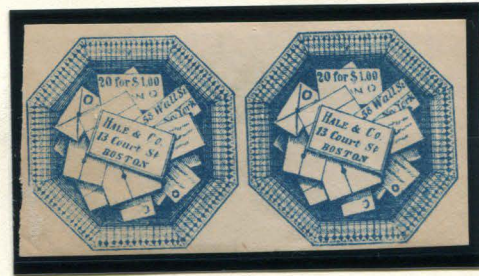


FORGERY A
TYPE I
HUSSEY
6¢ GRAY
ON WHITE
(75L1)

HALE & COMPANY



FORGERY A
TYPE I
HUSSEY
6¢ BLUE (SHADE)
ON WHITE
(75L1)
PURPLE STAR CANCEL



FORGERY A
TYPE I
HUSSEY
6¢ BLUE (SHADE)
ON WHITE
(75L1)
HORIZONTAL PAIR



FORGERY A
TYPE I
HUSSEY
6¢ RED(SHADE)
ON WHITE
(75L2)



FORGERY A
TYPE I
HUSSEY
6¢ RED(SHADE)
ON WHITE
(75L2)



FORGERY A
TYPE I
HUSSEY
6¢ RED(SHADE)
ON WHITE
(75L2)



FORGERY A
TYPE I
HUSSEY
6¢ RED(SHADE)
ON WHITE
(75L2)



FORGERY A
TYPE I
HUSSEY
6¢ RED(SHADE)
ON WHITE
(75L2)
MS "X" CANCEL

HALE & COMPANY



FORGERY A
TYPE I
HUSSEY
6¢ RED(SHADE)
ON WHITE
(75L2)
BLOCK OF FOUR



FORGERY A
TYPE I
HUSSEY
6¢ RED(SHADE)
ON WHITE H LAID
(75L2)
BLOCK OF SIX

HALE & COMPANY



FORGERY A VAR
TYPE I
PARTIALLY ERASED
ADDRESS
HUSSEY
6¢ BLUE (SHADE)
ON WHITE
(75L1)

The Hussey forgery above is an unlisted variation, representing a die in-between Type I and Type II designs. The address is only partially removed, with the numeral 1 and period of "13 Court St." still visible.



FORGERY A
TYPE II
HUSSEY
6¢ BLUE (SHADE)
ON WHITE
(75L5)



FORGERY A
TYPE II
HUSSEY
6¢ BLUE (SHADE)
ON WHITE
(75L5)



FORGERY A
TYPE II
HUSSEY
6¢ BLUE (SHADE)
ON WHITE
(75L5)



FORGERY A
TYPE II
HUSSEY
6¢ BLUE (SHADE)
ON WHITE
(75L5)



FORGERY A
TYPE II
HUSSEY
6¢ BLUE (SHADE)
ON WHITE
(75L5)

HALE & COMPANY



FORGERY A
TYPE II
HUSSEY
6¢ BLUE (SHADE)
ON WHITE
(75L5)
HORIZONTAL PAIR

Although the genuine address omitted Hale & Co. stamps were only issued in blue, Hussey also produced Type II forgeries in the Type I red color.



FORGERY A
TYPE II
HUSSEY
6¢ RED (SHADE)
ON WHITE
(75L5)



FORGERY A
TYPE II
HUSSEY
6¢ RED (SHADE)
ON WHITE
(75L5)



FORGERY A
TYPE II
HUSSEY
6¢ RED (SHADE)
ON WHITE
(75L5)



FORGERY A
TYPE II
HUSSEY
6¢ RED (SHADE)
ON WHITE
(75L5)
PURPLE STAR CANCEL

HALE & COMPANY



FORGERY A
TYPE II
HUSSEY
6¢ RED (SHADE)
ON WHITE
(75L5)
VERTICAL STRIP
OF THREE (x2)



FORGERY A
TYPE II
HUSSEY
6¢ RED (SHADE)
ON WHITE
(75L5)
BLOCK OF FOUR

HALE & COMPANY

J. Scott printed facsimile illustrations of the Hale & Co. adhesive stamps on the pages of the stamp collecting albums he published. He also produced forgeries of the stamps for sale to collectors. Stamp forgeries are known as "Forgery B".



FORGERY B
TYPE I
SCOTT
6¢ BLACK
ALBUM PAGE CUT
ILLUSTRATION
(75L1)



FORGERY B
TYPE I
SCOTT
6¢ BLACK
ON WHITE
(75L1)



FORGERY B
TYPE I
SCOTT
6¢ BLUE (SHADE)
ON WHITE
(75L1)



FORGERY B
TYPE I
SCOTT
6¢ BLUE (SHADE)
ON WHITE
(75L1)



FORGERY B
TYPE I
SCOTT
6¢ BLUE (SHADE)
ON WHITE
(75L1)



FORGERY B
TYPE I
SCOTT
6¢ RED (SHADE)
ON WHITE
(75L2)



FORGERY B
TYPE I
SCOTT
6¢ RED (SHADE)
ON WHITE
(75L2)



FORGERY B
TYPE I
SCOTT
6¢ RED (SHADE)
ON WHITE
(75L2)

HALE & COMPANY



FORGERY B
TYPE II
SCOTT
6¢ BLACK
ALBUM PAGE CUT
ILLUSTRATION
(75L5)



FORGERY B
TYPE II
SCOTT
6¢ BLUE (SHADE)
ON WHITE
(75L5)

HALE & COMPANY

S. Allan Taylor only produced forgeries of the Hale & Co. stamps with address removed. These forgeries are known as "Forgery C", and were printed in a wide variety of colors.



FORGERY C
TYPE II
TAYLOR - FORM 5
6¢ RED
ON WHITE
(75L5)



FORGERY C
TYPE II
TAYLOR - FORM 5
6¢ RED
ON YELLOW SC
(75L5)



FORGERY C
TYPE II
TAYLOR - FORM 5
6¢ RED
ON GRAY VIOLET SC
(75L5)



FORGERY C
TYPE II
TAYLOR - FORM 6
6¢ BLUE
ON WHITE
(75L5)



FORGERY C
TYPE II
TAYLOR - FORM 6
6¢ BLUE
ON BLUE
(75L5)



FORGERY C
TYPE II
TAYLOR - FORM 6
6¢ BLUE
ON PINK
(75L5)



FORGERY C
TYPE II
TAYLOR - FORM 11
6¢ BLUE
ON WHITE
(75L5)



FORGERY C
TYPE II
TAYLOR - FORM 11
6¢ BLUE
ON PINK V. LAID
(75L5)

HALE & COMPANY



FORGERY C
TYPE II
TAYLOR - FORM 18
6¢ BLACKISH BROWN
ON WHITE
(75L5)



FORGERY C
TYPE II
TAYLOR - FORM 18
6¢ ORANGE
ON WHITE
(75L5)



FORGERY C
TYPE II
TAYLOR - FORM 18
6¢ BLACK
ON GRAY GREEN
(75L5)



FORGERY C
TYPE II
TAYLOR - FORM 18
6¢ BLACK
ON VIOLET BLUE
(75L5)



FORGERY C
TYPE II
TAYLOR - FORM AA12
6¢ PURPLE BROWN
ON WHITE
(75L5)



FORGERY C
TYPE II
TAYLOR - FORM AA12
6¢ RED
ON WHITE
(75L5)



FORGERY C
TYPE II
TAYLOR
6¢ DEEP VIOLET RED
ON WHITE
(75L5)



FORGERY C
TYPE II
TAYLOR
6¢ VIOLET RED
ON WHITE
(75L5)



FORGERY C
TYPE II
TAYLOR
6¢ DULL VIOLET RED
ON WHITE
(75L5)

HALE & COMPANY



FORGERY C
TYPE II
TAYLOR
6¢ ORANGE
ON WHITE
(75L5)



FORGERY C
TYPE II
TAYLOR
6¢ BRIGHT RED
ON WHITE
(75L5)



FORGERY C
TYPE II
TAYLOR
6¢ RED
ON WHITE
(75L5)



FORGERY C
TYPE II
TAYLOR
6¢ PINK
ON WHITE
(75L5)



FORGERY C
TYPE II
TAYLOR
6¢ LIGHT BLUE
ON WHITE
(75L5)



FORGERY C
TYPE II
TAYLOR
6¢ LIGHT BLUE
ON CREAM
(75L5)



FORGERY C
TYPE II
TAYLOR
6¢ DULL BLUE
ON WHITE
(75L5)



FORGERY C
TYPE II
TAYLOR
6¢ DARK BLUE
ON WHITE H. LAID
(75L5)

HALE & COMPANY

J.B. Moens created facsimiles and forgeries of both types of Hale & Co. stamps. These forgeries are known as "Forgery H".

Other forgers copied Moens work, producing additional forgeries known as "Forgery I". These forgeries use the same design and are difficult to distinguish from the "original" forgeries.



**FORGERY H/I
TYPE I
MOENS
6c GOLD
ON WHITE
(75L1)**



**FORGERY H/I
TYPE I
MOENS
6c GOLD
ON BLACK SC
(75L1)**



**FORGERY H/I
TYPE I
MOENS
6c GOLD
ON GREEN
(75L1)**



**FORGERY H
TYPE II
MOENS
6c ORANGISH RED
ON WHITE
(75L5)**



**FORGERY H
TYPE II
MOENS
6c RED
ON WHITE
(75L5)**



**FORGERY H
TYPE II
MOENS
6c BLUE
ON WHITE
(75L5)**

HALE & COMPANY

The following Hale & Co. forgeries were produced by unknown forgers.



FORGERY E
TYPE I
6¢ RED (SHADE)
ON WHITE
(75L1)



FORGERY E
TYPE I
6¢ RED (SHADE)
ON WHITE
(75L1)



FORGERY E
TYPE I
6¢ ORANGE
ON WHITE
(75L1)



FORGERY E
TYPE I
6¢ BLUE GREEN
ON WHITE
(75L1)



FORGERY E
TYPE I
6¢ BLUE
ON WHITE
(75L1)



FORGERY E
TYPE I
6¢ DARK BLUE
ON WHITE
(75L1)



FORGERY E
TYPE II
6¢ RED
ON WHITE
(75L5)



FORGERY E
TYPE II
6¢ ORANGE
ON WHITE
(75L5)



FORGERY E
TYPE II
6¢ BLUE
ON WHITE
(75L5)

HALE & COMPANY



FORGERY F
TYPE I
6¢ BLUE
ON WHITE
(75L1)



FORGERY F
TYPE I
6¢ RED
ON WHITE
(75L2)



FORGERY F
TYPE I
6¢ GREEN (SHADE)
ON WHITE
(75L1)



FORGERY F
TYPE I
6¢ GREEN (SHADE)
ON WHITE
(75L1)



FORGERY F
TYPE II
6¢ BLUE
ON WHITE
(75L5)



FORGERY F
TYPE II
6¢ RED
ON WHITE
(75L5)



FORGERY F
TYPE II
6¢ GREEN
ON WHITE
(75L5)



FORGERY F
TYPE II
6¢ BLUE
ON BUFF
(75L5)



FORGERY F
TYPE II
6¢ ORANGE
ON BUFF
(75L5)



FORGERY F
TYPE II
6¢ RED
ON BUFF
(75L5)

HALE & COMPANY



FORGERY G
TYPE I
6¢ BLUE (SHADE)
ON WHITE
(75L1)



FORGERY G
TYPE I
6¢ BLUE (SHADE)
ON WHITE
(75L1)



FORGERY G
TYPE I
6¢ BROWN
ON WHITE
(75L1)



FORGERY G
TYPE I
6¢ ORANGE
ON WHITE
(75L1)