

Fellowship Faculty

Mirna B. Podoll, MD

Surgical Pathology Fellowship Director

Mitra Mehrad, MD

Surgical Pathology Associate Fellowship Director

Alice Coogan, MD

Chair and Professor, Pathology, Microbiology and Immunology

Executive Medical Director of Anatomic Pathology

Hernán Correa, MD

Rosana Eisenberg, MD

Kim Ely, MD

Cytopathology Fellowship Director

Giovanna Giannico, MD

Genitourinary Pathology Fellowship Director

Jennifer Gordetsky, MD

Brannan B. Griffin, MD

Robert D. Hoffman, MD, PhD

Florencia Jalikis, MD

Joyce E. Johnson, MD

James S. Lewis Jr, MD

Jiancong Liang, MD, PhD

Krutika Patel, MD

Leonel Maldonado, MD

Carlos Prieto-Granada MD

Safia Salaria, MD

Gastrointestinal Pathology Fellowship Director

Melinda E. Sanders, MD

Daniel Shepherd, MD, PhD

Johanna Savage, MD

Reena Singh, MD

Eszter Szentirmai, MD

Huiying Wang, MD

Pediatric Pathology Fellowship Director

Mary Kay Washington, MD, PhD

Aida Valencia-Guerrero, MD

Yaohong Wang, MD, PhD

Vivian Weiss, MD, PhD

Annika L. Windon, MD

Interested applicants should submit a cover letter, application*, CV, personal statement, USMLE scores, passport size photo, three letters of recommendation, and ECFMG certificate (if applicable) to:

Vanderbilt University Medical Center
Graduate Education Office
Attn: Surgical Pathology
Fellowship
CC-3322 MCN, 1161 21st Ave South
Nashville, TN 37232-2561

pathfellow@vumc.org

*Application and pertinent information can be found under Graduate Medical Education at:

<https://www.vumc.org/gme/13198>

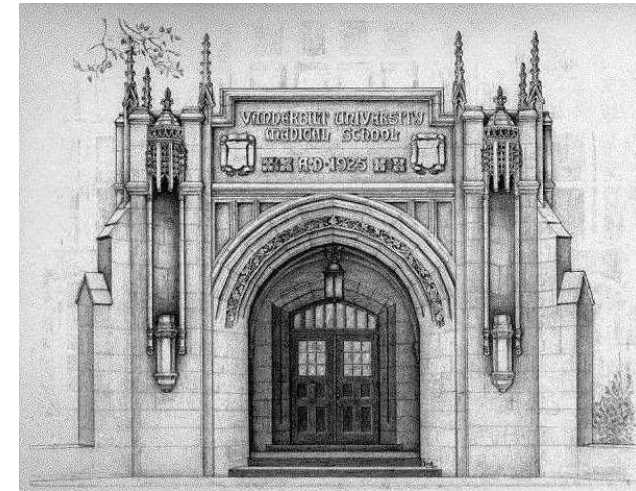
VANDERBILT UNIVERSITY  School of Medicine



Vanderbilt University Medical Center
Pathology, Microbiology and Immunology
Graduate Education Office
Attn: Surgical Pathology Fellowship
1161 21st Ave South
CC-3322 MCN
Nashville, TN 37232-2561

(615) 343-4882 x2
path.fellow@vumc.org

VANDERBILT  UNIVERSITY
MEDICAL CENTER



*Vanderbilt
University
Medical
Center
Surgical
Pathology
Fellowship*

Surgical Pathology at Vanderbilt University Medical Center

The Department of Pathology, Microbiology and Immunology at Vanderbilt University Medical Center, Nashville, Tennessee, offers a one year fellowship in Surgical Pathology. The program provides a strong curriculum that covers multiple surgical pathology subspecialty areas including strong training in general frozen section and intraoperative consultations. Elective time is available and clinical and translational research opportunities abound.

The fellows will interact with 25 faculty members in the Division of Anatomic Pathology as well as those in separate divisions of cytopathology, renal pathology, hematopathology, and neuropathology. Vanderbilt Medical Center accesses more than 45,000 surgical pathology cases and 20,000 cytologies (mainly non-gynecologic cytopathology) per year. Subspecialty expertise in anatomic pathology includes breast pathology, gynecologic pathology, genitourinary pathology, pulmonary/thoracic pathology, head and neck pathology, endocrine pathology, cardiac pathology, bone and soft tissue pathology, gastrointestinal/liver/pancreas pathology, pediatric pathology, hematopathology, neuropathology and renal pathology.

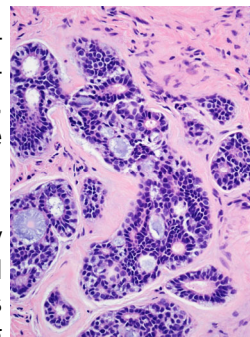
Five fellows are appointed each year who primarily rotate on frozen section

coverage and the different subspecialty areas in surgical pathology. The program also has the option to incorporate elective weeks of advanced training in cytopathology, as well as more in depth elective training time devoted to one or more subspecialty areas in anatomic pathology. Among other duties, fellows perform independent interpretation of intraoperative consultations and are actively involved in resident education and supervision.



The Surgical Pathology fellows are part of a growing departmental graduate medical education community that includes approximately 25 residents, as well as fellows in Cytopathology, Pediatric Pathology, GI Pathology, GU Pathology, Renal Pathology, Hematopathology, Neuropathology, Molecular Genetic Pathology, Microbiology, Transfusion Medicine and Clinical Chemistry.

Vanderbilt University Medical Center and Vanderbilt Children's Hospital are expanding



in many areas with a top NCI-designated Comprehensive Cancer Center, multifaceted organ and stem cell transplantation programs, innovative educational programs, and abundant clinical and translational research and basic science programs.

Located in the heart of Nashville, Tennessee, Vanderbilt University is one of the nation's leading research and teaching institutions with undergraduate and medical programs contiguous on the same campus. Nashville, the capital of Tennessee, is a growing cosmopolitan area with a Metropolitan population exceeding 1.9 million, a rich and growing surrounding greater area, diverse entertainment, excellent schools and easy access to outdoor activities.



VANDERBILT UNIVERSITY
MEDICAL CENTER

Pathology, Microbiology & Immunology
Graduate Education Office
Attn: Surgical Pathology Fellowship
1161 21st Ave. South
CC-3322 MCN
Nashville, TN 37232-2561
(615) 343-4882 x2
path.fellow@vumc.org