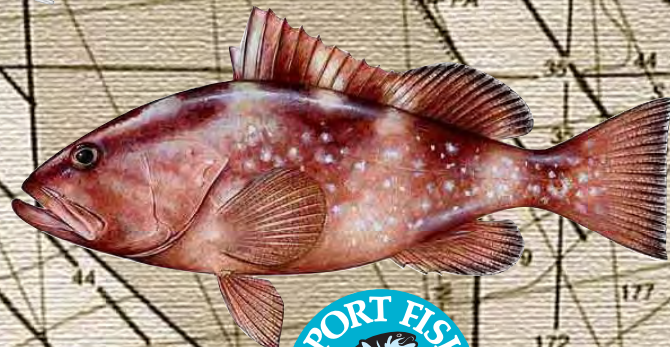
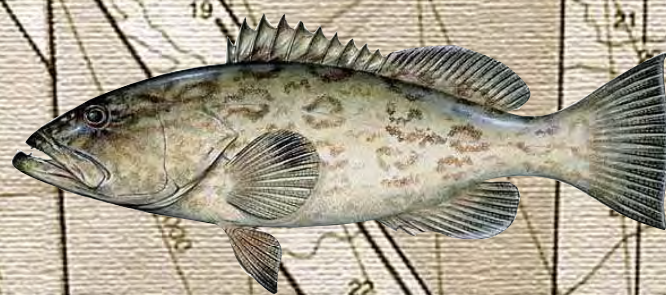
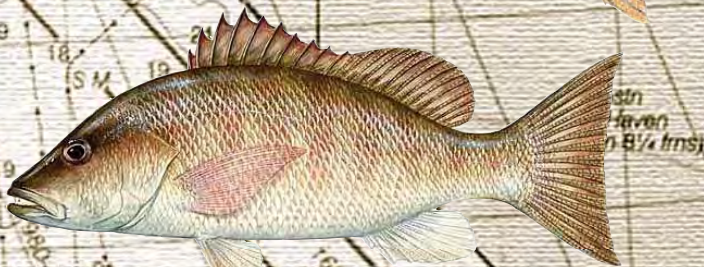
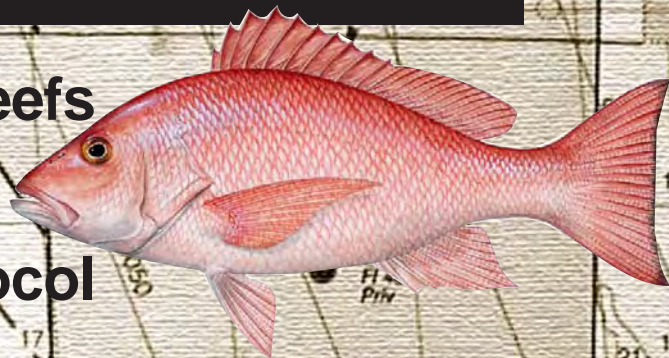


Alabama's Artificial Reefs

A Fishing Information Guide

- Offshore and Inshore Reefs
- Reef Location Charts
- GPS Coordinates
- Reef Construction Protocol
- Program History

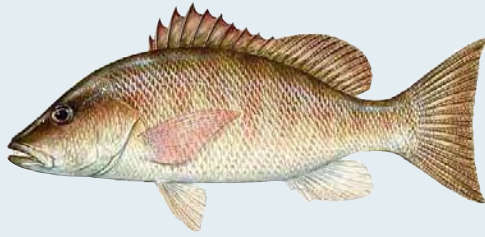


Revised 2009



Marine Resources Division
ALABAMA DEPARTMENT OF CONSERVATION
AND NATURAL RESOURCES

ALABAMA ARTIFICIAL REEF GENERAL PERMIT AREAS



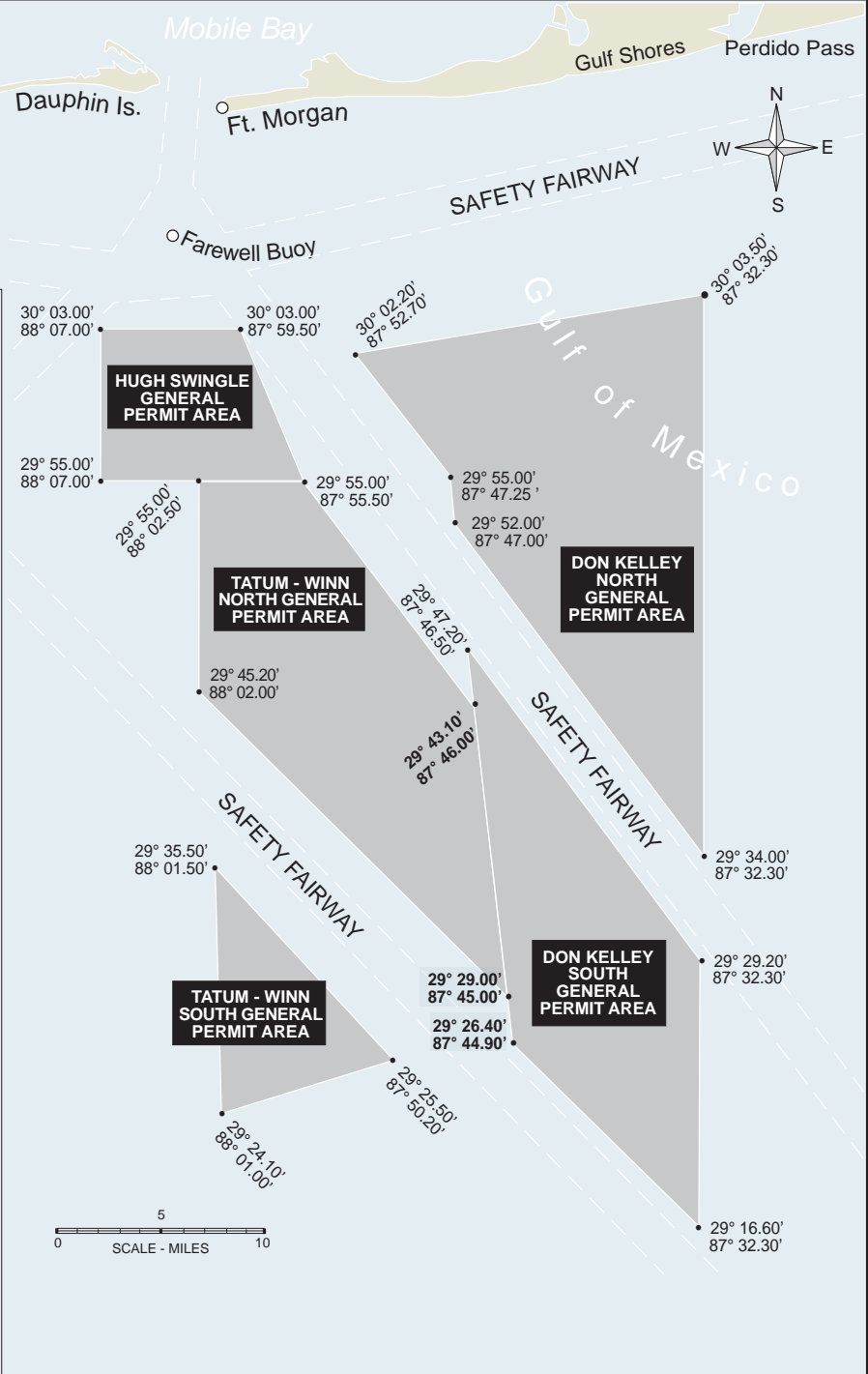
ALABAMA'S ARTIFICIAL REEF PROGRAM

Alabama has one of the largest artificial reef programs in the world. The natural bottom of offshore Alabama is a predominately flat sand/mud type bottom. This bottom type attracts very few fish that are either commercially or recreationally valuable. However, it has long been known that if vertical relief is created on this bottom, many reef fish such as snappers and groupers will be produced. In fact, artificial reefs can be created that over time will appear as natural reefs with similar communities of encrusting organisms and bait fish. As various encrusting organisms such as corals and sponges cover the artificial reef material, small animals take up residence. On-going research within Alabama's artificial reef general permit areas indicates that juvenile red snapper recruit to new, uninhabited artificial reefs, aging with the reef, and recruiting to the fishery at an appropriate size. At that point the artificial reef functions as a natural reef.

Alabama's artificial reef building program started in 1953 when the Orange Beach Charter Boat Association asked for the authority to place 250 car bodies off Baldwin County, Alabama. This proved to be very successful and in the years since, many different types of materials have been placed offshore of Alabama. These have included additional car bodies, culverts, bridge rubble, barges, boats and planes. In 1974, in an excellent example of State/Federal cooperation, several "ghost-fleeted" liberty ships were sunk in five locations off Mobile and Baldwin Counties in 80-93 feet of water.

In 1987, a general permit was issued by the U. S. Army Corps of Engineers creating specific areas offshore of Alabama for the creation of artificial reefs. These were created in order to provide areas for these materials in order to coordinate with other users of the offshore area. In 1987 the areas encompassed almost 800 square miles.

In 1993, the U. S. military in addressing the need to de-militarize obsolete battle tanks realized that immersion in sea water was an acceptable method. The idea was presented to the Marine Resources Division and development of an operation plan began. Reef-Ex is the program name



associated this activity. In 1994, one-hundred M-60 military tanks were deployed as artificial reefs in depths of 70 to 110 feet of water within the Hugh Swingle and Don Kelley North permit areas. The conservative estimate for the life span of the tanks is 50 years as artificial reefs.

In late 1997, the U. S. Army Corps of Engineers authorized an expansion of Alabama's artificial reef construction areas to allow for greater freedom in reef placement and greater variety in depth. The combined area for all reef permit zones now encompasses approximately 1260 square miles. At the same time, the protocol for reef construction was modified. This modification limited the types of materials that can be used to construct artificial reefs. Enforcement of the protocol and placement of reefs is a joint effort of the Marine Resources Enforcement Section, the Alabama Marine Police Division, and the U. S. Coast Guard.

PUBLIC REEFS - DON KELLEY NORTH GENERAL PERMIT AREA



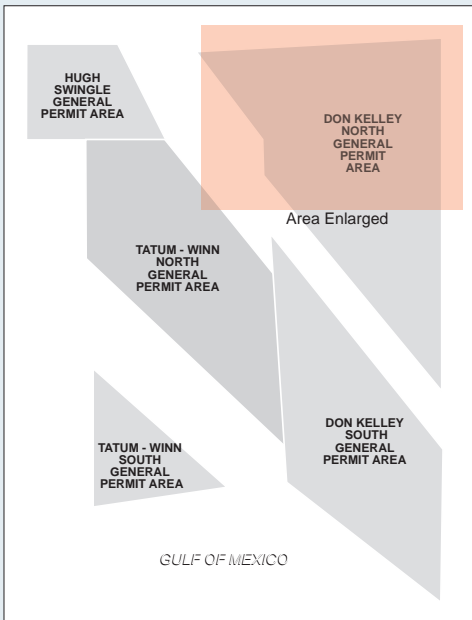
General Public Reefs

Sparkman Reef	29°59.676	87°43.050	Lillian Bridge	30°06.881	87°32.685
Wallace Reef	30°05.235	87°34.636	Perdido Pass Bridge 1	30°01.913	87°33.545
105' Tug	30°03.888	87°42.455	Perdido Pass Bridge 2	30°02.309	87°33.245
Lipscomb Tug	30°04.880	87°48.180	Perdido Pass Bridge 3	30°02.805	87°33.100
Buffalo Barge I	30°05.040	87°49.950	Perdido Pass Bridge 4	30°03.122	87°32.873
Buffalo Barge II	30°04.780	87°50.440	Perdido Pass Bridge 5	30°03.630	87°32.716
CSX Reef Boxcars	29°59.563	87°33.371			
Hunt Reef	29°56.110	87°41.864			

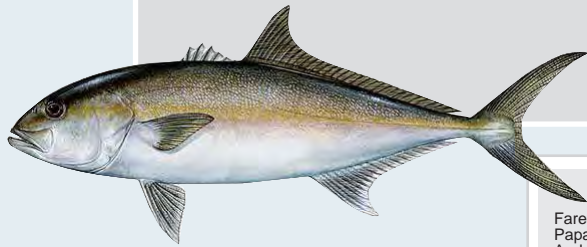
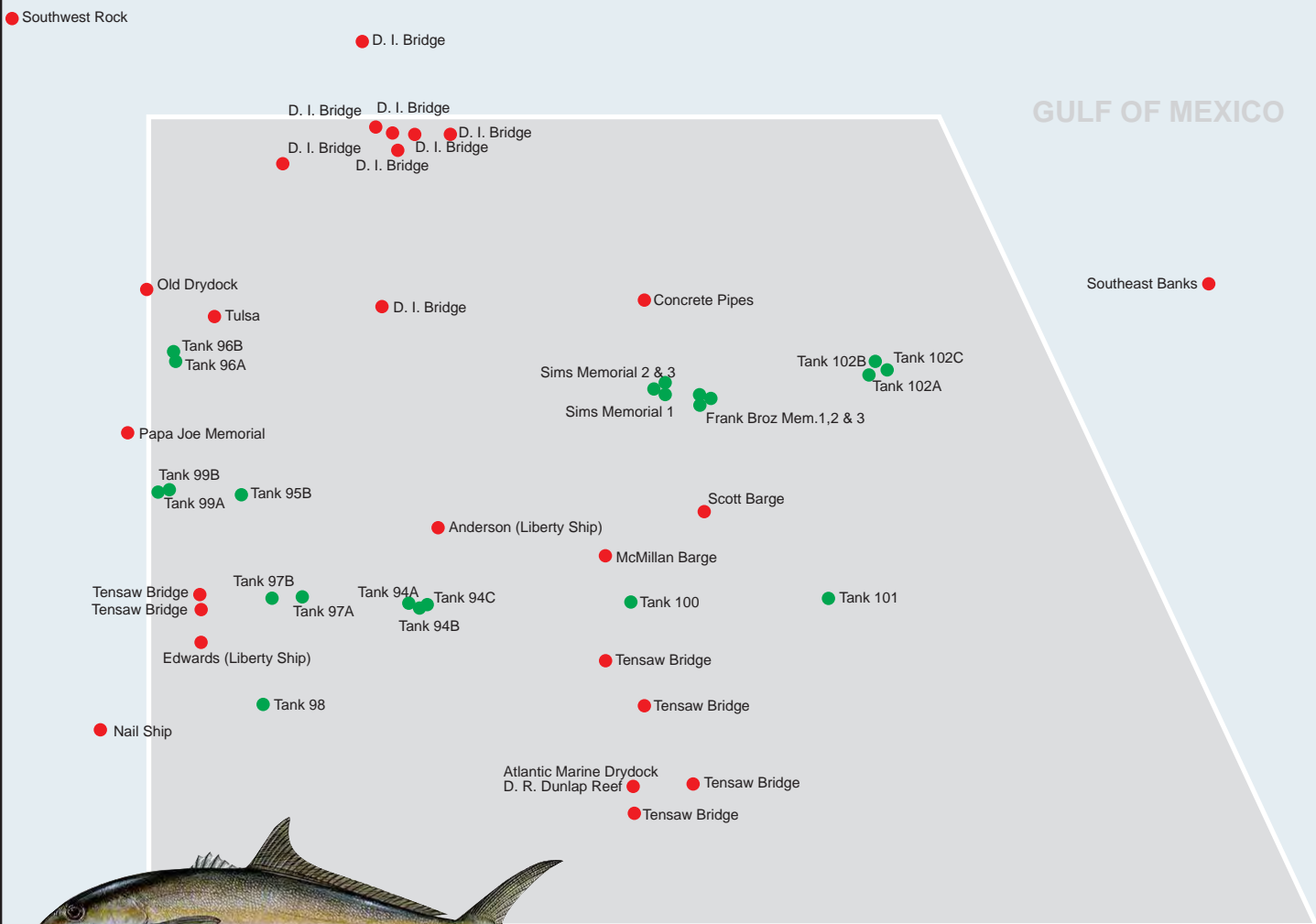
Military Tank Reefs

Tank 38	30°00.691	87°43.911	Tank 74	29°58.718	87°46.595
Tank 39	29°59.715	87°43.791	Tank 74	29°58.689	87°46.596
Tank 40	29°58.652	87°43.714	Tank 75 *	29°59.736	87°42.790
Tank 41	29°57.670	87°43.645	Tank 76 *	29°55.830	87°41.355
Tank 42	29°56.674	87°43.534	Tank 77 *	29°55.973	87°39.885
Tank 43	29°55.640	87°43.409	Tank 78	29°56.025	87°37.425
Tank 44	29°54.637	87°43.330	Tank 78	29°56.030	87°37.390
Tank 45	29°53.673	87°43.244	Tank 78	29°56.030	87°37.340
Tank 46	29°52.541	87°43.149	Tank 79	29°56.085	87°34.910
Tank 47	29°52.610	87°44.105	Tank 80	29°51.995	87°37.027
Tank 48	29°53.565	87°44.245	Tank 81	29°51.145	87°36.945
Tank 49	29°54.619	87°44.335	Tank 81	29°51.135	87°36.970
Tank 50	29°55.560	87°44.428	Tank 81	29°51.125	87°36.937
Tank 51	29°56.612	87°44.510	Tank 82	29°51.230	87°34.340
Tank 52	29°57.590	87°44.600	Tank 82	29°51.305	87°34.345
Tank 53	29°58.650	87°44.700	Tank 83 **		
Tank 54	29°59.650	87°44.800	Tank 84 **		
Tank 55	29°59.642	87°45.733	Tank 85	30°00.845	87°40.185
Tank 56	29°58.385	87°46.421	Tank 85	30°00.820	87°40.235
Tank 57	29°57.835	87°46.600	Tank 86	30°00.965	87°37.830
Tank 58	29°56.814	87°46.505	Tank 86	30°00.950	87°37.785
Tank 59	29°55.743	87°46.422	Tank 87	30°00.063	87°35.279
Tank 60	29°54.715	87°46.333	Tank 88	30°00.998	87°35.260
Tank 61	29°53.744	87°46.246	Tank 88	30°00.985	87°35.285
Tank 62	29°52.710	87°46.170	Tank 89	30°01.963	87°33.975
Tank 63	29°51.775	87°46.083	Tank 89	30°01.977	87°33.950
Tank 64	29°49.820	87°44.540	Tank 89	30°01.990	87°33.945
Tank 65	29°50.438	87°44.809	Tank 90	30°03.925	87°34.185
Tank 66	29°51.375	87°44.984	Tank 90	30°03.890	87°34.190
Tank 67	29°52.347	87°45.102	Tank 90	30°03.885	87°34.223
Tank 68	29°53.343	87°45.220	Tank 91	29°59.953	87°37.681
Tank 69	29°54.350	87°45.320	Tank 92 **		
Tank 70	29°55.368	87°45.387	Tank 93	29°59.913	87°41.961
Tank 71	29°56.208	87°45.406	Tank 93	29°59.950	87°41.980
Tank 73	29°57.376	87°45.576	Tank 93	29°59.950	87°41.980

* Multiple tanks at location ** Coordinates not available.



PUBLIC REEFS - HIGH SWINGLE GENERAL PERMIT AREA



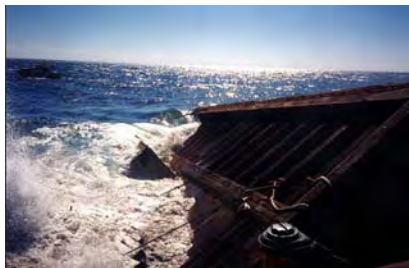
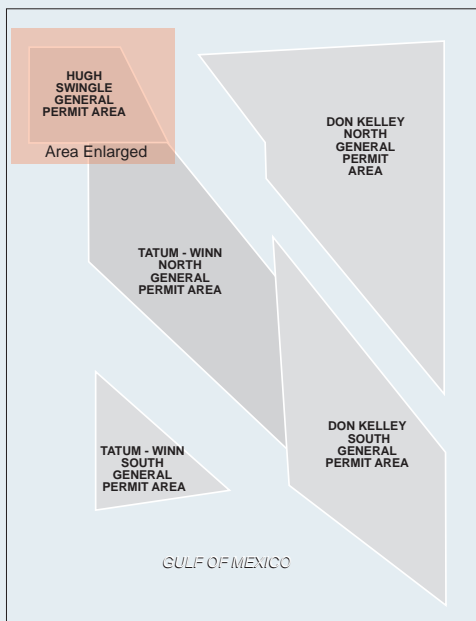
General Public Reefs ●

Farewell Buoy	30°07.490	88°04.130
Papa Joe Memorial	29°59.979	88°07.459
Anderson Reef	29°59.041	88°04.305
Old Dry-Dock	30°01.347	88°07.163
Edwards Reef	29°57.931	88°06.597
McMillan Barge	29°58.766	88°02.700
Scott Barge	30°01.425	88°01.740
Southeast Banks	30°06.414	88°12.275
Tulsa	30°01.068	88°06.462
Dauphin Isl. Bridge	30°02.537	88°05.796
Dauphin Isl. Bridge	30°02.786	88°04.565
Dauphin Isl. Bridge	30°01.170	88°04.846
Nail Ship	29°57.573	88°09.692
D. R. Dunlap Drydock	29°56.586	88°01.846
Tensaw Bridge	29°56.300	88°02.439
Tensaw Bridge	29°56.543	88°02.440
Tensaw Bridge	29°57.753	88°02.691
Tensaw Bridge	29°57.329	88°02.327
Tensaw Bridge	29°58.357	88°06.566
Tensaw Bridge	29°58.277	88°06.562

Military Tank Reefs ●

Lawrence Sims Reef *	30°00.238	88°02.156
Frank Broz Reef *	30°00.308	88°01.803
Tank 94	29°58.303	88°04.586
Tank 94	29°58.290	88°04.480
Tank 94	29°58.300	88°04.420
Tank 95 *	29°59.358	88°06.236
Tank 96	30°00.642	88°06.818
Tank 96	30°00.643	88°06.816
Tank 97	29°58.345	88°05.884
Tank 97	29°58.355	88°05.608
Tank 98	29°57.339	88°05.985
Tank 99	29°59.387	88°06.956
Tank 99	29°59.406	88°06.899
Tank 100	29°58.325	88°02.460
Tank 101	29°58.474	88°00.568
Tank 102 *	30°00.518	88°00.147

* Multiple tanks at location



Deployment of Atlantic Marine Drydock (D. R. Dunlap Reef)



M-60 Military Tank Reef

CONCRETE CULVERT PIPE REEFS - 2004

HUGH SWINGLE GENERAL PERMIT AREA

DON KELLEY NORTH GENERAL PERMIT AREA

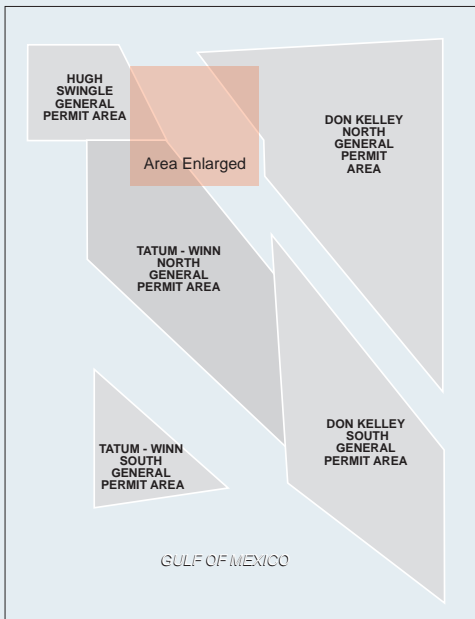
GULF OF MEXICO



TATUM - WINN NORTH GENERAL PERMIT AREA

- Hanson Pipe 1
- Hanson Pipe 2
- Hanson Pipe 3
- Mobile Co. Roadbuilders Assoc. 1
- Mobile Co. Roadbuilders Assoc. 2
- Mobile Co. Roadbuilders Assoc. 3

- Atlantic Marine Pipe 1
- Atlantic Marine Pipe 2
- Atlantic Marine Pipe 3



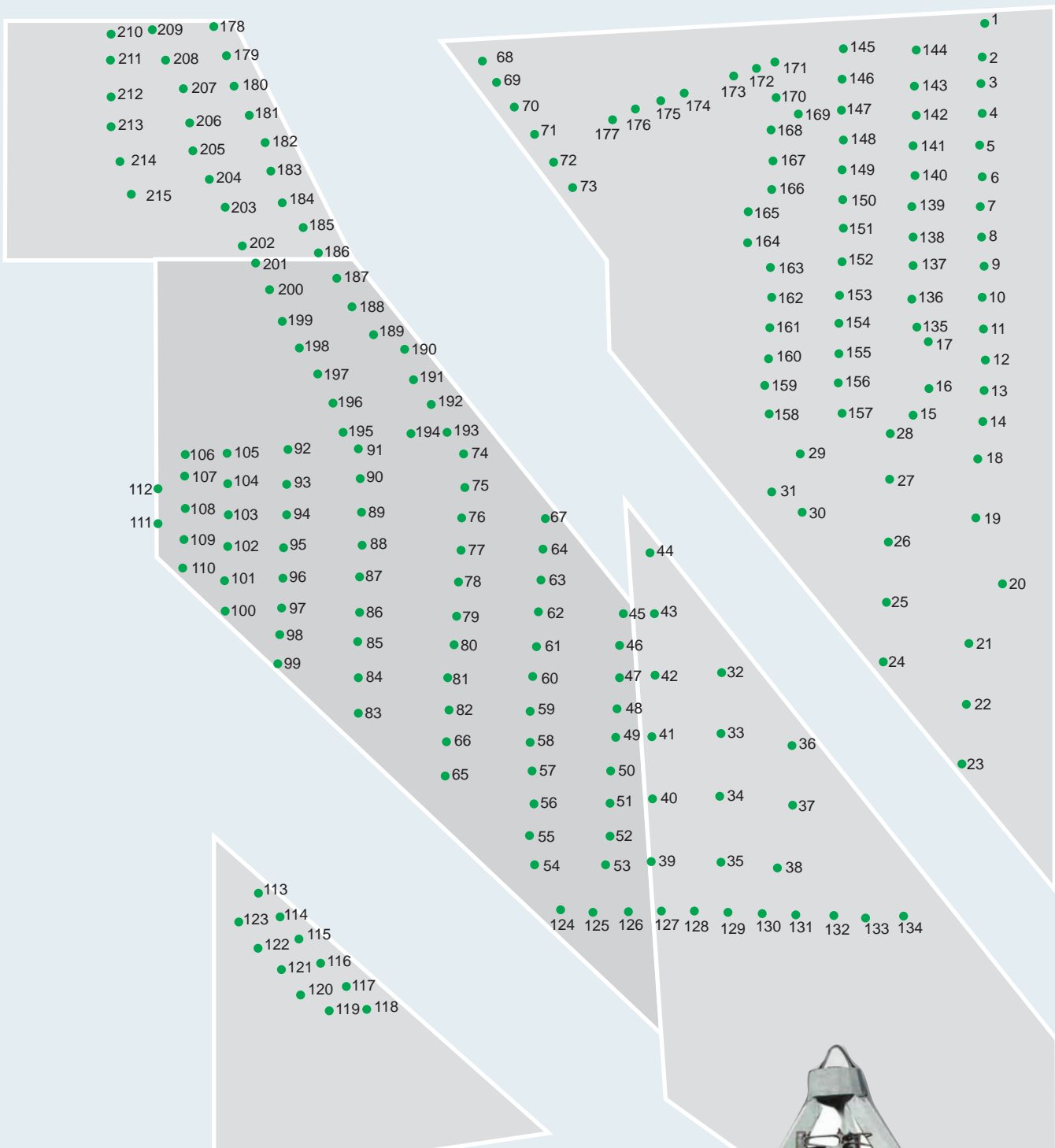
Mobile Co. Roadbuilders 1	29°55.087 - 87°57.535
Mobile Co. Roadbuilders 2	29°54.087 - 87°57.002
Mobile Co. Roadbuilders 3	29°53.045 - 87°57.520

Hanson Pipe 1	29°57.544 - 87°58.626
Hanson Pipe 2	29°56.509 - 87°58.577
Hanson Pipe 3	29°55.512 - 87°58.582

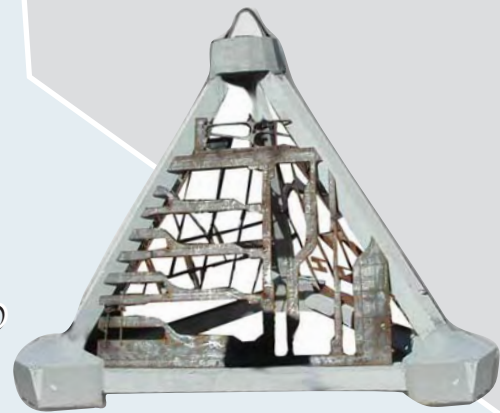
Atlantic Marine Pipes 1	30°02.002 - 87°49.566
Atlantic Marine Pipes 2	30°01.042 - 87°49.564
Atlantic Marine Pipes 3	30°00.004 - 87°49.561



RSWC* ARTIFICIAL REEF MODULES - 2004 DEPLOYMENT



GULF OF MEXICO

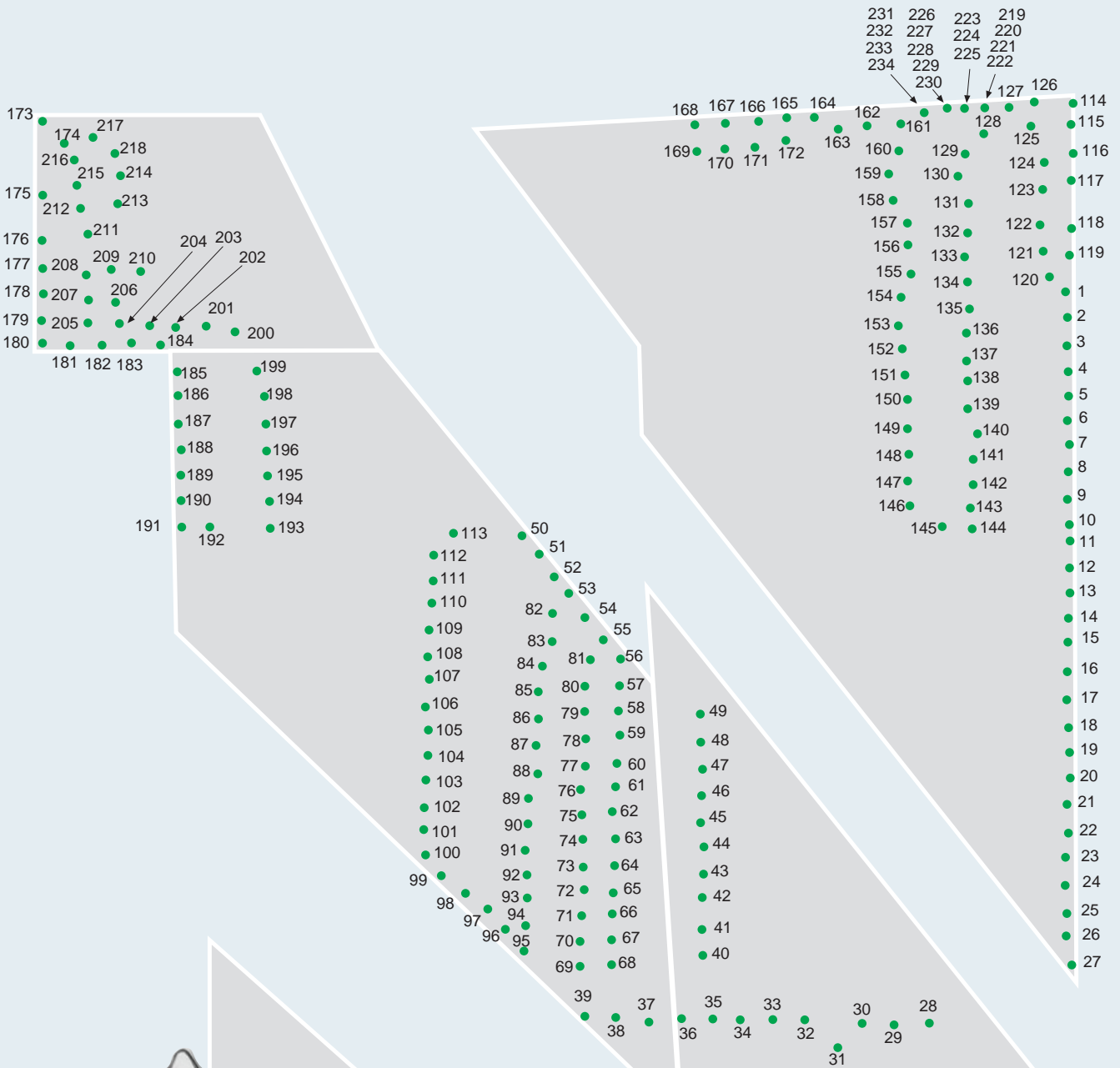


RSWC* (Red Snapper World Championship)
 Visit: www.redsnapperworldchampionship.com

RSWC 2004 REEF MODULES - GPS COORDINATES

Reef #	Sponsor Name	Lat.	Long	Reef #	Sponsor Name	Lat.	Long
1	Flora-Bama 1	30°02.894	87°34.648	109	Convention & Visitors Bureau #10	29°45.858	88°01.065
2	Flora-Bama 2	30°01.844	87°34.691	110	Convention & Visitors Bureau #11	29°44.867	88°01.057
3	Reynold's Ready Mix USA Pope #1	30°00.889	87°34.744	111	Convention & Visitors Bureau #12	29°46.442	88°01.933
4	Reynold's Ready Mix USA Butts #2	29°59.876	87°34.719	112	Convention & Visitors Bureau #13	29°47.499	88°01.935
5	Reynold's Ready Mix USA #3	29°58.854	87°34.800	113	Convention & Visitors Bureau #14	29°33.538	87°59.821
6	Reynold's Ready Mix USA #4	29°57.831	87°34.690	114	Convention & Visitors Bureau #15	29°32.789	87°59.148
7	Reynold's Ready Mix USA #5	29°56.842	87°34.727	115	The Reef Maker #1	29°32.030	87°58.452
8	Joe Raley Builders - Big Momma	29°55.832	87°34.696	116	The Reef Maker #2	29°31.231	87°57.769
9	Joe Raley Builders	29°54.855	87°34.636	117	Radcliff Economy & Marine #1	29°30.456	87°56.990
10	Top Gun Tackle #1	29°53.832	87°34.702	118	ValvTect #1	29°29.707	87°56.220
11	Top Gun Tackle #2	29°52.774	87°34.671	119	RE/MAX of Gulf Shores #1	29°29.650	87°57.482
12	Home Port Marina #1	29°51.783	87°34.613	120	RE/MAX of Gulf Shores #2	29°30.246	87°58.389
13	Home Port Marina #2	29°50.728	87°34.653	121	RE/MAX of Gulf Shores #3	29°31.014	87°59.062
14	Home Port Marina #3	29°49.732	87°34.680	122	RE/MAX of Gulf Shores #4	29°31.732	87°59.826
15	Home Port Marina #4	29°49.953	87°36.989	123	RE/MAX of Gulf Shores #5	29°32.545	88°00.479
16	Home Port Marina #5	29°50.849	87°36.478	124	Kaiser Realty Inc. #1	29°33.568	87°48.617
17	Brett Robinson #1	29°52.410	87°36.467	125	Kaiser Realty Inc. #2	29°33.501	87°47.578
18	Brett Robinson #2	29°48.509	87°34.831	126	Kaiser Realty Inc. #3	29°33.523	87°46.449
19	Brett Robinson #3	29°46.514	87°34.878	127	Kaiser Realty Inc. #4	29°33.526	87°45.300
20	Brett Robinson #4	29°44.368	87°34.005	128	Kaiser Realty Inc. #5	29°33.541	87°44.210
21	Brett Robinson #5	29°42.390	87°35.126	129	Caribe Resort #1	29°33.489	87°43.105
22	Brett Robinson #6	29°40.382	87°35.221	130	Caribe Resort #2	29°33.471	87°41.987
23	Brett Robinson #7	29°38.381	87°35.420	131	Tacky Jacks #1	29°33.440	87°40.875
24	Brett Robinson #8	29°41.777	87°37.974	132	Tacky Jacks #2	29°33.390	87°39.623
25	Brett Robinson #9	29°43.751	87°37.875	133	Orange Beach Auto & Marine #1	29°33.308	87°38.584
26	Brett Robinson #10	29°45.774	87°37.801	134	Orange Beach Auto & Marine #2	29°33.364	87°37.324
27	Brett Robinson #11	29°47.769	87°37.732	135	Live Bait I	29°52.854	87°36.917
28	Brett Robinson #12	29°49.316	87°37.797	136	Live Bait II	29°53.813	87°37.047
29	Brett Robinson #13	29°48.685	87°40.695	137	Live Bait III	29°54.855	87°36.983
30	Brett Robinson #14	29°46.747	87°40.621	138	Live Bait IV	29°55.828	87°36.992
31	Brett Robinson #15	29°47.410	87°41.576	139	Live Bait V	29°56.868	87°37.046
32	Brett Robinson #16	29°41.472	87°43.296	140	Baldwin Co. E.M.C. leader	29°57.857	87°36.944
33	Brett Robinson #17	29°39.426	87°43.323	141	Baldwin Co. E.M.C. member	29°58.855	87°36.978
34	Brett Robinson #18	29°37.359	87°43.346	142	Baldwin Co. E.M.C. community	29°59.853	87°36.922
35	Brett Robinson #19	29°35.230	87°43.334	143	Baldwin Co. E.M.C. cooperative	30°00.839	87°37.009
36	Brett Robinson #20	29°39.076	87°40.967	144	Baldwin Co. E.M.C. environmental	30°02.005	87°36.904
37	J & M Tackle #1	29°37.023	87°40.997	145	City of Orange Beach- Sea Spray	30°02.043	87°39.276
38	J & M Tackle #2	29°35.013	87°41.492	146	City of Orange Beach- Shady Lady	30°01.015	87°39.355
39	J & M Tackle #3	29°35.202	87°45.620	147	Bud #1	30°00.025	87°39.381
40	J & M Tackle #4	29°37.270	87°45.585	148	Ultra #1	29°59.066	87°39.303
41	J & M Tackle #5	29°39.318	87°45.617	149	BBD #1	29°58.055	87°39.348
42	Blue Water Ship Stores #1	29°41.338	87°45.562	150	Busch #1	29°57.077	87°39.281
43	Blue Water Ship Stores #2	29°43.383	87°45.563	151	Lauren #1	29°56.089	87°39.303
44	The Rod Room #1	29°45.407	87°45.684	152	Heavy Gravy	29°55.033	87°39.329
45	The Rod Room #2	29°43.371	87°46.582	153	Miss Sally	29°53.910	87°39.412
46	Zeke's Landing #1	29°42.358	87°46.691	154	Cummins Quantum Hole	29°52.995	87°39.424
47	Zeke's Landing #2	29°41.264	87°46.705	155	Mid South Spot	29°51.984	87°39.436
48	Zeke's Landing #3	29°40.218	87°46.761	156	Christian Mahlstedt	29°51.039	87°39.472
49	Zeke's Landing #4	29°39.299	87°46.799	157	Lucas Mahlstedt	29°49.980	87°39.347
50	Zeke's Landing #5	29°38.174	87°46.982	158	Amelie	29°49.991	87°41.784
51	Zeke's Landing #6	29°37.138	87°46.982	159	Whitney	29°50.938	87°41.885
52	Zeke's Landing #7	29°36.022	87°47.020	160	Mikee s	29°51.840	87°41.754
53	Zeke's Landing #8	29°35.057	87°47.141	161	The Shrimp Basket	29°52.805	87°41.751
54	Zeke's Landing #9	29°35.053	87°49.472	162	McCarron Insurance Group #1	29°53.839	87°41.659
55	Zeke's Landing #10	29°36.046	87°49.649	163	Sally's Fishing Hole	29°54.810	87°41.682
56	Foley Beach Express #1	29°37.105	87°49.491	164	Tom Bagwell Reef	29°55.630	87°42.437
57	Foley Beach Express #2	29°38.166	87°49.538	165	William Radcliff Reef	29°56.643	87°42.446
58	International Insurance - Kit Steber	29°39.174	87°49.644	166	Capt Sunny Trimble Memorial-War Eagle	29°57.391	87°41.638
59	International Insurance - Drew Steber	29°40.206	87°49.610	167	L.H. Washington Memorial - War Eagle	29°58.345	87°41.663
60	City of Orange Beach- Albacore II	29°41.274	87°49.496	168	Outcast Marina	29°59.394	87°41.694
61	City of Orange Beach- Annie Girl	29°42.304	87°49.391	169	Outcast Marina	29°59.894	87°40.765
62	City of Orange Beach- Aquastar	29°43.408	87°49.309	170	Jim Brown Construction	30°00.482	87°41.537
63	City of Orange Beach- Ashley Reene	29°44.462	87°49.209	171	Sabel Steel #1	30°01.585	87°41.610
64	City of Orange Beach- Big Adventure	29°45.504	87°49.139	172	Sabel Steel #2	30°01.396	87°42.217
65	City of Orange Beach- Bull Weevil	29°38.044	87°52.451	173	Salzman Farms #1	30°01.162	87°42.933
66	City of Orange Beach- C.A.T.	29°39.157	87°52.387	174	Salzman Farms #2	30°00.570	87°44.553
67	City of Orange Beach- C-ROSE	29°46.512	87°49.148	175	Sandy Wade Reef	30°00.285	87°45.320
68	City of Orange Beach- Catch-It	30°02.020	87°54.870	176	SanRoc Cay Reef	29°59.973	87°46.133
69	City of Orange Beach- Chippers Clipper	30°00.947	87°50.711	177	RM #1	29°59.637	87°46.884
70	City of Orange Beach- Class Act	30°00.123	87°50.138	178	RM #2	30°02.741	88°00.111
71	City of Orange Beach- Cool Breeze	29°59.261	87°49.511	179	The Sportsman Skiff	30°01.800	87°59.659
72	City of Orange Beach- Cool Change	29°58.327	87°48.887	180	Sportman Marina	30°00.821	87°59.372
73	City of Orange Beach- Crosstie	29°57.479	87°48.246	181	Trent Marina #1	29°59.869	87°58.926
74	City of Orange Beach- Distraction	29°48.655	87°51.810	182	Trent Marina #2	29°58.974	87°58.396
75	City of Orange Beach- Doug Out	29°47.557	87°51.753	183	Vision Bank #1	29°58.001	87°58.204
76	City of Orange Beach- Fairwater II	29°46.559	87°51.888	184	Vision Bank #2	29°57.008	87°57.825
77	City of Orange Beach- Fish'n Fool	29°45.445	87°51.905	185	Zeke's Boat Sales #1	29°56.148	87°57.205
78	City of Orange Beach- Fish Trap	29°44.404	87°52.020	186	Zeke's Boat Sales #2	29°55.283	87°56.650
79	City of Orange Beach- Getaway	29°43.275	87°52.110	187	Dora's Reef	29°54.431	87°56.037
80	City of Orange Beach- Guff Rebel	29°42.329	87°52.138	188	Rick's Reef	29°53.525	87°55.542
81	City of Orange Beach- Hey Boy II	29°41.266	87°52.362	189	James' Reef	29°52.641	87°54.852
82	City of Orange Beach- Hot Spot	29°40.176	87°52.304	190	Nina's Reef	29°52.123	87°53.800
83	City of Orange Beach- Intimidator	29°40.109	87°55.322	191	Willy's Reef	29°51.114	87°53.529
84	City of Orange Beach- Intruder	29°41.273	87°55.319	192	LCPL Philip J. Shermer, III	29°50.311	87°52.927
85	City of Orange Beach- Island Girl	29°42.479	87°55.309	193	William L. Marks	29°49.405	87°52.374
86	City of Orange Beach- Jamie G	29°43.440	87°55.256	194	John C. Hope III	29°49.350	87°53.574
87	City of Orange Beach- Joyce	29°44.610	87°55.280	195	Robert C. Baird	29°49.372	87°55.830
88	City of Orange Beach- Lady D	29°45.646	87°55.184	196	John M. Turner	29°50.355	87°56.175
89	City of Orange Beach- Mamas Money	29°46.732	87°55.212	197	Vinyl Solutions	29°51.307	87°56.670
90	City of Orange Beach- Miss Celeste	29°47.850	87°55.267	198	Visual Effects	29°52.209	87°57.261
91	City of Orange Beach- Misty	29°48.797	87°55.322	199	Fish Camp Restaurants #1	29°53.067	87°57.841
92	City of Orange Beach- Necessity	29°48.806	87°57.649	200	Fish Camp Restaurants #2	29°54.056	87°58.207
93	City of Orange Beach- Outcast	29°47.706	87°57.692	201	Performance Contractors Reef #1	29°54.987	87°58.690
94	City of Orange Beach- Reef Chief	29°46.672	87°57.697	202	Brandon Favre Reef	29°55.539	87°59.121
95	City of Orange Beach- Reel Surprise	29°45.600	87°57.781	203	Outcast Bait & Tackle #1	29°56.791	87°59.730
96	City of Orange Beach- Hip Tide	29°44.572	87°57.791	204	Outcast Bait & Tackle #2	29°57.737	88°00.213
97	City of Orange Beach- Robin Lynne	29°43.558	87°57.861	205	Outcast Bait & Tackle #3	29°58.686	88°00.760
98	Chris Myers Nissan	29°42.682	87°57.912	206	Outcast Bait & Tackle #4	29°59.600	88°00.900
99	Chris Myers Auto Mall	29°41.689	87°57.989	207	Outcast Bait & Tackle #5	30°00.729	88°01.057
100	Convention & Visitors Bureau #1	29°43.476	87°59.697	208	First National Bank #1	30°01.662	88°01.628
101	Convention & Visitors Bureau #2	29°44.525	87°59.730	209	First National Bank #2	30°02.623	88°02.175
102	Convention & Visitors Bureau #3	29°45.609	87°59.627	210	Coast Marine #1	30°02.572	88°03.491
103	Convention & Visitors Bureau #4	29°46.654	87°59.630	211	Coast Marine #2	30°01.617	88°03.463
104	Convention & Visitors Bureau #5	29°47.696	87°59.637	212	Schenck Reef	30°00.482	88°03.460
105	Convention & Visitors Bureau #6	29°48.688	87°59.627	213	Schwartz Reef	29°59.494	88°03.451
106	Convention & Visitors Bureau #7	29°48.632	88°01.036	214	Sam's Spot #1	29°58.345	88°03.510
107	Convention & Visitors Bureau #8	29°47.886	88°01.025	215	Sam's Spot #2	29°56.907	88°03.315
108	Convention & Visitors Bureau #9	29°46.841	88°01.046				

RSWC ARTIFICIAL REEF MODULES - 2005 - 06 DEPLOYMENT



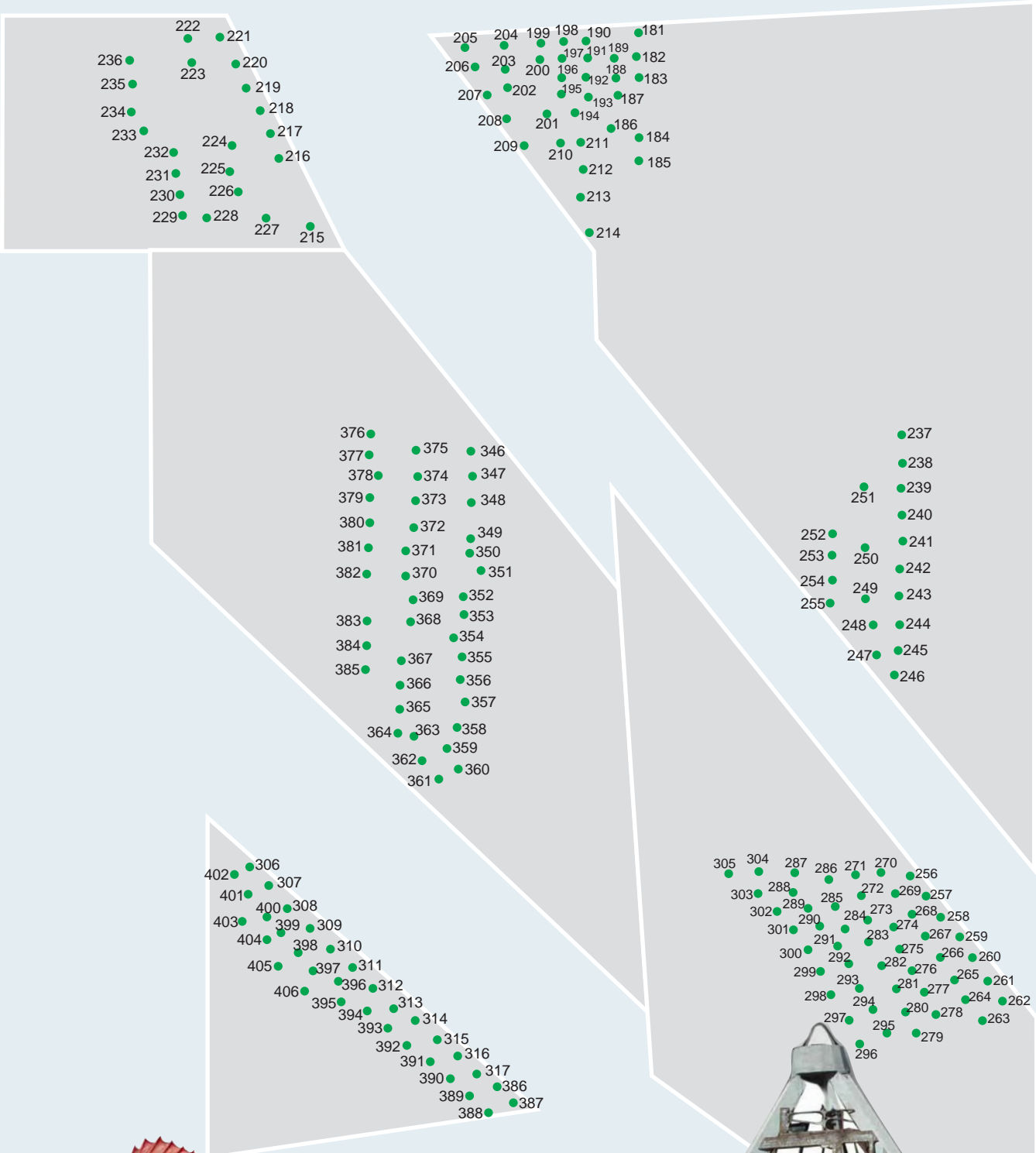
GULF OF MEXICO

RSWC* (Red Snapper World Championship)
 Visit: www.redsnapperworldchampionship.com

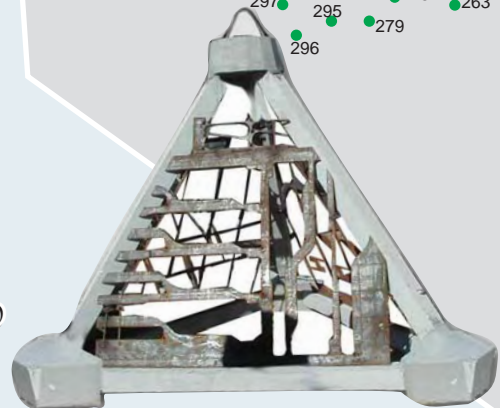
RSWC 2005 - 06 REEF MODULES - GPS COORDINATES

Reef #	Sponsor Name	Lat.	Long	Reef #	Sponsor Name	Lat.	Long
1	Reynold's Ready Mix- Walter Pope #2	29°57.046	87°32.605	118	Zeke's Landing #16	29°59.961	87°32.496
2	Reynold's Ready Mix- Walter Pope #3	29°56.139	87°32.554	119	Zeke's Landing #17	29°59.083	87°32.479
3	Reynold's Ready Mix- Walter Pope #4	29°55.275	87°32.595	120	Zeke's Landing #18	29°58.226	87°32.490
4	Reynold's Ready Mix- Harold Butts #2	29°54.385	87°32.574	121	Zeke's Landing #19	29°57.530	87°33.129
5	Reynold's Ready Mix- Harold Butts #3	29°53.535	87°32.544	122	Zeke's Landing #20	29°58.375	87°33.440
6	Ala' Gulf Coast Chamber of Commerce	29°52.693	87°32.564	123	Red's Reef	30°00.452	87°33.450
7	Ala' Gulf Coast Chamber of Commerce #2	29°51.866	87°32.547	124	Anthony's Reef	30°01.307	87°33.435
8	Brett/Robinson #21	29°50.977	87°32.521	125	Amanda Myers Reef	30°02.591	87°33.806
9	Brett/Robinson #22	29°50.108	87°32.564	126	Leslie Myers Reef	30°03.412	87°33.777
10	Brett/Robinson #23	29°49.261	87°32.465	127	Tchuopitoulas	30°03.122	87°35.414
11	Brett/Robinson #24	29°48.793	87°32.558	128	St. Charles	30°02.277	87°35.373
12	Brett/Robinson #25	29°47.890	87°32.486	129	Poydras	30°01.616	87°36.005
13	Brett/Robinson #26	29°47.021	87°32.548	130	Carondelet	30°00.784	87°36.204
14	Brett/Robinson #27	29°46.111	87°32.609	131	Gravier	29°59.947	87°35.931
15	Brett/Robinson #28	29°45.242	87°32.564	132	J.D.'s Hole	29°59.052	87°35.930
16	Brett/Robinson #29	29°44.348	87°32.583	133	Peet's Place	29°58.227	87°35.921
17	Brett/Robinson #30	29°43.412	87°32.643	134	Paradise Lost	29°57.343	87°35.946
18	Brett/Robinson #31	29°42.486	87°32.536	135	Paradise Found	29°56.483	87°35.929
19	Brett/Robinson #32	29°41.639	87°32.531	136	Sabel Steel #3	29°55.645	87°35.956
20	Brett/Robinson #33	29°40.734	87°32.510	137	Sabel Steel #4	29°54.800	87°35.961
21	Brett/Robinson #34	29°39.891	87°32.574	138	CITGO Supergard #1	29°53.965	87°35.943
22	Brett/Robinson #35	29°38.934	87°32.584	139	CITGO Supergard #2	29°53.128	87°35.904
23	Brett/Robinson #36	29°38.109	87°32.573	140	CITGO Supergard #3	29°52.319	87°35.590
24	Brett/Robinson #37	29°37.159	87°32.669	141	CITGO Supergard #4	29°51.486	87°35.746
25	Brett/Robinson #38	29°36.306	87°32.633	142	CITGO Supergard #5	29°50.619	87°35.716
26	Brett/Robinson #39	29°35.445	87°32.597	143	CITGO Supergard #6	29°49.802	87°35.780
27	Brett/Robinson #40	29°34.551	87°32.551	144	CITGO Supergard #7	29°49.093	87°35.737
28	BBD Mollie	29°32.522	87°37.210	145	CITGO Supergard #8	29°49.172	87°36.759
29	BBD Claire	29°32.525	87°38.328	146	CITGO Supergard #9	29°49.887	87°37.894
30	BBD Maggie	29°32.613	87°39.347	147	CITGO Supergard #10	29°50.760	87°37.904
31	BBD Sam	29°31.764	87°40.321	148	Top Gun Tackle #3	29°51.649	87°37.875
32	BBD Will	29°32.757	87°41.394	149	Top Gun Tackle #4	29°52.582	87°37.868
33	City of Orange Beach- Adventure Quest	29°32.734	87°42.480	150	Kaiser Realty, Inc. #6	29°53.422	87°37.946
34	City of Orange Beach- Job Site	29°32.722	87°43.514	151	Kaiser Realty, Inc. #7	29°54.268	87°38.007
35	City of Orange Beach- Barely Legal	29°32.728	87°44.447	152	Perdido Beach Resort Reef	29°55.113	87°38.049
36	City of Orange Beach- Bottom Line	29°32.727	87°45.441	153	Gulf Beach Hotels Reef	29°55.959	87°38.293
37	City of Orange Beach- Lady Ann	29°32.690	87°46.563	154	The Champ & Chump reef	29°56.757	87°38.034
38	City of Orange Beach- Miss Hollie	29°32.723	87°47.661	155	The Wickware's Reef	29°57.627	87°37.891
39	City of Orange Beach- Condo Money	29°32.776	87°48.754	156	Orange Beach Auto & Marine #3	29°47.482	87°37.897
40	City of Orange Beach- Patti Ann	29°34.806	87°44.789	157	Orange Beach Auto & Marine #4	29°59.363	87°37.912
41	City of Orange Beach- Red Eye	29°35.739	87°44.801	158	Boss Malouf	30°00.101	87°38.420
42	City of Orange Beach- Crowd Pleezer	29°36.781	87°44.784	159	Bailey Malouf	30°00.927	87°38.534
43	City of Orange Beach- Eagle Express	29°37.623	87°44.742	160	Lester's- Houston Pierce	30°01.820	87°38.211
44	City of Orange Beach- Sea Spray	29°38.487	87°44.788	161	Lester's- Leslee Faith	30°02.621	87°38.107
45	City of Orange Beach- Shady Lady	29°39.328	87°44.833	162	Lester's- Uncle Bud	30°02.542	87°39.256
46	City of Orange Beach- E-Mail	29°40.192	87°44.866	163	Lester's- Mrs Theresa	30°02.422	87°40.206
47	City of Orange Beach- Escape	29°41.072	87°44.861	164	Lester's- Estelle M.	30°02.876	87°41.002
48	City of Orange Beach- Shirley R. Too	29°41.949	87°44.834	165	Tacky Jacks #3	30°02.788	87°41.993
49	City of Orange Beach- South Wind	29°42.798	87°44.857	166	Tacky Jacks #4	30°02.707	87°42.940
50	City of Orange Beach- Summer Breeze I	29°48.929	87°50.740	167	Fish Camp Restaurants #3	30°02.652	87°44.021
51	City of Orange Beach- Summer Breeze II	29°48.219	87°50.245	168	Fish Camp Restaurants #4	30°02.565	87°45.036
52	City of Orange Beach- Summer Daze	29°47.471	87°49.732	169	Voodoo	30°01.686	87°45.007
53	City of Orange Beach- Summer Hunter	29°46.926	87°49.250	170	Black Gold Hole	30°01.759	87°44.041
54	City of Orange Beach- Sure Shot	29°46.099	87°48.682	171	Robbie	30°01.837	87°43.064
55	City of Orange Beach- Teacher's Pet	29°45.427	87°48.091	172	Kevin	30°02.089	87°42.101
56	City of Orange Beach- High Cotton	29°44.692	87°47.535	173	Vision Bank #3	30°02.920	88°06.853
57	City of Orange Beach- Traveler	29°43.816	87°47.529	174	Vision Bank #4	30°02.043	88°06.049
58	City of Orange Beach- Undertaker	29°42.990	87°47.578	175	Dizzy Bean	30°00.153	88°06.814
59	City of Orange Beach- Wishbone	29°42.187	87°47.614	176	Lilly French	29°58.698	88°06.842
60	City of Orange Beach- Zeke's Lady	29°41.317	87°47.606	177	Visual Effects #2	29°57.807	88°06.836
61	City of Orange Beach- Annie Girl #2	29°40.474	87°47.690	178	Vinyl Solutions #2	29°56.925	88°06.862
62	City of Orange Beach- Aquastar #2	29°39.642	87°47.718	179	Flora-Bama III	29°56.074	88°06.816
63	City of Orange Beach- Big Adventure #2	29°38.749	87°47.668	180	Flora-Bama IV	29°55.230	88°06.823
64	City of Orange Beach- Boll Weevil #2	29°37.886	87°47.713	181	Big Jake's	29°55.177	88°05.832
65	City of Orange Beach- Bottom Line #2	29°36.935	87°47.787	182	Franco's	29°55.171	88°04.851
66	City of Orange Beach- C-ROSE #2	29°36.207	87°47.802	183	X-treme Marine Reef	29°55.177	88°03.860
67	City of Orange Beach- C.A.T. #2	29°35.358	87°47.803	184	Don't Fish Here!	29°55.141	88°02.870
68	City of Orange Beach- Catch-It #2	29°34.489	87°47.860	185	Radcliff Economy & Marine #2	29°54.389	88°02.379
69	CVB Reef #16	29°34.481	87°48.805	186	ValvTect #2	29°53.520	88°02.323
70	CVB Reef #17	29°35.327	87°48.806	187	The Beach Club #1	29°52.591	88°02.302
71	CVB Reef #18	29°36.198	87°48.818	188	The Beach Club #2	29°51.703	88°02.227
72	CVB Reef #19	29°37.033	87°48.772	189	Hunter's Reef	29°50.877	88°02.162
73	CVB Reef #20	29°37.862	87°48.758	190	Hyperion Construction	29°50.015	88°02.190
74	CVB Reef #21	29°38.735	87°48.749	191	Wadeley #1	29°49.143	88°02.130
75	CVB Reef #22	29°39.532	87°48.745	192	Jason's Reef 21	29°49.164	88°01.196
76	CVB Reef #23	29°40.403	87°48.825	193	First Gulf Bank- Linda Wheatley Reef	29°49.154	87°59.207
77	CVB Reef #24	29°41.244	87°48.710	194	First Gulf Bank- Robert Seaborn Reef	29°50.056	87°59.209
78	CVB Reef #25	29°42.085	87°48.696	195	Kelsey Mac's Reef	29°50.904	87°59.284
79	CVB Reef #26	29°42.957	87°48.662	196	Kaitlin B's Reef	29°51.790	87°59.340
80	CVB Reef #27	29°43.815	87°48.643	197	In Memory of Jeff Cooper	29°52.640	87°59.369
81	CVB Reef #28	29°44.726	87°48.484	198	We'll See	29°53.482	87°59.428
82	CVB Reef #29	29°46.272	87°49.788	199	Jim Brown #2	29°54.332	87°59.719
83	CVB Reef #30	29°45.341	87°49.865	200	Jim Brown #3	29°55.670	88°00.364
84	Foley Beach Express #3	29°44.496	87°50.156	201	Outcast Marina #3	29°55.870	88°01.306
85	Foley Beach Express #4	29°43.613	87°50.222	202	Mathew's Reef	29°55.692	88°02.315
86	Homeport Marina #6	29°42.767	87°50.257	203	The Reef Maker #3	29°55.911	88°03.247
87	Homeport Marina #7	29°41.823	87°50.329	204	Brandy Rhodes	29°55.919	88°04.219
88	Homeport Marina #8	29°40.934	87°50.230	205	Cody Rhodes	29°55.915	88°05.238
89	Homeport Marina #9	29°40.122	87°50.580	206	Bear Point Marina Reef	29°56.641	88°04.368
90	Homeport Marina #10	29°39.249	87°50.609	207	Sandy Wade Reef #2	29°56.787	88°05.260
91	Chris Steber Reef	29°38.413	87°50.715	208	City of Gulf Shores #1	29°57.483	88°05.290
92	Michele Steber Reef	29°37.535	87°50.677	209	City of Gulf Shores #2	29°57.709	88°04.449
93	Eric Mahlstedt	29°36.722	87°50.684	210	City of Gulf Shores #3	29°57.670	88°03.545
94	Island Wide Marine Reef	29°35.854	87°50.699	211	City of Gulf Shores #4	29°58.955	88°05.258
95	J&M Tackle #6	29°34.999	87°50.737	212	City of Gulf Shores #5	29°59.760	88°05.639
96	J&M Tackle #7	29°35.710	87°51.375	213	City of Gulf Shores #6	29°59.950	88°04.260
97	J&M Tackle #8	29°36.357	87°51.973	214	City of Gulf Shores #7	30°00.846	88°04.208
98	J&M Tackle #9	29°36.936	87°52.704	215	City of Gulf Shores #8	30°00.606	88°05.732
99	J&M Tackle #10	29°37.562	87°53.444	216	City of Gulf Shores #9	30°01.448	88°05.709
100	Riverwalk Orange Beach	29°38.196	87°54.029	217	City of Gulf Shores #10	30°02.127	88°05.110
101	Gulf World Marine Park	29°39.020	87°54.069	218	Caribe #3	30°01.605	88°04.359
102	Sam's Spot #3	29°39.819	87°54.059	219	Caribe #4	30°03.098	87°36.081
103	Sam's Spot #4	29°40.643	87°54.027	220	David Askew Jr.	30°03.058	87°36.168
104	Sam's Spot #5	29°41.483	87°53.941	221	Earlene Askew	30°03.085	87°36.289
105	Sam's Spot #6	29°42.323	87°53.964	222	Baldwin County EMC Reef #6	30°03.074	87°36.421
106	Sam's Spot #7	29°43.165	87°53.980	223	Baldwin County EMC Reef #7	30°03.060	87°37.257
107	RM #3	29°44.031	87°53.909	224	Charlene Farve Reef	30°03.056	87°37.337
108	RM #4	29°44.877	87°53.961	225	Shelley Farve Reef	30°03.051	87°37.543
109	Owen's Reef	29°45.741	87°53.860	226	Sportsman's Marine in Fairhope #1	30°02.952	87°38.551
110	Toby's Reef	29°46.574	87°53.805	227	Sportsman's Marine in Fairhope #2	30°02.981	87°38.617
111	The Rod Room #3	29°47.408	87°53.769	228	RE/MAX #1	30°02.971	87°38.697
112	The Rod Room #4	29°48.294	87°53.771	229	RE/MAX #2	30°02.972	87°38.783
113	Zeke's Landing #11	29°48.969	87°53.141	230	RE/MAX #3	30°02.938	87°38.932
114	Zeke's Landing #12	30°03.380	87°32.471	231	RE/MAX #4	30°02.953	87°39.470
115	Zeke's Landing #13	30°02.507	87°32.467	232	RE/MAX #5	30°02.938	87°39.527
116	Zeke's Landing #14	30°01.657	87°32.475	233	Blue Water Scott	30°02.941	87°39.932
117	Zeke's Landing #15	30°00.805	87°32.467	234	Blue Water Chris	30°02.958	87°40.050

RSWC* ARTIFICIAL REEF MODULES - 2007 - 08 DEPLOYMENT



GULF OF MEXICO



RSWC* (Red Snapper World Championship)
 Visit: www.redsnapperworldchampionship.com

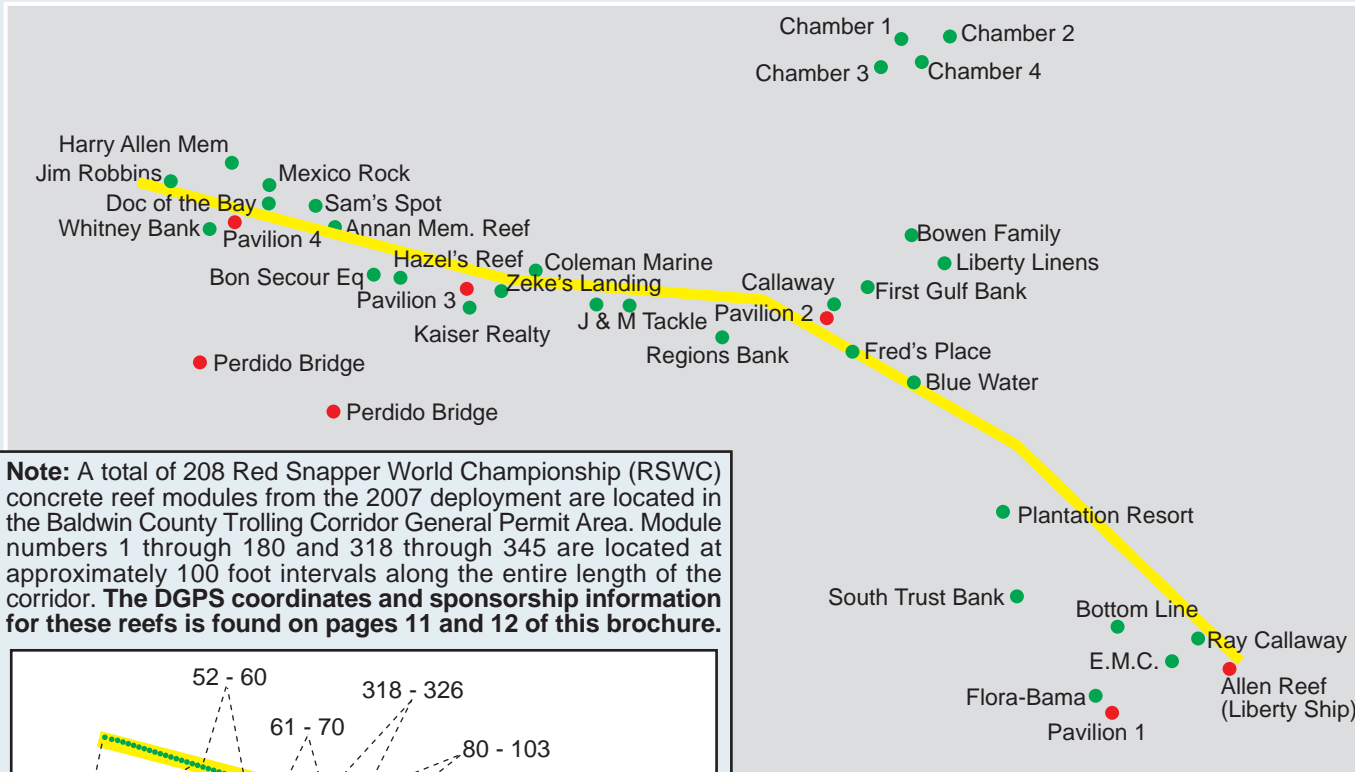
RSWC 2007 REEF MODULES - GPS COORDINATES

Reef #	Sponsor Name	Lat.	Long	Reef #	Sponsor Name	Lat.	Long
1	AFTCO #1	30°08.866	87°34.175	118	Fish Camp Restaurant #6	30°08.581	87°32.684
2	AFTCO #2	30°08.867	87°34.182	119	Foley Beach Express #5	30°08.570	87°32.672
3	AFTCO #3	30°08.876	87°34.222	120	Foley Beach Express #6	30°08.559	87°32.666
4	AFTCO #4	30°08.878	87°34.226	121	Foley Beach Express #7	30°08.545	87°32.639
5	Baldwin EMC #8	30°08.893	87°34.314	122	Foley Beach Express #8	30°08.536	87°32.632
6	Baldwin EMC #9	30°08.892	87°34.304	123	Xtreme Marine #2	30°08.526	87°32.619
7	Baldwin EMC #10	30°08.890	87°34.289	124	Xtreme Marine #3	30°08.517	87°32.610
8	Baldwin EMC #11	30°08.888	87°34.270	125	Xtreme Marine #4	30°08.507	87°32.599
9	Baldwin EMC #12	30°08.884	87°34.253	126	Xtreme Marine #5	30°08.497	87°32.587
10	Baldwin EMC #13	30°08.880	87°34.239	127	Galati Yacht Sales #1	30°08.486	87°32.576
11	Bender Shipyards #1	30°08.876	87°34.221	128	Galati Yacht Sales #2	30°08.477	87°32.564
12	Bender Shipyards #2	30°08.874	87°34.209	129	Galati Yacht Sales #3	30°08.469	87°32.555
13	Bender Shipyards #3	30°08.872	87°34.189	130	Jason Collings Reef	30°08.462	87°32.547
14	Bender Shipyards #4	30°08.862	87°34.152	131	Gary Finch Outdoors #1	30°08.456	87°32.541
15	Doc's Seafood Shack	30°08.859	87°34.136	132	Gary Finch Outdoors #2	30°08.451	87°32.534
16	Bubba's	30°08.855	87°34.124	133	Katelyn Finch	30°08.447	87°32.529
17	Jake's Steakhouse	30°08.850	87°34.107	134	Christopher Finch	30°08.439	87°32.521
18	Franco's Italian	30°08.847	87°34.082	135	Laura Layton	30°08.432	87°32.513
19	Blue Water John #1	30°08.842	87°34.059	136	Emily Layton	30°08.425	87°32.505
20	Blue Water John #2	30°08.837	87°34.039	137	Geno's Reef	30°08.417	87°32.496
21	Brett/Robinson #41	30°08.832	87°34.021	138	William Wyatt Reef	30°08.407	87°32.485
22	Brett/Robinson #42	30°08.829	87°33.998	139	George's Water Sports #1	30°08.399	87°32.476
23	Brett/Robinson #43	30°08.817	87°33.953	140	George's Water Sports #2	30°08.392	87°32.469
24	Brett/Robinson #44	30°08.808	87°33.921	141	Glass Inc. #1	30°08.382	87°32.459
25	Brett/Robinson #45	30°08.805	87°33.909	142	Glass Inc. #2	30°08.370	87°32.442
26	Brett/Robinson #46	30°08.802	87°33.899	143	Gulf Shores Yacht Club & Marine #1	30°08.360	87°32.430
27	BBD-Dave	30°08.796	87°33.866	144	Gulf Shores Yacht Club & Marine #2	30°08.346	87°32.415
28	BBD-Marvin	30°08.788	87°33.842	145	Gulf Shores Yacht Club & Marine #3	30°08.336	87°32.402
29	BBD-Joe	30°08.785	87°33.830	146	Gulf Shores Yacht Club & Marine #4	30°08.323	87°32.390
30	BBD-Marlin	30°08.769	87°33.776	147	Gulf States Ready Mix #1	30°08.316	87°32.381
31	BBD-Phil	30°08.763	87°33.758	148	Gulf States Ready Mix #2	30°08.307	87°32.369
32	BBD-Tony	30°08.761	87°33.749	149	Guy Harvey #1	30°08.300	87°32.362
33	BBD-Warren	30°08.759	87°33.743	150	Guy Harvey #2	30°08.294	87°32.355
34	BBD-Herbert	30°08.750	87°33.707	151	Guy Harvey #3	30°08.290	87°32.349
35	Caribe #5	30°08.749	87°33.690	152	Guy Harvey #4	30°08.283	87°32.341
36	Caribe #6	30°08.747	87°33.681	153	Hi-Liner	30°08.278	87°32.336
37	Caribe #7	30°08.743	87°33.657	154	Edward R. Gaw	30°08.272	87°32.332
38	Caribe #8	30°08.747	87°33.659	155	Tim Gaw	30°08.265	87°32.325
39	Center Coal Co. #1	30°08.757	87°33.640	156	Brooke Lamping	30°08.254	87°32.312
40	Center Coal Co. #2	30°08.757	87°33.629	157	International Assurance #1	30°08.241	87°32.296
41	Ala. Gulf Coast Chamber of Comm. #3	30°08.736	87°33.420	158	International Assurance #2	30°08.225	87°32.282
42	Ala. Gulf Coast Chamber of Comm. #4	30°08.735	87°33.441	159	International Assurance #3	30°08.212	87°32.275
43	Ala. Gulf Coast Chamber of Comm. #5	30°08.736	87°33.443	160	International Assurance #4	30°08.205	87°32.274
44	Ala. Gulf Coast Chamber of Comm. #6	30°08.737	87°33.453	161	Island House Hotel #1	30°08.215	87°32.266
45	Leslie Myers	30°08.738	87°33.457	162	Island House Hotel #2	30°08.207	87°32.257
46	Amanda Myers	30°08.739	87°33.466	163	Island House Hotel #3	30°08.201	87°32.250
47	Christian Life Church #1	30°08.739	87°33.474	164	Island House Hotel #4	30°08.195	87°32.242
48	Christian Life Church #2	30°08.740	87°33.478	165	Carol Mahlstedt	30°08.185	87°32.232
49	Christian Life Church #3	30°08.741	87°33.485	166	C.J.'s Reef	30°08.175	87°32.222
50	Christian Life Church #4	30°08.744	87°33.508	167	Island Wide Marine Reef #2	30°08.165	87°32.211
51	City of Gulf Shores Johnnie Sims Reef	30°08.747	87°33.533	168	Island Wide Marine Reef #3	30°08.152	87°32.197
52	City of Gulf Shores Claude O'Connor Reef	30°08.757	87°33.614	169	Isle of Capri #1	30°08.140	87°32.183
53	City of Gulf Shores Clarence Horton Reef	30°08.757	87°33.607	170	Isle of Capri #2	30°08.130	87°32.172
54	City of Gulf Shores Eugene Ingram Reef	30°08.753	87°33.607	171	Isle of Capri #3	30°08.122	87°32.163
55	City of Gulf Shores Mixon Jones Reef	30°08.750	87°33.589	172	Isle of Capri #4	30°08.112	87°32.153
56	City of Gulf Shores Thom. Norton, M.D. Reef	30°08.749	87°33.579	173	J&M Tackle #11	30°08.102	87°32.142
57	City of Gulf Shores David Bodenhamer Reef	30°08.749	87°33.570	174	J&M Tackle #12	30°08.091	87°32.129
58	City of Gulf Shores G.W. "Billy" Duke Reef	30°08.747	87°33.559	175	J&M Tackle #13	30°08.081	87°32.117
59	City of Orange Beach	30°08.748	87°33.552	176	J&M Tackle #14	30°08.072	87°32.107
60	City of Orange Beach	30°08.749	87°33.540	177	J&M Tackle #15	30°08.060	87°32.098
61	City of Orange Beach	30°08.738	87°33.430	178	J&M Tackle #16	30°08.051	87°32.086
62	City of Orange Beach	30°08.737	87°33.421	179	J&M Tackle #17	30°08.042	87°32.079
63	City of Orange Beach	30°08.735	87°33.415	180	J&M Tackle #18	30°08.031	87°32.076
64	City of Orange Beach	30°08.730	87°33.400	181	J&M Tackle #19	30°02.497	87°45.608
65	City of Orange Beach	30°08.733	87°33.389	182	J&M Tackle #20	30°01.725	87°45.624
66	City of Orange Beach	30°08.733	87°33.377	183	JetCenter South	30°01.032	87°45.596
67	City of Orange Beach	30°08.730	87°33.372	184	Phil Martin	29°58.890	87°45.596
68	City of Orange Beach	30°08.724	87°33.371	185	Bob	29°58.124	87°45.577
69	City of Orange Beach	30°08.719	87°33.355	186	Copy That	29°59.274	87°46.557
70	City of Orange Beach	30°08.731	87°33.341	187	Jim Brown #4	30°00.443	87°46.314
71	City of Orange Beach	30°08.718	87°33.316	188	Jim Brown #5	30°01.010	87°46.389
72	City of Orange Beach	30°08.720	87°33.298	189	Joe Raley Builders #1	30°01.732	87°46.461
73	City of Orange Beach	30°08.716	87°33.287	190	Joe Raley Builders #2	30°02.350	87°47.386
74	City of Orange Beach	30°08.717	87°33.271	191	Kaiser Realty #8	30°01.729	87°47.335
75	City of Orange Beach	30°08.722	87°33.259	192	Kaiser Realty #9	30°01.005	87°47.384
76	City of Orange Beach	30°08.717	87°33.240	193	Kaiser Realty #10	30°00.366	87°47.320
77	CVB Reef #31	30°08.721	87°33.220	194	Kaiser Realty #11	29°59.842	87°47.781
78	CVB Reef #32	30°08.716	87°33.203	195	Kaiser Realty #12	30°00.430	87°48.259
79	CVB Reef #33	30°08.720	87°33.184	196	Kaiser Realty #13	30°01.008	87°48.255
80	CVB Reef #34	30°08.721	87°33.172	197	Lamar #1	30°01.710	87°48.206
81	CVB Reef #35	30°08.716	87°33.152	198	Lamar #2	30°02.270	87°48.212
82	CVB Reef #36	30°08.718	87°33.144	199	Lamar #3	30°02.224	87°48.967
83	CVB Reef #37	30°08.718	87°33.136	200	Lamar #4	30°01.662	87°48.988
84	CVB Reef #38	30°08.717	87°33.127	201	Micah Cassaday #1	29°59.795	87°48.750
85	CVB Reef #39	30°08.717	87°33.115	202	Micah Cassaday #2	30°00.664	87°50.126
86	CVB Reef #40	30°08.715	87°33.101	203	Millicent Cassaday #1	30°01.458	87°50.170
87	CVB Reef #41	30°08.714	87°33.073	204	Millicent Cassaday #2	30°02.167	87°50.250
88	CVB Reef #42	30°08.715	87°33.065	205	Live Bait	30°02.072	87°51.636
89	CVB Reef #43	30°08.715	87°33.051	206	Live Bait II	30°01.377	87°51.301
90	CVB Reef #44	30°08.714	87°33.042	207	Live Bait at The Wharf	30°00.439	87°50.854
91	CVB Reef #45	30°08.707	87°33.016	208	Live Bait Catering	29°59.626	87°50.245
92	CVB Reef #46	30°08.717	87°33.000	209	Flora-Bama V	29°58.682	87°49.559
93	CVB Reef #47	30°08.714	87°32.981	210	Homeport Marina #11	29°58.785	87°48.312
94	CVB Reef #48	30°08.711	87°32.958	211	Homeport Marina #12	29°58.781	87°47.602
95	CVB Reef #49	30°08.710	87°32.936	212	Flora-Bama VI	29°57.890	87°47.566
96	CVB Reef #50	30°08.708	87°32.920	213	Danatana Reef	29°56.839	87°47.527
97	CVB Reef #51	30°08.709	87°32.905	214	Sam Solomon Memorial Reef	29°55.664	87°47.321
98	CVB Reef #52	30°08.708	87°32.891	215	McCarron Insurance Group #2	29°55.897	87°56.453
99	CVB Reef #53	30°08.707	87°32.880	216	Malouf #2	29°58.216	87°57.565
100	CVB Reef #54	30°08.707	87°32.866	217	Malouf #1	29°59.098	87°57.857
101	CVB Reef #55	30°08.706	87°32.858	218	Flora-Bama VII	29°59.854	87°58.228
102	CVB Reef #56	30°08.708	87°32.847	219	Flora-Bama VIII	30°00.650	87°58.693
103	CVB Reef #57	30°08.710	87°32.840	220	Legendary Marine #1	30°01.484	87°59.107
104	CVB Reef #58	30°08.702	87°32.821	221	Legendary Marine #2	30°02.399	87°59.606
105	CVB Reef #59	30°08.698	87°32.812	222	Legendary Marine #3	30°02.438	88°00.718
106	CVB Reef #60	30°08.699	87°32.815	223	Legendary Marine #4	30°01.567	88°00.581
107	DI Mary	30°08.690	87°32.802	224	Legendary Marine #5	29°58.720	87°59.204
108	DI Katherine	30°08.683	87°32.793	225	Legendary Marine #6	29°57.758	87°59.285
109	DI Trip	30°08.675	87°32.784	226	Century Boats #1	29°57.030	87°59.012
110	DI Alison	30°08.668	87°32.777	227	Century Boats #2	29°56.167	87°57.962
111	DI Anna	30°08.660	87°32.769	228	Century Boats #3	29°56.158	88°00.062
112	DI Allison	30°08.648	87°32.755	229	Century Boats #4	29°56.185	88°00.944
113	DI Richard	30°08.627	87°32.734	230	Century Boats #5	29°56.970	88°00.980
114	DI Lyndsay	30°08.615	87°32.721	231	Century Boats #6	29°57.659	88°01.149
115	Edgewater	30°08.606	87°32.710	232	Lester's Restaurant #1	29°58.462	88°01.183
116	Zarina Bella	30°08.601	87°32.703	233	Lester's Restaurant #2	29°59.193	88°02.266
117	Fish Camp Restaurant #5	30°08.597	87°32.696	234	Lester's Restaurant #3	29°59.800	88°02.713

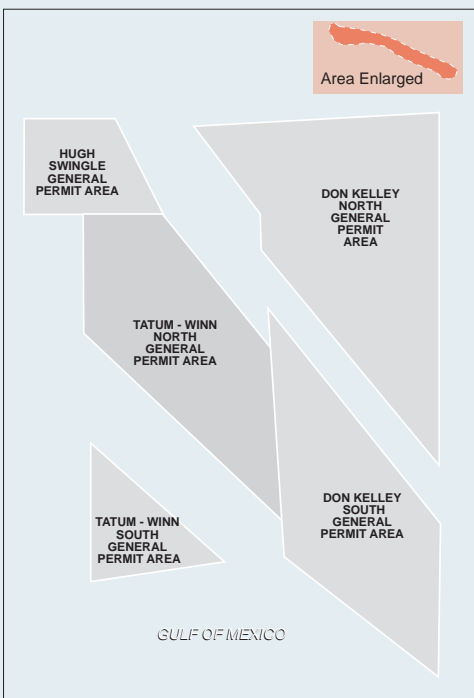
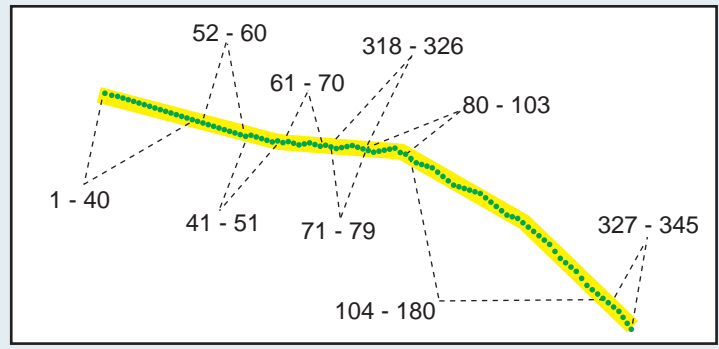
RSWC 2007 REEF MODULES - GPS COORDINATES..cont.

Reef #	Sponsor Name	Lat.	Long	Reef #	Sponsor Name	Lat.	Long
235	Lester's Restaurant #4	30°00.820	88°02.667	352	The Rod Room # 6	29°43.168	87°51.332
236	Lester's Restaurant #5	30°01.688	88°02.755	353	The Rod Room # 7	29°42.518	87°51.264
237	Lester's Restaurant #6	29°48.626	87°36.377	354	The Rod Room # 8	29°41.731	87°51.587
238	Wind Deductible	29°47.628	87°36.428	355	Top Gun Tackle #5	29°41.080	87°51.326
239	Policy Exclusions	29°46.736	87°36.426	356	Top Gun Tackle #6	29°40.247	87°51.361
240	Mediation	29°45.824	87°36.426	357	Tracey Thompson #3	29°39.539	87°51.234
241	Meyer Real Estate #1	29°44.879	87°36.428	358	Tracey Thompson #4	29°38.683	87°51.478
242	Meyer Real Estate #2	29°43.896	87°36.471	359	Turquoise Place #1	29°37.896	87°51.815
243	Meyer Real Estate #3	29°42.937	87°36.531	360	Turquoise Place #2	29°37.220	87°51.486
244	Meyer Real Estate #4	29°42.043	87°36.524	361	Turquoise Place #3	29°36.914	87°52.171
245	Dr. Robert H. Mudd	29°41.093	87°36.570	362	Turquoise Place #4	29°37.457	87°52.744
246	Gere Austill, Sr.	29°40.210	87°36.670	363	Reynolds Ready Mix - Walter Pope 4	29°38.286	87°52.986
247	Mo Fishin Bait & Tackle 1	29°40.934	87°37.268	364	Reynolds Ready Mix - Walter Pope 5	29°38.388	87°53.539
248	Slim	29°41.932	87°37.414	365	Reynolds Ready Mix - Walter Pope 6	29°39.245	87°53.484
249	Moyer Ford #1	29°42.900	87°37.736	366	Reynolds Ready Mix - Walter Pope 7	29°40.077	87°53.439
250	Moyer Ford #2	29°44.701	87°37.716	367	Reynolds Ready Mix - Harold Butts 4	29°40.908	87°53.438
251	Rachel Moyer	29°46.788	87°37.744	368	Reynolds Ready Mix - Harold Butts 5	29°42.310	87°53.123
252	Devin Moyer	29°45.153	87°38.840	369	Reynolds Ready Mix - Harold Butts 6	29°43.063	87°53.052
253	Rone Negus	29°44.338	87°38.872	370	Reynolds Ready Mix - Harold Butts 7	29°43.850	87°53.302
254	Coonie Negus	29°43.515	87°38.828	371	Vision Bank #5	29°44.685	87°53.298
255	Ocean Waves Sunglasses #1	29°42.697	87°38.886	372	Vision Bank #6	29°45.527	87°52.984
256	Ocean Waves Sunglasses #2	29°33.864	87°36.284	373	Vision Bank #7	29°46.396	87°52.933
257	Ocean Waves Sunglasses #3	29°33.160	87°35.742	374	Vision Bank #8	29°47.290	87°52.889
258	Ocean Waves Sunglasses #4	29°32.475	87°35.245	375	Water Ways Boat Sales	29°48.141	87°52.882
259	Orange Beach Auto & Marine #5	29°31.775	87°34.626	376	Down Under Dive Shop	29°48.754	87°54.456
260	Orange Beach Auto & Marine #6	29°31.051	87°34.140	377	West Marine #1	29°47.977	87°54.488
261	M. Radcliff, Sr.	29°30.263	87°33.667	378	West Marine #2	29°47.254	87°54.191
262	N.Q. Adams	29°29.524	87°33.146	379	Whitney Bank #1	29°46.530	87°54.509
263	Capt. Jim Cox	29°28.869	87°33.816	380	Whitney Bank #2	29°45.670	87°54.479
264	Palmer Bedsole	29°29.598	87°34.305	381	Whitney Bank #3	29°44.791	87°54.536
265	Mickey Fogle	29°30.284	87°34.750	382	Whitney Bank #4	29°43.910	87°54.584
266	Lynn Siler	29°31.059	87°35.263	383	Whitney Bank #5	29°42.275	87°54.611
267	Pete Frost	29°31.818	87°35.774	384	Whitney Bank #6	29°41.450	87°54.612
268	Brenda Bryant	29°32.548	87°36.197	385	Whitney Bank #7	29°40.601	87°54.636
269	Jack Cooper	29°33.268	87°36.614	386	Whitney Bank #8	29°26.372	87°51.476
270	Prudential Cooper	29°33.953	87°37.265	387	Wadeley 100	29°25.782	87°50.913
271	Outcast Marina Charter Dock (07)	29°33.915	87°38.125	388	Wadeley 200	29°25.480	87°51.810
272	Capt. Sonny Trimble Reef #2	29°33.230	87°37.976	389	Zac's Reef	29°26.058	87°52.445
273	Cindy's Fishing Hole (We'll See)	29°32.435	87°37.724	390	Mary's Reef	29°26.633	87°53.096
274	Outcast Marina #4	29°32.152	87°36.893	391	Zeke's Charter Fleet #1	29°27.209	87°53.810
275	Penn Reels #1	29°31.359	87°36.665	392	Zeke's Charter Fleet #2	29°27.774	87°54.604
276	Penn Reels #2	29°30.588	87°36.196	393	Zeke's Charter Fleet #3	29°28.388	87°55.276
277	Penn Reels #3	29°29.874	87°35.769	394	Zeke's Charter Fleet #4	29°28.977	87°55.963
278	Penn Reels #4	29°29.072	87°35.423	395	Zeke's Charter Fleet #5	29°29.286	87°56.822
279	Penn Reels #5	29°28.419	87°36.046	396	Zeke's Charter Fleet #6	29°29.976	87°56.945
280	Penn Reels #6	29°29.211	87°36.445	397	Zeke's Charter Fleet #7	29°30.375	87°57.779
281	PBR/Voyagers	29°29.953	87°36.786	398	Zeke's Charter Fleet #8	29°31.047	87°58.344
282	PBR/David Jackson	29°30.774	87°37.293	399	Zeke's Charter Fleet #9	29°31.706	87°58.874
283	PBR/John Moloney	29°31.607	87°37.702	400	Zeke's Charter Fleet #10	29°32.269	87°59.320
284	PBR/Greg Perryman	29°32.042	87°38.465	401	Zeke's Charter Fleet #11	29°33.057	88°00.014
285	Tracey Thompson #1	29°32.857	87°38.833	402	Zeke's Charter Fleet #12	29°33.746	88°00.500
286	Tracey Thompson #2	29°33.796	87°39.090	403	Zeke's Charter Fleet #13	29°32.089	88°00.212
287	Capt. Carl Raffield Reef #1	29°34.018	87°40.245	404	Zeke's Charter Fleet #14	29°31.465	87°59.382
288	Capt. Carl Raffield Reef #2	29°33.344	87°40.284	405	Zeke's Charter Fleet #15	29°30.553	87°58.985
289	Capt. Gene Raffield Reef #1	29°32.758	87°39.791	406	Zeke's Charter Fleet #16	29°29.682	87°58.101
290	Capt. Gene Raffield Reef #2	29°32.099	87°39.394				
291	Randal & Colby Simmons #1	29°31.447	87°38.798				
292	Randal & Colby Simmons #2	29°30.829	87°38.397				
293	RE/MAX of Foley #1	29°29.970	87°38.017				
294	RE/MAX of Foley #2	29°29.216	87°37.575				
295	RE/MAX of Gulf Shores #6	29°28.431	87°37.058				
296	RE/MAX of Gulf Shores #7	29°28.010	87°38.012				
297	RE/MAX of Orange Beach #1	29°28.880	87°38.389				
298	RE/MAX of Orange Beach #2	29°29.730	87°38.999				
299	RE/MAX of Orange Beach #3	29°30.537	87°39.358				
300	RE/MAX of Orange Beach #4	29°31.304	87°39.816				
301	Reel Surprise Charters #1	29°32.016	87°40.309				
302	Reel Surprise Charters #2	29°32.681	87°40.874				
303	Reel Yacht Sales & Service #1	29°33.293	87°41.497				
304	Reel yacht Sales & Service #2	29°34.057	87°41.469				
305	Romar Marina #1	29°33.971	87°42.501				
306	Romar Marina #2	29°34.017	87°59.975				
307	Specchio Reef	29°33.359	87°59.362				
308	Skippy Reef	29°32.551	87°58.698				
309	Sam's Spot #8	29°31.881	87°57.932				
310	Sam's Spot #9	29°31.175	87°57.244				
311	Sam's Spot #10	29°30.476	87°56.461				
312	Sam's Spot #11	29°29.790	87°55.772				
313	Sam's Spot #12	29°29.107	87°55.080				
314	Sam's Spot #13	29°28.611	87°54.315				
315	Sam's Spot #14	29°27.978	87°53.549				
316	Sam's Spot #15	29°27.404	87°52.834				
317	SanRoc Cay Marina	29°26.760	87°52.164				
318	Bear Point Marina Reef #2	30°08.732	87°33.340				
319	Sandy Wade Reef #3	30°08.731	87°33.324				
320	Carolyn Wade	30°08.730	87°33.312				
321	Saunders Yachtworks #1	30°08.729	87°33.309				
322	Saunders Yachtworks #2	30°08.729	87°33.306				
323	Saunders Yachtworks #3	30°08.723	87°33.266				
324	Saunders Yachtworks #4	30°08.720	87°33.230				
325	The Shrimp Basket	30°08.722	87°33.220				
326	Mikee's Seafood Restaurant	30°08.717	87°33.202				
327	Spence Reef	30°07.930	87°31.932				
328	Cahoon Reef	30°08.016	87°32.048				
329	S. Baldwin Reg. Med. Center #1	30°08.011	87°32.043				
330	S. Baldwin Reg. Med. Center #2	30°08.003	87°32.027				
331	Lauren S Reef	30°08.003	87°32.027				
332	Aulbree H Reef	30°07.997	87°32.021				
333	Victoria A Reef	30°07.985	87°32.009				
334	Samantha M Reef	30°07.977	87°31.999				
335	Sportsman's Marine in Fairhope #3	30°07.970	87°31.992				
336	Sportsman's Marine in Fairhope #4	30°07.962	87°31.985				
337	Sportsman's Marine in Fairhope #5	30°07.953	87°31.972				
338	Sportsman's Marine in Fairhope #6	30°07.951	87°31.968				
339	"Sunny" 105.7-FM #1	30°07.947	87°31.958				
340	"Sunny" 105.7-FM #2	30°07.941	87°31.950				
341	"Sunny" 105.7-FM #3	30°07.906	87°31.921				
342	Kathryn & Lee Hagan	30°07.902	87°31.923				
343	Tacky Jack's Bushwacker	30°07.881	87°31.939				
344	Tacky Jack's Farmers Omelet	30°07.863	87°31.952				
345	Tacky Jack's Mexican Garbage	30°07.849	87°31.947				
346	Tacky Jack's Bloody Mary	29°48.058	87°51.029				
347	Reefmaker - Miles	29°47.250	87°51.009				
348	Reefmaker - Liam	29°46.389	87°51.046				
349	Reefmaker - DeDe	29°45.084	87°51.082				
350	Reefmaker - Turgeau	29°44.663	87°51.151				
351	The Rod Room # 5	29°44.064	87°50.733				

BALDWIN COUNTY TROLLING CORRIDOR AREA



Note: A total of 208 Red Snapper World Championship (RSWC) concrete reef modules from the 2007 deployment are located in the Baldwin County Trolling Corridor General Permit Area. Module numbers 1 through 180 and 318 through 345 are located at approximately 100 foot intervals along the entire length of the corridor. **The DGPS coordinates and sponsorship information for these reefs is found on pages 11 and 12 of this brochure.**

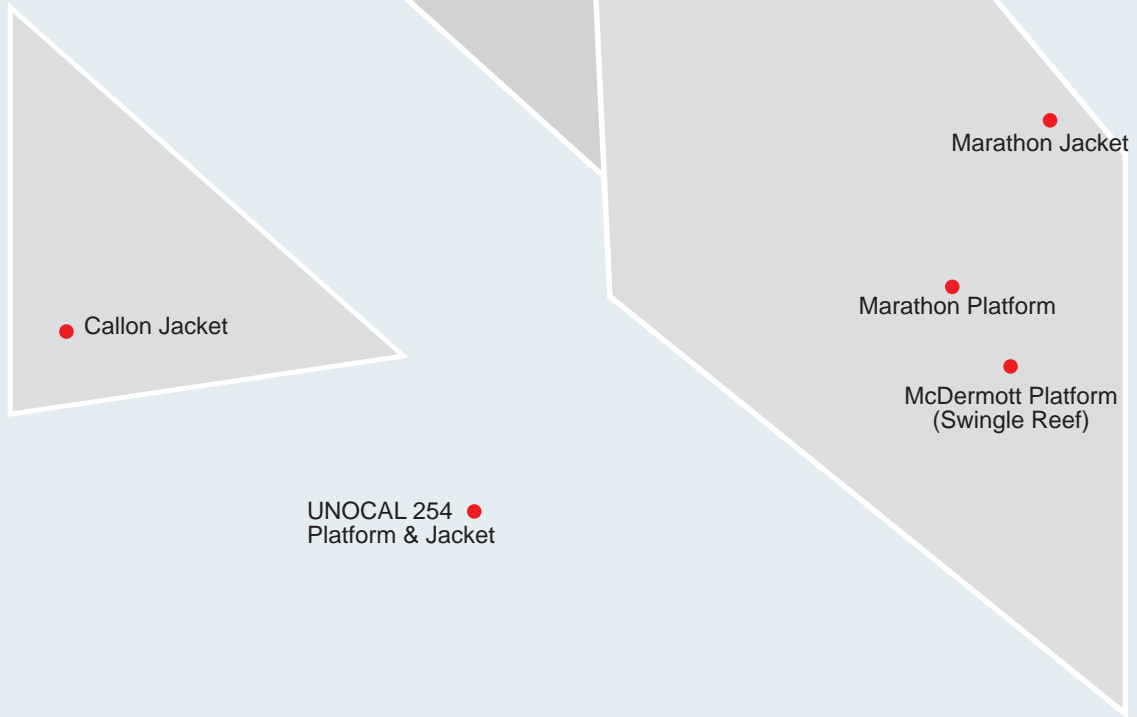


Allen Reef	30°07.835	87°31.790
Perdido Pass Bridge	30°08.446	87°33.956
Perdido Pass Bridge	30°08.565	87°34.270
Gulf State Park Pavilion 1	30°07.737	87°32.059
Gulf State Park Pavilion 2	30°08.701	87°32.814
Gulf State Park Pavilion 3	30°08.749	87°33.633
Gulf State Park Pavilion 4	30°08.897	87°32.323
Chamber 1	30°13.729	87°32.928
Chamber 2	30°13.760	87°32.918
Chamber 3	30°13.733	87°32.941
Chamber 4	30°13.768	87°32.946
Jim Robbins	30°08.981	87°34.341
Whitney Bank	30°08.878	87°34.256
Harry Allen Memorial	30°09.002	87°34.196
Doc of the Bay	30°08.951	87°34.119
Mexico Rock	30°08.976	87°34.113
Sam's Spot	30°08.906	87°34.001
Armand Annan Memorial	30°08.897	87°33.972
Bon Secour Equipment	30°08.768	87°33.852
Hazel's Reef	30°08.767	87°33.802
Kaiser Realty	30°08.732	87°33.638
Coleman Marine	30°08.781	87°33.478
J & M Tackle	30°08.708	87°33.338
Outcast Charter Docks	30°08.700	87°33.261
Regions Bank	30°08.640	87°33.036
Blue Water	30°08.519	87°32.853
Fred's Place	30°08.592	87°32.726
Callaway	30°08.706	87°32.774
First Gulf Bank	30°08.752	87°32.692
Bowen Family	30°08.867	87°32.592
Liberty Linens	30°08.758	87°32.503
Plantation Resort	30°08.207	87°32.376
SouthTrust Bank	30°08.006	87°32.341
Flora-Bama	30°07.775	87°32.154
Bottom Line	30°07.934	87°32.104
E.M.C	30°07.860	87°31.978
Ray Callaway Memorial	30°07.908	87°31.913
Zeke's Landing Marina	30°08.732	87°33.560

RSWC* (Red Snapper World Championship)
Visit: www.redsnapperworldchampionship.com

GAS PLATFORMS AND JACKETS

GULF OF MEXICO



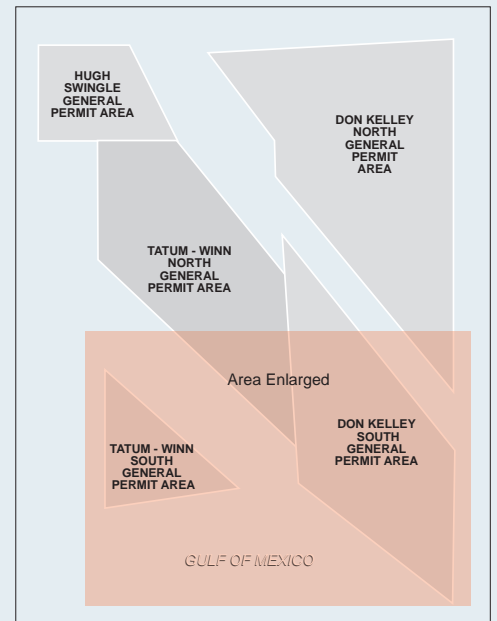
Swingle Reef	29°25.160 - 87°35.600
Marathon Reef	29°26.895 - 87°36.990
Marathon Jacket	29°31.007 - 87°34.705
Unocal 254	29°21.750 - 87°48.330
Callon Jacket	29°26.000 - 87°58.500



UNOCAL #254
Deployment



State Record Red Snapper
Mr. Melvin Dunn - 44 lbs. 12 oz.



INSHORE FISHING REEFS

Mobile Bay's ample surface area – about 450 square miles – and its shallow waters... coupled with the influx of copious amounts of freshwater and nutrients from rivers and tributaries, produce some of the very best saltwater gamefish populations to be found anywhere. Speckled trout and white trout, redfish and black drum, sheepshead and flounder all abound in local waters. Head to one of Alabama's 21 inshore artificial fishing reefs and there you will find an inshore fishing experience that is second to none on the Gulf Coast.

Prior to the construction of formal fish attractors in Mobile Bay, knowledgeable local fishermen understood and appreciated the community relationship between the Bay's prolific oyster reefs and exploitable fish populations. First, there's something structurally different about an oyster reef from the surrounding sand and mud bottoms. Oyster reefs are usually raised ever so slightly above the surrounding aquatic terrain, providing linear habitat and home range anchors for schools of predatory fish. This reef structure would attract schools of fish even if devoid of biological activity. But an oyster reef is anything but devoid of life. In addition to the oysters, dozens of types of aquatic invertebrates call the "nooks and crannies" of the oyster reef home, filling each biological niche. Barnacles, mussels, worms and bryozoans, along with a variety of crabs and shrimp abound, taking advantage of the large variety of available food supported by the oyster reef ecosystem. And where such abundant food is available, you find gamefish...and lots of them!

In past geologic history, when the sea stretched much farther inland than today, oyster and marine fish populations thrived in areas which are now human habitat. As the seas retreated, so did the oysters and fish, slowly moving southward out of what is now the Mobile Delta. Good oyster habitat, hard bottom and medium salinity, continued to move southward as sea level fell and river discharge increased. This progression of natural events created a chain of oyster reefs all the way down both sides of the Bay, and left behind vast deposits of shell. Many of these old reefs continued to support marginal populations of oysters, but typically only enough for very localized harvest and marketing strategies. Man's agricultural activities upstate dumped heavy loads of sediment into the waters of the Bay, and rapid human encroachment into the Bay area coupled with dredging and channelization changed the flow patterns of the Bay, impacting most of the middle bay and particularly the eastern shore reefs, including the once prolific reefs in Bon Secour Bay.

For the Alabama Marine Resources Division, enhancement of these relict oyster areas seemed logical and responsible. An idea was developed to ring marginally productive oyster reefs in the bay with some form of hard, durable material, and fill the areas with oyster cultch such as shell or crushed limestone for vertical relief. All that was needed was the appropriate material, something hard, cheap, and durable. It was believed that such an enhancement could help revitalize oyster production in these relict reef areas, possibly resuscitating an oyster industry which made the Bon Secour area famous in days past. Additionally, the agency anticipated improved sportfishing at the sites due to increased vertical relief and biological diversity. The agency did not anticipate just how good the fishing would become!

In the spring and summer of 1996 various concrete rubble became available from the demolition of the old Mobile Bay Causeway bridges (Tensaw, Blakely, and Apalachee rivers). The Marine Resources Division with the help of local contractors and conservation groups decided to build fish attractors with the material. This was precisely the material needed for the ringing of the oyster reefs that had earlier been envisioned by the agency. Now was the time to move ahead with what has since proven to be the most comprehensive fishing enhancement project in the history of the Bay and the finest example of inshore fishery enhancement in the nation. Your purchase of motorboat fuel and fishing tackle helps pay for these construction efforts through the Wallop-Breaux funding program.

Refer to the map within this document. Shellbank, Denton, Grey Cane and Fish River reefs are dual purpose sites serving as both fishing reefs and as experimental oyster reef rehabilitation areas. These three areas received oyster cultch material (crushed limestone) during the summer of 1998 and fall of 1999. All of these sites are producing spectacular catches of speckled trout and redfish. The water depth above all the construction material is approximately 3.5 feet at mean low water (MLW). Anglers should exercise caution at all times when approaching these sites, but particularly during times of extreme low (winter) tidal conditions.

The Marine Resources Division and its industry and public partners are proud to be involved in such tremendous enhancement of our oyster and sportfish resources in the Mobile Bay area. The agency is committed to continuing this trend, sprinkling great fishing areas and, where possible, enhanced oystering areas within the reach of even the most modestly outfitted angler.

ALABAMA'S INSHORE FISHING REEFS



Gas Platform Reefs

- ExxonMobil 76A-AUX
30°15.250' - 88°03.120'
- Alex Maisel Memorial
30°17.802' - 88°02.731'
- ExxonMobil 63AB
30°17.511' - 87°59.739'
- Legacy Platform
30°16.823' - 87°58.080'
- Legacy Satellite 615-1
30°16.837' - 87°59.104'
- Legacy Satellite 615-3
30°16.012' - 87°58.429'
- Legacy Satellite 615-4
30°17.285' - 87°57.326'

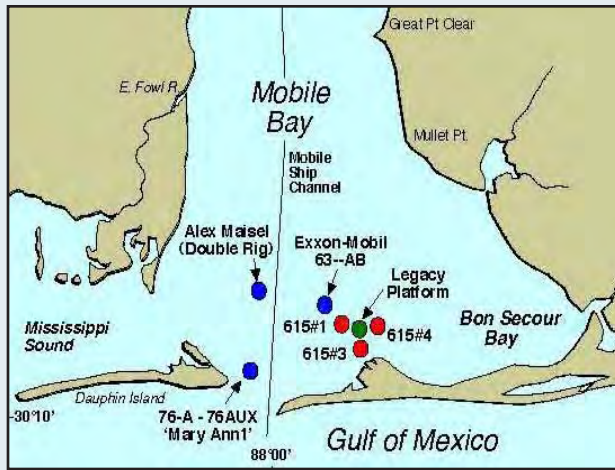
A total of 30 inshore fishing reefs are located within Mobile and Bon Secour Bays, Mississippi Sound, and the Perdido System. Concrete bridge materials, culvert pipes, concrete roof panels, oyster shells and crushed limestone were utilized as reef materials. Five reefs are experimental dual-purpose sites, providing excellent inshore fishing while improving oyster production on nonproductive relict oyster reefs. In addition, seven gas production platforms in lower Mobile Bay have been enhanced with limestone rock fish attracting pads.



Existing Reefs

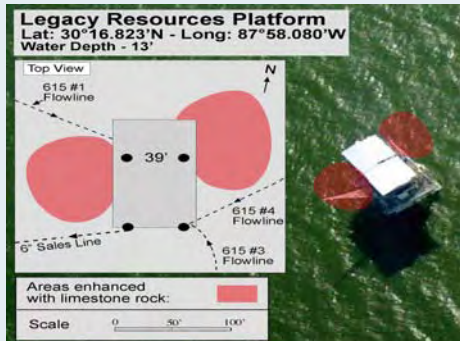
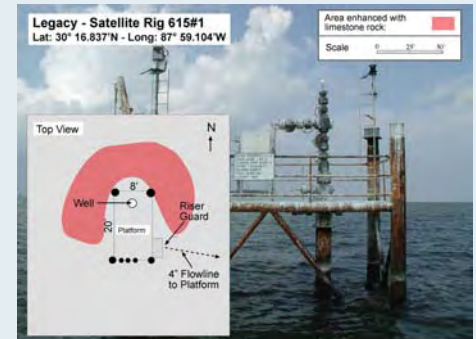
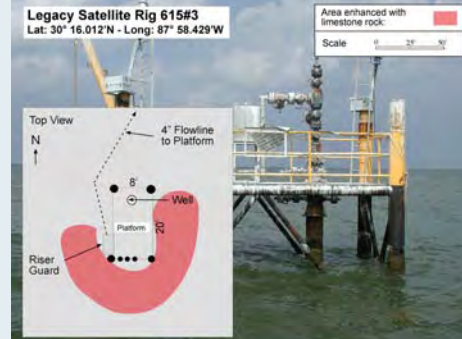
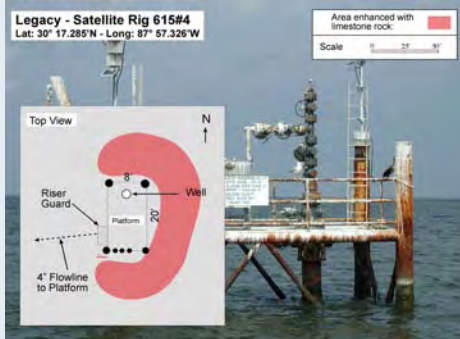
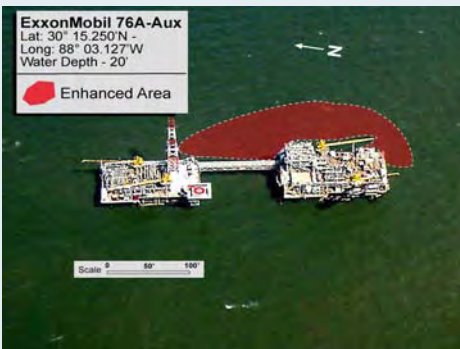
- | | |
|---|---|
| Battles Wharf Reef
30°29.634' - 87°55.918' | Fish River Reef
30°19.705' - 87°49.830' |
| Bayou Cour Reef
30°17.945' - 87°48.427' | Ft. Morgan Barge Reef
30°14.002' - 88°01.226' |
| Bayou St. John Reef
30°17.561' - 87°31.960' | Lynn Dent Boykin Reef
30°16.390' - 88°05.770' |
| Bender - Austal Reef
30°31.642' - 88°02.877' | Ono Island Reef
30°18.167' - 87°29.404' |
| Brookley Hole Reef
30°37.965' - 88°03.119' | P. Grey Cane, Jr. Reef
30°27.460' - 87°55.940' |
| "Buddy" Beiser Reef
30°35.269' - 87°57.002' | Rockpile
30°20.011' - 87°29.912' |
| CCA #1
30°14.162' - 88°17.607' | Ross Point Reef
30°19.436' - 87°30.668' |
| CCA #2
30°14.411' - 88°16.380' | Shellbank Reef
30°15.716' - 87°51.682' |
| CCA #3
30°14.709' - 88°14.508' | Shrimboat Reef
30°18.332' - 88°16.394' |
| Choctaw Pass Reef
30°39.750' - 88°01.500' | Upper Wreck
30°23.230' - 87°53.111' |
| Dell Williamson Reef
30°36.020' - 87°55.060' | Zundel's Landing
30°28.700' - 87°55.600' |
| Denton Reef
30°24.531' - 88°03.989' | |

GAS PLATFORM FISHING ENHANCEMENT - MATERIAL LOCATIONS



2003 Deployment (Phase I)
 Alex Maisel Memorial Reef – 30°17.802' - 88°02.731'
 ExxonMobil production platform 63 AB – 30°17.511' - 87°59.739'
 ExxonMobil production platform 76 A – 30°15.250' - 88°03.120'

2005 Deployment (Phase II)
 Legacy Resources Platform – 30°16.823' - 87°58.080'
 Legacy Resources Satellite Rig 615-1 – 30°16.837' - 87°59.104'
 Legacy Resources Satellite Rig 615-3 – 30°16.012' - 87°58.429'
 Legacy Resources Satellite Rig 615-4 – 30°17.285' - 87°57.326'



Gas Platform Fishery Habitat Enhancement Program

Substrate stabilization materials originally placed around gas platform locations in lower Mobile Bay once provided excellent benthic invertebrate habitat, supporting large populations of predatory fishes. Years of storms and propeller wash have covered or moved these materials, and fishing success was declining noticeably around the platforms.

Crushed limestone aggregate provides an ideal substrate for the settlement and growth of oysters and other benthic invertebrates. A complex ecological web including baitfishes and recreationally important predatory fishes will be established and maintained throughout the life of the material on the bottom. Local recreational fisheries associated with these gas platforms will benefit as a direct result of this work.

These four additions complete this phase of MRD's Gas Platform Fishery Habitat Enhancement Program and will afford excellent fishing around these easily accessible gas platforms, adding to the three platforms similarly enhanced in 2003.



ALABAMA MARINE RESOURCES DIVISION

Dauphin Island Office: 251-861-2882

Gulf Shores Office: 251-968-7576

www.outdooralabama.com/fishing/saltwater

As a recreational boater and fisherman I recognize that:

The waters of the Gulf of Mexico and its associated bays, sounds, lakes and tributaries are valuable public resources entrusted to the stewardship of all who enjoy them. A pollution-free aquatic environment is essential to the health and productivity of coastal fisheries and to high quality recreational fishing and boating experiences.

Trash deliberately discarded or carelessly lost overboard is harmful to marine life and shorebirds, creates a blight on the shorefront, and threatens the safe, efficient operation of boats and equipment.

Waterborne debris in the Gulf of Mexico is detrimental to all Gulf states and other countries that share the waters of the Gulf.

BOATER'S AND FISHERMAN'S PLEDGE FOR A CLEAN GULF

I PLEDGE:

- To transport to shore, for proper disposal, all trash generated aboard my boat, especially plastic, glass, and metal;
- To make every effort to prevent accidental loss of food and drink containers, fishing gear, and other debris from my boat;
- To retrieve for proper disposal onshore, plastic refuse, cans, and other man-made debris I find floating in navigable waters; and
- To encourage fellow boaters and fishermen to "Take Pride in the Gulf of Mexico."



DISCLAIMER

This product is intended for use solely as a reference guide to Alabama fishing. It is not intended for navigational use. This agency makes no warranty, expressed or implied, with respect to the accuracy or completeness of the information contained in this document. Furthermore, this agency assumes no liability with respect to the use of, or damages resulting from the use of any information contained in this document.

ACKNOWLEDGMENTS

Sportfish Restoration Funds administered by the U. S. Fish and Wildlife Service were utilized in the preparation of this document under grant number F-101.

Photos: Marine Resources Division

Fish Illustrations: © Diane Rome Peebles - www.dianepeebles.com

The Department of Conservation and Natural Resources does not discriminate on the basis of race, color, gender, religion, national origin, age or disability in its hiring or employment practices, nor in admission to, access to, or operations of its programs, services or activities. This publication is available in alternative formats, upon request.