



MUSEI CAPITOLINI | Piazza del Campidoglio

OPEN EVERY DAY FROM 9.30 AM TO 7.30 PM LAST ADMISSION ONE HOUR BEFORE CLOSING TIME

CAPITOLINE BOOKSHOP

Palazzo dei Conservatori

CLOAKROOM free

COFFEE SHOP

Palazzo Caffarelli P. le Caffarelli, 4
EDUCATIONAL ACTIVITIES group and school tours reservation required
+39 060608

VIDEOGUIDE available for adults

AUDIOGUIDE available for kids

SERVICES CHARTER available on the website

MIC CARD (for Rome's residents and uni- versity students) and **ROMA PASS** on sale at the ticket office



www.museicapitolini.org

Follow Sistema Musei di Roma Capitale on



#MiCRoma #MiCRomaCard



infoline **+39 060608** enjoy Rome!

060608 chiama, clicca e vivi Roma!



MUSEI CAPITOLINI

The Musei Capitolini date from 1471, when Pope Sixtus IV donated to the People of Rome a group of bronze statues that until then had been at the Lateran. Successive popes enlarged the original core collection with works found during excavations in and around Rome. Some were transferred from the Vatican; others, such as the Albani Collection, were purchased specifically for this museum. Around the middle of the 18th century, Pope Benedict XIV founded the Capitoline Picture Gallery. At the end of the 19th century, soon after Rome's proclamation as Italy's Capital (1870), many ancient art pieces dug out in excavations carried out for the creation of the City's new districts were added to the museum's collections. The museums' collections are displayed in two of the three buildings that enclose Piazza del Campidoglio - Palazzo dei Conservatori and Palazzo Nuovo (the third is Palazzo Senatorio). These two buildings are linked by an underground tunnel which houses the Lapidary Gallery and leads into the ancient Tabularium (beneath Palazzo Senatorio), whose monumental arches overlook the Roman Forum. The Palazzo Nuovo houses the collections of ancient sculptures assembled in the past by the Roman nobility; their arrangement has remained mostly unchanged since the 18th century. They include a famous collection of busts of ancient philosophers and Roman emperors, the statue of the Dying Gaul, the Capitoline Venus and the reclining male statue popularly known as "Marforio", which dominates the courtyard. The Conservators'Apartment was the original architectural core of the Palazzo dei Conservatori; it is adorned with splendid frescoes depicting the history of Rome. The stately atmosphere of these rooms is heightened by the ancient Roman bronzes on display: the Capitoline She-Wolf, the Boy With Thorn and the Capitoline Brutus. On the first floor of the palace, a large built glass-roofed hall houses the ancient equestrian statue of Marcus Aurelius which once stood in Piazza del Campidoglio, and the imposing remains of the Temple of Jupiter. Part of this hall is devoted to the most ancient period of the Capitoline Hill's history, spanning from its earliest settlement to the erection of the temple, and including displays of the finds from recent excavations. The rooms adjoining the glass hall contain artworks from the ancient gardens (horti) on the Esquiline Hill. The galleries connecting the Marcus Aurelius hall to the apartments of Palazzo dei Conservatori house the Castellani Collection, an example of collecting practices in the 19th century. On the second floor, the Capitoline Picture Gallery's works are arranged in chronological order from the late Middle Ages to the 18th century. They include two paintings by Caravaggio, a very large canvas by Guercino and a good number of works by Guido Reni and Pietro da Cortona. Palazzo Clementino-Caffarelli hosts the Capitoline Coin and Medal Collection, with a great number of coins, medals, gems and jewels on display. A separate area is reserved for temporary exhibitions. The rooms on the ground floor of Palazzo Caffarelli - the so-called Villa Caffarelli, already seat of the Mussolini Museum of Modern Art and then of the "Museo Nuovo" - have been recently reopened after a closure lasting more than 60 years at the end of an important restoration and redevelopment that also involved the garden with its fountains. The rooms of the Villa, intended as a new exhibition space of the Capitoline Museums, rest largely on the foundation blocks in "cappellaccio" of the Temple of Capitoline Jupiter.



PALAZZO DEI CONSERVATORI

- FLOOR 0**
- 01 Courtyard. Marble acrolith of Constantine
- 02 I Grand Staircase Landing. Historical reliefs
- 03 II Grand Staircase Landing. Sixtus IV inscription



FLOOR 1

Conservatori Apartment

- 04 Hall of the Horatii and Curatii. Bernini: Pope Urban VIII. Cavalier d'Arpino: frescoes
- 05 Hall of the Captains. Tommaso Laureti: frescoes
- 06 Hall of Hannibal. Jacopo Ripanda: frescoes
- 07 Chapel. Marcello Venusti: altarpiece
- 08 Hall of Triumphs. Spinario, Camillus, Capitoline Brutus
- 09 Hall of the She-wolf Capitoline "Fasti"
- 10 Hall of the Geese. Bernini: bust of Medusa
- 11 Hall of the Tapestries. Roman manufacture of San Michele: tapestries
- 12 Hall of the Eagles. Diana Ephesina



Palazzo dei Conservatori Museum

- 13 Hall I Castellani. Aristonothos krater
- 14 Hall II Castellani. Etruscan dignitary
- 15 Hall III Castellani. Horse and bull in bronze, Capitoline "Tensa"
- 16 Exedra of Marcus Aurelius. Equestrian statue of Marcus Aurelius, Lion biting a horse, Bronze acrolith of Constantine



Palazzo dei Conservatori Museum

- 17 Area of the Temple of Jupiter. Hercules in gilded bronze, terracotta from the archaic Sant'Omobono temple
- 18 Area of the Temple of Jupiter. Multimedia area
- 19, 20 Halls of the Maecenas' Horti. Demeter
- 21 Halls of the Maecenas' Horti. Marsyas



- 22, 23 Halls of the Horti Tauriani and Vettiani. Relief with landscape, sarcophagus with Calydonian hunt
- 24 Gallery of the Horti. Krater with the wedding of Paris and Helen
- 25, 26, 27, 28 Halls of the Horti Lamiani. Esquiline Venus, gilded bronze band with gems
- 29, 30 Halls of Modern "Fasti". Dionysian sarcophagus
- 31 Hall of the Middle Ages. Charles I of Anjou, banner of Saint George
- 32 III Grand Staircase Landing. Panels in "opus sectile" from the Basilica of Giunio Basso



FLOOR 2

Capitoline Picture Gallery

- 33 Hall I. Central Italy from the Middle Ages to the 16th century
- 34 Hall II. The sixteenth century in Ferrara
- 35 Hall III. The sixteenth century in Venice
- 36 Hall IV. Aspects of the 17th century in Rome
- 37 Hall V. Bologna and Emilia, 16th and 17th centuries
- 38 Hall VI. Bologna, Guido Reni and painters of the 17th century
- 39 Santa Petronilla Hall. The great painting in 17th century Rome from Caravaggio to Guercino
- 40 Pietro da Cortona Hall. Pietro da Cortona and the birth of Baroque painting
- 41 Cini Gallery. Examples of European painting, Van Dyck, Velázquez, Van Wittel



TABULARIUM - VIEW OVER THE ROMAN FORUM

- FLOOR -1**
- 47 Lapidary Gallery. Cinerary aedicule depicting the deceased
- 48 Temple of Veiovis
- 49 Tabularium. Colossal statue of a male divinity, access ramp to the Salara
- 50 Tabularium Gallery. View over the Roman Forum
- 51 Hall of the Executioner



PALAZZO NUOVO

FLOOR 1

- 59 Gallery. Hercules, Drunken old woman, Gladiator by Monnot
- 60 Hall of the Doves. Mosaic of the Doves
- 61 Cabinet of Venus. Capitoline Venus
- 62 Hall of the Emperors. Statue oh Helen
- 63 Hall of the Philosophers. Frieze from San Lorenzo
- 64 Main Hall. The Furietti Centaurs
- 65 Hall of the Faun. Faun in rosso antico
- 66 Hall of the Gaul. Dying Gaul, Cupid and Psyche



- PALAZZO CLEMENTINO - CAFFARELLI**
- 42 Capitoline coin and medal collection. Via Alessandrina treasure
- 43 Second Hall. Guy collection
- 44 Santarelli collection
- 45 Saint Peter Hall. Fresco depicting the miracle of Saint Peter
- 46 Hall of the Fronton. Sculptures from the fronton of the temple in via San Gregorio



PALAZZO NUOVO

FLOOR 0

- 52 Atrium. Colossal Minerva
- 53 Courtyard. Marforio
- 54 Egyptian Hall. Sphinx of Amasis
- 55, 56, 57 Ground Floor Halls. Sarcophagus of Monte del Grano
- 58 Small Grotto



MUSEI CAPITOLINI



- Entrance / Exit
- Entrance to Coffee Shop without museum ticket and Museum offices
- Ticket office
- Cloackroom
- Capitoline Bookshop
- Restrooms
- Lift
- Lift on call for visitors with disabilities +39 067102071
- Stairway
- Coffee Shop
- Panoramic terrace

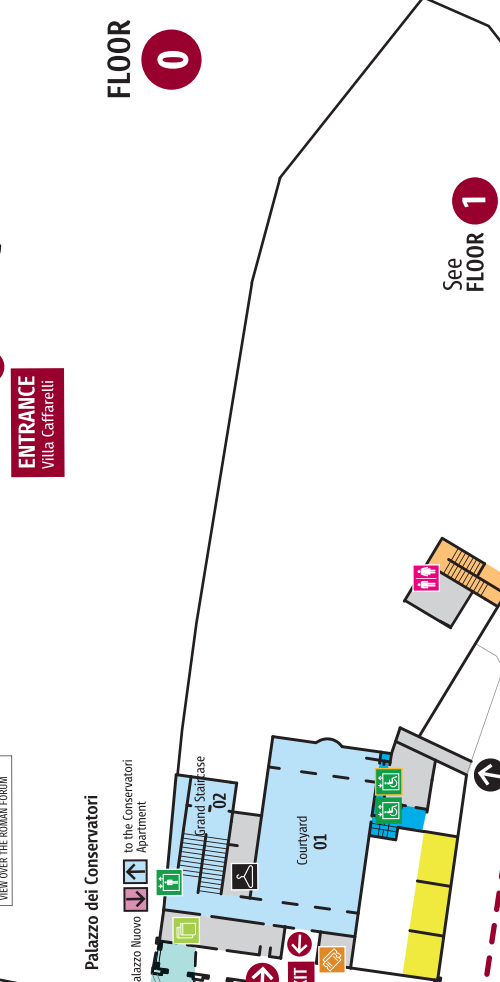
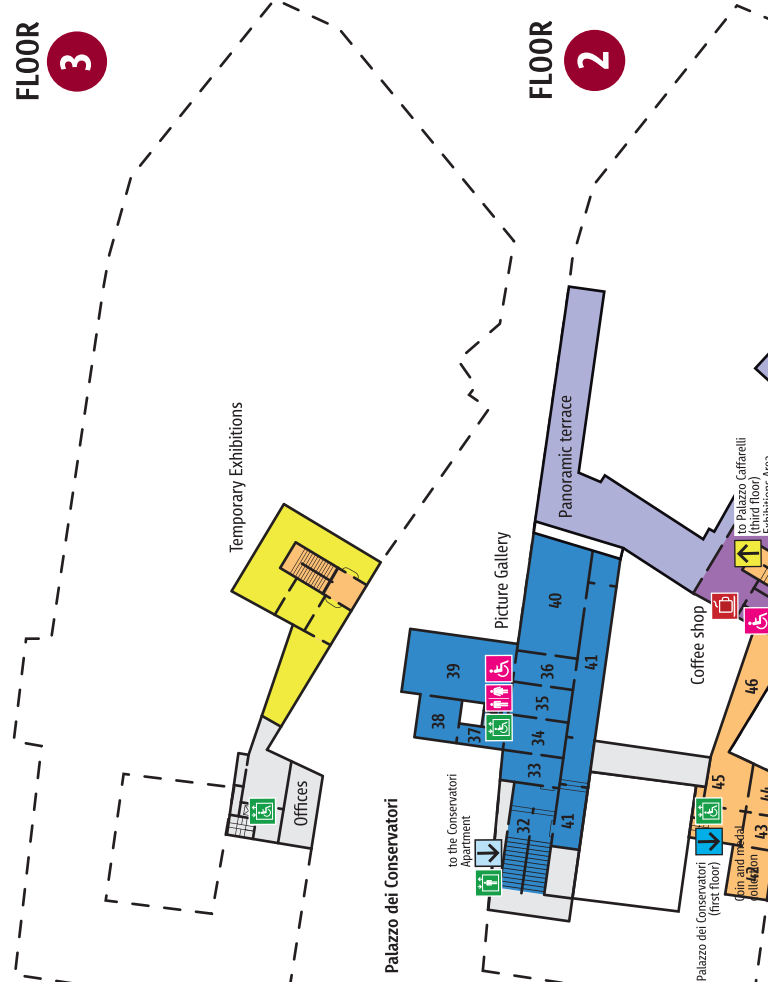


FLOOR 3

FLOOR 2

FLOOR 1

FLOOR 0



PALAZZO DEI CONSERVATORI

FLOOR 0

- 01 Courtyard
- 02 I Grand Staircase Landing
- 03 II Grand Staircase Landing

Temporary exhibitions

FLOOR 1

- Conservatori Apartment**
- 04 Hall of the Horatii and Curiatii
- 05 Hall of the Captains
- 06 Hall of Hannibal
- 07 Chapel
- 08 Hall of Triumphs
- 09 Hall of the She-wolf
- 10 Hall of the Geese
- 11 Hall of the Tapestries
- 12 Hall of the Eagles

Palazzo dei Conservatori Museum

- 13 Hall I Castellani
- 14 Hall II Castellani
- 15 Hall III Castellani
- 16 Exedra of Marcus Aurelius
- 17, 18 Area of the Temple of Jupiter
- 19, 20, 21 Halls of the Maecenas' Horti
- 22, 23 Halls of the Horti Tauriniani and Vettiani
- 24 gallery of the Horti
- 25, 26, 27, 28 Halls of the Horti Lamiani
- 29, 30 Halls of Modern "Fasti"
- 31 Hall of the Middle Ages
- 32 III Grand Staircase Landing

FLOOR 2

Capitoline Picture Gallery

- 33 Hall I
- 34 Hall II
- 35 Hall III
- 36 Hall IV
- 37 Hall V
- 38 Hall VI
- 39 Santa Petronilla Hall
- 40 Pietro da Cortona Hall
- 41 Cini Gallery

PALAZZO CLEMENTINO - CAFFARELLI

FLOOR 2

- 42 Capitoline coin and medal collection
- 43 Second Hall
- 44 Santarelli collection
- 45 Saint Peter Hall
- 46 Hall of the Fronton

FLOOR 3

Temporary exhibitions

TABULARIUM - VIEW OVER THE ROMAN FORUM

- 47 Lapidary Gallery
- 48 Temple of Veiovis
- 49 Tabularium
- 50 Tabularium Gallery
- 51 Hall of the Executioner

PALAZZO NUOVO

FLOOR 0

- 52 Atrium
- 53 Courtyard
- 54 Egyptian Hall
- 55, 56, 57 Ground Floor Halls
- 58 Small Grotto

FLOOR 1

- 59 Gallery
- 60 Hall of the Doves
- 61 Cabinet of Venus
- 62 Hall of the Emperors
- 63 Hall of the Philosophers
- 64 Main Hall
- 65 Hall of the Faun
- 66 Hall of the Gaul

VILLA CAFFARELLI

Temporary exhibitions

FLOOR 3

Temporary exhibitions

FLOOR 2

FLOOR 1



CHOOSE AN ITINERARY

All the itineraries begin after the metal detector

The coloured thematic itineraries are indicated on dedicated supports in every room



The indications show the next room for the different itineraries

The works pertaining to each itinerary are indicated with their colour on the room panels, or near the individual pieces



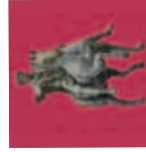
THE COLLECTIONS

99 ARTWORKS
Long itinerary
about 2h and 50 minutes



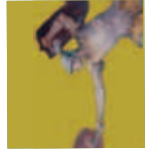
HISTORY AND MYTH

73 ARTWORKS
Medium plus itinerary
about 1h and 50 minutes



MEN AND GODS

50 ARTWORKS
Medium itinerary
about 1h and 30 minutes



ARMS AND POWER

30 ARTWORKS
Short itinerary
about 50 minutes

The route includes all the most significant works of the Capitoline collections and intends to offer a complete and articulated presentation of the history of the oldest museum in the world.

Through the Capitoline works, we recall some of the most significant moments in the history of Rome, from the myth of its foundation, to the glory of the Empire and the transformation of the city into the centre of Christianity.

Stories of men and gods coexist at the Capitoline Museums through a path that, thanks to a selection of ancient and modern works, allows you to discover the protagonists of the myth and history of Rome.

The power of weapons and the weapons of power are told in a short route, but full of suggestions, which focuses on the masterpieces of the Capitoline collections.