

The background of the advertisement is a high-quality photograph of a modern, bright interior. A large, square skylight in the ceiling allows natural light to flood the space, highlighting a kitchen island with wooden stools, a living area with a grey sofa and coffee table, and a dining area with a black pendant light. The overall aesthetic is clean, minimalist, and airy.

Korniche Flat Glass™

making light
work for you

korniche.co.uk



Illuminate Your Living Space

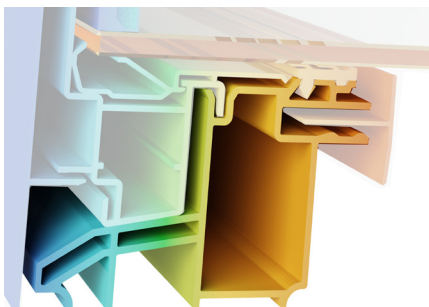
Brighten your home and experience the forefront of innovation with the Korniche Flat Glass™. Create a space into a welcoming room flooded by natural light.

Precision. Simplicity. Beauty.

Korniche crafts products with you in mind, offering an extra touch of elegance and class.

Dive into a world where aesthetics and efficiency combine.

Beyond its visual appeal, the Korniche Flat Glass™ design stands out with its exceptional thermal efficiency, credited to the polyamide inner section. Save money on your energy bills and create a space that you can use all year round.

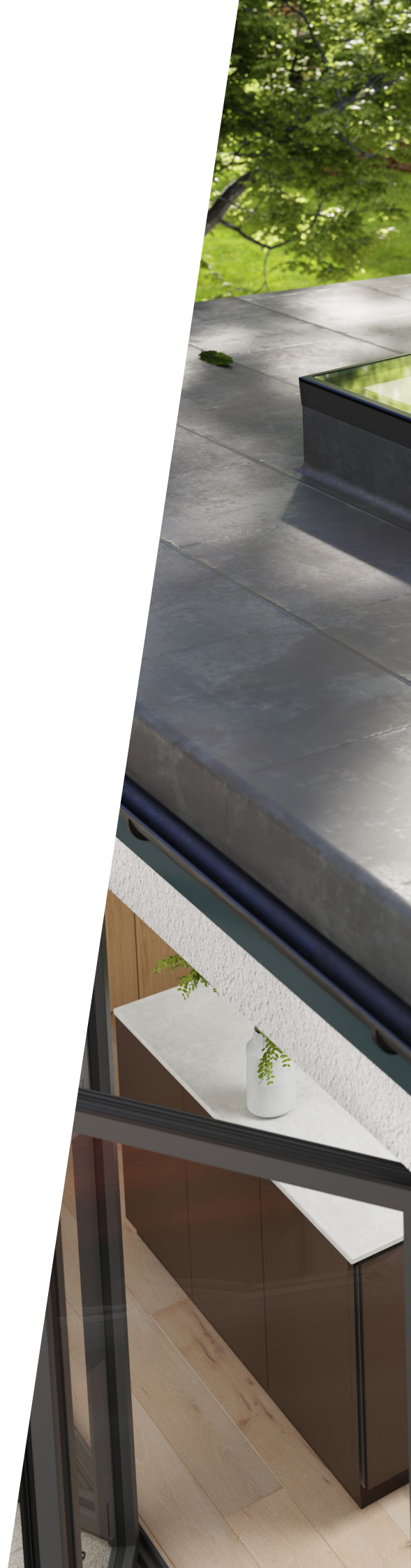


Thermal performance of the polyamide inner section, keeping the heat in and the cold out.

Effortless glass replacement for peace of mind

At Korniche we understand that accidents can happen. That's why we prioritise your peace of mind. Our Flat Glass™ design ensures swift and effortless glazing replacement, all while preserving the integrity of your interior decor.

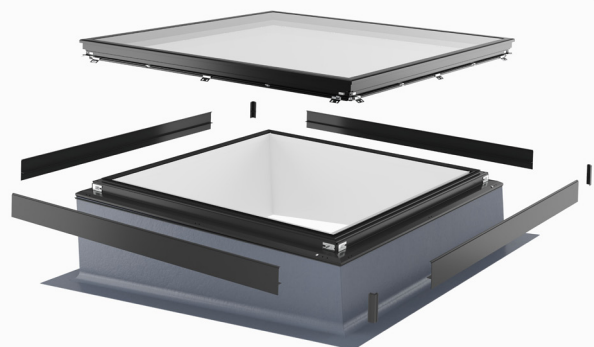
Furthermore, our choice of standard double or triple glazed panels not only offers affordability but also sidesteps the often expensive and cumbersome full replacements seen with our competitors stepped or ceramic-edged designs.





Easy installation with unique replaceable glass unit

The Korniche Flat Glass™ is easy to install. Enjoy the benefit of your build project being watertight in the shortest possible time without the hassle of a complicated installation. The frame arrives fully assembled and just needs to be positioned, secured, and sealed. The glass unit simply clips into place, elegantly concealing the joint between the Flat Glass and the plastered finish, ensuring your décor remains flawless. With Korniche, enhancing your home is both quick and effortless.



all in the detail . . .

Colours to reflect your style

Korniche Flat Glass™ offers a choice of readily available stock colours: Grey, Black, and White. For a more unique touch, Korniche also offer bespoke powder coated RAL colour finishes.

Complementing each colour is a black gloss bezel, meticulously framing the glass unit.

 White RAL 9910



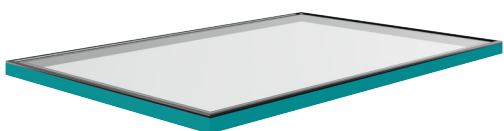
 Black RAL 9005



 Grey RAL 7016



 Bespoke RAL options



Glazing tailored to your preference

Choose from double and triple glazed units available in a range of tints: clear, blue, or neutral, ensuring your aesthetic and functional needs are met.

For those seeking additional durability and safety, Korniche also offer laminated options. Self-clean coatings as standard reduce dirt adhesion and decrease the need for maintenance.



Security with proven standards

Your home's safety is non-negotiable. With Korniche Flat Glass™, you're not just buying a fantastic, glazed product; you're investing in peace of mind. Meeting the stringent PAS 24:2020 standard, our Flat Glass offers enhanced protection against potential threats, helping shield both your valuables and your loved ones. For Korniche, security isn't a mere feature - it's foundational. The commitment to meeting and exceeding these established benchmarks allows you to confidently choose Korniche, knowing that you're placing the safety of your home in trusted hands.



specification

- ✓ PAS24: 2020 security as standard
- ✓ Industry leading thermal performance
- ✓ Sizes up to 3m long and 1.7m wide*
- ✓ 28mm double or 44mm triple glazing options
- ✓ A range of self cleaning glass options in either toughened or laminated glass
- ✓ **Fascia colours:**
 - Grey matt RAL 7016
 - Black matt RAL 9005
 - White gloss RAL 9910
 - Bespoke RAL or BS colours
(additional cost and lead time)
- ✓ Internal cover trim for a perfect decorated finish edge
- ✓ Designed to work with a 3-to-5 degree pitch upstand

*Maximum area is limited to 3m²