

Identifying main and interaction effects of risk factors to predict intensive care admission in patients hospitalized with COVID-19: a retrospective cohort study in Hong Kong

Jiandong Zhou MS # * ¹, Gary Tse PhD FRCP # * ², Sharen Lee ³, Tong Liu MD PhD ², William KK Wu PhD FRCPATH ⁴, Zhidong Cao PhD ⁵, Daniel Dajun Zeng PhD ⁵, Ian Chi Kei Wong PhD ⁶, Qingpeng Zhang PhD * ¹, Bernard Man Yung Cheung PhD FRCP * ⁷

¹ School of Data Science, City University of Hong Kong, Hong Kong, Hong Kong SAR, China

² Tianjin Key Laboratory of Ionic-Molecular Function of Cardiovascular disease, Department of Cardiology, Tianjin Institute of Cardiology, Second Hospital of Tianjin Medical University, Tianjin 300211, China

³ Laboratory of Cardiovascular Physiology, Chinese University of Hong Kong Shenzhen Research Institute, Shenzhen, China

⁴ Department of Anaesthesia and Intensive Care, Li Ka Shing Institute of Health Sciences, Hong Kong SAR, China

⁵ Institute of Automation, Chinese Academy of Sciences, Beijing, China.

⁶ Department of Pharmacology and Pharmacy, University of Hong Kong, Pokfulam, Hong Kong, China

⁷ Division of Clinical Pharmacology and Therapeutics, Department of Medicine, The University of Hong Kong, Pokfulam, Hong Kong SAR, China

joint first authors

* Correspondence to:

Dr. Qingpeng Zhang PhD

School of Data Science, City University of Hong Kong,
Hong Kong SAR, China

Email: qingpeng.zhang@cityu.edu.hk

Prof. Bernard Man Yung Cheung PhD FRCP

Department of Medicine, The University of Hong Kong, Room 405B, 4/F, Professorial Block,
Queen Mary Hospital, 102 Pok Fu Lam Road, Pok Fu Lam,

Hong Kong SAR, China

Email: mycheung@hku.hk

ABSTRACT

Background: The coronavirus disease 2019 (COVID-19) has become a pandemic, placing significant burdens on the healthcare systems. In this study, we tested the hypothesis that a machine learning approach incorporating hidden nonlinear interactions can improve prediction for Intensive care unit (ICU) admission.

Methods: Consecutive patients admitted to public hospitals between 1st January and 24th May 2020 in Hong Kong with COVID-19 diagnosed by RT-PCR were included. The primary endpoint was ICU admission.

Results: This study included 1043 patients (median age 35 (IQR: 32-37; 54% male). Nineteen patients were admitted to ICU (median hospital length of stay (LOS): 30 days, median ICU LOS: 16 days). ICU patients were more likely to be prescribed angiotensin converting enzyme inhibitors/angiotensin receptor blockers, anti-retroviral drugs lopinavir/ritonavir and remdesivir, ribavirin, steroids, interferon-beta and hydroxychloroquine. Significant predictors of ICU admission were older age, male sex, prior coronary artery disease, respiratory diseases, diabetes, hypertension and chronic kidney disease, and activated partial thromboplastin time, red cell count, white cell count, albumin and serum sodium. A tree-based machine learning model identified most informative characteristics and hidden interactions that can predict ICU admission. These were: low red cells with 1) male, 2) older age, 3) low albumin, 4) low sodium or 5) prolonged APTT. A five-fold cross validation confirms superior performance of this model over baseline models including XGBoost, LightGBM, random forests, and multivariate logistic regression.

Conclusions: A machine learning model including baseline risk factors and their hidden interactions can accurately predict ICU admission in COVID-19.

Introduction

Coronavirus disease 2019 (COVID-19), the third coronavirus epidemic in the recent two decades after severe acute respiratory syndrome (SARS) and Middle East respiratory syndrome (MERS), has become a pandemic, placing significant burdens on healthcare systems worldwide ¹. The number of people confirmed with COVID-19 worldwide exceeded 7.4 million on June 11, 2020, including at least 416,000 deaths across 188 countries and territories ². The coronavirus pandemic remains unresolved, even though countries around the world have moved to lift quarantines, stay-at-home orders and other social restrictions. A particular challenge countries face in the COVID-19 pandemic is the surge in demand for intensive care unit (ICU) care ^{3, 4}. Recent studies have exposed an astonishing case fatality rate of 61.5% for critical cases, increasing sharply with older age and for patients with underlying comorbidities ⁵. The unfulfilled ICU demand would immediately lead to elevated fatality rate. The critical question on the clinical characteristics and relevant biomarkers for efficient ICU management of COVID-19 patients remains unanswered ⁶. Identification of prognostic biomarkers to distinguish patients that require immediate medical attention has become an urgent yet challenging necessity. Therefore, the aim of this study is to identify significant risk factors or characteristics as well as hidden interaction effects associated with ICU admission by using an interpretable machine learning approach.

Methods

Study design and population

This study was approved by the Institutional Review Board of the University of Hong Kong/Hospital Authority Hong Kong West Cluster. This was a retrospective, territory-wide cohort study of patients infected with COVID-19, as confirmed by RT-PCR, between 1st January and 24th May 2020. The patients were identified from the Clinical Data Analysis and Reporting System (CDARS), a territory-wide database that centralizes patient information from individual local hospitals to establish comprehensive medical data, including clinical characteristics, disease diagnosis, laboratory results, and drug treatment details. The system has been previously used by both our team and other teams in Hong Kong⁷⁻¹⁰. Clinical data include primary diagnoses after admission (1st January 2020 to 24th May 2020) and comorbidities (1st January 1999 to 31st December 2019) in the past decade. The list of conditions identified is detailed in the **Supplementary Appendix**. Diagnosis of COVID-19 was made by RT-PCR. Other respiratory viruses, including influenza A virus (H1N1, H3N2, H7N9), influenza B virus, respiratory syncytial virus, parainfluenza virus, adenovirus, SARS coronavirus (SARS-CoV), and MERS coronavirus (MERS-CoV) were also examined with RT-PCR.

Outcomes and statistical analysis

The primary outcome was ICU admission. Continuous variables were presented as median (95% confidence interval [CI] or interquartile range [IQR]) and categorical variables were presented count

(%). The Mann-Whitney U test was used to compare continuous variables. The χ^2 test with Yates' correction was used for 2×2 contingency data, and Pearson's χ^2 test was used for contingency data for variables with more than two categories. To identify the significant risk factors associated with ICU admission of COVID-19 patients, univariate logistic regression was used to estimate odds ratios (ORs) and 95% CIs, adjusting for age, sex, comorbidities. A two-sided α of less than 0.05 was considered statistically significant. Statistical analyses (including univariate logistic regression) were performed using RStudio software (Version: 1.1.456) and Python (Version: 3.6).

Development of a tree-based interpretable machine learning model

After the identification of significant predictors for ICU admission, we aim to further construct a practically useful ICU use decision-making model by considering both main and interaction effects among those important univariable variables. Here the interaction effects, mainly pairwise interactions, capture the hidden nonlinear dependence between risk characteristics and can provide additional information for ICU outcome identification, besides individual predictors. Significant predictors identified on univariate logistic regression were entered into a state-of-the-art interpretable boosting machine model: Explainable Boosting Machine (EBM) ¹¹.

The EBM model is an explainable supervised predictor developed by using modern machine learning techniques like bagging, gradient boosting, and automatic main and interaction effects detection with high accuracy of state-of-the-art learning models (e.g., random forests ¹² and XGBoost ¹³) with its light memory usage and fast prediction time. EBM is constructed with multiple

hierarchically organized simple classifiers consisting of sequences of binary decisions. Unlike these black-box models, EBM produce lossless explanations for outcome predictions due to its great interpretability potential of tree-based decision system, which is desired for clinically operable decision-making. In contrast, internally black-box-like learning models are typically difficult to interpret. Intrinsic interpretability as equipped in EBM aims to intrinsically interpret the model predictions. The contribution of main and interaction effects to identify ICU use can be determined by their accumulated use in each decision tree splitting process, which can be easily sorted and visualized in descending order to identify the more important variables.

Results

Baseline characteristics

The flowchart of patient enrolment in this study is provided in **Figure 1**. A total of 1043 patients admitted to the hospital between 1st January 2020 and 24th May 2020 were included in this study.

The case distributions with respect to the different districts of Hong Kong are shown in **Figure 2**.

There are 373 cases from Hong Kong Island District (36%), 212 cases from Kowloon District (20%), 398 cases from New Territories District (38%), and 60 cases without district indicators (6%).

Chinese is the most common nationality (914, 87.6%), followed by Filipino (38, 3.6%), Pakistani (22, 2.1%), British (14, 1.3%), French (9, 0.9%), Nepalese (9, 0.9%), American (6, 0.58%), Indian (4, 0.4%), Canadian (2, 0.2%), Australian (2, 0.2%) and Korean, German, New Zealander, Greek, Thai, Indonesian, Japanese, and Netherlander (1 each, 0.1%).

The baseline demographics, comorbidities, medications, and laboratory test findings are shown in **Table 1**. Of the included patients, 563 were males (54%, median age: 35 [IQR: 32-37], range: 0-93 years old) and 480 were females (46%, median age: 35 [IQR: 32-37], range 1-96 years old) (**Figure 3**). Most patients (n=776, 74%) were between 18 and 60 years of age. In total, 19 patients (14 males, 73.68%, median ICU length of stay [LOS]: 16 days) were admitted to the ICU and the numbers within age intervals are also shown in **Figure 3**. Patients admitted to the ICU has median inpatient length of stay (LOS) of 30 days, in comparison to a median of 20 days for patients without ICU admission. The timeline of COVID-19 cases after hospitalization is shown in **Figure 4**. Amongst the ICU patients, there are 12 Chinese, 1 Filipino, and 6 of unknown race. The 19 ICU patients has median urine output of 1610 ml/24 hours (IQR: 1255-2000, max: 3310). The distributions of other physiological parameters are shown in **Table 1**. In addition, 9 ICU patients (47.37%) were on ventilators for respiratory support, and three (15.79%) received renal replacement therapy. Four patients died. Two deaths occurred during inpatient hospitalization with single admission, one during ICU hospitalization, and one upon admission.

A total of 535 COVID-19 patients (87.3%) had records of preexisting comorbidities (n=1237) between January 1st, 1999 to December 31st, 2019. Of these, 230 patients (42.99%) had respiratory diseases, 174 patients (32.52%) had gastrointestinal diseases, 108 patients (20.19%) had hypertension, 54 patients (10.09%) had diabetes, 21 patients (3.93%) had chronic kidney diseases, and 10 patients (1.87%) had cardiovascular diseases.

In terms of medications prescribed during the inpatient stay for non-ICU patients, lopinavir/ritonavir (Kaletra) is the most commonly used drug (60.8%), followed by ribavirin (53.2%),

interferon-beta (32.5%), angiotensin converting enzyme inhibitors (ACEI) or angiotensin receptor blockers (ARBs) (18.9%), steroids (14.6%), hydroxychloroquine (13.2%), and remdesivir (2.5%). Among the ICU patients, lopinavir/ritonavir was the most frequently prescribed drug (88.9%), followed by ribavirin (77.8%), ACEI/ARB (77.8%), hydroxychloroquine (38.9%), interferon-beta (38.9%), steroids (27.8%) and remdesivir (5.6%). We find that patients admitted to ICU are more likely to be given Kaletra and ribavirin, which may reflect more aggressive treatment towards critically ill patients.

Predictors of ICU admission

Univariate logistic regression was conducted to identify significant predictors of ICU admission (**Table 3**). The following are significant predictors for ICU admission of COVID-19 patients:

(1) Demographic features: Age (OR: 1.06 [1.03 -1.09], $p < 0.0001$) and male (OR: 2.42 [0.87-6.78], $p < 0.0001$).

(2) Comorbidities: cardiovascular diseases (OR: 3.12 [0.81-10.12], $p < 0.0001$), respiratory diseases (OR: 8.15 [1.85-14.44], $p < 0.0001$), diabetes (OR: 6.17 [2.07-9.36], $p < 0.0001$), hypertension (OR: 3.15 [1.25-5.32], $p < 0.0001$) and chronic kidney diseases (OR: 4.87 [2.66-9.71], $p = 0.0009$). The analyses demonstrate the importance of baseline comorbidities in affecting the prognosis of patients with COVID-19.

(3) Drugs: ACEI or ARB (OR: 1.10 [0.24-2.14], $p < 0.0001$), lopinavir/ritonavir (OR: 1.73 [1.02-3.05], $p < 0.0001$), ribavirin (OR: 1.43 [0.37-2.05], $p < 0.0001$), remdesivir (OR: 1.04 [0.39-2.80],

$p < 0.0001$), interferon beta (OR: 1.04 [0.39-2.80], $p < 0.0001$) and hydroxychloroquine (OR: 1.24 [0.90-1.73], $p = 0.00036$).

(4) Biochemical markers: APTT (OR: 1.19 [1.08-1.30], $p = 0.0003$), neutrophil count (OR: 1.54 [1.53-1.55], $p < 0.0001$), red blood cells (OR: 1.47 [1.46-1.48], $p < 0.0001$), white blood cells (OR: 1.47 [1.21-1.79], $p < 0.0001$), albumin (OR: 0.80 [0.74-0.87], $p < 0.0001$), serum sodium (OR: 1.26 [1.08-1.93], $p < 0.0001$), lactate dehydrogenase (OR: 1.01 [0.85-1.12], $p < 0.0001$), total cholesterol (OR: 1.04 [1.02-1.06], $p < 0.0001$), spot urine glucose (OR: 1.32 [1.31-1.32], $p < 0.0001$), hemoglobin A1c (OR: 1.03 [1.03-1.04], $p < 0.0001$), random glucose (OR: 1.05 [1.04-1.06], $p < 0.0001$), serum triglycerides (OR: 1.46 [1.43-1.48], $p < 0.0001$).

Main and Hidden Interaction Effects

The EBM model was employed to distinguish patients in need for ICU admission by accurately uncovering the main and hidden interaction effects. This utilized different data modalities such as demographics, comorbidities and multiple laboratory results. Significant variables identified by univariate logistic regression were entered into the EBM model, which will deal with the trade-off between having a minimal number of predictors and the capacity of good model prediction, therefore avoiding overfitting. The cohort is randomly classified into training and validation datasets with an 80:20 split. The obtained importance rankings of significant predictors for ICU admission are shown in **Figure 5**. Red blood cells, APTT, sex, age and white blood cells are the five most informative parameters in predicting ICU admission, followed by hypertension, serum sodium, serum albumin,

serum triglycerides, and respiratory disease. Significant predictors for ICU admission identification are provided in **Figure 6**. We can observe that the following combination of patient characteristics predicts a higher likelihood for ICU admission: 1) male patients with lower level of red blood cells, 2) older patients with lower level of red blood cells, 3) patients with both lower levels of red blood cells and albumin or sodium, 4) patients with longer APTT and lower level of red blood cells. Important hidden pair-wise interaction effects are shown in **Figure 7**, where green or yellow zones with larger values indicate higher probability of ICU admission that can be predicted by examining the pair-wise variable interactions. We can observe from the plots of interaction effects that 1) male with lower red blood cells, (2) older age with lower red blood cells, 3) lower albumin level and lower red blood cells, 4) lower sodium level and lower red blood cells, 5) older age and prolonged APTT, 6) lower red blood cells level and higher white blood cells level, 7) lower red blood cells level and prolonged APTT, 8) older age and higher level white predicts higher probability of ICU admission.

EBM can provide predictions on individual cases. For example, a randomly selected patient (male, 69 years old) with ICU admission has the characteristics as shown in **Figure 8**. He has prior comorbidities of cardiovascular, chronic kidney, hypertension, diabetes and lung and respiratory diseases. EBM predicts that he needs ICU attention with 72% probability, based on his characteristics of prior cardiovascular disease, white blood cells at $12.43 \times 10^9/L$, lactate dehydrogenase level at 390 (U/L), APTT at 33.70 (sec), prior comorbidities of hypertension and diabetes, and others. But his characteristic of triglycerides at 6.29 provide non-supportive information to the prediction outcome. By contrast, a randomly selected patient (female, 54 years old) who did not require ICU admission is exemplified in **Figure 9**. EBM accurately predicted that

she doesn't need ICU admission. Local explanations provided by EBM can provide precise ICU admission predictions based on patient's main characteristics in a user-friendly visualization way for practical clinical use.

The five-fold cross validation performance of EBM was compared with baseline models including XGBoost, LightGBM, random forests, and multivariate logistic regression, as shown in **Table 4**. EBM outperforms all baseline models according to evaluation metrics of precision, recall, F1 score, and area under the curve (AUC) of the receiving operating characteristics (ROC) curve.

Discussion

The main findings of this territory-wide retrospective cohort study are twofold: (1) Significant predictors of ICU admission were older age, male sex, prior coronary artery disease, respiratory diseases, diabetes, hypertension and chronic kidney disease, and activated partial thromboplastin time, red cell count, white cell count, albumin and sodium; (2) A tree-based interpretable machine learning model identified most informative characteristics and hidden interactions that can predict ICU admission. These interacting factors were low red cells with 1) male, 2) older age, 3) low albumin, 4) low sodium or 5) prolonged APTT around 33 seconds.

Prior studies have reported that patients with pre-existing medical comorbidities have a poorer prognosis in not only COVID-19 but also other infectious diseases such as SARS-CoV and MERS¹⁴.¹⁵ In COVID-19, hypertension, diabetes, coronary heart disease, chronic kidney disease, cerebrovascular disease, hepatitis, and chronic obstructive pulmonary disease (COPD) have been identified as predictors of disease severity and mortality in COVID-19^{16, 17}. In this study, we confirm that these comorbidities are predictive of ICU utilization and provide a simple clinical approach to quantify the initial risk of ICU admission precisely and quickly. Furthermore, various laboratory markers have been shown to predict adverse outcomes. Our study found that prolonged APTT and raised D-dimer, reflecting coagulopathy, was predictive of ICU admission. Other significant predictors were neutrophil count (inflammation), red cell count (oxygen carrying capacity), albumin (nutritional status), sodium (electrolyte homeostasis) and lactate dehydrogenase (tissue damage). Troponin was borderline significant, reflecting that myocardial damage is an important determinant of ICU use.

We further illustrate the novel findings that interacting factors between low red cell count and basic demographics such as gender and age, or laboratory findings such as albumin, sodium and APTT are also important determinants. Older patients with laboratory examinations of lower red cells, lower albumin, lower sodium and prolonged APTT are subject to high ICU admission risk. Red cells, albumin, sodium and APTT can be easily collected in any hospital. In crowded hospitals with limited medical resources, this simple model can help to quickly prioritize patients for ICU attention.

The optimum medication regimen for COVID-19 is yet to be determined. However, small scale observational studies or trials have suggested the use of antivirals¹⁸, antimalarials¹⁹, interferons²⁰, anticoagulants²¹ and antibodies²², though not all have been shown to be beneficial in larger clinical trials²³. A better understanding of the pathophysiological mechanisms underlying COVID-19 will enable better treatment strategies to be devised²⁴. In our study, the anti-viral drug lopinavir/ritonavir (Kaletra) was the commonest prescribed drug, followed by ribavirin, interferon-beta, ACEIs/ARBs, steroids, hydroxychloroquine and the antiviral remdesivir. We found that these medications were more frequently prescribed in patients requiring ICU compared to those without. This may reflect the increased severity of cases in which clinicians were more likely to prescribe a cocktail of drugs.

Conclusion

In summary, this study has identified important univariable and interaction effects informing intensive care admission in patients hospitalized with COVID-19. Significant univariable predictors of ICU admission include older age, male sex, prior coronary artery disease, respiratory diseases,

diabetes, hypertension and chronic kidney disease, and activated partial thromboplastin time, red cell count, white cell count, albumin and serum sodium. A tree-based interpretable machine learning model identified most informative characteristics and hidden interactions (i.e., low red cells with male, older age, low albumin, low sodium or prolonged APTT) for COVID-19 prognostic ICU admission prediction. The tree-based machine learning model outperforms several baselines, enabling early detection of ICU admission, efficient healthcare resource utilization, and potentially mortality reduction of hospitalized patients with COVID-19.

References

1. Morens DM, Daszak P, Taubenberger JK. Escaping pandora's box - another novel coronavirus. *N Engl J Med*. 2020;382:1293-1295
2. University JH. Covid-19 dashboard by the center for systems science and engineering (csse) at johns hopkins university (jhu). 2020
3. Li X, Guan B, Su T, Liu W, Chen M, Bin Waleed K, Guan X, Gary T, Zhu Z. Impact of cardiovascular disease and cardiac injury on in-hospital mortality in patients with covid-19: A systematic review and meta-analysis. *Heart*. 2020
4. Wang Y, Roever L, Tse G, Liu T. 2019-novel coronavirus-related acute cardiac injury cannot be ignored. *Curr Atheroscler Rep*. 2020;22:14
5. Yang X, Yu Y, Xu J, Shu H, Xia Ja, Liu H, Wu Y, Zhang L, Yu Z, Fang M, Yu T, Wang Y, Pan S, Zou X, Yuan S, Shang Y. Clinical course and outcomes of critically ill

- patients with sars-cov-2 pneumonia in wuhan, china: A single-centered, retrospective, observational study. *The Lancet Respiratory Medicine*. 2020;8:475-481
6. Phua J, Weng L, Ling L, Egi M, Lim C-M, Divatia JV, Shrestha BR, Arabi YM, Ng J, Gomersall CD, Nishimura M, Koh Y, Du B. Intensive care management of coronavirus disease 2019 (covid-19): Challenges and recommendations. *The Lancet Respiratory Medicine*. 2020;8:506-517
 7. Li CK, Xu Z, Ho J, Lakhani I, Liu YZ, Bazoukis G, Liu T, Wong WT, Cheng SH, Chan MT, Zhang L, Gin T, Wong MC, Wong ICK, Wu WKK, Zhang Q, Tse G. Association of npac score with survival after acute myocardial infarction. *Atherosclerosis*. 2020;301:30-36
 8. Ju C, Lai RWC, Li KHC, Hung JKF, Lai JCL, Ho J, Liu Y, Tsoi MF, Liu T, Cheung BM, Wong ICK, Tam LS, Tse G. Comparative cardiovascular risk in users versus non-users of xanthine oxidase inhibitors and febuxostat versus allopurinol users. *Rheumatology (Oxford)*. 2019
 9. Lau WCY, Cheung CL, Man KKC, Chan EW, Sing CW, Lip GYH, Siu CW, Lam JK, Lee ACH, Wong ICK. Association between treatment with apixaban, dabigatran, rivaroxaban, or warfarin and risk for osteoporotic fractures among patients with atrial fibrillation. *Ann Intern Med*. 2020
 10. Lau WC, Chan EW, Cheung CL, Sing CW, Man KK, Lip GY, Siu CW, Lam JK, Lee AC, Wong IC. Association between dabigatran vs warfarin and risk of osteoporotic

fractures among patients with nonvalvular atrial fibrillation. *JAMA*.

2017;317:1151-1158

11. Nori H, Jenkins S, Koch P, Caruana R. *Interpretml: A unified framework for machine learning interpretability*. 2019.
12. Breiman L. Random forests. *Machine Learning*. 2001;45:5-32
13. Chen T, Guestrin C. *Xgboost: A scalable tree boosting system*. 2016.
14. Assiri A, Al-Tawfiq JA, Al-Rabeeah AA, Al-Rabiah FA, Al-Hajjar S, Al-Barrak A, Flemban H, Al-Nassir WN, Balkhy HH, Al-Hakeem RF, Makhdoom HQ, Zumla AI, Memish ZA. Epidemiological, demographic, and clinical characteristics of 47 cases of middle east respiratory syndrome coronavirus disease from saudi arabia: A descriptive study. *Lancet Infect Dis*. 2013;13:752-761
15. Badawi A, Ryoo SG. Prevalence of comorbidities in the middle east respiratory syndrome coronavirus (mers-cov): A systematic review and meta-analysis. *Int J Infect Dis*. 2016;49:129-133
16. Zhou F, Yu T, Du R, Fan G, Liu Y, Liu Z, Xiang J, Wang Y, Song B, Gu X, Guan L, Wei Y, Li H, Wu X, Xu J, Tu S, Zhang Y, Chen H, Cao B. Clinical course and risk factors for mortality of adult inpatients with covid-19 in wuhan, china: A retrospective cohort study. *The Lancet*. 2020;395
17. Epidemiology Working Group for Ncip Epidemic Response CCfDC, Prevention. [the epidemiological characteristics of an outbreak of 2019 novel coronavirus diseases (covid-19) in china]. *Zhonghua Liu Xing Bing Xue Za Zhi*. 2020;41:145-151

18. Antinori S, Cossu MV, Ridolfo AL, Rech R, Bonazzetti C, Pagani G, Gubertini G, Coen M, Magni C, Castelli A, Borghi B, Colombo R, Giorgi R, Angeli E, Mileto D, Milazzo L, Vimercati S, Pellicciotta M, Corbellino M, Torre A, Rusconi S, Oreni L, Gismondo MR, Giacomelli A, Meroni L, Rizzardini G, Galli M. Compassionate remdesivir treatment of severe covid-19 pneumonia in intensive care unit (icu) and non-icu patients: Clinical outcome and differences in post-treatment hospitalisation status. *Pharmacol Res.* 2020;158:104899
19. Gautret P, Lagier JC, Parola P, Hoang VT, Meddeb L, Mailhe M, Doudier B, Courjon J, Giordanengo V, Vieira VE, Dupont HT, Honore S, Colson P, Chabriere E, La Scola B, Rolain JM, Brouqui P, Raoult D. Hydroxychloroquine and azithromycin as a treatment of covid-19: Results of an open-label non-randomized clinical trial. *Int J Antimicrob Agents.* 2020:105949
20. Liu Y, Li J, Feng Y. Critical care response to a hospital outbreak of the 2019-ncov infection in shenzhen, china. *Crit Care.* 2020;24:56
21. Tang N, Bai H, Chen X, Gong J, Li D, Sun Z. Anticoagulant treatment is associated with decreased mortality in severe coronavirus disease 2019 patients with coagulopathy. *J Thromb Haemost.* 2020;18:1094-1099
22. Zhang Q, Wang Y, Qi C, Shen L, Li J. Clinical trial analysis of 2019-ncov therapy registered in china. *J Med Virol.* 2020;92:540-545
23. Wang Y, Zhang D, Du G, Du R, Zhao J, Jin Y, Fu S, Gao L, Cheng Z, Lu Q, Hu Y, Luo G, Wang K, Lu Y, Li H, Wang S, Ruan S, Yang C, Mei C, Wang Y, Ding D, Wu F,

Tang X, Ye X, Ye Y, Liu B, Yang J, Yin W, Wang A, Fan G, Zhou F, Liu Z, Gu X, Xu J, Shang L, Zhang Y, Cao L, Guo T, Wan Y, Qin H, Jiang Y, Jaki T, Hayden FG, Horby PW, Cao B, Wang C. Remdesivir in adults with severe covid-19: A randomised, double-blind, placebo-controlled, multicentre trial. *The Lancet*. 2020;395:1569-1578

24. Romagnoli S, Peris A, De Gaudio AR, Geppetti P. Sars-cov-2 and covid-19: Between pathophysiology complexity and therapeutic uncertainty. *Physiol Rev*. 2020

Tables.

Table 1. Physiological parameter distributions of patients with ICU admission

Parameter	High: Median (IQR, max)	Low: Median (IQR, max)
White cell count, x 10 ⁹ /L	8.11 (5.65-13.85, 24.25)	6 (4.525-9.17, 16.61)
Urea, mmol/L	5.9 (4.5-8.8, 13.8)	-
Platelet count, x 10 ⁹ /L	240 (220.5-318.5, 472)	235 (202-282.5, 461)
Na ⁺ , mmol/L	137.3 (135.35-140.45, 147)	135.6 (133.6-139.95, 145)
Mean BP, mmHg	110 (100-123.5, 183)	67 (61-74, 93)
K ⁺ , mmol/L	4.17 (3.675-4.45, 5.3)	3.66 (3.15-3.95, 4.39)
Highest Respiratory Rate, /min	29 (24.5-32, 44)	19 (14-20.5, 30)
Heart rate, /min	92 (86-110, 154)	60 (52.5-70.5, 84)
Hematocrit	0.378 (0.355-0.413, 0.5)	0.363 (0.308-0.4095, 0.5)
Hemoglobin, g/dL	13 (12.35-14, 16.5)	12.6 (10.7-13.65, 16.5)
Blood glucose, mmol/L	8.6 (6.85-12.35, 25.8)	5.9 (4.9-6.85, 10.5)
Creat, mmol/L	73 (57-102.45, 266)	69 (54.5-86.5, 173.3)
Core temperature, °c	38.3 (37.4-39, 40.8)	36.6 (36.15-37.05, 38.4)
Bilirubin, umol/L	14 (9-22.1, 79)	-
Albumin, g/L	27.6 (23.5-34.15, 48.4)	25 (21-30.6, 48.4)

Table 2. Demographic, epidemiological, clinical, medication, laboratory and ICU use outcome information collected from COVID-19 patients

ICU=intensive unit care; COVID-19 = coronavirus disease 2019; APTT = Activated partial thromboplastin time; IQR = Interquartile range; * for $p \leq 0.05$, ** for $p \leq 0.01$, *** for $p \leq 0.001$

#: Descriptive statistics of individual comorbidities are included in supplementary material 1.

*: Descriptive statistics of prescribed commodities and therapeutic classifications are included in supplementary material 2. Drug commodities are included in the Appendix.

£: Random glucose test requires that blood sample is drawn at a laboratory at any time. Fasted or recently eaten will not affect the test.

Demographics	All patients (n=1043)	Patients without ICU use (n=1034)	Patient with ICU use (n=19)	P value
Age, year, n (IQR, max)	34 (32-36, 96)	34 (32-36, 96)	59 (43-65, 93)	<0.0001***
Sex, n (%)				0.0040**
Male	563 (53.98%)	549 (53.61%)	14 (73.68%)	-
Female	480 (46.02 %)	475 (46.39%)	5 (26.32%)	-
Epidemiological feature — n (%)	All patients (n=1043)	Patients without ICU use (n=1034)	Patient with ICU use (n=19)	P value
Hong Kong island	373 (35.67%)	370 (36.13%)	3 (15.79%)	0.0014**
Kowloon	212 (20.33%)	209 (20.41%)	3 (15.79%)	0.6331
New Territories	398 (38.16%)	386 (37.70%)	12 (63.16%)	0.0002***
Others	60 (5.75%)	59 (5.76%)	1 (5.26%)	0.9847
Comorbidities[#] — n (%)	All patients (n=535)	Patients without ICU use (n=524)	Patient with ICU use (n=11)	P value
Cardiovascular diseases	10 (1.87%)	3 (0.57%)	7 (63.64%)	<0.0001***
Lung and respiratory disease	230 (42.99%)	220 (41.98%)	10 (90.91%)	<0.0001***
Diabetes	54 (10.09%)	47 (8.97%)	7 (63.64%)	<0.0001***
Hypertension	108 (20.19%)	99 (18.89%)	9 (81.82%)	<0.0001***
Gastrointestinal diseases	174 (32.52%)	169 (32.25%)	5 (45.45%)	0.1050
Chronic kidney diseases	21 (3.93%)	18 (3.44%)	3 (27.27%)	<0.0001***
Drugs[*] — n (%)	All patients (n=976)	Patients without ICU use (n=958)	Patient with ICU use (n=18)	P value
ACEI or ARB	184 (18.85%)	170 (17.75%)	14 (77.78%)	<0.0001***
Steroids	143 (14.65%)	138 (14.41%)	5 (27.78%)	0.8831
Kaletra	593 (60.76%)	577 (60.23%)	16 (88.89%)	<0.0001***
Ribavirin	519 (53.18%)	505 (52.71%)	14 (77.78%)	0.0002***
Remdesivir	24 (2.46%)	23 (2.40%)	1 (5.56%)	0.3783
Interferon beta	317 (32.48%)	313 (32.67%)	4 (22.22%)	0.1770

Hydroxychloroquine	129 (13.22%)	122 (12.73%)	7 (38.89%)	<0.0001***
Laboratory examinations — median (IQR, max)				
Complete blood counts				
APTT, sec; n=518	31.1 (27.9-34.6, 49.1)	30.8 (27.75-34.35, 47.3); n=499	34.5 (34.5-36.1, 49.1); n=19	0.00065***
Basophil, x10 ⁹ /L; n=748	0.01 (0-0.02, 0.2)	0.01 (0-0.02, 0.1); n=732	0 (0-0.02, 0.2); n=16	0.3836
Eosinophil, x10 ⁹ /L; n=752	0.03 (0-0.1, 0.84)	0.03 (0-0.1, 0.84); n=736	0 (0-0.045, 0.2); n=16	0.1499
Hematocrit, L/L; n=859	0.412 (0.38-0.441, 0.502)	0.413 (0.382-0.441, 0.502); n=845	0.369 (0.369-0.3995, 0.443); n=14	0.0086**
Hemoglobin, g/dL; n=794	14 (12.9-15, 17.8)	14 (12.95-15, 17.8); n=782	12.35 (12.35-13.75, 15); n=12	0.0221*
Lymphocyte, %; n=437	26.2 (20-34.7, 64.1)	26.4 (20.2-34.75, 64.1); n=423	15.6 (15.6-32.05, 44.7); n=14	0.1005
Lymphocyte, x10 ⁹ /L; n=753	1.4 (1-1.85, 6.6)	1.4 (1.01-1.85, 6.6); n=737	1.05 (1.05-1.57, 4.5); n=16	0.1392
Mean corpuscular hemoglobin, pg; n=860	29.8 (28.6-30.8, 36.1)	29.8 (28.6-30.8, 36.1); n=846	29.9 (29.9-30.9, 31.9); n=14	0.9393
Mean corpuscular hemoglobin concentration, g/dL; n=859	34.1 (33.4-34.8, 37)	34.1 (33.4-34.8, 37); n=845	34.35 (34.35-34.65, 36); n=14	0.4507
Monocyte, %; n=437	8.74 (6.8-11.8, 21.6)	8.8 (6.8-11.8, 21.6); n=423	7.75 (7.75-10.55, 12.9); n=14	0.3173
Monocyte, x10 ⁹ /L; n=753	0.44 (0.33-0.6, 1.7)	0.44 (0.33-0.6, 1.7); n=737	0.445 (0.445-0.72, 1.2); n=16	0.9827
Neutrophil, %; n=437	62.2 (53.7-69.5, 95)	62 (53.6-69.25, 87.8); n=423	72.7 (72.7-87.65, 95); n=14	0.0911
Neutrophil, x10 ⁹ /L; n=753	3.37 (2.41-4.5, 18.63)	3.34 (2.41-4.48, 12.22); n=737	5.3 (5.3-7.98, 18.63); n=16	0.0136*
Platelet count, x10 ⁹ /L; n=700	222 (180-272, 625)	222 (181-272, 625); n=689	184 (184-246, 391); n=11	0.4996
Prothrombin time, sec; n=367	12 (11.45-12.65, 25.4)	12 (11.4-12.6, 25.4); n=354	12.4 (12.4-13.3, 16.1); n=13	0.0214*
Red blood cells, x10 ¹² /L; n=794	4.76 (4.415-5.16, 7.07)	4.77 (4.42-5.165, 7.07); n=782	4.31 (4.31-4.695, 4.99); n=12	0.0267*
White blood cells, x10 ⁹ /L; n=793	5.56 (4.4-6.82, 21.19)	5.54 (4.4-6.8, 14.38); n=781	6.94 (6.94-11.13, 21.19); n=12	0.1246
Liver function tests				
Alanine aminotransferase, U/L; n=763	22 (15-33.95, 202)	22 (15-33, 202); n=750	35 (35-47, 74); n=13	0.2356
Albumin, g/L; n=980	42 (38.8-45, 54.9)	42 (38.96-45, 54.9); n=961	35.7 (35.7-39, 48.4); n=19	0.0009***
Alkaline phosphatase, U/L; n=206	64 (52.5-75.5, 490)	63 (52-75, 490); n=199	85 (85-103.5, 145); n=7	0.0170*
Bilirubin total, umol/L; n=152	8 (6-11, 31.2)	8 (6-11, 31.2); n=146	9 (9-13.65, 23.2); n=6	0.5141
Creatinine, umol/L; n=980	71.2 (60-84, 412)	71 (60-84, 412); n=961	83 (83-95, 195); n=19	0.1960
Potassium, mmol/L; n=875	3.9 (3.66-4.2, 5.59)	3.9 (3.66-4.2, 5.59); n=856	3.8 (3.8-4.045, 5.3); n=19	0.5406
Protein, Total, g/L; n=152	74 (70-77, 87.7)	74 (70-76.25, 87.7); n=146	80.35 (80.35-84, 86.8); n=6	0.3180

Serum sodium, mmol/L; n=876	139 (137.235-141, 146)	139 (137.43-141, 146); n=857	136.2 (136.2-137.5, 143); n=19	0.0008***
Alkaline phosphatase, U/L; n=105	64 (51-75, 389)	65 (51.5-75, 389); n=102	55 (55-58, 61); n=3	0.3915
Bilirubin, umol/L; n=720	7 (5-9.65, 42.1)	7 (5-9.55, 42.1); n=707	8 (8-10.5, 14.2); n=13	0.6877
Protein, g/L; n=765	75 (71.5-78.9, 92.24)	75 (71.55-78.9, 92.24); n=752	70.6 (70.6-75, 80.9); n=13	0.0635
Urea, mmol/L; n=980	3.9 (3.12-4.7, 15.6)	3.9 (3.11-4.7, 15.6); n=961	4.1 (4.1-5.7, 9.2); n=19	0.5162
Cardiac function tests				
D-dimer, ng/mL; n=72	334 (228-700, 5167)	315.5 (229-594, 4364); n=70	3048 (3048-3048, 5167); n=2	0.1108
High sensitive troponin-I, ng/L; n=352	2.275 (0.9-4.4, 652)	2.19 (0.9-4, 98); n=337	7.04 (7.04-19.05, 652); n=15	0.0007***
Lactate dehydrogenase, U/L; n=870	185 (158-226, 874)	183 (157-221, 563); n=851	291 (291-437, 874); n=19	<0.0001***
Lipid profile				
Cholesterol, mmol/L; n=68	4.335 (3.69-5.247, 9.43)	4.43 (3.68-5.214, 9.43); n=61	3.87 (3.87-5.77, 7.2); n=7	0.9967
HDL-Cholesterol, mmol/L; n=29	1.084 (0.895-1.4, 1.8)	1.084 (0.895-1.4, 1.8); n=25	1 (1-1.35, 1.6); n=4	0.9954
LDL-Cholesterol, mmol/L; n=21	2.3818 (1.9764-2.9545, 4.6909)	2.3818 (2.0545-2.9545, 3.7273); n=17	2.3818 (2.3818-3.8227, 4.6909); n=4	0.9908
Serum triglycerides, mmol/L; n=72	1.35 (0.955-2.0855, 8.6)	1.35 (0.955-2.0695, 8.6); n=70	3.64 (3.64-3.64, 6.294); n=2	0.8595
Diabetes mellitus tests				
Spot urine glucose, mmol/L; n=123	5.15 (4.7-6.79, 26.3)	5.1 (4.7-6.25, 16.63); n=116	8.4 (8.4-8.9, 26.3); n=7	0.0067**
Hemoglobin A1c (IFCC), mmol/mol; n=49	34.8 (32.8-37.4, 73.6)	34.8 (32.7-37.05, 73.6); n=47	39.45 (39.45-39.45, 40.9); n=2	0.2668
Random glucose [‡] , mmol/L; n=183	5.35 (4.8-6.445, 20.8)	5.325 (4.775-6.445, 20.8); n=178	5.87 (5.87-6.06, 9.27); n=5	0.5943

Table 3. Predictors of ICU admission in COVID-19 patients

ICU=intensive unit care; COVID-19 = coronavirus disease 2019; APTT=Activated partial thromboplastin time; IQR=Interquartile range; * for $p \leq 0.05$, ** for $p \leq 0.01$, *** for $p \leq 0.001$

All analyses were adjusted for age, sex, comorbidities and residence districts unless otherwise specified.

*: Adjusted for sex, comorbidities, and residence districts.

§: Adjusted for sex, and residence districts.

£: Adjusted for sex, comorbidities. Univariate analysis results of individual drugs are included in in supplementary material 3.

†: Adjusted for sex, comorbidities, and residence districts.

	Odds Ratio (95%CI)	P-value
Demographics		
Age (years)*	1.06 (1.03-1.09)	<0.0001 ***
<18; n=0	-	-
18-24; n=1	0.23 (0.03-1.74)	0.1542
25-49; n=5	0.48 (0.17-1.35)	0.1662
50-64; n=6	1.80 (0.68-4.79)	0.2395
65-74; n=6	8.29 (3.03-22.66)	<0.0001 ***
≥75; n=1	2.22 (0.29-17.29)	0.4463
Male sex (vs female)	2.42 (0.87-6.78)	<0.0001 ***
Comorbidities §		
Cardiovascular diseases	3.12 (0.81-10.12)	<0.0001 ***
Respiratory diseases	8.15 (1.85-14.44)	<0.0001 ***
Diabetes diseases	6.17 (2.07-9.36)	<0.0001 ***
Hypertension	3.15 (1.25-5.32)	0.00015 ***
Gastrointestinal diseases	1.83 (0.55-6.08)	0.3242
Chronic kidney diseases	4.87 (2.66-9.71)	0.0009 ***
Drugs £		
ACEI or ARB	1.10 (0.24-2.14)	<0.0001 ***
Steroids	2.27 (0.80-6.46)	0.1256
Lopinavir/ritonavir	1.73 (1.02-3.05)	<0.0001 ***
Ribavirin	1.43 (0.37-2.05)	<0.0001 ***
Remdesivir	1.39 (0.35-2.11)	0.0021 **
Interferon beta	1.04 (0.39-2.80)	<0.0001 ***
Hydroxychloroquine	1.24 (0.90-1.73)	0.00036 ***

Laboratory examinations †

Complete blood counts

APTT, sec; n=518	1.19 (1.08-1.30)	<0.0001***
Basophil, x10 ⁹ /L; n=748	0.91 (0.86-0.97)	0.9269
Eosinophil, x10 ⁹ /L; n=752	0.55 (0.53-0.56)	0.1106
Hematocrit, L/L; n=859	0.01 (0.00-0.03)	0.0021**
Hemoglobin, g/dL; n=794	0.65 (0.64-0.72)	0.0072*
Lymphocyte, %; n=437	0.92 (0.92-0.92)	0.0067**
Lymphocyte, x10 ⁹ /L; n=753	0.57 (0.36-0.59)	0.2215
Mean corpuscular hemoglobin, pg; n=860	1.02 (0.84-1.24)	0.8690
Mean corpuscular hemoglobin concentration, Monocyte, %; n=437	0.85 (0.84-0.85)	0.0696
Monocyte, x10 ⁹ /L; n=753	2.30 (2.16-2.44)	0.4054
Neutrophil, %; n=437	1.09 (1.09-1.09)	0.0011**
Neutrophil, x10 ⁹ /L; n=753	1.54 (1.23-1.65)	<0.0001***
Platelet count, x10 ⁹ /L; n=700	1.00 (0.59-1.20)	0.3242
Prothrombin time, sec; n=367	1.35 (1.34-1.36)	0.0349
Red blood cells, x10 ¹² /L; n=794	0.25 (0.24-0.26)	0.0152
White blood cells, x10 ⁹ /L; n=793	1.47 (1.46-1.48)	0.0001***
White blood cells, x10 ⁹ /L; n=793	1.47 (1.21-1.79)	<0.0001***

Liver function tests

Alanine aminotransferase, U/L; n=763	1.01 (0.85-1.11)	0.3982
Albumin, g/L; n=980	0.80 (0.74-0.87)	<0.0001***
Alkaline phosphatase, U/L; n=206	1.01 (0.85-1.12)	0.2485
Bilirubin total, umol/L; n=152	1.08 (1.07-1.08)	0.2300
Creatinine, umol/L; n=980	1.01 (0.82-1.12)	0.0285
Potassium, mmol/L; n=875	0.60 (0.58-0.62)	0.3965
Protein, Total, g/L; n=152	1.21 (1.20-1.22)	0.0225
Serum sodium, mmol/L; n=876	1.26 (1.08-1.93)	<0.0001***
Alkaline phosphatase, U/L; n=105	0.95 (0.95-0.95)	0.1859
Bilirubin, umol/L; n=720	1.01 (0.79-1.12)	0.7903
Protein, g/L; n=765	0.87 (0.87-1.28)	0.0057**
Urea, mmol/L; n=980	1.22 (1.02-1.23)	0.0594

Cardiac function tests

D-dimer, ng/mL; n=72	1.10 (1.00-1.31)	0.0031**
----------------------	------------------	----------

High sensitive troponin-I, ng/L; n=352	1.03 (1.02-1.03)	0.0512
Lactate dehydrogenase, U/L; n=870	1.02 (1.01-1.03)	<0.0001***
Lipid profile		
Cholesterol, mmol/L; n=68	1.04 (1.02-1.06)	<0.0001***
HDL-Cholesterol, mmol/L; n=29	0.94 (0.86-1.03)	0.0015**
LDL-Cholesterol, mmol/L; n=21	1.09 (1.04-1.13)	0.0159
Serum triglycerides, mmol/L; n=72	1.46 (1.43-1.48)	<0.0001***
Diabetes mellitus tests		
Spot urine glucose, mmol/L; n=123	1.32 (1.31-1.32)	<0.0001***
Hemoglobin A1c (IFCC), mmol/mol; n=49	1.03 (1.03-1.04)	<0.0001***
Random glucose, mmol/L; n=183	1.05 (1.04-1.06)	<0.0001***

Table 4. Performance analysis of EBM over baseline models

	Precision	Recall	F1 Score	AUC
EBM	0.9117	0.9263	0.9189	0.9231
XGBoost	0.9074	0.8976	0.9025	0.8982
LightGBM	0.8337	0.8501	0.8418	0.8040
Random forest	0.8188	0.8215	0.8201	0.8250
Logistic regression	0.8337	0.8041	0.8186	0.8310

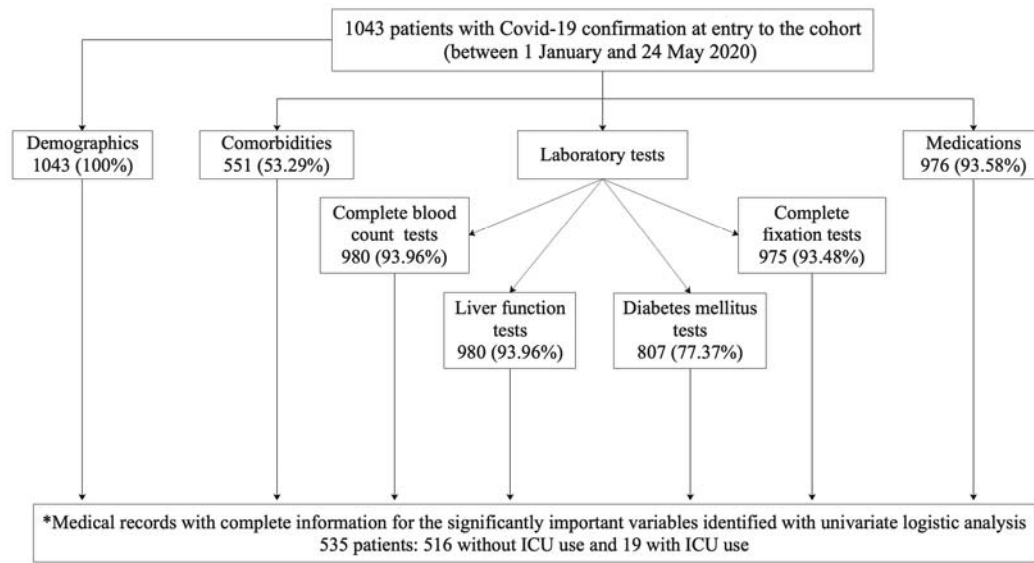


Figure 1. Flowchart of patient enrolment. * denotes the imposition of multiple criteria; Study baseline was defined as 24 hours after arrival at hospital; COVID-19 = coronavirus disease 2019; ICU=intensive care unit.

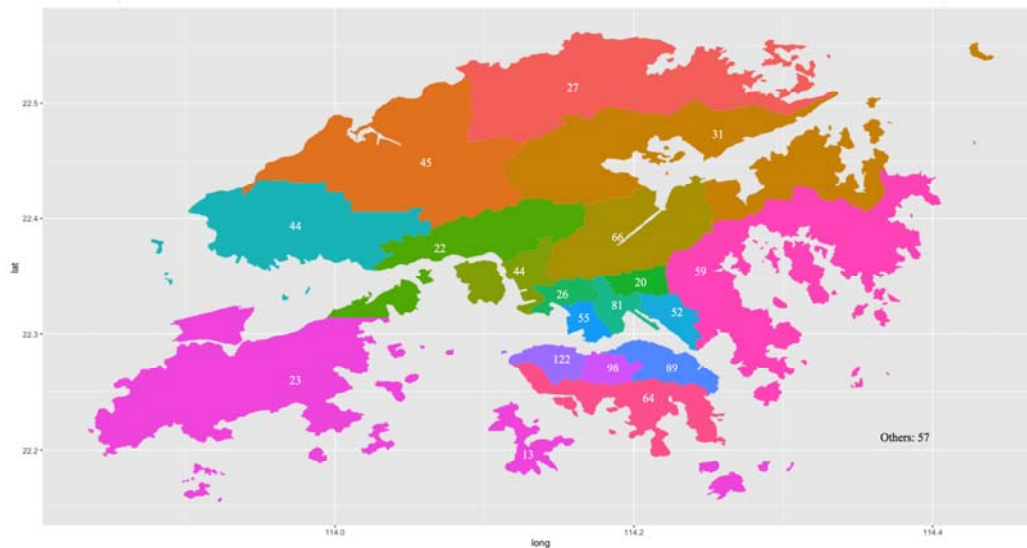


Figure 2. Distribution of COVID-19 patients in Hong Kong districts of residence

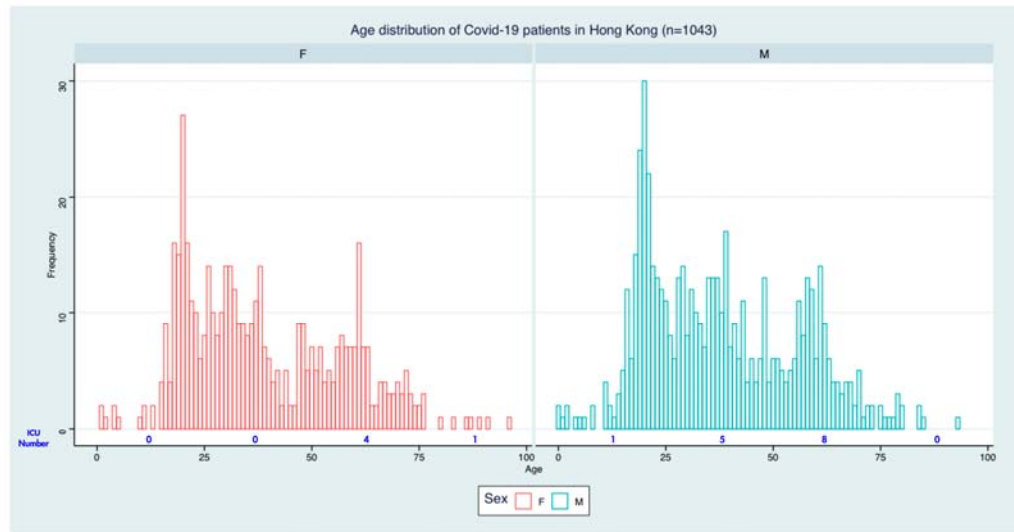


Figure 3. Age distribution of COVID-19 inpatients in Hong Kong.

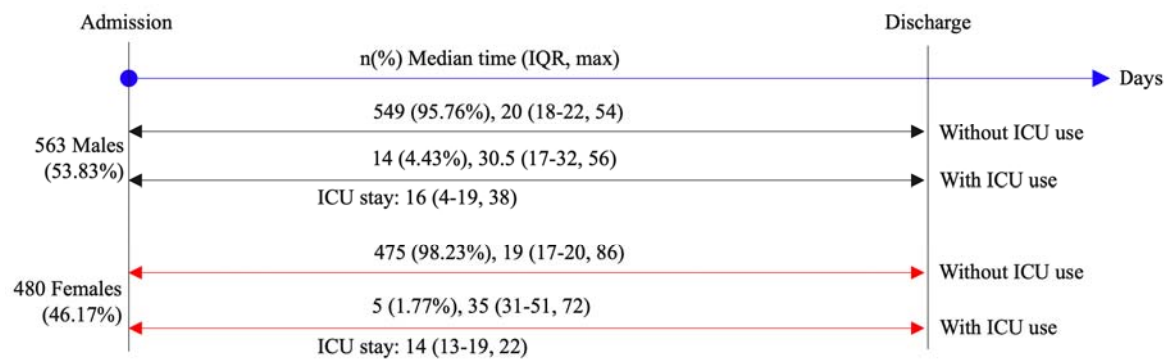


Figure 4. Timeline of COVID-19 cases after hospitalization.

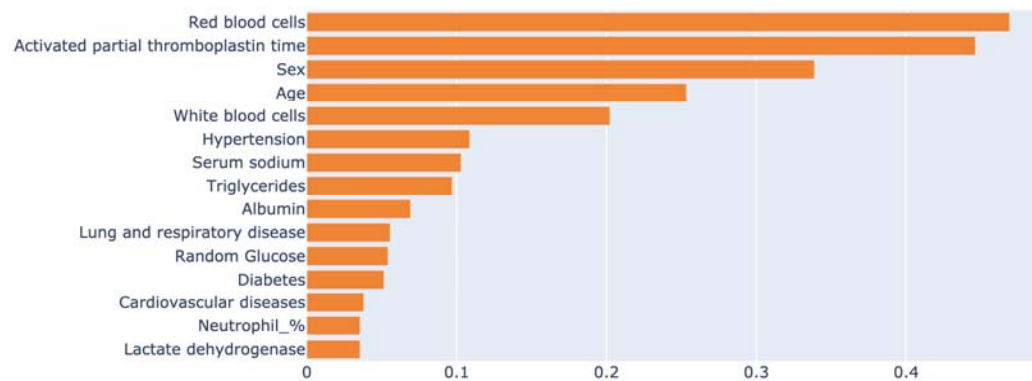


Figure 5. Importance ranking of significant univariable characteristics for ICU identification.

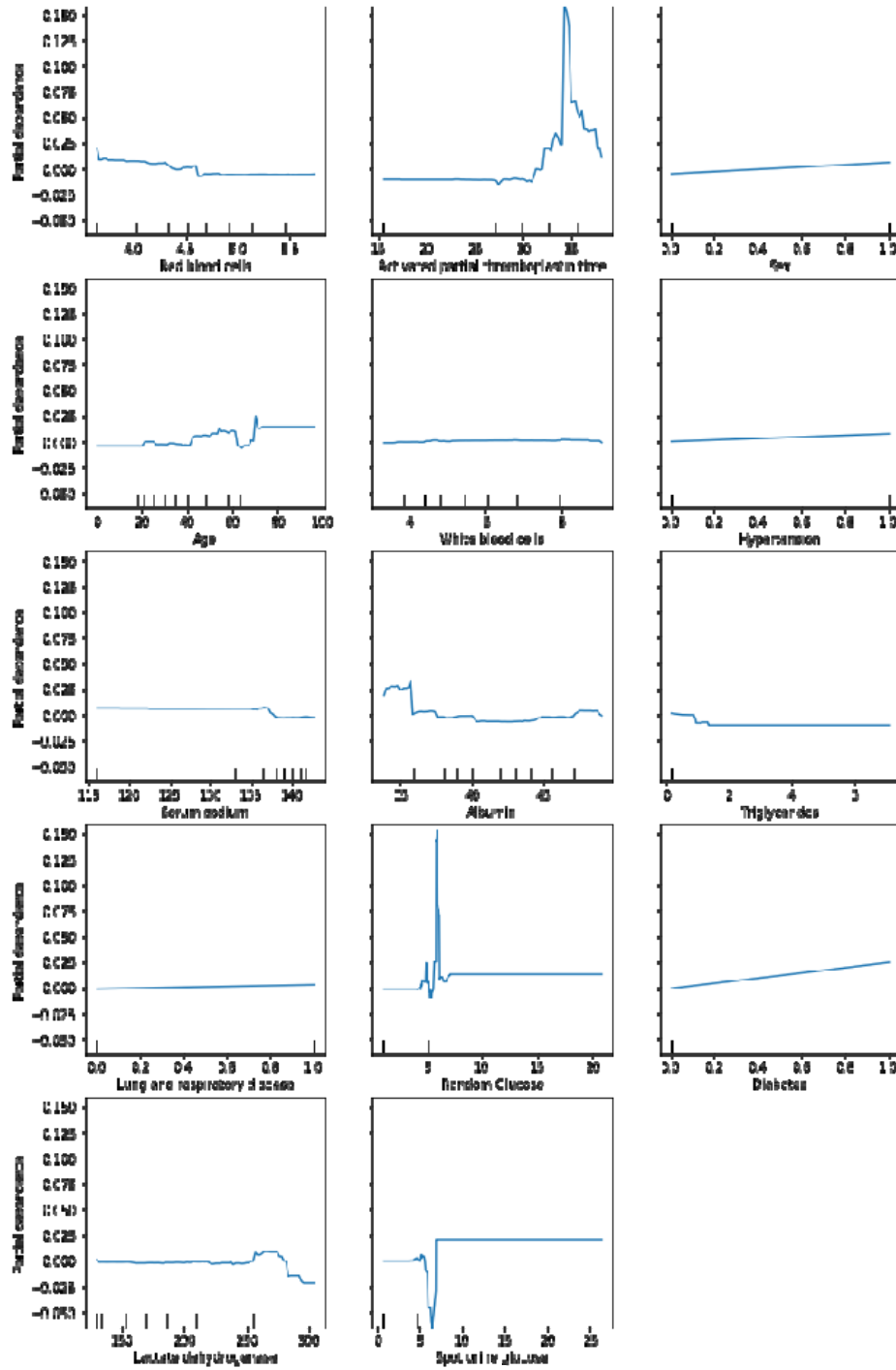


Figure 6. Changing effects of significant predictors on ICU use identification.

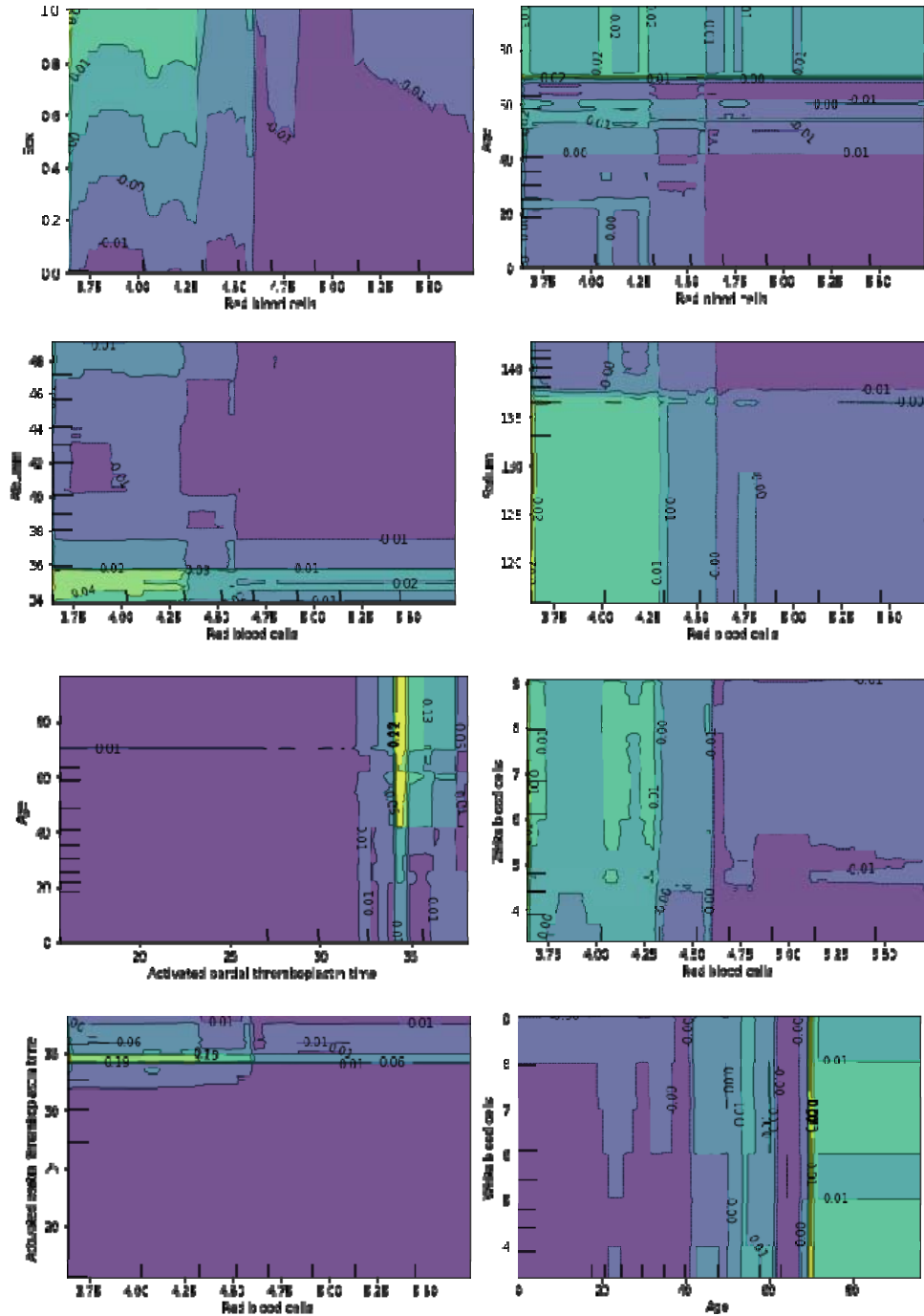


Figure 7. Interaction effects of important pairwise univariable characteristics for ICU identification.

Predicted 0.72 | Actual 1.00

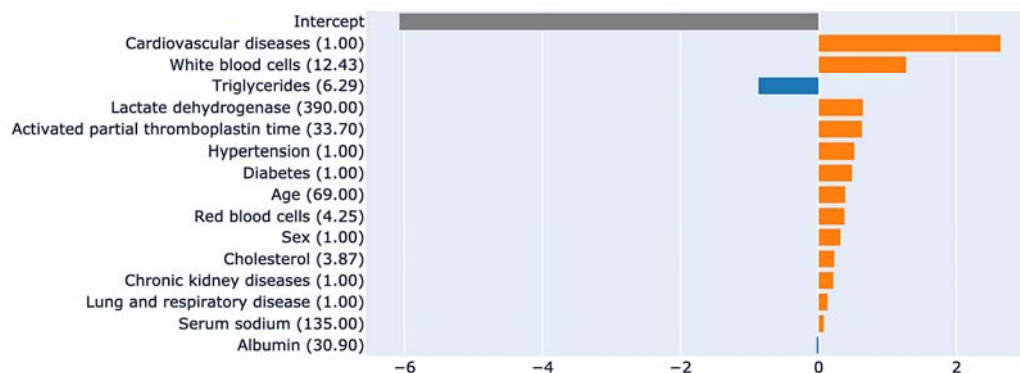


Figure 8. Local explanation for a random patient with ICU admission

Predicted 0.00 | Actual 0.00

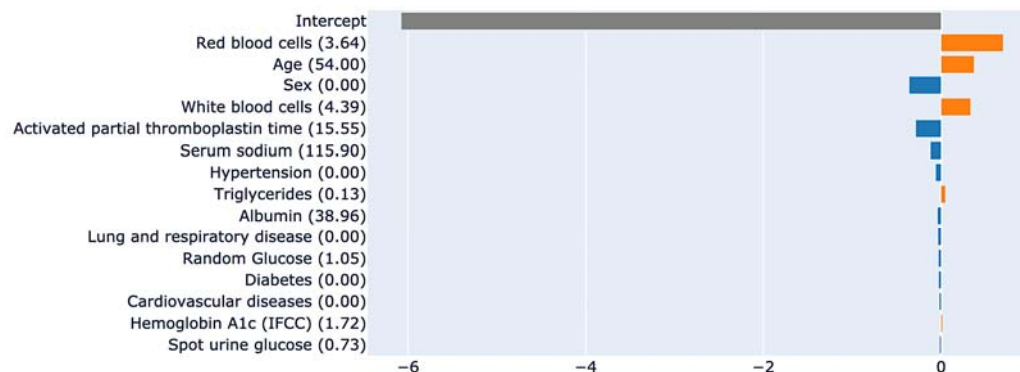


Figure 9. Local explanation for a random patient without ICU admission