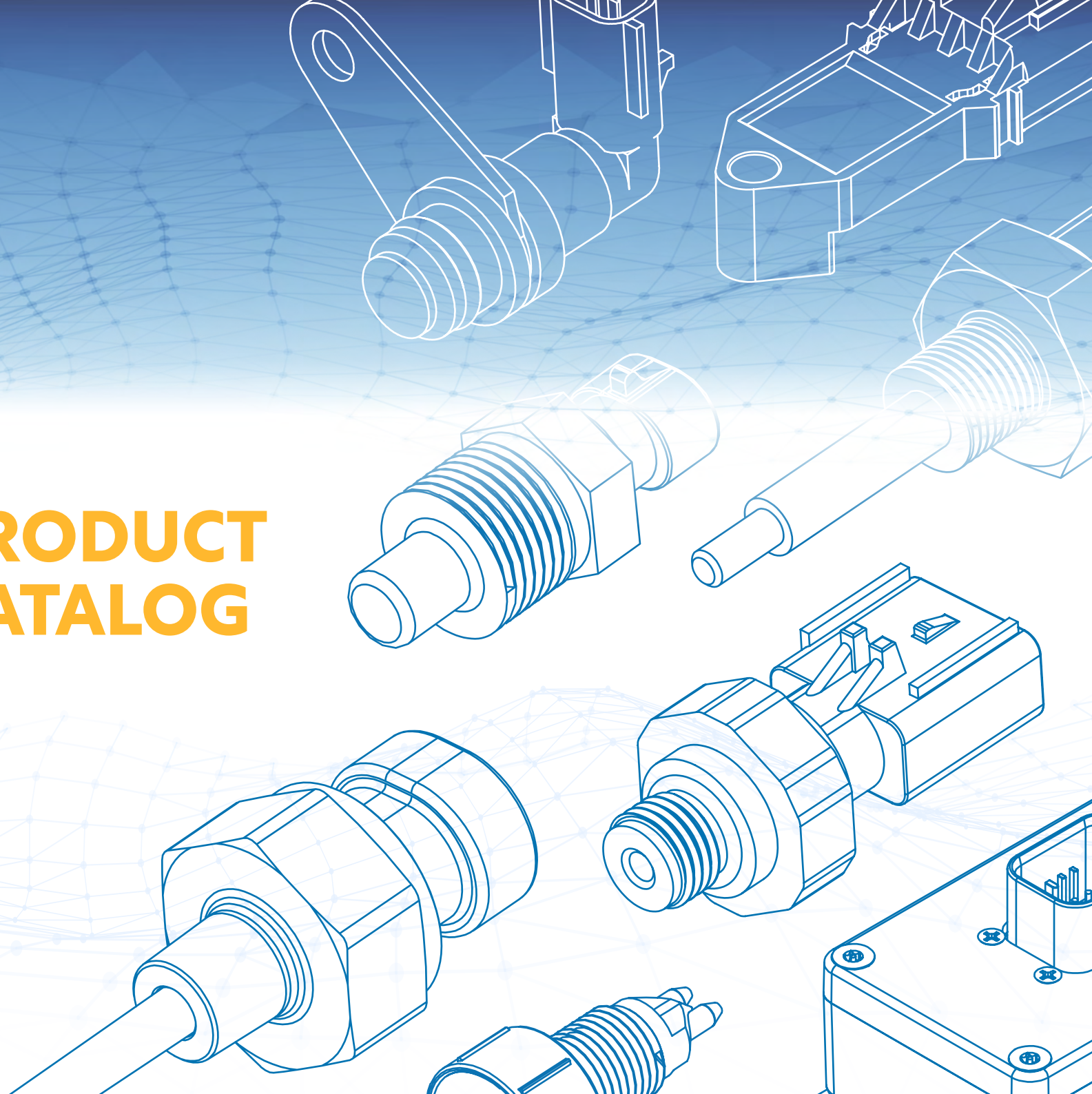




PRODUCT CATALOG



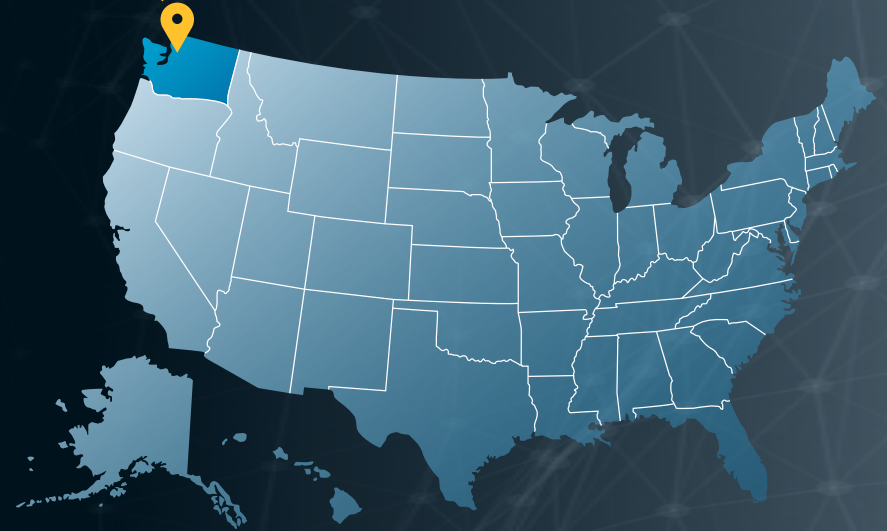
Index Sensors manufacturing facility & headquarters are located in **Arlington, Washington**

WHO WE ARE:

Since 1976, we have been a leading manufacturer of switches, sensors, and controls for the commercial truck, engine, agricultural, off-road, and industrial equipment markets. Our products monitor, control and protect some of the world's toughest equipment.

Index's products and custom solutions play an important role "behind the scenes", improving basic machine operation, as well as benefit equipment users with easier operation, diagnostics, and lower maintenance costs.

Index is certified **ISO 9001:2015** by Orion Registrar. Our ISO certification guarantees that every product meets strict quality requirements.



HOW WE CAN HELP:

Customer & Technical Support

Customer support is available to assist you with your order, answer any questions about orders in process, the availability of new or existing products, as well as any technical questions you may have. Reach our customer support representatives via email at: customersupport@indexsensors.com.

Sales Support

At Index, we are always looking for ways we can help enhance your products and your business. Whether you are looking for rugged and reliable products, more intelligent components or custom-engineered controls, we're ready to help. If you are interested in learning more about Index products, email us at: sales@indexsensors.com.

Want to talk? Call us at: **1 (800) 726-1737**.

WHAT WE DO:

- CAN Control Modules
- Electronic Controls
- Temperature Switches
- Pressure Switches
- Temperature Sensors
- Pressure Sensors
- Level Sensors & Probes
- Position & ABS Sensors
- Custom Harnessing

TABLE OF CONTENTS

Index Family of Products.....	1-2
Pressure Sensors.....	3
Pressure Switches.....	4
Temperature Sensors.....	5
Temperature Switches.....	6
Level Sensors.....	7
Level Probes.....	8
A/C Protection.....	9
Position/ABS Sensors.....	10
J1939 Sensor ECM.....	11
J1939 Inclinometer.....	12
Thermal Management.....	13
Pressure Sensor Parts List.....	14
Temperature Sensor Part List.....	15
Level Sensor Part List.....	15
Position/ABS Sensor Part List.....	16
Mechanical Pressure Switch Part List.....	17-18
Electronic Temperature Switch Part List.....	19
Mechanical Temperature Switch Part List.....	20-22
Liquid Level Probe Part List.....	23
A/C Protection Part List.....	23
Limited Product Warranty.....	24

ORIGINAL EQUIPMENT MANUFACTURERS

Index provides components and custom-engineered products to Original Equipment Manufacturers (OEMs) in a variety of fields: heavy-duty highway (truck & bus), automotive, construction, agriculture or lawn care, marine, defense, power generation, and assorted industrial applications.



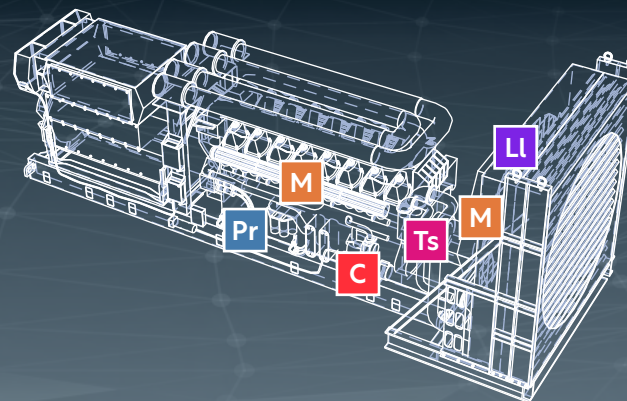
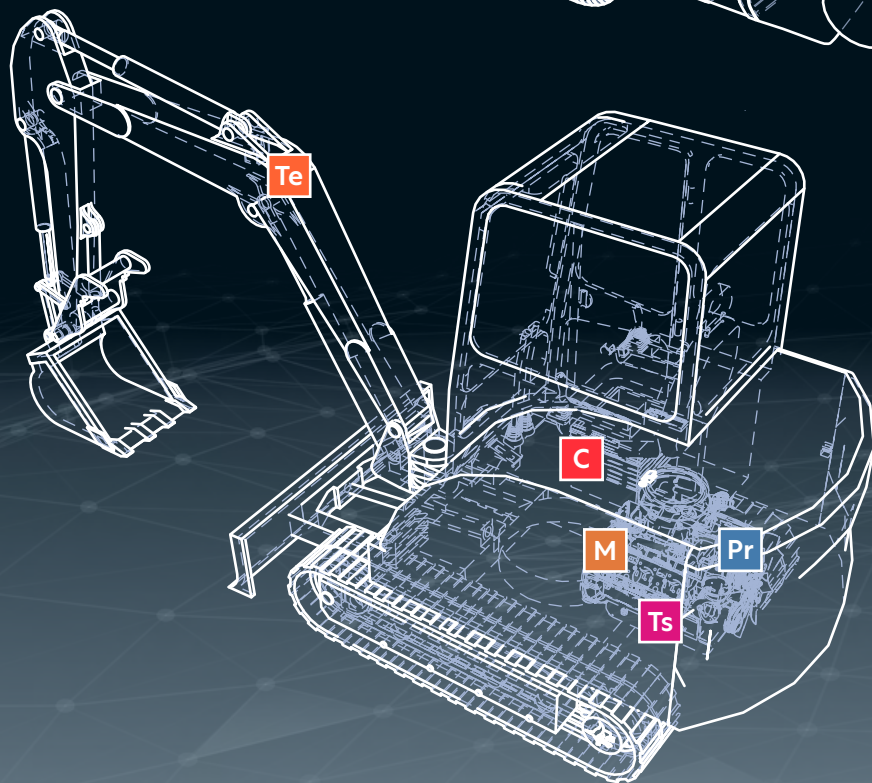
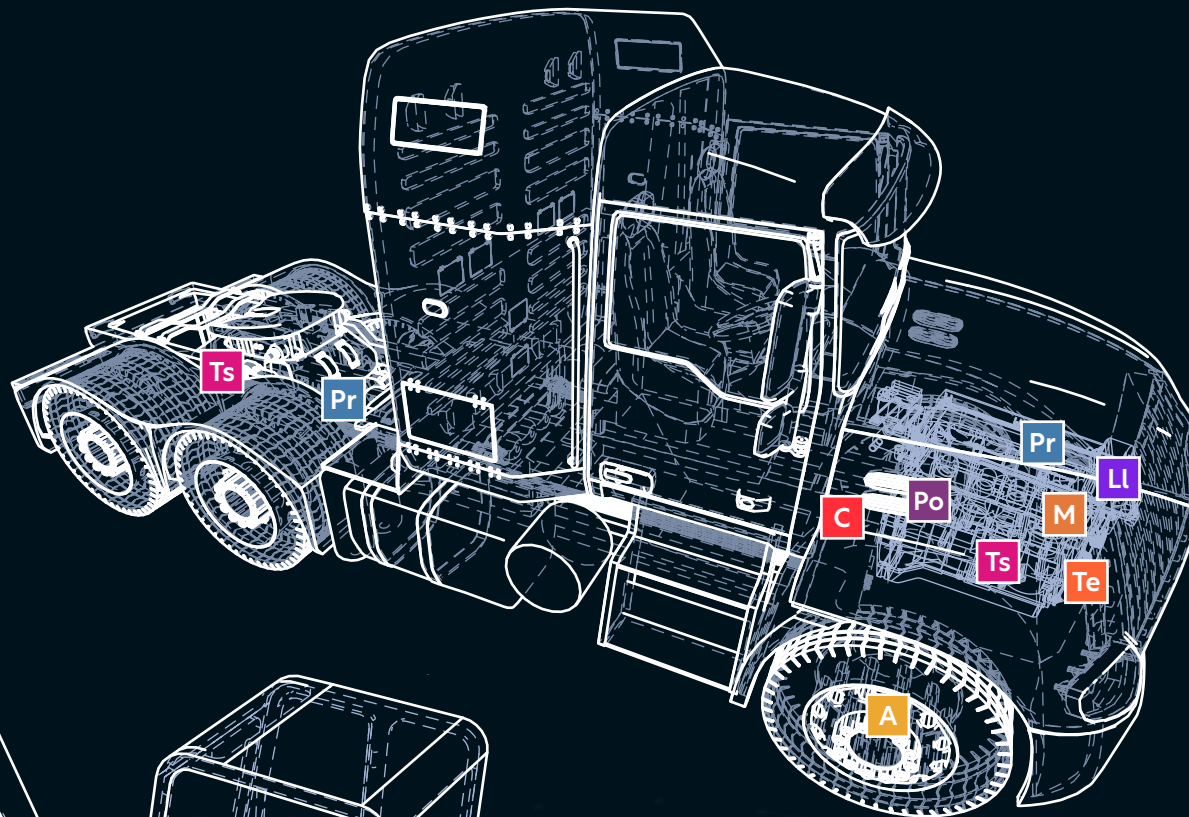
AFTERMARKET INDEPENDENT DISTRIBUTORS

Our products are carried by independent heavy-duty parts distributors all over the world. Contact us to locate a distributor near you.



AFTERMARKET HEAVY VEHICLE DEALER

Index parts are carried by OEM dealers and distributors. Contact your local OEM truck dealer to purchase genuine index products.



INDEX FAMILY OF PRODUCTS

Pr PRESSURE SENSORS

- Oil pressure sensors
- Air pressure sensors
- Fuel pressure sensors

Ll LIQUID LEVEL

- Coolant level sensors
- Water in fuel sensors
- Low coolant probes
- Water in fuel probes

po POSITION SENSORS

- Crankshaft position sensors
- Camshaft position sensors

Ts TEMPERATURE SENSORS

- Transmission temperature sensors
- Battery temperature sensors
- Oil temperature sensors
- Coolant temperature sensors
- Brake temperature sensors
- PWM (Pulse Width Modulation)

C EMBEDDED CONTROL MODULES

- A/C protection modules
- Inclinometers
- Multi-sensor modules

Te ELECTRONIC TEMPERATURE SWITCHES

- Air-sensing fan driver switches
- Dual-function switches
- Cooling fan timer switches

M MECHANICAL PRESSURE AND TEMPERATURE SWITCHES

- Air conditioning pressure switches
- Transmission pressure switches
- Air pressure switches
- Hydraulic pressure switches
- Brake fluid pressure switches
- Oil pressure switches
- Engine temperature switches
- Hydraulic temperature switches

A ABS SENSORS

- Wheel speed sensors

PRESSURE SENSORS

Index provides pressure sensors for both vehicle and industrial applications to measure fuel, oil, and air pressure.

Operating pressures available up to 15,000psi.
Available in absolute pressure, gauge pressure, and differential pressure.



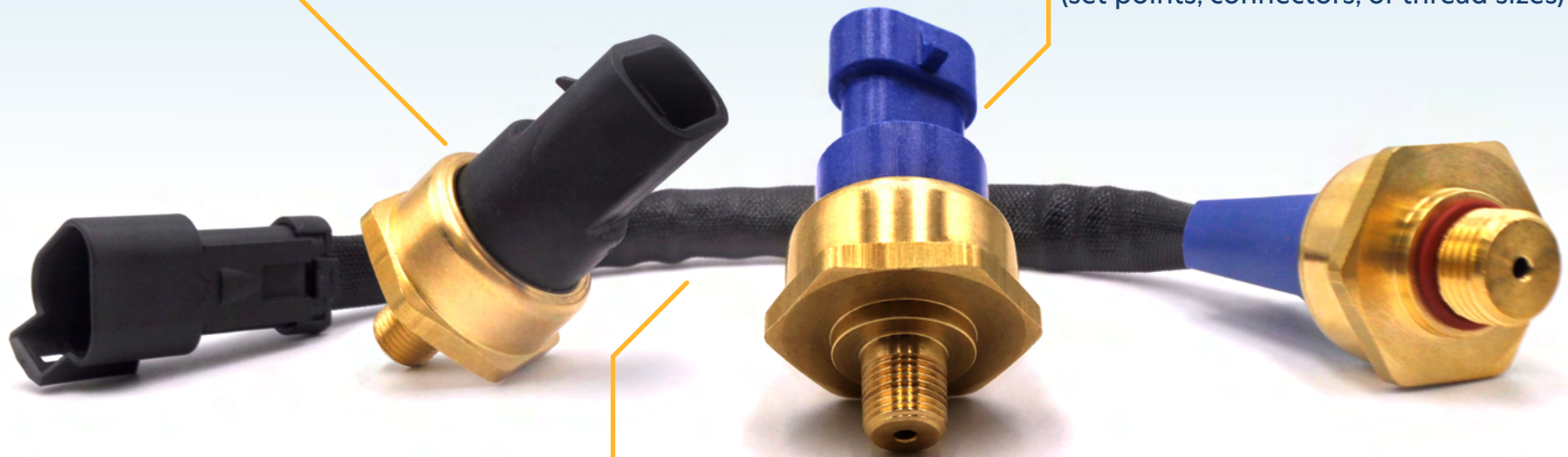
Numerous thread sizing, connector options, and wire lengths available.

PRESSURE SWITCHES

Mechanical high-reliability single-point on/off control device; commonly used for fuel, oil, or air pressure in vehicle and industrial applications.

Tight environmental seal perfect for heavy-duty applications.

Full range configurations available. (set points, connectors, or thread sizes)



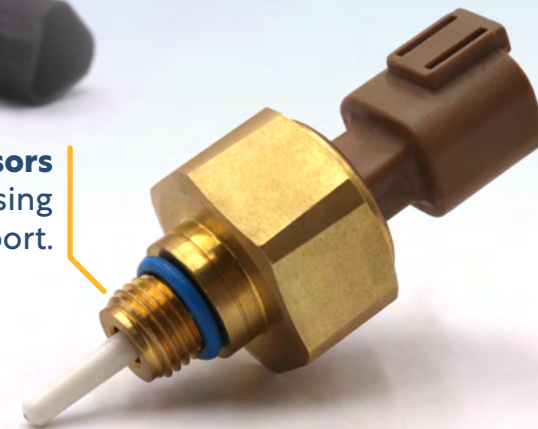
Available in different wire lengths.

TEMPERATURE SENSORS

Designed for a wide variety of heavy-duty and industrial applications, our temperature sensors are available in 2-wire, 3-wire active, 4-wire PWM, and dual-function configurations.



Pressure-Temperature Sensors
Provides dual-function sensing
in a single port.



Pulse Width Modulation (PWM)
Standalone device that provides
variable speed fan control.



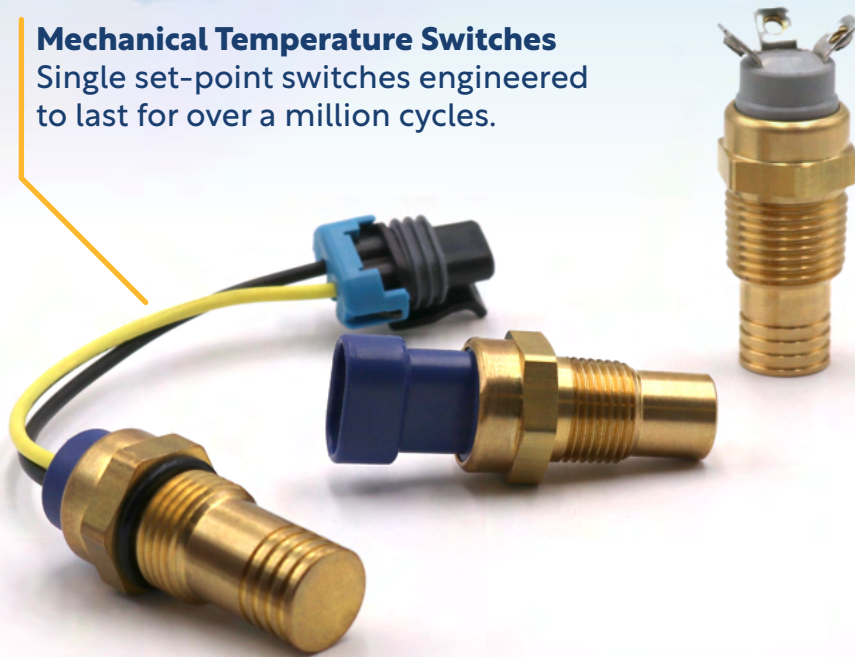


TEMPERATURE SWITCHES

Index offers customizable mechanical and electronic temperature switches with a variety of set and reset-points. Available in both single and multiple outputs.

Mechanical Temperature Switches

Single set-point switches engineered to last for over a million cycles.



Electronic Temperature Switches

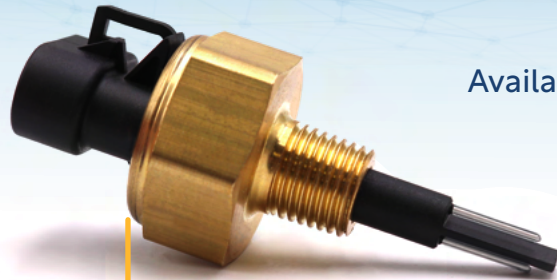
Multiple set-point switches, ideal for engines, transmissions, fuel, and fan control; also available with time delay.



Multiple thread sizes, wire lengths, and connectors available (screw, spade, integrated, or with a wired connector).

LEVEL SENSORS

Index offers capacitive level, resistive level, and water in fuel sensors. These stand-alone devices provide a digital signal reflecting coolant level or water in fuel status.



Resistive Liquid Level Sensors
Designed to offer high sensitivity in conductive fluids.

Available in a 3- or 4-pin Metri-Pack® connector or with an optional adapter harness.



Capacitive Liquid Level Sensors

Covered probe ensures no contact between sensing element and liquid; typically used in non-conductive fluids.

Water in Fuel Sensors

A resistive level sensor optimized for detecting water in oil or diesel fuel.

LEVEL PROBES

Passive devices for either coolant level or water in fuel alerting; requires an external module to function.

Low Coolant Level Probes

Eliminate engine failure caused by faulty coolant level signals.



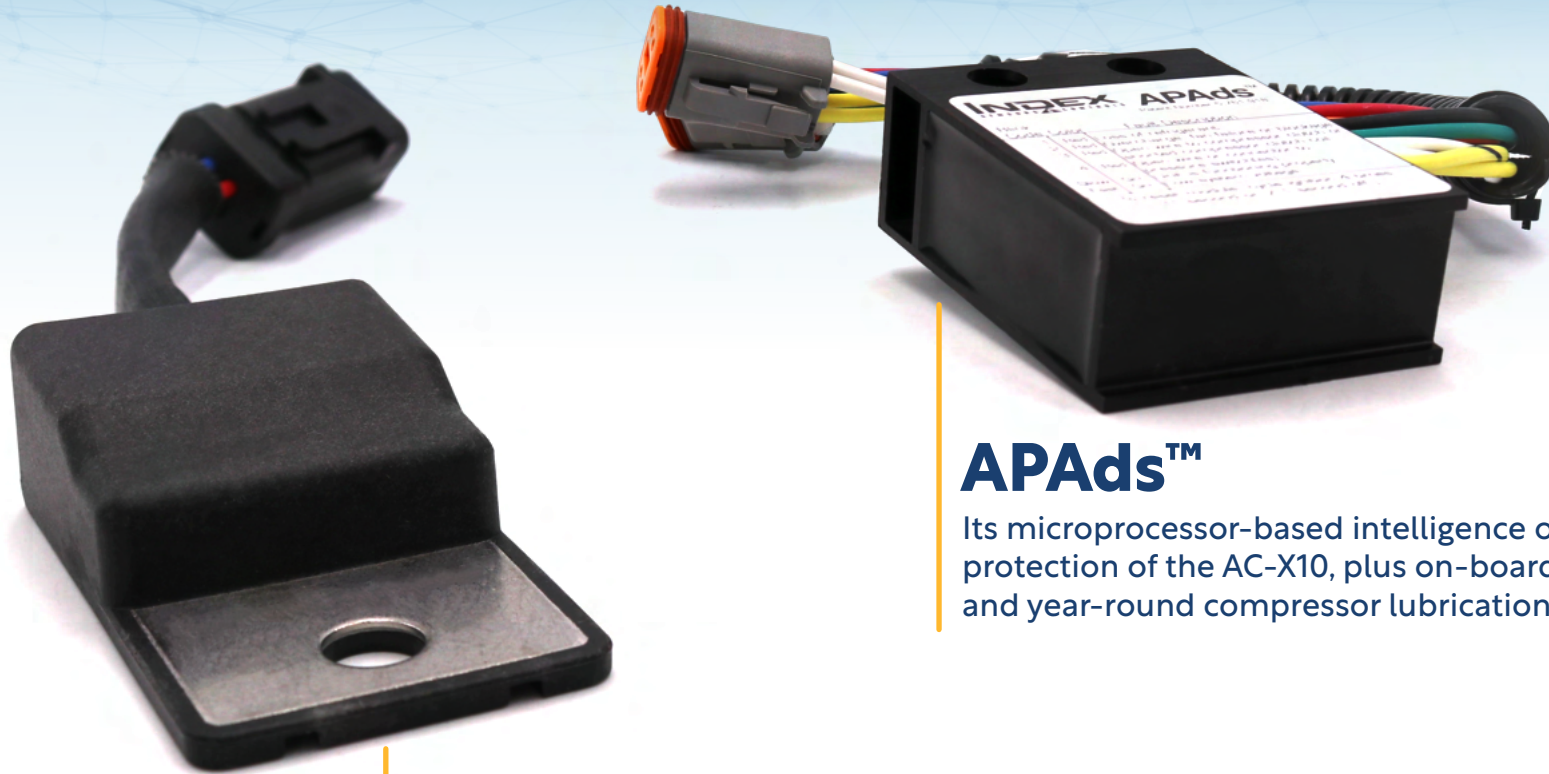
Water in Fuel Probes

Safeguards engine performance by detecting and signalling the presence of water in the fuel system.

Multiple probe lengths, connectors, and thread sizes available.

A/C PROTECTION

Our A/C modules go beyond monitoring conditions of low or high pressure and voltage. They stop damaging events, such as over-cycling within the A/C system.



AC-X10

Detects rapid cycling and protects from under-voltage. The AC-X10 eliminates heat build up as well as delays the A/C clutch engagement to extend the compressor's life.

APAds™

Its microprocessor-based intelligence offers all the protection of the AC-X10, plus on-board diagnostics and year-round compressor lubrication.

POSITION & ABS SENSORS

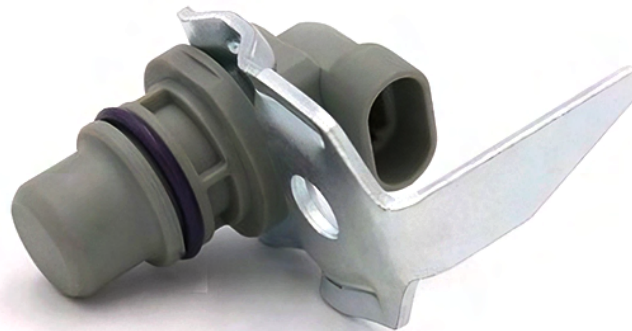
Our quality position and ABS sensors are available for many heavy-duty on and off-road applications.

Upsized cable for increased abrasion resistance.



Robust encapsulation and sealing to protect the internal components from environmental contamination.

Corrosion-resistant coatings and glass filled nylon ensuring long life in harsh environments.



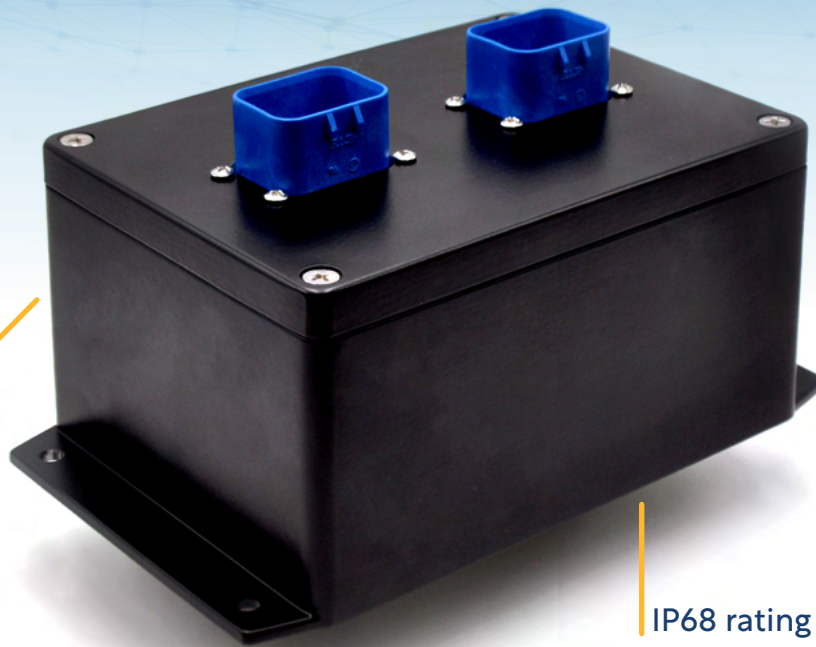
Multiple cable extension options available.



J1939 SENSOR ECM

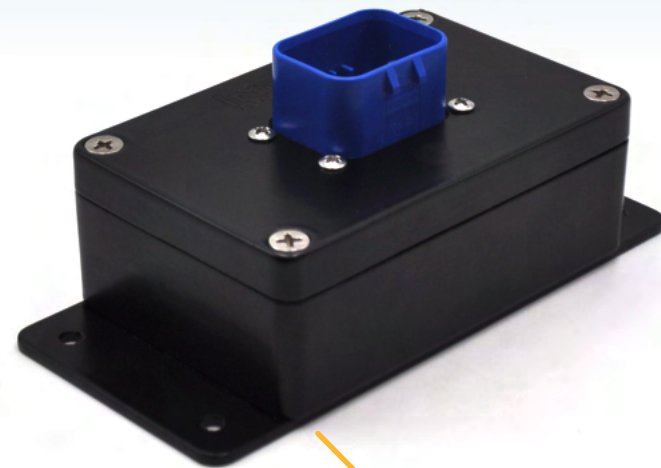
Accepts multiple sensors of all types; our sensor ECM is commonly used to control industrial fans and pumps.

Supports 3–6 sensors (Pressure, Temperature, Level, ABS, Position, PWM, and other CAN or LIN-based devices) in one module and can be expanded using multiple units.



IP68 rating steel housing

Calibratable to any sensor type input including thermistor curves.



Various enclosure sizes available.

J1939 INCLINOMETER

The J1939 Inclinometer provides roll and pitch angles, typically used to measure road grade.

Available in different configurations:

- J1939 250k or 500k baud
- Customizable mounting orientation
- Customizable signal filtering

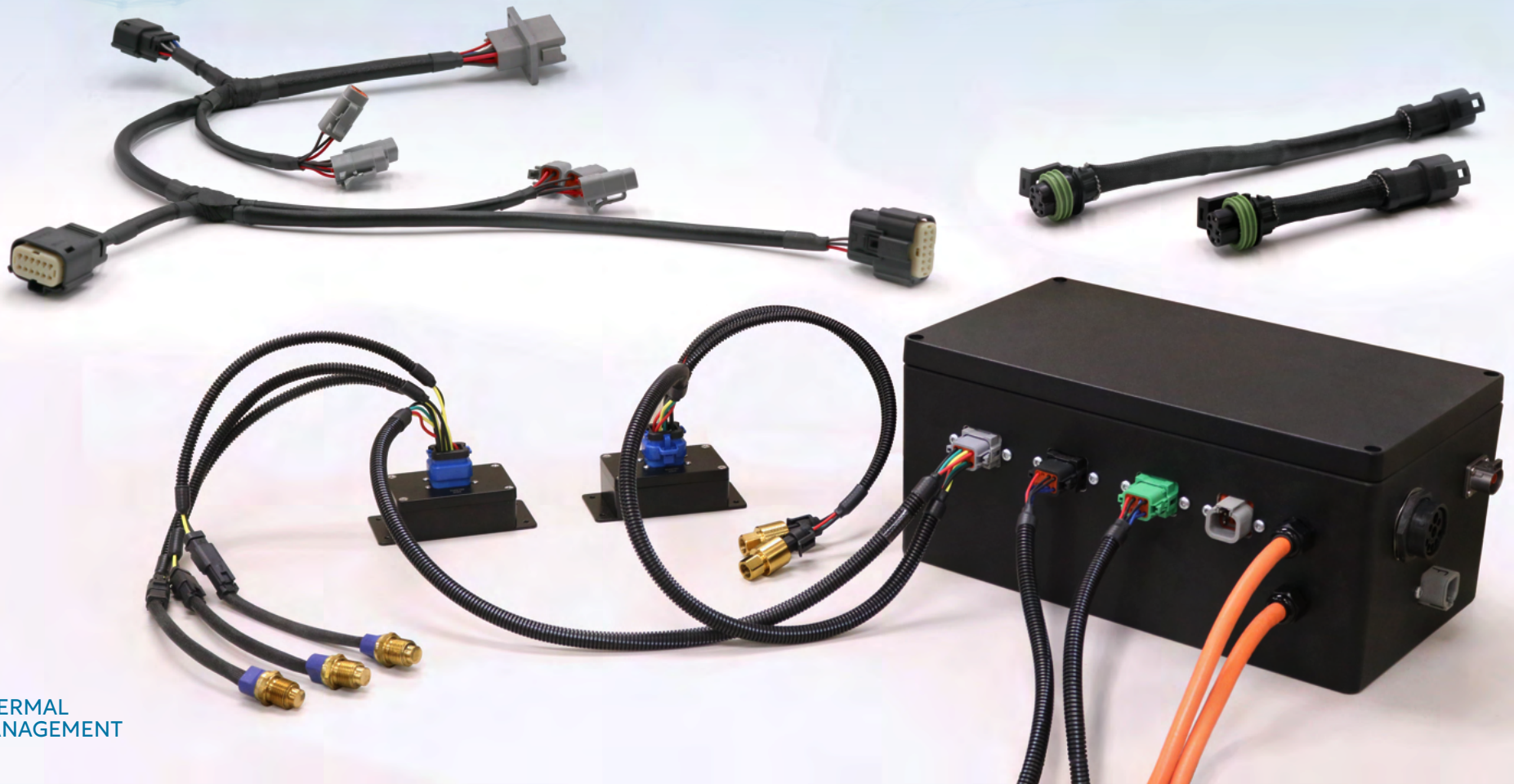
Ruggedized design for external chassis installation.



Proprietary algorithm removes unwanted effects of vehicle vibration and acceleration from the measurement.

THERMAL MANAGEMENT

Index offers turn-key systems for thermal management; including multiplexed sensors, control modules, power distribution, and wiring harnesses. Available with J1939 interfaces and diagnostics for off-road and electric vehicle applications.



PRESSURE SENSORS

CONNECTOR: 3-Pin Weather-Pack



OEM	OEM P/N	INDEX P/N
Detroit Diesel	23528418	8061088

CONNECTOR: 3-Pin Deutsch



OEM	OEM P/N	INDEX P/N
Caterpillar	194-6722	8061097
Caterpillar	194-6724	8061003
Caterpillar	194-6725	8061004
Caterpillar	224-4536	8061006

CONNECTOR: 3-Pin AMPSEAL



OEM	OEM P/N	INDEX P/N
Caterpillar	248-2165	8061018
Caterpillar	248-2169	8061007
Caterpillar	274-6718	8061008
Caterpillar	274-6719	8061009
Caterpillar	284-2728	8061010

CONNECTOR: 3-Pin Metri-Pack



OEM	OEM P/N	INDEX P/N
Cummins	3084521	8061019
Cummins	3330141	8061029
Cummins	4902720	8061060
Cummins	3408377	8061073
Cummins	4921485	8061063
Cummins	4921487	8061026
Cummins	4921493	8061040
Cummins	4921495	8061024
Cummins	4921501	8061020
Cummins	4921511	8061087
Navistar	1807369C2	8061027
Navistar	1830669C92	8061025
Navistar	1839415C91	8061028
Navistar	1840078C1	8061012
Navistar	1846481C92	8061013
Navistar	1850351C1	8061014
Navistar	3C3Z9F838EA	8061076
Navistar	5C3Z9J460B	8061016
Detroit Diesel	23522322	8061064
Detroit Diesel	23532797	8061047

CONNECTOR: 3-Pin APEX



OEM	OEM P/N	INDEX P/N
Detroit Diesel	23527829	8061021
Cummins	2897331	8061057
Cummins	4076493	8061015
Cummins	4921517	8061011
Cummins	4928593	8061077
Cummins	4928594	8061023

CONNECTOR: 4-Pin APEX



OEM	OEM P/N	INDEX P/N
Cummins	2871960	8061022

CONNECTOR: 4-Pin DIN



OEM	OEM P/N	INDEX P/N
Volvo	1077574	8061030
Volvo	21634017	8061054
Volvo	21634021	8061055

TEMPERATURE SENSORS

CONNECTOR: 2-Pin Metri-Pack



OEM	OEM P/N	INDEX P/N
Freightliner	2254800000	8062007
Navistar	1675751C1	8062040
Kenworth	Q21-1002	8062076
Cummins	3085185	8062006
Cummins	3408346	8062053
Cummins	3865312	8062024
Cummins	3865346	8062054
Detroit Diesel	23514708	8062075
Detroit Diesel	23515250	8062030
Detroit Diesel	23515251	8062031
Detroit Diesel	23518092	8062035

CONNECTOR: 2-Pin Deutsch



OEM	OEM P/N	INDEX P/N
Caterpillar	264-4297	8062083

CONNECTOR: 2-Pin APEX



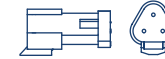
OEM	OEM P/N	INDEX P/N
Detroit Diesel	23527830	8062033
Detroit Diesel	23527831	8062034

CONNECTOR: 2-Pin Aptiv



OEM	OEM P/N	INDEX P/N
Freightliner	VCC83000036	8062077

CONNECTOR: 3-Pin Deutsch



OEM	OEM P/N	INDEX P/N
Caterpillar	102-2240	8062005

CONNECTOR: 4-Pin Deutsch



OEM	OEM P/N	INDEX P/N
Cummins	4921473	8062009
Cummins	4921475	8062003

CONNECTOR: Screw Terminal



OEM	OEM P/N	INDEX P/N
Peterbilt	144455	8062004
Kenworth	144728/K379-12	8062073
Freightliner	147584/00049614	8062072

LEVEL SENSORS

CONNECTOR: 2-Pin Metri-Pack



OEM	OEM P/N	INDEX P/N
Freightliner	06-62384-00	8060005
Detroit Diesel	23520380	8060004
Mack	25174715	8060007

CONNECTOR: 3-Pin Metri-Pack



OEM	OEM P/N	INDEX P/N
Cummins	2872768	8034111
Cummins	2872769	8034111
Cummins	4928568	8034111

CONNECTOR: 4-Pin Metri-Pack



OEM	OEM P/N	INDEX P/N
Freightliner	RSC85927C1	8034114
Navistar	1673785C92	8034114
Cummins	4383932	8034113
Cummins	4903489/3612521	8034112

CONNECTOR: 3-Pin Deutsch



OEM	OEM P/N	INDEX P/N
Caterpillar	430-9449	8041207
Caterpillar	430-9454	8041206

POSITION / ABS SENSORS

CONNECTOR: 2-Pin Cannon



OEM	OEM P/N	INDEX P/N
Bendix	801541	8065000
Bendix	801542	8065085
Haldex	AL919806	8065064
Haldex	919801	8065066
Haldex	919802	8065067
Haldex	919803	8065068
Haldex	919804	8065069
Meritor	R955335	8065001
Meritor	R955336	8065073
Meritor	R955338	8065082
Meritor	R955341	8065081
Meritor	R955342	8065002
Meritor	R955329	8065013
Meritor	R955608	8065087
Meritor	S4410321840	8065059
Meritor	S4410323810	8065052
Meritor	S4497130300	8065063
Meritor	S4497130500	8065065

CONNECTOR: 2-Pin Aptiv



OEM	OEM P/N	INDEX P/N
Navistar	1835985C92	8065024

CONNECTOR: 2-Pin DIN



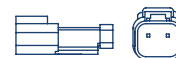
OEM	OEM P/N	INDEX P/N
Volvo	21508269	8060003

CONNECTOR: 2-Pin Metri-Pack



OEM	OEM P/N	INDEX P/N
Mack	25166488	8065012
Caterpillar	245-4630	8065010
Cummins	4921599	8065007
Detroit Diesel	8929387	8065005
Detroit Diesel	8929388	8065008
Navistar	1807339C92	8065004
Navistar	1876735C91	8065029
Navistar	1876736C91	8065030
Navistar	1885812C91	8065006

CONNECTOR: 2-Pin Deutsch



OEM	OEM P/N	INDEX P/N
Caterpillar	2016615	8065009
Bendix	801549	8065079
Bendix	801550	8065083
Bendix	801551	8065074
Bendix	801552	8065084
Bendix	801553	8065075

CONNECTOR: 2-Pin Deutsch



OEM	OEM P/N	INDEX P/N
Bendix	801545	8065070
Bendix	801546	8065077
Bendix	801547	8065071
Bendix	801548	8065076
Bendix	801563	8065078

CONNECTOR: 2-Pin APEX



OEM	OEM P/N	INDEX P/N
Detroit Diesel	23527338	8065021

CONNECTOR: 3-Pin APEX



OEM	OEM P/N	INDEX P/N
Cummins	2872277	8065025

CONNECTOR: 3-Pin Bosch



OEM	OEM P/N	INDEX P/N
Mack	20706327	8065011

CONNECTOR: 4-Pin Weather-Pack



OEM	OEM P/N	INDEX P/N
Cummins	4984223	8065003

MECHANICAL PRESSURE SWITCHES

All parts are sorted by thread size.

A/C Pressure Switches: R12 Refrigerant Systems

High Pressure Cutout Switches - 1/4" Flare Fitting

SET	RESET	MODE	CONNECTOR	EQUIVALENTS	INDEX P/N
310	220	NC	Weather-Pack		8040225
335	245	NC	Metri-Pack	Mack 1MR2463 / 1MR2451	8040316
350	300	NC	Weather-Pack		8040171

Fan Trigger Switches - 1/4" Flare Fitting

SET	RESET	MODE	CONNECTOR	EQUIVALENTS	INDEX P/N
39	39	NO	Flying Leads	Kysor 2299010 Red Dot 71R6040	8040201
250	250	NC	Weather-Pack	Red Dot 71R6402	8040230
275	235	NC	Deutsch		8040082
275	235	NC	Weather-Pack	Mack 1MR2456	8040243
275	235	NC	Weather-Pack	Navistar 1622648C91	8040231
300	260	NC	Weather-Pack		8040307
300	260	NO	Weather-Pack		8040313
300	300	NC	Deutsch	Red Dot RD5-10008	8040088

Heavy-Duty Pressure Switches for Cummins® Applications

1/4" NPT Housing

SET	RESET	MODE	CONNECTOR	EQUIVALENTS	INDEX P/N
35	25	CO	Metri-Pack	Cummins 3408609	8040410
53	23	CO	Metri-Pack	Cummins 3408606	8040409

1/8" NPT Housing

SET	RESET	MODE	CONNECTOR	EQUIVALENTS	INDEX P/N
14	6	CO	Metri-Pack	Cummins 3408612 / 2897694	8040400
16	12	CO	Metri-Pack	Cummins 3408607 / 2897691	8040351
18	10	CO	Metri-Pack	Cummins 3408613 / 2897695	8040424
21	18	CO	Metri-Pack	Cummins 3408608 / 2897692	8040399
30	20	CO	Metri-Pack	Cummins 3408614 / 4307059	8040426
35	25	CO	Metri-Pack	Cummins 3408619 / 2897696	8040406

With over 2,000 SKUs, many other parts are available - call or email for more information.

A/C Pressure Switches: R134a Refrigerant Systems

High Pressure Cutout Switches - M10 Female Schrader Fitting

SET	RESET	MODE	CONNECTOR	EQUIVALENTS	INDEX P/N
300	260	NC	Metri-Pack	Volvo 3939317	8040135
300	300	NC	Metri-Pack	Navistar 2501256C1	8040177
325	275	NC	Weather-Pack		8040172
325	275	NC	Weather-Pack		8040312
325	275	NC	Metri-Pack	Volvo 3948747	8040277
325	275	NC	Metri-Pack	Volvo 3948744 Mack 1MR3562	8040239
335	245	NC	Metri-Pack	Mack 1MR3594M	8040317

Fan Trigger Switches - M10 Female Schrader Fitting

SET	RESET	MODE	CONNECTOR	EQUIVALENTS	INDEX P/N
275	235	NO	Weather-Pack		8040315
275	235	NC	Deutsch	Volvo 3948748 / 3949500	8040235
275	235	NC	Weather-Pack		8040314
300	260	NC	Weather-Pack		8040164

Low Pressure Cutout Switches - M12 Female Schrader Fitting

SET	RESET	MODE	CONNECTOR	EQUIVALENTS	INDEX P/N
34	10	NO	Weather-Pack		8040321
34	10	NO	Metri-Pack	Volvo 8025565 Mack 1MR3561	8040281
34	8	NC	Metri-Pack	Volvo 3966805	8040189
34	34	NC	Metri-Pack	Volvo 20437760 Navistar 1699310C1 Cat 232-8506	8040136
34	34	NC	Metri-Pack	Navistar 2501257C1 Volvo 3966805	8040178
40	32	NO	Metri-Pack	Volvo 3948749	8040282
47	25	NO	Weather-Pack		8040318
47	25	NC	Weather-Pack		8040194

MECHANICAL PRESSURE SWITCHES

All parts are sorted by thread size.

Multi-purpose Pressure Switches: Specified by Rising Set Point

1/4" NPT Housing

SET	RESET	MODE	CONNECTOR	INDEX P/N
9	7	CO	Weather-Pack	8040262
14	8	CO	Weather-Pack	8040280
35	25	CO	Weather-Pack	8040254

1/8" NPT Housing

SET	RESET	MODE	CONNECTOR	INDEX P/N
4	2	NO	Metri-Pack	8040490
5	2	NC	Metri-Pack	8040470
5	2	NO	Metri-Pack	8040471
7	4	NO	Metri-Pack	8040491
8	4	NO	Ring Terminals	8040311
10	5	NC	Metri-Pack	8040472
10	5	NO	Metri-Pack	8040473
14	8	CO	Weather-Pack	8040257
20	10	NC	Metri-Pack	8040474
20	10	NO	Metri-Pack	8040475
35	25	NC	Metri-Pack	8040476
35	25	NO	Metri-Pack	8040477
60	50	NO	Metri-Pack	8040215
60	50	NO	Weather-Pack	8040216
60	50	NC	Metri-Pack	8040478
60	50	NO	Metri-Pack	8040479
85	75	NC	Metri-Pack	8040480
85	75	NO	Metri-Pack	8040481
100	85	CO	Weather-Pack	8040256
115	90	NC	Metri-Pack	8040482
115	90	NO	Metri-Pack	8040483
135	105	NC	Metri-Pack	8040484
135	105	NO	Metri-Pack	8040485

With over 2,000 SKUs, many other parts are available - call or email for more information.

Multi-purpose Pressure Switches: Specified by Falling Reset Point

1/4" NPT Housing

SET	RESET	MODE	CONNECTOR	INDEX P/N
14	6	NC	Metri-Pack	8040224
14	6	CO	Weather-Pack	8040258
18	10	CO	Weather-Pack	8040260
18	10	NC	Weather-Pack	8040223
75	65	NC	Metri-Pack	8040237
85	75	NC	Metri-Pack	8040238

1/8" NPT Housing

SET	RESET	MODE	CONNECTOR	INDEX P/N
12	6	NC	Weather-Pack	8040310
15	6	CO	Flying Lead	8040265
15	6	CO	Flying Lead	8040250
15	7	NO	Tab Connector	8040218
16	8	CO	Weather-Pack	8040263
16	10	NC	Weather-Pack	8040272
18	10	NC	Weather-Pack	8040212
25	15	CO	Flying Leads	8040251
25	15	CO	Tab Connector	8040268
25	15	NC	Weather-Pack	8040221
55	40	NC	Flying Leads	8040246
75	60	CO	Flying Leads	8040266
75	60	CO	Flying Leads	8040252
90	65	CO	Weather-Pack	8040255
150	120	NC	Flying Leads	8040245

ELECTRONIC TEMPERATURE SWITCHES

All parts are sorted by thread size.

Single- and Dual-Function Temperature Switches

1/2" NPT Housing

FUNCTION 1 SET POINT	MODE	FUNCTION 2 SET POINT	MODE	OUTPUT	CONNECTOR	EQUIVALENTS	INDEX P/N
060	NC			Sourcing	Metri-Pack		8036128
080	NC			Sourcing	Metri-Pack		8036043
150	NC			Sourcing	Weather-Pack	Navistar 1621011C91	8036157
150	NO			Sourcing	Weather-Pack		8036152
160	NO	200	NO	Sinking	Metri-Pack		8036201
172	NC	187	NC	Sinking	Metri-Pack		8036217
172	NC	187	NO	Sinking	Metri-Pack		8036216
185	NC			Sourcing	Metri-Pack		8036200
185	NC			Sourcing	Weather-Pack	Navistar 1621007C92	8036052
185	NC	195	NC	Sourcing	Weather-Pack	Navistar 1621005C91	8036143
185	NC	195	NC	Sourcing	Flying Leads	Navistar 1985130C91	8036142
195	NC	210	NC	Sinking	Metri-Pack		8036158
200	NO	215	NO	Sinking	Weather-Pack		8036198
200	NC			Sinking	Weather-Pack	Navistar 1516893C91	8036023
200	NO			Sinking	Weather-Pack		8036205
200	NO			Sinking	Weather-Pack		8036206
200	CO			Sourcing	Screw Terminals		8036178
200	NC			Sourcing	Weather-Pack		8036061
205	NC			Sourcing	Metri-Pack	Volvo 3942759	8036167
205	NC			Sourcing	Weather-Pack		8036056
205	NO			Sourcing	Weather-Pack	Navistar 2016585C91	8036058
215	NO	220	NC	Sinking	None – bare wire		8036213

Cooling Fan Timer Temperature Control Switches

1/2" NPT Housing

SET	MODE	OUTPUT	CONNECTOR	EQUIVALENTS	INDEX P/N
180	NC	Sourcing	Weather-Pack	Navistar 1688070C91	8036076
195	NC	Sourcing	Deutsch	Volvo 3940177	8036165
195	NO	Sourcing	Deutsch Plug		8036100
200	NC	Sourcing	Deutsch	Ford F3HT-10B843-SA	8036083
200	NC	Sourcing	Weather-Pack		8036078
200	NC	Sourcing	Weather-Pack	Navistar 2011857C91	8036077
200	NO	Sourcing	Weather-Pack		8036070
200	NO	Sourcing	Weather-Pack	Navistar 2027243C1	8036071
200	NO	Sourcing	Deutsch		8036101
205	NC	Sourcing	Weather-Pack		8036080
205	NC	Sourcing	Weather-Pack	Mack 1MR6546M	8036081
205	NC	Sourcing	Weather-Pack	Navistar 1622647C91	8036079
205	NC	Sourcing	Deutsch		8036087
205	NC	Sourcing	Deutsch	Volvo 3942809	8036169
205	NC	Sourcing	Deutsch	Volvo 3942917	8036168
205	NO	Sourcing	Weather-Pack		8036073
205	NO	Sourcing	Deutsch		8036103
205	NO	Sourcing	Deutsch		8036094
209	NO	Sourcing	Deutsch		8036105

Air-sensing Fan Drivers w/ Fast-response Tip

1/2" NPT Housing

SET	MODE	OUTPUT	CONNECTOR	INDEX P/N
150	NC	Sinking	Deutsch	8036154
150	NC	Sourcing	Weather-Pack	8036186
190	NO	Sourcing	Deutsch	8036098

With over 2,000 SKUs, many other parts are available - call or email for more information.

MECHANICAL TEMPERATURE SWITCHES

All parts are sorted by thread size.

Heavy-Duty Temperature Switches

Three Terminals – 3/8" NPT Housing

TEMP	MODE	CONNECTOR	EQUIVALENTS	INDEX P/N
140	NC	8-32 Screw	Medallion 1002-04880-20	8037142
160	CO	8-32 Screw	Medallion 1002-04880-24	8037090
180	CO	8-32 Screw	Medallion 1002-04880-28	8037175
185	CO	8-32 Screw	Medallion 1002-04880-29	8037176
190	CO	8-32 Screw	Medallion 1002-04880-30 / 1002-07955-30	8037177
195	CO	8-32 Screw	Medallion 1002-04880-31 / 1002-07955-31	8037093
200	CO	8-32 Screw	Medallion 1002-04880-32 / 1002-07955-32	8037178
205	CO	8-32 Screw	Medallion 1002-04880-33 / 1002-07955-33	8037179
210	CO	8-32 Screw	Medallion 1002-04880-34 / 1002-07955-34	8037180
215	CO	8-32 Screw	Medallion 1002-04880-35 / 1002-07955-35	8037098
220	CO	8-32 Screw	Medallion 1002-04880-36 / 1002-07955-36	8037099
225	CO	8-32 Screw	Medallion 1002-04880-37 / 1002-07955-37	8037126
240	CO	8-32 Screw	Medallion 1002-04880-40 / 1002-07955-40	8037127
250	CO	8-32 Screw	Medallion 1002-04880-42 / 1002-07955-42	8037224
255	CO	8-32 Screw	Medallion 1002-04880-43	8037181

Three Terminals – 1/2" NPT Housing

TEMP	MODE	CONNECTOR	EQUIVALENTS	INDEX P/N
180	CO	8-32 Screw		8037044
185	CO	8-32 Screw	Nav 1685131C92	8037045
190	CO	8-32 Screw		8037048
195	CO	8-32 Screw	Nav 1685132C92	8037050
200	CO	8-32 Screw		8037053
205	CO	8-32 Screw	Nav 1685171C92	8037055
210	CO	Weather-Pack		8037228
220	CO	8-32 Screw		8037061

Two Terminals – 3/8" NPT Housing

TEMP	MODE	CONNECTOR	EQUIVALENTS	INDEX P/N
180	NO	8-32 Screw	Medallion 1002-05825-28	8037183
195	NO	8-32 Screw	Horton P-1602 / 983624 / 993610	8037082
220	NO	Weather-Pack		8037163
250	NO	Weather-Pack		8037169
150	NC	8-32 Screw	Medallion 1002-07393-22 / 1002-07479-22	8037121

Temperature Switches for Cummins® Applications

Three Terminals – 1/2" NPT Housing

TEMP	MODE	CONNECTOR	EQUIVALENTS	INDEX P/N
90	CO	Metri-Pack	Cummins 3408645	8037317
100	NO	Metri-Pack	Cummins 3408624	8037318
150	CO	Metri-Pack	Cummins 3408634	8037372
160	CO	Metri-Pack	Cummins 3408643	8037316
185	CO	Metri-Pack	Cummins 3408639	8037322
200	CO	Metri-Pack	Cummins 3408632	8037375
200	CO	Metri-Pack	Cummins 3408636	8037380
210	CO	Metri-Pack	Cummins 3408625	8037445
215	CO	Metri-Pack	Cummins 3408626	8037319
215	CO	Metri-Pack	Cummins 3408629	8037374
205	CO	Metri-Pack	Cummins 3408631	8037321
223	CO	Metri-Pack	Cummins 4954948	8037429
223	CO	Metri-Pack	Cummins 3408627	8037320
223	NO	Metri-Pack	Cummins 3408635	8037377

With over 2,000 SKUs, many other parts are available - call or email for more information.

MECHANICAL TEMPERATURE SWITCHES

All parts are sorted by thread size.

Heavy-Duty Temperature Switches

Two Terminals – 1/2" NPT Housing

TEMP	MODE	CONNECTOR	EQUIVALENTS	INDEX P/N
105	NO	8-32 Screw	Horton 15949	8037106
120	NO	8-32 Screw	Medallion 1002-05850-16	8037134
150	NO	8-32 Screw	Medallion 1002-05554-22 Old Kysor 1002-05850-22 Horton 993662 / 15953	8037013
160	NO	8-32 Screw	Horton 993656 / 16452	8037332
165	NO	8-32 Screw	Medallion 1002-05554-25 Old Kysor 1002-05850-25	8037108
180	NO	8-32 Screw	Medallion 1002-05554-28 Old Kysor 1002-05850-28 Horton 993615 / 15944	8037014
185	NO	8-32 Screw	Medallion 1002-05554-29 / 1002-07988-29 Old Kysor 1002-05850-29 Horton 993616 / 15942	8037018
190	NO	8-32 Screw	Medallion 1002-05554-30 / 1002-07988-30 Old Kysor 1002-05850-30 Horton 993617 / 15943	8037022
195	NO	8-32 Screw	Medallion 1002-05554-31 / 1002-07988-31 Old Kysor 1002-05850-31 Horton 993653 / 15957	8037026
200	NO	8-32 Screw	Medallion 1002-05554-32 / 1002-07988-32 Old Kysor 1002-05850-32 Horton 993654 / 15954	8037030
200	NO	Metri-Pack		8037225
205	NO	8-32 Screw	Medallion 1002-05554-33 / 1002-07988-33 Old Kysor 1002-05850-33 Horton 993655 / 15940 / 15954	8037034
210	NO	8-32 Screw	Medallion 1002-05554-34 / 1002-07988-34 Old Kysor 1002-05850-34 Horton 993624 / 15947	8037037
215	NO	8-32 Screw	Medallion 1002-05554-35 / 1002-07988-35 Old Kysor 1002-05850-35 Horton 993625 / 15945	8037184
220	NO	8-32 Screw	Medallion 1002-05554-36 / 1002-07988-36 Old Kysor 1002-05850-36 Horton 993626 / 15948	8037041
250	NO	8-32 Screw	Medallion 1002-05554-42 Old Kysor 1002-05850-42	8037111
300	NO	8-32 Screw	Medallion 1002-05554-52 Old Kysor 1002-05850-52 Horton 15946	8037112
165	NC	8-32 Screw	Medallion 1002-07393-25	8037107
185	NC	8-32 Screw	Medallion 1002-07393-29 / 1002-07479-29 Horton 993619 / 15952	8037016
190	NC	8-32 Screw	Medallion 1002-07393-30 / 1002-07479-30 Horton 993603 / 15939	8037020
195	NC	8-32 Screw	Medallion 1002-07393-31 / 1002-07479-31 Horton 993605 / 15949	8037024
200	NC	Metri-Pack		8037188
200	NC	8-32 Screw	Medallion 1002-07393-32 / 1002-07479-32 Horton 993606 / 15941	8037028
205	NC	8-32 Screw	Medallion 1002-07393-33 / 1002-07479-33 Horton 993607 / 15940	8037032
210	NC	8-32 Screw	Medallion 1002-07393-34 / 1002-07479-34	8037036
215	NC	8-32 Screw	Medallion 1002-07393-35 / 1002-07479-35 Horton 993665	8037039
220	NC	8-32 Screw	Medallion 1002-07393-36 / 1002-07479-36	8037040

With over 2,000 SKUs, many other parts are available - call or email for more information.

MECHANICAL TEMPERATURE SWITCHES

All parts are sorted by thread size.

Overtemp Warning Switches

One Terminal – 1/2" NPT Housing

TEMP	MODE	CONNECTOR	EQUIVALENTS	INDEX P/N
160	NO	8-32 Screw		8039076
180	NO	8-32 Screw	Medallion 1002-05511-28 / 1002-07690-28 / 1002-07324-28	8039057
190	NO	8-32 Screw	Medallion 1002-05511-30 / 1002-07690-30 / 1002-07324-30	8039058
195	NO	8-32 Screw	Medallion 1002-05511-31 / 1002-07690-31 / 1002-07324-31	8039064
200	NO	8-32 Screw	Medallion 1002-05511-32 / 1002-07690-32 / 1002-07324-32	8039065
205	NO	8-32 Screw	Medallion 1002-05511-33 / 1002-07690-33 / 1002-07324-33	8039054
210	NO	8-32 Screw	Medallion 1002-05511-34 / 1002-07690-34 / 1002-07324-34	8039014
215	NO	8-32 Screw	Medallion 1002-05511-35 / 1002-07690-35 / 1002-07324-35	8039019
220	NO	8-32 Screw	Medallion 1002-05511-36 / 1002-07690-36 / 1002-07324-36	8039023
225	NO	8-32 Screw	Medallion 1002-05511-37 / 1002-07690-37 / 1002-07324-37	8039025
230	NO	8-32 Screw	Medallion 1002-05511-38 / 1002-07690-38 / 1002-07324-38	8039026
250	NO	8-32 Screw	Medallion 1002-05511-42 / 1002-07690-42 / 1002-07324-42	8039066
260	NO	1/4" Spade		8039078
300	NO	8-32 Screw	Medallion 1002-05511-52 / 1002-07690-52 / 1002-07324-52	8039029
185	NC	8-32 Screw	Thomas 61230658	8039050
190	NC	8-32 Screw	Medallion 1002-05768-30 / 1002-07474-30 / 1002-07449-30	8039010
195	NC	8-32 Screw	Medallion 1002-05768-31 / 1002-07474-31 / 1002-07449-31	8039056
200	NC	8-32 Screw	Medallion 1002-05768-32 / 1002-07474-32 / 1002-07449-32	8039067
205	NC	8-32 Screw	Medallion 1002-05768-33 / 1002-07474-33 / 1002-07449-33	8039068
210	NC	8-32 Screw	Medallion 1002-05768-34 / 1002-07474-34 / 1002-07449-34	8039012
215	NC	8-32 Screw	Medallion 1002-05768-35 / 1002-07474-35 / 1002-07449-35	8039017
220	NC	8-32 Screw	Medallion 1002-05768-36 / 1002-07474-36 / 1002-07449-36	8039021

One Terminal – 3/8" NPT Housing

TEMP	MODE	CONNECTOR	EQUIVALENTS	INDEX P/N
165	NO	8-32 Screw	Medallion 1002-05811-25	8039059
190	NO	8-32 Screw	Medallion 1002-05811-30 / 1002-07700-30 / 1002-07450-30	8039071
200	NO	8-32 Screw	Medallion 1002-05811-32 / 1002-07700-32 / 1002-07450-32	8039032
205	NO	8-32 Screw	Medallion 1002-05811-33 / 1002-07700-33 / 1002-07450-33	8039051
210	NO	8-32 Screw	Medallion 1002-05811-34 / 1002-07700-34 / 1002-07450-34	8039034
215	NO	8-32 Screw	Medallion 1002-05811-35 / 1002-07700-35 / 1002-07450-35	8039052
220	NO	8-32 Screw	Medallion 1002-05811-36 / 1002-07700-36 / 1002-07450-36	8039039
225	NO	8-32 Screw	Medallion 1002-05811-37 / 1002-07700-37 / 1002-07450-37	8039041
230	NO	8-32 Screw	Medallion 1002-05811-38 / 1002-07700-38 / 1002-07450-38	8039042
250	NO	8-32 Screw	Medallion 1002-05811-42 / 1002-07700-42 / 1002-07450-42	8039045
300	NO	8-32 Screw	Medallion 1002-05811-52 / 1002-07700-52 / 1002-07450-52	8039072
200	NC	8-32 Screw	Thomas 61230646	8039031
205	NC	8-32 Screw	Medallion 1002-05769-33 / 1002-07338-33 / 1002-07476-33	8039069
210	NC	8-32 Screw	Medallion 1002-05769-34 / 1002-07338-34 / 1002-07476-34	8039070
220	NC	8-32 Screw	Medallion 1002-05769-36 / 1002-07338-36 / 1002-07476-36	8039053

With over 2,000 SKUs, many other parts are available - call or email for more information.

LIQUID LEVEL PROBES

All parts are sorted by thread size.

Low Coolant Level Probes

3/8" - NPT Housing

CONNECTOR	EQUIVALENTS	INDEX P/N
Screw Terminal	Medallion 5022-33990-01 Kysor 5022-01187-01	8034100

1/4" - NPT Housing

CONNECTOR	EQUIVALENTS	INDEX P/N
Screw Terminal	Medallion 5022-33670-03 Kysor 5022-01185-01	8034101
Deutsch		8034109

Water-in-Fuel

1/4" - NPT Housing

CONNECTOR	INDEX P/N
Deutsch	8034107

A/C PROTECTION

APAds™

CONNECTOR	EQUIVALENTS	NOTES	MODULE P/N (SERVICE PARTS)	LOW PRESSURE SWITCH P/N (SERVICE PARTS)	HIGH PRESSURE SWITCH P/N (SERVICE PARTS)
Deutsch	Volvo/Mack 25157068	-	8042105	8040189	8040135
Deutsch	Volvo/Mack 25159381	For Viscous Fan Drives	8042124	8040189	8040172
Metri-Pack	Volvo/Mack 20579815	-	8042152	8040189	8040135
Deutsch	Generic	For On/Off Fan Drives	8042103	8040189	8040135

ACX-10

CONNECTOR	NOTES	INDEX P/N
Weather-Pack	ACX-10 Kit	8041188
Weather-Pack	12V, ISC	8042167
Weather-Pack	12V, ISX	8042168
Weather-Pack	12V	8042169
Metri-Pack	12V	8042171
AMP	24V	8042173
Deutsch	12V	8042178

With over 2,000 SKUs, many other parts are available - call or email for more information.

LIMITED PRODUCT WARRANTY INFORMATION

Index warrants all of its products to be free from defects in material and workmanship under normal use and service. Any part which proves to be defective in material or workmanship within the Warranty period covering the specific product to which the Warranty applies as specified below, will be repaired or replaced, at Index's option, with a new or functionally operative part.

General Conditions

INDEX's liability under this Limited Warranty shall be limited to repairing or replacing at its own factory or through an authorized service distributor or dealer, material which is determined by INDEX to have been defective in manufacture and upon which a claim has been made by the original purchaser or user to Index (or an authorized distributor or dealer) within the Warranty period. Claims under this Limited Warranty will be honored only if the product is returned within 90 days of the date that the part was determined to be defective. INDEX specifically assumes no responsibility for labor charges unless prior authorization has been granted before the labor has been performed. Approved return of parts or products will be on a prepaid transportation charge basis only and non-defective products will be returned collect. Claims under this Limited Warranty will be honored only upon return of product and INDEX's determination that the claim is covered by this Limited Warranty, and Index shall incur no obligation under this Limited Warranty prior to such determination. This Limited Warranty does not apply to any device or component which has been (i) altered or repaired, except by INDEX or its authorized representatives ; (ii) subject to misuses, negligence, or accident, including, without limitation, use and operation of such machinery or equipment while any parts are loose, broken, out of order, or damaged by the elements, or (iii) used for a purpose for which it was not designed or used in conjunction with other products not approved for use by INDEX, or (iv) rendered inoperative due to miswiring or due to broken wires, or related connectors. Parts replaced under this Limited Warranty are warranted only through the remainder of the original Limited Warranty. Any and all claims for Warranty service must include such information as Index designates, and shall include specifically the part number and date code of each unit (if appropriate).

Recovery Payment Terms (Parts, Labor, Freight)

Parts: Parts returned and verified as failed, by Index, are reimbursed at sales price

Labor: Labor is reimbursed by applying a standard shop rate of \$125/hour x ½ hour/unit

Freight: Index reimburses actual freight costs on parts returned and verified as failed

THIS LIMITED WARRANTY IS IN LIEU OF ALL OTHER WARRANTIES, EXPRESSED OR IMPLIED OR STATUTORY, INCLUDING, BUT NOT LIMITED TO, ANY WARRANTY OF MERCHANTABILITY OR FITNESS OF PURPOSE AND ALL OTHER OBLIGATIONS OR LIABILITIES OF INDEX, INCLUDING ANY TORT LIABILITY FOR NEGLIGENT DESIGN OR MANUFACTURE OF THE PRODUCT, OR OTHERWISE.

THIS WARRANTY DOES NOT COVER CONSEQUENTIAL DAMAGES. IN NO EVENT WILL INDEX BE LIABLE TO BUYER FOR LOSS OF PROFITS, LOSS OF USE, OR DAMAGES OF ANY KIND BASED UPON A CLAIM FOR BREACH OF WARRANTY. INDEX EXPRESSLY DENIES ANY WARRANTY, EXPRESSED OR IMPLIED OF FITNESS FOR PURPOSE OR OF MERCHANTABILITY WHERE THE SPECIFIED DESIGN OF THE PRODUCT IS ESTABLISHED BY THE PURCHASER OR INDEX DOES NOT HAVE INTIMATE KNOWLEDGE OF THE INTENDED PURPOSE AND APPLICATION.

INDEX SHALL NOT BE LIABLE UNDER ANY CIRCUMSTANCES FOR ANY INCIDENTAL OF CONSEQUENTIAL DAMAGES, AS THOSE TERMS ARE DEFINED IN THE UNIFORM COMMERCIAL CODE. THE FOREGOING SHALL CONSTITUTE THE SOLE AND EXCLUSIVE LIABILITY OF INDEX IN CONNECTION WITH ITS PRODUCTS.

Warranty Periods

Unless otherwise documented, INDEX products are warranted for a period of **two (2) years** from the date of installation. If the date of installation or resale cannot be documented, the date of installation will be assumed to be ninety days after the manufacturing date coded on the product.



Supplying products and designing custom solutions
for heavy-duty on and off-road applications.
Giving you **Solutions that Make Sense.**

(800) 726 - 1737

sales@indexsensors.com

www.indexsensors.com

17212 51st Ave NE Suite 116 Arlington, WA 98223

