



# Annual Report

## Ben Gurion International Airport

Year 2021



# Israel Airport Authority

## Ben Gurion International Airport

### Produced by the Industry & Management Department

**This report is protected by copyright and is the exclusive property of the Israel Airports Authority.**

**It must be emphasized that the data in the report are based on the reports of the airlines, and received under their responsibility.**

**The information is intended for personal use, and therefore may not be quoted or passed on to any third party without written permission from the Israel Airports Authority.**

**In addition, no commercial use may be made of this report.**

#### **Edit Yehoshua**

Activity Coordinator

Tel. +972-3-9752017

Email: [edity@iaa.gov.il](mailto:edity@iaa.gov.il)

#### **Rachel Lehava**

Manager, Industrial & Management Dep.

Tel. +972-3-9752019

Email: [rachelle@iaa.gov.il](mailto:rachelle@iaa.gov.il)

#### **Yossi Tzemach**

Head, Industrial & Management Dep.

Tel. +972-3-9752020

Email: [yossiz@iaa.gov.il](mailto:yossiz@iaa.gov.il)



Dear friends and partners,

The year 2021 was a direct continuation of the global crisis which had struck us in 2020 following the outbreak of COVID-19 and the spread of morbidity worldwide.

The COVID-19 crisis dramatically affected the scope of traffic in 2021.

The year was characterized by dealing with three waves of morbidity, culminating in the year's first quarter.

On the other hand, this year we have observed the beginning of aviation recovery and, starting in May, have already observed persistent growth in passenger and plane traffic which abated at the start of the current (fifth) wave.

International passenger and plane traffic this year amounted to 6,088,107 passengers.

This scope of traffic constitutes approximately 25 percent of the total traffic in 2019.

During the year, we made adaptations to the entering passenger and exiting passenger processes according to the regulatory guideline issued by the Ministry of Health and the Covid-19 cabinet.

The goal of adapting the processes is to minimize the entry of variants of the virus into the State of Israel through Ben Gurion International Airport. The numbers indicate that we have been able to maintain a very small percentage of verified patients entering through the airport, one much lower than the data and morbidity percentages among the public.

This year, most foreign airlines have resumed operation in addition to the Israeli airlines, attesting to the level of the international airlines' trust in Ben Gurion International Airport.

Commerce at the airport has resumed full operation and has led to improved results among the concessioners and activity partners.

Foreign passenger traffic has resumed operation this year at a low profile but under a special outline for groups and single passengers.

Our level of performance and commitment as employees, managers, airlines, activity partners, ground handling services and concessioners is remarkable, seeing as the level of coordination and collaboration among all the entities working in the Ben Gurion International Airport precinct is highly esteemed by government entities in Israel and worldwide.

I would like to express my thanks and gratitude for this collaboration.

On my own behalf and on that of Ben Gurion International Airport's management, I wish good health to everyone operating in the airport's precinct, passengers, employees and their families. Together we will continue to work professionally and diligently to protect public health, bring about aviation recovery, ensure functional continuity and preserve Israel's aviation connection to the world.

Sincerely yours,

Shmuel Zakay

Managing Director,

Ben-Gurion International Airport





Dear friends and partners,

I hereby respectfully submit for your review a report summarizing the aviation activity at Ben - Gurion International Airport in 2021.

During the year, a total of 6,719,876 passengers on 75,324 international and domestic flights passed through Ben- Gurion Airport.

International passenger traffic in 2021 totaled 6,088,107 passengers, representing an increase of 36.58% compared to 2020.

International aircraft traffic totaled 66,938 flights, representing an increase of 35.98% compared to 2020.

International passenger traffic at Terminal 3 this year totaled 6,000,277 passengers.

Departing passengers on Terminal 1 International flights this year totaled 87,830 flights.

On domestic flights 631,769 passengers passed through Ben- Gurion Airport this year, compared with 352,354 in 2020, an increase of 79.29%.

During the year cargo weighing a total 79.29 tons as handled, representing 375,675 of an increase compared with 17.18% in 2020.

Israeli airlines carried 1,990,121 passengers in 2021, 32.68% of all travelers passing through Ben - Gurion Airport, an increase of 70.5% relative to the previous year.

The airlines which contributed the most to the increase of passenger traffic this year are: EL AL ISRAEL AIRLINES, RYANAIR and ISRAIR AIRLINES.

The Destination with the highest volume of activity was NEW YORK - J.F.KENNEDY, with a total of 400,660 passengers to and from, an increase of 165.39% compared to the previous year.

The country with the highest volume of activity was UNITED STATES, with 985,722 passengers, constituting 16.19% of all activity.

Of the leading countries, the highest growth relative to last year was recorded in passenger traffic to UNITED STATES, GREECE and TURKEY.

Below you will find additional tables providing details about movements of aircraft, passengers and cargo at Ben - Gurion International Airport.

Sincerely yours,

**Shmuel Zakay**

Managing Director,

Ben-Gurion International Airport



# Content



## Aviation Activity

Aviation Activity Summary	1
International Activity Summary	2 - 4
Domestic Activity Summary	5



## International Activity

Distribution By Months	7 - 8
Distribution By Airlines	9 - 12
Distribution By Countries	13 - 15
Distribution By First Destination	16 - 20



## Cargo Activity

Distribution by Transporter	22
Distribution By Months	22
Distribution By Airlines	23 - 25
Distribution By Countries	26



## Domestic Activity

Distribution By Months	28 - 29
Distribution By Airlines	30





# Passengers and Aircrafts

## Aviation Activity at Ben Gurion International Airport

### International Activity

	Accumulated Since the beginning of the year		
	2021	2020	Rate Of Change
Incoming Aircrafts	33,465	24,625	35.89%
Outgoing Aircrafts	33,473	24,598	36.08%
<b>Total Aircrafts</b>	<b>66,938</b>	<b>49,223</b>	<b>35.98%</b>
Incoming Passengers	3,032,982	2,235,773	35.65%
Outgoing Passengers	3,055,125	2,221,666	37.51%
Transit Passengers	157	2,005	<b>-92.16%</b>
<b>Total Passengers</b>	<b>6,088,107</b>	<b>4,457,439</b>	<b>36.58%</b>

### Domestic Activity

	Accumulated Since the beginning of the year		
	2021	2020	Rate Of Change
Aircrafts	8,386	5,702	47.07%
Passengers	631,769	352,354	79.29%

### International and Domestic Activity Summary

	Accumulated Since the beginning of the year		
	2021	2020	Rate Of Change
Aircrafts	75,324	54,925	37.13%
Passengers	6,719,876	4,809,793	39.71%





# Passengers and Aircrafts

## Int'l Aviation Activity at Ben Gurion International Airport by Terminal

### Terminal 3

	Accumulated Since the beginning of the year		
	2021	2020	Rate of Change
Incoming Aircrafts	32,696	24,625	32.77%
Outgoing Aircrafts	33,246	21,779	52.65%
<b>Total Aircrafts</b>	<b>65,942</b>	<b>46,404</b>	<b>42.10%</b>
Incoming Passengers	2,967,187	2,235,773	32.71%
Outgoing Passengers	3,033,090	1,849,917	63.95%
Transit Passengers	157	2,005	-92.16%
<b>Total Passengers</b>	<b>6,000,277</b>	<b>4,085,690</b>	<b>46.86%</b>

### Terminal 1

	Accumulated Since the beginning of the year		
	2021	2020	Rate of Change
Incoming Aircrafts	769		
Outgoing Aircrafts	227	2,819	-91.94%
<b>Total Aircrafts</b>	<b>996</b>	<b>2,819</b>	<b>-64.66%</b>
Incoming Passengers	65,795		
Outgoing Passengers	22,035	371,749	-94.07%
<b>Total Passengers</b>	<b>87,830</b>	<b>371,749</b>	<b>-76.37%</b>





# Passengers and Aircrafts

## Int'l Aviation Activity at Ben Gurion International Airport by Flight Type

### Schedule and Charter Flights

	Accumulated Since the beginning of the year		
	2021	2020	Rate of Change
Incoming Aircrafts	24,469	17,389	40.71%
Outgoing Aircrafts	24,610	17,578	40.00%
<b>Total Aircrafts</b>	<b>49,079</b>	<b>34,967</b>	<b>40.35%</b>
Incoming Passengers	3,019,058	2,225,109	35.68%
Outgoing Passengers	3,041,753	2,211,046	37.57%
Transit Passengers	154	1,996	<b>-92.28%</b>
<b>Total Passengers</b>	<b>6,060,811</b>	<b>4,436,155</b>	<b>36.62%</b>

### Private Flights

	Accumulated Since the beginning of the year		
	2021	2020	Rate of Change
Incoming Aircrafts	3,949	2,709	45.77%
Outgoing Aircrafts	3,917	2,689	45.66%
<b>Total Aircrafts</b>	<b>7,866</b>	<b>5,398</b>	<b>45.72%</b>
Incoming Passengers	11,673	8,117	43.80%
Outgoing Passengers	11,392	8,386	35.84%
<b>Total Passengers</b>	<b>23,065</b>	<b>16,503</b>	<b>39.76%</b>







# Passengers and Aircrafts

## Int'l Aviation Activity at Ben Gurion International Airport by Flight Type

### Cargo Flights

	Accumulated Since the beginning of the year		
	2021	2020	Rate of Change
Incoming Aircrafts	4,773	4,313	10.66%
Outgoing Aircrafts	4,668	4,109	13.60%
<b>Total Aircrafts</b>	<b>9,441</b>	<b>8,422</b>	<b>12.09%</b>
Incoming Passengers	222	273	-18.68%
Outgoing Passengers	312	402	-22.38%
<b>Total Passengers</b>	<b>534</b>	<b>675</b>	<b>-20.88%</b>

### Other Flights

	Accumulated Since the beginning of the year		
	2021	2020	Rate of Change
Incoming Aircrafts	274	214	28.03%
Outgoing Aircrafts	278	222	25.22%
<b>Total Aircrafts</b>	<b>552</b>	<b>436</b>	<b>26.60%</b>
Incoming Passengers	2,029	2,274	-10.77%
Outgoing Passengers	1,668	1,832	-8.95%
<b>Total Passengers</b>	<b>3,697</b>	<b>4,106</b>	<b>-9.96%</b>





# Passengers and Aircrafts

## Domestic Aviation Activity at Ben Gurion International Airport by Flight Type

### Schedule Flights

	Accumulated Since the beginning of the year		
	2021	2020	Rate of Change
Aircrafts	7,183	4,284	67.67%
Passengers	630,020	351,587	79.19%

### Private Flights

	Accumulated Since the beginning of the year		
	2021	2020	Rate of Change
Aircrafts	621	659	-5.76%
Passengers	575	515	11.65%

### Other Flights

	Accumulated Since the beginning of the year		
	2021	2020	Rate of Change
Aircrafts	582	759	-23.32%
Passengers	1,174	252	





# International Activity

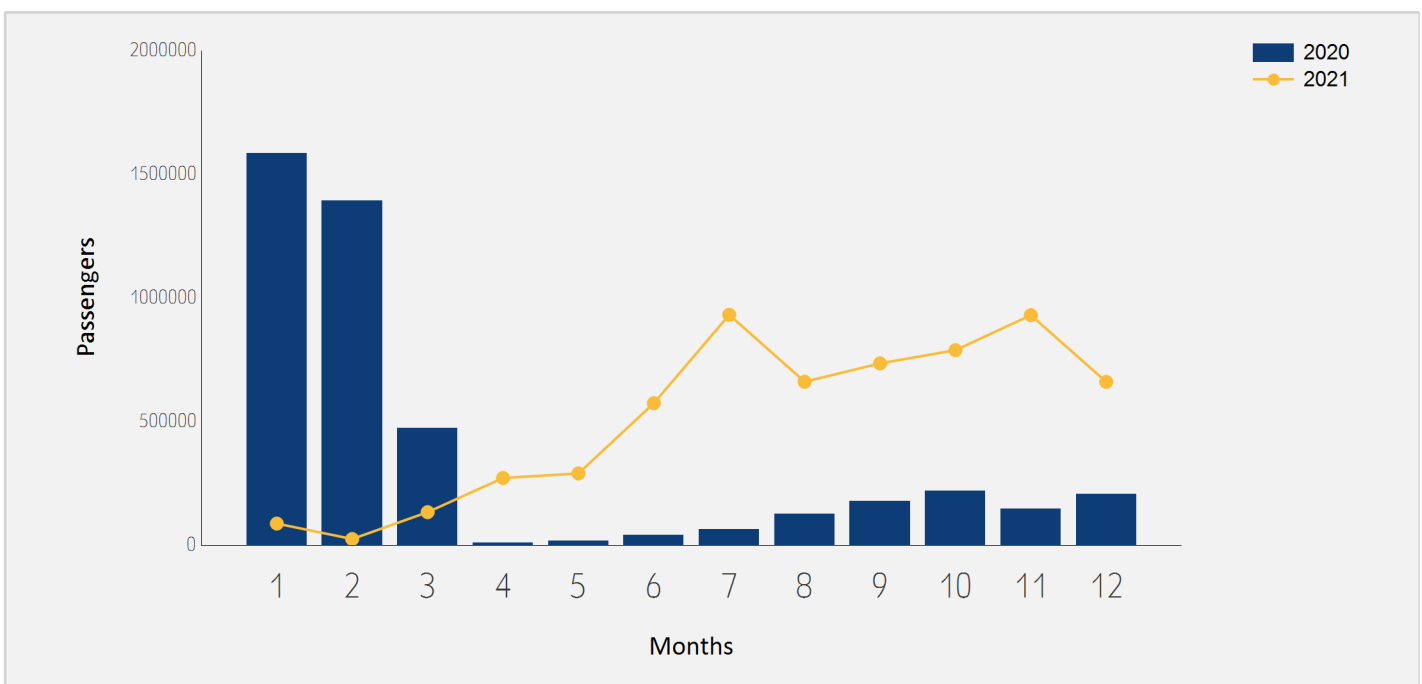




# International Passenger Traffic

## Distribution by Months

Months	2021	2020	Rate of Change
January	87,196	1,584,027	-94.49%
February	24,755	1,391,803	-98.22%
March	133,322	471,904	-71.74%
April	271,707	9,377	
May	290,037	18,225	
June	574,093	40,970	
July	931,834	64,001	
August	660,867	126,353	
September	735,213	176,877	
October	788,593	220,125	
November	930,165	147,166	
December	660,325	206,611	
<b>Total</b>	<b>6,088,107</b>	<b>4,457,439</b>	<b>36.58%</b>

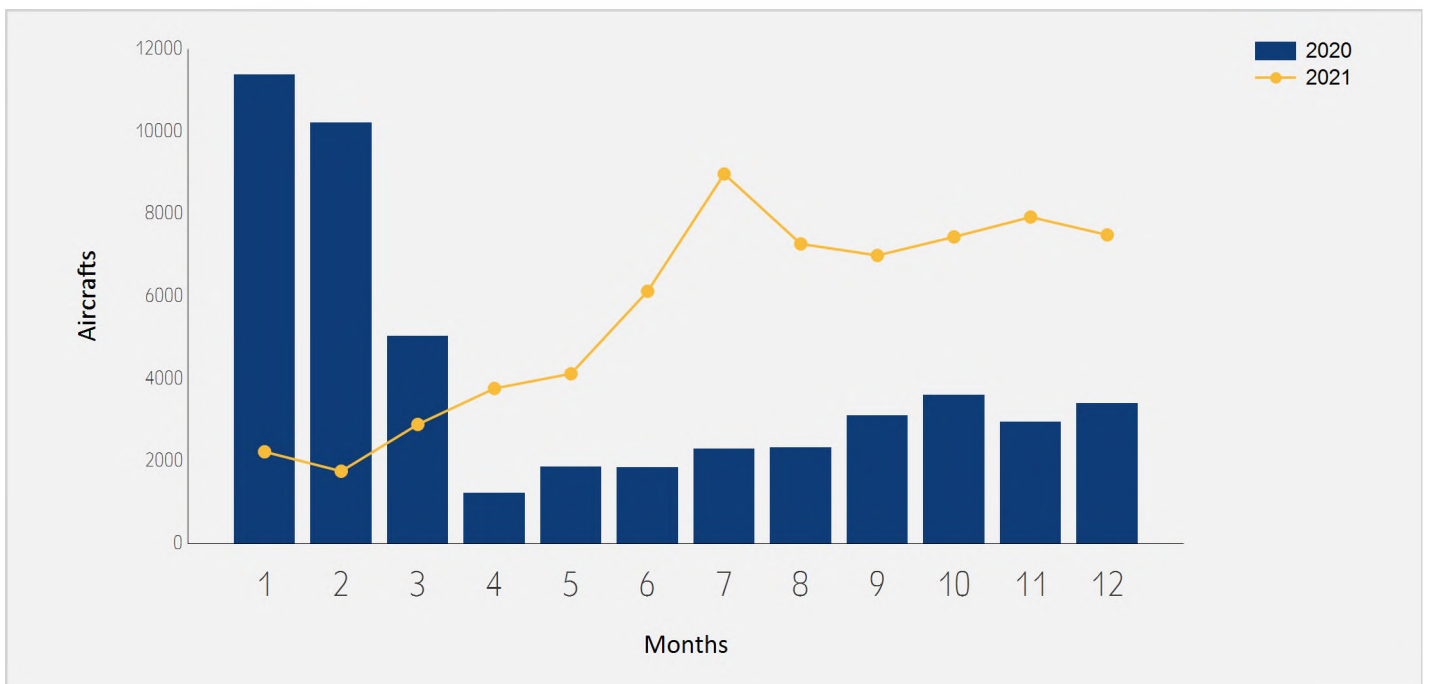




# International Aircraft Traffic

## Distribution by Months

Months	2021	2020	Rate of Change
January	2,225	11,374	-80.43%
February	1,753	10,207	-82.82%
March	2,888	5,038	-42.67%
April	3,761	1,225	
May	4,119	1,863	121.09%
June	6,120	1,849	
July	8,967	2,291	
August	7,269	2,328	
September	6,989	3,104	125.16%
October	7,439	3,595	106.92%
November	7,920	2,948	168.65%
December	7,488	3,401	120.17%
<b>Total</b>	<b>66,938</b>	<b>49,223</b>	<b>35.98%</b>







# Int'l Accumulated Passenger Traffic

## Distribution by Airline

		Accumulated 2021		Accumulated 2020		
Airline		Passengers	Rate of Total	Passengers	Rate of Total	Rate of Change
LY	EL AL ISRAEL AIRLINES	1,401,014	23.01%	906,619	20.33%	54.53%
FR	RYANAIR	512,396	8.41%	233,878	5.24%	119.08%
6H	ISRAIR AIRLINES	363,653	5.97%	190,898	4.28%	90.49%
TK	TURKISH AIRLINES	358,636	5.89%	311,094	6.97%	15.28%
UA	UNITED AIRLINES	345,422	5.67%	266,553	5.97%	29.58%
W6	WIZZAIR	267,310	4.39%	244,445	5.48%	9.35%
PC	PEGASUS AIRLINES	222,636	3.65%	164,045	3.68%	35.71%
IZ	ARKIA ISRAELI AIRLINES	219,745	3.60%	66,186	1.48%	
EZY	EASYJET	211,763	3.47%	258,920	5.80%	-18.21%
LH	LUFTHANSA	182,381	2.99%	139,604	3.13%	30.64%
PS	UKRAINE INTL AIR	172,979	2.84%	115,420	2.58%	49.86%
DL	DELTA AIRLINES	151,537	2.48%	77,362	1.73%	95.88%
FZ	FLYDUBAI	116,271	1.90%	21,600	0.48%	
A3	AEGEAN AIRLINES	109,841	1.80%	81,838	1.83%	34.21%
AA	AMERICAN AIRLINES	106,257	1.74%			
BZ	BLUE BIRD AIRWAYS	95,356	1.56%	28,884	0.64%	
AF	AIR FRANCE	83,575	1.37%	88,117	1.97%	-5.15%
LX	SWISS INT'L AIRLINES	81,041	1.33%	57,870	1.29%	40.03%
OS	AUSTRIAN AIRLINES	73,359	1.20%	51,122	1.14%	43.49%
BA	BRITISH AIRWAYS PLC	64,273	1.05%	76,441	1.71%	-15.91%
TO	TRANSAVIA FRANCE	62,926	1.03%	71,995	1.61%	-12.59%





# Int'l Accumulated Passenger Traffic

## Distribution by Airline

		Accumulated 2021		Accumulated 2020		
Airline		Passengers	Rate of Total	Passengers	Rate of Total	Rate of Change
KL	K.L.M.	58,915	0.96%	26,703	0.59%	120.63%
SU	AEROFLOT RUSSIAN AIRLINES	58,878	0.96%	125,098	2.80%	-52.93%
QS	SMARTWINGS	54,222	0.89%	18,197	0.40%	197.97%
AC	AIR CANADA	53,759	0.88%	41,539	0.93%	29.41%
VS	VIRGIN ATLANTIC AIRWAYS	49,073	0.80%	31,118	0.69%	57.69%
ET	ETHIOPIAN AIRLINES	45,404	0.74%	42,130	0.94%	7.77%
LO	LOT POLISH AIRLINES	40,299	0.66%	46,302	1.03%	-12.96%
IB	IBERIA	38,513	0.63%	30,252	0.67%	27.30%
B2	BELAVIA AIRLINE	27,412	0.45%	26,035	0.58%	5.28%
9U	AIR MOLDOVA	26,686	0.43%	16,256	0.36%	64.16%
UX	AIR EUROPA Lineas Aereas	25,038	0.41%	454	0.01%	
TWI	TAILWIND AIRLINES	23,452	0.38%	12,312	0.27%	90.48%
RO	TAROM - RUMANIAN AIR TRAN	23,202	0.38%	19,023	0.42%	21.96%
AZ	ITALYA TRASPORTO AEREO	21,829	0.35%	55,578	1.24%	-60.72%
U8	TUS AIRWAYS	21,593	0.35%			
SN	BRUSSELS AIRLINES	19,595	0.32%	22,958	0.51%	-14.64%
XC	CORONDON AIRLINES	19,506	0.32%	7,220	0.16%	170.16%
FH	FREEBIRD AIRLINES	17,310	0.28%	7,401	0.16%	133.88%
HV	TRANSAVIA	15,997	0.26%	32,925	0.73%	-51.41%
FB	BULGARIA AIR	15,686	0.25%	18,800	0.42%	-16.56%
BUC	EUROPEAN AIR CHARTER	12,540	0.20%	1,617	0.03%	





# Int'l Accumulated Passenger Traffic

## Distribution by Airline

		Accumulated 2021		Accumulated 2020		
Airline		Passengers	Rate of Total	Passengers	Rate of Total	Rate of Change
EY	ETIHAD AIRWAYS	12,165	0.19%	472	0.01%	
HM	AIR SEYCHELLES	11,688	0.19%	9,889	0.22%	18.19%
AI	AIR INDIA	10,076	0.16%	22,513	0.50%	-55.24%
5F	FLYONE	9,837	0.16%	112		
TP	AIR PORTUGAL	9,532	0.15%	12,544	0.28%	-24.01%
J2	AZERBAIJAN AIRLINES	9,152	0.15%	3,605	0.08%	153.86%
HY	UZBEKISTAN AIR	8,749	0.14%	6,593	0.14%	32.70%
MJ	MYWAY AIRLINES	7,697	0.12%	7,166	0.16%	7.40%
BT	AIR BALTIC	7,314	0.12%	1,681	0.03%	
EAF	ELECTRA AIRWAYS	7,295	0.11%	767	0.01%	
	OTHERS	123,322	2.02%	357,288	8.01%	-65.48%
	<b>TOTAL</b>	<b>6,088,107</b>		<b>4,457,439</b>		<b>36.58%</b>





# Int'l Accumulated Passenger Traffic

## Distribution by Israeli Airlines

		Accumulated 2021		Accumulated 2020		
Airlines		Passengers	Rate of Total	Passengers	Rate of Total	Rate of Change
LY	EL AL ISRAEL AIRLINES	1,401,014	23.01%	906,619	20.33%	54.53%
6H	ISRAIR AIRLINES	363,653	5.97%	190,898	4.28%	90.49%
IZ	ARKIA ISRAELI AIRLINES	219,745	3.60%	66,186	1.48%	
	OTHERS	5,709	0.09%	3,500	0.07%	63.11%
	<b>TOTAL</b>	<b>1,990,121</b>		<b>1,167,203</b>		<b>70.50%</b>





# Int'l Accumulated Passenger Traffic

## Distribution by Countries

Countries	Accumulated 2021		Accumulated 2020		
	Passengers	Rate of Total	Passengers	Rate of Total	Rate of Change
UNITED STATES	985,722	16.19%	530,005	11.89%	85.98%
TURKEY	643,062	10.56%	514,366	11.53%	25.02%
GREECE	514,194	8.44%	192,961	4.32%	166.47%
FRANCE	388,289	6.37%	308,458	6.92%	25.88%
GERMANY	321,315	5.27%	289,825	6.50%	10.86%
UKRAINE	281,595	4.62%	162,853	3.65%	72.91%
UNITED KINGDOM	272,755	4.48%	284,426	6.38%	-4.10%
UNITED ARAB EMIRATES	268,511	4.41%	72,025	1.61%	
ITALY	250,912	4.12%	183,310	4.11%	36.87%
GEORGIA	222,828	3.66%	61,522	1.38%	
AUSTRIA	194,282	3.19%	119,445	2.67%	62.65%
CYPRUS	193,910	3.18%	79,488	1.78%	143.94%
HUNGARY	166,529	2.73%	99,843	2.23%	66.79%
SWITZERLAND	131,240	2.15%	120,154	2.69%	9.22%
CZECH REPUBLIC	127,164	2.08%	47,250	1.06%	169.13%
NETHERLANDS	126,404	2.07%	108,172	2.42%	16.85%
ROMANIA	126,088	2.07%	120,238	2.69%	4.86%
SPAIN	113,760	1.86%	153,138	3.43%	-25.71%
RUSSIAN FEDERATION	107,147	1.75%	206,870	4.64%	-48.20%
BULGARIA	102,882	1.68%	112,256	2.51%	-8.35%
POLAND	92,723	1.52%	130,408	2.92%	-28.89%
CANADA	60,467	0.99%	55,020	1.23%	9.90%







# Int'l Accumulated Passenger Traffic

## Distribution by Countries

Countries	Accumulated 2021		Accumulated 2020		
	Passengers	Rate of Total	Passengers	Rate of Total	Rate of Change
ETHIOPIA	45,686	0.75%	42,561	0.95%	7.34%
BELGIUM	44,800	0.73%	47,108	1.05%	-4.89%
MOLDOVA	37,885	0.62%	17,955	0.40%	110.99%
THAILAND	30,931	0.50%	44,345	0.99%	-30.24%
BELARUS	27,687	0.45%	26,225	0.58%	5.57%
MONTENEGRO	25,921	0.42%	99		
PORTUGAL	22,721	0.37%	19,659	0.44%	15.57%
SEYCHELLES	19,951	0.32%	23,686	0.53%	-15.76%
MOROCCO	15,018	0.24%	124		
LITHUANIA	13,333	0.21%	15,051	0.33%	-11.41%
AZERBAIJAN	12,418	0.20%	9,050	0.20%	37.21%
INDIA	11,482	0.18%	42,494	0.95%	-72.97%
CHINA	11,375	0.18%	43,942	0.98%	-74.11%
SERBIA	10,291	0.16%	27,785	0.62%	-62.96%
UZBEKISTAN	9,281	0.15%	7,177	0.16%	29.31%
LATVIA	7,334	0.12%	1,828	0.04%	
JORDAN	5,505	0.09%	31,409	0.70%	-82.47%
TANZANIA	5,060	0.08%	3,606	0.08%	40.32%
DENMARK	4,762	0.07%	7,314	0.16%	-34.89%
BAHRAIN	4,446	0.07%	346		
FINLAND	4,300	0.07%	11,346	0.25%	-62.10%
MALTA	3,936	0.06%	4,787	0.10%	-17.77%





# Int'l Accumulated Passenger Traffic

## Distribution by Countries

Countries	Accumulated 2021		Accumulated 2020		Rate of Change
	Passengers	Rate of Total	Passengers	Rate of Total	
EGYPT	3,784	0.06%	10,843	0.24%	-65.10%
ICELAND	3,325	0.05%	33		
SLOVAKIA	3,101	0.05%	774	0.01%	
ALBANIA	2,985	0.04%	184		
SLOVENIA	2,334	0.03%	43		
OTHERS	6,676	0.10%	65,632	1.47%	-89.82%
<b>TOTAL</b>	<b>6,088,107</b>		<b>4,457,439</b>		<b>36.58%</b>





# Int'l Accumulated Passenger Traffic

## Distribution by First Destination

Destination	Accumulated 2021		Accumulated 2020		
	Passengers	Rate of Total	Passengers	Rate of Total	Rate of Change
NEW YORK - J.F.KENNEDY	400,660	6.58%	150,968	3.38%	165.39%
NEW YORK - NEWARK	333,009	5.46%	241,641	5.42%	37.81%
PARIS-CHARLES DE GAULLE	280,651	4.60%	186,110	4.17%	50.79%
ISTANBUL	270,291	4.43%	263,787	5.91%	2.46%
ISTANBUL-SABIHA GOKCHEN	260,165	4.27%	195,413	4.38%	33.13%
DUBAI	252,326	4.14%	69,625	1.56%	
KIEV KYIV-BORISPOL	238,739	3.92%	123,725	2.77%	92.95%
LONDON - HEATHROW	211,454	3.47%	160,191	3.59%	32.00%
ATHENS	205,164	3.36%	137,807	3.09%	48.87%
VIENNA	192,822	3.16%	116,527	2.61%	65.47%
FRANKFURT	165,189	2.71%	120,254	2.69%	37.36%
BUDAPEST	164,714	2.70%	93,639	2.10%	75.90%
BATUMI	127,957	2.10%	17,352	0.38%	
PRAGUE-RUZYNE	126,854	2.08%	47,158	1.05%	168.99%
AMSTERDAM	126,268	2.07%	100,863	2.26%	25.18%
BUCHAREST - OTOPENI	113,756	1.86%	100,172	2.24%	13.56%
ROME - FIUMICINO	112,804	1.85%	105,081	2.35%	7.34%
ANTALYA	101,669	1.66%	53,201	1.19%	91.10%
LARNACA	99,447	1.63%	43,251	0.97%	129.92%
ZURICH	97,633	1.60%	77,605	1.74%	25.80%
TBILISI	94,867	1.55%	44,170	0.99%	114.77%
PAPHOS	94,463	1.55%	36,207	0.81%	160.89%





# Int'l Accumulated Passenger Traffic

## Distribution by First Destination

Destination	Accumulated 2021		Accumulated 2020		Rate of Change
	Passengers	Rate of Total	Passengers	Rate of Total	
MIAMI INTERNATIONAL	87,290	1.43%	21,493	0.48%	
RHODES-PARADISI	86,555	1.42%	16,872	0.37%	
HERAKLION	85,732	1.40%	13,451	0.30%	
BERLIN BRANDENBURG INTL	84,940	1.39%	1,250	0.02%	
MADRID	72,342	1.18%	99,492	2.23%	-27.28%
SAN FRANCISCO	69,680	1.14%	57,602	1.29%	20.96%
PARIS-ORLY	60,009	0.98%	65,003	1.45%	-7.68%
LOS ANGELES	59,999	0.98%	17,489	0.39%	
MILAN-MALPENSA	59,970	0.98%	39,754	0.89%	50.85%
SOFIA	59,965	0.98%	83,929	1.88%	-28.55%
WARSAW	59,294	0.97%	65,482	1.46%	-9.44%
MOSCOW	58,892	0.96%	124,944	2.80%	-52.86%
TORONTO	53,544	0.87%	54,899	1.23%	-2.46%
MUNICH	47,061	0.77%	55,610	1.24%	-15.37%
LUTON	46,726	0.76%	94,099	2.11%	-50.34%
ADDIS ABABA	45,686	0.75%	42,561	0.95%	7.34%
MOSCOW-DOMODEDOVO	41,147	0.67%	18,209	0.40%	125.97%
THESSALONIKI	41,041	0.67%	22,393	0.50%	83.27%
BARCELONA	40,767	0.66%	50,694	1.13%	-19.58%
CHISINAU	37,885	0.62%	17,955	0.40%	110.99%
BRUSSELS	37,197	0.61%	33,290	0.74%	11.73%
BERGAMO	36,937	0.60%	13,641	0.30%	170.77%





# Int'l Accumulated Passenger Traffic

## Distribution by First Destination

Destination	Accumulated 2021		Accumulated 2020		
	Passengers	Rate of Total	Passengers	Rate of Total	Rate of Change
CHICAGO - O'HARE	32,827	0.53%	6,123	0.13%	
MINSK	27,687	0.45%	26,139	0.58%	5.92%
CORFU	26,291	0.43%	1,181	0.02%	
KRAKOW	25,880	0.42%	29,790	0.66%	-13.12%
TIVAT	25,649	0.42%	66		
ODESA	23,830	0.39%	17,914	0.40%	33.02%
VARNA	23,044	0.37%	20,062	0.45%	14.86%
LISBON	22,562	0.37%	19,602	0.43%	15.10%
GENEVA	20,946	0.34%	31,191	0.69%	-32.84%
MIKONOS	20,542	0.33%	514	0.01%	
MAHE SEYCHELLES INTL	19,951	0.32%	23,686	0.53%	-15.76%
BURGAS	19,769	0.32%	6,244	0.14%	
KHANIA-SOUDABAY	18,753	0.30%	18		
PHUKET	16,063	0.26%			
NICE	15,576	0.25%	7,010	0.15%	122.19%
SANTORINI	14,891	0.24%	49		
BANGKOK INTL.-SUARNABHUM	14,868	0.24%	44,026	0.98%	-66.22%
LYON - SATOLAS	14,690	0.24%	14,609	0.32%	0.55%
ABU DHABI	14,418	0.23%	397		
BADEN BADEN	14,338	0.23%	6,967	0.15%	105.79%
VILNIUS INTL	13,253	0.21%	14,412	0.32%	-8.04%
MARSEILLE	13,192	0.21%	15,410	0.34%	-14.39%







# Int'l Accumulated Passenger Traffic

## Distribution by First Destination

Destination	Accumulated 2021		Accumulated 2020		
	Passengers	Rate of Total	Passengers	Rate of Total	Rate of Change
TREVISO	12,878	0.21%			
NAPLES-CAPODICHINO	12,612	0.20%	5,359	0.12%	135.34%
BASEL	12,401	0.20%	11,266	0.25%	10.07%
BAKU HEYDAR ALIYEV INT'L	12,350	0.20%	9,046	0.20%	36.52%
MANCHESTER	12,070	0.19%	13,260	0.29%	-8.97%
MARRAKESH	11,721	0.19%			
DELHI	10,433	0.17%	23,018	0.51%	-54.67%
BELGRADE	10,291	0.16%	27,785	0.62%	-62.96%
DALAMAN	9,594	0.15%	1,547	0.03%	
ZAKYNTHOS	9,521	0.15%	4		
KHARKOV	9,386	0.15%	5,882	0.13%	59.57%
TASHKENT	9,281	0.15%	7,164	0.16%	29.55%
MEMMINGEN	8,936	0.14%	6,723	0.15%	32.91%
CLUJ NAPOCA	7,945	0.13%	5,612	0.12%	41.57%
RIGA	7,334	0.12%	1,828	0.04%	
BRUSSELS - CHARLEROI	7,150	0.11%	13,402	0.30%	-46.64%
LVOV	6,991	0.11%	5,007	0.11%	39.62%
MONTREAL - DORVAL	6,871	0.11%	5		
ST. PETERSBURG	6,236	0.10%	19,085	0.42%	-67.32%
SHANGHAI PUDONG	5,843	0.09%	1,141	0.02%	
HONG KONG INT'L	5,087	0.08%	29,352	0.65%	-82.66%
AMMAN (QUEEN ALIA INT'L)	4,964	0.08%	30,972	0.69%	-83.97%





# Int'l Accumulated Passenger Traffic

## Distribution by First Destination

Destination	Accumulated 2021		Accumulated 2020		Rate of Change
	Passengers	Rate of Total	Passengers	Rate of Total	
COPENHAGEN KASTRUP	4,531	0.07%	7,308	0.16%	-37.99%
BAHRAIN	4,446	0.07%	346		
HELSINKI	4,297	0.07%	4,180	0.09%	2.79%
IASI	4,258	0.06%	6,477	0.14%	-34.25%
BARI -PALESE MACCHIE	4,207	0.06%	22		
ZANZIBAR	3,971	0.06%	3,321	0.07%	19.57%
MALTA	3,936	0.06%	4,787	0.10%	-17.77%
PREVEZA	3,867	0.06%	106		
BOLOGNA-BORGO PANIGALE	3,658	0.06%	5,332	0.11%	-31.39%
POZNAN	3,386	0.05%	6,109	0.13%	-44.57%
REYKJAVIK	3,316	0.05%	33		
CASABLANCA-MOHAMMED V	3,115	0.05%	2		
WARSAW- MODLIN	3,052	0.05%	12,084	0.27%	-74.74%
CAIRO INTERNATIONAL	3,001	0.04%	8,291	0.18%	-63.80%
TIRANA	2,985	0.04%	184		
BRATISLAVA	2,904	0.04%	284		
CATANIA FONTANAROSSA	2,674	0.04%	32		
LJUBLJANA	2,334	0.03%	43		
GRENOBLE-SAUNT GEOIRS	2,286	0.03%	7,060	0.15%	-67.62%
VILLAFRANCA-VERONA	2,145	0.03%	275		
TURIN	2,016	0.03%	5		
OTHERS	35,246	0.57%	393,431	8.82%	-91.04%





# Int'l Accumulated Passenger Traffic

## Distribution by First Destination

Destination	Accumulated 2021		Accumulated 2020		
	Passengers	Rate of Total	Passengers	Rate of Total	Rate of Change
TOTAL	6,088,107		4,457,439		36.58%



# Cargo Activity







# Cargo Handling

## Distribution by Transporter

Transporter	2021 (Ton)	2020 (Ton)	Rate of Change
Cargo on Passenger Aircrafts - Incoming	52,669	39,623	32.92%
Cargo on Passenger Aircrafts - Outgoing	49,404	34,523	43.10%
<b>Total Cargo on Passenger Aircrafts</b>	<b>102,072</b>	<b>74,148</b>	<b>37.65%</b>
Cargo on Cargo Aircrafts - Incoming	179,879	157,039	14.54%
Cargo on Cargo Aircrafts - Outgoing	93,723	89,403	4.83%
<b>Total Cargo on Cargo Aircrafts</b>	<b>273,603</b>	<b>246,443</b>	<b>11.02%</b>
<b>Total</b>	<b>375,675</b>	<b>320,591</b>	<b>17.18%</b>

## Distribution by Months

Month	2021 (Ton)			2020 (Ton)			Rate of Change
	Cargo	Mail	Total	Cargo	Mail	Total	
January	28,571	632	29,203	28,568	1,395	29,964	-2.53%
February	26,508	322	26,830	28,188	1,033	29,221	-8.18%
March	31,396	546	31,942	26,511	535	27,047	18.09%
April	28,779	745	29,524	20,673	116	20,790	42.01%
May	29,512	544	30,056	26,974	112	27,086	10.96%
June	30,775	586	31,361	24,918	216	25,134	24.77%
July	30,404	682	31,086	23,733	331	24,065	29.17%
August	33,558	582	34,139	24,252	465	24,718	38.11%
September	28,160	602	28,763	23,039	526	23,566	22.05%
October	33,037	704	33,741	26,262	652	26,914	25.36%
November	33,828	723	34,550	29,383	665	30,048	14.98%
December	33,833	649	34,480	31,185	854	32,038	7.62%
<b>Total</b>	<b>368,361</b>	<b>7,317</b>	<b>375,675</b>	<b>313,686</b>	<b>6,900</b>	<b>320,591</b>	<b>17.18%</b>







# Accumulated Cargo Handling on Passengers Aircrafts

## Distribution by Airline

		Accumulated 2021				Accumulated 2020				
Airline		Incoming Cargo (Ton)	Outgoing Cargo (Ton)	Cargo (Ton)	Rate of Total	Incoming Cargo (Ton)	Outgoing Cargo (Ton)	Cargo (Ton)	Rate of Total	Rate of Change
LY	EL AL ISRAEL AIRLINES	11,849	15,171	27,019	26.47%	8,810	8,464	17,273	23.29%	56.42%
UA	UNITED AIRLINES	7,088	11,277	18,364	17.99%	8,316	10,690	19,007	25.63%	-3.38%
TK	TURKISH AIRLINES	7,184	1,111	8,295	8.12%	4,338	1,297	5,635	7.59%	47.20%
DL	DELTA AIRLINES	3,277	3,510	6,786	6.64%	1,960	2,389	4,348	5.86%	56.07%
AA	AMERICAN AIRLINES	2,096	3,321	5,417	5.30%					
LX	SWISS INT'L AIRLINES	3,210	1,858	5,069	4.96%	2,770	1,813	4,583	6.18%	10.60%
AF	AIR FRANCE	2,958	1,738	4,696	4.60%	79	168	247	0.33%	
VS	VIRGIN ATLANTIC AIRWAYS	2,366	1,317	3,683	3.60%	1,235	773	2,008	2.70%	83.41%
AC	AIR CANADA	1,460	2,038	3,498	3.42%	1,563	1,984	3,547	4.78%	-1.38%
ET	ETHIOPIAN AIRLINES	2,144	1,318	3,462	3.39%	1,092	799	1,890	2.54%	83.17%
BA	BRITISH AIRWAYS PLC	1,494	1,561	3,054	2.99%	2,068	1,142	3,209	4.32%	-4.83%
IB	IBERIA	1,335	657	1,992	1.95%	709	218	927	1.25%	114.88%
SU	AEROFLOT RUSSIAN AIRLINES	652	1,152	1,804	1.76%	1,893	1,775	3,668	4.94%	-50.81%
EY	ETIHAD AIRWAYS	868	867	1,734	1.69%	9	9	18	0.02%	
PC	PEGASUS AIRLINES	665	491	1,156	1.13%	324	313	637	0.85%	81.47%
CX	CATHAY PACIFIC AIRWAYS	798	345	1,144	1.12%	750	532	1,282	1.72%	-10.76%
FZ	FLYDUBAI	672	91	763	0.74%	38	7	45	0.06%	
AI	AIR INDIA	376	378	754	0.73%	509	286	795	1.07%	-5.15%
UX	AIR EUROPA Lineas Aereas	395	286	681	0.66%					
LH	LUFTHANSA	349	176	525	0.51%	299	212	510	0.68%	2.94%
PS	UKRAINE INTL AIR	364	90	454	0.44%	218	125	343	0.46%	32.36%
A3	AEGEAN AIRLINES	180	64	244	0.23%	69	82	151	0.20%	61.58%





# Accumulated Cargo Handling on Passengers Aircrafts

## Distribution by Airline

		Accumulated 2021				Accumulated 2020				
Airline		Incoming Cargo (Ton)	Outgoing Cargo (Ton)	Cargo (Ton)	Rate of Total	Incoming Cargo (Ton)	Outgoing Cargo (Ton)	Cargo (Ton)	Rate of Total	Rate of Change
LO	LOT POLISH AIRLINES	131	15	146	0.14%	65	22	87	0.11%	67.81%
OS	AUSTRIAN AIRLINES	93	52	145	0.14%	51	24	75	0.10%	93.33%
HM	AIR SEYCHELLES	112	1	113	0.11%	38	4	41	0.05%	175.60%
HY	UZBEKISTAN AIR	41	70	111	0.10%	71	68	139	0.18%	-20.14%
RO	TAROM - RUMANIAN AIR TRAN	77	32	109	0.10%	38	28	67	0.09%	62.68%
QS	SMARTWINGS	92	17	108	0.10%	65	34	98	0.13%	10.20%
	OTHERS	341	403	745	0.72%	2,249	1,266	3,515	4.74%	-78.80%
	<b>TOTAL</b>	<b>52,669</b>	<b>49,403</b>	<b>102,072</b>		<b>39,624</b>	<b>34,524</b>	<b>74,148</b>		<b>37.65%</b>





# Accumulated Cargo Handling on Cargo Aircrafts

## Distribution by Airline

		Accumulated 2021				Accumulated 2020				
Airline		Incoming Cargo Ton)	Outgoing Cargo Ton)	Cargo Ton)	Rate of Total	Incoming Cargo Ton)	Outgoing Cargo Ton)	Cargo Ton)	Rate of Total	Rate of Change
ICL	C.A.L ISRAELI CARGO	42,859	21,462	64,321	23.50%	21,489	12,186	33,675	13.66%	91.00%
LY	EL AL ISRAEL AIRLINES	29,224	17,340	46,564	17.01%	29,399	17,217	46,616	18.91%	-0.11%
TK	TURKISH AIRLINES	25,955	5,607	31,562	11.53%	19,447	6,035	25,481	10.33%	23.86%
QY	EUROPEAN AIR TRANSPORT	14,618	10,061	24,678	9.01%	12,327	8,771	21,098	8.56%	16.96%
MNB	MNG CARGO AIRLINES	14,512	2,598	17,110	6.25%	12,612	3,097	15,709	6.37%	8.91%
AZG	SILK WAY WEST AIRLINES	7,701	8,853	16,554	6.05%	8,753	8,470	17,222	6.98%	-3.87%
LH	LUFTHANSA	7,176	5,347	12,522	4.57%	7,355	5,555	12,910	5.23%	-3.00%
FX	FEDERAL EXPRESS	6,280	4,283	10,563	3.86%	5,430	3,958	9,388	3.80%	12.51%
CX	CATHAY PACIFIC AIRWAYS	4,612	3,101	7,713	2.81%	1,950	1,236	3,186	1.29%	142.09%
3V	ASL AIRLINES BELGIUM	3,269	2,024	5,293	1.93%	3,770	2,241	6,010	2.43%	-11.93%
HU	HAINAN AIRLINES	3,984	191	4,175	1.52%	2,580	43	2,622	1.06%	59.22%
EY	ETIHAD AIRWAYS	1,902	2,087	3,989	1.45%	8		8		
AJT	AMERIJET INTERNATIONAL	1,817	1,989	3,806	1.39%					
ET	ETHIOPIAN AIRLINES	1,771	896	2,667	0.97%	158	70	228	0.09%	
RSB	RUBY STAR	2,193	316	2,510	0.91%					
UA	UNITED AIRLINES	920	1,228	2,148	0.78%	456	606	1,062	0.43%	102.25%
3U	SICHUAN AIRLINES	1,469	591	2,060	0.75%	4,157	931	5,088	2.06%	-59.51%
IB	IBERIA	1,063	427	1,490	0.54%	160	71	231	0.09%	
BA	BRITISH AIRWAYS PLC	656	832	1,489	0.54%	2,357	1,993	4,350	1.76%	-65.77%
5X	UPS AIRLINES	857	599	1,456	0.53%					
SU	AEROFLOT RUSSIAN AIRLINES	711	554	1,265	0.46%	1,028	836	1,864	0.75%	-32.13%
ABD	ATLANTA ICELANDIC	826	380	1,205	0.44%	246	66	312	0.12%	





# Accumulated Cargo Handling on Cargo Aircrafts

## Distribution by Airline

		Accumulated 2021				Accumulated 2020				
Airline		Incoming Cargo Ton)	Outgoing Cargo Ton)	Cargo Ton)	Rate of Total	Incoming Cargo Ton)	Outgoing Cargo Ton)	Cargo Ton)	Rate of Total	Rate of Change
M4	POSTE AIR CARGO	797	300	1,097	0.40%	7		7		
VS	VIRGIN ATLANTIC AIRWAYS	508	469	977	0.35%	345	270	615	0.24%	58.86%
DL	DELTA AIRLINES	395	482	877	0.32%					
PC	PEGASUS AIRLINES	506	194	700	0.25%	265	121	387	0.15%	80.87%
VN	VIETNAM AIRLINES	685	7	692	0.25%					
F7	I FLY LTD	518	56	574	0.20%	1,299	38	1,337	0.54%	-57.06%
KE	KOREAN AIR	261	277	538	0.19%	127	192	319	0.12%	68.65%
LX	SWISS INT'L AIRLINES	188	202	390	0.14%	55	47	102	0.04%	
AC	AIR CANADA	120	229	349	0.12%	183	372	556	0.22%	-37.23%
PLM	WAMOS AIR	309		309	0.11%					
5Y	ATLAS AIR Inc.	246	61	307	0.11%					
	OTHERS	972	679	1,652	0.60%	21,075	14,984	36,059	14.63%	-95.41%
	<b>TOTAL</b>	<b>179,880</b>	<b>93,723</b>	<b>273,603</b>		<b>157,039</b>	<b>89,404</b>	<b>246,443</b>		<b>11.02%</b>





# Accumulated Cargo Handling on Cargo Aircrafts

## Distribution by Countries

Countries	Accumulated 2021				Accumulated 2020				
	Incoming Cargo (Ton)	Outgoing Cargo (Ton)	Cargo (Ton)	Rate of Total	Incoming Cargo (Ton)	Outgoing Cargo (Ton)	Cargo (Ton)	Rate of Total	Rate of Change
BELGIUM	43,831	38,876	82,707	30.22%	37,799	39,594	77,392	31.40%	6.86%
TURKEY	35,433	8,356	43,789	16.00%	27,197	10,278	37,475	15.20%	16.84%
GERMANY	30,213	11,886	42,100	15.38%	28,452	14,251	42,703	17.32%	-1.41%
CHINA	30,498	7,849	38,347	14.01%	20,547	3,446	23,994	9.73%	59.81%
AZERBAIJAN	7,702	8,802	16,504	6.03%	8,712	8,547	17,259	7.00%	-4.37%
NORWAY	11,231	51	11,282	4.12%	10,997		10,997	4.46%	2.59%
UNITED ARAB EMIRATES	2,996	2,452	5,448	1.99%	24		24		
CYPRUS	4,214	910	5,124	1.87%	7,741	657	8,398	3.40%	-38.98%
EGYPT		4,393	4,393	1.60%	8	713	721	0.29%	
FRANCE	1,291	2,707	3,999	1.46%	1,383	2,472	3,855	1.56%	3.73%
UNITED STATES	1,932	1,727	3,659	1.33%	2,928	2,692	5,621	2.28%	-34.90%
ETHIOPIA	1,771	896	2,667	0.97%	158	79	237	0.09%	
UNITED KINGDOM	1,308	1,356	2,663	0.97%	3,588	2,966	6,554	2.65%	-59.36%
SPAIN	1,794	434	2,228	0.81%	1,531	513	2,044	0.82%	9.00%
RUSSIAN FEDERATION	1,228	610	1,839	0.67%	2,368	1,097	3,465	1.40%	-46.92%
INDIA	974	460	1,434	0.52%	419	204	623	0.25%	130.17%
ITALY	1,006	413	1,419	0.51%	406	125	531	0.21%	167.23%
AUSTRIA	705		705	0.25%	465	646	1,111	0.45%	-36.54%
VIETNAM	681	6	687	0.25%					
SWITZERLAND	259	202	462	0.16%	699	64	763	0.30%	-39.44%
SOUTH KOREA	145	292	438	0.16%	118	235	353	0.14%	24.07%
CANADA	126	229	354	0.12%	184	390	575	0.23%	-38.43%







# Accumulated Cargo Handling on Cargo Aircrafts

## Distribution by Countries

Countries	Accumulated 2021				Accumulated 2020				
	Incoming Cargo (Ton)	Outgoing Cargo (Ton)	Cargo (Ton)	Rate of Total	Incoming Cargo (Ton)	Outgoing Cargo (Ton)	Cargo (Ton)	Rate of Total	Rate of Change
OTHERS	538	814	1,353	0.49%	1,314	435	1,749	0.70%	-22.64%
TOTAL	179,880	93,723	273,603		157,039	89,404	246,443		11.02%



# Domestic Activity

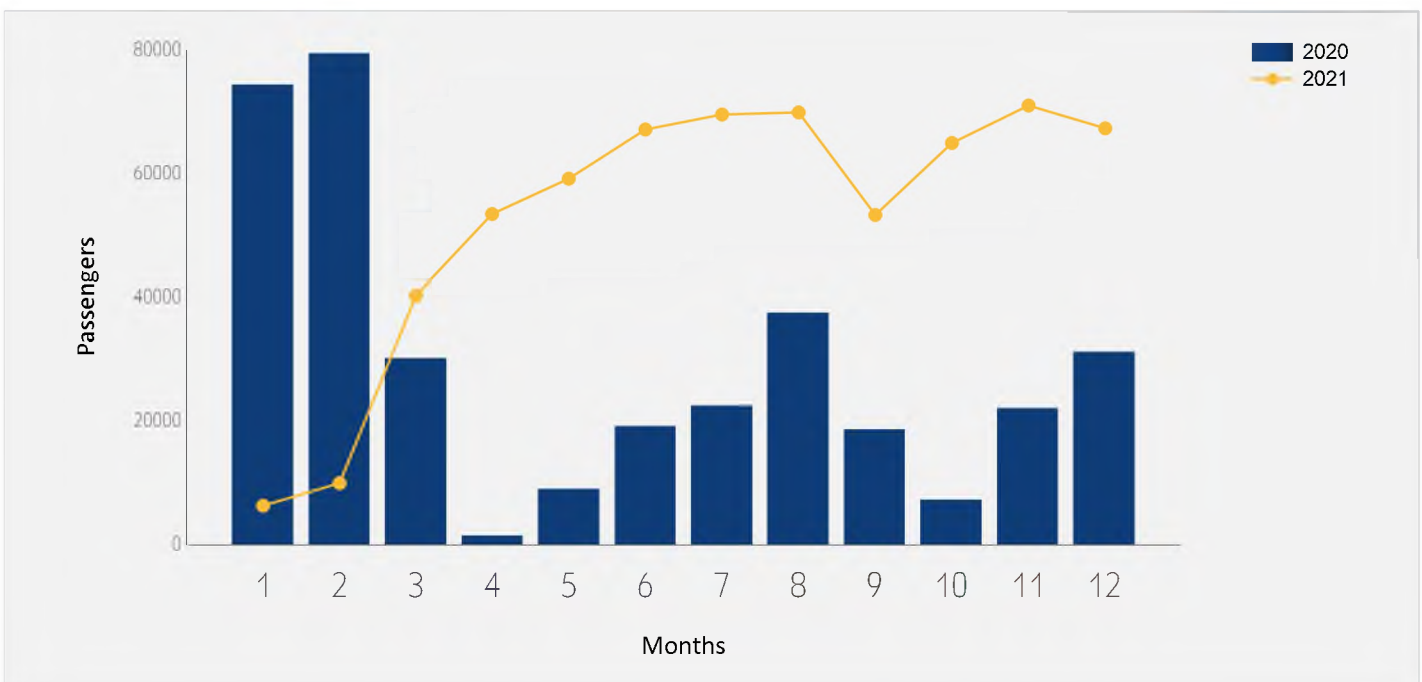




# Domestic Passenger Traffic

## Distribution by Months

Month	2021	2020	Rate of Change
January	6,294	74,380	-91.53%
February	9,936	79,475	-87.49%
March	40,263	30,137	33.59%
April	53,421	1,412	
May	59,126	8,989	
June	67,065	19,115	
July	69,490	22,417	
August	69,828	37,477	86.32%
September	53,261	18,645	185.65%
October	64,886	7,164	
November	70,938	22,021	
December	67,261	31,122	116.12%
<b>Total</b>	<b>631,769</b>	<b>352,354</b>	<b>79.29%</b>

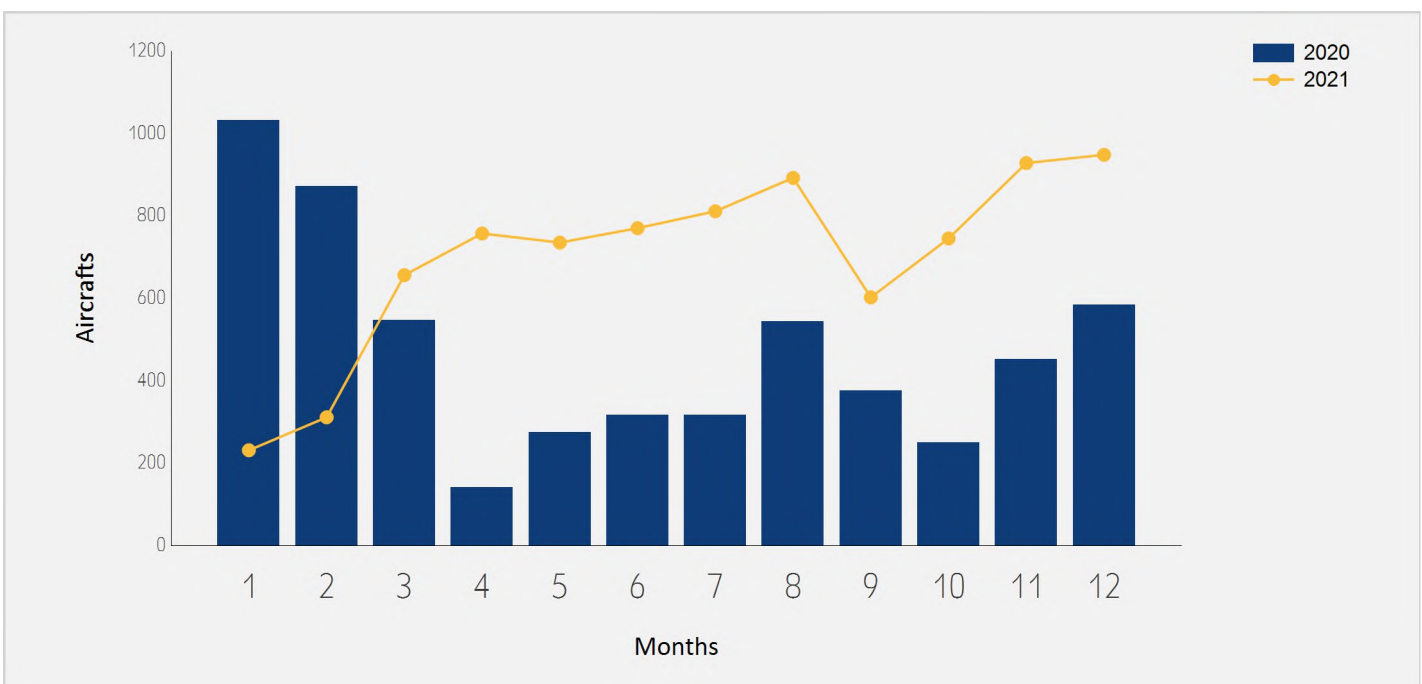




# Domestic Aircrafts Traffic

## Distribution by Months

Month	2021	2020	Rate of Change
January	231	1,032	-77.61%
February	311	871	-64.29%
March	656	547	19.92%
April	757	141	
May	735	274	168.24%
June	770	317	142.90%
July	811	316	156.64%
August	892	543	64.27%
September	602	376	60.10%
October	745	250	198.00%
November	928	451	105.76%
December	948	584	62.32%
<b>Total</b>	<b>8,386</b>	<b>5,702</b>	<b>47.07%</b>





# Accumulated Domestic Passengers Traffic

## Distribution by Airlines

		Accumulated 2021		Accumulated 2020		
Airline		Passengers	Rate of Total	Passengers	Rate of Total	Rate of Change
IZ	ARKIA ISRAELI AIRLINES	367,277	58.13%	163,724	46.46%	124.32%
6H	ISRAIR AIRLINES	263,248	41.66%	188,068	53.37%	39.97%
	OTHERS	1,244	0.19%	562	0.15%	121.35%
	<b>TOTAL</b>	<b>631,769</b>		<b>352,354</b>		<b>79.29%</b>

## Distribution by Destinations

		Accumulated 2021		Accumulated 2020		
Destination		Passengers	Rate of Total	Passengers	Rate of Total	Rate of Change
	RAMON	629,887	99.70%	350,854	99.57%	79.52%
	OTHERS	1,882	0.29%	1,500	0.42%	25.46%
	<b>TOTAL</b>	<b>631,769</b>		<b>352,354</b>		<b>79.29%</b>

