



# Annual Report

## Ben Gurion International Airport

Year 2019



# Israel Airport Authority

## Ben Gurion International Airport

### Produced by the Industry & Management Department

**This report is protected by copyright and is the exclusive property of the Israel Airports Authority.**

**It must be emphasized that the data in the report are based on the reports of the airlines, and received under their responsibility.**

**The information is intended for personal use, and therefore may not be quoted or passed on to any third party without written permission from the Israel Airports Authority.**

**In addition, no commercial use may be made of this report.**

#### **Edit Yehoshua**

Activity Coordinator

Tel. +972-3-9752017

Email: [edity@iaa.gov.il](mailto:edity@iaa.gov.il)

#### **Rachel Lehava**

Manager, Industrial & Management Dep.

Tel. +972-3-9752019

Email: [rachelle@iaa.gov.il](mailto:rachelle@iaa.gov.il)

#### **Yossi Tzemach**

Head, Industrial & Management Dep.

Tel. +972-3-9752020

Email: [yossiz@iaa.gov.il](mailto:yossiz@iaa.gov.il)



Dear Activity partners, Customers, Employees and Managers at Ben-Gurion Airport and at the Israel Airports Authority.

The year has ended with an increase of 1.6 million international passengers relative to the previous year. Passenger traffic amounted to 24 million international passengers and around 785 thousand domestic passengers. This constitutes a growth of 8.16% compared to last year.

More than 2.4 million international passengers completed departing flight procedures through the newly renovated Terminal 1.

10 new airlines joined the approximately 100 Airlines already operating in Ben Gurion Airport. 6 new destinations were added this year. In all, Ben Gurion Airport now offers flights to 180 destinations in 56 countries.

The year 2020 will demonstrate a new challenges for Ben Gurion Airport, our partners, Airlines, and franchisees. Continued growth in passenger traffic, the reconfiguration of Terminal 1 to serve international and domestic flights, the continued constructions of new infrastructures and technologies.

The main projects in the coming years include:

The expansion of Terminal 3 for the international flight, adding 86 check-in counters, a new and independent baggage sorting system.

Construction of the fifth concourse as set out in the Israel Airports Authority's multiyear plan.

Upgrading of the sorting systems incorporating advanced security technologies, process matching, all with service targeting for the Airport customers.

All of this while remaining faithful to our vision of providing a high level of service, safety, and security.

A heartfelt thanks to all those who contributing to the doing at Ben Gurion Airport, in the top are the employees and their families.





Dear friends and partners,

I hereby respectfully submit for your review a report summarizing the aviation activity at Ben - Gurion International Airport in 2019.

During the year, a total of 24,821,601 passengers on 167,886 international and domestic flights passed through Ben- Gurion Airport.

International passenger traffic in 2019 totaled 24,035,865 passengers, representing an increase of 7.51% compared to 2018.

International aircraft traffic totaled 158,964 flights, representing an increase of 5.05% compared to 2018.

On domestic flights 785,736 passengers passed through Ben- Gurion Airport this year, compared with 591,944 in 2018, an increase of 32.73%.

During the year cargo weighing a total 32.73 tons as handled, representing 351,395 of an increase% compared with 0.49 in 2018.

Israeli airlines carried 7,362,702 passengers in 2019, 30.63% of all travelers passing through Ben - Gurion Airport, an increase of 5.46% relative to the previous year.

The airlines which contributed the most to the increase of passenger traffic this year are: EL AL ISRAEL AIRLINES, WIZZAIR and EASYJET.

The Destination with the highest volume of activity was ISTANBUL, with a total of 1,163,391 passengers to and from, an increase of 8.58% compared to the previous year.

The country with the highest volume of activity was TURKEY, with 2,325,344 passengers, constituting 9.67% of all activity.

Of the leading countries, the highest growth relative to last year was recorded in passenger traffic to TURKEY, UNITED STATES and CYPRUS.

Below you will find additional tables providing details about movements of aircraft, passengers and cargo at Ben - Gurion International Airport.

Sincerely yours,

**Shmuel Zakay**

Managing Director,

Ben-Gurion International Airport



# Content



## Aviation Activity

Aviation Activity Summary	1
International Activity Summary	2 - 4
Domestic Activity Summary	5



## International Activity

Distribution By Months	7 - 8
Distribution By Airlines	9 - 13
Distribution By Countries	14 - 16
Distribution By First Destination	17 - 21



## Cargo Activity

Distribution by Transporter	23
Distribution By Months	23
Distribution By Airlines	24 - 26
Distribution By Countries	27



## Domestic Activity

Distribution By Months	29 - 30
Distribution By Airlines	31





# Passengers and Aircrafts

## Aviation Activity at Ben Gurion International Airport

### International Activity

	Accumulated Since the beginning of the year		
	2019	2018	Rate Of Change
Incoming Aircrafts	79,466	75,635	5.06%
Outgoing Aircrafts	79,498	75,682	5.04%
<b>Total Aircrafts</b>	<b>158,964</b>	<b>151,317</b>	<b>5.05%</b>
Incoming Passengers	11,994,416	11,178,888	7.29%
Outgoing Passengers	12,041,449	11,177,726	7.72%
Transit Passengers	9,853	3,948	149.56%
<b>Total Passengers</b>	<b>24,035,865</b>	<b>22,356,614</b>	<b>7.51%</b>

### Domestic Activity

	Accumulated Since the beginning of the year		
	2019	2018	Rate Of Change
Aircrafts	8,922	5,995	48.82%
Passengers	785,736	591,944	32.73%

### International and Domestic Activity Summary

	Accumulated Since the beginning of the year		
	2019	2018	Rate Of Change
Aircrafts	167,886	157,312	6.72%
Passengers	24,821,601	22,948,558	8.16%





# Passengers and Aircrafts

## Int'l Aviation Activity at Ben Gurion International Airport by Terminal

### Terminal 3

	Accumulated Since the beginning of the year		
	2019	2018	Rate of Change
Incoming Aircrafts	79,466	75,635	5.06%
Outgoing Aircrafts	64,441	62,907	2.43%
<b>Total Aircrafts</b>	<b>143,907</b>	<b>138,542</b>	<b>3.87%</b>
Incoming Passengers	11,994,416	11,178,888	7.29%
Outgoing Passengers	9,578,315	9,134,632	4.85%
Transit Passengers	9,853	3,948	149.56%
<b>Total Passengers</b>	<b>21,572,731</b>	<b>20,313,520</b>	<b>6.19%</b>

### Terminal 1

	Accumulated Since the beginning of the year		
	2019	2018	Rate of Change
Incoming Aircrafts			
Outgoing Aircrafts	15,057	12,775	17.86%
<b>Total Aircrafts</b>	<b>15,057</b>	<b>12,775</b>	<b>17.86%</b>
Incoming Passengers			
Outgoing Passengers	2,463,134	2,043,094	20.55%
<b>Total Passengers</b>	<b>2,463,134</b>	<b>2,043,094</b>	<b>20.55%</b>





# Passengers and Aircrafts

## Int'l Aviation Activity at Ben Gurion International Airport by Flight Type

### Schedule and Charter Flights

	Accumulated Since the beginning of the year		
	2019	2018	Rate of Change
Incoming Aircrafts	73,862	70,375	4.95%
Outgoing Aircrafts	73,873	70,349	5.00%
<b>Total Aircrafts</b>	<b>147,735</b>	<b>140,724</b>	<b>4.98%</b>
Incoming Passengers	11,980,585	11,164,674	7.30%
Outgoing Passengers	12,028,280	11,164,393	7.73%
Transit Passengers	9,853	3,948	149.56%
<b>Total Passengers</b>	<b>24,008,865</b>	<b>22,329,067</b>	<b>7.52%</b>

### Private Flights

	Accumulated Since the beginning of the year		
	2019	2018	Rate of Change
Incoming Aircrafts	3,180	2,832	12.28%
Outgoing Aircrafts	3,205	2,896	10.66%
<b>Total Aircrafts</b>	<b>6,385</b>	<b>5,728</b>	<b>11.46%</b>
Incoming Passengers	10,875	9,943	9.37%
Outgoing Passengers	10,716	9,705	10.41%
<b>Total Passengers</b>	<b>21,591</b>	<b>19,648</b>	<b>9.88%</b>







# Passengers and Aircrafts

## Int'l Aviation Activity at Ben Gurion International Airport by Flight Type

### Cargo Flights

	Accumulated Since the beginning of the year		
	2019	2018	Rate of Change
Incoming Aircrafts	2,205	2,147	2.70%
Outgoing Aircrafts	2,175	2,141	1.58%
<b>Total Aircrafts</b>	<b>4,380</b>	<b>4,288</b>	<b>2.14%</b>
Incoming Passengers	681	967	-29.57%
Outgoing Passengers	827	918	-9.91%
<b>Total Passengers</b>	<b>1,508</b>	<b>1,885</b>	<b>-20.00%</b>

### Other Flights

	Accumulated Since the beginning of the year		
	2019	2018	Rate of Change
Incoming Aircrafts	219	281	-22.06%
Outgoing Aircrafts	245	296	-17.22%
<b>Total Aircrafts</b>	<b>464</b>	<b>577</b>	<b>-19.58%</b>
Incoming Passengers	2,275	3,304	-31.14%
Outgoing Passengers	1,626	2,710	-40.00%
<b>Total Passengers</b>	<b>3,901</b>	<b>6,014</b>	<b>-35.13%</b>





# Passengers and Aircrafts

## Domestic Aviation Activity at Ben Gurion International Airport by Flight Type

### Schedule Flights

	Accumulated Since the beginning of the year		
	2019	2018	Rate of Change
Aircrafts	7,649	4,853	57.61%
Passengers	782,979	588,609	33.02%

### Private Flights

	Accumulated Since the beginning of the year		
	2019	2018	Rate of Change
Aircrafts	529	561	-5.70%
Passengers	815	466	74.89%

### Other Flights

	Accumulated Since the beginning of the year		
	2019	2018	Rate of Change
Aircrafts	744	581	28.05%
Passengers	1,942	2,869	-32.31%



# International Activity



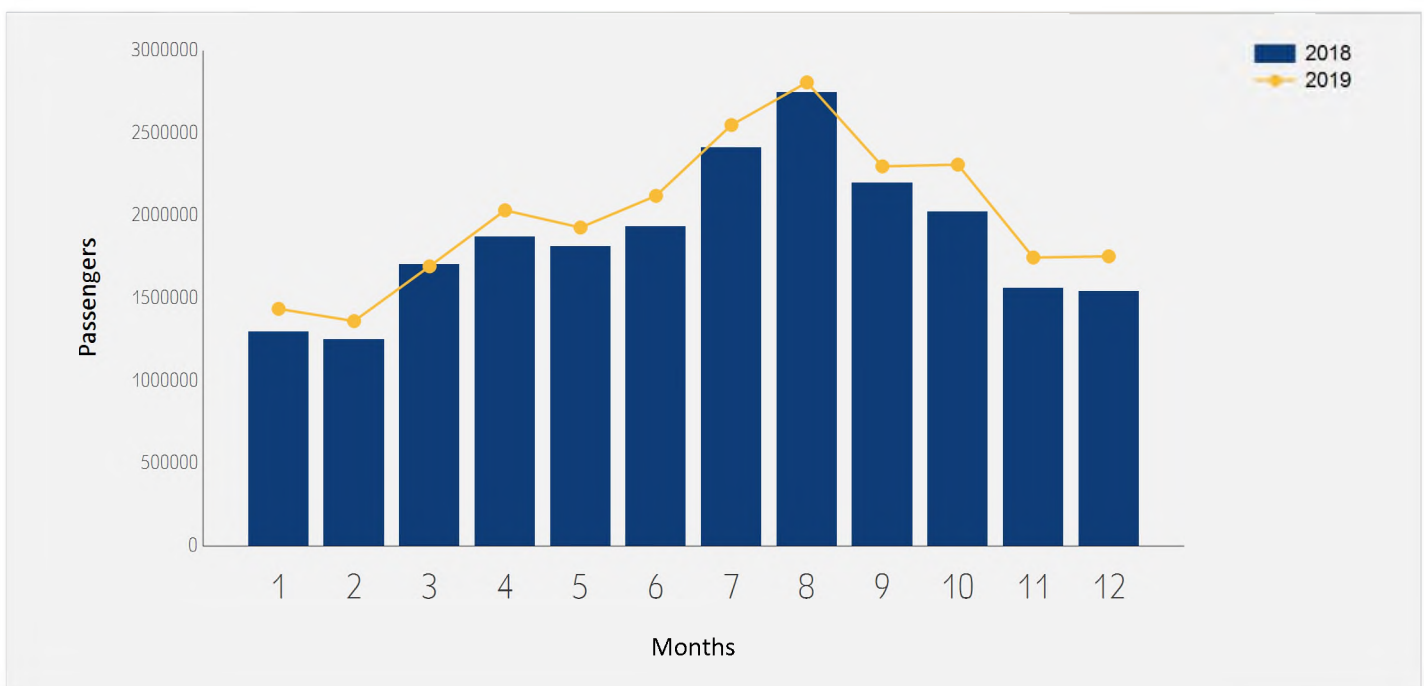




# International Passenger Traffic

## Distribution by Months

Months	2019	2018	Rate of Change
January	1,435,735	1,296,898	10.70%
February	1,361,318	1,249,161	8.97%
March	1,693,381	1,706,320	-0.75%
April	2,032,433	1,871,147	8.61%
May	1,928,014	1,813,139	6.33%
June	2,120,242	1,933,843	9.63%
July	2,549,250	2,412,296	5.67%
August	2,807,327	2,747,660	2.17%
September	2,298,818	2,200,153	4.48%
October	2,309,127	2,023,412	14.12%
November	1,746,441	1,559,435	11.99%
December	1,753,779	1,543,150	13.64%
<b>Total</b>	<b>24,035,865</b>	<b>22,356,614</b>	<b>7.51%</b>

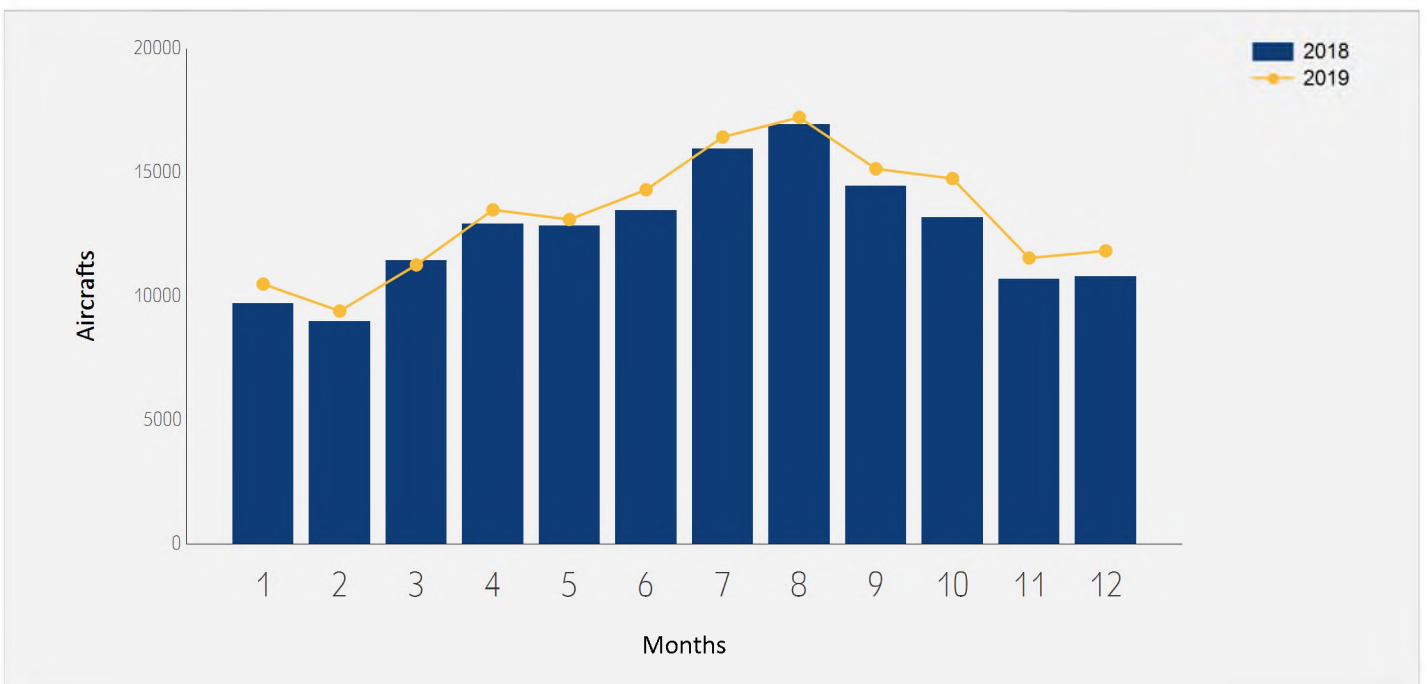




# International Aircraft Traffic

## Distribution by Months

Months	2019	2018	Rate of Change
January	10,490	9,695	8.20%
February	9,403	8,977	4.74%
March	11,265	11,442	-1.54%
April	13,489	12,915	4.44%
May	13,098	12,831	2.08%
June	14,300	13,466	6.19%
July	16,426	15,949	2.99%
August	17,222	16,941	1.65%
September	15,146	14,439	4.89%
October	14,751	13,175	11.96%
November	11,542	10,692	7.94%
December	11,832	10,795	9.60%
<b>Total</b>	<b>158,964</b>	<b>151,317</b>	<b>5.05%</b>







# Int'l Accumulated Passenger Traffic

## Distribution by Airline

		Accumulated 2019		Accumulated 2018		
Airline		Passengers	Rate of Total	Passengers	Rate of Total	Rate of Change
LY	EL AL ISRAEL AIRLINES	5,831,656	24.26%	5,634,597	25.20%	3.49%
W6	WIZZAIR	1,279,197	5.32%	1,074,296	4.80%	19.07%
EZY	EASYJET	1,172,100	4.87%	1,014,987	4.53%	15.47%
TK	TURKISH AIRLINES	1,170,856	4.87%	1,086,257	4.85%	7.78%
SU	AEROFLOT RUSSIAN AIRLINES	772,517	3.21%	761,352	3.40%	1.46%
6H	ISRAIR AIRLINES	767,626	3.19%	656,798	2.93%	16.87%
IZ	ARKIA ISRAELI AIRLINES	759,632	3.16%	686,213	3.06%	10.69%
FR	RYANAIR	752,868	3.13%	517,797	2.31%	45.39%
UA	UNITED AIRLINES	682,609	2.83%	603,532	2.69%	13.10%
PS	UKRAINE INTL AIR	676,219	2.81%	705,742	3.15%	-4.18%
LH	LUFTHANSA	604,994	2.51%	601,990	2.69%	0.49%
PC	PEGASUS AIRLINES	572,149	2.38%	574,213	2.56%	-0.35%
A3	AEGEAN AIRLINES	502,918	2.09%	509,218	2.27%	-1.23%
AZ	ALITALIA	468,337	1.94%	472,620	2.11%	-0.90%
TO	TRANSAVIA FRANCE	374,685	1.55%	315,036	1.40%	18.93%
BA	BRITISH AIRWAYS PLC	358,575	1.49%	371,177	1.66%	-3.39%
AF	AIR FRANCE	322,807	1.34%	311,194	1.39%	3.73%
OS	AUSTRIAN AIRLINES	321,645	1.33%	247,238	1.10%	30.09%
LX	SWISS INT'L AIRLINES	319,794	1.33%	311,998	1.39%	2.49%
LO	LOT POLISH AIRLINES	287,684	1.19%	290,394	1.29%	-0.93%
DL	DELTA AIRLINES	262,057	1.09%	198,898	0.88%	31.75%





# Int'l Accumulated Passenger Traffic

## Distribution by Airline

		Accumulated 2019		Accumulated 2018		
Airline		Passengers	Rate of Total	Passengers	Rate of Total	Rate of Change
BZ	BLUE BIRD AIRWAYS	250,088	1.04%	183,040	0.81%	36.63%
AEA	AIR EUROPA	239,232	0.99%	198,615	0.88%	20.45%
U6	URAL AIR	239,104	0.99%	208,765	0.93%	14.53%
HV	TRANSAVIA	212,639	0.88%	193,574	0.86%	9.84%
AC	AIR CANADA	211,218	0.87%	214,055	0.95%	-1.32%
QS	SMARTWINGS	202,711	0.84%	322,521	1.44%	-37.14%
KK	ATLAS GLOBAL	200,393	0.83%	99,606	0.44%	101.18%
SN	BRUSSELS AIRLINES	197,992	0.82%	208,056	0.93%	-4.83%
IB	IBERIA	191,935	0.79%	182,490	0.81%	5.17%
CX	CATHAY PACIFIC AIRWAYS	172,118	0.71%	126,261	0.56%	36.31%
RJ	ROYAL JORDANIAN	169,671	0.70%	156,126	0.69%	8.67%
VY	VUELING AIRLINES S.A.	164,343	0.68%	150,040	0.67%	9.53%
HU	HAINAN AIRLINES	154,646	0.64%	150,387	0.67%	2.83%
ET	ETHIOPIAN AIRLINES	154,216	0.64%	158,694	0.70%	-2.82%
CAI	CORENDON AIRLINES	153,562	0.63%	139,251	0.62%	10.27%
A9	GEORGIAN AIRWAYS	141,929	0.59%	111,838	0.50%	26.90%
D8	NORWEGIAN AIR SHUTTLE	132,649	0.55%	107,778	0.48%	23.07%
RO	TAROM - RUMANIAN AIR TRAN	129,381	0.53%	142,517	0.63%	-9.21%
KL	K.L.M.	123,378	0.51%	124,628	0.55%	-1.00%
FB	BULGARIA AIR	117,408	0.48%	100,546	0.44%	16.77%
8Q	ONUR AIR	115,074	0.47%	103,408	0.46%	11.28%





# Int'l Accumulated Passenger Traffic

## Distribution by Airline

		Accumulated 2019		Accumulated 2018		
Airline		Passengers	Rate of Total	Passengers	Rate of Total	Rate of Change
FV	ROSSIYA AIRLINES	104,224	0.43%	115,469	0.51%	-9.73%
AI	AIR INDIA	101,945	0.42%	57,791	0.25%	76.40%
CY	CYPRUS AIRWAYS	99,413	0.41%	42,762	0.19%	132.47%
TWI	TAILWIND AIRLINES	93,806	0.39%	78,130	0.34%	20.06%
OB	BLUE AIR TRANSPORT AERIAN	92,605	0.38%	94,873	0.42%	-2.39%
ENT	ENTER AIR	86,774	0.36%	87,396	0.39%	-0.71%
U8	TUS AIRWAYS	85,614	0.35%	141,544	0.63%	-39.51%
TP	AIR PORTUGAL	81,610	0.33%			
BUC	BULGARIAN AIR CHARTER	77,723	0.32%	109,971	0.49%	-29.32%
DY	NORWEGIAN AIR SHUTTLE ASA	77,365	0.32%	53,713	0.24%	44.03%
CXI	CORENDON EUROPE	74,800	0.31%	68,971	0.30%	8.45%
B2	BELAVIA AIRLINE	70,422	0.29%	62,808	0.28%	12.12%
NO	NEOS	67,712	0.28%	81,725	0.36%	-17.14%
LA	LATAM AIRLINES	65,612	0.27%	3,410	0.01%	
HY	UZBEKISTAN AIR	61,897	0.25%	62,183	0.27%	-0.45%
KE	KOREAN AIR	61,089	0.25%	57,721	0.25%	5.83%
9U	AIR MOLDOVA	58,941	0.24%	20,987	0.09%	180.84%
J2	AZERBAIJAN AIRLINES	54,515	0.22%	44,820	0.20%	21.63%
KM	AIR MALTA	47,636	0.19%	43,807	0.19%	8.74%
BT	AIR BALTIC	46,570	0.19%	47,978	0.21%	-2.93%
C3	TRADE AIR	44,963	0.18%	16,099	0.07%	179.29%





# Int'l Accumulated Passenger Traffic

## Distribution by Airline

		Accumulated 2019		Accumulated 2018		
Airline		Passengers	Rate of Total	Passengers	Rate of Total	Rate of Change
VS	VIRGIN ATLANTIC AIRWAYS	44,523	0.18%			
AY	FINNAIR	42,970	0.17%	40,921	0.18%	5.00%
JU	AIR SERBIA	42,841	0.17%	43,129	0.19%	-0.66%
4D	AIR SINAI	41,854	0.17%	31,970	0.14%	30.91%
3U	SICHUAN AIRLINES	40,392	0.16%	6,566	0.02%	515.16%
MJ	MYWAY AIRLINES	36,531	0.15%	15,535	0.06%	135.15%
EAF	ELECTRA AIRWAYS	34,100	0.14%			
5O	ASL AIRLINES	27,104	0.11%	11,747	0.05%	130.73%
	OTHERS	235,702	0.98%	586,845	2.62%	-59.83%
	<b>TOTAL</b>	<b>24,035,865</b>		<b>22,356,614</b>		<b>7.51%</b>





# Int'l Accumulated Passenger Traffic

## Distribution by Israeli Airlines

		Accumulated 2019		Accumulated 2018		
Airlines		Passengers	Rate of Total	Passengers	Rate of Total	Rate of Change
LY	EL AL ISRAEL AIRLINES	5,831,656	24.26%	5,634,597	25.20%	3.49%
6H	ISRAIR AIRLINES	767,626	3.19%	656,798	2.93%	16.87%
IZ	ARKIA ISRAELI AIRLINES	759,632	3.16%	686,213	3.06%	10.69%
	OTHERS	3,788	0.01%	3,834	0.01%	-1.19%
	<b>TOTAL</b>	<b>7,362,702</b>		<b>6,981,442</b>		<b>5.46%</b>







# Int'l Accumulated Passenger Traffic

## Distribution by Countries

Countries	Accumulated 2019		Accumulated 2018		
	Passengers	Rate of Total	Passengers	Rate of Total	Rate of Change
TURKEY	2,325,344	9.67%	2,112,924	9.45%	10.05%
UNITED STATES	1,828,438	7.60%	1,665,742	7.45%	9.76%
ITALY	1,531,523	6.37%	1,431,154	6.40%	7.01%
FRANCE	1,515,011	6.30%	1,397,715	6.25%	8.39%
GREECE	1,450,494	6.03%	1,305,723	5.84%	11.08%
GERMANY	1,380,695	5.74%	1,431,467	6.40%	-3.54%
RUSSIAN FEDERATION	1,321,030	5.49%	1,280,599	5.72%	3.15%
UNITED KINGDOM	1,294,661	5.38%	1,228,611	5.49%	5.37%
SPAIN	1,025,532	4.26%	980,064	4.38%	4.63%
UKRAINE	918,956	3.82%	962,666	4.30%	-4.54%
ROMANIA	817,143	3.39%	804,674	3.59%	1.54%
POLAND	774,992	3.22%	812,230	3.63%	-4.58%
CYPRUS	723,526	3.01%	573,963	2.56%	26.05%
SWITZERLAND	683,552	2.84%	675,835	3.02%	1.14%
NETHERLANDS	657,264	2.73%	629,846	2.81%	4.35%
AUSTRIA	615,751	2.56%	419,970	1.87%	46.61%
HUNGARY	555,831	2.31%	462,474	2.06%	20.18%
CHINA	527,857	2.19%	451,962	2.02%	16.79%
BULGARIA	513,608	2.13%	514,770	2.30%	-0.22%
GEORGIA	473,452	1.96%	362,823	1.62%	30.49%
CZECH REPUBLIC	381,693	1.58%	388,521	1.73%	-1.75%
BELGIUM	294,788	1.22%	289,215	1.29%	1.92%





# Int'l Accumulated Passenger Traffic

## Distribution by Countries

Countries	Accumulated 2019		Accumulated 2018		
	Passengers	Rate of Total	Passengers	Rate of Total	Rate of Change
CANADA	282,082	1.17%	299,723	1.34%	-5.88%
THAILAND	246,057	1.02%	222,889	0.99%	10.39%
JORDAN	180,230	0.74%	158,601	0.70%	13.63%
INDIA	162,895	0.67%	115,715	0.51%	40.77%
ETHIOPIA	153,844	0.64%	158,047	0.70%	-2.65%
PORTUGAL	141,483	0.58%	75,897	0.33%	86.41%
AZERBAIJAN	96,552	0.40%	86,127	0.38%	12.10%
SERBIA	89,577	0.37%	96,449	0.43%	-7.12%
LITHUANIA	85,338	0.35%	59,506	0.26%	43.41%
MOLDOVA	71,208	0.29%	44,090	0.19%	61.50%
BELARUS	70,520	0.29%	62,853	0.28%	12.19%
LATVIA	70,043	0.29%	78,549	0.35%	-10.82%
SOUTH AFRICA	67,054	0.27%	56,056	0.25%	19.61%
FINLAND	65,792	0.27%	53,651	0.23%	22.62%
CROATIA	63,727	0.26%	58,920	0.26%	8.15%
UZBEKISTAN	61,897	0.25%	62,204	0.27%	-0.49%
SOUTH KOREA	61,333	0.25%	57,730	0.25%	6.24%
SWEDEN	51,763	0.21%	50,931	0.22%	1.63%
DENMARK	50,430	0.20%	51,122	0.22%	-1.35%
MALTA	48,391	0.20%	47,683	0.21%	1.48%
EGYPT	43,543	0.18%	35,765	0.15%	21.74%
MONTENEGRO	41,783	0.17%	46,307	0.20%	-9.76%





# Int'l Accumulated Passenger Traffic

## Distribution by Countries

Countries	Accumulated 2019		Accumulated 2018		
	Passengers	Rate of Total	Passengers	Rate of Total	Rate of Change
BRAZIL	38,501	0.16%	1,685		
NORWAY	32,333	0.13%	14,945	0.06%	116.34%
CHILE	27,494	0.11%	1,820		
ALBANIA	23,332	0.09%	12,175	0.05%	91.63%
TANZANIA	19,782	0.08%	38,625	0.17%	-48.78%
SLOVENIA	19,367	0.08%	18,930	0.08%	2.30%
OTHERS	58,373	0.24%	106,671	0.47%	-45.27%
<b>TOTAL</b>	<b>24,035,865</b>		<b>22,356,614</b>		<b>7.51%</b>





# Int'l Accumulated Passenger Traffic

## Distribution by First Destination

Destination	Accumulated 2019		Accumulated 2018		
	Passengers	Rate of Total	Passengers	Rate of Total	Rate of Change
ISTANBUL	1,163,391	4.84%	1,071,422	4.79%	8.58%
PARIS-CHARLES DE GAULLE	852,766	3.54%	871,391	3.89%	-2.13%
ROME - FIUMICINO	814,260	3.38%	815,891	3.64%	-0.19%
MOSCOW	772,706	3.21%	761,621	3.40%	1.45%
LONDON - HEATHROW	678,289	2.82%	648,452	2.90%	4.60%
NEW YORK - NEWARK	661,455	2.75%	644,151	2.88%	2.68%
KIEV, KYIV-BORISPOL	647,741	2.69%	654,145	2.92%	-0.97%
NEW YORK - J.F.KENNEDY	632,064	2.62%	610,437	2.73%	3.54%
BUCHAREST - OTOPENI	616,106	2.56%	593,846	2.65%	3.74%
AMSTERDAM	606,442	2.52%	585,110	2.61%	3.64%
VIENNA	598,468	2.48%	412,087	1.84%	45.22%
MADRID	568,529	2.36%	517,437	2.31%	9.87%
ANTALYA	533,159	2.21%	490,892	2.19%	8.61%
ATHENS	521,374	2.16%	440,491	1.97%	18.36%
ISTANBUL-SABIHA GOKCHEN	515,180	2.14%	467,711	2.09%	10.14%
BUDAPEST	511,154	2.12%	431,444	1.92%	18.47%
FRANKFURT	505,051	2.10%	498,312	2.22%	1.35%
LARNACA	497,163	2.06%	424,517	1.89%	17.11%
LUTON	486,604	2.02%	473,104	2.11%	2.85%
ZURICH	462,096	1.92%	451,444	2.01%	2.35%
WARSAW	460,198	1.91%	456,251	2.04%	0.86%
BARCELONA	431,273	1.79%	414,432	1.85%	4.06%





# Int'l Accumulated Passenger Traffic

## Distribution by First Destination

Destination	Accumulated 2019		Accumulated 2018		
	Passengers	Rate of Total	Passengers	Rate of Total	Rate of Change
PRAGUE-RUZYNE	381,616	1.58%	388,367	1.73%	-1.73%
MUNICH	370,126	1.53%	356,876	1.59%	3.71%
PARIS-ORLY	295,300	1.22%	269,901	1.20%	9.41%
MILAN-MALPENSA	293,573	1.22%	276,151	1.23%	6.30%
BRUSSELS	280,654	1.16%	287,614	1.28%	-2.41%
HONG KONG INT'L	280,243	1.16%	244,977	1.09%	14.39%
BERLIN -SCHOENEFELD	280,094	1.16%	286,524	1.28%	-2.24%
HERAKLION	279,366	1.16%	269,068	1.20%	3.82%
SOFIA	274,292	1.14%	249,960	1.11%	9.73%
RHODES-PARADISI	263,665	1.09%	286,270	1.28%	-7.89%
TBILISI	254,409	1.05%	204,256	0.91%	24.55%
TORONTO	251,498	1.04%	244,413	1.09%	2.89%
BANGKOK INTL.-SUARNABHUM	246,057	1.02%	222,889	0.99%	10.39%
SAN FRANCISCO	228,395	0.95%	178,669	0.79%	27.83%
PAPHOS	226,320	0.94%	149,446	0.66%	51.43%
BATUMI	219,043	0.91%	158,561	0.70%	38.14%
THESSALONIKI	190,129	0.79%	124,897	0.55%	52.22%
AMMAN (QUEEN ALIA INT'L)	179,161	0.74%	157,460	0.70%	13.78%
ADDIS ABABA	153,844	0.64%	158,047	0.70%	-2.65%
GENEVA	152,175	0.63%	146,321	0.65%	4.00%
LISBON	139,412	0.58%	58,633	0.26%	137.77%
BURGAS	137,350	0.57%	147,460	0.65%	-6.85%







# Int'l Accumulated Passenger Traffic

## Distribution by First Destination

Destination	Accumulated 2019		Accumulated 2018		
	Passengers	Rate of Total	Passengers	Rate of Total	Rate of Change
BERLIN TEGEL	133,973	0.55%	148,015	0.66%	-9.48%
ST. PETERSBURG	133,123	0.55%	147,779	0.66%	-9.91%
ODESSA	131,286	0.54%	153,186	0.68%	-14.29%
MOSCOW-DOMODEDOVO	130,098	0.54%	153,364	0.68%	-15.17%
SOCHI	127,333	0.52%	60,347	0.26%	111.00%
BEIJING	124,112	0.51%	122,795	0.54%	1.07%
KRAKOW	122,604	0.51%	82,872	0.37%	47.94%
MOSCOW-ZHUKOVSKY INTL AIR	105,392	0.43%	81,736	0.36%	28.94%
LYON - SATOLAS	102,578	0.42%	82,225	0.36%	24.75%
DELHI	102,120	0.42%	57,886	0.25%	76.41%
VENICE	101,662	0.42%	80,602	0.36%	26.12%
LOS ANGELES	96,999	0.40%	100,642	0.45%	-3.61%
VARNA	96,665	0.40%	111,829	0.50%	-13.55%
BAKU HEYDAR ALIYEV INT'L	96,541	0.40%	86,117	0.38%	12.10%
BERGAMO	89,679	0.37%	85,013	0.38%	5.48%
BELGRADE	89,577	0.37%	96,449	0.43%	-7.12%
MIAMI INTERNATIONAL	79,365	0.33%	74,384	0.33%	6.69%
MARSEILLE	74,544	0.31%	62,514	0.27%	19.24%
KATOWICE	71,543	0.29%	75,597	0.33%	-5.36%
CHISINAU	71,208	0.29%	44,090	0.19%	61.50%
NICE	70,803	0.29%	67,622	0.30%	4.70%
MINSK	70,512	0.29%	62,850	0.28%	12.19%





# Int'l Accumulated Passenger Traffic

## Distribution by First Destination

Destination	Accumulated 2019		Accumulated 2018		
	Passengers	Rate of Total	Passengers	Rate of Total	Rate of Change
RIGA	70,043	0.29%	78,549	0.35%	-10.82%
BASEL	69,102	0.28%	77,997	0.34%	-11.40%
JOHANNESBURG	67,054	0.27%	56,043	0.25%	19.64%
BOSTON-LOGAN INT	65,643	0.27%	56,216	0.25%	16.76%
NAPLES-CAPODICHINO	64,988	0.27%	44,429	0.19%	46.27%
KOS	62,607	0.26%	68,142	0.30%	-8.12%
MANCHESTER	62,230	0.25%	38,368	0.17%	62.19%
TASHKENT	61,897	0.25%	62,204	0.27%	-0.49%
INCHEON INTL AIRPORT	61,315	0.25%	57,721	0.25%	6.22%
DALAMAN	60,567	0.25%	48,443	0.21%	25.02%
VILAFRANCA-VERONA	57,694	0.24%	69,512	0.31%	-17.00%
IASI	57,325	0.23%	63,430	0.28%	-9.62%
VILNIUS INTL	56,578	0.23%	53,731	0.24%	5.29%
HELSINKI	56,014	0.23%	42,886	0.19%	30.61%
SHANGHAI PUDONG	52,601	0.21%	57,080	0.25%	-7.84%
MUMBAI	51,886	0.21%	57,668	0.25%	-10.02%
STOCKHOLM-ARLANDA	51,752	0.21%	49,983	0.22%	3.53%
CLUJ NAPOCA	51,474	0.21%	66,070	0.29%	-22.09%
EINDHOVEN	50,581	0.21%	44,506	0.19%	13.64%
COPENHAGEN KASTRUP	50,425	0.20%	51,118	0.22%	-1.35%
WASHINGTON-DULLES	49,341	0.20%	40		
MALTA	48,391	0.20%	47,683	0.21%	1.48%





# Int'l Accumulated Passenger Traffic

## Distribution by First Destination

Destination	Accumulated 2019		Accumulated 2018		
	Passengers	Rate of Total	Passengers	Rate of Total	Rate of Change
NANTES	47,114	0.19%	3,622	0.01%	
DEBRECEN	44,673	0.18%	31,030	0.13%	43.96%
LONDON -STANSTED	44,655	0.18%	30,590	0.13%	45.97%
KHARKOV	43,261	0.17%	47,180	0.21%	-8.30%
CORFU	42,784	0.17%	19,478	0.08%	119.65%
CAIRO INTERNATIONAL	42,712	0.17%	32,426	0.14%	31.72%
CAGLIARI-ELMAS	41,834	0.17%	1,253		
CHENGDU	40,392	0.16%	6,566	0.02%	515.16%
DNEPROPETROVSK	39,918	0.16%	32,725	0.14%	21.98%
BODRUM	39,746	0.16%	34,203	0.15%	16.20%
CATANIA FONTANAROSSA	39,477	0.16%	35,385	0.15%	11.56%
SAO PAULO (GUARULHOS INT')	38,120	0.15%	1,590		
BADEN BADEN	36,985	0.15%	36,555	0.16%	1.17%
TIVAT	36,452	0.15%	40,261	0.18%	-9.46%
OTHERS	1,044,326	4.34%	1,172,662	5.24%	-10.94%
<b>TOTAL</b>	<b>24,035,865</b>		<b>22,356,614</b>		<b>7.51%</b>



# Cargo Activity







# Cargo Handling

## Distribution by Transporter

Transporter	2019 (Ton)	2018 (Ton)	Rate of Change
Cargo on Passenger Aircrafts - Incoming	108,628	103,103	5.35%
Cargo on Passenger Aircrafts - Outgoing	80,032	80,547	-0.63%
<b>Total Cargo on Passenger Aircrafts</b>	<b>188,660</b>	<b>183,648</b>	<b>2.72%</b>
Cargo on Cargo Aircrafts - Incoming	97,877	97,844	0.03%
Cargo on Cargo Aircrafts - Outgoing	64,860	68,181	-4.87%
<b>Total Cargo on Cargo Aircrafts</b>	<b>162,735</b>	<b>166,025</b>	<b>-1.98%</b>
<b>Total</b>	<b>351,395</b>	<b>349,673</b>	<b>0.49%</b>

## Distribution by Months

Month	2019 (Ton)	2018 (Ton)	Rate of Change
January	28,725	27,987	2.63%
February	27,197	27,277	-0.29%
March	32,790	32,902	-0.34%
April	28,818	27,165	6.08%
May	28,318	30,350	-6.69%
June	26,837	28,261	-5.03%
July	28,554	30,133	-5.24%
August	28,847	29,621	-2.61%
September	29,091	25,317	14.90%
October	26,135	28,597	-8.60%
November	31,989	29,965	6.75%
December	34,094	32,098	6.21%
<b>Total</b>	<b>351,395</b>	<b>349,673</b>	<b>0.49%</b>







# Accumulated Cargo Handling on Passengers Aircrafts

## Distribution by Airline

		Accumulated 2019				Accumulated 2018				
Airline		Incoming Cargo (Ton)	Outgoing Cargo (Ton)	Cargo (Ton)	Rate of Total	Incoming Cargo (Ton)	Outgoing Cargo (Ton)	Cargo (Ton)	Rate of Total	Rate of Change
LY	EL AL ISRAEL AIRLINES	32,939	33,255	66,195	35.08%	33,082	34,826	67,908	36.97%	-2.52%
UA	UNITED AIRLINES	9,532	11,743	21,275	11.27%	8,556	11,681	20,237	11.01%	5.12%
TK	TURKISH AIRLINES	11,766	3,084	14,849	7.87%	12,784	2,715	15,498	8.43%	-4.18%
SU	AEROFLOT RUSSIAN AIRLINES	7,499	4,246	11,745	6.22%	7,842	3,367	11,210	6.10%	4.77%
LX	SWISS INT'L AIRLINES	7,044	4,680	11,724	6.21%	8,878	4,976	13,854	7.54%	-15.37%
AC	AIR CANADA	4,320	3,590	7,910	4.19%	4,152	3,720	7,872	4.28%	0.48%
CX	CATHAY PACIFIC AIRWAYS	4,061	2,930	6,991	3.70%	2,719	2,757	5,476	2.98%	27.66%
HU	HAINAN AIRLINES	4,888	2,055	6,944	3.68%	4,096	2,709	6,805	3.70%	2.04%
BA	BRITISH AIRWAYS PLC	4,377	2,525	6,902	3.65%	4,689	3,195	7,885	4.29%	-12.46%
AE A	AIR EUROPA	4,160	988	5,147	2.72%	2,688	915	3,603	1.96%	42.85%
IB	IBERIA	2,569	1,427	3,995	2.11%	2,065	1,111	3,177	1.72%	25.74%
DL	DELTA AIRLINES	2,277	1,479	3,756	1.99%	1,906	1,600	3,506	1.90%	7.13%
AI	AIR INDIA	2,052	1,049	3,100	1.64%	813	1,086	1,899	1.03%	63.24%
KE	KOREAN AIR	1,126	760	1,885	0.99%	969	812	1,781	0.96%	5.83%
LH	LUFTHANSA	969	785	1,754	0.92%	1,042	666	1,708	0.93%	2.69%
3U	SICHUAN AIRLINES	1,002	602	1,604	0.85%	297	40	337	0.18%	375.96%
PC	PEGASUS AIRLINES	1,078	445	1,523	0.80%	1,058	667	1,725	0.93%	-11.71%
VS	VIRGIN ATLANTIC AIRWAYS	761	521	1,283	0.68%					
PS	UKRAINE INTL AIR	561	497	1,058	0.56%	503	756	1,258	0.68%	-15.89%
AZ	ALITALIA	496	446	943	0.49%	176	23	199	0.10%	373.86%
RJ	ROYAL JORDANIAN	817	116	933	0.49%	930	515	1,445	0.78%	-35.43%
KK	ATLAS GLOBAL	849	18	867	0.45%	427	12	439	0.23%	97.49%





# Accumulated Cargo Handling on Passengers Aircrafts

## Distribution by Airline

		Accumulated 2019				Accumulated 2018				
Airline		Incoming Cargo (Ton)	Outgoing Cargo (Ton)	Cargo (Ton)	Rate of Total	Incoming Cargo (Ton)	Outgoing Cargo (Ton)	Cargo (Ton)	Rate of Total	Rate of Change
LA	LATAM AIRLINES	285	433	718	0.38%		13	14		
ET	ETHIOPIAN AIRLINES	483	133	616	0.32%	246	236	482	0.26%	27.80%
AF	AIR FRANCE	151	341	492	0.26%	117	153	270	0.14%	82.22%
LO	LOT POLISH AIRLINES	390	88	478	0.25%	292	92	383	0.20%	24.80%
QS	SMARTWINGS	333	102	435	0.23%	333	124	457	0.24%	-4.81%
HY	UZBEKISTAN AIR	141	265	406	0.21%	276	506	783	0.42%	-48.14%
SN	BRUSSELS AIRLINES	280	119	399	0.21%	563	88	651	0.35%	-38.70%
OS	AUSTRIAN AIRLINES	213	168	381	0.20%	212	124	336	0.18%	13.39%
RO	TAROM - RUMANIAN AIR TRAN	183	134	317	0.16%	192	163	354	0.19%	-10.45%
A3	AEGEAN AIRLINES	113	199	311	0.16%	145	77	222	0.12%	40.09%
IZ	ARKIA ISRAELI AIRLINES	119	155	274	0.14%	158	165	323	0.17%	-15.17%
BT	AIR BALTIC	122	119	240	0.12%	129	85	214	0.11%	12.14%
	OTHERS	674	535	1,209	0.64%	766	573	1,338	0.72%	-9.64%
	<b>TOTAL</b>	<b>108,629</b>	<b>80,032</b>	<b>188,660</b>		<b>103,102</b>	<b>80,547</b>	<b>183,649</b>		<b>2.72%</b>





# Accumulated Cargo Handling on Cargo Aircrafts

## Distribution by Airline

		Accumulated 2019				Accumulated 2018				
Airline		Incoming Cargo Ton)	Outgoing Cargo Ton)	Cargo Ton)	Rate of Total	Incoming Cargo Ton)	Outgoing Cargo Ton)	Cargo Ton)	Rate of Total	Rate of Change
ICL	C.A.L ISRAELI CARGO	29,309	21,202	50,511	31.03%	33,003	25,670	58,673	35.33%	-13.91%
MNB	MNG CARGO AIRLINES	10,497	3,721	14,218	8.73%	10,963	4,159	15,123	9.10%	-5.98%
LY	EL AL ISRAEL AIRLINES	7,881	5,740	13,621	8.36%	18,066	9,659	27,725	16.69%	-50.87%
3V	ASL AIRLINES BELGIUM	8,926	4,213	13,139	8.07%	2,886	1,715	4,601	2.77%	185.56%
LH	LUFTHANSA	7,263	5,483	12,747	7.83%	7,090	4,636	11,726	7.06%	8.70%
TK	TURKISH AIRLINES	8,340	3,595	11,935	7.33%	5,313	3,812	9,125	5.49%	30.79%
AZG	SILK WAY WEST AIRLINES	4,992	6,268	11,260	6.91%	6,298	7,113	13,411	8.07%	-16.03%
QY	EUROPEAN AIR TRANSPORT	6,225	4,811	11,036	6.78%					
FX	FEDERAL EXPRESS	5,774	4,583	10,356	6.36%	4,561	4,182	8,743	5.26%	18.44%
FRH	ACE BELGIUM FREIGHTERS	3,930	2,793	6,723	4.13%					
BCS	EUROPEAN AIR TRANSPORT	1,998	1,573	3,571	2.19%	7,450	5,830	13,280	7.99%	-73.10%
GTI	ATLAS AIR	1,936	287	2,223	1.36%					
ADB	ANTONOV AIRLINES	290	163	453	0.27%	17		17	0.01%	
P3	CARGOLOGICAIR	241	84	325	0.19%	1,289	648	1,937	1.16%	-83.22%
	OTHERS	275	344	620	0.38%	907	757	1,664	1.00%	-62.74%
	<b>TOTAL</b>	<b>97,877</b>	<b>64,860</b>	<b>162,736</b>		<b>97,845</b>	<b>68,180</b>	<b>166,025</b>		<b>-1.98%</b>





# Accumulated Cargo Handling on Cargo Aircrafts

## Distribution by Countries

Countries	Accumulated 2019				Accumulated 2018				
	Incoming Cargo (Ton)	Outgoing Cargo (Ton)	Cargo (Ton)	Rate of Total	Incoming Cargo (Ton)	Outgoing Cargo (Ton)	Cargo (Ton)	Rate of Total	Rate of Change
BELGIUM	33,078	32,421	65,499	40.24%	41,508	34,711	76,220	45.90%	-14.06%
GERMANY	24,766	10,290	35,057	21.54%	25,944	9,636	35,580	21.43%	-1.46%
TURKEY	13,219	11,918	25,137	15.44%	9,944	12,190	22,134	13.33%	13.56%
AZERBAIJAN	4,992	6,317	11,309	6.94%	6,298	7,151	13,449	8.10%	-15.91%
NORWAY	9,877		9,877	6.06%	4,870		4,870	2.93%	102.81%
CYPRUS	7,994	18	8,012	4.92%	6,756	88	6,844	4.12%	17.06%
FRANCE	1,005	1,152	2,157	1.32%	1,147	1,135	2,282	1.37%	-5.47%
SPAIN	1,878	14	1,892	1.16%	178		178	0.10%	962.92%
AUSTRIA	277	1,439	1,716	1.05%	19	1,501	1,520	0.91%	12.89%
UNITED STATES	350	61	411	0.25%	89	9	98	0.05%	319.38%
SWITZERLAND	214	191	405	0.24%	812		812	0.48%	-50.12%
CROATIA		233	233	0.14%		72	72	0.04%	223.61%
ICELAND		221	221	0.13%					
OTHERS	226	585	810	0.49%	280	1,687	1,967	1.18%	-58.82%
<b>TOTAL</b>	<b>97,877</b>	<b>64,860</b>	<b>162,736</b>		<b>97,845</b>	<b>68,180</b>	<b>166,025</b>		<b>-1.98%</b>



# Domestic Activity



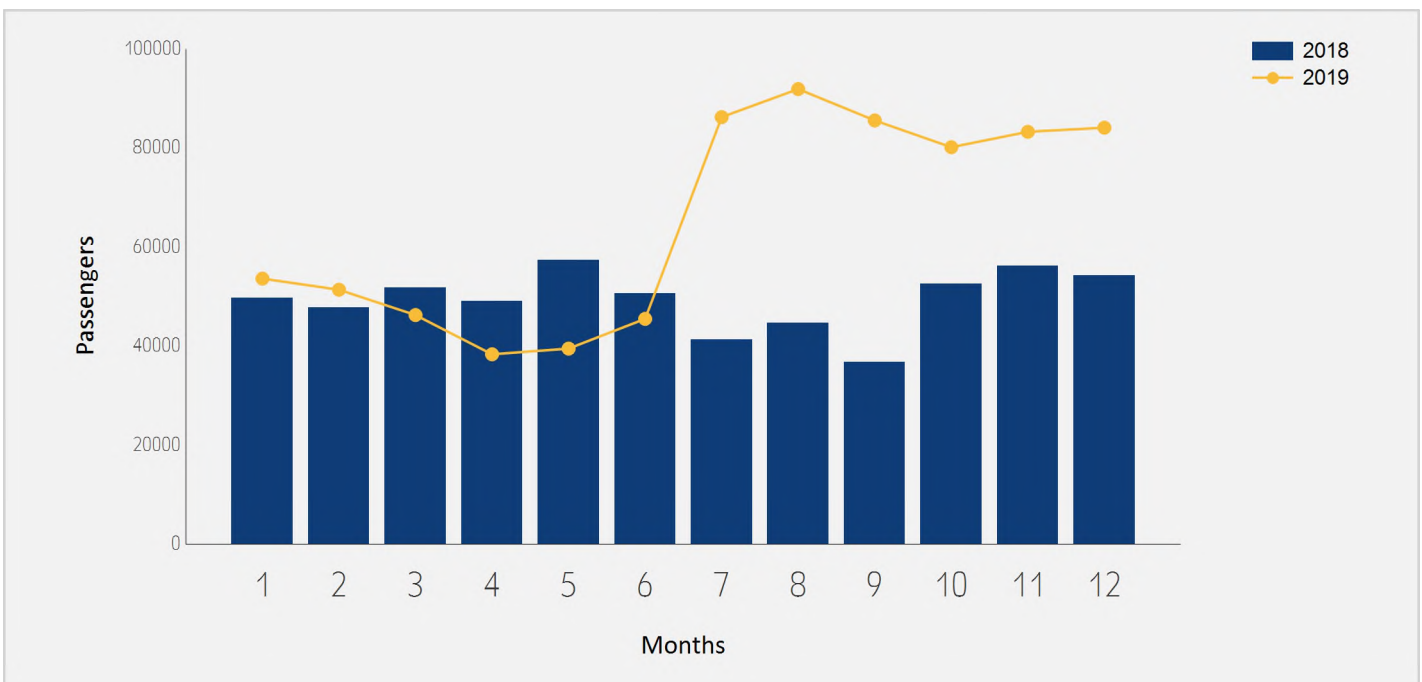




# Domestic Passenger Traffic

## Distribution by Months

Month	2019	2018	Rate of Change
January	53,612	49,632	8.01%
February	51,365	47,747	7.57%
March	46,249	51,742	-10.61%
April	38,319	49,042	-21.86%
May	39,474	57,377	-31.20%
June	45,482	50,645	-10.19%
July	86,240	41,318	108.72%
August	91,905	44,675	105.71%
September	85,565	36,776	132.66%
October	80,159	52,511	52.65%
November	83,269	56,192	48.18%
December	84,097	54,287	54.91%
<b>Total</b>	<b>785,736</b>	<b>591,944</b>	<b>32.73%</b>



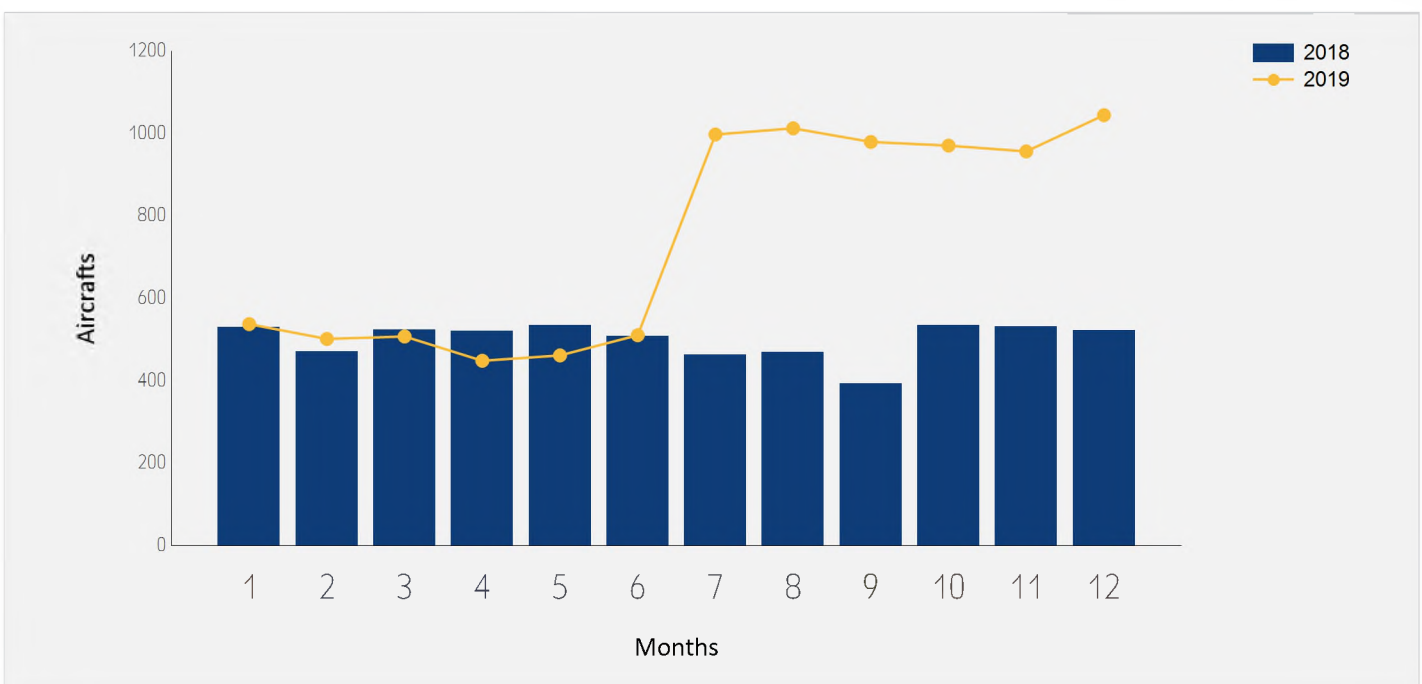




# Domestic Aircrafts Traffic

## Distribution by Months

Month	2019	2018	Rate of Change
January	537	530	1.32%
February	501	470	6.59%
March	507	524	-3.24%
April	448	520	-13.84%
May	461	534	-13.67%
June	510	508	0.39%
July	997	462	115.80%
August	1,012	469	115.77%
September	979	392	149.74%
October	970	534	81.64%
November	956	531	80.03%
December	1,044	521	100.38%
<b>Total</b>	<b>8,922</b>	<b>5,995</b>	<b>48.82%</b>





# Accumulated Domestic Passengers Traffic

## Distribution by Airlines

		Accumulated 2019		Accumulated 2018		
Airline		Passengers	Rate of Total	Passengers	Rate of Total	Rate of Change
IZ	ARKIA ISRAELI AIRLINES	567,201	72.18%	395,871	66.87%	43.27%
6H	ISR AIR AIRLINES	215,579	27.43%	192,650	32.54%	11.90%
LY	EL AL ISRAEL AIRLINES	1,664	0.21%	2,078	0.35%	-19.92%
	OTHERS	1,292	0.16%	1,345	0.22%	-3.94%
	<b>TOTAL</b>	<b>785,736</b>		<b>591,944</b>		<b>32.73%</b>

## Distribution by Destinations

		Accumulated 2019		Accumulated 2018		
Destination		Passengers	Rate of Total	Passengers	Rate of Total	Rate of Change
	RAMON / EILAT-J.HOZMAN	775,399	98.68%	577,359	97.53%	34.30%
	OTHERS	10,337	1.31%	14,585	2.46%	-29.12%
	<b>TOTAL</b>	<b>785,736</b>		<b>591,944</b>		<b>32.73%</b>

