

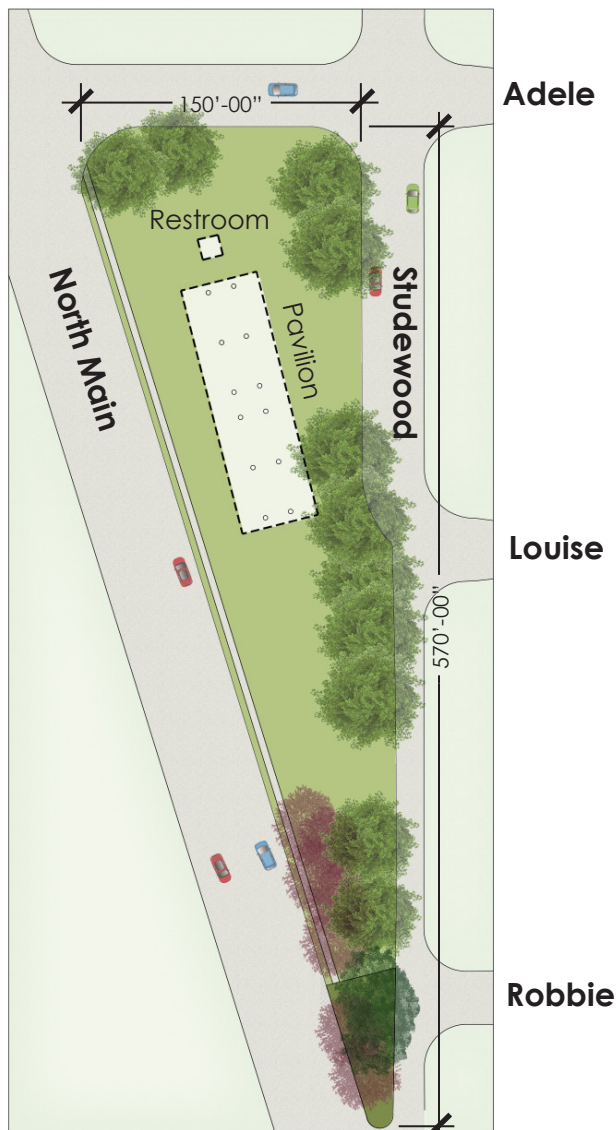
SUNSET HEIGHTS PARK (formerly known as the Heights Transit Center)

In early 2019, Houston Parks and Recreation Department acquired the former Heights Transit Center located at North Main, Adele, Calvacade, and Studewood. Houston Parks and Recreation Department has engaged Lauren Griffith Associates to create a Master Plan for the neighborhood park. The Master Plan will serve as a framework for future improvements to the park as funding becomes available and as support for grant applications and other funding proposals.

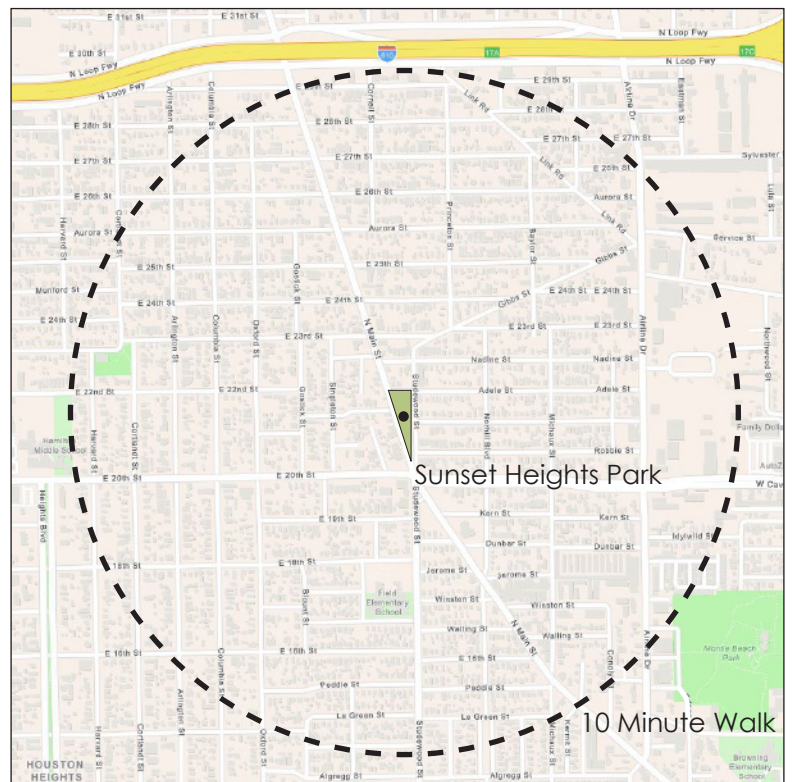
Please check out the examples of possible amenities and potential park activities on the next pages. Then share your vision for the park by taking this online survey:

<https://www.surveymonkey.com/r/QTM8C3Y>

Existing Site



Location



Lauren Griffith Associates

Examples of possible amenities and potential park activities

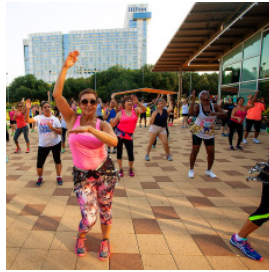
Classes (managed through a reservation/ permit process)



Yoga



Tai Chi



Zumba



Toddler Events

Neighborhood Events (managed through a reservation/ permit process)



Movies



Markets



Game Nights



Seasonal Events



Small Performances

Private Events (reserved or impromptu, if available)



Picnics



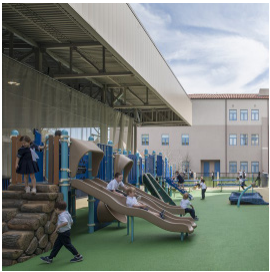
Family Gatherings



Celebrations

Examples of possible amenities and potential park activities

Children and Youth Play Spaces



Playground



Water Play



Open Space to Kick A Ball/ Play Catch



Tricycle/ Bicycle Track



Gaga Pit (gentler form of dodgeball)

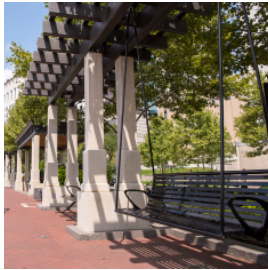
Intergenerational Fitness and Play Spaces



Fitness Equipment (moveable parts)



Walking Path



Porch Swings



Ping Pong

Community Gardens (managed through an adoption program)



Vegetable Garden

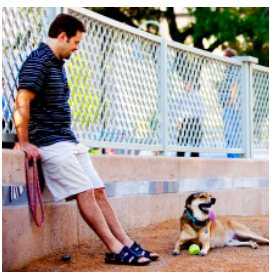


Flower Garden

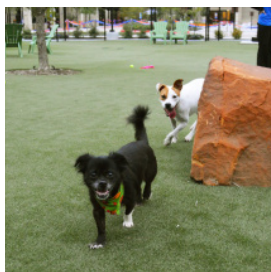


Pollinator Garden

Dog Parks



Large Dog Park



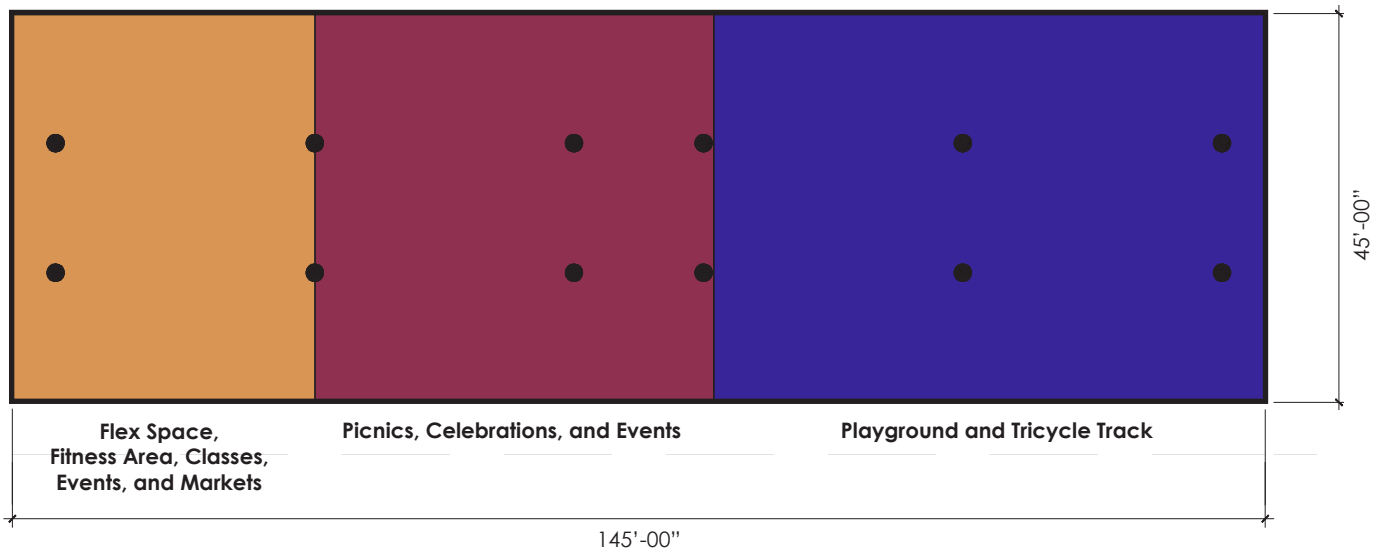
Small Dog Park

Examples of possible amenities and potential pavilion activities

Renovated Pavilion - Elevation



Renovated Pavilion - Plan



Renovated Pavilion - Example



Lauren Griffith Associates