



Statistical Yearbook of Helsinki

2018



2018

Statistical Yearbook of Helsinki

16th volume

City of Helsinki, Executive Office, Urban Research and Statistics

Address P.O. Box 550, FI-00099 City of Helsinki, Finland (Siltasaarekatu 18–20 A)

Telephone +358 9 310 1641

Publications can be ordered tel. + 358 9 310 36293
kaupunkitieto.tilaukset@hel.fi

Inquiries Ari Jaakola, tel. +358 9 310 43608, ari.jaakola@hel.fi
Solja Saarto, tel. +358 9 310 36378, solja.saarto@hel.fi

ISBN 978-952-331-564-8

Contents

| | |
|--|-----------|
| Preface..... | 6 |
| Explanation of symbols..... | 7 |
| Reader instructions..... | 7 |
| | |
| 1 Area and environment..... | 9 |
| 2 Population..... | 13 |
| 3 Housing..... | 25 |
| 4 Transport and tourism..... | 33 |
| 5 Health care..... | 37 |
| 6 Social welfare..... | 43 |
| 7 Education..... | 49 |
| 8 Culture and leisure..... | 53 |
| 9 Energy and water supply..... | 57 |
| 10 City finances and personnel..... | 61 |
| 11 Labour force..... | 65 |
| 12 Economic activities..... | 69 |
| 13 Income and consumption..... | 73 |
| 14 Justice and public safety..... | 77 |
| 15 Elections..... | 81 |

Preface

The Statistical Yearbook of Helsinki assembles in one volume a large quantity of statistics on various themes. Based on reliable data, its tables convey a varied picture of Helsinki and its residents. The situation in Helsinki is compared with other areas, namely the rest of the Helsinki Metropolitan Area, the Helsinki Region and Finland as a whole, and furthermore the book contains sections on the major city regions in Scandinavia, the capitals of the Baltic states and on St Petersburg in Russia. The various themes and their development are described in a total of 255 statistical tables.

The 2018 yearbook is the 106th annual edition. Over the years, revisions have been made several times, but the purpose of giving a varied description of the city and its residents remains the same. The figures in the present volume take into account the administration reform carried out in 2017 within Helsinki City's administration. With this reform, the office and department philosophy was abandoned, and offices and departments were merged into larger wholes referred to as Divisions. In this book, the reform influenced, above all, Chapter 10, where tables have been adapted so as to match the new organisational structure.

The Statistical Yearbook of Helsinki can also be studied online, (see www.hel.fi/kaupunkitieto). The 1905-2008 editions are available in a digital format on the City's archives database Sinetti, (www.sinettiarkisto.fi). Furthermore, the tables of the yearbook are available as open data on the Helsinki Region Infoshare web service, (www.hri.fi). The latter contains all the statistical tables published in the yearbook since 2002.

Additional data on many themes in the yearbook can be found in the statistical and research publications, and in the electronic data and databases of City of Helsinki Executive Office (www.hel.fi/urbanfacts). Statistics on Helsinki by district and sub-district are available in the Helsinki Region Small Area Database (www.alue-sarjat.fi). The publication Helsinki by District presents statistics in the form of maps, graphs and tables. This publication, too, is available on our website. The Library of Urban Research and Statistics also provides information services.

The yearbook is compiled by the Helsinki Executive Office's Urban Research and Statistics Unit. The editing has been led by Statistics and Information Services Manager **Ari Jaakola**, and the actual editorial work was carried out by Information Service Secretary **Solja Saarto**, who also made the graphs. The layout was made by Statistics Secretary **Sirkka Koski**. The cover was planned and made by Graphics Designer **Olli Turunen** of Tovia Design Oy Ltd. We want to thank all our numerous cooperation partners within and outside the city administration for their valuable help in providing data for the Statistical Yearbook.

Helsinki, November 2018

Ari Jaakola

Statistics and Information Services Manager

Explanation of symbols

Coefficients for monetary value

| 2016 currency rate | | 2017 currency rate | |
|--------------------|--------------------|--------------------|-------------|
| <i>Year</i> | <i>Coefficient</i> | <i>Coefficient</i> | <i>Year</i> |
| 1995 | 0,2315 | 1995 | 0,2332 |
| 2000 | 0,2144 | 2000 | 0,2160 |
| 2005 | 1,2003 | 2005 | 1,2093 |
| 2010 | 1,0923 | 2010 | 1,1006 |
| 2013 | 1,0119 | 2014 | 1,0091 |
| 2014 | 1,0015 | 2015 | 1,0111 |
| 2015 | 1,0036 | 2016 | 1,0076 |
| 2016 | 1,0000 | 2017 | 1,0000 |

Explanation of symbols

| | |
|---|-----|
| Magnitude nil | – |
| Magnitude less than half of unit employed | 0 |
| Data subject to secrecy | ... |
| Data not available | .. |
| Category not applicable | , |
| Preliminary data | * |
| Corrected figure | u |
| Men | M |
| Women | W |

A horizontal line drawn across a time series shows substantial breaks in the homogeneity of a series.

Reader instructions

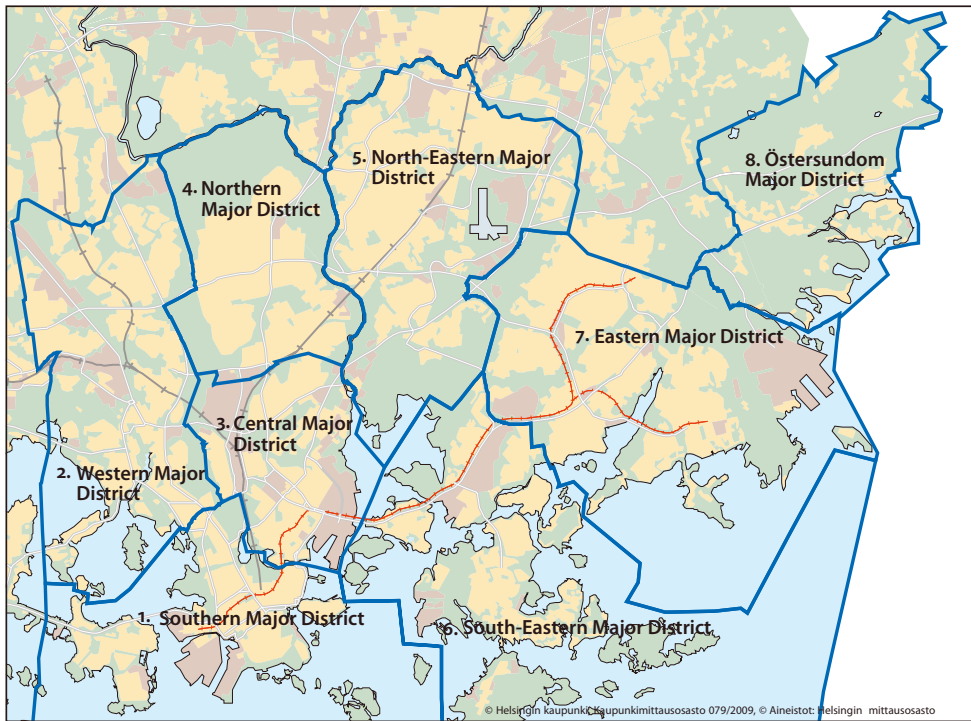
The book contains some data denominated in euros expressed in fixed monetary value for 2016 or 2017. This has been done in an attempt to eliminate the impacts of changes in monetary value on the figures. The cost of living index 1951:10 = 100 has been used as the **deflation coefficient**. The coefficients for different years are stated in conjunction with the symbols.

There is always a reference in conjunction with the euro-denominated data as to whether the figures have been stated in fixed monetary value for 2016 or 2017. Where no reference is stated, the euro-denominated data is in the current monetary value. Where figures are examined **in relation to the population figure**, the average population figure has been used as the population figure if the data apply to the whole year.

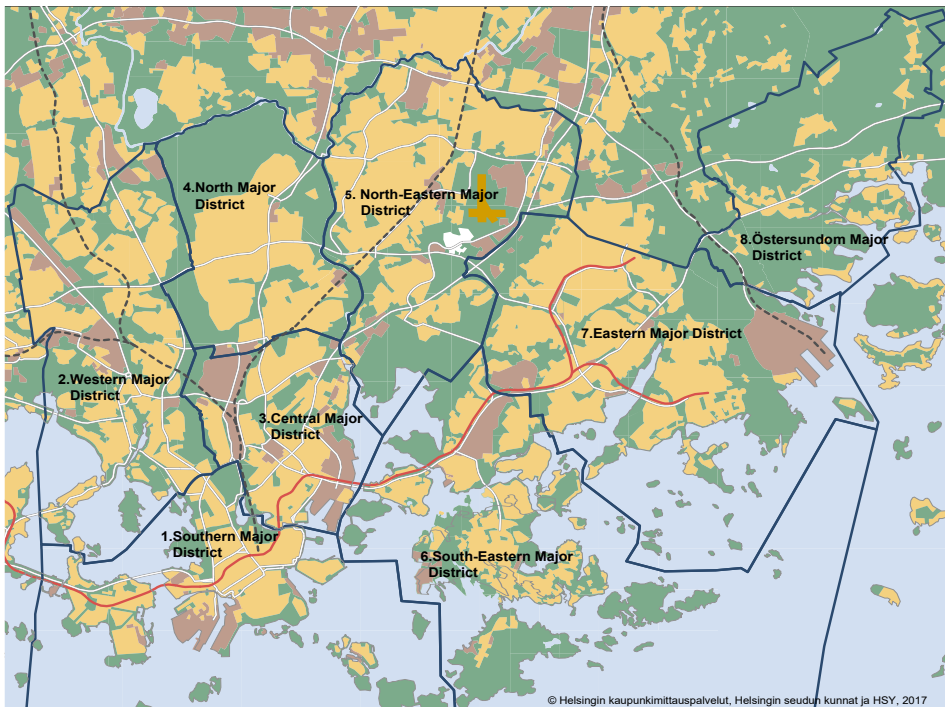
The year book presents **district data** in accordance with the **district division system** approved by the City Board. The district division system is at four levels with the city being divided into 8 major districts, which are subdivided into a total of 34 districts. These districts comprise sub-districts and small districts in the official district division. There are currently 148 sub-districts and 404 small areas. Each major district, district and sub-district has a code and name confirmed by the City Board and small areas have a code only. Major districts have a single-digit code from 1–8 and districts have a three-digit code, with the first digit designating the major district in which the district lies. The three-digit code of sub-districts is formed from the city area code (the two first digits) and the sub-district code (the last digit). A full list of the district names and codes in the district division system can be found with the district division map appendix.

The Helsinki Metropolitan Area comprises the cities of Helsinki, Espoo, Vantaa and Kauniainen. **The Helsinki Region** comprises these four cities and those of Hyvinkää, Järvenpää, Kerava, Kirkkonummi, Nurmijärvi, Sipoo, Tuusula, Vihti and, since 1 Jan. 2005, Mäntsälä and Pornainen.

Major districts in Helsinki



Land use 2017



Area and environment

List of diagrams and tables

| | | |
|-----|---|----|
| 1.1 | Area and population density by major district 2018..... | 10 |
| 1.2 | Air temperature and water-level 1995–2017 | 10 |
| 1.3 | Respirable particles (PM ₁₀), nitrogen dioxide and ozone in the air 2005–2017 | 11 |
| 1.4 | Green house gas emissions corresponding to consumption in Helsinki 1990–2016 | 11 |
| 1.5 | Water quality in certain sea areas in Helsinki..... | 12 |

| | Area, km ² | | Inhabitants per km ² land |
|-------------------------------------|-----------------------|----------------------------|--------------------------------------|
| | Total | of which land ¹ | |
| 1. Southern Major District | 152.7 | 18.1 | 6,433 |
| 2. Western Major District | 36.5 | 30.5 | 3,580 |
| 3. Central Major District | 17.7 | 15.8 | 5,867 |
| 4. Northern Major District | 23.2 | 23.2 | 1,859 |
| 5. North-Eastern Major District | 37.6 | 36.4 | 2,740 |
| 6. South-Eastern Major District | 362.4 | 25.2 | 2,037 |
| 7. Eastern Major District | 56.5 | 37.5 | 2,989 |
| 8. Östersundom Major District | 28.7 | 26.2 | 77 |
| Islands not included in these areas | 3.6 | 3.6 | |
| The whole city | 719.0 | 216.5 | 2,971 |
| Espoo | 528.0 | 330.2 | 845 |
| Vantaa | 240.4 | 238.4 | 936 |
| Kauniainen | 6.0 | 6.0 | 1,604 |
| Helsinki Region | 5,518.9 | 3,841.4 | 384 |

¹ Incl. lakes and streams.

Source: Helsinki Municipal Data System, City of Helsinki. Urban Environment Division and National Land Survey of Finland (NLS).

| | Air temperature ¹ | | | Water-level ² | | |
|-------------|------------------------------|-------------|------------|--------------------------|-----------|------------|
| | Mean °C | Max. | Min. | Mean cm | Max. | Min. |
| 1995 | 6.2 | 27.7 | -24.4 | 8 | 94 | -56 |
| 2000 | 7.2 | 26.3 | -18.0 | 6 | 85 | -51 |
| 2005 | 6.6 | 29.6 | -18.3 | 4 | 151 | -44 |
| 2010 | 5.0 | 30.1 | -22.6 | -10 | 64 | -93 |
| 2015 | 7.8 | 26.9 | -14.0 | 10 | 114 | -45 |
| 2017 | 6.6 | 24.2 | -21 | 8 | 42 | -26 |
| I | -1.9 | 6.1 | -21 | 21.6 | 52.8 | -39.3 |
| II | -2.0 | 7.4 | -13.5 | -17.5 | 33.7 | -46.7 |
| III | 1.2 | 12.0 | -7.3 | -1 | 32 | -60 |
| IV | 2.8 | 11.0 | -4.1 | 7 | 40 | -20 |
| V | 9.5 | 21.3 | -1.6 | -15 | 14 | -32 |
| VI | 13.7 | 24.2 | 3.5 | 7 | 39 | -20 |
| VII | 16.0 | 23.3 | 8.7 | 7 | 33 | -21 |
| VIII | 16.2 | 23.1 | 6.7 | 6 | 35 | -12 |
| IX | 12.1 | 17.9 | 4.7 | -2 | 29 | -30 |
| X | 5.8 | 14.6 | -2.2 | 11 | 50 | -34 |
| XI | 4.1 | 9.1 | -2.4 | 33 | 63 | 9 |
| XII | 1.8 | 6.0 | -5.1 | 40 | 80 | -5 |

¹ At Kaisaniemi monitoring station.

² At surface by a quay in the Kaivopuisto district. The measure is the theoretical average water level.

Source: Finnish Meteorological Institute.

| Air quality | Annual mean, µg/m ³ | | | |
|--|--------------------------------|------|------|------|
| | 2005 | 2010 | 2015 | 2017 |
| Respirable particles content, PM ₁₀ | | | | |
| Mannerheimintie 5 ¹ | 30 | 25 | 20 | 19 |
| Kallio | 15 | 15 | 12 | 11 |
| Leppävaara ² (in Espoo) | 23 | 15 | 20 | 14 |
| Tikkurila (in Vantaa) | 23 | 16 | 12 | 11 |
| Nitrogen dioxide content, NO ₂ | | | | |
| Mannerheimintie 5 ¹ | 43 | 41 | 32 | 27 |
| Kallio | 22 | 23 | 18 | 15 |
| Leppävaara ² (in Espoo) | 24 | 28 | 23 | 20 |
| Tikkurila (in Vantaa) | 30 | 30 | 21 | 18 |
| Ozone content, O ₃ | | | | |
| Mannerheimintie 5 ¹ | 37 | 39 | 41 | .. |
| Kallio | 48 | 48 | 50 | 49 |
| Tikkurila | 46 | 44 | .. | .. |

¹ Measuring started in 2005.

² Location of monitoring station changed in January 2005 and 2010.

Source: HSY Helsinki Region Environmental Services Authority: Ilmanlaatu pääkaupunkiseudulla.

| | Total emissions, 1.000 t CO ₂ equiv. | | | | | 1990–2016 change % |
|---------------------------------|---|---------|---------|---------|---------|-----------------------|
| | 1990 | 2000 | 2005 | 2010 | 2016 | |
| Total | 3,513.7 | 3,129.4 | 3,451.8 | 3,253.7 | 2,651.0 | -25 |
| District heating | 1,662.4 | 1,205.1 | 1,394.7 | 1,362.3 | 1,355.6 | -18 |
| Electrical heating | 78.0 | 95.5 | 116.5 | 111.3 | 64.0 | -18 |
| Individual property heating | 114.1 | 105.1 | 113.1 | 93.2 | 81.1 | -29 |
| Consumer electricity | 515.7 | 694.7 | 908.3 | 843.1 | 430.8 | -16 |
| Transportation | 685.6 | 710.3 | 737.8 | 718.8 | 600.2 | -12 |
| Industry and work machinery | 168.0 | 96.6 | 74.4 | 23.6 | 17.9 | -89 |
| Waste and waste water treatment | 288.0 | 220.7 | 105.6 | 100.1 | 100.5 | -65 |
| Agriculture | 1.9 | 1.5 | 1.4 | 1.3 | 1.0 | -50 |
| | Emissions per capita, tons of CO ₂ equiv./inhabitant | | | | | |
| | 1990 | 2000 | 2005 | 2010 | 2016 | 1990–2016 change % |
| Total | 7.1 | 5.6 | 6.2 | 5.5 | 4.2 | -42 |
| District heating | 3.4 | 2.2 | 2.5 | 2.3 | 2.1 | -37 |
| Electrical heating | 0.2 | 0.2 | 0.2 | 0.2 | 0.1 | -38 |
| Individual property heating | 0.2 | 0.2 | 0.2 | 0.2 | 0.1 | -43 |
| Consumer electricity | 1.1 | 1.3 | 1.6 | 1.4 | 0.7 | -35 |
| Transportation | 1.4 | 1.3 | 1.3 | 1.2 | 0.9 | -32 |
| Industry and work machinery | 0.3 | 0.2 | 0.1 | 0.04 | 0.03 | -91 |
| Waste and waste water treatment | 0.6 | 0.4 | 0.2 | 0.2 | 0.2 | -72 |
| Agriculture | 0.0 | 0.0 | 0.0 | 0.0 | 0.0 | . |

Source: City of Helsinki. Urban Environment Division.

1.5

Water quality in certain sea areas in Helsinki

Body of water

| | Ecological state | | | | Chemical state | | |
|--------------------------|------------------|--------------|--------------------------------------|-------------------|----------------|-----------------|-------------------------|
| | 1973-1976 | 2013-2017 | Materials and grounds for estimation | Reason for change | 2000-2007 | 2006-2012 | Chemical classification |
| Sipoo archipelago | Passable | Satisfactory | 2 | 1 | Good | Good | 1 |
| Villinki | Passable | Passable | 3 | | Good | Good | 1 |
| Kruunuvuorenselkä | Bad | Passable | 3 | 2 | Good | Worse than good | 2 |
| Seurasaari | Bad | Passable | 3 | 2 | Good | Good | 1 |
| Suvisaaristo-Lauttasaari | Passable | Satisfactory | 3 | 3 | Good | Good | 1 |
| Porvoo-Helsinki | Satisfactory | Satisfactory | 2 | | Good | Good | 1 |
| Helsinki-Porkkala | Satisfactory | Satisfactory | 2 | | Good | Good | 1 |

Ecological classification

Materials

| | |
|---|------------|
| 1 | Extensive |
| 2 | Extensive |
| 3 | Extensive |
| 4 | Restricted |
| 5 | Restricted |

Grounds for classification

Extensive phytoplankton chlorophyll a materials and intensive station biomass materials, growth depth of kelp in a sheltered and open coastal zone and benthic materials.

Extensive phytoplankton chlorophyll a materials (passable) and quite extensive benthic materials (satisfactory).

Phytoplankton chlorophyll a materials and benthic results.

Phytoplankton chlorophyll materials and benthic results.

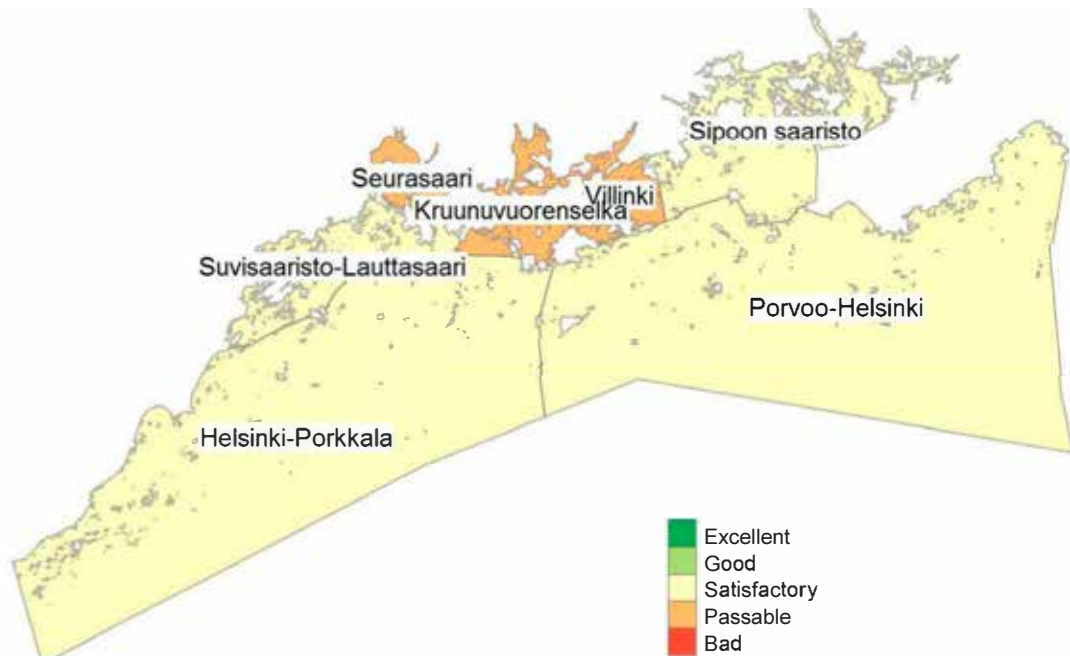
Very restricted materials, water quality results from one station in 2011 and benthic information from two stations in 2011.

Reason for change

- 1 The state of both biological and physico-chemical factors has deteriorated. Sea-bottom de-oxygenation and, in summer, algal bloom occur in the area.
- 2 With decreasing external loads, the bottom fauna in the area has recovered, which has improved the ecological quality rating. Waternutrient concentrations, too, have decreased.
- 3 The bottom fauna has recovered and become more diversified, which has improved the ecological quality rating.

Chemical classification

- 1 Evaluation of chemical state made as expert evaluations when lacking suitable materials.
- 2 Classification based on measurements, restricted materials.



Source: Urban Environment Division.

List of diagrams and tables

| | | |
|------|---|----|
| | Population by mother tongue and age 1.1.2018 | 23 |
| 2.1 | Helsinki's population 1875–2018 | 14 |
| 2.2 | Population by age and sex 1980–2018 | 15 |
| 2.3 | Population on 1 Jan. 1990–2018 and a projection for 1 Jan. 2028 by district and sub district | 16 |
| 2.4 | Population by citizenship on 1 Jan. 2005–2018 | 17 |
| 2.5 | Persons having received a Finnish citizenship by mother tongue 2000–2017 | 18 |
| 2.6 | Population by religious affiliation on 1 Jan. 2000–2018 | 18 |
| 2.7 | Families in Helsinki by type and age of children 1990–2018..... | 19 |
| 2.8 | Population changes by district 2017 | 20 |
| 2.9 | Births in Helsinki in 1901–2017 | 21 |
| 2.10 | Deaths in Helsinki in 1901–2017 | 22 |
| 2.11 | Life expectancy (average expectation of remaining lifetime) 1981–2017..... | 22 |
| 2.12 | Direction of migration 1981–2016..... | 23 |

| | Total | Change ² Number | % | Men | Women | Women per 1 000 men |
|------|---------|-------------------------------|------|---------|---------|---------------------|
| 1875 | 23,070 | 1,313 | 6.0 | 10,236 | 12,834 | 1,254 |
| 1880 | 36,346 | 13,276 | 57.5 | 16,403 | 19,943 | 1,216 |
| 1885 | 41,579 | 5,233 | 14.4 | 18,746 | 22,833 | 1,218 |
| 1890 | 56,236 | 14,657 | 35.3 | 25,519 | 30,717 | 1,204 |
| 1895 | 64,554 | 8,318 | 14.8 | 28,213 | 36,341 | 1,288 |
| 1900 | 79,126 | 14,572 | 22.6 | 35,010 | 44,116 | 1,260 |
| 1905 | 93,626 | 14,500 | 18.3 | 41,198 | 52,428 | 1,273 |
| 1910 | 118,736 | 25,110 | 26.8 | 52,179 | 66,557 | 1,276 |
| 1915 | 153,467 | 34,731 | 29.3 | 69,102 | 84,365 | 1,221 |
| 1920 | 152,200 | -1 267 | -0.8 | 64,434 | 87,766 | 1,362 |
| 1925 | 162,070 | 9,870 | 6.5 | 67,545 | 94,525 | 1,399 |
| 1930 | 205,833 | 43,763 | 27.0 | 87,022 | 118,811 | 1,365 |
| 1935 | 225,482 | 19,649 | 9.5 | 94,146 | 131,336 | 1,395 |
| 1940 | 252,484 | 27,002 | 12.0 | 105,777 | 146,707 | 1,387 |
| 1945 | 276,277 | 23,793 | 9.4 | 113,710 | 162,567 | 1,430 |
| 1950 | 368,519 | 92,242 | 33.4 | 157,080 | 211,439 | 1,346 |
| 1955 | 403,970 | 35,451 | 9.6 | 174,553 | 229,417 | 1,314 |
| 1960 | 448,315 | 44,345 | 11.0 | 196,689 | 251,626 | 1,279 |
| 1965 | 494,796 | 7,374 | 1.5 | 219,975 | 274,821 | 1,249 |
| 1970 | 523,677 | -1,951 | -0.4 | 233,373 | 290,304 | 1,244 |
| 1975 | 502,961 | -7,244 | -1.4 | 223,252 | 279,709 | 1,253 |
| 1980 | 483,675 | -1,728 | -0.4 | 215,061 | 268,614 | 1,249 |
| 1985 | 484,122 | -269 | -0.1 | 216,411 | 267,711 | 1,237 |
| 1990 | 490,691 | 709 | 0.1 | 221,078 | 269,613 | 1,220 |
| 1991 | 492,487 | 1,796 | 0.4 | 222,625 | 269,862 | 1,212 |
| 1992 | 497,542 | 5,055 | 1.0 | 225,636 | 271,906 | 1,205 |
| 1993 | 501,518 | 3,976 | 0.8 | 228,307 | 273,211 | 1,197 |
| 1994 | 508,659 | 7,141 | 1.4 | 232,211 | 276,448 | 1,191 |
| 1995 | 515,765 | 7,106 | 1.4 | 235,787 | 279,978 | 1,187 |
| 1996 | 525,031 | 9,266 | 1.8 | 240,638 | 284,393 | 1,182 |
| 1997 | 532,053 | 7,022 | 1.3 | 244,621 | 287,432 | 1,175 |
| 1998 | 539,363 | 7,310 | 1.4 | 248,395 | 290,968 | 1,171 |
| 1999 | 546,317 | 6,954 | 1.3 | 252,366 | 293,951 | 1,165 |
| 2000 | 551,123 | 4,806 | 0.9 | 254,967 | 296,156 | 1,162 |
| 2001 | 555,474 | 4,351 | 0.8 | 257,399 | 298,075 | 1,158 |
| 2002 | 559,718 | 4,244 | 0.8 | 260,070 | 299,648 | 1,152 |
| 2003 | 559,716 | -2 | 0.0 | 260,236 | 299,480 | 1,151 |
| 2004 | 559,330 | -386 | -0.1 | 260,441 | 298,889 | 1,148 |
| 2005 | 559,046 | -284 | -0.1 | 260,573 | 298,473 | 1,145 |
| 2006 | 560,905 | 1,859 | 0.3 | 261,627 | 299,278 | 1,144 |
| 2007 | 564,521 | 3,616 | 0.6 | 263,343 | 301,178 | 1,144 |
| 2008 | 568,531 | 4,010 | 0.7 | 265,728 | 302,803 | 1,140 |
| 2009 | 576,632 | 8,101 | 1.4 | 270,176 | 306,456 | 1,134 |
| 2010 | 583,350 | 6,718 | 1.2 | 273,577 | 309,773 | 1,132 |
| 2011 | 588,549 | 5,199 | 0.9 | 276,361 | 312,188 | 1,130 |
| 2012 | 595,384 | 6,835 | 1.2 | 280,064 | 315,320 | 1,126 |
| 2013 | 603,968 | 8,584 | 1.4 | 284,562 | 319,406 | 1,122 |
| 2014 | 612,664 | 8,696 | 1.4 | 288,957 | 323,707 | 1,120 |
| 2015 | 620,715 | 8,051 | 1.3 | 293,113 | 327,602 | 1,118 |
| 2016 | 628,208 | 7,493 | 1.2 | 297,151 | 331,057 | 1,141 |
| 2017 | 635,181 | 6,973 | 1.1 | 301,010 | 334,171 | 1,110 |
| 2018 | 643,272 | 8,091 | 1.3 | 305,237 | 338,035 | 1,10. |

¹ Figures include foreign nationals from 1951 on (and for the year 1915, when Russian subjects were included).

² Up until 1960 the change over the previous 5 years, after 1960 the change during the previous year.

Source: Census lists 1875–1989 and since 1990 Population Register Centre.

| | 1980 | 1990 | 2000 | 2005 | 2010 | 2015 | 2018 |
|-----------------------------|----------------|----------------|----------------|----------------|----------------|----------------|----------------|
| The whole population | | | | | | | |
| Total | 483,743 | 490,629 | 551,123 | 559,046 | 583,350 | 620,715 | 643,272 |
| 0–6 year olds | 35,938 | 36,683 | 41,253 | 37,199 | 39,170 | 44,552 | 46,033 |
| 7–15 | 47,816 | 41,409 | 47,661 | 49,545 | 45,678 | 46,450 | 50,683 |
| 16–17 | 11,699 | 8,154 | 10,549 | 10,666 | 11,742 | 10,641 | 10,633 |
| 18–29 | 97,916 | 97,340 | 103,567 | 108,291 | 115,373 | 120,699 | 121,473 |
| 30–44 | 116,279 | 127,343 | 135,979 | 129,838 | 131,459 | 143,098 | 153,670 |
| 45–64 | 106,517 | 109,151 | 138,078 | 146,508 | 155,137 | 153,566 | 152,412 |
| 65–74 | 43,795 | 38,130 | 39,406 | 40,509 | 45,478 | 58,976 | 63,132 |
| 75–84 | 19,925 | 26,296 | 25,305 | 26,931 | 28,134 | 30,186 | 31,692 |
| 85–89 | 2,890 | 4,478 | 6,399 | 6,199 | 7,455 | 8,108 | 8,687 |
| 90–94 | 825 | 1,391 | 2,471 | 2,703 | 2,886 | 3,489 | 3,801 |
| 95– | 143 | 254 | 455 | 657 | 838 | 950 | 1,056 |
| % | | | | | | | |
| Total | 100 | 100 | 100 | 100 | 100 | 100 | 100 |
| 0–6 year olds | 7.4 | 7.5 | 7.5 | 6.7 | 6.7 | 7.2 | 7.2 |
| 7–15 | 9.9 | 8.4 | 8.6 | 8.9 | 7.8 | 7.5 | 7.9 |
| 16–17 | 2.4 | 1.7 | 1.9 | 1.9 | 2.0 | 1.7 | 1.7 |
| 18–29 | 20.2 | 19.8 | 18.8 | 19.4 | 19.8 | 19.4 | 18.9 |
| 30–44 | 24.0 | 26.0 | 24.7 | 23.2 | 22.5 | 23.1 | 23.6 |
| 45–64 | 22.0 | 22.2 | 25.1 | 26.2 | 26.6 | 24.7 | 23.7 |
| 65–74 | 9.1 | 7.8 | 7.2 | 7.2 | 7.8 | 9.5 | 9.8 |
| 75–84 | 4.1 | 5.4 | 4.6 | 4.8 | 4.8 | 4.9 | 4.9 |
| 85–89 | 0.6 | 0.9 | 1.2 | 1.1 | 1.3 | 1.3 | 1.4 |
| 90–94 | 0.2 | 0.3 | 0.4 | 0.5 | 0.5 | 0.6 | 0.6 |
| 95– | 0.0 | 0.1 | 0.1 | 0.1 | 0.1 | 0.2 | 0.2 |
| Percentage of men | | | | | | | |
| Total | 44.5 | 45.1 | 46.3 | 46.6 | 46.9 | 47.2 | 47.5 |
| 0–6 year olds | 51.3 | 50.9 | 51.0 | 51.1 | 50.8 | 51.2 | 51.5 |
| 7–15 | 50.7 | 51.0 | 51.0 | 51.0 | 51.0 | 50.9 | 51.0 |
| 16–17 | 50.2 | 51.2 | 50.2 | 49.7 | 50.5 | 49.6 | 49.9 |
| 18–29 | 46.5 | 47.1 | 47.5 | 47.4 | 46.9 | 46.7 | 46.6 |
| 30–44 | 47.8 | 47.7 | 49.5 | 50.0 | 50.7 | 51.0 | 51.1 |
| 45–64 | 42.9 | 45.5 | 45.7 | 46.2 | 46.6 | 47.3 | 47.8 |
| 65–74 | 32.6 | 33.9 | 39.8 | 41.1 | 42.0 | 42.6 | 42.7 |
| 75–84 | 24.3 | 25.9 | 28.5 | 31.8 | 34.9 | 36.9 | 37.6 |
| 85–89 | 16.4 | 18.7 | 20.6 | 21.6 | 24.7 | 28.3 | 29.9 |
| 90–94 | 14.2 | 15.5 | 17.8 | 16.8 | 18.4 | 20.7 | 22.9 |
| 95– | 12.6 | 9.8 | 13.2 | 14.8 | 13.7 | 14.3 | 15.0 |

Source: Statistics Finland.

| | 1990 | 2000 | 2010 | 2015 | 2018 | 2028* |
|--|----------------|----------------|----------------|----------------|----------------|----------------|
| The whole city | 490,872 | 551,123 | 583,350 | 620,715 | 643,272 | 718,973 |
| % | 100 | 100 | 100 | 100 | 100 | 100 |
| 1. Southern Major District | 90,307 | 97,015 | 99,683 | 108,210 | 116,443 | 130,565 |
| % | 18.4 | 17.6 | 17.1 | 17.4 | 18.1 | 18.2 |
| 101 Vironniemi district | 12,424 | 11,772 | 11,671 | 12,269 | 12,629 | 12,838 |
| 102 Ullanlinna district | 22,308 | 22,668 | 23,050 | 24,045 | 24,508 | 26,109 |
| 103 Kampinmalmi district | 22,508 | 29,796 | 30,394 | 34,625 | 39,617 | 48,991 |
| 104 Taka-Töölö district | 14,090 | 14,432 | 14,502 | 14,965 | 15,492 | 16,885 |
| 105 Lauttasaari district | 18,977 | 18,347 | 20,066 | 22,306 | 24,197 | 25,743 |
| 2. Western Major District | 89,480 | 100,639 | 101,328 | 106,287 | 109,306 | 120,505 |
| % | 18.2 | 18.3 | 17.4 | 17.1 | 17.0 | 16.8 |
| 201 Reijola district | 9,533 | 15,775 | 15,702 | 17,208 | 17,401 | 18,060 |
| 202 Munkkiniemi district | 15,637 | 17,369 | 17,328 | 17,624 | 17,982 | 19 265 |
| 203 Haaga district | 26,401 | 26,468 | 25,908 | 26,539 | 27,606 | 28,362 |
| 204 Pitäjänmäki district | 12,571 | 14,948 | 15,465 | 17,696 | 18,122 | 19,310 |
| 205 Kaarela district | 25,338 | 26,079 | 26,925 | 27,220 | 28,195 | 35,508 |
| 3. Central Major District | 73,129 | 73,252 | 78,561 | 88 651 | 92,618 | 112,764 |
| % | 14.9 | 13.3 | 13.5 | 14.3 | 14.4 | 15.7 |
| 301 Kallio district | 24,700 | 25,255 | 25,606 | 28,334 | 29,373 | 40,861 |
| 302 Alppiharju district | 12,452 | 11,875 | 11,731 | 11,727 | 12,177 | 11,842 |
| 303 Vallila district | 10,010 | 11,091 | 12,306 | 15,123 | 16 532 | 17,180 |
| 304 Pasila district | 9,669 | 8,591 | 8,484 | 9,182 | 9,377 | 14,214 |
| 305 Vanhakaupunki district | 16,298 | 16,440 | 20,434 | 24,285 | 25,159 | 28,667 |
| 4. Northern Major District | 40,397 | 41,250 | 41,164 | 42,218 | 43,112 | 50,806 |
| % | 8.2 | 7.5 | 7.1 | 6.8 | 6.7 | 7.1 |
| 401 Maunula district | 9,860 | 8,984 | 8,584 | 8,777 | 9,086 | 14,487 |
| 402 Länsi-Pakila district | 6,402 | 6,403 | 6,587 | 6,945 | 7,033 | 7,018 |
| 403 Tuomarinkylä district | 7,088 | 8,181 | 8,585 | 8,649 | 8,699 | 8,411 |
| 404 Oulunkylä district | 13,573 | 14,145 | 13,634 | 14,118 | 14,597 | 17,283 |
| 405 Itä-Pakila district | 3,474 | 3,537 | 3,774 | 3,729 | 3,697 | 3,607 |
| 5. North-Eastern Major District | 76,977 | 83,842 | 92,690 | 97,543 | 99,765 | 105,456 |
| % | 15.7 | 15.2 | 15.9 | 15.7 | 15.5 | 14.7 |
| 501 Latokartano district | 12,449 | 12,557 | 21,149 | 24,418 | 25,043 | 26,468 |
| 502 Pukinmäki district | 8,061 | 9,176 | 8,292 | 8,260 | 8,371 | 8,422 |
| 503 Malmi district | 22,547 | 26,023 | 27,947 | 28,986 | 29,087 | 33,119 |
| 504 Suutarila district | 11,041 | 11,844 | 11,304 | 11,284 | 11,362 | 11,200 |
| 505 Puistola district | 16,335 | 18,346 | 18,372 | 19,312 | 20,255 | 20,418 |
| 506 Jakomäki district | 6,544 | 5,896 | 5,626 | 5,283 | 5,647 | 5,829 |
| 6. South-Eastern Major District | 37,065 | 44,918 | 46,666 | 48,971 | 51,407 | 64,797 |
| % | 7.6 | 8.2 | 8.0 | 7.9 | 8.0 | 9.0 |
| 601 Kulosaari district | 3,699 | 3,761 | 3,770 | 3,853 | 3,965 | 4,084 |
| 602 Herttoniemi district | 18,483 | 24,574 | 26,423 | 28,126 | 28,566 | 31,448 |
| 603 Laajasalo district | 14,883 | 16,583 | 16,473 | 16,992 | 18 876 | 29,265 |
| 7. Eastern Major District | 75,478 | 90,355 | 103,227 | 107,957 | 112,012 | 118,254 |
| % | 15.4 | 16.4 | 17.7 | 17.4 | 17.4 | 16.4 |
| 701 Vartiokylä district | 19,793 | 20,235 | 21,363 | 22,098 | 22,423 | 21,391 |
| 702 Myllypuro district | 10,108 | 8,941 | 9,613 | 11,385 | 12,164 | 13,528 |
| 703 Mellunkylä district | 31,764 | 35,932 | 36,425 | 37,363 | 38,771 | 41,406 |
| 704 Vuosaari district | 13,813 | 25,247 | 35,826 | 37,111 | 38,654 | 41,928 |
| 8. Östersundom Major District | | | 2,113 | 2,063 | 2,007 | 2,392 |
| % | . | . | 0.4 | 0.3 | 0.3 | 0.3 |
| 801 Östersundom district | . | . | 2,113 | 2,063 | 2 007 | 2 392 |
| Others | 8,039 | 19,852 | 17,918 | 18,815 | 16,602 | 13,434 |
| % | 1.6 | 3.6 | 3.1 | 3.0 | 2.6 | 1.9 |
| Inner Helsinki | 154,029 | 167,721 | 173,899 | 191,783 | 202,280 | 235,660 |
| Outer Helsinki | 328,804 | 363,550 | 391,533 | 410,117 | 424,390 | 469,880 |

Helsinki's district division changed from 2013 on.

Source: Census lists (1980), Helsinki City's population register (1990), Statistics Finland (2000–2017) and City of Helsinki (2027).

| | 2005 | 2010 | 2015 | 2016 | 2018 |
|---|----------------|----------------|----------------|----------------|----------------|
| All Helsinki residents | 559,046 | 583,350 | 620,715 | 628,208 | 643,272 |
| Citizenship | | | | | |
| Finnish | 529,860 | 541,615 | 565,270 | 570,601 | 582,303 |
| Other | 29,186 | 41,735 | 55,445 | 57,607 | 60,969 |
| Percentage of the entire population | 5.2 | 7.2 | 8.9 | 9.2 | 9.5 |
| Europe | 16,911 | 23,186 | 31,135 | 31,902 | 31,619 |
| EU countries | 9,754 | 15,377 | 23,107 | 23,680 | 23,672 |
| Estonia | 4,583 | 7,482 | 12,568 | 12,834 | 12,324 |
| Sweden | 1,210 | 1,268 | 1,268 | 1,260 | 1,158 |
| EU member state since the 2000s (other than Estonia) | 958 | 1,569 | 2,463 | 2,540 | 2,833 |
| Other northern or western European | 292 | 351 | 368 | 387 | 384 |
| Other European | 6,865 | 7,458 | 7,660 | 7,835 | 7,563 |
| Russia | 5,227 | 5,918 | 6,161 | 6,252 | 5,876 |
| Africa | 4,348 | 5,860 | 6,982 | 7,142 | 7,238 |
| North America | 920 | 1,087 | 1,316 | 1,388 | 1,557 |
| Latin America or Caribbean | 539 | 923 | 1,182 | 1,233 | 1,360 |
| Southeast or East Asia | 2,363 | 4,055 | 5,719 | 6,198 | 7,033 |
| South, West or Central Asia | 3,487 | 5,913 | 8,254 | 8,870 | 11,222 |
| Australia or Oceania | 179 | 242 | 274 | 282 | 285 |
| No citizenship or citizenship unknown | 439 | 469 | 583 | 592 | 655 |

Source: Statistics Finland.

2.5

Persons having received a Finnish citizenship by mother tongue
2000–2017

| | 2000 | 2005 | 2010 | 2013 | 2014 | 2015 | 2017 |
|----------------|------|-------|------|-------|-------|-------|-------|
| Total | 839 | 1,464 | 884 | 2,118 | 1,946 | 1,931 | 3,057 |
| Mother tongue | | | | | | | |
| Finnish | 118 | 103 | 33 | 63 | 56 | 49 | 63 |
| Swedish | 7 | 13 | 6 | 8 | 11 | 6 | 27 |
| Russian | 178 | 526 | 316 | 484 | 514 | 419 | 639 |
| Somali | 173 | 220 | 67 | 378 | 336 | 364 | 431 |
| Arabic | 38 | 63 | 52 | 136 | 130 | 122 | 251 |
| Kurdish | 36 | 72 | 42 | 98 | 82 | 126 | 137 |
| English | 16 | 45 | 22 | 45 | 69 | 68 | 159 |
| Estonian | 63 | 47 | 35 | 89 | 63 | 60 | 94 |
| Persian, Farsi | 15 | 9 | 31 | 133 | 80 | 74 | 131 |
| Bengali | 15 | 14 | 7 | 39 | 56 | 33 | 69 |
| Turkish | 28 | 28 | 23 | 40 | 27 | 25 | 48 |
| Spanish | 16 | 16 | 17 | 35 | 37 | 37 | 65 |
| Vietnamese | 18 | 18 | 20 | 28 | 17 | 22 | 52 |
| Nepali | .. | 9 | 7 | 29 | 26 | 47 | 76 |
| Chinese | 30 | 19 | 16 | 29 | 27 | 36 | 47 |
| French | 6 | 10 | 12 | 32 | 19 | 28 | 51 |
| Other language | 82 | 252 | 178 | 452 | 396 | 415 | 717 |

Source: Statistics Finland.

2.6

Population by religious affiliation on 1 Jan, 2000–2018

| | 2000 | 2005 | 2010 | 2015 | 2018 |
|---|----------------|----------------|----------------|----------------|----------------|
| Total | 551,123 | 559,046 | 583,350 | 620,715 | 643,272 |
| Evangelical Lutheran Church of Finland | 400,229 | 391,747 | 375,291 | 353,335 | 344,553 |
| Other Lutherans | 695 | 623 | 92 | 123 | 108 |
| Finnish Orthodox Church | 8,343 | 9,008 | 9,388 | 9,458 | 9,359 |
| Other Greek Orthodox | 605 | 880 | 1,173 | 1,576 | 1,854 |
| Jehovah's witnesses | 1,475 | 1,558 | 1,667 | 1,686 | 1,623 |
| Lutheran free churches of Finland | 896 | 862 | 901 | 990 | 995 |
| Roman Catholic Church in Finland | 2,556 | 2,813 | 3,228 | 3,867 | 4,115 |
| Pentecostal Church of Finland | .. | .. | 645 | 842 | .. |
| Adventist churches | 269 | 267 | 241 | 221 | 210 |
| Church of Jesus Christ of Latter-day Saints | 396 | 409 | 420 | 478 | 485 |
| Baptist congregations | 109 | 143 | 103 | 84 | 80 |
| Methodist churches | 235 | 204 | 200 | 193 | 189 |
| Jewish congregations | 680 | 674 | 665 | 609 | 585 |
| Islamic congregations | 515 | 1,236 | 3,495 | 4,776 | 6,033 |
| Other | 156 | 351 | 311 | 573 | 1,968 |
| No religious affiliation | 133,964 | 148,271 | 185,530 | 241,904 | 271,115 |

Source: Statistics Finland.

| | All,families | Children in these | Married couples without children ² | Unmarried couples without children | Married couples with children ² | Unmarried couples with children | Mother and children | Father and children |
|---|--------------|-------------------|---|------------------------------------|--|---------------------------------|---------------------|---------------------|
| Families total³ | | | | | | | | |
| 1990 | 126,659 | 111,848 | 36,435 | 19,062 | 45,153 | 5,948 | 17,805 | 2,256 |
| 1995 | 129,765 | 114,556 | 37,968 | 20,318 | 42,644 | 7,065 | 19,447 | 2,323 |
| 2000 | 135,387 | 118,937 | 39,223 | 23,697 | 40,319 | 8,977 | 20,622 | 2,549 |
| 2005 | 137,641 | 116,028 | 41,693 | 26,042 | 37,221 | 9,383 | 20,617 | 2,685 |
| 2010 | 143,281 | 116,254 | 44,279 | 28,785 | 37,224 | 9,977 | 20,265 | 2,751 |
| 2011 | 144,528 | 117,321 | 44,678 | 28,989 | 37,561 | 10,083 | 20,370 | 2,847 |
| 2012 | 146,113 | 118,343 | 44,913 | 29,709 | 37,901 | 10,335 | 20,384 | 2,871 |
| 2013 | 148,303 | 119,745 | 45,450 | 30,348 | 38,391 | 10,559 | 20,597 | 2,958 |
| 2014 | 150,602 | 121,664 | 45,731 | 31,304 | 38,925 | 10,887 | 20,726 | 3,029 |
| 2015 | 152,650 | 123,782 | 45,257 | 31,968 | 39,487 | 11,194 | 20,841 | 3,067 |
| 2016 | 154,753 | 125,858 | 46,094 | 32,732 | 40,214 | 11,503 | 21,030 | 3,180 |
| 2017 | 156,620 | 127,469 | 46,313 | 33,496 | 40,497 | 11,776 | 21,338 | 3,200 |
| 2018 | 158,063 | 129,541 | 46,759 | 33,506 | 40,934 | 11,930 | 21,662 | 3,272 |
| Families with at least one 0–17 year old child | | | | | | | | |
| 1990 | 53,128 | 84,969 | . | . | 35,797 | 5,307 | 10,939 | 1,085 |
| 1995 | 56,336 | 91,651 | . | . | 35,063 | 6,526 | 13,477 | 1,270 |
| 2000 | 57,282 | 95,636 | . | . | 32,775 | 8,356 | 14,730 | 1,421 |
| 2005 | 55,540 | 93,702 | . | . | 30,342 | 8,699 | 14,983 | 1,516 |
| 2010 | 55,686 | 92,747 | . | . | 30,504 | 9,117 | 14,533 | 1,532 |
| 2011 | 55,973 | 93,097 | . | . | 30,707 | 9,205 | 14,512 | 1,549 |
| 2012 | 56,410 | 93,761 | . | . | 30,989 | 9,364 | 14,510 | 1,547 |
| 2013 | 57,055 | 94,823 | . | . | 31,371 | 9,527 | 14,560 | 1,597 |
| 2014 | 57,806 | 96,394 | . | . | 31,812 | 9,815 | 14,791 | 1,582 |
| 2015 | 58,776 | 98,201 | . | . | 32,240 | 10,071 | 14,706 | 1,620 |
| 2016 | 59,877 | 100,148 | . | . | 32,990 | 10,299 | 14,873 | 1,715 |
| 2017 | 60,821 | 101,972 | . | . | 33,351 | 10,541 | 15,174 | 1,755 |
| 2018 | 61,819 | 104,080 | . | . | 33,836 | 10,714 | 15,458 | 1,811 |
| Families with at least one 0–6 year old child | | | | | | | | |
| 1990 | 27,150 | 36,258 | . | . | 18,839 | 3,590 | 4,500 | 221 |
| 1995 | 29,784 | 41,149 | . | . | 18,646 | 4,751 | 6,106 | 281 |
| 2000 | 29,316 | 40,113 | . | . | 16,998 | 5,902 | 6,131 | 285 |
| 2005 | 26,807 | 36,281 | . | . | 15,505 | 5,496 | 5,505 | 301 |
| 2010 | 28,005 | 38,275 | . | . | 16,464 | 5,738 | 5,516 | 287 |
| 2011 | 28,588 | 39,190 | . | . | 16,870 | 5,853 | 5,579 | 286 |
| 2012 | 29,356 | 40,238 | . | . | 17,280 | 6,122 | 5,652 | 302 |
| 2013 | 30,139 | 41,349 | . | . | 17,663 | 6,295 | 5,857 | 324 |
| 2014 | 30,981 | 42,547 | . | . | 18,131 | 6,559 | 5,965 | 326 |
| 2015 | 31,849 | 43,689 | . | . | 18,513 | 6,830 | 6,074 | 334 |
| 2016 | 32,604 | 44,566 | . | . | 18,998 | 7,072 | 6,165 | 369 |
| 2017 | 33,033 | 45,069 | . | . | 19,151 | 7,237 | 6,268 | 377 |
| 2018 | 33,368 | 45,296 | . | . | 19,233 | 7,381 | 6,382 | 372 |

¹ At year-end 1990 and at turn of the year 1994/1995–2017/2018.² Also incl. registered couples of the same sex.³ Children regardless of age.

Source: Census (1990), Helsinki City's population register and Statistics Finland.

| | Population 1.1.2018 | Population change 2017 ¹ | Surplus of births over deaths | Net migration Altogether ² | Across Helsinki's boundaries | Within Helsinki ² |
|--|------------------------|---|--|--|------------------------------------|---------------------------------|
| The whole city | 643,272 | 8,091 | 1,524 | .. | .. | .. |
| 1. Southern Major District | 116,443 | 3,768 | 460 | .. | .. | .. |
| 101 Vironniemi district | 12,629 | 125 | 23 | .. | .. | .. |
| 102 Ullanlinna district | 24,508 | -130 | 76 | .. | .. | .. |
| 103 Kampinmalmi district | 39,617 | 2,797 | 230 | .. | .. | .. |
| 104 Taka-Töölö district | 15,492 | 5 | -8 | .. | .. | .. |
| 105 Lauttasaari district | 24,197 | 971 | 139 | .. | .. | .. |
| 2. Western Major District | 109,306 | 988 | 235 | .. | .. | .. |
| 201 Reijola district | 17,401 | -5 | 38 | .. | .. | .. |
| 202 Munkkiniemi district | 17,982 | 270 | -15 | .. | .. | .. |
| 203 Haaga district | 27,606 | 214 | -8 | .. | .. | .. |
| 204 Pitäjänmäki district | 18,122 | 106 | 92 | .. | .. | .. |
| 205 Kaarela district | 28,195 | 403 | 128 | .. | .. | .. |
| 3. Central Major District | 92,618 | 663 | 256 | .. | .. | .. |
| 301 Kallio district | 29,373 | 198 | 72 | .. | .. | .. |
| 302 Alppiharju district | 12,177 | 88 | 2 | .. | .. | .. |
| 303 Vallila district | 16,532 | 101 | 81 | .. | .. | .. |
| 304 Pasila district | 9,377 | 189 | 9 | .. | .. | .. |
| 305 Vanhankaupunki district | 25,159 | 87 | 92 | .. | .. | .. |
| 4. Northern Major District | 43,112 | 344 | 87 | .. | .. | .. |
| 401 Maunula district | 9,086 | 115 | -4 | .. | .. | .. |
| 402 Länsi-Pakila district | 7,033 | 49 | 16 | .. | .. | .. |
| 403 Tuomarinkylä district | 8,699 | -35 | 20 | .. | .. | .. |
| 404 Oulunkylä district | 14,597 | 223 | 50 | .. | .. | .. |
| 405 Itä-Pakila district | 3,697 | -8 | 5 | .. | .. | .. |
| 5. North-Eastern Major District | 99,765 | 824 | 412 | .. | .. | .. |
| 501 Latokartano district | 25,043 | 292 | 162 | .. | .. | .. |
| 502 Pukinmäki district | 8,371 | 54 | 13 | .. | .. | .. |
| 503 Malmi district | 29,087 | -200 | 64 | .. | .. | .. |
| 504 Suutarila district | 11,362 | 132 | 41 | .. | .. | .. |
| 505 Puistola district | 20,255 | 187 | 113 | .. | .. | .. |
| 506 Jakomäki district | 5,647 | 359 | 19 | .. | .. | .. |
| 6. South-Eastern Major District | 51,407 | 931 | 192 | .. | .. | .. |
| 601 Kulosaari district | 3,965 | 101 | 8 | .. | .. | .. |
| 602 Herttoniemi district | 28,566 | 284 | 129 | .. | .. | .. |
| 603 Laajasalo district | 18,876 | 546 | 55 | .. | .. | .. |
| 7. Eastern Major District | 112,012 | 1,341 | 154 | .. | .. | .. |
| 701 Vartiokylä district | 22,423 | 170 | -40 | .. | .. | .. |
| 702 Myllypuro district | 12,164 | -36 | 8 | .. | .. | .. |
| 703 Mellunkylä district | 38,771 | 708 | 45 | .. | .. | .. |
| 704 Vuosaari district | 38,654 | 499 | 141 | .. | .. | .. |
| 8. Östersundom Major District | 2,007 | -37 | 1 | .. | .. | .. |
| 801 Östersundom | 2,007 | -37 | 1 | .. | .. | .. |
| Others | 16,602 | -731 | -273 | .. | .. | .. |
| Inner Helsinki | 202,280 | 3,447 | 615 | .. | .. | .. |
| Outer Helsinki | 424,390 | 5,375 | 1,182 | .. | .. | .. |

¹ Incl. corrections of population figure.² Data not available.

Source: Statistics Finland.

| | Born alive Number | Live birth rate, o/oo ¹ | Boys Number | % ² | Out of wedlock Number | % ² |
|-----------------------|----------------------|------------------------------------|----------------|----------------|--------------------------|----------------|
| Annual average | | | | | | |
| 1901–05 | 2,889 | 28.5 | 1,468 | 50.8 | 453 | 15.7 |
| 1906–10 | 3,558 | 28.8 | 1,831 | 51.5 | 603 | 16.9 |
| 1911–15 | 3,464 | 22.0 | 1,776 | 51.3 | 658 | 19.0 |
| 1916–20 | 2,703 | 15.0 | 1,393 | 51.5 | 385 | 14.2 |
| 1921–25 | 2,610 | 13.3 | 1,351 | 51.8 | 261 | 10.0 |
| 1926–30 | 2,652 | 12.2 | 1,341 | 50.6 | 237 | 8.9 |
| 1931–35 | 2,575 | 10.6 | 1,322 | 51.3 | 257 | 10.0 |
| 1936–40 | 3,722 | 13.6 | 1,916 | 51.5 | 375 | 10.1 |
| 1941–45 | 5,987 | 20.1 | 3,111 | 52.0 | 462 | 7.7 |
| 1946–50 | 7,723 | 22.4 | 3,969 | 51.4 | 485 | 6.3 |
| 1951–55 | 6,731 | 17.2 | 3,420 | 50.8 | 488 | 7.3 |
| 1956–60 | 7,505 | 17.3 | 3,868 | 51.5 | 491 | 6.5 |
| 1961–65 | 8,492 | 17.6 | 4,343 | 51.1 | 510 | 6.0 |
| 1966–70 | 8,389 | 15.9 | 4,274 | 50.9 | 569 | 6.8 |
| 1971–75 | 6,454 | 12.6 | 3,299 | 51.1 | 625 | 9.7 |
| 1976–80 | 5,994 | 12.3 | 3,114 | 52.0 | 828 | 13.8 |
| 1981–85 | 5,939 | 12.3 | 3,031 | 51.0 | 998 | 16.8 |
| 1986–90 | 6,110 | 12.5 | 3,129 | 51.2 | 1,553 | 25.4 |
| 1991–95 | 6,692 | 13.2 | 3,440 | 51.4 | 2,261 | 33.8 |
| 1996–2000 | 6,351 | 11.7 | 3,238 | 51.0 | 2,449 | 38.6 |
| 2001–2005 | 6,163 | 11.0 | 3,156 | 51.2 | 2,463 | 40.0 |
| 2006–2010 | 6,377 | 11.1 | 3,254 | 51.0 | 2,554 | 40.1 |
| 2011–2015 | 6,816 | 11.2 | 3,513 | 51.5 | 2,814 | 41.3 |
| Annually | | | | | | |
| 2007 | 6,079 | 10.7 | 3,154 | 51.9 | 2,434 | 40.0 |
| 2008 | 6,407 | 11.2 | 3,242 | 50.6 | 2,591 | 40.4 |
| 2009 | 6,533 | 11.3 | 3,264 | 50.0 | 2,585 | 39.6 |
| 2010 | 6,709 | 11.4 | 3,463 | 51.6 | 2,700 | 40.2 |
| 2011 | 6,619 | 11.2 | 3,405 | 51.4 | 2,634 | 39.8 |
| 2012 | 6,748 | 11.3 | 3,466 | 51.4 | 2,803 | 41.5 |
| 2013 | 6,789 | 11.2 | 3,521 | 51.9 | 2,807 | 41.3 |
| 2014 | 6,907 | 11.2 | 3,520 | 51.0 | 2,850 | 41.3 |
| 2015 | 7,016 | 11.2 | 3,654 | 52.1 | 2,977 | 42.4 |
| 2016 | 6,803 | 10.8 | 3,483 | 51.2 | 2,881 | 42.3 |
| 2017 | 6,566 | 10.3 | 3,322 | 50.6 | 2,750 | 41.9 |

¹ Per 1,000 persons in the average population number.

² Of all live births.

Source: Statistics Finland and for 1986–93 Helsinki's population data system.

2.10

Deaths¹ in Helsinki in 1901–2017

| | Men Number | % | Women Number | % | Altogether Number | General death rate o/oo ² | Of which less than 1 year olds Altogether | Boys |
|----------------|---------------|------|-----------------|------|----------------------|--|--|------|
| Annual average | | | | | | | | |
| 1901–05 | 937 | 53.5 | 816 | 46.5 | 1,753 | 17.3 | 550 | 300 |
| 1906–10 | 1,077 | 53.1 | 953 | 47.0 | 2,030 | 16.4 | 556 | 302 |
| 1911–15 | 1,170 | 52.5 | 1,059 | 47.5 | 2,229 | 14.2 | 499 | 280 |
| 1916–20 | 1,642 | 57.6 | 1,209 | 42.4 | 2,851 | 15.9 | 313 | 167 |
| 1921–25 | 1,092 | 51.4 | 1,035 | 48.7 | 2,126 | 10.8 | 188 | 103 |
| 1926–30 | 1,373 | 51.2 | 1,310 | 48.8 | 2,683 | 12.4 | 176 | 94 |
| 1931–35 | 1,367 | 49.8 | 1,377 | 50.2 | 2,744 | 11.2 | 147 | 81 |
| 1936–40 | 1,940 | 54.4 | 1,630 | 45.7 | 3,569 | 13.1 | 181 | 104 |
| 1941–45 | 2,703 | 58.6 | 1,908 | 41.4 | 4,610 | 15.5 | 339 | 185 |
| 1946–50 | 1,989 | 51.1 | 1,902 | 48.9 | 3,891 | 11.3 | 342 | 192 |
| 1951–55 | 1,829 | 48.5 | 1,941 | 51.5 | 3,770 | 9.7 | 150 | 88 |
| 1956–60 | 1,986 | 47.6 | 2,184 | 52.4 | 4,169 | 9.6 | 140 | 77 |
| 1961–65 | 2,210 | 46.6 | 2,533 | 53.4 | 4,743 | 9.8 | 163 | 93 |
| 1966–70 | 2,499 | 48.4 | 2,663 | 51.6 | 5,162 | 9.8 | 124 | 67 |
| 1971–75 | 2,546 | 49.0 | 2,653 | 51.0 | 5,198 | 10.2 | 71 | 43 |
| 1976–80 | 2,479 | 47.3 | 2,761 | 52.7 | 5,240 | 10.7 | 46 | 26 |
| 1981–85 | 2,387 | 45.6 | 2,852 | 54.4 | 5,238 | 10.8 | 38 | 23 |
| 1986–90 | 2,471 | 44.1 | 3,127 | 55.9 | 5,598 | 11.4 | 34 | 19 |
| 1991–95 | 2,312 | 43.5 | 2,999 | 56.5 | 5,311 | 10.5 | 33 | 19 |
| 1996–2000 | 2,272 | 43.7 | 2,926 | 56.3 | 5,197 | 9.6 | 28 | 15 |
| 2001–2005 | 2,262 | 44.7 | 2,798 | 55.3 | 5,060 | 9.0 | 19 | 8 |
| 2006–2010 | 2,293 | 46.2 | 2,667 | 53.8 | 4,959 | 8.6 | 15 | 8 |
| 2011–2015 | 2,316 | 45.9 | 2,726 | 54.1 | 5,042 | 8.3 | 15 | 8 |
| Annually | | | | | | | | |
| 2010 | 2,349 | 46.0 | 2,760 | 54.0 | 5,109 | 8.7 | 21 | 9 |
| 2012 | 2,323 | 45.8 | 2,751 | 54.2 | 5,074 | 8.5 | 17 | 9 |
| 2013 | 2,301 | 46.3 | 2,673 | 53.7 | 4,974 | 8.2 | 11 | 6 |
| 2014 | 2,296 | 45.5 | 2,753 | 54.5 | 5,049 | 8.2 | 17 | 8 |
| 2015 | 2,356 | 45.9 | 2,779 | 54.1 | 5,135 | 8.2 | 10 | 5 |
| 2016 | 2,372 | 46.2 | 2,758 | 53.8 | 5,130 | 8.1 | 12 | 6 |
| 2017 | 2,380 | 47.2 | 2,662 | 52.8 | 5,042 | 7.9 | 8 | 7 |

¹ 1950 or earlier including all those declared dead.

² Per 1,000 persons in the average population number.

Source: Statistics Finland and for 1986–93 Helsinki's population data system.

2.11

Life expectancy (average expectation of remaining lifetime) 1991–2017

| Age | 1991–95 | | | 2001–05 | | | 2011–15 | | | 2017 | | |
|-----|---------|------|-------|---------|------|-------|---------|------|-------|-------|------|-------|
| | Total | Men | Women | Total | Men | Women | Total | Men | Women | Total | Men | Women |
| 0 | 75.8 | 71.5 | 79.3 | 78.2 | 74.4 | 81.3 | 80.7 | 77.5 | 83.3 | 81.6 | 78.4 | 84.3 |
| 10 | 66.3 | 62.0 | 69.8 | 68.6 | 64.8 | 71.7 | 70.9 | 67.7 | 73.6 | 71.8 | 68.7 | 74.4 |
| 20 | 56.5 | 52.2 | 59.9 | 58.7 | 55.0 | 61.8 | 61.0 | 57.8 | 63.7 | 61.9 | 58.9 | 64.5 |
| 30 | 46.9 | 42.9 | 50.2 | 49.0 | 45.4 | 52.0 | 51.3 | 48.2 | 53.9 | 52.2 | 49.3 | 54.6 |
| 40 | 37.6 | 33.8 | 40.6 | 39.5 | 36.1 | 42.2 | 41.6 | 38.7 | 44.1 | 42.5 | 39.6 | 44.9 |
| 50 | 28.8 | 25.4 | 31.4 | 30.5 | 27.3 | 33.0 | 32.3 | 29.5 | 34.5 | 33.1 | 30.5 | 35.2 |
| 60 | 20.6 | 17.7 | 22.5 | 22.2 | 19.4 | 24.1 | 23.7 | 21.3 | 25.5 | 24.3 | 22.0 | 26.0 |
| 70 | 13.5 | 11.3 | 14.5 | 14.7 | 12.5 | 15.9 | 16.0 | 14.1 | 17.2 | 16.3 | 14.5 | 17.6 |
| 80 | 7.8 | 6.7 | 8.1 | 8.4 | 7.1 | 8.9 | 9.1 | 8.0 | 9.7 | 9.5 | 8.2 | 10.2 |
| 85 | 5.6 | 5.0 | 5.8 | 6.0 | 5.0 | 6.3 | 6.4 | 5.6 | 6.7 | 6.7 | 5.7 | 7.2 |

Source: Statistics Finland and for 1986–93 Helsinki's population data system.

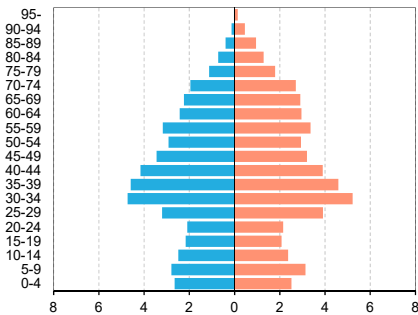
| | 1981–85 | 1986–90 | 1991–95 | 1996–2000 | 2001–05 | 2006–10 | 2011–15 | 2016 |
|----------------------------------|----------------|---------------|---------------|---------------|---------------|---------------|---------------|---------------|
| | Annual average | | | | | | | |
| Migrated from¹ | 21,916 | 24,012 | 26,396 | 30,814 | 32,725 | 36,084 | 39,996 | 42,562 |
| Helsinki Metropolitan Area | 7,651 | 7,782 | 9,163 | 9,511 | 10,643 | 10,609 | 12,435 | 13,173 |
| Rest of Uusimaa province | 2,822 | 3,009 | 3,854 | 4,193 | 4,498 | 4,638 | 5,165 | 5,249 |
| Rest of Finland | 9,619 | 10,694 | 9,663 | 13,780 | 13,292 | 14,457 | 15,392 | 16,916 |
| Abroad | 1,824 | 2,079 | 3,643 | 3,329 | 4,292 | 6,380 | 7,005 | 7,224 |
| Migrated to¹ | 21,887 | 23,393 | 21,174 | 25,930 | 32,700 | 32,405 | 33,758 | 37,460 |
| Helsinki Metropolitan Area | 10,439 | 10,320 | 9,997 | 10,833 | 13,559 | 12,767 | 13,541 | 15,148 |
| Rest of Uusimaa province | 3,900 | 4,462 | 3,867 | 4,718 | 6,006 | 5,724 | 5,170 | 5,408 |
| Rest of Finland | 6,067 | 6,766 | 5,945 | 7,744 | 10,019 | 10,608 | 11,057 | 11,497 |
| Abroad | 1,481 | 1,352 | 1,365 | 2,635 | 3,117 | 3,306 | 3,989 | 5,407 |
| Net migration¹ | 29 | 619 | 5,222 | 4,883 | 25 | 3,679 | 6,239 | 5,102 |
| Helsinki Metropolitan Area | -2,788 | -2,538 | -835 | -1,321 | -2,915 | -2,158 | -1,107 | -1,975 |
| Rest of Uusimaa province | -1,078 | -1,453 | -12 | -525 | -1,507 | -1,086 | -5 | -159 |
| Rest of Finland | 3,552 | 3,928 | 3,718 | 6,035 | 3,272 | 3,848 | 4,334 | 5,419 |
| Abroad | 343 | 727 | 2,278 | 694 | 1,175 | 3,074 | 3,016 | 1,817 |

¹ Incl. area unknown.

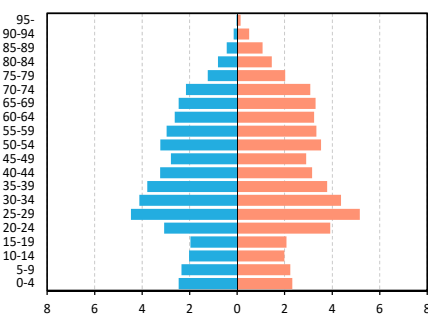
Source: Statistics Finland and for 1986–93 Helsinki's population data system.

Population by mother tongue and age 1.1.2018

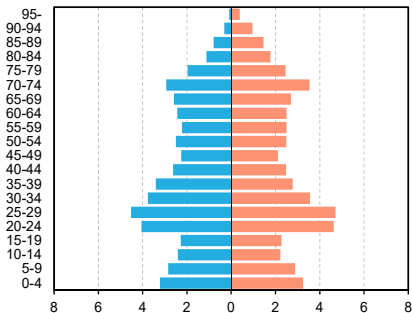
The whole population



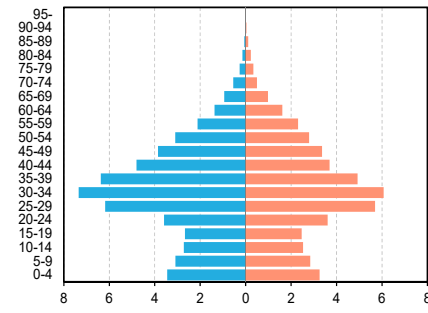
Finnish-speaking population¹



Swedish-speaking population



Population with a foreign mother tongue



¹ Incl. sami-language residents.

Source: Statistics Finland.

List of diagrams and tables

| | | |
|-----|---|----|
| 3.1 | Dwellings by type of building 1970–2017..... | 26 |
| 3.2 | Dwellings by tenure status: Helsinki 1950–2017, Helsinki Region, Tampere, Turku, Oulu and Finland 2017 | 27 |
| 3.3 | Dwellings by size of dwelling (number of rooms) in 2000–2017 | 28 |
| 3.4 | Housing standard by number of rooms 2000–2017..... | 28 |
| 3.5 | Indicators of level of housing in 2000–2017 | 29 |
| 3.6 | Average rent of rented dwellings 2016 and 2017 | 29 |
| 3.7 | Price index of dwellings in 2010–2017..... | 30 |
| 3.8 | Completed dwellings in Helsinki, by type of building in 1985–2017..... | 31 |
| 3.9 | Completed dwellings in Helsinki by type of dwelling in 2000–2017 | 32 |

| | Dwellings total ¹ | Type of house | | | Blocks of flats | Other buildings |
|---|------------------------------|---------------|-----------------------------|-----------------|-----------------|-----------------|
| | | Small houses | | | | |
| | | Total | of which Detached houses | Terraced houses | | |
| Helsinki | | | | | | |
| 1970 | 189,734 | 18,634 | 15,444 | 3,190 | 167,430 | 3,060 |
| 1980 | 221,341 | 22,540 | 14,621 | 7,919 | 194,547 | 4,254 |
| 1990 | 259,033 | 32,833 | 19,346 | 13,487 | 220,376 | 5,746 |
| 2000 | 296,013 | 37,664 | 21,472 | 16,192 | 253,315 | 5,034 |
| 2005 | 313,695 | 40,850 | 23,211 | 17,639 | 268,212 | 4,633 |
| 2006 | 317,745 | 41,400 | 23,519 | 17,881 | 272,117 | 4,228 |
| 2007 | 320,410 | 41,826 | 23,743 | 18,083 | 274,484 | 4,100 |
| 2008 | 323,416 | 42,381 | 24,127 | 18,254 | 276,931 | 4,104 |
| 2009 | 325,818 | 43,060 | 24,804 | 18,256 | 278,598 | 4,160 |
| 2010 | 328,164 | 43,349 | 25,008 | 18,341 | 280,886 | 3,929 |
| 2011 | 331,485 | 43,682 | 25,193 | 18,489 | 284,323 | 3,480 |
| 2012 | 336,409 | 44,055 | 25,451 | 18,604 | 288,603 | 3,751 |
| 2013 | 342,303 | 45,015 | 26,137 | 18,878 | 293,209 | 4,079 |
| 2014 | 346,751 | 45,732 | 26,601 | 19,131 | 296,750 | 4,269 |
| 2015 | 350,314 | 46,137 | 26,837 | 19,300 | 299,895 | 4,282 |
| 2016 | 356,975 | 47,595 | 27,618 | 19,977 | 305,053 | 4,327 |
| 2017 | 361,866 | 48,034 | 27,872 | 20,162 | 309,440 | 4,392 |
| | % | | | | | |
| 1970 | 100 | 9.8 | 8.1 | 1.7 | 88.2 | 1.6 |
| 1980 | 100 | 10.2 | 6.6 | 3.6 | 87.9 | 1.9 |
| 1990 | 100 | 12.7 | 7.5 | 5.2 | 85.1 | 2.2 |
| 2000 | 100 | 12.7 | 7.3 | 5.5 | 85.6 | 1.7 |
| 2005 | 100 | 13.0 | 7.4 | 5.6 | 85.5 | 1.5 |
| 2006 | 100 | 13.0 | 7.4 | 5.6 | 85.6 | 1.3 |
| 2007 | 100 | 13.1 | 7.4 | 5.6 | 85.7 | 1.3 |
| 2008 | 100 | 13.1 | 7.5 | 5.6 | 85.6 | 1.3 |
| 2009 | 100 | 13.2 | 7.6 | 5.6 | 85.5 | 1.3 |
| 2010 | 100 | 13.2 | 7.6 | 5.6 | 85.6 | 1.2 |
| 2011 | 100 | 13.2 | 7.6 | 5.6 | 85.8 | 1.0 |
| 2012 | 100 | 13.1 | 7.6 | 5.5 | 85.8 | 1.1 |
| 2013 | 100 | 13.2 | 7.6 | 5.5 | 85.7 | 1.2 |
| 2014 | 100 | 13.2 | 7.7 | 5.5 | 85.6 | 1.2 |
| 2015 | 100 | 13.2 | 7.7 | 5.5 | 85.6 | 1.2 |
| 2016 | 100 | 13.3 | 7.7 | 5.6 | 85.5 | 1.2 |
| 2017 | 100 | 13.3 | 7.7 | 5.6 | 85.5 | 1.2 |
| 2017 | | | | | | |
| Rest of Helsinki Metro- politan Area | 100 | 38.1 | 24.9 | 13.2 | 61.2 | 0.7 |
| Helsinki Region | 100 | 31.0 | 20.7 | 10.3 | 67.9 | 1.0 |
| Tampere | 100 | 24.0 | 13.9 | 10.1 | 73.7 | 2.3 |
| Turku | 100 | 25.4 | 13.1 | 12.4 | 73.1 | 1.5 |
| Oulu | 100 | 45.3 | 29.9 | 15.4 | 53.2 | 1.5 |
| Finland as a whole | 100 | 52.2 | 38.6 | 13.6 | 45.9 | 1.9 |

¹ Including dwellings whose type of house is unknown.

Source: Censuses and Statistics Finland's Area Data Base.

| | All dwellings | Owner occupied | Rented | of which arava social housing | other rented dwelling | Tenant-owned dwelling status | Other or unknown tenure |
|-------------------------------------|---------------|----------------|---------|-------------------------------|-----------------------|------------------------------|-------------------------|
| Helsinki | | | | | | | |
| 1950 | 105,883 | 25,748 | 79,744 | | | | 391 |
| 1960 | 145,470 | 59,312 | 83,900 | | | | 2,258 |
| 1970 | 189,734 | 81,618 | 102,079 | | | | 6,037 |
| 1980 | 221,341 | 110,095 | 94,444 | | | | 16,802 |
| 1990 | 259,033 | 141,785 | 98,670 | 42,803 | 55,867 | .. | 22,893 |
| 2000 | 296,013 | 128,020 | 138,533 | 65,838 | 72,695 | 4,752 | 24,708 |
| 2005 | 313,695 | 141,165 | 141,277 | 69,855 | 71,422 | 6,300 | 24,953 |
| 2010 ¹ | 328,164 | 146,000 | 146,647 | 69,877 | 76,770 | 7,152 | 28,365 |
| 2011 ² | 331,485 | 147,057 | 148,109 | 68,983 | 79,126 | 7,243 | 29,076 |
| 2012 | 336,409 | 147,886 | 150,473 | 69,131 | 81,342 | 7,674 | 30,376 |
| 2013 | 342,303 | 148,500 | 153,435 | 69,908 | 83,527 | 8,328 | 32,040 |
| 2014 | 346,751 | 147,775 | 161,014 | 69,954 | 91,060 | 8,549 | 29,413 |
| 2015 | 350,314 | 148,302 | 162,215 | 69,794 | 92,421 | 9,000 | 30,797 |
| 2016 | 356,975 | 149,497 | 165,878 | 69,489 | 96,389 | 9,554 | 32,046 |
| 2017 | 361,866 | 150,706 | 169,867 | 69,285 | 100,582 | 10,011 | 31,282 |
| | % | | | | | | |
| 1950 | 100.0 | 24.3 | 75.3 | | | | 0.4 |
| 1960 | 100.0 | 40.8 | 57.7 | | | | 1.6 |
| 1970 | 100.0 | 43.0 | 53.8 | | | | 3.2 |
| 1980 | 100.0 | 49.7 | 42.7 | | | | 7.6 |
| 1990 | 100.0 | 54.7 | 38.1 | 16.5 | 21.6 | .. | 8.8 |
| 2000 | 100.0 | 43.2 | 46.8 | 22.2 | 24.6 | 1.6 | 8.3 |
| 2005 | 100.0 | 45.0 | 45.0 | 22.3 | 22.8 | 2.0 | 8.0 |
| 2010 ¹ | 100.0 | 44.5 | 44.7 | 21.3 | 23.4 | 2.2 | 8.6 |
| 2011 ² | 100.0 | 44.4 | 44.7 | 20.8 | 23.9 | 2.2 | 8.8 |
| 2012 | 100.0 | 44.0 | 44.7 | 20.5 | 24.2 | 2.3 | 9.0 |
| 2013 | 100.0 | 43.4 | 44.8 | 20.4 | 24.4 | 2.4 | 9.4 |
| 2014 | 100.0 | 42.6 | 46.4 | 20.2 | 26.3 | 2.5 | 8.5 |
| 2015 | 100.0 | 42.3 | 46.3 | 19.9 | 26.4 | 2.6 | 8.8 |
| 2016 | 100.0 | 41.9 | 46.5 | 19.5 | 27.0 | 2.7 | 9.0 |
| 2017 | 100.0 | 41.6 | 46.9 | 19.1 | 27.8 | 2.8 | 8.6 |
| 2017 | | | | | | | |
| Rest, of Helsinki Metropolitan Area | 100.0 | 52.5 | 37.3 | 16.5 | 20.8 | 4.2 | 6.1 |
| Helsinki Region | 100.0 | 49.7 | 39.4 | 16.4 | 23.0 | 3.2 | 7.6 |
| Tampere | 100.0 | 44.2 | 45.3 | 14.0 | 31.3 | 2.6 | 8.0 |
| Turku | 100.0 | 43.3 | 45.0 | 14.8 | 30.1 | 2.1 | 9.7 |
| Oulu | 100.0 | 51.7 | 38.8 | 13.3 | 25.5 | 1.7 | 7.7 |
| Finland as a whole | 100.0 | 56.8 | 31.7 | 11.8 | 20.0 | 1.5 | 9.9 |

¹ Since 2009 statistics on arava and interest-subsidised dwellings account for those dwellings released from tenant income restrictions.

² In 2010 Statistics Finland adjusted the tenure status of arava and interest-subsidised dwellings.

³ Dwellings built using the state's short-term interest subsidy have been classified as "other rented dwellings".

Source: Censuses and Statistics Finland's dwelling statistics.

3.3

Dwellings by size of dwelling (number of rooms) in 2000–2017

| | All dwellings ¹ | Number of rooms, excl. kitchen | | | | |
|------------------------------------|----------------------------|--------------------------------|-------------|-------------|-------------|-------------|
| | | 1 | 2 | 3 | 4 | 5– |
| Helsinki | | | | | | |
| 2000 | 296,013 | 71,996 | 108,225 | 63,378 | 33,856 | 16,888 |
| 2005 | 313,695 | 74,262 | 114,330 | 67,671 | 36,798 | 18,558 |
| 2010 | 328,164 | 76,349 | 119,025 | 71,259 | 39,268 | 20,228 |
| 2015 | 350,314 | 80,348 | 127,182 | 77,020 | 42,411 | 21,694 |
| 2017 | 361,866 | 82,703 | 131,362 | 79,790 | 44,103 | 22,345 |
| | % | | | | | |
| 2000 | 100 | 24.3 | 36.6 | 21.4 | 11.4 | 5.7 |
| 2005 | 100 | 23.7 | 36.4 | 21.6 | 11.7 | 5.9 |
| 2010 | 100 | 23.3 | 36.3 | 21.7 | 12.0 | 6.2 |
| 2015 | 100 | 22.9 | 36.3 | 22.0 | 12.1 | 6.2 |
| 2017 | 100 | 22.9 | 36.3 | 22.0 | 12.2 | 6.2 |
| 2017 | | | | | | |
| Rest of Helsinki Metropolitan Area | 100 | 11.4 | 31.1 | 25.4 | 18.6 | 13.1 |
| Helsinki Region | 100 | 16.7 | 32.7 | 23.2 | 15.9 | 11.1 |
| Tampere | 100 | 21.9 | 36.9 | 21.2 | 12.1 | 7.0 |
| Turku | 100 | 22.1 | 36.5 | 22.4 | 11.7 | 6.6 |
| Oulu | 100 | 15.0 | 31.9 | 22.0 | 15.8 | 15.1 |
| Finland as a whole | 100 | 14.9 | 30.0 | 22.2 | 18.0 | 14.3 |

¹Incl. dwellings whose number of rooms is unknown.

Source: Censuses and Statistics Finland's dwelling statistics.

3.4

Housing standard by number of rooms 2000–2017

| | Dwelling households total | Number of rooms not including kitchen | | | | | | |
|--------------------------------|---------------------------|---------------------------------------|-----|-----|-----|-----|-----|-----|
| | | 1 | 2 | 3 | 4 | 5 | 6 | 7– |
| Residents per dwelling | | | | | | | | |
| 2000 | 1.9 | 1.2 | 1.6 | 2.4 | 2.9 | 3.1 | 3.0 | 3.3 |
| 2005 | 1.9 | 1.2 | 1.5 | 2.3 | 2.9 | 3.0 | 3.0 | 3.3 |
| 2010 | 1.9 | 1.2 | 1.5 | 2.2 | 2.8 | 3.0 | 3.0 | 3.4 |
| 2011 | 1.9 | 1.2 | 1.5 | 2.2 | 2.8 | 3.0 | 2.9 | 3.2 |
| 2012 | 1.9 | 1.2 | 1.5 | 2.2 | 2.8 | 3.0 | 2.9 | 3.2 |
| 2013 | 1.9 | 1.2 | 1.5 | 2.2 | 2.8 | 3.0 | 3.0 | 3.2 |
| 2014 | 1.9 | 1.2 | 1.5 | 2.3 | 2.8 | 3.0 | 2.9 | 3.1 |
| 2015 | 1.9 | 1.2 | 1.5 | 2.3 | 2.8 | 3.0 | 3.0 | 3.1 |
| 2016 | 1.9 | 1.2 | 1.5 | 2.3 | 2.8 | 3.0 | 3.0 | 3.1 |
| 2017 | 1.9 | 1.2 | 1.5 | 2.3 | 2.8 | 3.0 | 3.0 | 3.1 |
| Residents per 100 rooms | | | | | | | | |
| 2000 | 79 | 119 | 78 | 80 | 74 | 61 | 50 | 43 |
| 2005 | 76 | 115 | 75 | 76 | 72 | 61 | 49 | 43 |
| 2010 | 76 | 118 | 75 | 75 | 71 | 61 | 49 | 44 |
| 2011 | 76 | 118 | 75 | 75 | 71 | 60 | 49 | 43 |
| 2012 | 76 | 118 | 76 | 75 | 71 | 60 | 49 | 42 |
| 2013 | 76 | 118 | 76 | 75 | 71 | 60 | 49 | 46 |
| 2014 | 76 | 118 | 76 | 75 | 71 | 60 | 49 | 45 |
| 2015 | 76 | 118 | 77 | 76 | 71 | 60 | 49 | 45 |
| 2016 | 76 | 118 | 77 | 76 | 71 | 60 | 49 | 44 |
| 2017 | 76 | 117 | 76 | 76 | 71 | 60 | 49 | 45 |

Source: Censuses and Statistics Finland's statistics on dwelling stock.

| | 2000 | 2005 | 2010 | 2014 | 2015 | 2017 |
|--|---------|---------|---------|---------|---------|---------|
| Dwelling stock | 296,013 | 313,695 | 328,164 | 346,751 | 350,314 | 361,866 |
| Dwelling population | 531,287 | 540,094 | 566,040 | 596,488 | 603,965 | 620,766 |
| Average size of dwellings | | | | | | |
| Rooms per dwelling, kitchen incl. | | | | | | |
| Floor area per dwelling, m ² | 61.8 | 62.3 | 63.0 | 63.3 | 63.3 | 63.3 |
| Housing density | | | | | | |
| Persons per room, kitchen incl. | 62.3 | 63.0 | 63.7 | 63.6 | 63.6 | 63.7 |
| Persons per room, kitchen excl. | 0.79 | 0.76 | 0.75 | 0.76 | 0.76 | 0.77 |
| Floor area per person, m ² | 32.6 | 34.0 | 34.2 | 33.9 | 33.9 | 34.0 |
| Persons per dwelling | 1.91 | 1.85 | 1.86 | 1.87 | 1.88 | 1.88 |
| Crowded housing | | | | | | |
| Norm 4 ¹ | | | | | | |
| Dwelling households, % ² | 12.4 | 9.8 | 10.3 | 10.7 | 10.8 | 10.7 |
| Persons, % ³ | 23.3 | 19.2 | 19.8 | 20.6 | 20.9 | 20.9 |
| Inhabitants in inadequately equipped dwellings | | | | | | |
| Persons living in very inadequately equipped dwellings | 13,005 | 13,118 | 18,261 | 17,036 | 16,733 | 15,561 |
| Percentage | 2.4 | 2.4 | 3.2 | 2.9 | 2.8 | 3.0 |

¹ Norm 4: more than 1 person per room, when the kitchen is not reckoned as a room.

² Proportion of dwelling households.

³ Proportion of the population living in dwellings.

Source: Censuses, Statistics Finland's statistics on housing stock and housing conditions.

| | Helsinki 2016 | 2017 | Espoo 2017 | Vantaa 2017 | Tampere 2017 | Turku 2017 | Outer Helsinki region 2017 | Finland 2017 |
|----------------------------------|----------------------------|--------------|---------------|----------------|-----------------|---------------|-------------------------------|-----------------|
| | euro/m ² /month | | | | | | | |
| All dwellings | 16.10 | 16.59 | 14.58 | 14.46 | 13.45 | 12.53 | 12.93 | 12.93 |
| Number of rooms | | | | | | | | |
| 1 | 21.33 | 22.01 | 18.10 | 17.19 | 16.14 | 15.41 | 15.15 | 16.06 |
| 2 | 15.25 | 15.68 | 14.85 | 14.55 | 13.03 | 12.16 | 12.93 | 12.48 |
| 3– | 13.36 | 13.82 | 13.38 | 13.40 | 11.58 | 10.56 | 11.82 | 11.50 |
| Market-financed dwellings | | | | | | | | |
| Number of rooms | | | | | | | | |
| 1 | 18.76 | 19.40 | 16.48 | 15.82 | 14.30 | 13.24 | 13.48 | 13.98 |
| 2 | 22.95 | 23.64 | 20.20 | 18.59 | 17.03 | 15.98 | 16.07 | 17.60 |
| 3– | 17.38 | 17.95 | 16.61 | 15.75 | 13.45 | 12.42 | 13.25 | 13.22 |
| 3– | 15.23 | 15.95 | 14.90 | 14.20 | 11.83 | 10.85 | 11.98 | 11.78 |
| State-financed dwellings | | | | | | | | |
| Number of rooms | | | | | | | | |
| 1 | 12.51 | 12.77 | 12.99 | 13.43 | 12.30 | 11.54 | 12.46 | 11.68 |
| 2 | 14.10 | 14.61 | 14.89 | 14.77 | 13.74 | 13.64 | 13.73 | 12.67 |
| 3– | 12.81 | 13.04 | 13.47 | 13.68 | 12.53 | 11.84 | 12.69 | 11.73 |
| 3– | 11.86 | 12.09 | 12.26 | 12.93 | 11.37 | 10.28 | 11.70 | 11.23 |
| New rental contracts | | | | | | | | |
| Market-financed dwellings | | | | | | | | |
| Number of rooms | | | | | | | | |
| 1 | 20.77 | 21.22 | 17.30 | 16.85 | 14.83 | 14.36 | 14.14 | 14.71 |
| 2 | 25.01 | 25.34 | 21.33 | 20.28 | 17.6 | 16.96 | 17.18 | 18.41 |
| 3– | 18.67 | 19.17 | 17.11 | 16.43 | 13.73 | 13.28 | 13.63 | 13.72 |
| 3– | 16.35 | 16.93 | 15.21 | 14.64 | 12.10 | 11.64 | 11.98 | 11.91 |

Note: Statistics on rents have changed as of March 2013.

Source: Statistics Finland's statistics on rents.

| Year, quarter | Helsinki | Espoo and Kauniainen | Vantaa | Outer Helsinki Region | Tampere | Turku | Finland |
|-----------------|----------|-------------------------|--------|--------------------------|---------|-------|---------|
| 2010=100 | | | | | | | |
| 2010 | 100.0 | 100.0 | 100.0 | 100.0 | 100.0 | 100.0 | 100.0 |
| 2011 | 103.7 | 102.2 | 102.5 | 101.5 | 102.6 | 102.4 | 102.6 |
| 2012 | 106.5 | 104.4 | 103.8 | 102.8 | 104.5 | 104.5 | 104.2 |
| 2013 | 110.5 | 104.8 | 103.4 | 102.8 | 106.1 | 106.1 | 105.6 |
| 2014 | 110.9 | 104.0 | 103.5 | 101.5 | 106.7 | 106.4 | 104.8 |
| 2015 | 111.2 | 103.6 | 101.9 | 98.6 | 107.6 | 107.4 | 103.9 |
| 2016 | 114.3 | 104.8 | 102.7 | 98.6 | 108.8 | 108.3 | 104.8 |
| 2017 | 118.2 | 106.8 | 103.1 | 98.2 | 110.9 | 112.2 | 105.9 |
| 2010 | | | | | | | |
| I | 98.0 | 98.4 | 98.4 | 100.0 | 98.3 | 98.1 | 98.2 |
| II | 100.5 | 99.7 | 100.5 | 99.3 | 100.1 | 100.7 | 100.2 |
| III | 100.8 | 100.9 | 100.3 | 100.6 | 100.4 | 101.0 | 100.8 |
| IV | 100.8 | 101.0 | 100.9 | 100.1 | 101.2 | 100.2 | 100.8 |
| 2011 | | | | | | | |
| I | 102.7 | 101.3 | 101.1 | 100.9 | 103.8 | 102.8 | 101.9 |
| II | 104.6 | 103.5 | 102.8 | 102.2 | 102.8 | 103.7 | 103.4 |
| III | 104.3 | 103.1 | 103.7 | 102.8 | 102.9 | 101.9 | 103.3 |
| IV | 103.2 | 100.9 | 102.6 | 100.3 | 100.9 | 101.1 | 101.8 |
| 2012 | | | | | | | |
| I | 105.2 | 102.7 | 103.1 | 101.8 | 102.8 | 103.6 | 103.2 |
| II | 105.9 | 104.8 | 103.9 | 102.6 | 104.3 | 104.6 | 104.2 |
| III | 107.3 | 105.2 | 104.9 | 103.4 | 106.1 | 105.5 | 105.0 |
| IV | 107.7 | 105.0 | 103.5 | 103.4 | 105.0 | 104.3 | 104.5 |
| 2013 | | | | | | | |
| I | 109.2 | 103.9 | 102.9 | 102.5 | 104.6 | 105.8 | 104.8 |
| II | 110.2 | 105.0 | 104.1 | 103.6 | 107.1 | 106.3 | 106.0 |
| III | 111.9 | 105.5 | 103.5 | 102.7 | 107.3 | 106.6 | 106.1 |
| IV | 110.7 | 104.9 | 103.2 | 102.3 | 105.6 | 105.7 | 105.4 |
| 2014 | | | | | | | |
| I | 110.7 | 104.2 | 103.8 | 103.1 | 105.9 | 106.3 | 104.8 |
| II | 112.1 | 104.3 | 104.4 | 101.2 | 106.9 | 108.6 | 105.4 |
| III | 110.8 | 103.6 | 104.2 | 101.9 | 107.1 | 106.8 | 105.0 |
| IV | 109.9 | 103.9 | 101.5 | 100.0 | 106.7 | 104.1 | 104.0 |
| 2015 | | | | | | | |
| I | 110.7 | 102.8 | 102.4 | 98.8 | 106.3 | 107.7 | 103.6 |
| II | 110.7 | 104.3 | 102.4 | 99.2 | 107.2 | 108.0 | 104.2 |
| III | 111.5 | 103.8 | 101.5 | 98.5 | 109.0 | 106.5 | 104.1 |
| IV | 111.9 | 103.8 | 101.5 | 97.8 | 108.1 | 107.3 | 103.8 |
| 2016 | | | | | | | |
| I | 112.5 | 102.5 | 101.7 | 97.8 | 108.7 | 108.2 | 104.0 |
| II | 114.1 | 105.8 | 103.3 | 99.4 | 109.0 | 108.8 | 105.2 |
| III | 115.0 | 105.5 | 103.1 | 99.6 | 109.0 | 107.9 | 105.4 |
| IV | 115.6 | 105.3 | 102.8 | 97.8 | 108.7 | 108.5 | 104.8 |
| 2017 | | | | | | | |
| I | 115.5 | 106.1 | 102.0 | 98.5 | 109.7 | 110.6 | 104.8 |
| II | 118.5 | 107.0 | 103.1 | 99.5 | 110.6 | 111.8 | 106.3 |
| III | 119.0 | 106.9 | 103.7 | 98.0 | 112.7 | 112.4 | 106.4 |
| IV | 119.7 | 107.2 | 103.8 | 96.6 | 110.5 | 113.9 | 106.3 |

Source: Statistics Finland's statistics on rents.

| Type of building | Total | Detached houses | Detached terraced houses | Blocks of flats | Others | State financed total | Built by the city, total |
|---|---------|-----------------|--------------------------|-----------------|--------|----------------------|--------------------------|
| Dwellings | | | | | | | |
| Annual average | | | | | | | |
| 1985–1989 | 4,211 | 656 | 612 | 2,913 | 29 | 1,695 | 1,328 |
| 1990–1994 | 3,974 | 391 | 272 | 3,285 | 27 | 2,793 | 1,633 |
| 1995–1999 | 3,457 | 290 | 194 | 2,961 | 12 | 2,685 | 1,150 |
| 2000–2004 | 3,822 | 369 | 343 | 3,091 | 18 | 1,783 | 1,012 |
| 2005–2009 | 2,513 | 286 | 154 | 2,041 | 33 | 664 | 478 |
| 2010–2014 | 3,671 | 279 | 170 | 3,206 | 16 | 1,382 | 705 |
| Annually | | | | | | | |
| 2000 | 4,853 | 365 | 440 | 4,048 | 0 | 2,656 | 1,182 |
| 2005 | 2,698 | 366 | 190 | 2,003 | 139 | 660 | 513 |
| 2006 | 2,289 | 278 | 134 | 1,876 | 1 | 574 | 306 |
| 2007 | 2,881 | 259 | 233 | 2,386 | 4 | 899 | 748 |
| 2008 | 2,451 | 295 | 150 | 1,988 | 18 | 432 | 418 |
| 2009 | 2,245 | 230 | 62 | 1,952 | 1 | 614 | 403 |
| 2010 | 2,059 | 178 | 69 | 1,807 | 5 | 1,178 | 345 |
| 2011 | 3,656 | 273 | 159 | 3,224 | 0 | 820 | 395 |
| 2012 | 4,643 | 310 | 125 | 4,204 | 4 | 1,453 | 784 |
| 2013 | 4,320 | 300 | 244 | 3,721 | 55 | 1,141 | 1,000 |
| 2014 | 3,679 | 334 | 254 | 3,075 | 16 | 1,371 | 1,000 |
| 2015 | 3,718 | 281 | 187 | 3,247 | 3 | 823 | 522 |
| 2016 | 3,985 | 256 | 232 | 3,326 | 171 | 1,062 | 482 |
| 2017 | 4,520 | 248 | 171 | 4,094 | 7 | 1,502 | 838 |
| Housing, floor area, m² | | | | | | | |
| Annual average | | | | | | | |
| 1985–1989 | 287,477 | 64,596 | 50,347 | 170,842 | 1,692 | 102,320 | 76,669 |
| 1990–1994 | 270,615 | 41,674 | 22,651 | 204,233 | 2,057 | 176,917 | 102,637 |
| 1995–1999 | 236,495 | 33,142 | 17,364 | 185,275 | 715 | 169,026 | 72,776 |
| 2000–2004 | 270,429 | 44,624 | 30,712 | 194,082 | 1,021 | 111,898 | 68,390 |
| 2005–2009 | 191,168 | 35,796 | 15,351 | 138,099 | 1,922 | 38,190 | 33,230 |
| 2010–2014 | 248,986 | 35,136 | 15,320 | 197,363 | 1,144 | 82,771 | 52,241 |
| Annually | | | | | | | |
| 2000 | 332,680 | 41,316 | 40,259 | 251,149 | 0 | 164,736 | 79,177 |
| 2005 | 200,208 | 46,791 | 17,784 | 127,767 | 7,866 | 34,585 | 32,905 |
| 2006 | 163,433 | 35,330 | 12,904 | 115,157 | 42 | 29,731 | 21,663 |
| 2007 | 215,458 | 31,429 | 23,739 | 159,852 | 438 | 48,581 | 51,573 |
| 2008 | 198,464 | 35,135 | 15,243 | 146,873 | 1,213 | 27,989 | 29,327 |
| 2009 | 178,277 | 30,293 | 7,087 | 140,848 | 49 | 39,698 | 30,684 |
| 2010 | 140,330 | 23,387 | 6,304 | 109,818 | 821 | 67,521 | 26,132 |
| 2011 | 239,687 | 34,955 | 14,076 | 190,622 | 34 | 47,017 | 30,037 |
| 2012 | 301,813 | 40,157 | 11,907 | 249,365 | 384 | 81,100 | 54,658 |
| 2013 | 296,490 | 36,006 | 21,079 | 236,362 | 3,043 | 69,925 | 76,047 |
| 2014 | 266,608 | 41,173 | 23,235 | 200,764 | 1,436 | 82,791 | 74,333 |
| 2015 | 243,619 | 33,179 | 16,721 | 193,375 | 344 | 49,985 | 32,684 |
| 2016 | 247,193 | 28,920 | 18,820 | 190,286 | 9,167 | 61,541 | 35,613 |
| 2017 | 273,537 | 29,019 | 14,559 | 227,728 | 2,231 | 85,069 | 57,485 |

¹New dwellings and extensions, not changes in the purpose of use.

Source: City of Helsinki Executive Office.

| | Dwellings total | 1 room | 2 rooms | 3 rooms | 4 rooms | 5 rooms | 6 rooms | Average size, m ² |
|--|-----------------|--------|---------|---------|---------|---------|---------|------------------------------|
| New dwellings and extensions to dwellings | | | | | | | | |
| 2000 | 4,853 | 629 | 1,875 | 1,170 | 856 | 280 | 43 | 68.2 |
| 2001 | 4,457 | 434 | 1,723 | 1,291 | 690 | 243 | 76 | 69.6 |
| 2002 | 3,083 | 442 | 997 | 799 | 586 | 198 | 61 | 73.7 |
| 2003 | 3,582 | 475 | 1,372 | 834 | 572 | 255 | 74 | 71.3 |
| 2004 | 3,134 | 409 | 1,172 | 830 | 490 | 178 | 55 | 69.6 |
| 2005 | 2,697 | 344 | 966 | 632 | 510 | 180 | 65 | 74.2 |
| 2006 | 2,289 | 367 | 832 | 492 | 406 | 141 | 51 | 71.4 |
| 2007 | 2,881 | 520 | 804 | 734 | 575 | 184 | 64 | 74.8 |
| 2008 | 2,451 | 202 | 842 | 712 | 502 | 129 | 64 | 81.0 |
| 2009 | 2,245 | 202 | 688 | 679 | 446 | 162 | 68 | 79.4 |
| 2010 | 2,059 | 411 | 747 | 500 | 246 | 122 | 33 | 68.2 |
| 2011 | 3,656 | 580 | 1,495 | 922 | 447 | 158 | 54 | 65.7 |
| 2012 | 4,643 | 885 | 1,796 | 1,183 | 540 | 165 | 74 | 65.0 |
| 2013 | 4,320 | 681 | 1,587 | 1,142 | 668 | 197 | 45 | 68.6 |
| 2014 | 3,679 | 592 | 1,129 | 1,014 | 672 | 224 | 48 | 72.5 |
| 2015 | 3,718 | 655 | 1,421 | 997 | 454 | 149 | 42 | 65.5 |
| 2016 | 3,985 | 833 | 1,360 | 987 | 615 | 152 | 38 | 62.0 |
| 2017 | 4,520 | 816 | 1,943 | 1,071 | 525 | 122 | 43 | 60.5 |
| Changed principal use | | | | | | | | |
| 2000 | 245 | 37 | 144 | 38 | 23 | 1 | 2 | 61.2 |
| 2001 | 112 | 32 | 36 | 33 | 8 | 2 | 1 | 64.7 |
| 2002 | 54 | 24 | 18 | 5 | 1 | 3 | 3 | 76.3 |
| 2003 | 230 | 78 | 75 | 35 | 23 | 9 | 10 | 71.2 |
| 2004 | 84 | 24 | 22 | 15 | 17 | 4 | 2 | 80.2 |
| 2005 | 156 | 67 | 57 | 13 | 7 | 9 | 3 | 59.8 |
| 2006 | 208 | 44 | 91 | 34 | 25 | 12 | 2 | 73.3 |
| 2007 | 427 | 128 | 169 | 81 | 36 | 9 | 4 | 68.4 |
| 2008 | 336 | 94 | 104 | 79 | 28 | 22 | 9 | 81.4 |
| 2009 | 267 | 82 | 68 | 60 | 33 | 14 | 10 | 87.9 |
| 2010 | 202 | 58 | 70 | 37 | 23 | 5 | 9 | 79.5 |
| 2011 | 426 | 114 | 195 | 78 | 29 | 5 | 5 | 62.0 |
| 2012 | 532 | 188 | 211 | 82 | 35 | 13 | 3 | 56.7 |
| 2013 | 236 | 72 | 108 | 33 | 14 | 4 | 5 | 60.4 |
| 2014 | 306 | 122 | 105 | 49 | 23 | 5 | 2 | 62.1 |
| 2015 | 341 | 120 | 130 | 54 | 18 | 17 | 2 | 64.0 |
| 2016 | 410 | 164 | 138 | 63 | 20 | 12 | 13 | 60.9 |
| 2017 | 370 | 188 | 114 | 43 | 18 | 2 | 5 | 53.6 |

Source: City of Helsinki Executive Office.

Transport and Tourism

List of diagrams and tables

| | | |
|-----|--|----|
| 4.1 | Public transport in Helsinki 2010–2017 | 34 |
| 4.2 | Motor vehicles registered in Helsinki on 31 Dec. 1995–2017 | 34 |
| 4.3 | Road traffic accidents reported to the police: Helsinki 1995–2017, Espoo, Vantaa, Tampere, Turku, Oulu and Finland overall 2017 | 35 |
| 4.4 | Hotels and overnight stays in Helsinki 2000–2017 | 35 |
| 4.5 | Restaurants and their alcohol sales in 2017 | 36 |

| | 2010 | 2015 | 2017 | |
|---|--------------------------|-----------|-----------------|--------------------------------------|
| Helsinki City Transport | | | | |
| Buses in service ¹ | 183 | 183 | 122 | |
| Trams | 93 | 91 | 86 | |
| Metro coaches | 90 | 90 | ² 36 | |
| Seat kilometres, 1,000 | | | | |
| Trams | 540,000 | 594,800 | 664,600 | |
| Metro | 2,038,000 | 2,165,500 | 2,368,500 | |
| Trips, 1,000 | | | | |
| Trams | 54,496 | 55,230 | 60,178 | |
| Metro | 57,091 | 62,128 | 67,531 | |
| Trips on average per service day | | | | |
| Trams | 151,378 | 153,417 | 204,529 | |
| Metro | 158,586 | 172,578 | 222,650 | |
| Tendered bus services provided for Helsinki Regional Transport Authority HSL | | | | |
| | Services within Helsinki | | | Rest of Helsinki Region ³ |
| | 2010 | 2015 | 2017 | 2017 |
| Line kilometres | 33,046 | 31,075 | 31,297 | 64,817 |
| Trips | 86,200 | 84,987 | 81,158 | 98,149 |

¹ Buses in service on average during rush hour peak in December.

² The concept of "metro train unit" has changed with the introduction of new metro trains. The new trains form a single integrated space.

³ HSL bus services within Espoo, Vantaa, Kerava and Kirkkonummi. Excl. the U train (westbound or back).

Bus services to Kerava, Sipoo and Kirkkonummi are provided in accordance with KOS contracts of the customer-producer type.

Source: Helsinki Regional Transport Authority HSL.

| | 1995 | 2000 | 2005 | 2010 | 2015 | 2017 |
|------------------------------|----------------|----------------|----------------|----------------|----------------|----------------|
| Cars | 157,544 | 186,452 | 204,589 | 232,515 | 253,528 | 264,903 |
| of which in professional use | 1,214 | 1,080 | 1,051 | 1,167 | 1,105 | 1,051 |
| Lorries/trucks | 3,429 | 5,100 | 5,893 | 7,380 | 9,350 | 9,860 |
| Vans | 14,974 | 16,957 | 19,557 | 24,303 | 30,915 | 33,348 |
| Buses | 930 | 1,626 | 1,458 | 1,583 | 1,650 | 1,848 |
| Special cars | 1,388 | 998 | 643 | 510 | 484 | 483 |
| Vehicles total | 178,265 | 211,133 | 232,140 | 266,291 | 295,927 | 310,442 |
| per 1,000 inhabitants | 340 | 380 | 414 | 452 | 471 | 483 |
| of which | | | | | | |
| cars | 300 | 336 | 365 | 395 | 404 | 412 |
| Motor cycles | 5,534 | 7,650 | 11,224 | 15,216 | 16,994 | 17,427 |
| Motor vehicles total | 183,799 | 218,783 | 243,364 | 281,507 | 312,921 | 327,869 |

Source: Statistics Finland.

4.3

Road traffic accidents reported to the police: Helsinki 1995–2017, Espoo, Vantaa, Tampere, Turku, Oulu and Finland overall 2017

| | Accidents leading to casualties | | Victims | Injured | Total | Per 1,000 |
|-----------------|---------------------------------|-----------------------|----------|------------|------------|-------------|
| | Altogether | per 1,000 inhabitants | Killed | | | inhabitants |
| Helsinki | | | | | | |
| 1995 | 812 | 1.5 | 7 | 987 | 994 | 1.9 |
| 2000 | 703 | 1.3 | 16 | 867 | 883 | 1.5 |
| 2005 | 552 | 1.0 | 9 | 721 | 730 | 1.3 |
| 2010 | 545 | 0.9 | 5 | 669 | 674 | 1.1 |
| 2014 | 380 | 0.6 | 6 | 451 | 457 | 0.7 |
| 2015 | 383 | 0.6 | 12 | 443 | 455 | 0.7 |
| 2017 | 404 | 0.6 | 7 | 491 | 498 | 0.8 |
| Espoo | 89 | 0.3 | 6 | 111 | 117 | 0.4 |
| Vantaa | 139 | 0.6 | 2 | 174 | 176 | 0.8 |
| Tampere | 111 | 0.5 | 2 | 124 | 126 | 0.6 |
| Turku | 141 | 0.8 | 5 | 183 | 188 | 1.0 |
| Oulu | 125 | 0.6 | 5 | 157 | 162 | 0.8 |
| Finland overall | 4,435 | 0.8 | 224 | 5,577 | 5,801 | 1.1 |

Source: Liikenneturva, Statistics Finland, Transport and tourism, Road traffic accidents.

4.4

Hotels and overnight stays in Helsinki 2000–2017

| | 2000 | 2005 | 2010 | 2015 | 2017 |
|--|-----------|-----------|-----------|-----------|-----------|
| Hotels and similar on 1 Jan. | 60 | 58 | 63 | 60 | 77 |
| of which hotels | 47 | 48 | 55 | 54 | 69 |
| Rooms | 7,577 | 7,989 | 8,843 | 9,292 | 10,919 |
| Beds | 14,580 | 15,696 | 17,605 | 17,993 | 21,389 |
| Helsinki's proportion of the capacity of hotels and similar in Finland, % ¹ | | | | | |
| of the hotel capacity, % ¹ | 10 | 11 | 11 | 11 | 13 |
| Clients | 1,430.256 | 1,425.002 | 1,821.799 | 2,065.596 | 2,432.752 |
| Rooms | 7,262 | 7,774 | 8,650 | 9,192 | 10,662 |
| Beds | 13,758 | 15,026 | 16,922 | 17,492 | 20,535 |
| Utilisation rate | | | | | |
| percentage of room capacity | 68 | 67 | 67 | 70 | 73 |
| Overnight stays, total | 2,604.647 | 2,555.470 | 3,187.136 | 3,461.958 | 4,175.012 |
| of which foreign nationals, % | 58.0 | 60.2 | 53.6 | 53.2 | 54.1 |

¹ Number of beds.

Source: Statistics Finland.

| | Number of restaurants quarter of a year 4/2017 | Alcohol sales, quarter of a year | | | | |
|---|---|----------------------------------|-------------|-------------|-------------|-------------|
| | | 4/2017 (1 000 euros) | % | 3/2017 % | 2/2017 % | 1/2017 % |
| Municipalities with more than 20 restaurants | | | | | | |
| Restaurants with an A or B licence¹ | | | | | | |
| Finland | 6,712 | 1,068,085 | 100 | 100 | 100 | 100 |
| Entire Uusimaa province | 2,208 | 492,216 | 46.1 | 42.8 | 45.8 | 43.2 |
| Helsinki | 1,303 | 351,212 | 32.9 | 29.0 | 31.7 | 29.9 |
| Espoo | 219 | 35,444 | 3.3 | 3.1 | 3.5 | 3.2 |
| Vantaa | 168 | 55,842 | 5.2 | 4.7 | 5.2 | 5.6 |
| Hanko | 33 | 1,147 | 0.1 | 0.5 | 0.2 | 0.1 |
| Hyvinkää | 42 | 6,955 | 0.7 | 0.6 | 0.6 | 0.5 |
| Järvenpää | 28 | 4,940 | 0.5 | 0.4 | 0.5 | 0.5 |
| Kerava | 23 | 2,247 | 0.2 | 0.2 | 0.2 | 0.3 |
| Kirkkonummi | 36 | 3,484 | 0.3 | 0.4 | 0.4 | 0.3 |
| Lohja | 62 | 5,942 | 0.6 | 0.6 | 0.5 | 0.5 |
| Loviisa | 25 | 1,439 | 0.1 | 0.2 | 0.2 | – |
| Porvoo | 73 | 9,178 | 0.9 | 1.2 | 1.1 | 0.8 |
| Raasepori | 67 | 3,468 | 0.3 | 0.7 | 0.5 | 0.3 |
| Vihti | 23 | 1,741 | 0.2 | 0.2 | 0.2 | – |

Municipalities with more than 10 restaurants

Restaurants with a C licence²

| | | | | | | |
|-------------------------|-------|---------|------|------|------|------|
| Finland | 1,677 | 118,949 | 100 | 100 | 100 | 100 |
| Entire Uusimaa province | 311 | 28,566 | 24.0 | 20.1 | 20.7 | 22.0 |
| Helsinki | 141 | 14,108 | 11.9 | 9.7 | 10.2 | 10.9 |
| Espoo | 24 | 3,135 | 2.6 | 1.8 | 1.5 | 1.9 |
| Vantaa | 36 | 3,466 | 2.9 | 2.1 | 2.1 | 2.5 |
| Hyvinkää | 15 | 1,153 | 1.0 | 0.7 | 0.7 | 0.8 |
| Porvoo | 12 | 949 | 0.8 | 0.8 | 0.9 | – |
| Vihti | 12 | 409 | 0.3 | 0.4 | 0.4 | 0.4 |

¹ Restaurants with an A licence are entitled to serve any alcoholic beverage legally sold in Finland. Those with a B licence may serve alcoholic beverages with a maximum content of 22% by volume.

² Serving only beer, cider and similar beverages with a maximum alcohol content of 4.7% by volume.

Source: Valvira National Supervisory Authority for Welfare and Health.

Health care

List of diagrams and tables

| | | |
|-----|--|----|
| 5.1 | Persons having received health care services provided by the Helsinki City in 2000–2017 | 38 |
| 5.2 | Non-hospital health care services provided by Helsinki City (including outsourced services) 2010–2017 | 39 |
| 5.3 | Helsinki residents having received reimbursements of the fees charged by doctors practising privately 2017 | 39 |
| 5.4 | Use of private-sector health care services reimbursed by the National Health Insurance 2005 - 2017 | 40 |
| 5.5 | Standardised index for diseases of public health importance in the Helsinki Region 2017 | 40 |
| 5.6 | National disability pensions by main group of disease 31 Dec. 2017 | 41 |
| 5.7 | Deaths by cause of death (54-class) in 2016 | 41 |

| | 2000 | 2005 | 2010 | 2015 | 2017 | Percentage of the population 2017 |
|--|----------------|----------------|----------------|----------------|----------------|-----------------------------------|
| Helsinki residents | | | | | | |
| Health care total | 418,616 | 417,599 | 437,503 | 457,571 | 477,681 | 74.3 |
| Outpatient primary health care | 415,789 | 415,675 | 436,645 | 457,083 | 477,356 | 74.2 |
| Inpatient care | 66,951 | 62,803 | 58,647 | 49,250 | 50,703 | 7.9 |
| Primary health care | 375,589 | 376,960 | 407,230 | 423,776 | 442,835 | 68.8 |
| Outpatient primary health care | 372,815 | 374,962 | 405,912 | 423,529 | 442,631 | 68.8 |
| Inpatient care | 14,930 | 13,525 | 15,419 | 10,439 | 11,458 | 1.8 |
| Specialised health care total | 188,968 | 172,984 | 187,075 | 207,590 | 219,677 | 34.1 |
| Outpatient primary health care | 185,882 | 169,969 | 184,479 | 206,127 | 218,353 | 33.9 |
| Inpatient care | 59,100 | 55,881 | 49,237 | 45,649 | 46,633 | 7.2 |
| Specialised somatic healthcare | 175,959 | 160,175 | 175,968 | 192,262 | 201,463 | 31.3 |
| Outpatient primary health care | 172,893 | 157,262 | 173,478 | 190,815 | 200,157 | 31.1 |
| Inpatient care | 54,224 | 51,741 | 46,083 | 43,433 | 44,390 | 6.9 |
| Specialised psychiatric health care | 21,430 | 20,230 | 20,832 | 29,083 | 33,745 | 5.2 |
| Outpatient primary health care | 21,162 | 19,952 | 20,580 | 28,932 | 33,594 | 5.2 |
| Inpatient care | 4,313 | 3,865 | 3,663 | 2,748 | 2,883 | 0.4 |
| Non-Helsinki residents | | | | | | |
| Total health care | 11,348 | 14,774 | 25,696 | 33,888 | 33,902 | |
| Outpatient primary health care | 11,154 | 14,750 | 25,661 | 33,860 | 33,882 | |
| Inpatient care | 75 | 104 | 267 | 292 | 312 | |
| Primary health care | 10,722 | 14,289 | 24,618 | 31,800 | 31,555 | |
| Outpatient primary health care | 10,675 | 14,270 | 24,531 | 31,791 | 31,549 | |
| Inpatient care | 66 | 38 | 168 | 65 | 90 | |
| Specialised health care total | 559 | 698 | 1,689 | 3,146 | 3,601 | |
| Outpatient primary health care | 551 | 694 | 1,661 | 3,110 | 3,567 | |
| Inpatient care | 9 | 66 | 101 | 244 | 247 | |
| Specialised somatic health care | 435 | 294 | 1,158 | 2,165 | 2,409 | |
| Outpatient primary health care | 435 | 294 | 1,158 | 2,138 | 2,390 | |
| Inpatient care | – | – | – | 201 | 189 | |
| Specialised psychiatric health care | 125 | 412 | 596 | 1,114 | 1,340 | |
| Outpatient primary health care | 117 | 408 | 568 | 1,104 | 1,322 | |
| Inpatient care | 9 | 66 | 101 | 43 | 59 | |

Earlier, neurological rehabilitation was included in basic health care, in 2015 in somatic special health care.

Note: The number of people having received care includes all those different persons (by identity number) that received care in the years 2000–2016 at Helsinki City health care facilities or at those of the Hospital District of Helsinki and Uusimaa. One and the same person may have consulted several different services during any given year, but they have been counted only once for each line.

Source: Social Services and Health Care Sector.

| | 2010 | 2014 | 2015 | 2017 |
|---|-----------|-----------|------------|-----------|
| Helsinki residents having received outpatient health care | | | | |
| Total | 436,492 | 447,424 | 456,991 | 477,252 |
| Primary health care | 405,930 | 414,659 | 423,524 | 442,631 |
| Outpatient medical care | 293,590 | 297,710 | 299,342 | 314,843 |
| Public health centre emergency clinics | 76,530 | 74,993 | 74,742 | 75,962 |
| Maternity and child health clinics | 51,929 | 61,498 | 64,569 | 68,554 |
| Home care | 17,043 | 17,724 | 17,865 | 19,716 |
| Oral health | 154,534 | 165,073 | 179,956 | 185,925 |
| Other primary health care | 92,897 | 118,400 | 117,164 | 130,083 |
| Specialised medical care | 184,130 | 199,762 | 205,968 | 218,164 |
| Specialised somatic medical care | 173,251 | 185,748 | 190,775 | 200,065 |
| Specialised psychiatric medical care | 20,420 | 26,537 | 28,762 | 33,456 |
| Helsinki residents' outpatient consultations and treatment visits | | | | |
| Total | 5,099,551 | 6,721,378 | 6,902,146 | 7,288,361 |
| Primary health care | 4,245,486 | 5,656,462 | 5,780,001 | 6,078,600 |
| Outpatient medical care | 1,146,772 | 1,543,816 | 1,501,233 | 1 596,633 |
| Public health centre emergency clinics | 119,481 | 120,285 | 124,671 | 129,247 |
| Maternity and child health clinics | 230,589 | 326,678 | 328,996 | 338,953 |
| Home care | 2,042,287 | 2,715,599 | 2,846,122 | 3,029,848 |
| Oral health | 448,828 | 463,948 | 513,162 | 502,498 |
| Other primary health care | 257,529 | 486,164 | 466,123 | 481,421 |
| Specialised medical care | 854,065 | 1,064,916 | 1, 122,145 | 1,209,761 |
| Specialised somatic medical care | 625,180 | 746,780 | 781,047 | 828,230 |
| Specialised psychiatric medical care | 228,885 | 318,136 | 341,098 | 381,531 |
| Non-resident outpatient consultations and treatment visits in Helsinki | | | | |
| Total | 54,546 | 81,429 | 79,791 | 83,874 |
| Primary health care | 51,170 | 75,637 | 73,117 | 75,106 |
| Outpatient medical care | 7,383 | 16,041 | 14,521 | 17,117 |
| Public health centre emergency clinics | 7,372 | 9,258 | 9,511 | 10,439 |
| Maternity and child health clinics | 1,220 | 4,273 | 3,980 | 4,180 |
| Home care | 1,075 | 1,442 | 1,634 | 969 |
| Oral health | 12,523 | 17,786 | 17,267 | 15,242 |
| Other primary health care | 21,597 | 26,837 | 26,209 | 27,159 |
| Specialised medical care | 3,376 | 5,792 | 6,674 | 8,768 |
| Specialised somatic medical care | 1,747 | 2,740 | 3,152 | 3,699 |
| Specialised psychiatric medical care | 1,629 | 3,052 | 3,522 | 5,069 |

Source: Social Services and Health Care Sector.

| Age | Private GPs or specialists | | Private dental care | |
|-------|----------------------------|---------------------|---------------------|---------------------|
| | Persons | % of the population | Persons | % of the population |
| 0–14 | 27,058 | 29.5 | 1,117 | 1.2 |
| 15–24 | 18,540 | 25.4 | 4,446 | 6.1 |
| 25–44 | 53,111 | 24.4 | 33,941 | 15.6 |
| 45–64 | 49,718 | 32.6 | 49,622 | 32.6 |
| 65– | 50,139 | 46.3 | 44,246 | 40.8 |
| Total | 198,566 | 30.9 | 133,372 | 20.7 |

Source: Kela – The Social Insurance Institution of Finland, Kelasto reports.

5.4

Use of private-sector health care services reimbursed by the National Health Insurance 2005–2017

| | 2005 | 2010 | 2013 | 2014 | 2015 | 2017 |
|---|---------|---------|---------|---------|---------|---------|
| Population ¹ | 560,625 | 588,549 | 612,664 | 620,714 | 628,208 | 643,272 |
| Doctors' fees | | | | | | |
| Number of visits, 1,000 | 525 | 557 | 560 | 550 | 543 | 507 |
| Reimbursements, 1,000 euro ² | 11,871 | 12,441 | 11,731 | 11,380 | 11,264 | 8,788 |
| per inhabitant, euro ² | 21.17 | 21.14 | 19.15 | 18.33 | 17.93 | 13.66 |
| per visit, euro ² | 22.63 | 22.34 | 20.95 | 20.69 | 20.74 | 17.33 |
| Dentists' fees | | | | | | |
| Number of visits, 1,000 | 409 | 357 | 362 | 348 | 337 | 278 |
| Reimbursements, 1,000 euro ² | 16,170 | 17,854 | 17,240 | 16,223 | 12,420 | 6,489 |
| per inhabitant, euro ² | 28.84 | 30.34 | 26.14 | 19.77 | 11.43 | 10.09 |
| per visit, euro ² | 39.54 | 50.08 | 47.66 | 46.62 | 36.85 | 23.34 |
| Examination and treatment | | | | | | |
| Decuctible visits, 1,000 | 188 | 240 | 405 | 433 | 443 | 399 |
| Reimbursements, 1,000 euro ² | 9,377 | 11,225 | 9,533 | 9,107 | 10,093 | 5,605 |
| per inhabitant, euro ² | 16.73 | 19.07 | 15.56 | 14.67 | 16.07 | 8.71 |
| per visit, euro ² | 49.88 | 46.77 | 23.54 | 21.03 | 22.78 | 14.05 |
| Travel | | | | | | |
| Single journeys, 1,000 | 222 | 329 | 364 | 353 | 347 | 292 |
| Reimbursements, 1,000 euro ² | 9,373 | 14,303 | 16,987 | 17,167 | 16,657 | 14,602 |
| per inhabitant, euro ² | 16.72 | 24.30 | 27.73 | 27.66 | 26.52 | 22.70 |
| per visit euro ² | 42.29 | 43.47 | 46.67 | 48.63 | 48.00 | 50.01 |

¹ Population at year-end from Kela – the Social Insurance Institution of Finland's database.

² Based on rates in 2017.

Source: Kela – The Social Insurance Institution of Finland.

5.5

Standardised index for diseases of public health importance in the Helsinki Region 2017

| | Index for diseases of public health importance (Finland=100) | | | | | | | |
|-----------------|--|----------------------|--------------|--------------------------|------------------------------|-------------|-------------------|---------------------|
| | Total | of which Diabetes | Psychoses | Cardiac insufficiency | Rheuma- toid arthritis | Asthma | Hyper- tension | Coronary disease |
| Helsinki | 80.3 | 84.1 | 100.3 | 74.8 | 77.3 | 78.3 | 72.9 | 74.5 |
| Espoo | 76.9 | 86.9 | 75.6 | 65.0 | 80.7 | 76.9 | 72.8 | 80.7 |
| Vantaa | 90.0 | 106.3 | 83.6 | 81.9 | 88.5 | 88.9 | 97.1 | 83.9 |
| Kauniainen | 62.2 | 60.8 | 59.4 | 56.8 | 70.8 | 65.9 | 54.4 | 67.2 |
| Hyvinkää | 99.3 | 103.6 | 100.7 | 90.6 | 84.9 | 119.1 | 92.8 | 103.4 |
| Järvenpää | 96.7 | 101.9 | 101.2 | 102.4 | 88.5 | 106.1 | 92.4 | 84.2 |
| Kerava | 92.4 | 106.4 | 92.0 | 79.2 | 85.4 | 96.4 | 101.6 | 86.1 |
| Kirkkonummi | 84.0 | 96.5 | 74.2 | 77.5 | 87.1 | 84.0 | 83.8 | 85.0 |
| Mäntsälä | 100.4 | 107.0 | 76.0 | 115.4 | 96.3 | 110.1 | 104.0 | 94.3 |
| Nurmijärvi | 94.1 | 108.3 | 75.0 | 84.1 | 90.9 | 109.7 | 98.4 | 92.1 |
| Pornainen | 84.9 | 101.8 | 48.4 | 55.4 | 92.1 | 104.1 | 102.9 | 89.4 |
| Sipoo | 76.6 | 87.2 | 52.5 | 65.5 | 89.5 | 89.0 | 77.7 | 74.5 |
| Tuusula | 96.7 | 120.5 | 73.4 | 92.5 | 95.8 | 104.7 | 94.2 | 96.1 |
| Vihti | 94.3 | 105.6 | 66.7 | 89.4 | 120.5 | 98.9 | 89.1 | 89.8 |

Source: Kela – The Social Insurance Institution of Finland. Kelasto reports.

| | Helsinki | | Finland | |
|--|-----------------------------------|------------|-----------------------------------|------------|
| | All disability pensions Number | % | All disability pensions Number | % |
| Main disease groups altogether | 17,265 | 100 | 206,048 | 100 |
| I Infectious or parasitic diseases | 79 | 0.5 | 509 | 0.2 |
| II Tumours | 424 | 2.5 | 5,071 | 2.5 |
| IV Diseases of internal secretion, nutrition or metabolism | 219 | 1.3 | 2,992 | 1.5 |
| V Disorders of mental health and behavior | 10,336 | 59.9 | 104,245 | 50.6 |
| VI Diseases of the nervous system | 1,390 | 8.1 | 17,990 | 8.7 |
| VII Diseases of the eye and its surrounding structures | 230 | 1.3 | 2,234 | 1.1 |
| IX Diseases of the cardio-vascular system | 795 | 4.6 | 10,320 | 5.0 |
| X Diseases of the respiratory system | 148 | 0.9 | 2,094 | 1.0 |
| XI Diseases of the gastro-intestinal system | 87 | 0.5 | 1,206 | 0.6 |
| XIII Diseases of the musculo-skeletal and articular systems | 2,087 | 12.1 | 41,604 | 20.2 |
| XVII Congenital malformations chromosome abnormalites, etc. | 404 | 2.3 | 4,877 | 2.4 |
| XIX Injuries, poisonings or consequences of certain other external impacts and articular systems | 820 | 4.7 | 9,262 | 4.5 |
| Others | 246 | 1.4 | 3,644 | 1.8 |

Source: Joint statistics of Kela – The Social Insurance Institution of Finland – and the Finnish Centre for Pensions,

| | Persons deceased | | Per 10,000 inhabitants | |
|---|------------------|-------------|------------------------|-------------|
| | Total | Men. % | Total Helsinki | Finland |
| Total | 5,129 | 46.2 | 80.7 | 98.1 |
| Infectious or parasitic diseases | 16 | 56.3 | 0.3 | 0.5 |
| Tumours | 1,316 | 46.4 | 20.7 | 23.4 |
| Diseases of internal secretion. nutrition or metabolism | 72 | 54.2 | 1.1 | 1.3 |
| Dementia. Alzheimer's disease | 893 | 28.3 | 14.1 | 16.7 |
| Other diseases of the nervous and sensory system | 177 | 44.1 | 2.8 | 3.1 |
| Diseases of the cardio-vascular system ² | 1,681 | 49.0 | 26.5 | 35.7 |
| Diseases of the respiratory system | 223 | 46.6 | 3.5 | 3.9 |
| Diseases of the gastro-intestinal system ² | 114 | 42.1 | 1.8 | 2.2 |
| Urological and venereal diseases | 14 | 28.6 | 0.2 | 0.5 |
| Congenital malformations. chromosome abnormalites | 16 | 50.0 | 0.3 | 0.4 |
| Other diseases ² | 62 | 50.0 | 1.0 | 1.1 |
| Unknown or ill-defined causes of death | 41 | 78.0 | 0.6 | 0.3 |
| Alcohol-related diseases and accidental alcohol poisoning | 210 | 70.5 | 3.3 | 3.1 |
| Accidents and violence ² | 292 | 62.0 | 4.6 | 5.8 |
| No death certificate | 2 | 50.0 | 0.0 | 0.2 |

¹ ICD-10 classification of causes of death.

² Except alcohol-related.

Source: Statistics Finland.

Social welfare

List of diagrams and tables

| | | |
|-----|---|----|
| 6.1 | Child welfare 1995–2017 | 44 |
| 6.2 | Benefits for families with children 1995–2017 | 44 |
| 6.3 | Social assistance 1995–2017 | 45 |
| 6.4 | Recipients of pensions in Helsinki on 31 Dec. 2000–2017 | 45 |

| | 1995 | 2000 | 2005 | 2010 | 2015 | 2017 |
|--|--------------|--------------|--------------|---------------|--------------|--------------|
| Child welfare clients during the year | 5,577 | 7,278 | 7,734 | 10,022 | 9,125 | 7,387 |
| of whom | | | | | | |
| Receiving community care | 4,578 | 6,276 | 6,969 | 9,356 | 8,085 | 6,379 |
| Placements | 1,917 | 2,326 | 2,431 | 2,474 | 2,084 | 2 114 |
| Placed with an emergency care order and taken into care | 1,296 | 1,603 | 1,909 | 1,923 | 1,777 | 1,823 |
| of whom placed with an emergency care order | 179 | 222 | 329 | 435 | 432 | 503 |
| In residential care | .. | 1,337 | 1,478 | 1,511 | 972 | 992 |
| In foster care | .. | 1,041 | 999 | 1,101 | 1,052 | 1,033 |
| In professional family homes | .. | 116 | 87 | 117 | 159 | 178 |
| Children aged 0–17 in child welfare services, as % of total population of same age | 5.1 | 6.4 | 6.9 | 8.3 | 7.5 | 5.7 |
| Receiving community care | 4.1 | 5.5 | 6.1 | 8.3 | 6.5 | 4.7 |
| Placed | 1.8 | 2.1 | 2.2 | 2.2 | 1.8 | 1.7 |
| Placed with an emergency care order and taken into care | 1.3 | 1.5 | 1.8 | 1.8 | 1.5 | 1.5 |
| Young people aged 18–20 in child welfare services, as % of total population of same age | 3.8 | 5.0 | 5.8 | 6.2 | 7.0 | 6.7 |
| Receiving community care | 3.5 | 4.2 | 5.5 | 6.2 | 7.0 | 6.8 |
| Placed | 1.1 | 1.4 | 1.6 | 1.6 | 1.4 | 1.4 |
| Placed with an emergency care order and taken into care | 0.5 | 0.8 | 1.0 | 0.8 | 1.0 | 1.0 |

¹Since a new social care act came into effect on 1 April 2015, child protection clients have decreased.

Source: Social Services and Health Care Division.

| | 1995 | 2000 | 2005 | 2010 | 2015 | 2017 |
|---|---------------|---------------|---------------|---------------|----------------------|----------------|
| Child benefits | | | | | | |
| Families receiving child benefits | 54,700 | 54,397 | 52,950 | 56,955 | 60,834 | 62,581 |
| Number of children in family | | | | | | |
| 1 | 28,536 | 27,409 | 26,831 | 29,250 | 30,691 | 30,945 |
| 2 | 19,748 | 19,882 | 19,185 | 20,421 | 22,341 | 23,459 |
| 3 | 5,217 | 5,635 | 5,391 | 5,574 | 5,910 | 6,157 |
| 4 | 936 | 1,100 | 1,046 | 1,094 | 1,280 | 1,367 |
| 5– | 263 | 371 | 497 | 616 | 612 | 653 |
| Children conferring entitlement to child benefit¹ | 89,325 | 91,155 | 88,362 | 94,167 | 101,104 | 104,913 |
| Child benefits paid €1,000 | 118,496 | 118,112 | 123,401 | 124,828 | ² 129,919 | 133,946 |
| Recipients (families) of maternity grants | 5,879 | 5,811 | 5,879 | 6,726 | 6,990 | 6,476 |
| Total value of maternity grants, 1,000 euro ³ | 1,028 | 1,009 | 1,028 | 1,174 | 1,239 | 1,159 |
| of which value of maternity pack | 773 | 731 | 773 | 853 | 925 | 900 |

¹ Including children in institutions.

² Due to a change in the legislation on child benefit, the amount of the benefit decreased by 8,1% as of January 2015.

³ Nominal value.

Source: Kela – The Social Insurance Institution of Finland, Kelasto reports.

6.3

Social assistance 1995–2016

| | 1995 | 2000 | 2005 | 2010 | 2015 | 2016 |
|---|---------------|---------------|---------------|---------------|---------------|---------------|
| Households having received social assistance | 55,060 | 39,257 | 36,792 | 41,947 | 52,613 | 51,895 |
| Single | 39,510 | 28,012 | 27,303 | 32,544 | 40,689 | 39,963 |
| Men | 22,765 | 16,533 | 16,623 | 19,962 | 25,192 | 24,301 |
| Women | 16,745 | 11,479 | 10,680 | 12,582 | 15,497 | 15,662 |
| Single parents | 5,860 | 4,662 | 4,001 | 4,544 | 5,810 | 6,018 |
| Men with children | 1,276 | 804 | 544 | 348 | 518 | 525 |
| Women with children | 4,584 | 3,858 | 3,457 | 4,196 | 5,292 | 5,493 |
| Married and unmarried couples | 9,690 | 6,583 | 5,488 | 4,859 | 6,114 | 5,914 |
| Without children | 4,960 | 3,649 | 3,036 | 2,120 | 2,441 | 2,327 |
| With children to support | 4,730 | 2,934 | 2,452 | 2,739 | 3,673 | 3,587 |
| Persons having received social assistance | 82,107 | 59,123 | 54,090 | 60,492 | 75,895 | 75,293 |
| Percentage of the entire population | 15.6 | 10.6 | 9.6 | 10.3 | 12.1 | 11.9 |

Source: Social Services and Health Care Division.

6.4

Recipients of pensions in Helsinki on 31 Dec. 2000–2017

| | 2000 | 2005 | 2010 | 2015 | 2017 |
|---|----------------|----------------|----------------|----------------|----------------|
| Recipients of pensions in their own right | 108,311 | 111,622 | 120,447 | 128,302 | 132,797 |
| of which: | | | | | |
| Recipients on statutory earnings-related pension | 99,842 | 105,303 | 114,034 | 121,207 | 125,527 |
| Recipients of national pension ¹ | 88,415 | 52,713 | 38,148 | 36,389 | 36,013 |
| Old-age pension | 80,210 | 82,676 | 95,301 | 109,457 | 115,309 |
| Disability pension | 22,375 | 21,897 | 21,355 | 18,269 | 17,265 |
| Unemployment pension | 3,977 | 3,634 | 1,907 | – | – |
| Part-time pension | 3,231 | 4,039 | 2,940 | 1,223 | 813 |
| Percentage of residents having received pensions in their own right | | | | | |
| All recipients, aged 16 or older | 23.2 | 23.5 | 23.9 | 24.0 | 24.3 |
| Aged 55–64, including part-time pensions | 42.1 | 36.6 | 34.2 | 25.0 | 25.2 |
| Aged 55–64, without part-time pensions | 36.6 | 31.0 | 30.4 | 23.5 | 22.6 |
| Recipients of old-age pensions, % of aged 16 or older | 17.2 | 17.4 | 18.9 | 20.5 | 21.1 |
| Recipients of disability pensions, % of aged 16–64 | 5.7 | 5.5 | 5.1 | 4.2 | 3.9 |
| Average pension in one's own right 31.12. euros/month | 1,225 | 1,454 | 1,704 | 2,008 | 2 061 |
| Other national old age, disability and unemployment pension benefits | | | | | |
| Child increase | – | – | 877 | 874 | 805 |
| Front-veteran's supplement | – | – | 4,834 | 2,045 | 1,330 |
| Recipients of survivors' pensions | | | | | |
| Surviving spouses | 22,225 | 21,720 | 20,631 | 19,234 | 18,841 |
| Children | 2,622 | 2,409 | 2,186 | 1,811 | 1,653 |

¹ With effect from 1 January 2001, the cut national pensions and spouses supplement were discontinued.

Source: Finnish Centre for Pensions and The Social Insurance Institution of Finland, Statistical Yearbook of Pensioners in Finland.



Education

List of diagrams and tables

| | | |
|-----|---|----|
| 7.1 | Children receiving early childhood education and care on 31 Dec. 2000–2017..... | 48 |
| 7.2 | Comprehensive schools and general upper secondary schools 2005–2017 | 49 |
| 7.3 | Students and degrees at polytechnics in Helsinki Metropolitan Area 2017 | 49 |
| 7.4 | Students and degrees at universities in Helsinki Metropolitan Area in 2017..... | 50 |
| 7.5 | Numbers of students at various levels of education in Helsinki 2000–2016 | 50 |
| 7.6 | Population 15 years of age and over by educational level and age 2000–2016..... | 51 |

| | 2000 | 2005 | 2010 | 2015 | 2016 | 2017 |
|---|--------|--------|--------|--------|--------|--------|
| Day care in municipal day-care centres | | | | | | |
| Municipal day-care centres | 336 | 282 | 286 | 323 | 326 | 327 |
| Children in day care, total 31.12. | 19,061 | 16,651 | 19,289 | 23,373 | 24,379 | 25,080 |
| Children aged under 3 | 2,994 | 2,977 | 3,820 | 4,529 | 4,732 | 4,897 |
| Children aged 3–6 | 15,376 | 13,607 | 15,431 | 18,791 | 19,592 | 20,142 |
| Children aged 7 | 691 | 67 | 38 | 53 | 55 | 41 |
| as % of total population of same age | | | | | | |
| % of 1–2 year-olds | 26.0 | 27.0 | 31.3 | 33.7 | 35.4 | 36.5 |
| % of 3–6 year-olds | 67.3 | 67.9 | 72.4 | 75.0 | 76.3 | 77.2 |
| Day care in municipal family day care | | | | | | |
| Children in day care, total 31.12. | 2,207 | 1,775 | 1,415 | 1,138 | 1,078 | 971 |
| Children aged under 3 | 877 | 770 | 632 | 517 | 502 | 488 |
| Children aged 3–6 | 1,214 | 947 | 761 | 618 | 575 | 483 |
| Children aged 7 | 116 | 58 | 22 | 3 | 1 | 0 |
| as % of total population of same age | | | | | | |
| % of 1–2 year-olds | 7.5 | 6.9 | 5.1 | 3.8 | 3.7 | 3.6 |
| % of 3–6 year-olds | 5.3 | 4.7 | 3.6 | 2.5 | 2.2 | 1.9 |
| Private early childhood education and care with contract of purchase | | | | | | |
| Private day-care centres with contract of purchase | 52 | 42 | 39 | 10 | 10 | 9 |
| Children from Helsinki in care | 1,348 | 1,117 | 1,007 | 308 | 314 | 278 |
| as % of children aged 1–6 | 3.9 | 3.6 | 3.0 | 0.8 | 0.8 | 0.7 |
| Private early childhood education and care¹ | | | | | | |
| Private day-care centres | 116 | 100 | 109 | 118 | 105 | 122 |
| Places in private day-care centres | 3,120 | 2,768 | 2,926 | 2,998 | 2,884 | 3,335 |

¹ Including private day-care centres with contract of purchase.

Source: Education Division.

| | 2005 | 2010 | 2015 | 2016 | 2017 |
|---|------------|------------|------------|------------|------------|
| All schools in Helsinki | 185 | 176 | 158 | 151 | 145 |
| City-owned schools | 157 | 147 | 129 | 122 | 116 |
| of which | | | | | |
| City's Finnish-language schools | 129 | 120 | 110 | 103 | 99 |
| Comprehensive schools | 112 | 106 | 98 | 91 | 87 |
| Upper secondary general schools | 14 | 13 | 11 | 11 | 11 |
| Upper secondary general schools for adults | 3 | 1 | 1 | 1 | 1 |
| City's Swedish-language schools | 28 | 27 | 19 | 19 | 17 |
| Comprehensive schools | 23 | 23 | 16 | 16 | 14 |
| Upper secondary general schools | 4 | 4 | 3 | 3 | 3 |
| Upper secondary general schools for adults | 1 | – | – | – | – |
| State schools | 6 | 7 | 7 | 7 | 7 |
| Comprehensive schools and upper secondary general schools | 6 | 7 | 7 | 7 | 7 |
| Private schools with which the city has a contract | 14 | 14 | 14 | 14 | 14 |
| Schools at comprehensive and general secondary level | 14 | 14 | 14 | 14 | 14 |
| Private schools | 8 | 8 | 8 | 8 | 8 |
| Comprehensive schools and upper secondary general schools | 6 | 6 | 6 | 6 | 6 |
| Upper secondary general schools for adults | 2 | 2 | 2 | 2 | 2 |

Source: Education Division.

| | Students | | Degrees | |
|--|----------|--------|-------------------------------|---------------------------|
| | New | All | Polytechnic bachelor's degree | Higher polytechnic degree |
| Arcada University of Applied Sciences (primarily Swedish-speaking) | 683 | 2,572 | 422 | 35 |
| Diaconia University of Applied Sciences (Diak) | 934 | 2,962 | 638 | 54 |
| Haaga-Helia University of Applied Sciences | 2,697 | 10,353 | 1 753 | 190 |
| Humak University of Applied Sciences | 434 | 1,514 | 290 | 37 |
| Laurea University of Applied Sciences | 2,081 | 7,475 | 1,575 | 213 |
| Metropolia University of Applied Sciences | 4,431 | 16,399 | 2,669 | 394 |

Source: Statistics Finland.

| | Students | | Degrees Lower and higher university level ¹ | Doctorate level |
|-------------------------------------|----------|--------|--|-----------------|
| | New | All | | |
| University of Helsinki | 4,528 | 31,331 | 5,514 | 542 |
| Aalto University | 2,665 | 17,346 | 3,105 | 264 |
| Hanken School of Economics | 446 | 2,545 | 536 | 13 |
| University of the Arts ² | 312 | 1,968 | 422 | 18 |
| National Defence University | 297 | 963 | 327 | 3 |

¹ Also including physicians' specialisation diplomas.

² The Theatre Academy, Academy of Fine Arts and Sibelius Academy merged into the University of the Arts in 2013.

Source: Statistics Finland.

| | Comprehensive school education | General upper secondary school | Vocational education | Polytechnic education | University education |
|------|-----------------------------------|-----------------------------------|-------------------------|--------------------------|-------------------------|
| 2000 | 49,591 | 17,411 | 16,492 | 16,889 | 45,439 |
| 2005 | 49,485 | 16,408 | 30,406 | 19,573 | 47,449 |
| 2010 | 46,322 | 16,838 | 32,614 | 21,384 | 45,900 |
| 2011 | 46,064 | 16,947 | 34,874 | 21,605 | 46,152 |
| 2012 | 46,185 | 16,371 | 34,704 | 21,983 | 46,063 |
| 2013 | 46,807 | 16,236 | 38,879 | 22,271 | 45,056 |
| 2014 | 47,645 | 15,933 | 41,524 | 22,404 | 44,623 |
| 2015 | 48,719 | 15,867 | 43,370 | 22,665 | 42,250 |
| 2016 | 49,779 | 15,788 | 44,003 | 23,093 | 41,962 |

Source: Statistics Finland.

| | Year | Total | | | | | | |
|--|------|---------------|--------------|--------|---------|--------|---------|---------|
| | | of whom women | Age 15–24 | 25–34 | 35–44 | 45–64 | 65– | |
| Population aged 15 or older | 2000 | 471,692 | 257,019 | 71,689 | 99,083 | 86,249 | 140,105 | 74,566 |
| | 2005 | 480,875 | 259,982 | 72,357 | 96,816 | 85,374 | 148,466 | 77,862 |
| | 2010 | 508,847 | 273,096 | 76,907 | 108,354 | 80,356 | 155,164 | 88,066 |
| | 2016 | 545,509 | 290,468 | 74,266 | 121,157 | 91,255 | 152,839 | 105,992 |
| Population with educational qualification (ISCED 3 or more) | 2000 | 311,475 | 168,382 | 40,012 | 81,784 | 68,463 | 91,484 | 29,732 |
| | 2005 | 329,298 | 178,804 | 38,280 | 80,685 | 68,768 | 106,473 | 35,092 |
| | 2010 | 360,129 | 195,907 | 40,521 | 89,104 | 64,888 | 118,939 | 46,677 |
| | 2016 | 403,573 | 219,636 | 41,388 | 98,562 | 74,380 | 122,737 | 66,506 |
| Secondary (ISCED 3–4), total | 2000 | 156,561 | 81,667 | 36,574 | 38,849 | 29,947 | 38,531 | 12,660 |
| | 2005 | 163,623 | 84,677 | 36,384 | 39,558 | 28,940 | 44,262 | 14,479 |
| | 2010 | 169,328 | 86,309 | 37,293 | 39,624 | 24,834 | 49,386 | 18,191 |
| | 2016 | 178,396 | 89,809 | 37,158 | 41,365 | 25,896 | 48,888 | 25,089 |
| Upper secondary general education | 2000 | 67,922 | 36,446 | 28,339 | 18,763 | 8,831 | 8,896 | 3,093 |
| | 2005 | 71,695 | 37,862 | 28,093 | 20,833 | 8,815 | 10,725 | 3,229 |
| | 2010 | 70,449 | 36,099 | 27,838 | 18,707 | 7,920 | 11,944 | 4,040 |
| | 2016 | 66,648 | 33,300 | 24,667 | 15,818 | 8,441 | 11,976 | 5,746 |
| Secondary vocational education | 2000 | 88,639 | 45,221 | 8,235 | 20,086 | 21,116 | 29,635 | 9,567 |
| | 2005 | 91,928 | 46,815 | 8,291 | 18,725 | 20,125 | 33,537 | 11,250 |
| | 2010 | 98,879 | 50,210 | 9,455 | 20,917 | 16,914 | 37,442 | 14,151 |
| | 2016 | 111,748 | 56,509 | 12,491 | 25,547 | 17,455 | 36,912 | 19,343 |
| Tertiary education (ISCED 5–6), total | 2000 | 154,914 | 86,715 | 3,438 | 42,935 | 38,516 | 52,953 | 17,072 |
| | 2005 | 165,675 | 94,127 | 1,896 | 41,127 | 39,828 | 62,211 | 20,613 |
| | 2010 | 190,801 | 109,598 | 3,228 | 49,480 | 40,054 | 69,553 | 28,486 |
| | 2016 | 225,177 | 129,827 | 4,230 | 57,197 | 48,484 | 73,849 | 41,417 |
| of which | | | | | | | | |
| Lowest-level tertiary education (ISCED 5B) | 2000 | 61,745 | 39,099 | 1,728 | 17,014 | 16,577 | 19,790 | 6,636 |
| | 2005 | 53,406 | 34,037 | 32 | 6,453 | 15,387 | 23,527 | 8,007 |
| | 2010 | 47,708 | 30,426 | 28 | 1,225 | 9,971 | 25,813 | 10,671 |
| | 2016 | 43,272 | 27,825 | 7 | 212 | 3,505 | 24,627 | 14,921 |
| Lower degree (ISCED 5A) | 2000 | 31,864 | 17,590 | 1,300 | 8,090 | 5,621 | 12,632 | 4,221 |
| | 2005 | 42,355 | 24,422 | 1,539 | 16,371 | 6,342 | 13,106 | 4,997 |
| | 2010 | 57,985 | 34,304 | 2,999 | 25,202 | 9,442 | 13,562 | 6,780 |
| | 2016 | 75,867 | 44,268 | 4,002 | 30,674 | 17,556 | 13,908 | 9,727 |
| Higher degree (ISCED 5A) | 2000 | 54,820 | 27,755 | 408 | 17,013 | 14,608 | 17,380 | 5,411 |
| | 2005 | 62,239 | 32,720 | 325 | 17,614 | 16,139 | 21,728 | 6,433 |
| | 2010 | 75,845 | 40,947 | 200 | 22,250 | 18,479 | 25,758 | 9,158 |
| | 2016 | 94,661 | 52,606 | 221 | 25,533 | 24,692 | 30,358 | 13,857 |
| Doctorate level (ISCED 6) | 2000 | 6,485 | 2,271 | 2 | 818 | 1,710 | 3,151 | 804 |
| | 2005 | 7,675 | 2,948 | 0 | 689 | 1,960 | 3,850 | 1,176 |
| | 2010 | 9,263 | 3,921 | 1 | 803 | 2,162 | 4,420 | 1,877 |
| | 2016 | 11,377 | 5,128 | 0 | 778 | 2,731 | 4,956 | 2,912 |
| Basic education only (ISCED 1–2) or education unknown | 2000 | 160,217 | 88,637 | 31,677 | 17,299 | 17,786 | 48,621 | 44,834 |
| | 2005 | 151,577 | 81,178 | 34,077 | 16,131 | 16,606 | 41,993 | 42,770 |
| | 2010 | 148,718 | 77,189 | 36,386 | 19,250 | 15,468 | 36,225 | 41,389 |
| | 2016 | 141,936 | 70,832 | 32,878 | 22,595 | 16,875 | 30,102 | 39,486 |

Source: Statistics Finland.

Culture and leisure

List of diagrams and tables

| | | |
|-----|---|----|
| 8.1 | Number of visitors at prominent tourist attractions in Helsinki in 2000–2017..... | 54 |
| 8.2 | Helsinki City library statistics 2000–2017..... | 55 |
| 8.3 | Sports and recreation 2000–2017..... | 56 |



| | 2000 | 2005 | 2010 | 2015 | 2017 |
|---|-----------|-----------|-----------|-----------|-----------|
| Tourist attraction | | | | | |
| Linnanmäki Amusement Park ¹ | 1,055,532 | 1,197,768 | 1,055,000 | 1,000,000 | 1,100,000 |
| Suomenlinna Sea Fortress | 671,805 | 632,000 | 736,000 | 931,000 | 1,042,000 |
| Helsinki Zoo | 557,697 | 483,202 | 436,135 | 523,602 | 448,882 |
| Temppeliaukio Church | 495,120 | 568,440 | 508,393 | 500,000 | 500,000 |
| Uspensky Cathedral | 450,400 | 500,500 | 500,000 | 400,000 | 400,000 |
| Helsinki Music Festival | 321,872 | 254,454 | 271,896 | 295,970 | 212,836 |
| Casino Helsinki | 228,067 | 274,843 | 292,023 | 295,261 | 286,258 |
| Helsinki, Cathedral and Crypt | 312,421 | 399,278 | 452,300 | 500,000 | 500,000 |
| Ehrensärd Museum | 12,182 | 9,428 | 8,541 | 13,101 | – |
| University of Helsinki Botanical Garden | 58,226 | 74,172 | 28,400 | 38,713 | 30,265 |
| Seurasaaari Open-Air Museum | 51,683 | 40,385 | 30,606 | 41,031 | 54,696 |

¹ Also includes the visitors at the events Carnival of Light, *Jouluhattara* Christmas event, and *Jäähelmi* winter event.

Source: The statistics of each separate tourist attraction.

| | 2000 | 2005 | 2010 | 2015 | 2017 |
|---|------------------|------------------|------------------|-------------------|-------------------|
| Libraries | 37 | 37 | 37 | 36 | 37 |
| Mobile libraries (buses) | 2 | 2 | 2 | 2 | 2 |
| Libraries in hospitals etc. | 17 | 11 | 10 | 10 | 9 |
| Other library premises | 2 | 1 | 1 | – | – |
| Books (incl. music) on 31 Dec. | 1,806.255 | 1,712.109 | 1,612.439 | 1,562.299 | 1,560.737 |
| in Finnish | 1,389.859 | 1,318.287 | 1,236.731 | 1,203.615 | 1,223.355 |
| in Swedish | 191,128 | 167,312 | 145,729 | 129,525 | 131,409 |
| in other languages | 188,158 | 190,669 | 199,020 | 203,166 | 205,973 |
| music scores | 37,110 | 35,841 | 30,959 | 25,993 | 27,364 |
| Sound recordings | 161,141 | 196,479 | 225,654 | 200,480 | 182,022 |
| Image recordings | 29,404 | 37,464 | 42,487 | 55,105 | 57,554 |
| Others | 33,582 | 16,276 | 15,741 | 16,826 | 19,359 |
| Newspaper and periodical subscriptions | 5,949 | 5,204 | 5,005 | 4,715 | 4,003 |
| Borrowers | 243,819 | 229,931 | 211,309 | 235,051 | 237,493 |
| per 1,000 inhabitants | 443 | 410 | 359 | 374 | 372 |
| Home service clients | 302 | 421 | 464 | 410 | 432 |
| Number of visits at the library | 7,160.113 | 6,604.849 | 6,449.357 | 6,133.185 | 6,545.900 |
| Virtual visits | 1,396.804 | 5,012.505 | 6,803.235 | 12,460.193 | 12,882.748 |
| Hours open | 96,911 | 87,863 | 94,304 | 103,912 | 112,589 |
| Total loans | 9,150.598 | 9,179.672 | 8,769,700 | 8,827.319 | 8,962.387 |
| per 1,000 inhabitants | 16.6 | 18.0 | 15.6 | 14.1 | 14.1 |
| per 1,000 borrowers | 37.7 | 43.8 | 43.4 | 37.6 | 37.7 |
| The Main Library | 1,237.993 | 864,490 | 805,018 | 858,324 | 846,209 |
| The other libraries | 7,484.977 | 8,865.415 | 9,174.389 | 7,702.625 | 7,847.892 |
| Number of times the E-material was used | – | – | – | 412,702 | 461,285 |
| Libraries in hospitals etc. | 129,405 | 65,470 | 57,540 | 42,028 | 37,349 |
| Home service | 52,817 | 136,491 | 135,764 | 32,250 | 33,519 |
| Mobile libraries | 237,233 | 241,900 | 239,871 | 192,092 | 197,418 |
| Distance loans ² | 1,655 | 1,367 | 1,127 | 1,075 | 1,038 |
| Percentages of loans | | | | | |
| Books (incl. music) | 73.9 | 71.9 | 70.4 | 77.3 | 79.5 |
| Music sheets and scores | 1.3 | 1.4 | 1.4 | 1.3 | 1.3 |
| Sound recordings | 14.7 | 16.0 | 15.0 | 9.7 | 7.4 |
| Image recordings | 6.7 | 7.9 | 10.4 | 8.2 | 7.1 |
| Others | 4.7 | 4.3 | 4.2 | 4.9 | 4.6 |
| Non-fiction books | 39.3 | 39.0 | 37.3 | 37.0 | 36.4 |
| Fiction books | 60.7 | 61.0 | 62.7 | 62.5 | 63.6 |
| Books for adults | 71.5 | 71.9 | 69.6 | 65.6 | 62.5 |
| Books for children | 28.5 | 28.1 | 30.4 | 34.4 | 37.5 |
| Books in Finnish | 87.7 | 86.9 | 86.3 | 85.7 | 85.9 |
| Books in Swedish | 4.5 | 4.1 | 3.8 | 4.3 | 4.5 |
| Books in other languages | 7.8 | 9.0 | 9.9 | 9.9 | 9.5 |
| Public computers | – | – | 385 | 373 | 380 |
| Public computer sessions | – | – | 1,085,106 | 722,846 | 643,964 |
| Web information services sessions | 1,500 | 19,616 | 15,149 | 7,403 | 8,952 |
| Events and activities | 1,639 | 1,746 | 2,470 | 6,008 | 7,760 |
| Guiding sessions | 671 | 913 | 866 | 1,248 | 1,477 |

¹ From 2003 on, the statistics on the loans of the home service distinguish its own loans from the total number of loans.

² Distance loans received.

Source: Culture and Leisure Division.

| | 2000 | 2005 | 2010 | 2015 | 2017 |
|---|---------|----------------------|----------------------|----------------------|----------------------|
| City-coordinated sports activities | | | | | |
| Customers | 49,386 | 73,562 | 103,004 | 149,169 | 152,216 |
| Sports associations and clubs having received allocations | 397 | 428 | 398 | 371 | 370 |
| Outdoor sports facilities ¹ | | | | | |
| Number in all | 466 | 462 | 462 | 552 | 605 |
| of which | | | | | |
| football pitches, tennis courts etc. | 286 | 298 | 298 | 260 | 244 |
| outdoor swimming stadiums | 2 | 2 | 2 | 2 | 2 |
| visitors | 313,773 | 365,315 | 396,592 | 391,739 | 327,615 |
| Beaches for swimming | 25 | 25 | 28 | 24 | 26 |
| Indoor sports facilities ¹ | | | | | |
| Number in all | 72 | 68 | 69 | 80 | 84 |
| of which public swimming pools ² | 4 | 4 | 4 | 4 | 4 |
| visitors at public swimming pools | 715,055 | ³ 798,944 | ³ 704,456 | ³ 743,264 | ³ 676,081 |
| Recreational areas and parks | | | | | |
| Area, ha | 4,641 | ⁴ 3,852 | ⁴ 3,850 | 3,834 | 3,834 |
| recreational areas, ha | 4,396 | 3,807 | 3,807 | 3,774 | 3,774 |
| parks, ha | 245 | 45 | 43 | ⁵ 60 | ⁵ 60 |
| Mooring places for boats | 9,342 | 11,945 | 12,063 | 11 923 | 11,930 |
| Overnight stays at campsites | 102,850 | 85,699 | 100,787 | 91,234 | 92 827 |

¹ The classification of sports and recreation facilities changed in 2012.

² Owned by the city.

³ Incl. visits at the public swimming pools in Itäkeskus, Jakomäki, Pirkkola and Yrjönkatu. The Jakomäki public swimming pool was closed in 2010.

⁴ The decrease is due to the fact that some waterfront recreational areas such as Uutela, Ramsinniemi, Meri-Rastila and part of Kallahdenniemi are no longer managed by Helsinki City Sports Department, nor is the Kauhala area in Kirkkonummi.

⁵ In addition, Paloheinänhuippu, which has been entirely transferred under the control of the Sports Department.

Source: Helsinki City Sports Department.

Energy and water supply

List of diagrams and tables

| | | |
|-----|--|----|
| 9.1 | Production and supply of electric energy 1990–2017 | 58 |
| 9.2 | Supply and sale of district heating 1990–2017 | 58 |
| 9.3 | Water pumped, sold and consumed 1995–2017..... | 59 |

| | 1990 GWh | 1995 | 2000 | 2005 | 2010 | 2015 | 2017 |
|--|--------------|--------------|--------------|--------------|--------------|--------------|--------------|
| Supply and production | | | | | | | |
| Shares in hydroelectric power stations | 270 | | | 497 | 459 | 868 | 831 |
| Shares in nuclear-electric power stations | 597 | } 1,258 | 1,418 | 1,155 | 1,144 | 1,379 | 1,297 |
| Other shares | 229 | | | | | | |
| Actual purchase | 46 | } 326 | 1,023 | 160 | 159 | 91 | 170 |
| Purchase of substitute electricity | 126 | | | | | | |
| Production of Helsinki City's own power stations | 2,798 | 3,712 | 5,002 | 5,441 | 5,716 | 4,663 | 3,941 |
| Hanasaari | 1,835 | 1,721 | 619 | 803 | 919 | 643 | 1,321 |
| Salmisaari | 832 | 1,033 | 635 | 568 | 566 | 570 | 868 |
| Myllypuro | 73 | – | – | – | – | – | – |
| Vuosaari | 58 | 957 | 3,747 | 3,919 | 4,231 | 3,450 | 1,752 |
| Kellosaari | – | 1 | 1 | – | – | – | – |
| Total supply | 4,066 | 5,296 | 7,443 | 7,570 | 7,859 | 7,035 | 6,292 |

Source: Helen Ltd.

| | 1990 | 1995 | 2000 | 2005 | 2010 | 2015 | 2017 |
|-------------------------------|--------------|--------------|--------------|--------------|--------------|--------------|--------------|
| Total supply, GWh | 5,633 | 6,368 | 6,537 | 7,103 | 7,850 | 6,436 | 7,072 |
| of which | | | | | | | |
| Hanasaari power stations | 3,074 | 3,116 | 1,267 | 1,135 | 1,774 | 1,297 | 2,594 |
| Salmisaari power stations | 1,601 | 1,928 | 1,298 | 1,621 | 1,005 | 1,296 | 1,742 |
| Vuosaari power stations | | 721 | 3,559 | 3,783 | 3,887 | 3,283 | 1,738 |
| Heating sales, GWh | 5,444 | 5,919 | 6,106 | 6,569 | 7,363 | 6,024 | 6,628 |
| To the distribution area | 5,425 | 5,905 | 5,886 | 6,519 | 7,346 | 5,985 | 6,608 |
| Outside the distribution area | 19 | 14 | 220 | 50 | 17 | 39 | 20 |
| Number of clients | 9,257 | 10,192 | 11,374 | 12,800 | 14,010 | 15,039 | 15,273 |

Source: Helen Ltd.

| | 1995 | 2000 | 2005 | 2010 | 2015 | 2017 |
|--|--------|--------|--------|--------|--------|--------|
| Total water pumped, 1,000 m³ | | | | | | |
| Helsinki, partly the Helsinki Metropolitan Area | 70,925 | 80,600 | 81,890 | – | – | – |
| Metropolitan Area | – | – | – | 90,097 | 88,619 | 90,482 |
| Total sales, 1,000 m³ | | | | | | |
| Helsinki, partly the Helsinki Metropolitan Area | 63,763 | 72,013 | 72,657 | – | – | – |
| Metropolitan Area | – | – | – | 71,360 | 71,830 | 72,809 |
| Price of water on 31 Dec., euro/m ³ | | | | | | |
| Helsinki | 0.82 | 0.46 | 0.67 | 0.78 | 1.08 | 1.13 |
| Price of waste water on 31 Dec., euro/m ³ | | | | | | |
| Helsinki | 1.42 | 1.34 | 1.21 | 1.11 | 1.34 | 1.39 |
| Consumers | | | | | | |
| Helsinki | 23,612 | 26,791 | 27,080 | – | – | – |
| Metropolitan Area | | | | 62,864 | 65,855 | 67,218 |
| Specific consumption, litres/resident/24h | | | | | | |
| Helsinki | 272 | 261 | 254 | | | |
| Espoo | 253 | 242 | 236 | } 240 | 216 | 214 |
| Vantaa | 238 | 258 | 245 | | | |
| Tampere | 288 | 260 | 243 | } 238 | 212 | 213 |
| Turku | 305 | 289 | 248 | | | |

Source: Helsinki Region Environmental Services Authority and the cities concerned.

City finances and personnel

List of diagrams and tables

| | | |
|------|---|----|
| 10.1 | City of Helsinki consolidated balance sheet 31 Dec. 2005–2017 | 62 |
| 10.2 | City of Helsinki tax revenue, the proportion of state grants in the operational economy and the annual margin 2000–2017 | 63 |
| 10.3 | City staff by administrative branch on 31 Dec. 2017 | 63 |



| | 31 Dec. 2005 Million euros | 31 Dec. 2010 | 31 Dec. 2015 | 31 Dec. 2017 |
|--|-------------------------------|-----------------|-----------------|-----------------|
| Assets | | | | |
| Fixed assets | | | | |
| Intangible assets | 111.3 | 370.6 | 305.7 | 269.5 |
| Tangible assets | 9,084.3 | 11,252.0 | 12,992.2 | 14,109.6 |
| Securities and other long-term investments | 765.5 | 1,247.3 | 1,167.8 | 1,205.9 |
| Assets managed | 246.0 | 471.4 | 455.7 | 456.8 |
| Current assets | | | | |
| Inventories | 84.1 | 87.5 | 98.8 | 120.6 |
| Receivables | 263.7 | 404.4 | 440.0 | 581.1 |
| Investments | 642.8 | 623.9 | 496.4 | 57.3 |
| Cash and bank receivables | 143.7 | 347.8 | 1,001.6 | 1,475.1 |
| Total assets | 11,341.4 | 14,805.0 | 16,958.2 | 18,275.9 |
| Liabilities | | | | |
| Capital | | | | |
| Fixed capital | 2,977.9 | 2,974.4 | 2,972.4 | 2,972.4 |
| Basic capital of associations and foundations | | 5.8 | 5.8 | 5.8 |
| Share of increase in joint municipal authorities' original capital | 8.0 | – | – | – |
| Fund for annexion fee | 0.7 | – | – | – |
| Revaluation reserve | 1,845.4 | 1,832.2 | 1,813.2 | 1,805.0 |
| Other own funds | 664.4 | 711.7 | 812.7 | 903.4 |
| Other equity | 729.0 | 734.2 | 734.1 | 734.1 |
| Surplus/deficit from previous financial years | 178.7 | 1,314.0 | 3,276.8 | 4,122.3 |
| Surplus/deficit for financial year | 136.8 | 418.2 | 282.4 | 648.3 |
| Minority interests | 49.6 | 60.5 | 69.6 | 85.0 |
| Provisions | 792.7 | 938.5 | 179.6 | 150.0 |
| Capital managed | 607.7 | 779.6 | 567.2 | 572.3 |
| Loans and borrowings | 2,446.9 | 3,825.0 | 4,541.5 | 4,813.8 |
| Long-term | 853.5 | 1,212.7 | 1,702.9 | 1,463.6 |
| Total liabilities | 11,341.4 | 14,805.0 | 16,958.2 | 18,275.9 |
| Loans per inhabitant, euro | 4,497 | 6,917 | 7,977 | 7,732 |

Source: Annual accounts of the City of Helsinki.

10.2

City of Helsinki tax revenue, the proportion of state grants in the operational economy, and the annual margin 2000–2017

| | Total tax revenue ¹ | of which Municipal tax | Real estate tax | Share of corporate tax revenue | Share of state grants in the operational economy | Annual margin |
|---|--------------------------------|---------------------------|-----------------|-----------------------------------|--|---------------|
| | Million euros | | | | | |
| Current monetary value in the relevant year | | | | | | |
| 2000 | 2,163 | 1,347 | 102 | 713 | -13 | 506.1 |
| 2001 | 2,279 | 1,498 | 109 | 672 | -52 | 412.9 |
| 2002 | 1,991 | 1,601 | 112 | 277 | -119 | 98.7 |
| 2003 | 1,984 | 1,643 | 114 | 267 | 8 | 338.1 |
| 2004 | 1,928 | 1,600 | 115 | 211 | 68 | 380.9 |
| 2005 | 1,983 | 1,646 | 120 | 216 | 133 | 329.3 |
| 2006 | 2,094 | 1,748 | 122 | 223 | 174 | 470.7 |
| 2007 | 2,262 | 1,861 | 138 | 262 | 181 | 544.7 |
| 2008 | 2,413 | 1,975 | 149 | 288 | 180 | 539.8 |
| 2009 | 2,404 | 2,028 | 156 | 219 | 161 | 315.3 |
| 2010 | 2,506 | 2,064 | 185 | 257 | 250 | 388.0 |
| 2011 | 2,740 | 2,218 | 187 | 335 | 260 | 574.3 |
| 2012 | 2,759 | 2,306 | 189 | 263 | 297 | 439.1 |
| 2013 | 2,906 | 2,442 | 195 | 269 | 276 | 472.7 |
| 2014 | 2,952 | 2,435 | 207 | 310 | 251 | 480.7 |
| 2015 | 3,068 | 2,481 | 214 | 373 | 273 | 265.1 |
| 2016 | 3,206 | 2,586 | 221 | 397 | 316 | 569.4 |
| 2017 | 3,381 | 2,595 | 257 | 529 | 220 | 837.9 |

¹ The total sum of tax revenue also includes other tax revenue, chiefly dog tax.

Source: Annual accounts of the City of Helsinki.

10.3

City staff by divisions on 31 Dec. 2017

| | Permanent staff Monthly salary | Temporary staff | Altogether |
|--|-----------------------------------|-----------------|------------|
| Central Administration | 3,833 | 425 | 4,258 |
| The Urban Environment Division | 3,224 | 218 | 3,442 |
| Education division | 10,206 | 2,671 | 12,877 |
| Culture and leisure division | 1,584 | 230 | 1,814 |
| Social services and health care division | 11,654 | 3,045 | 14,699 |
| Total | 30,501 | 6,589 | 37,090 |

Source: Executive Office, Financial Management Helsinki.

Labour force

List of diagrams and tables

| | | |
|------|--|----|
| 11.1 | Labour force by industry and age 2016 | 66 |
| 11.2 | Percentage of employed people in various age groups by age and gender 2016 | 67 |
| 11.3 | Unemployment rate % by gender in 2000–2016..... | 68 |

| | Total | | Age | | | | |
|--|----------------|------|---------------|----------------|---------------|---------------|---------------|
| | | % | -24 | 25-39 | 40-49 | 50-59 | 60- |
| Labour force total | 341,043 | | 35,482 | 142,616 | 69,266 | 68,357 | 25,322 |
| Employed total | 300,433 | | 31,977 | 127,323 | 60,793 | 59,197 | 21,143 |
| A Agriculture, forestry and fishing | 490 | 0.2 | 71 | 160 | 84 | 120 | 55 |
| B Mining and quarrying | 49 | 0.0 | 5 | 26 | 8 | 6 | 4 |
| C Manufacturing | 15,863 | 5.3 | 841 | 6,479 | 3,852 | 3,640 | 1,051 |
| D Electricity, gas, heat and air conditioning supply | 1,500 | 0.5 | 48 | 628 | 322 | 350 | 152 |
| E Water supply, sewerage, waste management and remediation activities | 705 | 0.2 | 36 | 297 | 154 | 167 | 51 |
| F Construction | 13,229 | 4.4 | 1,140 | 5,538 | 2,831 | 2,875 | 845 |
| G Wholesale and retail trade; repair of motor vehicles and motorcycles | 33,347 | 11.1 | 5,869 | 14,210 | 5,988 | 5,596 | 1,684 |
| H Transportation and storage | 16,545 | 5.5 | 1,801 | 6,110 | 3,485 | 3,915 | 1,234 |
| I Accommodation and food service activities | 14,624 | 4.9 | 3,597 | 6,395 | 2,423 | 1,755 | 454 |
| J Information and communication | 24,455 | 8.1 | 1,120 | 12,551 | 5,901 | 3,912 | 971 |
| K Financial and insurance activities | 11,256 | 3.7 | 790 | 5,276 | 2,125 | 2,394 | 671 |
| L Real estate activities | 3,531 | 1.2 | 232 | 1,177 | 676 | 1,014 | 432 |
| M Professional, scientific and technical activities | 29,854 | 9.9 | 1,936 | 15,087 | 5,933 | 4,985 | 1,913 |
| N Administrative and support service activities | 27,965 | 9.3 | 6,464 | 11,466 | 4,250 | 4,162 | 1,623 |
| O Public administration and defence; compulsory social security | 17,590 | 5.9 | 363 | 5,982 | 4,191 | 4,838 | 2,216 |
| P Education | 21,887 | 7.3 | 1,179 | 9,112 | 4,925 | 4,680 | 1,991 |
| Q Human health and social work activities | 41,452 | 13.8 | 3,194 | 16,136 | 8,386 | 9,927 | 3,809 |
| R Arts, entertainment and recreation | 10,063 | 3.3 | 1,616 | 4,170 | 1,945 | 1,672 | 660 |
| S Other service activities | 10,611 | 3.5 | 1,006 | 4,244 | 2,209 | 2,250 | 902 |
| T Activities of households as employers | 1,429 | 0.5 | 422 | 593 | 151 | 151 | 112 |
| U Activities of extraterritorial organisations and bodies | 337 | 0.1 | 13 | 144 | 73 | 80 | 27 |
| X Industry unknown | 3,651 | 1.2 | 234 | 1,542 | 881 | 708 | 286 |
| Unemployed | 40,610 | | 3,505 | 15,293 | 8,473 | 9,160 | 4,179 |
| Unemployment rate, % | 11.9 | | 9.9 | 10.7 | 12.2 | 13.4 | 16.5 |

¹ Standard Industrial Classification 2008.

Source: Statistics Finland, Employment statistics.

| | Helsinki | Espoo | Vantaa | Kauniainen | Tampere | Turku | Oulu | Finland |
|------------------------|-------------|-------------|-------------|-------------|-------------|-------------|-------------|-------------|
| 15-74 year olds | 60.0 | 61.9 | 61.4 | 59.1 | 53.8 | 53.5 | 54.4 | 55.4 |
| 15-24 | 43.1 | 36.8 | 40.9 | 31.9 | 36.9 | 42.0 | 31.4 | 34.2 |
| 25-34 | 73.6 | 73.1 | 74.5 | 70.9 | 67.3 | 67.5 | 65.4 | 71.8 |
| 35-44 | 76.1 | 81.6 | 80.3 | 84.1 | 73.4 | 71.7 | 77.4 | 79.3 |
| 45-54 | 75.9 | 82.6 | 81.0 | 85.5 | 74.6 | 73.2 | 77.6 | 78.8 |
| 55-64 | 62.7 | 67.6 | 64.2 | 72.7 | 58.2 | 56.9 | 57.7 | 58.8 |
| 65-74 | 5.5 | 5.3 | 4.3 | 5.9 | 3.5 | 4.1 | 3.4 | 3.9 |
| Men | | | | | | | | |
| 15-74 year olds | 59.6 | 62.2 | 62.5 | 58.8 | 53.1 | 52.7 | 54.2 | 55.0 |
| 15-24 | 37.3 | 33.2 | 37.9 | 28.9 | 31.4 | 37.0 | 27.5 | 31.1 |
| 25-34 | 73.8 | 75.3 | 77.3 | 71.1 | 67.0 | 67.3 | 66.3 | 73.2 |
| 35-44 | 76.3 | 82.6 | 81.8 | 85.5 | 73.4 | 71.3 | 78.4 | 79.9 |
| 45-54 | 73.3 | 81.8 | 80.0 | 85.4 | 71.9 | 70.2 | 76.1 | 77.0 |
| 55-64 | 59.6 | 65.8 | 63.3 | 71.1 | 55.4 | 53.9 | 54.9 | 56.1 |
| 65-74 | 5.9 | 5.9 | 4.8 | 6.9 | 4.0 | 4.5 | 4.0 | 4.3 |
| Women | | | | | | | | |
| 15-74 year olds | 60.0 | 61.7 | 60.4 | 59.3 | 54.3 | 54.1 | 54.5 | 55.5 |
| 15-24 | 48.1 | 40.7 | 43.8 | 35.2 | 42.1 | 46.5 | 35.4 | 37.5 |
| 25-34 | 73.3 | 70.6 | 71.5 | 70.6 | 67.6 | 67.6 | 64.4 | 70.4 |
| 35-44 | 75.9 | 80.5 | 78.6 | 82.8 | 73.5 | 72.2 | 76.2 | 78.7 |
| 45-54 | 78.4 | 83.5 | 82.0 | 85.6 | 77.1 | 76.0 | 79.1 | 80.7 |
| 55-64 | 65.3 | 69.2 | 65.0 | 74.2 | 60.7 | 59.6 | 60.2 | 61.4 |
| 65-74 | 5.3 | 4.9 | 3.9 | 5.0 | 3.0 | 3.8 | 2.8 | 3.5 |

Source: Statistics Finland, Employment statistics.

| | Helsinki | Espoo | Vantaa | Kauniainen | Tampere | Turku | Oulu | Finland |
|--------------|----------|-------|--------|------------|---------|-------|------|---------|
| Total | | | | | | | | |
| 2000 | 8.3 | 5.9 | 7.2 | 4.2 | 14.0 | 13.9 | 13.7 | 12.5 |
| 2005 | 9.1 | 6.1 | 7.9 | 4.2 | 12.5 | 11.4 | 13.2 | 11.1 |
| 2010 | 7.8 | 5.8 | 8.5 | 4.1 | 13.8 | 12.9 | 12.8 | 10.3 |
| 2011 | 7.5 | 5.5 | 8.2 | 3.6 | 12.6 | 12.5 | 12.3 | 9.8 |
| 2012 | 8.2 | 6.4 | 8.7 | 4.7 | 14.1 | 13.4 | 13.8 | 10.7 |
| 2013 | 10.0 | 8.3 | 10.4 | 6.2 | 16.4 | 15.2 | 15.7 | 12.5 |
| 2014 | 11.6 | 9.7 | 11.4 | 6.9 | 17.4 | 16.8 | 17.2 | 13.8 |
| 2015 | 12.2 | 10.6 | 12.3 | 7.2 | 18.3 | 17.1 | 17.3 | 14.3 |
| 2016 | 11.9 | 10.1 | 11.7 | 7.2 | 17.7 | 16.3 | 16.6 | 13.5 |
| Men | | | | | | | | |
| 2000 | 9.6 | 6.4 | 7.9 | 4.5 | 13.3 | 14.4 | 13.4 | 12.3 |
| 2005 | 10.8 | 6.9 | 8.7 | 5.0 | 12.5 | 12.2 | 13.8 | 11.4 |
| 2010 | 9.5 | 6.6 | 9.9 | 4.8 | 15.4 | 16.1 | 15.0 | 11.9 |
| 2011 | 8.9 | 6.1 | 9.4 | 4.4 | 13.8 | 14.8 | 14.2 | 11.1 |
| 2012 | 9.7 | 7.2 | 9.9 | 5.4 | 15.9 | 16.0 | 16.4 | 12.4 |
| 2013 | 11.6 | 9.2 | 11.7 | 7.0 | 18.6 | 17.8 | 18.2 | 14.4 |
| 2014 | 13.3 | 10.6 | 12.5 | 7.9 | 19.9 | 19.7 | 19.9 | 15.8 |
| 2015 | 13.9 | 11.4 | 13.4 | 8.1 | 20.3 | 19.9 | 19.4 | 16.1 |
| 2016 | 11.9 | 10.1 | 11.7 | 7.2 | 17.7 | 16.3 | 16.6 | 13.5 |
| Women | | | | | | | | |
| 2000 | 7.1 | 5.4 | 6.5 | 3.9 | 14.7 | 13.4 | 14.1 | 12.7 |
| 2005 | 7.5 | 5.4 | 7.0 | 3.5 | 12.5 | 10.7 | 12.5 | 10.8 |
| 2010 | 6.3 | 5.0 | 7.1 | 3.4 | 12.1 | 9.9 | 10.4 | 8.8 |
| 2011 | 6.2 | 4.9 | 7.0 | 2.8 | 11.3 | 10.3 | 10.4 | 8.5 |
| 2012 | 6.9 | 5.6 | 7.5 | 4.0 | 12.3 | 10.8 | 11.1 | 9.0 |
| 2013 | 8.4 | 7.3 | 9.0 | 5.5 | 14.3 | 12.6 | 13.0 | 10.5 |
| 2014 | 10.0 | 8.8 | 10.3 | 6.1 | 15.0 | 14.0 | 14.5 | 11.7 |
| 2015 | 10.7 | 9.7 | 11.0 | 6.3 | 16.2 | 14.4 | 15.1 | 12.4 |
| 2016 | 10.6 | 9.4 | 11.0 | 6.7 | 15.9 | 14.3 | 14.9 | 12.1 |

Source: Statistics Finland, Employment Statistics.

Economic activities

List of diagrams and tables

| | | |
|------|--|----|
| 12.1 | Jobs by industry in Helsinki 2015–2016 | 70 |
| 12.2 | Jobs by industry in 2016 | 71 |
| 12.3 | Number of enterprises, staff and turnover by industry in Helsinki 2016 | 72 |

| Industry (SIC 2008) | 2015 Number | 2016 Number | % of the whole country |
|--|----------------|----------------|------------------------|
| All industries total | 379,518 | 388,005 | 17.1 |
| A Agriculture, forestry and fishing | 479 | 452 | 0.7 |
| B Mining and quarrying | 10 | 15 | 0.3 |
| C Manufacturing | 16,367 | 16,356 | 5.7 |
| D Electricity, gas, steam and air conditioning supply | 1,723 | 2,006 | 17.1 |
| E Water supply; sewerage, waste management | 797 | 974 | 8.9 |
| F Construction | 18,508 | 19,689 | 12.7 |
| G Wholesale and retail trade; repair of motor vehicles and motorcycles | 38,848 | 38,257 | 14.6 |
| H Transportation and storage | 18,186 | 18,392 | 14.4 |
| I Accommodation and food service activities | 17,741 | 37,185 | 22.1 |
| J Information and communication | 36,433 | 18,696 | 41.1 |
| K Financial and insurance activities | 18,946 | 19,276 | 43.2 |
| L Real estate activities | 5,381 | 5,445 | 25.4 |
| M Professional, scientific and technical activities | 37,431 | 39,307 | 29.6 |
| N Administrative and support service activities | 1,347 | 33,584 | 20.2 |
| O Public administration and defence; compulsory social security | 28,054 | 28,087 | 24.8 |
| P Education | 24,242 | 24,025 | 15.4 |
| Q Human health and social work activities | 53,053 | 54,141 | 14.0 |
| R Arts, entertainment and recreation | 11,021 | 11,099 | 24.9 |
| S Other service activities | 15,605 | 15,467 | 23.8 |
| T Activities of households as employers | 1,381 | 1,425 | 11.6 |
| U Activities of extraterritorial organisations and bodies | 434 | 476 | 83.2 |
| X Industry unknown | 3,594 | 3,651 | 13.3 |

Source: Statistics Finland, Employment statistics.

| | Jobs, total | Industry (SIC 2008) | | | | | | | Workplace self-sufficiency |
|-----------------------------------|------------------|---|---|------------------------------|---|---|--|--|----------------------------|
| | | Manufacturing and construction (C,F) | Trade, transport and accommodation (G-I) | Information and media (J) | Finance, real-estate, liberal professions and support services (K-N) | Public administration, education, health and social welfare services (O-Q) | Arts and culture, recreation and other services (R-S) | Other and unknown (A-B, D-E, T, U, X) | |
| Helsinki Metropolitan Area | 618,132 | 75,647 | 145,655 | 50,982 | 141,024 | 153,223 | 35,997 | 15,604 | 115.5 |
| Helsinki | 388,005 | 36,045 | 75,345 | 37,185 | 97,612 | 106,253 | 26,566 | 8,999 | 129.1 |
| Espoo | 117,007 | 16,772 | 26,635 | 11,870 | 25,227 | 27,449 | 5,225 | 3,829 | 91.6 |
| Vantaa | 110,784 | 22,760 | 43,452 | 1,896 | 17,826 | 18,221 | 3,961 | 2,668 | 107.6 |
| Kauniainen | 2,336 | 70 | 223 | 31 | 359 | 1,300 | 245 | 108 | 58.6 |
| Rest of Helsinki Region | 101,799 | 23,931 | 24,125 | 1,144 | 15,566 | 28,205 | 4,636 | 4,192 | 70.1 |
| Hyvinkää | 19,321 | 5,234 | 4,408 | 199 | 2,997 | 5,242 | 738 | 503 | 95.3 |
| Järvenpää | 12,734 | 2,662 | 2,458 | 133 | 2,156 | 4,361 | 622 | 342 | 65.7 |
| Kerava | 11,959 | 2,769 | 3,315 | 196 | 1,862 | 2,743 | 645 | 429 | 74.6 |
| Kirkkonummi | 10,707 | 1,872 | 2,203 | 164 | 2,224 | 3,339 | 513 | 392 | 60.1 |
| Nurmijärvi | 6,064 | 1,021 | 1,616 | 61 | 733 | 1,868 | 265 | 500 | 65.6 |
| Mäntsälä | 12,008 | 3,031 | 3,123 | 107 | 1,565 | 3,081 | 536 | 565 | 61.6 |
| Pornainen | 1,107 | 205 | 226 | 11 | 163 | 313 | 58 | 131 | 46.4 |
| Sipoo | 5,697 | 1,248 | 1,230 | 48 | 907 | 1,633 | 293 | 338 | 60.2 |
| Tuusula | 14,116 | 3,900 | 3,882 | 127 | 1,939 | 3,187 | 548 | 533 | 78.4 |
| Vihti | 8,086 | 1,989 | 1,664 | 98 | 1,020 | 2,438 | 418 | 459 | 61.7 |
| Helsinki Region | 719,931 | 99,578 | 169,780 | 52,126 | 156,590 | 181,428 | 40,633 | 19,796 | 105.8 |
| Tampere | 116,748 | 20,767 | 22,538 | 8,623 | 22,247 | 34,164 | 5,662 | 2,747 | 121.8 |
| Turku | 97,273 | 15,157 | 20,161 | 3,843 | 18,681 | 32,451 | 4,612 | 2,368 | 124.4 |
| Oulu | 85,288 | 15,369 | 15,636 | 4,218 | 14,713 | 28,692 | 3,778 | 2,882 | 104.6 |
| Finland as a whole | 2,275,679 | 442,317 | 473,736 | 90,420 | 365,264 | 656,999 | 109,764 | 137,179 | 100.0 |

NOTE: The statistics comply with the district division of 1 Jan. 2015. Data from merged municipalities have been combined.

Source: Statistics Finland, "Kaupunki- ja seutuindikaattorit", i.e. urban and regional indicator database.

| Industry (SIC 2008) | Enterprises | | Staff | | Turnover ¹ | |
|---|---------------|------------|----------------|------------|-----------------------|------------|
| | | % | | % | | % |
| Total | 45,934 | 100 | 254,553 | 100 | 79,753 | 100 |
| C Manufacturing | 1,445 | 3.1 | 16,769 | 6.6 | 13,935 | 17.5 |
| D Electricity, gas, steam and air conditioning supply | 84 | 0.2 | 1,861 | 0.7 | 2,672 | 3.4 |
| E Water supply; sewerage, waste management | 50 | 0.1 | 913 | 0.4 | 412 | 0.5 |
| F Construction | 3,021 | 6.6 | 20,305 | 8.0 | 5,181 | 6.5 |
| G Wholesale and retail trade | 5,812 | 12.7 | 35,196 | 13.8 | 26,509 | 33.2 |
| H Transportation and storage | 1,784 | 3.9 | 17,021 | 6.7 | 3,082 | 3.9 |
| I Accommodation and food service activities | 1,868 | 4.1 | 14,417 | 5.7 | 1,602 | 2.0 |
| J Information and communication | 3,427 | 7.5 | 33,549 | 13.2 | 10,417 | 13.1 |
| K Financial and insurance activities | 2,914 | 6.3 | 19,654 | 7.7 | .. | .. |
| L Real estate activities | 4,487 | 9.8 | 5,228 | 2.1 | 4,286 | 5.4 |
| M Professional, scientific and technical activities | 9,206 | 20.0 | 30,095 | 11.8 | 5,397 | 6.8 |
| N Administrative and support service activities | 2,133 | 4.6 | 37,975 | 14.9 | 3,663 | 4.6 |
| P Education | 764 | 1.7 | 2,002 | 0.8 | 244 | 0.3 |
| Q Human health and social work activities | 3,135 | 6.8 | 11,061 | 4.3 | 1,196 | 1.5 |
| R Arts, entertainment and recreation | 1,711 | 3.7 | 3,498 | 1.4 | 680 | 0.9 |
| S Other service activities | 2,930 | 6.4 | 4,797 | 1.9 | 398 | 0.5 |
| A-B, T, U, X Other or unknown | 1,163 | 2.5 | 212 | 0.1 | 48 | 0.1 |

¹ Due to rounding off the figures in the turnover column may not add up exactly to the total turnover figure.

Source: Statistics Finland's Business Register.

Income and consumption

List of diagrams and tables

| | | |
|------|---|----|
| 13.1 | Income recipients and income by income bracket in Helsinki 2016 | 74 |
| 13.2 | Income recipients by age and gender 1995–2016..... | 75 |
| 13.3 | Income subject to state taxation on average by gender and age of income recipient 2012–2016 | 76 |
| 13.4 | State taxable income of various kinds of households 2016..... | 76 |

| Income,bracket | Income recipients | | | Income subject to state taxation,share,% | | |
|--|-------------------|--------------|----------------|--|-------------------|------------------|
| | Persons | % | Accumulation,% | Total | Earned income % | Capital income % |
| -5,000 | 51,430 | 9.5 | 9.5 | 0.5 | 0.5 | 0.5 |
| 5,000-10,000 | 52,762 | 9.7 | 19.2 | 2.3 | 2.4 | 0.8 |
| 10,000-15,000 | 50,256 | 9.3 | 28.5 | 3.3 | 3.5 | 1.0 |
| 15,000-20,000 | 49,130 | 9.1 | 37.5 | 4.5 | 4.8 | 1.3 |
| 20,000-25,000 | 46,741 | 8.6 | 46.2 | 5.6 | 5.9 | 1.7 |
| 25,000-30,000 | 47,928 | 8.8 | 55.0 | 7.0 | 7.4 | 2.0 |
| 30,000-35,000 | 46,596 | 8,6 | 63,6 | 8,0 | 8,5 | 2,3 |
| 35,000-40,000 | 39,955 | 7.4 | 71.0 | 7.9 | 8.4 | 2.5 |
| 40,000-50,000 | 57,285 | 10.6 | 81.5 | 13.5 | 14.2 | 5.2 |
| 50,000-60,000 | 33,648 | 6.2 | 87.7 | 9.7 | 10.1 | 5.2 |
| 60,000-80,000 | 33,859 | 6.2 | 94.0 | 12.3 | 12.5 | 9.0 |
| 80,000-100,000 | 14,267 | 2.6 | 96.6 | 6.7 | 6.7 | 6.9 |
| 100,000- | 18,352 | 3.4 | 100.0 | 18.8 | 15.0 | 61.4 |
| Total | 542,209 | 100.0 | | 100.0 | 100.0 | 100.0 |
| Income,1000,euro | | | | 18,911.890 | 17,364.975 | 1,546.915 |
| Share of income subject to state taxation | | | | 100 | 92 | 8 |

Source: Statistics Finland's statistics on Income subject to state taxation.

| | Age, years | | | | | | | Total |
|--------------|------------|--------|---------|--------|--------|--------|---------|---------|
| | -19 | 20–24 | 25–34 | 35–44 | 45–54 | 55–64 | 65– | |
| Total | | | | | | | | |
| 1995 | 23,232 | 31,966 | 96,182 | 79,100 | 78,356 | 50,106 | 76,802 | 435,744 |
| 2000 | 28,905 | 39,489 | 97,666 | 85,943 | 81,652 | 58,825 | 78,061 | 470,541 |
| 2005 | 33,361 | 39,270 | 97,157 | 85,701 | 75,864 | 73,453 | 81,139 | 485,945 |
| 2010 | 25,306 | 41,680 | 106,401 | 79,082 | 77,786 | 74,873 | 91,050 | 496,178 |
| 2014 | 24,260 | 43,918 | 114,032 | 84,859 | 80,512 | 71,007 | 105,808 | 524,396 |
| 2016 | 24,295 | 42,602 | 119,646 | 91,883 | 80,731 | 72,496 | 110,556 | 542,209 |
| % | 4.5 | 7.9 | 22.1 | 16.9 | 14.9 | 13.4 | 20.4 | 100 |
| Men | | | | | | | | |
| 1995 | 11,786 | 14,678 | 46,965 | 38,179 | 36,477 | 22,623 | 24,697 | 195,405 |
| 2000 | 14,560 | 18,047 | 47,945 | 42,490 | 37,836 | 26,451 | 26,603 | 213,932 |
| 2005 | 16,897 | 17,485 | 48,032 | 42,671 | 35,731 | 33,094 | 29,072 | 222,982 |
| 2010 | 12,471 | 18,711 | 52,347 | 40,098 | 37,420 | 33,537 | 34,288 | 228,872 |
| 2014 | 11,932 | 19,611 | 55,963 | 44,009 | 39,286 | 32,289 | 41,051 | 244,141 |
| 2016 | 11,836 | 19,190 | 58,581 | 47,757 | 39,897 | 33,227 | 43,444 | 253,932 |
| % | 4.7 | 7.6 | 23.1 | 18.8 | 15.7 | 13.1 | 17.1 | 100 |
| Women | | | | | | | | |
| 1995 | 11,446 | 17,288 | 49,217 | 40,921 | 41,879 | 27,483 | 52,105 | 240,339 |
| 2000 | 14,345 | 21,442 | 49,721 | 43,453 | 43,816 | 32,374 | 51,458 | 256,609 |
| 2005 | 16,464 | 21,785 | 49,125 | 43,030 | 40,133 | 40,359 | 52,067 | 262,963 |
| 2010 | 12,835 | 22,969 | 54,054 | 38,984 | 40,366 | 41,336 | 56,762 | 267,306 |
| 2014 | 12,328 | 24,307 | 58,069 | 40,850 | 41,226 | 38,718 | 64,757 | 280,255 |
| 2016 | 12,459 | 23,412 | 61,065 | 44,126 | 40,834 | 39,269 | 67,112 | 288,277 |
| % | 4.3 | 8.1 | 21.2 | 15.3 | 14.2 | 13.6 | 23.3 | 100 |

Source: Statistics Finland's Statistics on income and assets.

13.3

Income subject to state taxation on average by gender and age of income recipient 2012-2016

| | Age, years | | | | | | | Total | Share of women's income of men's income % |
|------------------------------|------------|--------|--------|--------|--------|--------|--------|--------|---|
| | -19 | 20-24 | 25-34 | 35-44 | 45-54 | 55-64 | 65- | | |
| 2016 currency rate Euro/year | | | | | | | | | |
| Total | | | | | | | | | |
| 2012 | 3,181 | 14,295 | 29,613 | 41,680 | 46,280 | 43,145 | 30,910 | 33,664 | 76.1 |
| 2013 | 3,223 | 13,891 | 29,659 | 43,751 | 46,132 | 43,950 | 31,945 | 34,325 | 74.5 |
| 2014 | 2,948 | 13,729 | 28,944 | 42,349 | 46,173 | 45,069 | 33,051 | 34,294 | 75.0 |
| 2015 | 2,795 | 13,606 | 29,338 | 43,538 | 47,740 | 46,307 | 34,228 | 35,264 | 73.3 |
| 2015 | 2,795 | 13,606 | 29,338 | 43,538 | 47,740 | 46,307 | 34,228 | 35,264 | 73.3 |
| 2016 | 2,802 | 13,694 | 29,111 | 42,867 | 46,992 | 45,674 | 33,772 | 34,879 | 73.9 |
| Men | | | | | | | | | |
| 2012 | 3,099 | 14,264 | 32,318 | 47,110 | 51,419 | 49,824 | 40,023 | 38,625 | |
| 2013 | 3,186 | 13,850 | 32,572 | 51,166 | 51,150 | 50,396 | 40,995 | 39,767 | |
| 2014 | 2,837 | 13,620 | 31,355 | 48,381 | 51,858 | 52,172 | 42,768 | 39,577 | |
| 2015 | 2,724 | 13,558 | 32,039 | 50,129 | 54,226 | 53,718 | 44,857 | 41,107 | |
| 2016 | 2,716 | 13,691 | 31,871 | 49,344 | 52,838 | 52,842 | 43,755 | 40,496 | |
| Women | | | | | | | | | |
| 2012 | 3,261 | 14,321 | 26,985 | 35,967 | 41,456 | 37,673 | 25,261 | 29,380 | |
| 2013 | 3,257 | 13,926 | 26,851 | 35,846 | 41,002 | 38,618 | 26,204 | 29,608 | |
| 2014 | 3,056 | 13,817 | 26,621 | 35,850 | 40,756 | 39,156 | 26,889 | 29,692 | |
| 2015 | 2,864 | 13,645 | 26,752 | 36,383 | 41,498 | 40,070 | 27,406 | 30,151 | |
| 2016 | 2,885 | 13,696 | 26,464 | 35,858 | 41,281 | 39,609 | 27,309 | 29,932 | |

Source: Statistics Finland's Statistics on Income and Assets.

13.4

State taxable income of various kinds of households 2016

| | Household-dwelling units | | Income subject to state taxation | | | Index |
|--|--------------------------|--------------------|----------------------------------|------------------|------------|-------|
| | Number | Total, 1,000 euro | Per household-dwelling unit euro | Per person, euro | | |
| Total | 325,319 | 183,770.670 | 56,489 | 30,030 | 100 | |
| 1-member household | 156,554 | 50,288.286 | 32,122 | 32,122 | 107 | |
| Married/unmarried couple without children or at least 2 persons (not a family) | 88,808 | 66,635.784 | 75,034 | 36,484 | 121 | |
| Married/Unmarried couple with children | 49,778 | 50,786.072 | 102,025 | 27,276 | 91 | |
| Married/Unmarried couple with children and other members | 1,704 | 2,296.928 | 134,796 | 27,125 | 90 | |
| Single-parent family | 22,821 | 9,126.093 | 39,990 | 16,089 | 54 | |
| Others | 5,654 | 4,637.508 | 82,022 | 21,684 | 72 | |

Source: Statistics Finland.

Justice and public safety

List of diagrams and tables

| | | |
|------|--|----|
| 14.1 | Offences known to the police in Helsinki Police District 1995–2017 | 78 |
| 14.2 | Fines and convictions at courts of first instance 2017 | 79 |
| 14.3 | Helsinki City Rescue Department's operation 2000–2017 | 79 |

14.1

Offences known to the police in Helsinki Police District 1995–2017

| | 1995 | 2000 | 2005 | 2010 | 2015 | 2017 |
|--|----------------|----------------|----------------|----------------|----------------|----------------|
| Total | 103,170 | 106,162 | 100,108 | 116,990 | 104,473 | 125,614 |
| All offences | 77,791 | 85,284 | 74,583 | 83,520 | 74,504 | 73,144 |
| % of the whole country | 18.4 | 18.8 | 17.3 | 19.4 | 18.0 | 18.7 |
| Crime against property | 58,912 | 64,700 | 49,874 | 56,245 | 47,023 | 44,345 |
| Crime against life and health | 4,887 | 5,047 | 5,450 | 6,783 | 6,294 | 5,896 |
| Sexual offences | 191 | 178 | 359 | 315 | 428 | 466 |
| Offences against justice, authorities and public order | 1,044 | 2,053 | 2,604 | 2,903 | 2,944 | 2,655 |
| Certain traffic offences | 3,189 | 4,745 | 6,896 | 5,695 | 4,479 | 4,986 |
| Other crimes | 9,568 | 8,561 | 9,400 | 11,579 | 13,336 | 14,796 |
| Endangering traffic safety hit-and-run, traffic (motoring) offences | 25,379 | 20,878 | 25,525 | 33,470 | 29,969 | 52,470 |
| Share of similar offences in the whole country % | 7.6 | 6.7 | 7.2 | 6.6 | 7.4 | 11.1 |

Source: Helsinki Police Authority and Statistics Finland, Justice, Yearbook of Justice Statistics.

14.2

Fines and convictions at courts of first instance 2017

| | Helsinki Total | Helsinki residents | Finland Total | Helsinki residents |
|--|-------------------|-----------------------|------------------|-----------------------|
| Total | 59,312 | 31,540 | 511,038 | 52,808 |
| Summary penal fee ¹ | 37,637 | 19,034 | 330,602 | 33,800 |
| Fine orders ² | 9,888 | 5,640 | 87,386 | 8,602 |
| Fines | 4,760 | 2,722 | 41,573 | 4,369 |
| Verdicts of guilty ³ | 7,027 | 4,144 | 51,477 | 6,037 |
| imprisonment | 884 | 488 | 4,812 | 723 |
| community service | 132 | 90 | 1,522 | 122 |
| supervisory sentence (electronic tag curfew) | 2 | 1 | 192 | 13 |
| probation | 1,598 | 917 | 12,205 | 1,311 |
| earlier conviction sufficient (Finnish Penal Code 7:6-7§§) | 73 | 31 | 443 | 64 |
| fines | 3,858 | 2,307 | 30,519 | 3,398 |
| mistrals | 56 | 40 | 341 | 52 |
| other punishments | 424 | 270 | 1,443 | 354 |

¹ Including also summary penal fees by courts of law.

² 1-31 Dec. 2016. A new Fines Act came into effect on 1 Dec. 2017.

³ Not including summary penal fees by courts of law.

Source: Statistics Finland.

| | 2000 | 2005 | 2010 | 2015 | 2017 |
|---------------------------------------|---------|--------|---------|---------|---------|
| Total,staff | 574 | 560 | 670 | 674 | 672 |
| of which rescue operation staff | 400 | 406 | 499 | 496 | 496 |
| Fire alarms | 4,399 | 3,754 | 4,461 | 3,478 | 3,849 |
| fire-fightings tasks (extinguishings) | 1,067 | 957 | 1,240 | 871 | 887 |
| other alarms | 3,332 | 2,797 | 3,221 | 2,607 | 2,962 |
| Rescue operation | 2,928 | 4,233 | 5,166 | 4,930 | 5,866 |
| traffic accidents | 305 | 354 | 917 | 750 | 762 |
| oil accidents | 385 | 282 | 349 | 305 | 309 |
| rescues | 179 | 245 | 177 | 186 | 261 |
| other | 2,059 | 3,352 | 3,723 | 3,689 | 4,534 |
| Ambulance transports | 34,706 | 36,882 | 44,861 | 54,596 | 61,489 |
| Fire inspections | 5,200 | 3,878 | 6,085 | 3,204 | 2,821 |
| Places in bomb shelter | 683,600 | .. | 819,700 | 867,878 | 886 283 |

Source: Helsinki City Rescue Department and RegionCD.

Elections

List of diagrams and tables

| | | |
|------|--|----|
| 15.1 | Municipal elections in Helsinki 2000–2017..... | 82 |
| 15.2 | Parliamentary elections in Helsinki 2007–2015..... | 82 |
| 15.3 | Presidential elections in Helsinki 2006–2018..... | 83 |
| 15.4 | EU Parliament elections 2009 and 2014..... | 83 |

15.1

Municipal elections in Helsinki 2000–2017

| | 2000 | 2004 | 2008 | 2012 | 2017 |
|---|---------|---------|---------|---------|---------|
| Persons entitled to vote | 452,271 | 459,428 | 474,209 | 499,692 | 527,982 |
| % of persons entitled to vote in Finland | 11.3 | 11.2 | 11.3 | 11.6 | 12.0 |
| Persons who voted in Helsinki | 230,336 | 262,362 | 279,181 | 286,787 | 326,351 |
| Voting turnout % ¹ | 50.9 | 57.1 | 58.9 | 57.4 | 61.8 |
| Voting turnout % in municipal elections in Finland ¹ | 55.9 | 58.6 | 61.2 | 58.3 | 58.9 |
| Ballots rejected in Helsinki | 1,289 | 1,457 | 1,387 | 1,420 | 1,126 |
| Percentage ² | 0.6 | 0.6 | 0.5 | 0.5 | 0.3 |
| Percentage in the whole country ² | 0.8 | 0.6 | 0.6 | 0.5 | 0.6 |

¹ Of those entitled to vote.

² Of ballots submitted.

Source: Statistics Finland.

15.2

Parliamentary elections in Helsinki 2007–2015

| | 2007 ¹ | 2007 ² | 2011 ¹ | 2011 ² | 2015 ¹ | 2015 ² |
|---|-------------------|-------------------|-------------------|-------------------|-------------------|-------------------|
| Persons entitled to vote | 441,229 | 40,073 | 454,861 | 44,720 | 472,893 | 48,982 |
| % of persons entitled to vote in Finland | 10.3 | 19.2 | 10.4 | 19.6 | 11.2 | 20.2 |
| Men | 199,760 | 14,383 | 207,028 | 16,514 | 216,144 | 18,303 |
| Women | 241,469 | 25,690 | 247,833 | 28,206 | 256,749 | 30,679 |
| Persons who voted in Helsinki | 313,859 | 4,386 | 343,523 | 6,446 | 355,359 | 6,888 |
| Voting turnout % ³ | 71.1 | 10.9 | 75.5 | 14.4 | 75.1 | 14.1 |
| Voting turnout % in municipal elections in Finland ³ | 67.9 | 8.6 | 70.5 | 10.6 | 70.1 | 10.1 |
| Ballots rejected in Helsinki | 3,321 | .. | 2,084 | .. | 2,372 | .. |
| Percentage ⁴ | 1.1 | .. | 0.6 | .. | 0.7 | .. |
| Percentage in the whole country ⁴ | 0.7 | .. | 0.6 | .. | 0.5 | .. |

¹ Finnish citizens resident in Finland. For more details, see www.vaalit.fi.

² Finnish citizens resident abroad. For more details, see www.vaalit.fi.

³ Of those entitled to vote.

⁴ Of ballots submitted.

Source: Statistics Finland.

15.3

Presidential elections in Helsinki 2000–2018

| | 2006 | | 2012 | | 2018 |
|-------------------------------|-------------|--------------------|-------------|--------------------|-------------|
| | First round | Second round round | First round | Second round round | First round |
| Persons entitled to vote | 478,589 | 478,589 | 502,960 | 502,960 | 535,967 |
| In Helsinki ¹ | 439,144 | 439,144 | 457,588 | 457,588 | 484,684 |
| Abroad ² | 39,445 | 39,445 | 45,372 | 45,372 | 51,283 |
| Persons who voted | 349,649 | 356,786 | 358,412 | 350,718 | 358,681 |
| In Helsinki ¹ | 335,229 | 350,856 | 350,317 | 342,487 | 349,687 |
| Voting turnout % ³ | 76.3 | 79.9 | 76.6 | 74.8 | 72.1 |
| Abroad ² | 5,420 | 5,930 | 8,095 | 8,231 | 8,994 |
| Voting turnout % ³ | 13.7 | 15.0 | 17.8 | 18.1 | 17.5 |

¹ Persons in Helsinki's population register. For more details, see www.vaalit.fi

² Persons not resident but entitled to vote in Helsinki. For more details, see www.vaalit.fi

³ Of those entitled to vote.

Source: Statistics Finland.

15.4

EU Parliament elections 2009 and 2014

| | 2009 | | 2014 | |
|-------------------------------|----------|-----------|----------|-----------|
| | Helsinki | Finland | Helsinki | Finland |
| Persons entitled to vote | 489,968 | 4,332,457 | 516,194 | 4,440,297 |
| Persons who voted | 230,729 | 1,672,434 | 250,194 | 1,736,618 |
| Voting turnout % ¹ | 47.1 | 38.6 | 48.5 | 39.1 |
| Ballot papers rejected | 926 | 7,603 | 1,255 | 10,435 |
| Voting turnout % ² | 0.4 | 0.5 | 0.5 | 0.6 |

¹ Of those entitled to vote.

² Of ballots submitted.

Source: Statistics Finland.





Helsinki