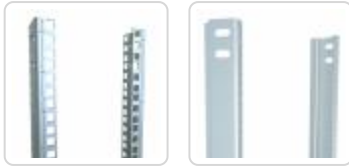
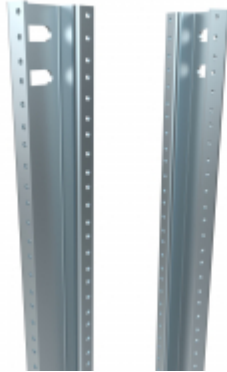




Quality Products. Service Excellence.

Mounting Rack Rails *CCR Series*

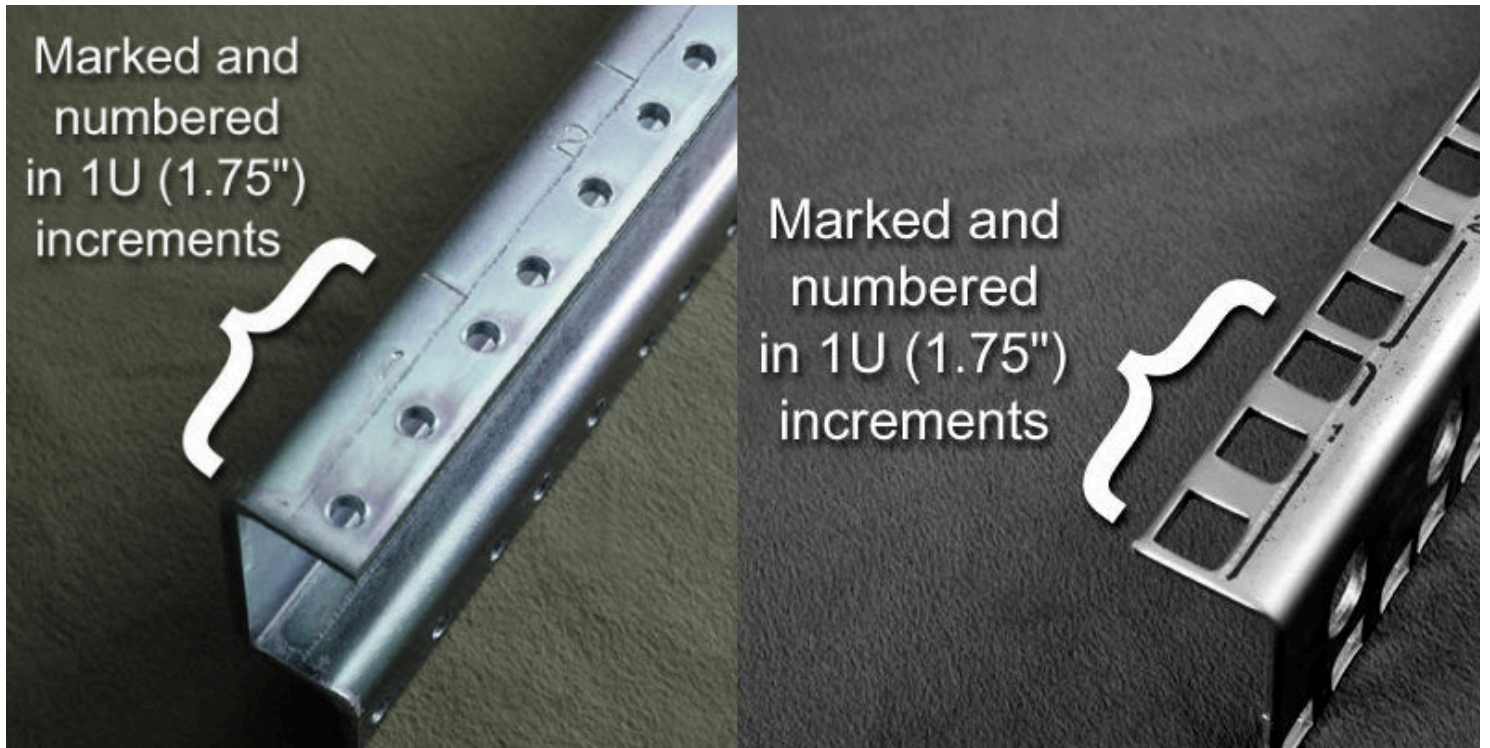
For use with the C2 and REFK Series



Features

- Constructed in 10-gauge steel
- Sold in pairs
- EIA compliant mounting rails:
 - Drilled and tapped 10-32 holes (CCR)
 - Square hole punched for cage nuts (CPR)
- Rails come stamped and numbered in 1U (1.75") increments.
- Combination front and side of rail mounting provide the ability to affix rack mounted and fixed accessories.
 - Note this mounting location prevents the installation of server rail slides.
- Bolts vertically in cabinets.
- Compatible with **C2** and **REFK** cabinets.
- **Strut mounting hardware** included. Rack mounting hardware is sold separately.
- Finished in **Zinc steel plate**.
- TAA-compliant for GSA Schedule purchases.
- RoHS Compliant.
- Manufactured in North America within an ISO 9001:2015 certified facility.





Part No. Tapped Rail	Part No. Square Hole L-Rail	Rack Units	Height	Overall Dimensions	
				Width	Depth
CCR22TZPL	-	13U	22.75	0.86	2.45
CCR35TZPL	CPR35SZPL	20U	35.00	0.86	2.45
CCR42TZPL	CPR42SZPL	24U	42.00	0.86	2.45
CCR49TZPL	-	28U	49.00	0.86	2.45
CCR54TZPL	-	31U	54.00	0.86	2.45
CCR56TZPL	CPR56SZPL	32U	56.00	0.86	2.45
CCR63TZPL	CPR63SZPL	36U	63.00	0.86	2.45
CCR70TZPL	CPR70SZPL	40U	70.00	0.86	2.45
CCR77TZPL	CPR77SZPL	44U	77.00	0.86	2.45
CCR78TZPL	CPR78SZPL	45U	78.75	0.86	2.45
CCR84TZPL	-	48U	84.00	0.86	2.45
CCR85TZPL	CPR85SZPL	49U	85.75	0.86	2.45

Data subject to change without notice

© 2024. Hammond Manufacturing Ltd. All rights reserved.