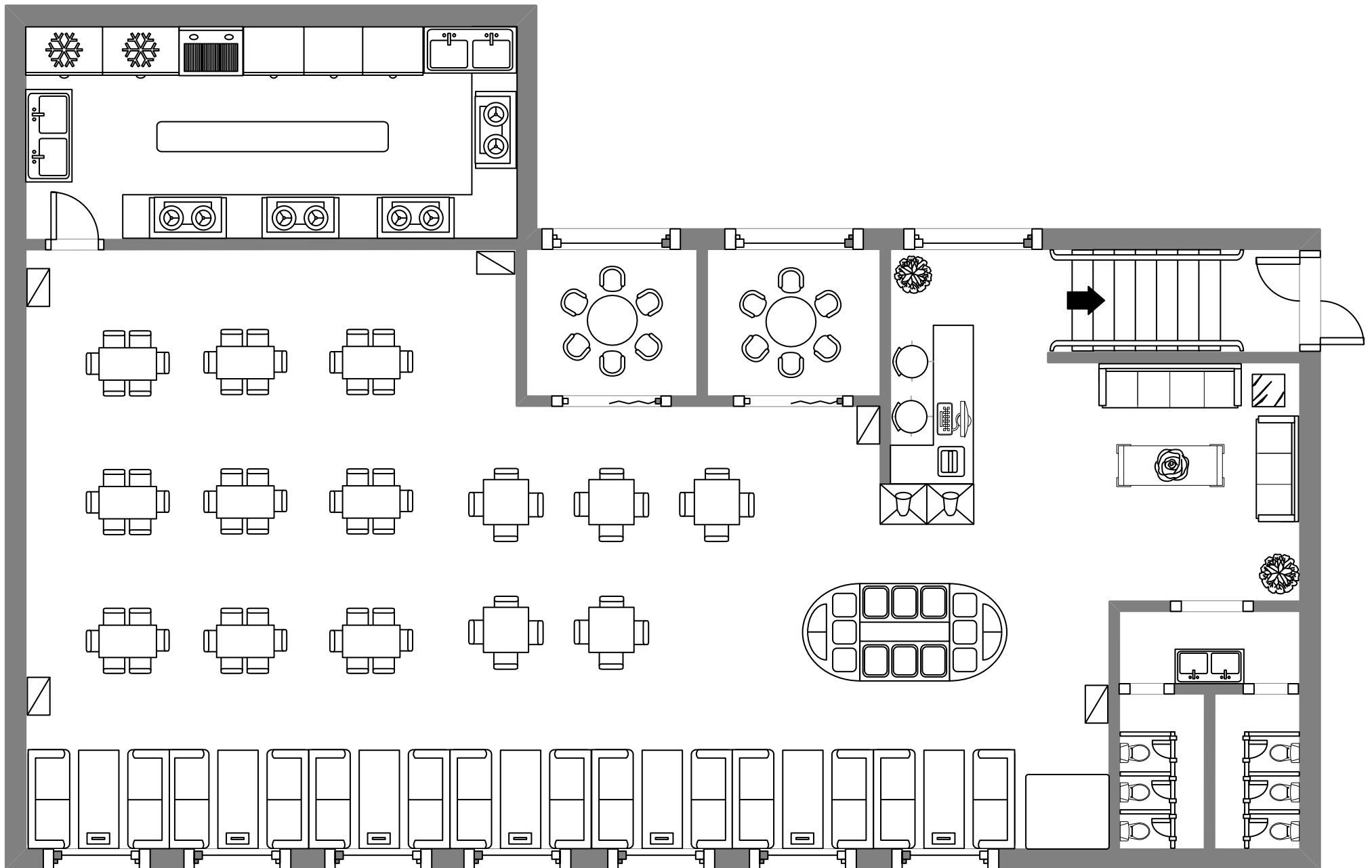


# Canteen Design Layout



A free customizable **canteen design layout** template is provided to download and print. Quickly get a head-start when creating your own canteen design layout with **EdrawMax**. You don't need to be professional in design, Edraw floor plan software does everything for you.

Employees and food service professionals should be able to move about freely in the canteen area. If the space is crammed with too much furniture and several equipment, it will be difficult to feel refreshed. To accommodate as many personnel as feasible, a suitable quantity of chairs and tables is required. Furthermore, choosing furniture that is adaptable - or that can be moved about simply - is preferable.