

About JY42KR



The JY42KR rescue boat is design and built according to the IMO "International Convention on Safety of sea 1974" and all its update amendments including the 1996 revision of Chapter III and the inception of the associated International Life-saving Appliance Code (LSA CODE). Every test meets the requirements about rigid rescue boat of IMO "Life-saving Appliances Test" and IMO Resolution MSC.81 (70).



Specifications:

Mould length	4.25m
Mould Breadth	1.72m
Mould depth	0.85m
Capacity	6 persons
Speed	>6 kts
Boat Weight (light)	474Kg
Boat Weight (fully loaded)	995Kg

Material

The hull is constructed by hand lay-up with G.R.P. material. The hull and the inner hull are separately laminated. The space between the hull and the inner hull is filled with polyurethane foam as buoyancy.

In order to increase the boat's corrosion-resistant performances, all fittings on this boat are made of stainless steel, aluminum, copper or galvanized steel.



Buoyancy and strength



The construction of the boat is designed according to relevant rules to ensure that the boat can handle any sea condition.

The polyurethane foam filled in the space between the hull and the inner hull provides sufficient buoyancy for the rescue boat to prevent the boat from sinking when it is damaged.

The JY42KR could also be used as a fireboat, if it's loaded with fireboat equipment.



Engine and steering system



The JY42KR rescue boat is powered by Mercury outboard engine.

Specifications:

Brand	MERCURY
Power	25Hp
Revolution	5800 rpm

The outboard motor is manual controlled/started.

The steering console of JY42KR rescue boat is located at the stern of the boat where the helmsman manually can operate the outboard engine.

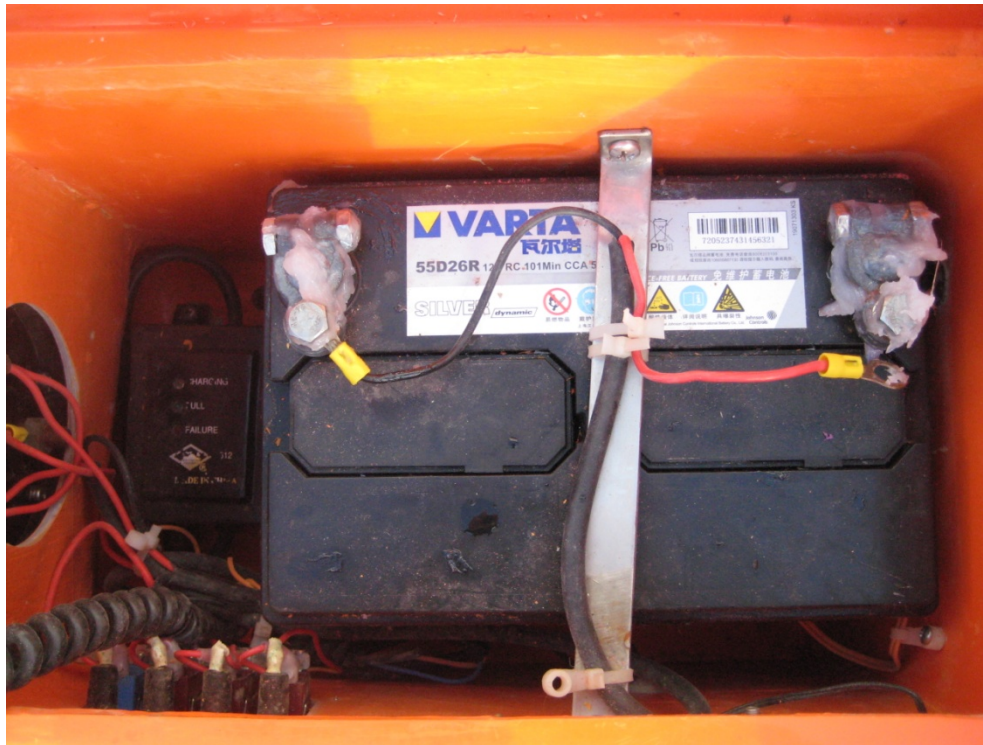
The magnetic compass and searchlight are located before the helmsman.

For detailed operation procedure of the outboard engine, please refer to the instruction manual supplied with the engine.



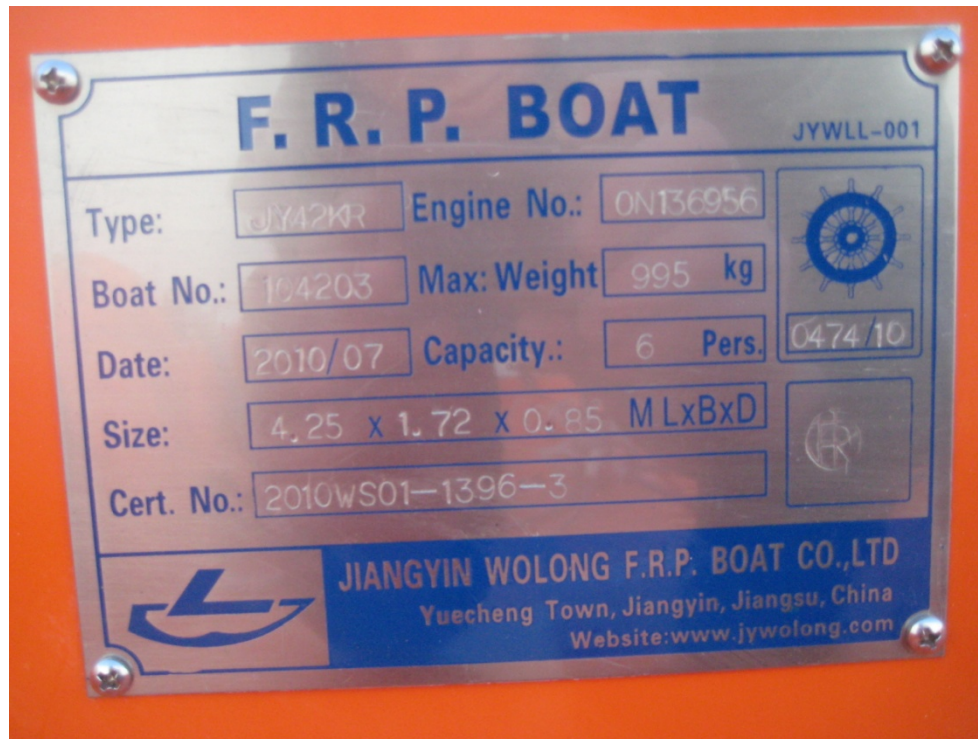
Electrical Equipment

The battery of the JY42KR can be charged by the mother ship with 42V AC.
All electrical equipment needs 12V, which is the battery voltage.



Test and certification

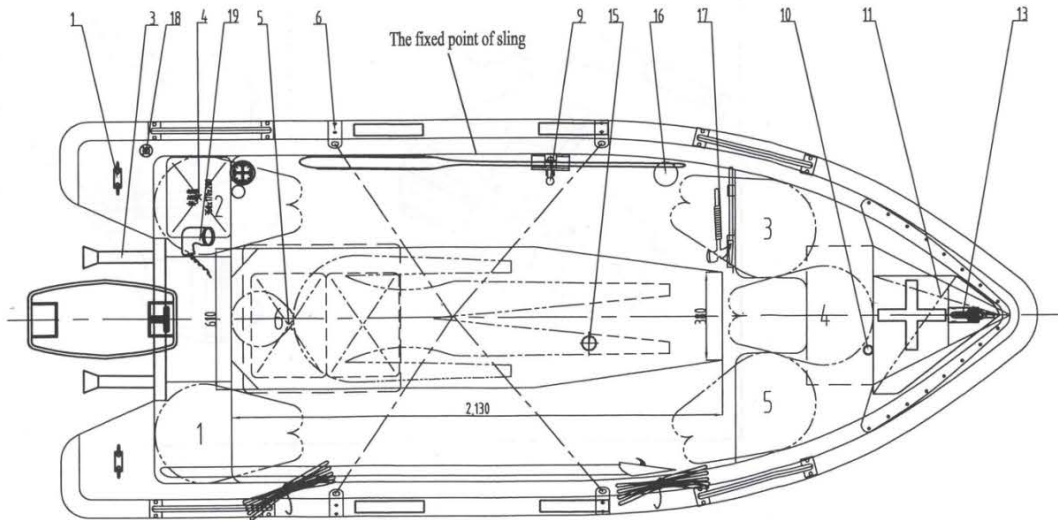
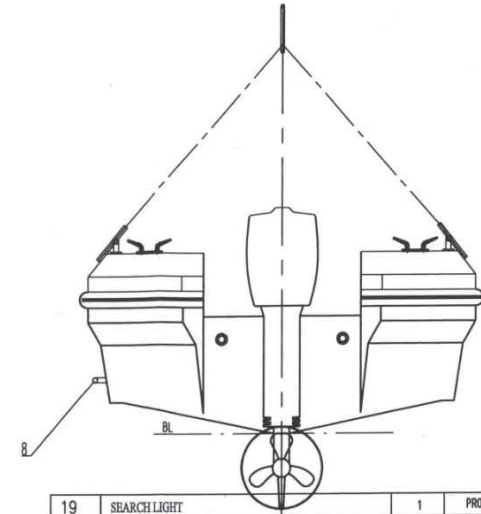
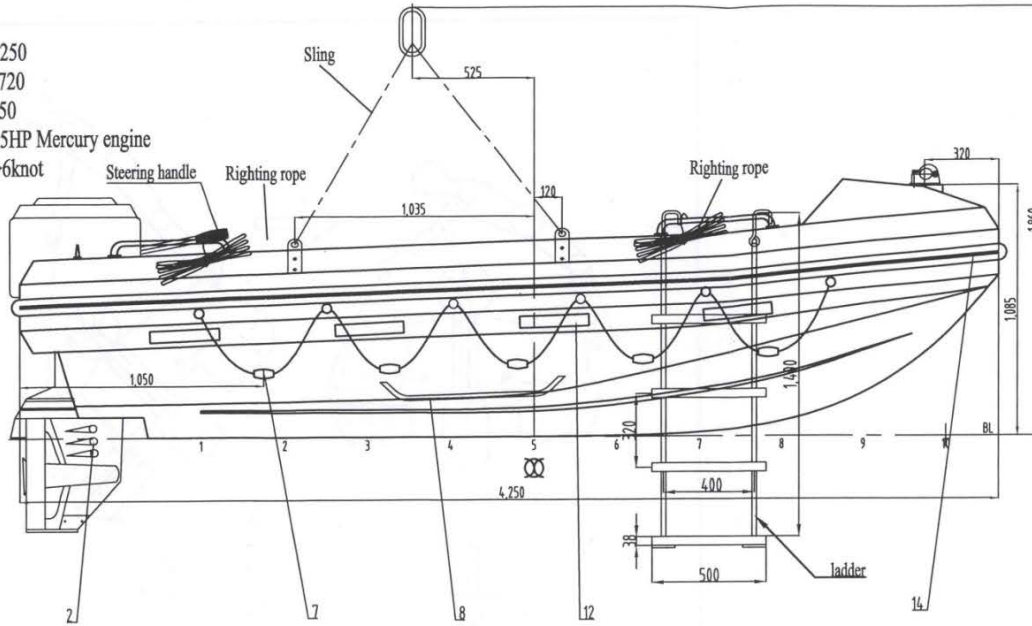
Before delivery, every boat will be tested according to our production test program in the factory in presence of surveyors and then, if it passed the test, the boat certification will be issued.



General arrangement

Main particulars

Length 4250
 Breadth mld 1720
 Depth mld 850
 Engine 25HP Mercury engine
 Speed >6knot



19	SEARCH LIGHT	1	PRO
18	POSITION LIGHT	1	PRO
17	HATCHET	1	PRO
16	DRAIN VALVE	1	ASS
15	FIRE EXTINGUISHER	1	PRO
14	FENDER	1	RUBBER
13	PAINTER RELEASE DEVICE	1	ASS
12	REFLECT LIGHT STRIP	16	PLASTIC
11	GOODS BOX	1	FRP
10	RADAR REFLECTOR	1	PRO
9	MANUAL PUMP	1	PLASTIC
8	RIGHTING UNIT	1	PRO
7	LIFELINE APPLIANCE	1	PRO
6	LIFTING DEVICE	4	ASS
5	OIL BOX	2	PRO
4	BATTERY BOX	1	PRO
3	AUTO. DRAIN VALVE	2	PRO
2	OUTBOARD MOTOR	1	FRP
1	FAIRLEADS	2	PRO
NO.	DESCRIPTION	QTY.	REMARK

NO.	DESCRIPTION	DRAWN	CHECKED	DATE
-----	-------------	-------	---------	------

Jiangyin Wolong FRP Boat Co., Ltd

TYPE	JY42KR RESCUE BOAT	DWG NO.	JY42KR-15(A)
DATE	August 27, 2010	TITLE	GENERAL ARRANGEMENT PLAN
DRAWN BY	Y.R.Hou	(For four point lifting)	
CHECKED BY	J.M.Zhu	TOTAL PAGES	1
APPROVED	J.G.Zhu	PAGE	1
SCALE	1:20	DRAWING SIZE: A3	
REV NO.	0		

Equipment list

NO.	NAME	MATERIAL	SUPPLY PER BOAT	REMARKS
1	PADDLE	WOOD 1.6M	2 PCS	
2	BUOYANT QUILTS WITH BUOYANT LINE		2 PCS	
3	TWO BOAT-HOOKS	WOOD FORGED (STEEL/GALV)	1 PC.	
4	BAILER		1 PC.	
5	BUCKET	PLASTIC	1 PC.	12 LTR
6	BUOYANT LINE		1 PC	50m
7	SEA ANCHOR		1 SET	
8	PAINTER		1 PC.	
9	HATCHET	FORGED STEEL/GALV	1 PC.	
10	SEARCHLIGHT		1 PC.	
11	WATERTIGHT THERMAL PROTECTIVE		2 PCS	
12	COMPASS		1 SET	
13	RADAR REFLECTOR		1 PC	
14	WATERTIGHT BOX WITH FIRST-AID	WATERPROOF	1 SET	
15	WHISTLE	PLASTIC	1 PC.	
16	WATERPROOF ELECTRIC TORCH	PLASTIC	1 PC.	WITH 2 SPARE BATTERY 1 SPARE BULB
17	FIRE EXTINGUISHER		1 PC.	
18	LADDER		1 SET	