

Supplementary material

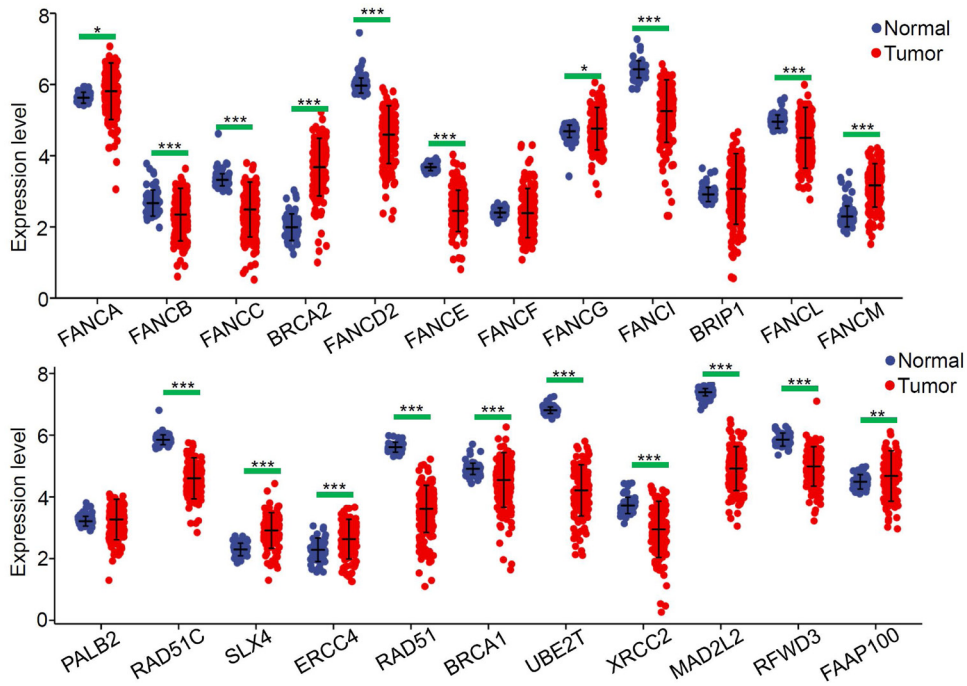


Figure S1: The expression difference between AML and controls for FA genes. Using the combined datasets within the GTEx and TCGA-LAML cohort, the expression difference of FA genes between the tumor and normal samples for FA genes was analyzed. A wilcox.test was conducted. * $p < 0.05$, ** $p < 0.01$, *** $p < 0.001$.

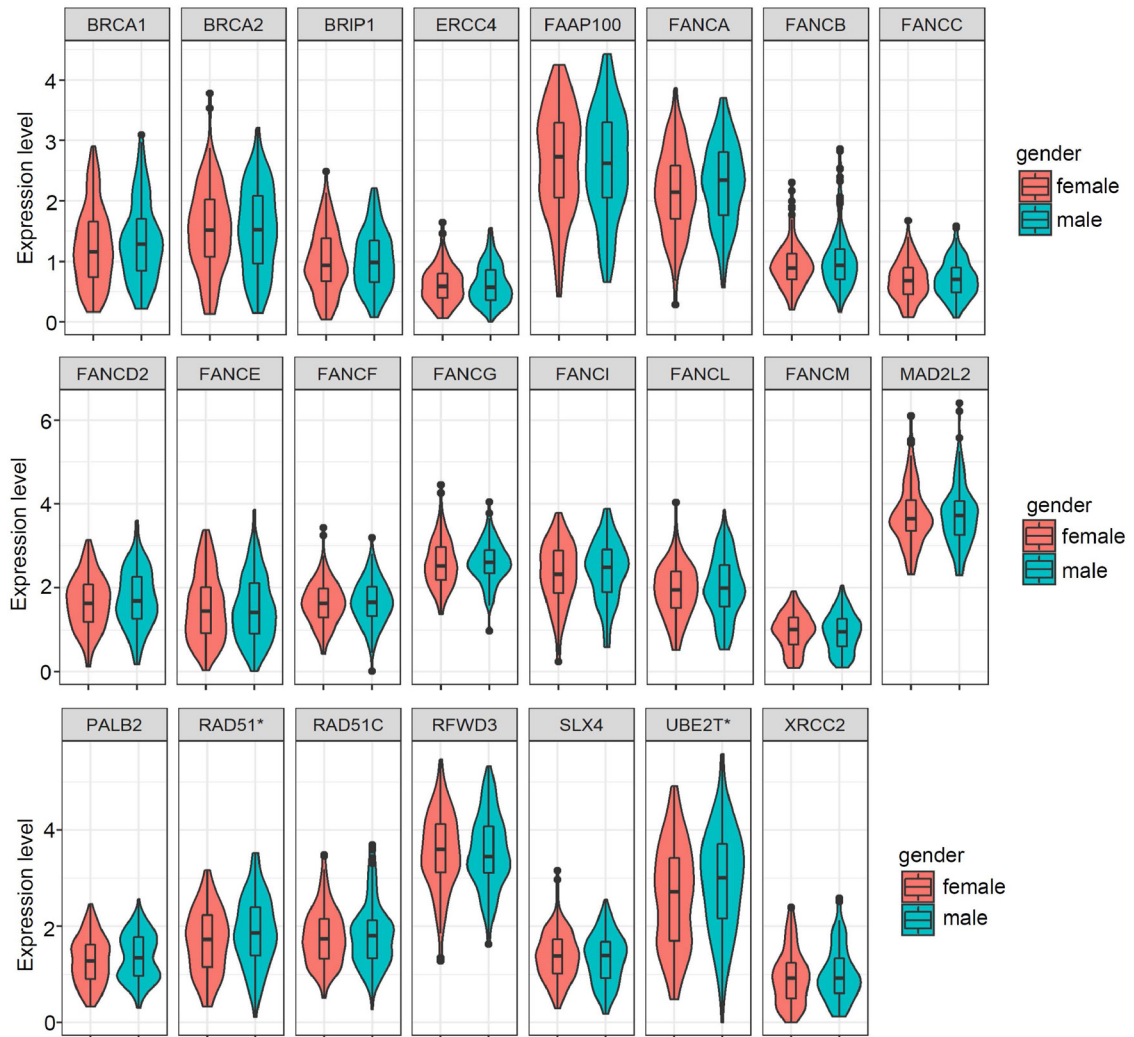


Figure S2: Correlation between FA gene expression and gender. Using data from the TARGET-AML cohort, we examined the expression differences of each FA gene between female and male groups. A wilcox.test was conducted. * $p < 0.05$.

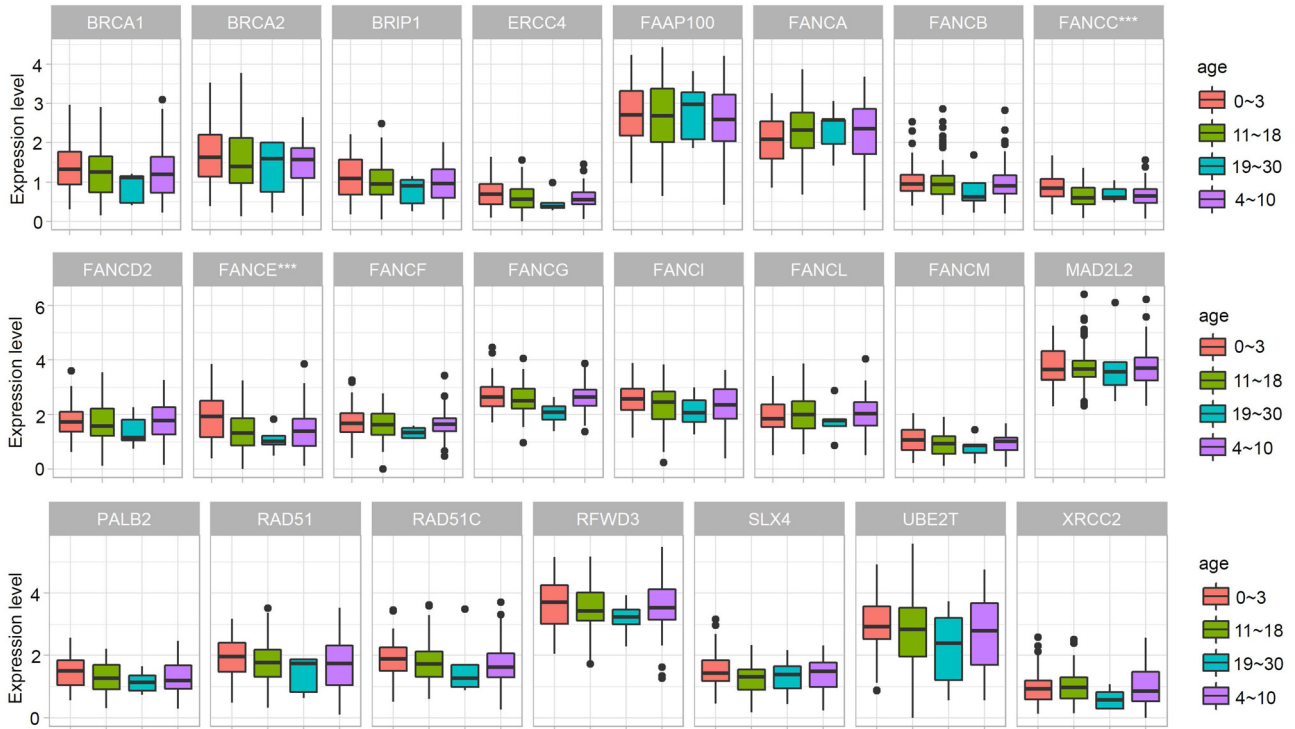


Figure S3: Correlation between FA gene expression and age. Using data from the TARGET-AML cohort, we investigated the variation in the expression of each FA gene across different age groups. Statistical analysis was conducted using a kruskal.test. *** $p < 0.001$.

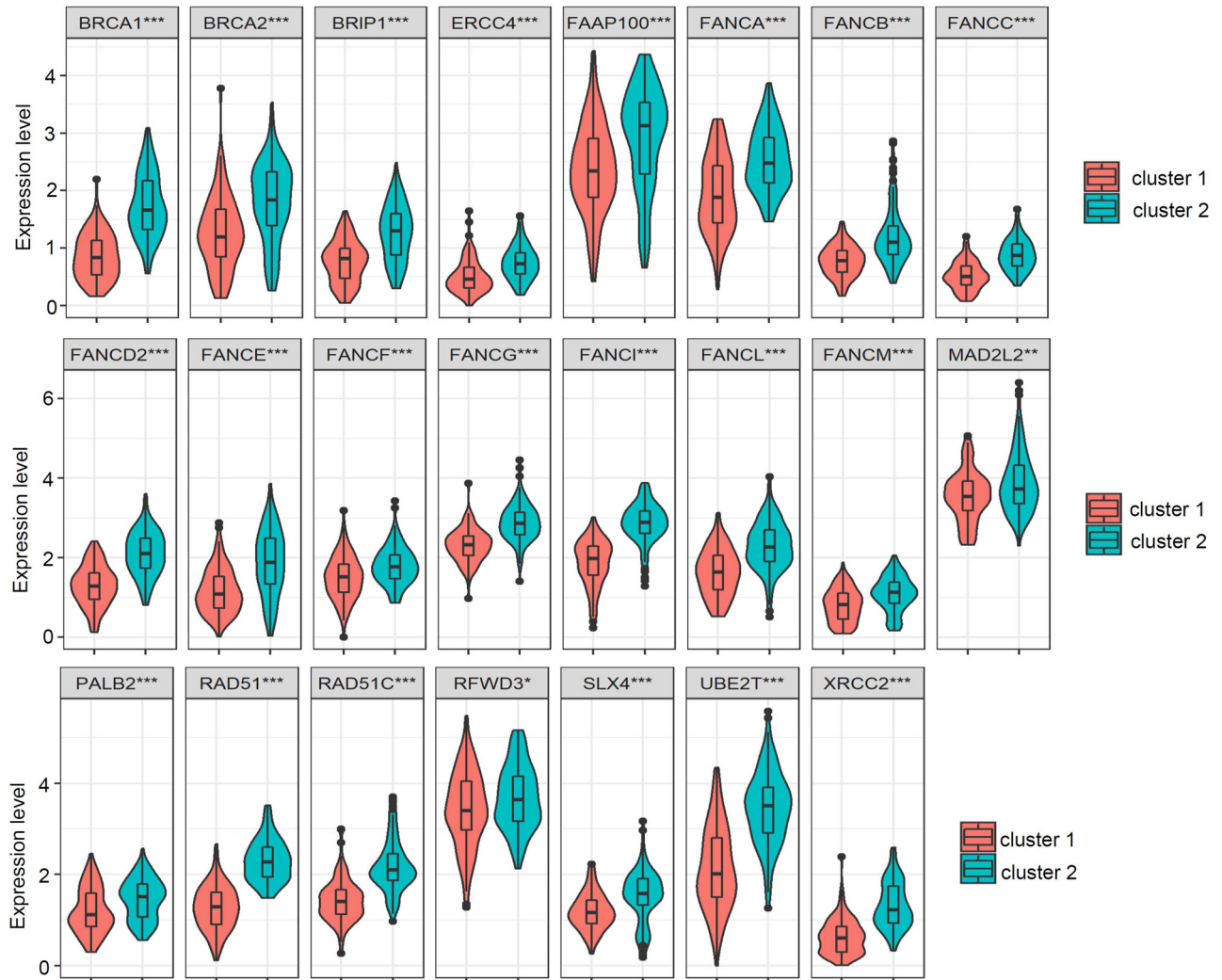


Figure S4: Expression difference of various FA genes between the two different clusters of the TARGET-AML cohort. A wilcox.test was conducted. * $p < 0.05$, ** $p < 0.01$, *** $p < 0.001$.