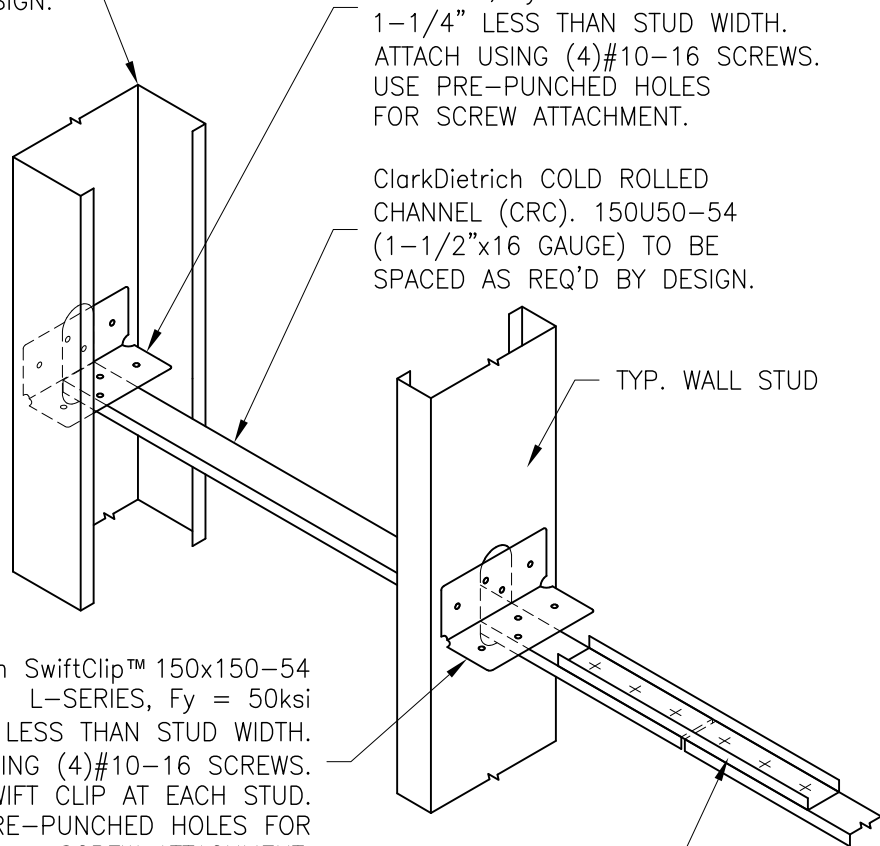


ClarkDietrich RedHeader PRO™  
JAMB STUD OR POST. MEMBER  
SIZE AS REQ'D PER DESIGN.

WHERE BRACING TERMINATES  
AT JAMB OR POST,  
USE SwiftClip™ 150x150-54  
L-SERIES,  $F_y = 50\text{ksi}$   
1-1/4" LESS THAN STUD WIDTH.  
ATTACH USING (4)#10-16 SCREWS.  
USE PRE-PUNCHED HOLES  
FOR SCREW ATTACHMENT.

ClarkDietrich COLD ROLLED  
CHANNEL (CRC). 150U50-54  
(1-1/2"x16 GAUGE) TO BE  
SPACED AS REQ'D BY DESIGN.



ClarkDietrich SwiftClip™ 150x150-54  
L-SERIES,  $F_y = 50\text{ksi}$   
1/4" LESS THAN STUD WIDTH.  
ATTACH USING (4)#10-16 SCREWS.  
PLACE SWIFT CLIP AT EACH STUD.  
USE PRE-PUNCHED HOLES FOR  
SCREW ATTACHMENT.

TYP. LATERAL BRACING SPLICE USE:  
(1)12" LONG CRC INVERTED OVER  
CENTER OF SPLICE w/(3)#10-16  
SCREWS ON EACH SIDE OF SPLICE.

THIS DETAIL IS NOT RECOMMENDED FOR  
WALL STUDS DEEPER THAN 8"

## REDHEADER PRO CONNECTION AT LATERAL BRACING

WITH CRC AND SwiftClips



Engineering Services: (877) 832-3206

Technical Services: (888) 437-3244

The CAD detail library is intended to provide general framing details only and does not replace the judgments and designs of a qualified architect and/or engineer. The details are provided as a starting tool to assist the user in creating and detailing cold-formed steel framing construction details. Each detail including accompanying text must be thoroughly evaluated and approved by a qualified architect or engineer. | Find over 500 CAD details at [cad.clarkdietrich.com](http://cad.clarkdietrich.com) | © Copyright 2023 ClarkDietrich