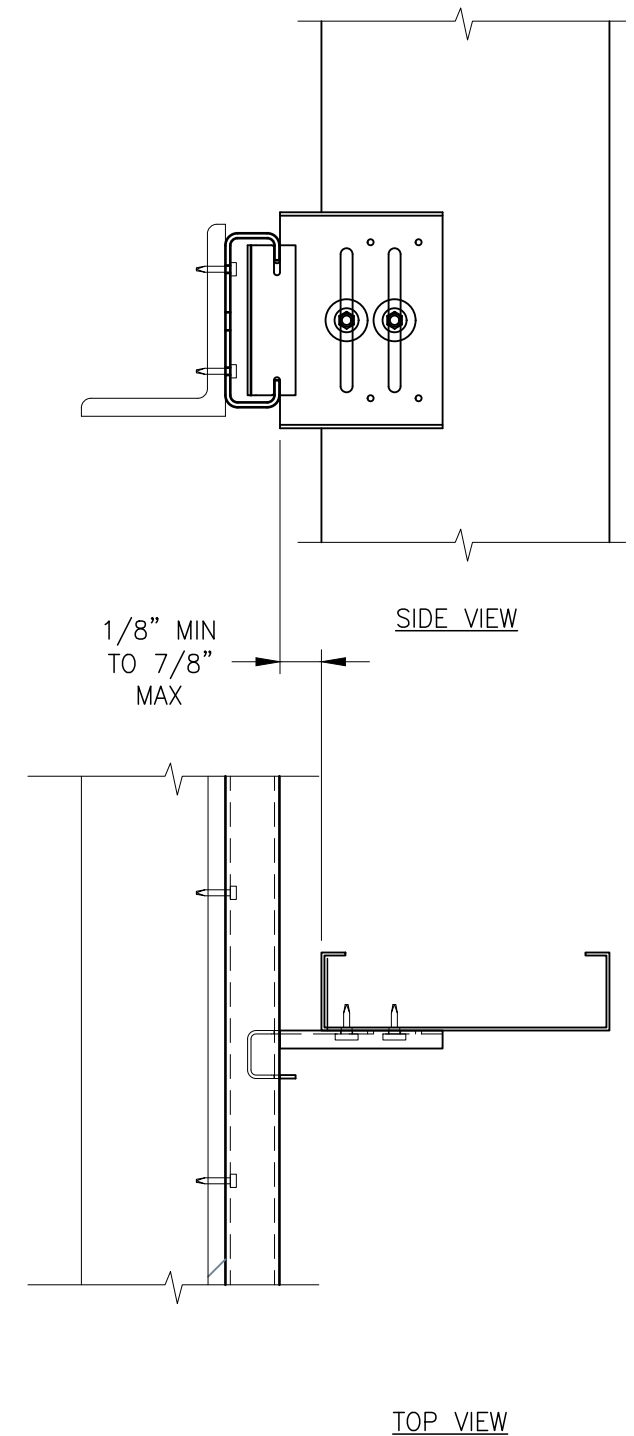


- INSTALLATION NOTE:**
 TO INSTALL CLIP INTO RAIL:
- START WITH CLIP PLACED HORIZONTAL
 - INSERT CLIP INTO RAIL
 - LINE UP SLOTS OF CLIP WITH RAIL RETURNS
 - ROTATE CLIP SO IT'S VERTICAL

ClarkDietrich DRIFT RAIL AND CLIP DRC3-68 OR DRC3-97 ATTACHED TO STUDS W/(2) PROPRIETARY SCREWS (PROVIDED W/CLIP) IN CENTER OF VERTICAL SLOTS. CLIP THICKNESS AS REQ'D BY DESIGN.

ClarkDietrich 12' DRIFT RAIL 12GA (97 MILS) ATTACH TO STRUCTURAL SYSTEM AT 6" O.C. AS REQ'D BY DESIGN.

STRUCTURAL STUDS. SIZE AND SPACING AS REQ'D BY DESIGN.



STUD CONNECTION W/DRC3-68 OR DRC3-97

ClarkDietrich DRIFT RAIL AND CLIP FOR 6" STUDS
 CURTAIN WALL BYPASS WITH DRIFT & VERTICAL DEFLECTION



Engineering Services: (877) 832-3206

Technical Services: (888) 437-3244

The CAD detail library is intended to provide general framing details only and does not replace the judgments and designs of a qualified architect and/or engineer. The details are provided as a starting tool to assist the user in creating and detailing cold-formed steel framing construction details. Each detail including accompanying text must be thoroughly evaluated and approved by a qualified architect or engineer. | Find over 500 CAD details at cad.clarkdietrich.com | © Copyright 2020 ClarkDietrich