

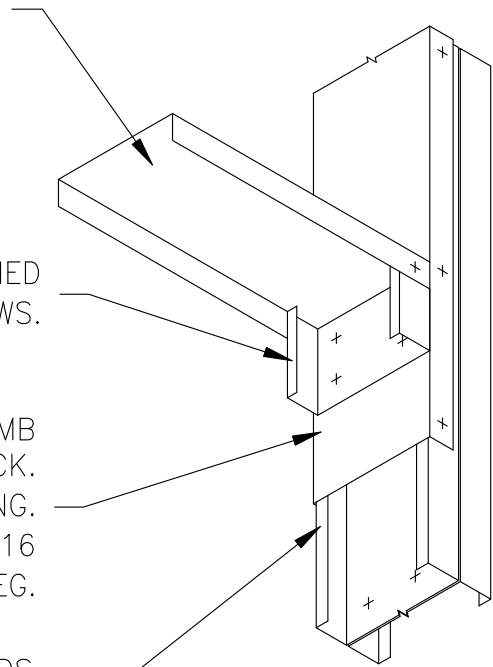
HEAD TRACK

BACK-TO-BACK JAMB STUDS.  
MEMBER SIZES & QUANTITY  
AS REQ'D PER DESIGN.

CAP OPENING SIDE OF JAMB  
WITH A SECTION OF TRACK.  
EXTEND TRACK 12" PAST TOP OF OPENING.  
ATTACHED TO JAMB w/(1)#10-16  
SCREW @ 16"o.c. IN EACH LEG.

6" LONG SECTION OF STUD ATTACHED  
TO JAMB w/(4)#10-16 SCREWS.

SILL/HEAD TRACK.  
MEMBER SIZES AS  
REQ'D PER DESIGN.



HEAD TRACK

6" LONG SECTION OF STUD ATTACHED  
TO JAMB w/(4)#10-16 SCREWS.

CAP OPENING SIDE OF JAMB  
WITH A SECTION OF TRACK.  
EXTEND TRACK 12" PAST TOP OF OPENING.  
ATTACHED TO JAMB w/(1)#10-16  
SCREW @ 16"o.c. IN EACH LEG.

BACK-TO-BACK JAMB STUDS.  
MEMBER SIZES & QUANTITY  
AS REQ'D PER DESIGN.



**ClarkDietrich.**  
BUILDING SYSTEMS

Engineering Services: (877) 832-3206  
Technical Services: (888) 437-3244

## SILL/HEAD TRACK CONNECTION

TRACK ATTACHED TO BACK-TO-BACK JAMB

The ClarkDietrich's detail library is intended to provide general framing details only and does not replace the judgments and designs of a qualified architect and/or engineer. The details are provided as a starting tool to assist the user in creating and detailing cold-formed steel framing construction details.

Each detail including accompanying text must be thoroughly evaluated and approved by a qualified architect or engineer.

Find over 500 CAD details at [cad.clarkdietrich.com](http://cad.clarkdietrich.com)

© Copyright 2015 ClarkDietrich Building Systems