

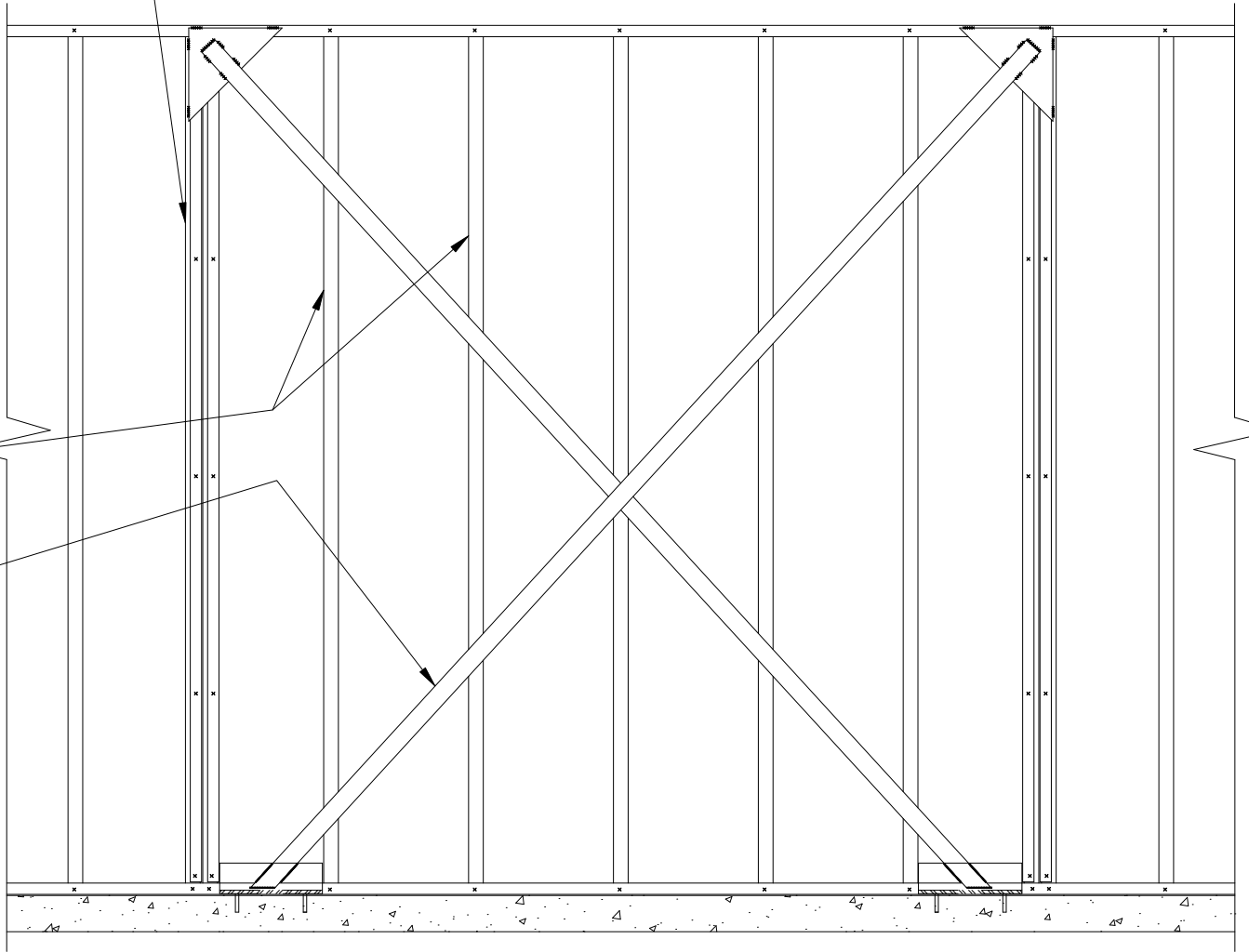
NOTE:

TOP TRACK MUST BE CONTINUOUS AT  
X-BRACING (SPlicing IS NOT PERMITTED)

ClarkDietrich BUILDING SYSTEM  
STUD POST, SIZE AND THICKNESS  
AS REQ'D BY DESIGN

ClarkDietrich BUILDING SYSTEM  
TYPICAL STUDS, SIZE AND  
THICKNESS AS REQ'D BY DESIGN

SHEAR STRAPS, ONE  
ON EACH SIDE OF  
WALL, SIZE AND THICKNESS  
AS REQ'D BY DESIGN



## SHEAR WALL ELEVATION 1



**ClarkDietrich**  
BUILDING SYSTEMS

Engineering Services: (877) 832-3206

Technical Services: (888) 437-3244

The CAD detail library is intended to provide general framing details only and does not replace the judgments and designs of a qualified architect and/or engineer. The details are provided as a starting tool to assist the user in creating and detailing cold-formed steel framing construction details. Each detail including accompanying text must be thoroughly evaluated and approved by a qualified architect or engineer. | Find over 500 CAD details at [cad.clarkdietrich.com](http://cad.clarkdietrich.com) | © Copyright 2015 ClarkDietrich Building Systems