

ATTACH TRACK TO STRUCTURE  
AS REQ'D PER DESIGN.  
CENTERED AT EACH SLOT LOCATION.

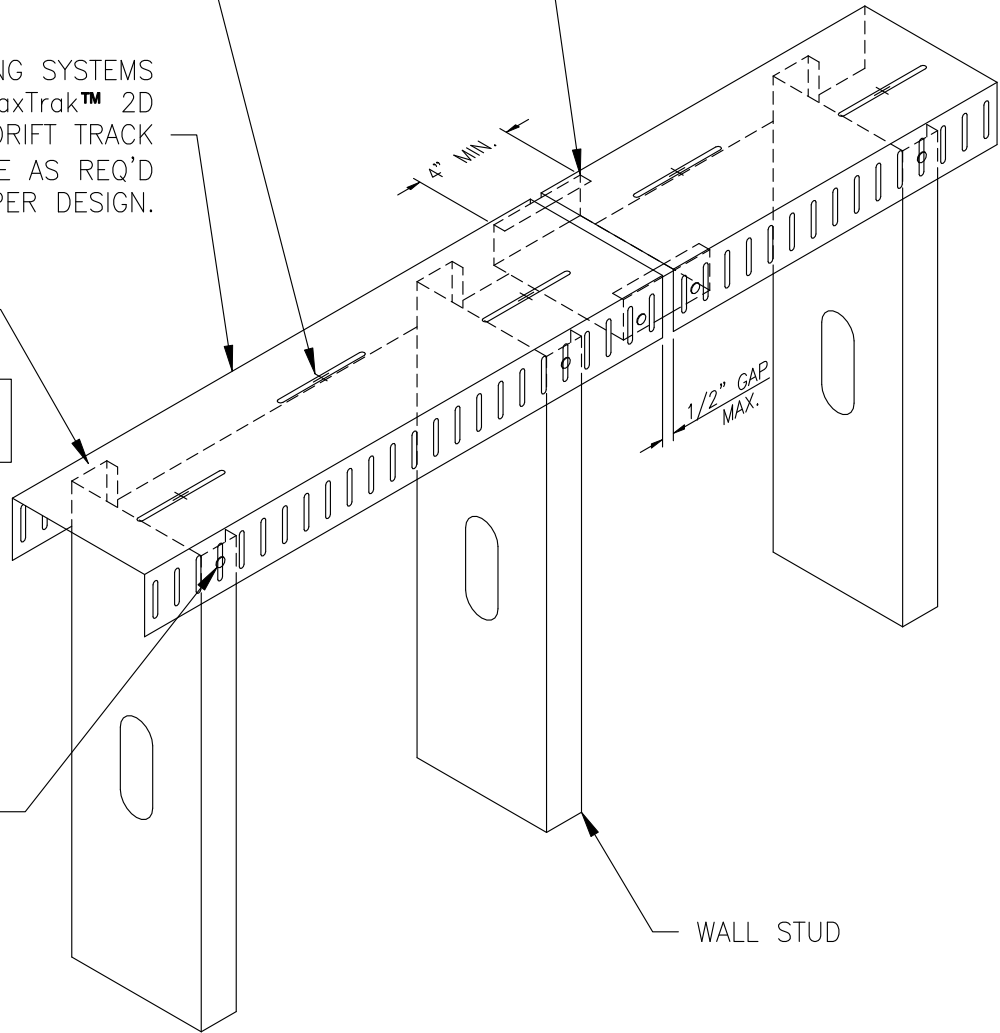
ClarkDietrich BUILDING SYSTEMS  
MaxTrak™ 2D  
SLOTTED DEFLECTION & DRIFT TRACK  
MEMBER SIZE AS REQ'D  
PER DESIGN.

GAP TO  
ALLOW FOR VERTICAL  
DEFLECTION.

ENGINEER OF RECORD:  
VERIFY ADEQUACY OF GAP.

(1)#8-18 WAFERHEAD  
FOR 20 GAUGE  
OR  
(1)#10-16 SCREW  
FOR HEAVIER GAUGES.  
FRAMING SCREWS  
@ EACH STUD LOCATION.

4" LONG MIN. PIECE OF STUD  
SAME GAUGE AS WALL STUD  
TO FIT INSIDE TRACK WEB  
ATTACH USING: (4)#8-18  
WAFERHEAD'S FOR 20 GAUGE  
OR  
(4)#10-16 SCREW'S FOR  
HEAVIER GAUGES BETWEEN  
SLOTS AS SHOWN.



## MaxTrak SLOTTED DEFLECTION TRACK

MAXTRAK 2D WITH SPLICE



**ClarkDietrich**  
BUILDING SYSTEMS

Engineering Services: (877) 832-3206

Technical Services: (888) 437-3244

The CAD detail library is intended to provide general framing details only and does not replace the judgments and designs of a qualified architect and/or engineer. The details are provided as a starting tool to assist the user in creating and detailing cold-formed steel framing construction details. Each detail including accompanying text must be thoroughly evaluated and approved by a qualified architect or engineer. | Find over 500 CAD details at [cad.clarkdietrich.com](http://cad.clarkdietrich.com) | © Copyright 2015 ClarkDietrich Building Systems