

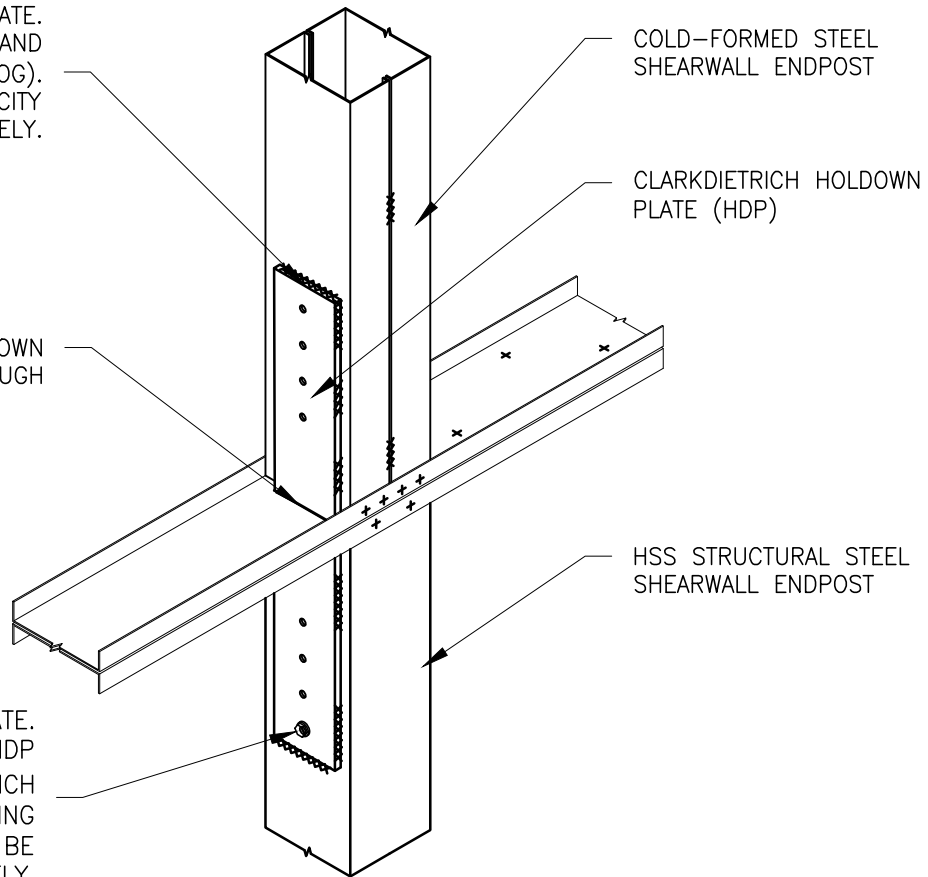
NOTES:

1. WELDING TO COLD-FORMED STEEL SHALL BE COMPLETED BY A SHEET STEEL CERTIFIED WELDER.
2. WELDS SHALL BE CLEANED AND PAINTED WITH A ZINC-RICH (COLD-GALVANIZE) PAINT.

OPTION: WELDED HOLDOWN PLATE.
CAPACITIES LISTED ARE FOR HDP AND
WELDS (SEE CLARKDIETRICH CATALOG).
ENDPOST BASE METAL WELD CAPACITY
SHALL BE CHECKED SEPERATELY.

TRIM WALL TRACK FOR HOLDOWN
PLATE TO PASS THROUGH

OPTION: BOLTED HOLDOWN PLATE.
CAPACITIES LISTED ARE FOR HDP
AND $\frac{3}{4}$ " ϕ BOLTS (SEE CLARKDIETRICH
CATALOG). ENDPOST BOLT BEARING
AND SHEAR RUPTURE SHALL BE
CHECKED SEPERATELY.



HOLDOWN PLATE DETAIL HDP-SE-1

LSF TO HSS SHEARWALL ENDPOST



Engineering Services: (877) 832-3206

Technical Services: (888) 437-3244

The CAD detail library is intended to provide general framing details only and does not replace the judgments and designs of a qualified architect and/or engineer. The details are provided as a starting tool to assist the user in creating and detailing cold-formed steel framing construction details. Each detail including accompanying text must be thoroughly evaluated and approved by a qualified architect or engineer. | Find over 500 CAD details at cad.clarkdietrich.com | © Copyright 2020 ClarkDietrich