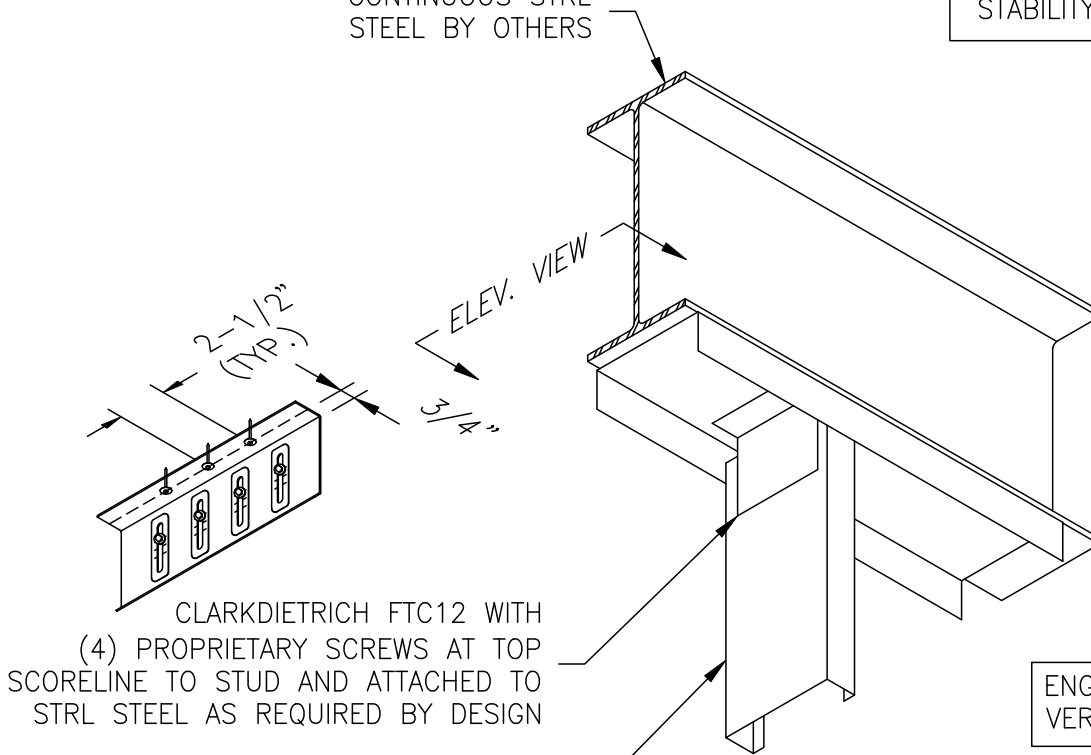


ENGINEER OF RECORD:
PLEASE VERIFY TORSIONAL
STABILITY OF BEAM.

CONTINUOUS STRL
STEEL BY OTHERS



2-1/2"
(TYP.)

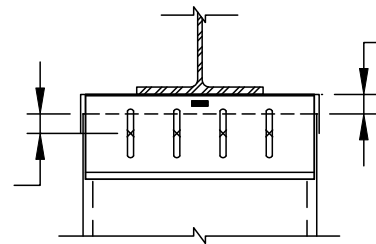
ELEV. VIEW
3/4"

CLARKDIETRICH FTC12 WITH
(4) PROPRIETARY SCREWS AT TOP
SCORELINE TO STUD AND ATTACHED TO
STRL STEEL AS REQUIRED BY DESIGN

CLARKDIETRICH BUILDING
SYSTEMS TYPICAL STUD

ENGINEER OF RECORD:
VERIFY GAP DEPTH.

3/4" MIN.
SCREW EDGE
DISTANCE

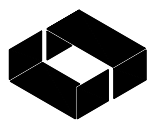


1/2" GAP TO
ALLOW FOR
VERTICAL
DEFLECTION

ELEV. VIEW

0" to 3/4" GAP = TOP SCORELINE
> 3/4" to 1-1/4" MAX. = MIDDLE SCORELINE
> 1-1/4" to 1-1/2" MAX. = BOTTOM SCORELINE

FAST TOP CLIPS (FTC12)-STEEL



ClarkDietrich.
BUILDING SYSTEMS

Engineering Services: (877) 832-3206

Technical Services: (888) 437-3244

The CAD detail library is intended to provide general framing details only and does not replace the judgments and designs of a qualified architect and/or engineer. The details are provided as a starting tool to assist the user in creating and detailing cold-formed steel framing construction details. Each detail including accompanying text must be thoroughly evaluated and approved by a qualified architect or engineer.

Find over 500 CAD details at cad.clarkdietrich.com

© Copyright 2019 ClarkDietrich