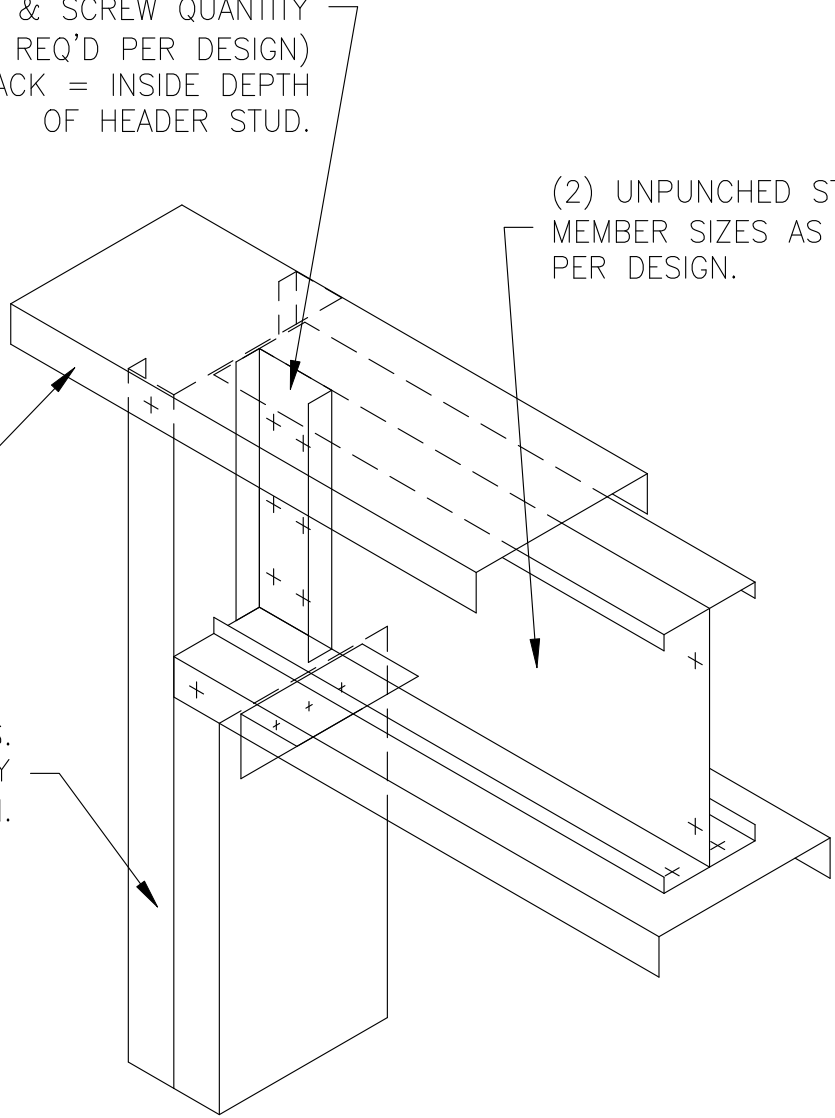


PLACE (1) WEB STIFFENER ABOVE JACK POSTS.
 USE A PIECE OF TRACK ATTACHED TO INSIDE
 OF HEADER STUD WITH SCREWS.
 (TRACK SIZE & SCREW QUANTITY
 AS REQ'D PER DESIGN)
 LENGTH OF TRACK = INSIDE DEPTH
 OF HEADER STUD.

(2) UNPUNCHED STUDS.
 MEMBER SIZES AS REQ'D
 PER DESIGN.

TOP TRACK

JAMB & JACK STUDS.
 MEMBER SIZES & QUANTITY
 AS REQ'D PER DESIGN.



ClarkDietrich.
 BUILDING SYSTEMS

WEB STIFFENER CONNECTION

INSIDE A BACK-TO-BACK HEADER

Engineering Services: (877) 832-3206
 Technical Services: (888) 437-3244

The ClarkDietrich's detail library is intended to provide general framing details only and does not replace the judgments and designs of a qualified architect and/or engineer. The details are provided as a starting tool to assist the user in creating and detailing cold-formed steel framing construction details.

Each detail including accompanying text must be thoroughly evaluated and approved by a qualified architect or engineer.

Find over 500 CAD details at cad.clarkdietrich.com

© Copyright 2015 ClarkDietrich Building Systems