



CHATSWORTH
PRODUCTS

Cable Management and Cable Pathway



[chatsworth.com](https://www.chatsworth.com)

Maximize Network Performance with Cabling Infrastructure Solutions from Chatsworth Products

As your network gets faster, CPI will help you stay one step ahead.

Preparing your network to sustain high performance in a constantly changing environment begins with the structure that supports your network cabling and equipment. Organized, deliberate connections deliver signal performance and make it easier for technicians to troubleshoot issues and deploy new capabilities.

Here's how CPI supports your cabling infrastructure needs:

01

An Extensive Portfolio to Meet a Broad Range of Requirements

- Products are engineered for various industry applications and can be customized to meet your unique needs
- Vertical and horizontal cable management options are provided in a variety of styles, widths, heights and depths
- Competitive lead times available with many items stocked through a vast distributor network

02

Critical Cabling and Fiber Support

- Designed to support standards-based designs and installation best practice
- Proper bend radii ensures maximum quality of data transmission
- Meets high-density cabling requirements

03

Cost-Effective Solutions that Address Future Demands

- Designed to support future networking growth and cabling demands
- Products are engineered to simplify network maintenance and costs
- Allows for easy moves, adds and changes to connections, saving time and money





Supporting Your Cabling Needs—Anywhere Your Network Goes

CPI's customer-centric approach is to discover your requirements, then make recommendations based on your needs.

Whether you are upgrading your current infrastructure or designing a new installation, trust the experts at CPI to deliver the most comprehensive line of cable management and pathway products in the industry. CPI's simple and effective solutions help network networking managers to easily manage and protect cables while maximizing network infrastructure uptime.

From robust solutions for high-density applications to versatile and economical products for lower-density networking needs, CPI has a solution for you.



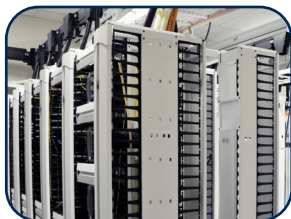
Smart Approach to Cable Management and Pathway Systems

- Motive® Cable Manager
- Adjustable Cable Runway



Standard Cable Management and Pathway Systems

- Evolution® Cable Manager
- Velocity® Cable Manager
- Master Cabling Sections
- Universal Cable Runway
- UL® Classified Cable Runway



Integrated Solutions

- Two- and Four-Post Racks
- Seismic Bracing
- Bonding Busbars
- Power Distribution Units

Motive® Cable Management

A new generation of cable management provides an innovative design that adapts to the cable, and not the other way around.

Motive® Cable Manager offers a level of innovation and sophisticated engineering that is unprecedented in the industry. The patented design features a unique central track system that supports a set of tool-less accessories to provide unlimited adjustability within the cable manager, optimizing use of interior space and inherently ensuring compliance to best practices.



High Configurability and Cabling Best Practices

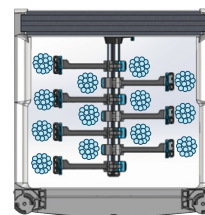
Motive Cable Manager was carefully engineered to promote proper cabling practices regarding cable slack, bend radii and organization.

Attention to Detail

Numerous design elements enhance user experience, and promote intuitive use. For example, every front door features an integrated hook, providing a dedicated space for technicians to hang a test meter.

Supports Current and Future Cabling Needs

Motive addresses advanced Power over Ethernet (PoE) applications where higher wattages require adequately spaced, smaller cable bundles to avoid excessive heat accumulation.



Top drawing view of Single-Sided Motive Cable Manager (P/N 32614) showing efficient use of space and smaller cable bundles.

Maintain a High-Speed Network—Effortlessly

Patented, award-winning design provides a new approach to cable management.

Every Motive Vertical Cable Manager includes tool-less accessories to support a variety of applications right out of the box:



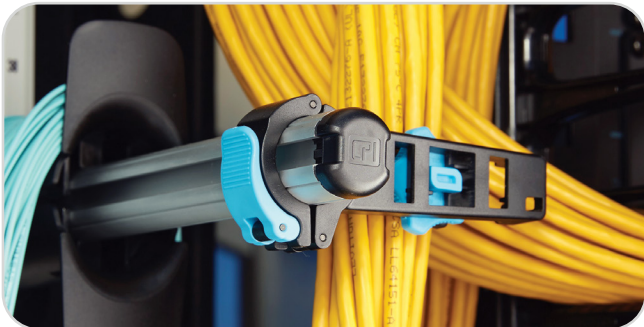
Accessory Rod

Mounts to Motive's central track. It features tool-less, vertical adjustability and serves as the foundation for all of Motive's cable management accessories.



Cable Bundle Swivel

Attaches directly to Motive's central track, Accessory Rod or Rotating Management Finger and allows for quick attachment, removal and adjustment of cable bundles.



Rotating Management Finger

Attaches to the Accessory Rod and provides cable bundle support and bundle segregation at any point within the cable manager.



Half Spool

Snaps onto the Accessory Rod to provide slack management and bend support. Use two spools to create a complete round spool.



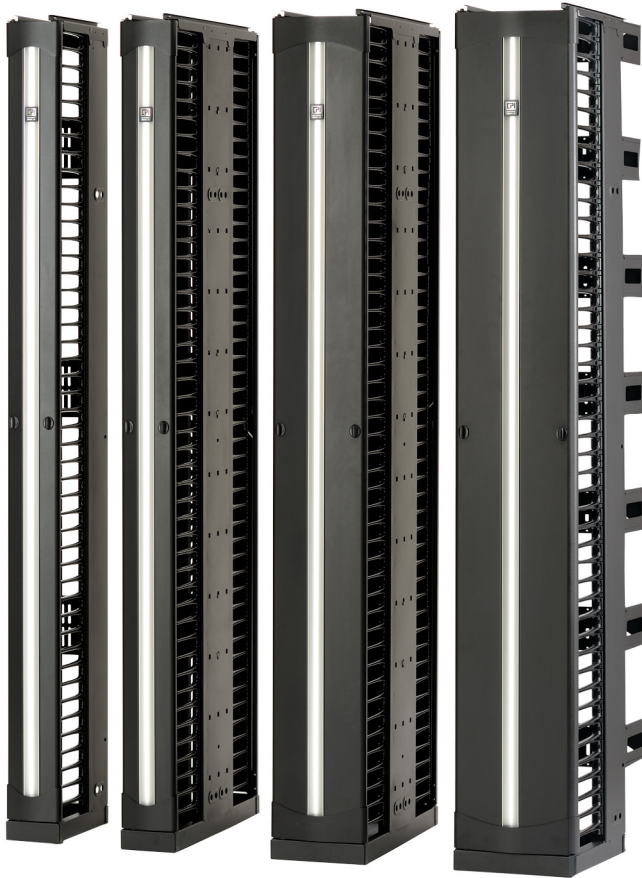
Tool-less Fiber Bend Radius Kit (sold separately)

It snaps onto the finger manager without any tools and can be used for new or retrofit applications. Also compatible with other CPI cable managers.

Evolution[®] Cable Management

CPI's most popular cable manager provides a patented, engineered solution for managing high-density copper cabling and delivering increased performance to match today's data center needs.

Evolution[®] Cable Manager is a reliable, feature-rich cable management solution that delivers a variety of benefits designed to help data center operators meet today's high-density data center application needs. It also includes adjustable mid-panels, easy-to-use front/back doors and interior features that help maximize the capacity and utility of high-density cable management in both vertical and horizontal configurations.



High Performance

Solid construction supports large bundles of heavy cables such as Cat 6a, while sturdy T-shaped cable guides resist bending and deflection and help guide and organize cables.

Dependability

A variety of accessories help effectively address bend radii requirements and cabling best practices, while a patented movable mid-section on double-sided managers allows personalized accessory placement for optimal space utilization.

Accessibility

A removable, single-latch, hinged front/back door provides easy access to cables while rounded edges on the cable guides protect cables as they enter and exit the storage space.



Velocity® Cable Management

Create vertical and horizontal pathways that store and organize premise cables and patch cords on two- and four-post racks with this economical cable management solution.

Velocity® Cable Management is an economical cable management solution for everyday use in telecommunication rooms, equipment rooms and lab spaces. It's also perfect for creating a complete vertical or horizontal pathway for premise cabling and patch cords on CPI Rack Systems and can be paired with a number of additional accessories to increase cable management versatility.



Tool-less Assembly

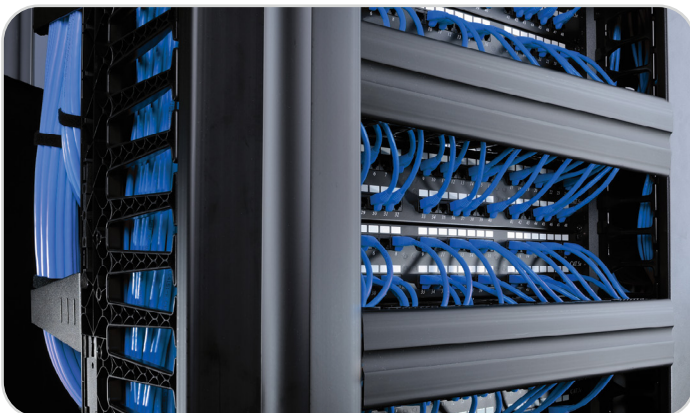
Quick and easy tool-less snap together design means components snap together quickly, taking approximately 3 to 5 minutes to unpack, assemble and install.

Compact Packaging

Reduce waste, freight costs and use less storage space thanks to compact packaging that's 25%–57% smaller than comparable managers.

Simplified Cable Management

T-shaped cable guides and openings on the sides of the manager align with each rack-mount unit and have rounded edges to protect cables from snags.

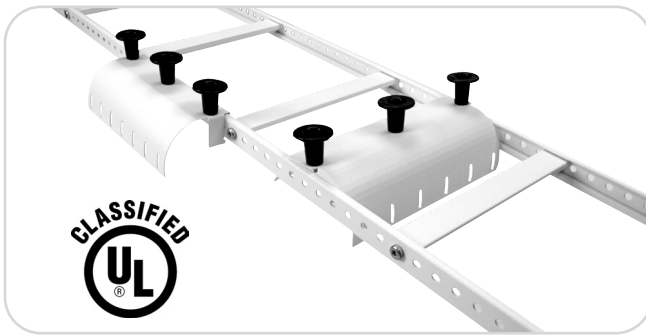


Cable Runway

CPI Cable Runway systems combine quality fit and function in every design component.

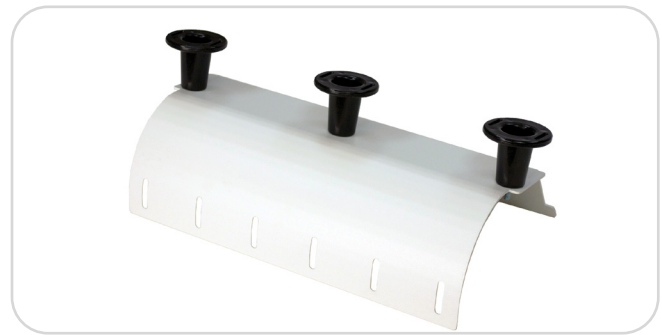
New technologies and a more connected life are challenging organizations to deliver high-performing and reliable networks. An important part of the network is the pathway infrastructure to support and secure cabling from the data center or equipment room to workstations.

**CPI-recommended solution for ICT and facilities equipment rooms:
Highly flexible. Easily adaptable.**



Adjustable Cable Runway

Allows the cross-members to be moved as needed, so cables can enter and exit the pathway precisely where required while preserving bend radii. The adjustable design simplifies cabling installation above racks, cabinets and cable managers, helping to improve the efficiency of technicians and installers.



Tool-less Radius Drops

Attach anywhere needed to provide critical support where cables enter and exit the pathway.



Tool-less Pathway Divider

Divides cable runway into multiple pathways and organizes them by media type or destination.



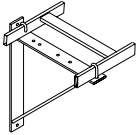
PatchRack for Cable Runway

The miniature two-post rack that attaches to CPI Cable Runway to save rack-mount space by placing patch panels or interconnect equipment above the rack or cabinet. Use PatchRack to create a zone network in the data center.

Ensure Reliability, Flexibility and Rapid Deployment

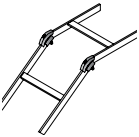
CPI Cable Runway systems can be tailored to meet the specific requirements of each facility and are adaptable for future growth.

Create a complete pathway, enhance cable transitions and promote proper bend radii for better data transmission by including several types of accessories, including:



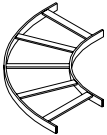
Cable Runway Supports

Attach Cable Runway to the wall, ceiling, floor or the tops of racks and cabinets.



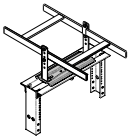
Cable Runway Splices

Pathway components that connect or form sections of Cable Runway together with splice hardware.



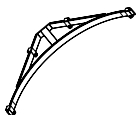
Cable Runway Bends

Create gradual right, left, up or down turns in the Cable Runway. The pre-fabricated pathway transitions include the E-Bend, Outside Radius Bend and Corner Bracket.



Cable Runway Elevation Kits

Elevate Cable Runway above racks or cabinets to allow a full radius as cables exit the pathway to enter the rack.



Cable Runway Corner Bracket

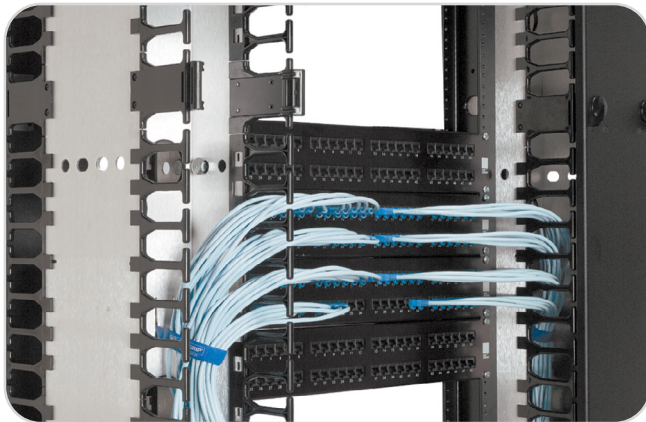
Add a curve to Cable Runway corners at L-, T- or X-shaped intersections.



Additional Solutions

Broad range of practical solutions for high- or low-density cabling applications.

CPI offers all the cable management solutions that you need to ensure your premise network will support emerging technologies, increasing densities and future readiness.



Master Cabling Section (MCS) and Combination Cabling Section (CCS)

For medium-density cabling applications, the MCS and CCS provide patented, plastic T-shaped cable management fingers and openings that align with each U space on the rack.

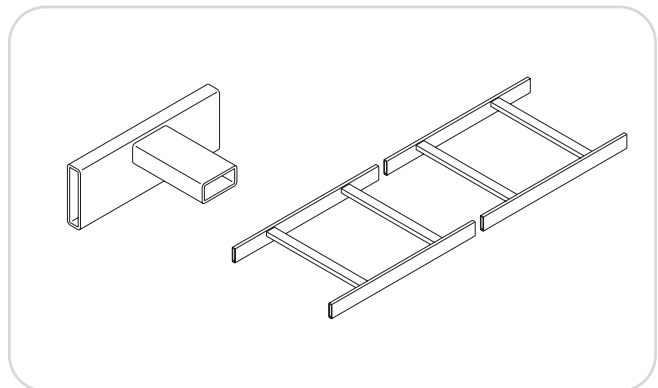


Universal Runway

Traditional pathway solution for distribution over racks in equipment rooms. Note that cross-members are fixed in place.

“For the design of the solution, I like the interoperability of CPI products. I can pick and choose and assemble a solution.”

Magnus Askautrud,
Business Development Manager, Coromatic



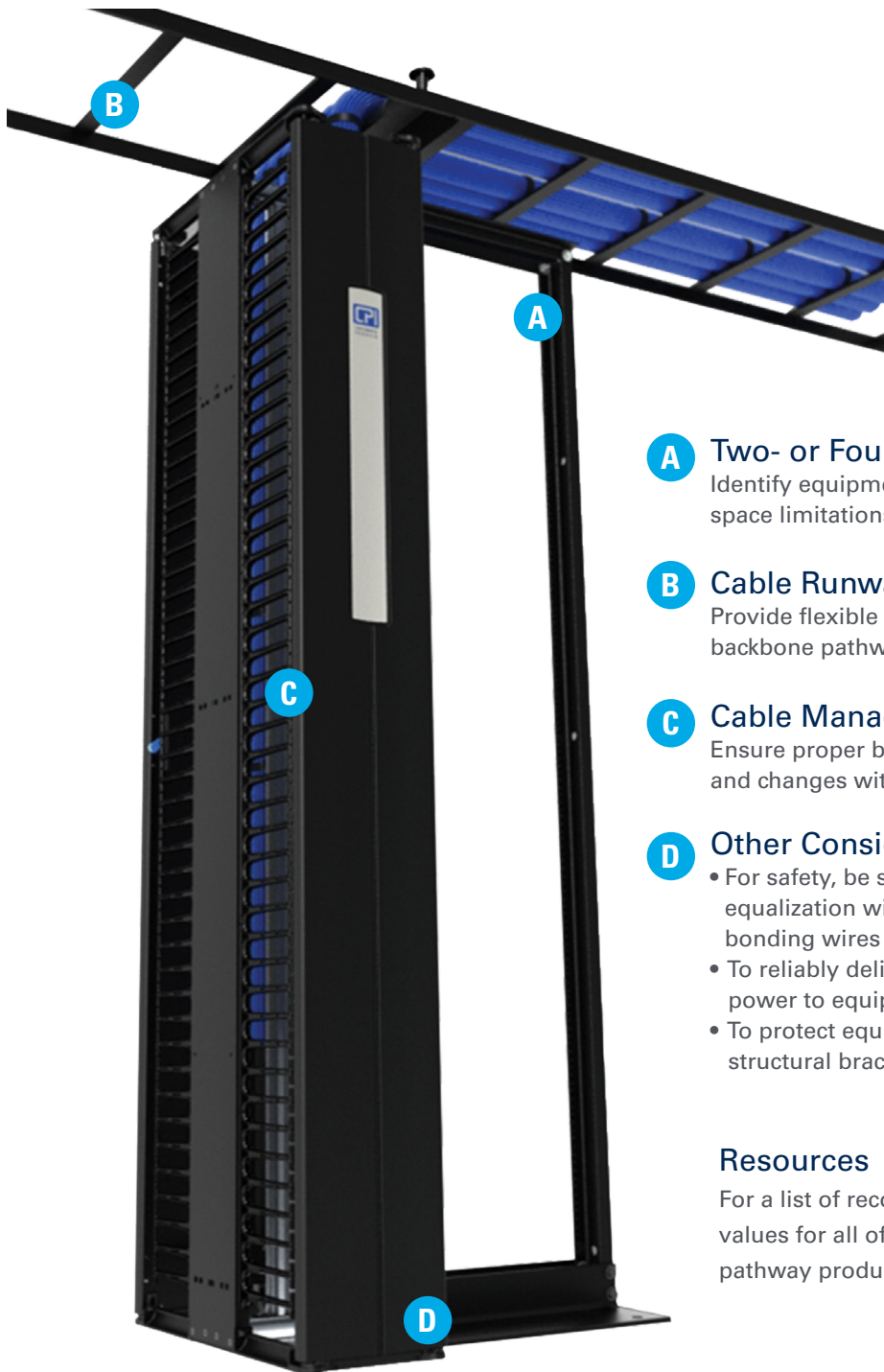
UL® Classified Runway

Bonds when you splice it together, and features 9" (228.6 mm) spacing to comply with TELCO-style standards.

Simplify Deployment with an Integrated Solution

CPI is the single source for a complete system—racks, cable management and pathway products.

Protect network integrity by providing superior support for cable and cord management, helping you to ensure signal quality and network speed.



A Two- or Four-Post Racks

Identify equipment support requirements and space limitations

B Cable Runway and Pathway

Provide flexible support for horizontal, vertical, and backbone pathways

C Cable Management and Accessories

Ensure proper bend radii and easy moves, adds and changes with space-saving, tool-less products

D Other Considerations:

- For safety, be sure there is proper electric equalization with bonding busbars and bonding wires
- To reliably deliver, remotely monitor and control power to equipment
- To protect equipment in seismic areas, select structural bracing for racks and runway

Resources

For a list of recommended and maximum cable fill values for all of CPI's cable management and cable pathway products, visit chatsworth.com/cable-fill.



**CHATSWORTH
PRODUCTS**

United States & Canada

Simi Valley, CA
800-834-4969
Toronto, Ontario, Canada
+905-850-7770
chatsworth.com

Latin America

Mexico City, Mexico
+52-55-5203-7525
Toll Free within Mexico
01-800-201-7592
chatsworth.com.co

Europe

Buckinghamshire, England, UK
+44-1628-524-834
chatsworth.com

Middle East & Africa

Dubai, UAE
+971-4-2602125
Doha, Qatar
+974-4-4267422
chatsworth.com

Asia Pacific

Jing'an District, Shanghai, China
+86 21 6880-0266
chatsworth.com.cn

Find more information
about CPI solutions at:
chatsworth.com

+1-800-834-4969 (U.S. & Canada)
or techsupport@chatsworth.com

Manufacturing Capability and Global Availability

Headquartered in the United States, CPI operates from multiple sites worldwide, including offices in Mexico, Canada, China, the Middle East and the United Kingdom. CPI's manufacturing facilities are located in the United States, Asia and Europe.

Standard products are readily available through a global network of industry-leading distributors. With stock availability, and CPI's consistently competitive factory lead times, you can be assured that CPI solutions will be accessible to meet your project scheduling needs.

How to Buy

CPI sales are conducted in partnership with a global network of distributors, contractors and resellers to ensure a high level of stock availability. Use CPI's Online Catalog to place an order with a distributor near you. Go to chatsworth.com to learn more.

About CPI

CPI, a 100% employee-owned company, was founded in June 1991, when 90 workers joined together and purchased the Dracon Division of Harris Corporation using an Employee Stock Ownership Plan (ESOP). Employee ownership is central to the success of CPI. Employee owners are committed to a philosophy of quality through teamwork, caring and commitment, which are extended to customers through our solutions and services.



All products quoted are subject to availability based on manufacturing capacity and shipping dates should be considered estimates only. While every effort has been made to ensure the accuracy of all information, CPI does not accept liability for any errors or omissions and reserves the right to change information and descriptions of listed services and products.

©2023 Chatsworth Products, Inc. All rights reserved. Chatsworth Products, Clik-Nut, CPI, CPI Passive Cooling, CUBE-IT, Secure Array, eConnect, Evolution, GlobalFrame, MegaFrame, QuadraRack, RMR, Saf-T-Grip, SeismicFrame, SlimFrame, TeraFrame, Motive and Velocity are federally registered trademarks of Chatsworth Products. EuroFrame, H-Plane, Hi-Bar, In-Plane, M-Frame, NetPoint, Simply Efficient, Skybar, Wi-Tile and ZetaFrame are trademarks of Chatsworth Products and Oberon, a division of Chatsworth Products. All other trademarks belong to their respective companies.
Published 01/23 MKT-60020-232

chatsworth.com