

AUT

TE WĀNANGA ARONUI
O TĀMAKI MAKĀU RAU

HEALTH SCIENCES

UNDERGRADUATE PROGRAMME GUIDE 2025



TOP 50
WORLDWIDE
Young University

**AUCKLAND
UNIVERSITY
OF TECHNOLOGY**

Nau mai, haere mai ki AUT WELCOME TO AUT

E ngā mana, e ngā reo
E te iti, e te rahi
E ngā mātāwaka o ngā tōpito o te ao
Ngā mahuetanga iho e kawe nei i ngā
moemoeā o rātou mā
Tēnā koutou katoa

Piki mai rā, kake mai rā,
Nau mai, haere mai ki tēnei o ngā wānanga
Whakatau mai i raro i te korowai āhuru o Te Wānanga
Aronui o Tāmaki Makau Rau

Te whakatupu i te kōunga, i te mana taurite me ngā
tikanga matatika, i ngā pūkenga ako,
i ngā pūkenga whakaako me te āta rangahau hei hāpai
i ngā hāpori whānui o te motu, otirā, o te ao.

To the prestigious, the many voices
The few, the great
To those of all races and creeds
We who remain to fulfil the dreams and
aspirations of the ancestors
Greetings one and all

Climb, ascend
Embark on the journey of knowledge
Let us at AUT embrace and empower you
To strive for and achieve excellence

To foster excellence, equity and ethics in
learning, teaching, research and scholarship,
and in so doing serve our regional, national
and international communities.

Cover

The cover design represents a tukutuku (ornamental lattice work) panel with the Poutama pattern woven onto it. This pattern symbolises levels of attainment, advancement, and personal growth, striving for betterment. The Poutama reflects what AUT does for its students: educate, guide and support them on their journey into a future they define, and we prepare them for. The perspective of the design enhances the concept of the journey. The overlaid design elements on top of the cover pattern show commitment to Te Tiriti o Waitangi and Te Ao Māori being at the foundation of everything; an underlying base to support and enhance all aspects of AUT.

Disclaimer: Although every reasonable effort is made to ensure accuracy, the information in this document is provided as a general guide only for students and is subject to change. All students enrolling at AUT should consult its official document, the AUT Calendar, which is available online at aut.ac.nz/calendar, to ensure that they are aware of, and comply with, all regulations, requirements and policies. The information contained in this programme guide was correct at the time of print, December 2023.

Ngā ihirangi CONTENTS

About AUT

- 02 Why study at AUT?
- 04 Student life

Course information

Bachelor of Health Science

- 06 Overview
- 08 Case Management
- 09 Health Management
- 10 Public and Environmental Health
- 11 Counselling
- 12 Midwifery
- 13 Nursing
- 14 Occupational Therapy
- 15 Oral Health
- 16 Paramedicine
- 17 Perioperative Practice
- 18 Physiotherapy
- 19 Podiatry
- 20 Psychology

- 21 Bachelor of Health Science (Honours)
- 22 Bachelor of Health Science (Physiotherapy) (Honours)
- 23 Diploma in Paramedic Science
- 24 Graduate Diploma in Psychotherapy Studies
- 25 Graduate Diploma in Health Science
Graduate Certificate in Health Science

Applying for your programme

- 26 University entrance
- 28 Fees and scholarships
- 30 How to apply
- 32 Find out more



He aha ai e ako ki AUT? WHY STUDY AT AUT?

Scan this QR code for details about courses, where your study could lead and stories about our great graduates and students.



1 2



3 4



- 1 Gain experience in our oral health simulation laboratory
- 2 Learn in AUT's on-campus podiatry clinic
- 3 The North Campus on Auckland's North Shore is home to AUT's health sciences programmes
- 4 AUT is the only New Zealand university that offers a degree in paramedicine

New Zealand's leading modern university

AUT is proud to be one of the world's best modern universities. Times Higher Education has ranked us in the top 1% of universities in the world, the top 50 universities under 50 years of age, the top 5% of universities for social impact, and number one in Aotearoa New Zealand for international outlook. We're one of the biggest health science education providers, and across all of our programmes, we encourage innovation and entrepreneurship, and the ability to explore new technologies, challenge routine thinking and solve problems in new ways. AUT is where talent meets opportunity, and we love seeing so many of our graduates shape successful careers in different fields of healthcare, in New Zealand and around the world.

Preparing you for the future

At AUT you have access to exceptional learning experiences that prepare you to be successful wherever in the world your career may take them. Workplace experience is at the heart of our degrees, and thanks to our strong industry connections you can choose from a vast number of public and private hospitals, clinics and community settings for your placements. This workplace experience ensures that you'll be well-qualified to succeed in the workplace and have completed the required number of practical hours to meet certification requirements. Interprofessional education – where students from different disciplines learn from, with and about one another – is a key feature of our programmes and ensures that you'll feel prepared to work in complex and everchanging health contexts.

Outstanding on-campus clinics

As a health science student, you could develop your skills in our health clinics, which offer health services like physiotherapy, podiatry, oral health, nursing, occupational therapy, psychology and psychotherapy to the public. This is a great opportunity for you to gain hands-on experience and learn alongside students from other health disciplines, while working with real people with real problems in a New Zealand health clinic. It's a safe and supportive learning environment to apply what you've learnt in the classroom and build up the confidence for your future career. You can also practise your skills in our simulation suites, supported by our friendly and qualified clinicians.

Research that shapes tomorrow

Our research is focused on real-world impact, and we're proud of our reputation as a leading research university. We have a number of world-class research centres, and our research addresses issues facing the environment, society and the world, from trauma research to active ageing and biomedical technologies. We deliver leading research across the field of health sciences. For example, we've led the world's largest study of problem gambling treatments, run New Zealand's only longitudinal study of Pacific Island families and created an award-winning app to assess people's stroke risk. Our research often feeds back into the classroom, and you may even be able to contribute to our research discoveries.

Oranga Taura

STUDENT LIFE

AUT is a modern and innovative university with endless opportunities, and a supportive culture that celebrates diversity and is committed to improving our local and global communities. Our students are at the heart of everything we do, and we're proactive in enabling them to succeed and be ready for any challenge in front of them.

Our Student Hubs – your place to get the support you need

AUT offers some of the most comprehensive student support services in New Zealand, and our Student Hub is where you can learn more about these services. Our professionally qualified staff include social workers and occupational therapists who can support our diverse student community. Our Student Hubs are available both online and across our campuses, so you can get help and support when and where you need it.

Getting you started on your uni journey

Studying at university is exciting and can be quite an adjustment. That's why AUT helps new students transition to university life by delivering a wide-ranging orientation programme at the start of each semester. We also offer activities throughout the semester to transition you into university life. AUT's app also provides up-to-date news, events, and information about AUT anytime, anywhere.

Helping you achieve your academic goals

We do everything we can to help you achieve your academic goals and set you up for a successful career. You'll have access to all the people, resources and technology you need to make the most of your learning opportunities. Our services include academic skills support through our library and their learning services, peer mentoring for help with assessments, adaptive technology, 24/7 academic support through Studiosity, free technology access and financial assistance, as well as tailored support for our postgraduate research students.

Supporting your wellbeing

Our students' health and wellbeing are our highest priority, and AUT is experienced in delivering support to aid students' overall wellbeing. This includes services like 24/7 security on campus; peer support from over 300 student ambassadors, navigators, peer advisors, RUOK advisors and the TalkCampus app; financial assistance; medical, learning and IT support, as well as physical and mental wellbeing support. We actively encourage students to be aware of their wellness needs – mind, body, and spirit. As an AUT student you have access to free and confidential counselling sessions, peer support and programmes to develop better self-knowledge and resilience.

Enabling opportunities for a vibrant uni experience

We want you to make the most of university life, and have fun and grow during your time with us. That's why we offer a range of spaces and initiatives for students including clubs, events, sporting opportunities and state-of-the-art recreational facilities. Our clubs are student-led and cover social, sustainability, cultural and academic interests. If you can't find something you enjoy, you're always welcome to create something new!

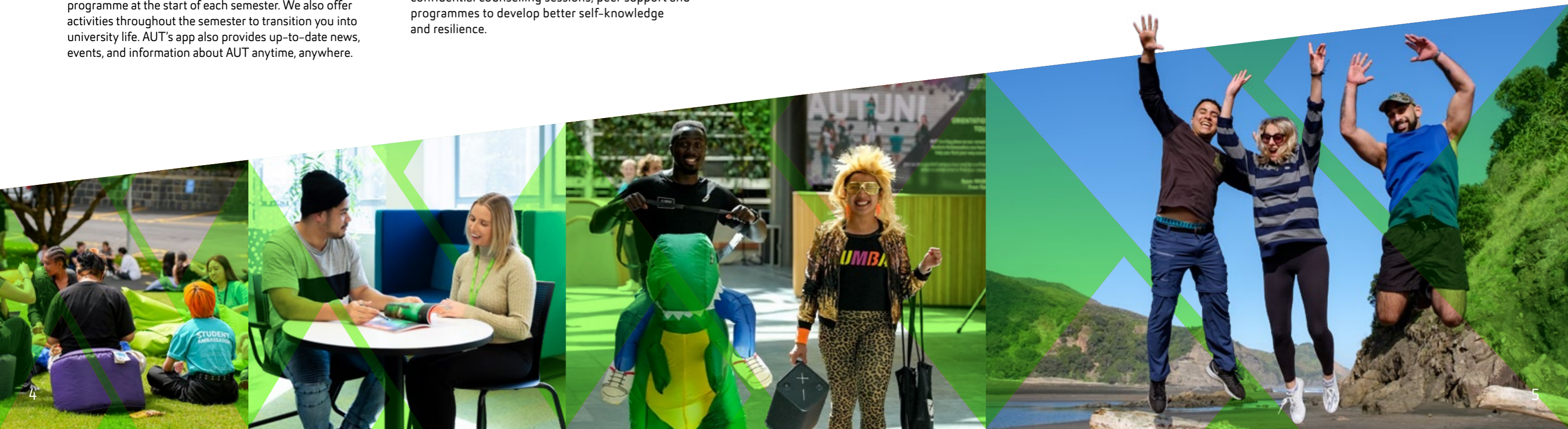
Celebrating our people

We celebrate diversity and our commitment to Te Tiriti o Waitangi with passion, curiosity and pride. We have a strong commitment to Māori advancement, and Pacific wellbeing and success, and have dedicated teams to support all students at AUT. We were the first university in New Zealand to achieve the Rainbow Tick. We're committed to equity of access and opportunity for students, staff and visitors, and support the principles of Kia Ōrite: Code of Practice for an inclusive tertiary environment.

Our dedicated teams include disability services, and rainbow and international student support. Our Student Association (AUTSA) advocates and represents the interests of all AUT students, and shares students' voices through its Debate magazine.

Beyond learning and into employability

Our services, competitions and awards offer you enriching life experiences that will support your career once you graduate. These opportunities can help you gain an edge in the marketplace through workplace experience, international exchanges, industry connections, and CV and interview preparation for when you're ready to start your career. Our Innovation Challenge is also a great incubator for your entrepreneurial ideas and can help you bring your ideas to market.



Bachelor of Health Science

Overview

BHSc | AK3680

QUICK FACTS

Level	7
Points	360
Duration	3 years full-time, part-time available ¹
Campus	North & South ²
Starts	3 March & 21 July 2025 ³

Our population is growing and we're living longer, increasing the need for dedicated and inspirational healthcare graduates. Study with us and we'll help you develop the skills to meet the changing needs of global healthcare. AUT is Aotearoa New Zealand's largest and most diverse health education provider, and our programmes are developed with input from district health boards and leading health organisations. You can specialise in a specific health discipline or become a health professional in a non-clinical role. You learn from staff who are leaders in their field and have a genuine desire to see you succeed. This means you'll be well prepared for your career in the health sector, no matter where you go.

Entry requirements

Minimum entry requirements

All majors

- University Entrance or equivalent
- Must be capable of meeting Health Practitioners Competence Assurance Act (HPCA Act) and Children's Act 2014 requirements, including police clearance

If there is a large number of applicants for a limited number of places in a programme, a selection process will be undertaken based on Te Tiriti o Waitangi, the needs of the health workforce, equity and inclusion.

For Midwifery, Nursing, Occupational Therapy, Oral Health, Paramedicine, Physiotherapy and Podiatry, applicants with English as a second or other language who have not completed at least three years of secondary schooling in Aotearoa New Zealand will be required to meet IELTS requirements.

Counselling⁴

Interview may be required

Midwifery⁵

- Must hold a valid driver's licence
- Will require satisfactory references
- Applicants will normally require 18 credits at level 3 in either Biology, Chemistry or Physics, and 16 credits in one subject from Classical Studies, Drama, English, Geography, Health Education, History, Art History, Media Studies, Social Studies, Te Reo Māori, Te Reo Rangatira

Nursing

- Will require satisfactory references
- Preference will be given to applicants with one subject from Classical Studies, Drama, English, Geography, Health Education, History, History of Art, Media Studies, Social Studies, Te Reo Māori or Te Reo Rangatira, and one subject from Biology, Chemistry, Earth and Space Science, Physics, Science, Calculus, Mathematics, Statistics

Oral Health

- Preference will be given to applicants with Biology and one subject from Classical Studies, Drama, English, Geography, Health Education, History, History of Art, Media Studies, Social Studies, Te Reo Māori or Te Reo Rangatira

Paramedicine

- Must hold a valid driver's licence
- Preference will be given to applicants with one subject from Classical Studies, Drama, English, Geography, Health Education, History, History of Art, Media Studies, Social Studies, Te Reo Māori or Te Reo Rangatira, and one subject from Biology, Chemistry, Earth and Space Science, Physics, Science, Calculus, Mathematics, Statistics

English language requirements

Midwifery

IELTS (Academic) 7.0 overall with 6.5 or higher in Reading and Writing, and 7.0 in Listening and Speaking

Nursing, Paramedicine, Perioperative Practice

IELTS (Academic) 6.5 overall with all bands 6.5 or higher; or equivalent

Occupational Therapy, Oral Health, Physiotherapy, Podiatry

IELTS (Academic) 7.0 overall with all bands 6.5 or higher

Other majors

IELTS (Academic) 6.0 overall with all bands 5.5 or higher; or equivalent

Your study options

As a health science student you begin with courses that provide a good understanding of anatomy and physiology, a person's psychological and social development from conception to old age, and health and environmental perspectives in the context of Aotearoa New Zealand and the world.

After that, you focus on one of the following:

- Case Management
- Counselling
- Health Management
- Midwifery
- Nursing
- Occupational Therapy
- Oral Health
- Paramedicine
- Perioperative Practice
- Physiotherapy
- Podiatry
- Psychology
- Public and Environmental Health

For more information refer to pages 8–20.

You increasingly specialise in your chosen area of health science and become familiar with a wider range of complex health issues. Workplace experience is an important part of your study, and you can also study Māori health courses as part of your degree.

We encourage you to apply as soon as applications are open. Your application can only be assessed when you have provided all of the information requested.



Scan this QR code for details about courses, where your study could lead, and stories about our great graduates and students.



"I chose the midwifery programme because I want to be part of the next generation of midwives who promote and advocate for equity maternity care, especially for those of refugee backgrounds and those who are marginalised in society. I want to be part of the future community that is an encouraging, positive voice for all women. This programme is humbling and very rewarding – you form incredible relationships with families and be part of their life from the day they find out they're pregnant to when they have their baby. I love going on clinical placements in birthing suites, maternity postnatal wards and Auckland Hospital. There's a sense of humility to being accepted as a part of these women's pregnancy journeys."

Louise Nibarema

4th-year student, Bachelor of Health Science (Midwifery)

1. Part-time study is available for the BHSc individual pathway, and the Case Management, Counselling, Health Management, Psychology, and Public and Environmental Health majors.
 2. **South Campus:** Counselling, Health Management, Midwifery (also offered via distance learning), Paramedicine, Perioperative Practice, and Public and Environmental Health. **North & South Campus:** Individual pathway.
North Campus: Case Management, Nursing, Occupational Therapy, Oral Health, Physiotherapy, Podiatry, Psychology.
Distance delivery (Northland): Midwifery, Oral Health, Podiatry, Perioperative Practice.
Distance delivery (Lakes): Midwifery.
Distance delivery (various locations): Perioperative Practice.
 3. Health Management, Nursing and Paramedicine have a Semester 2 intake. Other Bachelor of Health Science majors may also have a Semester 2 intake.
 4. Preference is given to applicants with appropriate life experience.
 5. To register as a midwife, you need to meet the requirements of New Zealand's Midwifery Council. Scan the QR code on page 12 for more details.

Case Management

Scan this QR code for details about courses, where your study could lead, and stories about our great graduates and students.



Ageing populations, and more people living with long-term conditions with complex health needs mean that there's a need for a co-ordinated approach to healthcare. Case management recognises the individual at the centre of this complexity. You develop the skills needed to navigate healthcare systems, applying a case management approach through working with clinicians, clients and families to develop and oversee an individualised and appropriate plan of care.

What you study

YEAR 1

All health sciences students take the same courses in the first semester so you can develop an in-depth understanding of general healthcare. In Semester 2, you're introduced to case management in the health sector, and become familiar with principles of wellness, medical terminology and how to advocate for patients.

YEAR 2 & 3

You deepen your understanding of case management. You'll learn about the theories, concepts and guiding principles of case management, and how to carry out core case management processes including assessments, planning, implementation, co-ordination and evaluation.

You gain an understanding of how to practise case management effectively with clients and family/whānau from a diverse range of backgrounds, and advocate for policies and environments that support quality rehabilitation.

Workplace experience

In your final year you have the opportunity to undertake the Health Practice Co-operative course; 150 hours of workplace experience related to case management.

Recent student placements have been at Lifewise NZ, South Seas Healthcare Trust and AUT Integrated Health.

Career opportunities

- Case manager or care co-ordinator
- Health promotion roles
- Central and local government roles
- Independent health advocate (kaiwhakatere)
- Research-related roles



"The case management major is a good programme for healthcare students who are interested in a managerial role. All doctors need a case manager to help them organise patients and treatments. If you enjoy meeting others, have a knack for motivating and educating people, and are willing to take charge, then this is the healthcare degree to pursue. My 10-week work placement at Lifewise Health & Disability Services as part of my degree was an eye-opener. I learned how Lifewise delivers care to support vulnerable adults and people with disabilities. I also watched and learned how a case manager supports clients' physical activity, and found out what types of programmes or referrals are most likely to be effective."

Faza Azharashid

Singapore

Disability Outcomes Coach, Lifewise NZ
Bachelor of Health Science in
Case Management

Health Management

Scan this QR code for details about courses, where your study could lead, and stories about our great graduates and students.



Health management is becoming increasingly important. There are more and more Primary Health Organisations (PHOs) offering one-stop-shop services. But these complex health service providers need skilled people looking after the administration and management side. One patient can have multiple healthcare requirements, and as a health management graduate you ensure all their needs are met. Health management is a good choice if you want to move into the business administration side of the health sector.

What you study

YEAR 1

All health sciences students take the same courses in the first semester so you can develop an in-depth understanding of general healthcare. In Semester 2, you're introduced to health management and learn more about the social and political influences on health and disability support and management in Aotearoa New Zealand.

YEAR 2 & 3

You focus on developing practical skills while deepening your understanding of health management, administrative management in the health sector, health and wellness, and the needs of clients.

Across these two years you'll learn how to work as a team to provide culturally appropriate support and apply administrative, management and mediating skills for clients. You also learn to analyse and interpret health-related information, and become familiar with industry-specific technology to access, interpret and present this information. The final year prepares you to make the transition to working within the wider health sector.

Workplace experience

At the heart of your final year is the Health Practice Cooperative course; 150 hours of workplace experience in organisations where you can put into practice the management skills you have learnt. Recent placements have included: ACC, Ember Services, AUT Integrated Health, South Seas Healthcare Trust, Auckland Council, Southern Cross Group; Health, Quality and Safety Commission; Odyssey, Village Cooperative, WMDHB, Whānau Ora, Health Economics Consulting, and Oceania Healthcare.

You may also be able to work on one of several research, teaching and innovation projects.

Career opportunities

- District health board roles
- Roles in other Crown agencies
- Roles in private healthcare providers



"Being in an educational environment with a purpose and vision, and surrounded by likeminded peers and supportive university staff cheering for your success is an invaluable asset. I made lifelong friends within my own degree and other programmes at AUT. Making friends was one of my main goals, and I'm thankful to AUT for providing me with this opportunity. During my courses on health informatics and health records management I came to realise how rapidly the health sector is going digital. I saw an immense demand for professionals who can create a robust structure for our health sector to ensure it operates smoothly within the new boundaries dictated by the ever-developing requirements of a constantly changing world."

Paul Fedorchenko

Southern Region Team Leader, HealthCare NZ
Bachelor of Health Science in
Health Management

Public and Environmental Health

Scan this QR code for details about courses, where your study could lead, and stories about our great graduates and students.



Those working in public and environmental health are preventative thinkers who understand and can reshape health in a sustainable way. This study option is committed to human rights, health equity and social justice principles. The skills you acquire will enable you to develop and lead initiatives in mental health, violence-free society, youth and community development, healthy eating and fitness, industry and lifestyle wellness, environmental sustainability and healthy spaces, road safety and injury prevention, tobacco, alcohol and gambling controls.

What you study

YEAR 1

All health sciences students take the same courses in the first semester so you can develop an in-depth understanding of general healthcare. In Semester 2, you're introduced to public and environmental health, and explore key issues affecting the health and wellbeing of people and communities.

YEAR 2 & 3

You develop practical skills and further your understanding of the values and approaches of public and environmental health.

Over these two years you'll become familiar with the philosophies that underpin public and environmental health, and learn how to apply them to help people. You also learn how to analyse health strategies and contribute to public and environmental health initiatives. You also explore how to communicate new health initiatives using a variety of media to reach all sectors of society. The final year prepares you to make the transition to working in the wider sector.

Workplace experience

At the heart of your final year is the Health Practice Cooperative course; 150 hours of workplace experience in organisations involved in public and environmental health. Recent placements included:

- Healthy Families: Manukau, Manurewa-Papakura
- Manurewa Marae: Whare Oranga
- District health boards
- Auckland Council
- Accessible: Environmental Health Management Services
- The Asian Network Incorporated
- Breast Cancer Foundation NZ

You may also be able to work on one of several research, teaching and innovation projects.

Career opportunities

Roles in the public and private sectors in areas like:

- Sustainability
- Urban development
- Equity programmes
- Māori and Pacific health
- Digital arena – eHealth apps, serious games etc
- Social innovation and enterprise



"Public health and environmental health combines my desire to help others with my passion for fighting inequities and injustices in our health system. The avenues to pursue within public health are endless, and my degree equipped me with the tools to do so. I decided to also minor in Māori development to better educate myself on te ao Māori. This has enabled me to more deeply understand public health in the context of Aotearoa New Zealand. AUT has enabled me to be flexible and learn about the things I'm passionate about; the things that matter to me."

Meg Harland

Warm Dry Homes Co-ordinator,
Kootuitui ki Papakura
Bachelor of Health Science in Public and Environmental Health, with a minor in Māori Development

Counselling

Scan this QR code for details about courses, where your study could lead, and stories about our great graduates and students.



If you become a counsellor you help people deal with their feelings, better understand themselves, make decisions and create change in their lives. The Counselling major prepares you to work with a diverse client base. You become familiar with the history and theory of counselling, and the relational counselling model. The degree includes 200 hours of counselling practice, bicultural learning, marae visits and knowledge of Te Tiriti o Waitangi issues. Preference is given to applicants with appropriate life experience.

What you study

YEAR 1

All health sciences students take the same courses in the first semester so you can develop an in-depth understanding of general healthcare. In Semester 2, you become familiar with the history and theory of relational and kaupapa Māori approaches to counselling, and counselling skills and knowledge including the client/counsellor relationship.

YEAR 2

You deepen your understanding of counselling and begin your first counselling placement. Courses cover areas like group counselling, mental health and psychopathology.

YEAR 3

You continue your counselling placement and complete the last of your counselling courses and some optional courses. You further your counselling skills and knowledge, and delve into health law and policy.

Workplace experience

As part of this major you complete a minimum of 200 hours of counselling practice and 20 hours of supervision, along with 10 hours of cultural supervision as required by the New Zealand Association of Counsellors. Please note that there will be an additional cost for this supervision.

Career opportunities

- Community counselling agencies
- Counsellors in schools
- Mental health providers
- Māori health providers
- Pacific health providers
- Refugee and migrant services

Graduates are eligible to apply for provisional membership of New Zealand Association of Counsellors (NZAC) to begin practising as a counsellor.

Midwifery

Scan this QR code for details about courses, where your study could lead, and stories about our great graduates and students.



Develop the skills to provide excellent midwifery care. AUT's midwifery degree prepares you for a successful and rewarding career as a midwife, either as a hospital midwife or a lead maternity carer (a self-employed case loading midwife). Practical experience is a key part of the midwifery programme. You spend more than half of your time in clinical practice, developing the skills to become a confident and competent midwife.

What you study

The Bachelor of Health Science (Midwifery) is a four-year, 480-point programme.

YEAR 1

All health sciences students take the same courses in the first semester so you can develop an in-depth understanding of general healthcare. In Semester 2, you're introduced to midwifery practice and gain an understanding of how to provide safe, competent and culturally safe midwifery care within the scope of normal childbirth.

YEAR 2 & 3

You further your understanding of the art, science and practice of midwifery and pharmacology. Courses also explore complications of childbirth, the newborn with special needs, women's health and factors that impact on midwifery. These skills prepare you for professional practice.

YEAR 4

You spend 80 percent of your time in practice placements with lead maternity carer midwives (self-employed case loading midwives) in the community and in primary and secondary maternity hospitals.

Workplace experience

Throughout your studies you complete 2,400 practice hours, an experience that reflects the real world of midwifery.

This includes:

- **Year 1:** 150 hours (simulation and skills on campus)
- **Year 2:** 450 hours
- **Year 3:** 600 hours
- **Year 4:** 1,200 hours

To apply for this degree, the programme code is AK1035.

Nursing

Scan this QR code for details about courses, where your study could lead, and stories about our great graduates and students.



Nurses are critical to the success of the healthcare system, and AUT-trained nurses are recognised as some of the best in New Zealand. We achieve this through our strong nursing programme, guided by leading nursing academics and clinicians. The nursing degree focuses on interprofessional practice and care, just like it is in the workplace. You'll learn that health and healthcare is multifaceted and dynamic, and goes beyond health and illness care to nurture the growth of healthy communities.

What you study

YEAR 1

All health sciences students take the same courses in the first semester so you can develop an in-depth understanding of general healthcare. In Semester 2, you're introduced to nursing practice and become familiar with nursing knowledge, nursing skills and health service delivery.

YEAR 2

You focus on nursing individuals with physical and mental illness. Year 2 also includes community placements where you gain clinical experience in both the hospital and community, in acute and chronic illness and mental health. You also become familiar with conceptual knowledge, psychomotor skills and clinical decision-making skills.

YEAR 3

In your final year, the focus is on the complexity of caring for individuals, young and old, and their families in hospital and community settings. You develop clinical skills, clinical reasoning and decision-making skills to nurse people with complex health conditions. You also study the impact of developmental and rehabilitation issues.

Workplace experience

The final semester prepares you for graduate nursing practice. This involves an extended placement (360 hours) in a setting where you can apply your science and nursing knowledge to the nursing of individuals, families and populations with a range of health needs. Recent placements included Starship (paediatric), Community Alcohol and Drug Services (CADS), Mason Clinic (forensic mental health), emergency and critical care departments, primary healthcare and aged care.

Throughout your studies you complete 1,200 hours of practical experience in hospitals and community centres.

To apply for this degree, the programme code is AK3324.

Career opportunities

Midwives work in the areas of pregnancy and childbirth, including the first six weeks after childbirth. They are employed in public hospital services, or set up in practice as a self-employed midwife in the community.

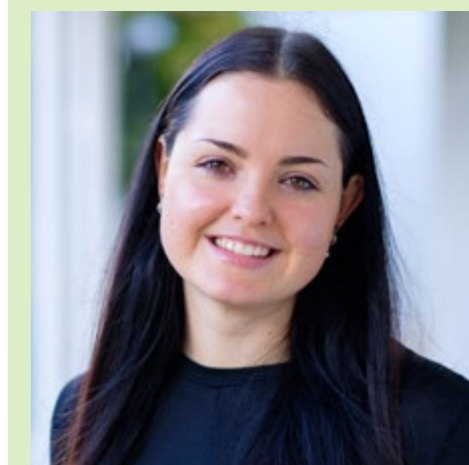


"I decided to study midwifery because I loved the idea of building a connection with women and whānau while providing care for them over an extended period of time. I came to AUT because it offers a highly regarded midwifery programme. The head of midwifery at the time even held the position of chair of the midwifery council. During the programme you're supported through multiple placements, and working alongside whānau during these placements enabled me to gain hands-on experience. Guided by the midwives, I was able to learn how to safely care for wāhine in pregnancy and labour, and also how to deliver and care for newborn babies. This has made me the midwife I am today."

Maia Wharekura
Ngāti Kahungunu
Self-employed Lead Maternity Carer, Rotorua
Bachelor of Health Science (Midwifery)

Career opportunities

Graduates who pass the Nursing Council of New Zealand's State Examination gain registration as a Registered Nurse. Nursing registration gives scope for specialisation in health service delivery and work in organisations allied to the health sector.



"Every single lecturer and clinical educator made me feel motivated and confident in myself, and my progression through my degree. I also loved how ready I felt to enter the workforce once I graduated from AUT. AUT's nursing programme is closely aligned with the New Zealand Nursing Council competencies and expectations for registered nurses. This degree is very hands-on and teaches you the skills you need to complete clinical placements and eventually work as a nurse. The things I love most about my job now are the high acuity patients we look after and the intensive 'life vs death' treatments we can provide."

Jade Parker
Registered Nurse, Department of Critical Care Medicine, Auckland City Hospital
Bachelor of Health Science (Nursing)

Occupational Therapy

Scan this QR code for details about courses, where your study could lead, and stories about our great graduates and students.



Occupational therapists promote the health and wellbeing of individuals, groups and communities. They help people participate in everyday activities including learning, communication, interpersonal interaction and relationships, mobility, self-care, domestic life, and social life. Occupational therapists can also modify people's environment – or the activity itself – to help them participate in the activity.

What you study

YEAR 1

All health sciences students take the same courses in the first semester so you can develop an in-depth understanding of general healthcare. In Semester 2, you're introduced to occupational therapy, and the meaning and characteristics of a range of occupations. You also complete a supervised fieldwork practicum.

YEAR 2

You explore how illness or injury impacts on people performing their occupations and typical occupational therapy intervention. You can experience practice education in both semesters.

You consider how the environment affects occupational performance, learn about research, develop group work skills, and choose from a range of electives. Throughout the year you'll need to complete fieldwork hours.

YEAR 3

You learn about using evidence in practice to work with individuals; how to work with communities, organisations or groups of people; and how to change systems to enable participation. You also develop decision-making skills around assessment and intervention.

Workplace experience

Throughout your study you complete block placements (at least 1,000 hours) in a number of practice settings to prepare you for professional registration. You could experience a wide range of practice areas across Te Whatu Ora and other organisations including hospitals, community services, Kaupapa Māori services, specialist schools, forensic services or private practice.

Career opportunities

When you graduate you can apply to register as an occupational therapist in New Zealand and other countries. Occupational therapists work with all age groups in:

- Primary Health Organisations (PHOs)
- Health centres and hospitals
- Residential care facilities
- Private practice
- Rehabilitation and ACC



"I would 100% recommend studying occupational therapy. After working as a community carer in the UK during COVID-19, I knew that I wanted to change my life and work in healthcare. I originally wanted to be a paramedic however during my first semester studying health sciences at AUT, I realised that the more I researched and looked into occupational therapy the more I realised I wanted to be an occupational therapist. It's a great healthcare profession, and the programme has been really challenging and engaging, with a mix of theory and good practical experience. Occupational therapy allows me to explore my logical and creative brain as I can help people problem solve and get back to the things they need and want to do in life."

Jenny Martin

2nd-year student, Bachelor of Health Science (Occupational Therapy)

To apply for this degree, the programme code is AK3410.

Oral Health

Scan this QR code for details about courses, where your study could lead, and stories about our great graduates and students.



Accredited by the Dental Council of New Zealand, this degree equips you with the knowledge and skills to practise oral health therapy. The practice of oral health therapy includes procedures for the assessment of oral health and prevention of dental caries and periodontal disease, delivering treatment for dental caries in patients up to the age of 18, managing periodontal disease and engaging with communities to promote oral health. A wide range of teaching and learning methods is used including lectures, online sessions, self-directed learning, hands-on training in the simulation laboratory, community engagements and clinical placements.

What you study

YEAR 1

All health sciences students take the same courses in the first semester so you can develop an in-depth understanding of general healthcare. In Semester 2, you learn more about human anatomy and the integral role it plays in oral health therapy practice. You also become familiar with the prevention and management of dental diseases, and have the opportunity to work first-hand with the community, including an education programme that you plan, evaluate, resource and implement.

YEAR 2

You continue to study human sciences with particular emphasis on the oral cavity, and become familiar with generic and discipline-specific pharmacology. You further your understanding of restorative and hygiene practice procedures in the pre-clinical laboratory. This year you also start to assess and treat patients in the clinics at AUT and in the wider community.

YEAR 3

You complete your pre-clinical education and start to undertake clinical activities both on and off site. To ensure 'work readiness', you will undertake your oral health courses as well as courses focused on health law and professional practice and ethics.

Workplace experience

Throughout your study you complete over 1,000 hours of clinical learning to prepare you for professional registration. There's an emphasis on practical experience, including clinical experience at AUT's on-campus oral health clinic, private practices and DHB clinics. In your final year, you complete a community placement in New Zealand or internationally.

To apply for this degree, the programme code is AK3113.

Career opportunities

By successfully completing this degree you can register as an oral health therapist with the Dental Council of New Zealand. Your qualification is also recognised in Australia.

You could work in:

- District health boards (DHBs)
- Private, general or specialist practice
- Oral health promotion
- Education sector



"I really enjoyed the part of my degree where I was able to use all the knowledge and skills I had been learning for years and finally put them into practice. The placements gave me a taste of what it would be like to work as an oral health therapist, and that's when I knew I had definitely picked the correct career path for myself. I now deliver quality dental care to patients, including diagnosing and treating oral diseases like dental caries and periodontal disease, as well as providing key oral health education on how to care for your teeth and gums."

Khooshi Patel

Oral Health Therapist, ARDS | Te Whatu Ora - Waitemata District Health Board
Bachelor of Health Science (Oral Health)

Paramedic

Scan this QR code for details about courses, where your study could lead, and stories about our great graduates and students.



Paramedicine is New Zealand's most trusted profession, helping the community it serves in times of need. The Paramedicine major prepares you for these challenges. You learn from staff who are intensive care paramedics, emergency nurses, defence force medics, midwives, medical specialists and emergency management specialists. There's a focus on practical experience with clinical placements available in ambulance services, hospitals, mental health institutions, ski fields, and community or primary health centres.

What you study

YEAR 1

All health sciences students take the same courses in the first semester so you can develop an in-depth understanding of general healthcare. In Semester 2, you're introduced to paramedicine, and the practical aspects of pre-hospital emergency care and the clinical work environment. You also become familiar with medical trauma, and the management of traumatic and acute medical emergencies.

YEAR 2

You develop further theory and skills related to paramedicine practice. There's an emphasis on cardiology and managing patients with altered haemodynamics (resuscitation, defibrillation, 12 Lead ECG, intravenous access and drug therapy). You also become familiar with pharmacology and research methods for paramedics and complete large amounts of clinical practice. Ambulance operations are also covered.

YEAR 3

You develop a safe, integrated clinical paramedicine practice. This includes resuscitation, mental health, primary care and health law. This year focuses on preparing you for employment as a practising paramedic. It also includes a clinical reasoning component.

Workplace experience

Throughout your degree you complete approximately 1,000 hours of clinical placement in ambulance services, hospitals, mental health institutions and community or primary health centres. These placements require you to be mobile and work shifts.

Career opportunities

- Paramedic
- International relief work
- Safety services and emergency management roles
- Medic on super-yachts and cruise liners
- Working on oil rigs, industrial sites or ski fields



"I wanted to have a career that excites and challenges me. As a paramedic every day is different, and you get to meet so many different people. I'd definitely recommend AUT's paramedicine degree to others. This programme has a great balance of theoretical and practical components, and all of the lecturers are so helpful and supportive. I really enjoyed being able to attend the clinical placements throughout my degree. You can interact with patients in real-life situations and put the skills you learn in class to use, as well as work alongside ambulance officers and other health professionals. This is where you gain the experience for life as a paramedic after university and make valuable connections."

Eireann Hudner
Paramedic, St John
Bachelor of Health Science in Paramedicine

Perioperative Practice

Scan this QR code for details about courses, where your study could lead, and stories about our great graduates and students.



Become an anaesthetic technician and care for patients throughout their operating theatre journey. You'll become a key member of a team that cares for patients at a vital time, and really make a difference to their lives. You learn from staff who are anaesthetic technicians, anaesthetists, nurses, midwives and medical specialists. There's a focus on practical experience with clinical placements in a range of operating theatre specialities. As a graduate of this programme you can apply for registration as an anaesthetic technician with the Medical Sciences Council of New Zealand.

What you study

YEAR 1

All health sciences students take the same courses in the first semester so you can develop an in-depth understanding of general healthcare. In Semester 2, you're introduced to the theory and practice of anaesthesia and perioperative care, and the management of traumatic and acute medical emergencies.

YEAR 2

You're introduced to methods of research and enquiry, pharmacology, surgery, haemodynamics and cardiology. You also further your skills in anaesthetic and perioperative practice. This year also contains a clinical practice element.

YEAR 3

You advance your knowledge of anaesthetic and perioperative practice including more clinical practice elements. You'll also cover clinical reasoning, life support, health law and policy, and clinical risk management.

Workplace experience

Throughout your degree you complete approximately 1,100 hours of clinical placement in perioperative settings, including public and private hospitals, operating rooms, post-anaesthetic care units, and resuscitation teams. These placements require you to be mobile and work shifts. Students may be required to undertake clinical placements anywhere within New Zealand.

Career opportunities

Anaesthetic technicians can work at District Health Boards (DHBs) or private hospital organisations. With this degree you'll be highly employable throughout New Zealand.



"I had chosen the perioperative practice degree because I have a passion for helping people. The degree leads to the specialised job of anaesthetic technician. I've found this programme extremely interesting, and have really enjoyed building on my knowledge through assignments and clinical placements. The lecturers have given me confidence in my abilities. I've also really enjoyed my clinical placements because I was able to interact with others in the workforce and start learning the anaesthetic technician role. I can't wait to graduate and be a registered anaesthetic technician and help people through times in their life that could be very traumatic and stressful. It's great to be able to support patients through this by making it as comfortable as possible."

Amy McMillan
Te Ati Haunui-a-Pāpārangī
3rd-year student, Bachelor of Health Science
in Perioperative Practice

Physiotherapy

Scan this QR code for details about courses, where your study could lead, and stories about our great graduates and students.



Physiotherapists help people improve their quality of life. As a physiotherapist you work with a wide range of people, helping them overcome physical problems due to ageing, injury, diseases, disorders, conditions or environmental factors. Most New Zealand physiotherapists work privately, treating acute sport and accidental injuries, chronic pain, back and neck problems. You also find physiotherapists in most hospitals and general practices. Our physiotherapy graduates are recognised throughout the world for their knowledge and leadership in healthcare.

What you study

The Bachelor of Health Science (Physiotherapy) is a four-year, 480-point programme.

YEAR 1

All health sciences students take the same courses in the first semester so you can develop an in-depth understanding of general healthcare. In Semester 2, you're introduced to physiotherapy and become familiar with body systems and functions in preparation for physiotherapy practice.

YEAR 2

You're introduced to the management of abnormal function and physiotherapy assessment, including clinical reasoning principles, evidence-based practice and a range of physiotherapeutic techniques. You develop an understanding of the rehabilitation of disorders of movement and function, exercise-based rehabilitation and clinical science reasoning and research methods. You could also spend one week observing physiotherapy in practice.

YEAR 3

You develop more specific assessment and treatment skills, and become familiar with a wider range of complex health issues. This requires more detailed assessment and advanced treatment strategies, together with an understanding of reflective, professional and ethical practice. You'll also be provided with a two-week student assistantship.

YEAR 4

The majority of the year is spent in a clinical centre, where you complete supervised physiotherapy practice experience.

Workplace experience

There is a strong focus on clinical practice, and you complete about 1,000 hours of clinical physiotherapy experience as part of your studies.

To apply for this degree, the programme code is AK3313.

Career opportunities

Physiotherapists specialise in acupuncture, cardiothoracic illness, hand therapy, health promotion and primary healthcare, manual therapy, mental health, neurology, occupational health, older adults, paediatrics and sports.



"My job requires me to assess and treat a variety of injuries. Using certain assessment techniques allows me to create the best treatment plan for each patient. What I enjoy most is working with people from a variety of different cultures and backgrounds, and navigating through the treatment process with them. I've also found it very rewarding to be able to help people return to their daily activities or sports activities pain free and achieve their goals. I'm proud of being Māori and being able to make a difference for our whānau and community. But I'm most proud of putting in the mahi at university to now be able to live out my dream job as a physiotherapist."

Terence Pohatu Waikite Thornton Apiata
Tuhoe, Ngati Awa, Te Whakatohea, Ngāpuhi
 Physiotherapist, Performance Plus & Wai Mauri Health, Hamilton
 Bachelor of Health Science (Physiotherapy)

Podiatry

Scan this QR code for details about courses, where your study could lead, and stories about our great graduates and students.



Podiatry focuses on the prevention, diagnosis, treatment and rehabilitation of common conditions affecting the lower limb and foot. Study podiatry with us, and you'll be well prepared for a career as a podiatrist in both the private and public sectors. After successfully completing this degree, you can apply to register as a podiatrist in New Zealand and overseas.

What you study

YEAR 1

All health sciences students take the same courses in the first semester so you can develop an in-depth understanding of general healthcare. In Semester 2, you become familiar with podiatry clinical practice and musculoskeletal podiatry, and further your understanding of human anatomy and physiology.

YEAR 2

You undertake clinical practice, focusing on clinical podiatry techniques, and under supervision begin to treat patients at AUT Integrated Health's podiatry clinic. You explore contemporary concepts in pathology, diabetes and the management of common musculoskeletal conditions, and expand on the theory introduced in Year 1 including anatomy, physiology and clinical musculoskeletal assessment.

YEAR 3

You study rheumatology, long-term conditions management and podiatric imaging. You develop clinical decision-making skills to become an independent practitioner.

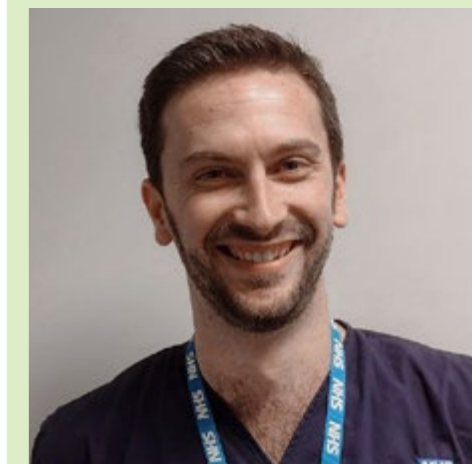
Workplace experience

Clinical placements in hospitals, primary health organisations, private practices and AUT's on-campus podiatry clinic are a key part of this programme. Your final year ends with an extended placement in private practice, the public sector and AUT's clinical facility, exposing you to a wide range of interprofessional clinical environments.

To apply for this degree, the programme code is AK3713.

Career opportunities

To work as a podiatrist you need to hold a degree in podiatry and be registered by the Podiatrists Board of New Zealand. Qualified New Zealand podiatrists are able to practise in Australia, Singapore, and the United Kingdom. You could work in sports, high-risk foot and older adult podiatry.



"I thoroughly enjoyed my time at AUT. The academic staff were all very knowledgeable and approachable. The structure of the podiatry degree with its combination of lectures, practical sessions and clinical placements from the first year on really suited my learning style and set me up with the clinical skills to begin my journey as a podiatrist. One achievement I'm especially proud of was being selected for a studentship with the Counties-Manukau District Health Board to complete a clinical audit on podiatric intervention in the rheumatology setting. The audit ended up being published in the Journal of Foot and Ankle Research and an editorial was also published in the New Zealand Medical Journal."

Jonathan Chapman
 Musculoskeletal Extended Scope Podiatrist,
 Homerton University Hospital NHS
 Foundation Trust, London
 Bachelor of Health Science (Podiatry)

Psychology

Scan this QR code for details about courses, where your study could lead, and stories about our great graduates and students.



Psychology is a broad and exciting discipline that covers a range of approaches to studying and understanding behaviour. In the Psychology major you gain a broad understanding of psychological research and theory, and related ethical and legal issues. AUT psychology graduates are sought after because of their understanding of scientific research, and key interpersonal and interviewing skills.

What you study

YEAR 1

All health sciences students take the same courses in the first semester so you can develop an in-depth understanding of general healthcare. In Semester 2, you're introduced to the principles, theories, applications and methodologies of psychological practice and research.

YEAR 2

You deepen your understanding and knowledge of psychology and depending on your specific pathway, your courses could cover topics like abnormal psychology, cognitive psychology and social psychology.

YEAR 3

You learn to think ethically and critically in the context of professional psychology practice. You should choose psychology courses relevant to your future career prospects. Courses may cover areas like psychological analysis, biopsychology, positive psychology, health psychology and approaches to psychological interventions.

Study options

You can study the Bachelor of Business conjointly with the Bachelor of Health Science in Psychology. The Psychology major can also be completed as a double major with Public and Environmental Health in three years.

Career opportunities

- Government, health and social services roles
- Customer service
- Human resources
- Management development programmes
- Marketing
- Policy analysis and development
- Psychologist¹
- Social research

1. Registration as a professional psychologist requires postgraduate study. AUT offers a pathway to registration as a counselling psychologist.

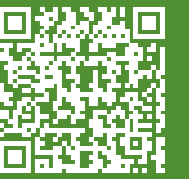


"I was intent on finding out more about how the mind works, and how I could apply this in my day-to-day life. I became really passionate about seeing how I could apply this in a human resources role, and using what I had learnt to contribute to wellbeing, learning and development in an organisation. AUT stood out as a university that valued creativity and collaboration, with a hands-on approach to learning and some amazing lecturers – enrolling at AUT was a no-brainer really. I'm lucky to now work in a tight-knit HR team, in a business of approximately 550 staff. It's the people that make it happen, and my role is about supporting them, which I'm really passionate about."

Caitlin Hardy
People & Culture Advisor, Hawkins
Bachelor of Health Science in Psychology

Bachelor of Health Science (Honours)

Scan this QR code for course details and where this qualification could lead you.



BHSc(Hons)/BHSc(Hons)Psych | AK3662

QUICK FACTS

Level	8
Points	120
Duration	1 year full-time, part-time available
Campus	North
Starts	3 March 2025
Apply by	28 Nov 2024 (psychology only)

Investigate and research a specific area of health science with this one-year honours programme. The Bachelor of Health Science (Honours) is aimed at high-achieving graduates of the Bachelor of Health Science. It's a great way to make your CV stand out and can also serve as a fast track into doctoral study.

You can either complete the standard pathway or specialise in psychology.

Entry requirements^{1,2}

Minimum entry requirements

Completed the Bachelor of Health Science with a B+ grade average or higher in level 7 courses in the selected subject area for this degree, or equivalent

Selection criteria

Interview will be required

English language requirements

IELTS (Academic) 6.5 overall with all bands 6.0 or higher; or equivalent.

What this qualification covers

This programme includes courses and a research dissertation on a specific health science topic of your choice, under the supervision of one of our experienced academic staff. Your individual course of study will be approved by the programme leader.

Standard pathway

Courses in this pathway further your understanding of your chosen area of practice, and explore topics like leadership, Māori and Pacific health and professional practice.

Psychology pathway – Bachelor of Health Science (Honours) in Psychology²

Courses in this pathway cover areas like psychological theory and interventions. Psychology students can add two years' postgraduate study to their honours degree to be eligible for registration.

1. Potential students are usually identified in the third year of their bachelor's degree. Your individual course of study will need to be approved by the programme leader.
2. To be admitted, you must have personal qualities that show suitability for this programme, including supplying references and satisfying a police check. An interview will normally be required.

Bachelor of Health Science (Physiotherapy) (Honours)

Scan this QR code for course details and where this qualification could lead you.



An ageing population with increasingly chronic and complex conditions means there's a growing demand for physiotherapy clinical services and physiotherapists with advanced skills in clinical research. Graduates will have advanced research skills that prepare them well for doctoral level study and a research-based career pathway.

Top students in the Bachelor of Health Science (Physiotherapy) will be invited to apply for this degree.

Entry requirements

Minimum entry requirements

- Must have completed 180 points at level 6 and 60 points at level 7 from the Bachelor of Health Science (Physiotherapy) with a B+ grade average or higher.
- A student who has already graduated with a Bachelor of Health Science (Physiotherapy) may not be admitted to the Bachelor of Health Science (Physiotherapy) (Honours).
- Admission is subject to the approval of the dean (or representative).

Selection criteria

Interview may be required

English language requirements

IELTS (Academic) 6.5 overall with all bands 6.0 or higher; or equivalent.

What this qualification covers

YEARS 1 & 2 AND SEMESTER 1, YEAR 3

You're enrolled in the Bachelor of Health Science (Physiotherapy) and need to complete courses to the required academic standard to be invited into the Bachelor of Health Science (Physiotherapy) (Honours). If you've been accepted into the honours programme, any courses you have completed in the bachelor's will be reassigned to the honours programme.

SEMESTER 2, YEAR 3

You study three courses to further your understanding of physiotherapy practice, as well as one research methods course to prepare you for your dissertation next year.

YEAR 4

The year will be arranged in four teaching blocks, and you spend the first three blocks completing your final-year clinical practice courses. In the last teaching block, you research a topic of your interest in your honours degree dissertation.

1. Invited students will start this honours degree after the first semester of Year 3 of their Bachelor of Health Science (Physiotherapy).

BHScPhty(Hons) | AK4662

QUICK FACTS

Level	8
Points	480
Duration	4 years full-time
Campus	North
Starts	21 July 2025

Career opportunities

As a graduate of this programme, you'll meet the preparatory education requirements for registration as a physiotherapist in Australia and New Zealand. You'll also have the research and critical thinking skills for further postgraduate study at master's degree or doctoral level, and to begin a clinical research career.

Diploma in Paramedic Science

Scan this QR code for course details and where this qualification could lead you.



DipPSc | AK1011

QUICK FACTS

Level	6
Points	120
Duration	1 year full-time
Campus	South
Starts	3 March & 21 July 2025

Career opportunities

Working for:

- St John
- Wellington Free Ambulance service
- New Zealand Defence Force (NZDF)
- Other pre-hospital medical providers

The Diploma in Paramedic Science is for students who want a career in pre-hospital emergency healthcare, primarily in an ambulance setting. After completing the Diploma in Paramedic Science you will have successfully met the requirements to apply for work as an Emergency Medical Technician (EMT) in New Zealand.

An emergency medical technician administers pre-hospital emergency care – looking after patients during the time between when an ambulance locates the patient and when that patient arrives at the hospital or treatment centre. EMTs are required to provide a high level of professional medical care to patients under a variety of circumstances.

Entry requirements

Minimum entry requirements

- Completion of Year 12
- Must be capable of meeting the Health Practitioners Competence Assurance Act (HPCA Act) and Children's Act 2014 requirements, including police clearance
- Must be 18 years or older by the first day of semester
- Minimum requirement of a learner drivers licence to apply

English language requirements

IELTS (Academic) 6.0 overall with all bands 5.5 or higher; or equivalent.

What this qualification covers

Courses you'll take may cover areas like paramedic theory and practice, human anatomy and physiology, and pathology. There's an emphasis on clinical practice, and you'll become familiar with assessing and communicating with patients, and out-of-hospital management of medical and trauma conditions.

Graduate Diploma in Psychotherapy Studies

Scan this QR code for course details and where this qualification could lead you.



The Graduate Diploma in Psychotherapy Studies is designed for health professionals and volunteers, as well as individuals interested in becoming a psychotherapist and focuses on a detailed understanding of human experience and behaviour.

Graduates who go on to complete the Master of Psychotherapy can apply for provisional membership of the New Zealand Association of Psychotherapists or the New Zealand Association of Child and Adolescent Psychotherapists (according to the course of study undertaken), and under an interim scope of practice with the Psychotherapists Board of Aotearoa New Zealand.

Entry requirements

Minimum entry requirements

- A bachelor's degree OR
- Relevant professional qualification or experience approved by the dean (or representative) to be equivalent to a bachelor's degree
- Interview may be required

The recommended background includes:

- Having engaged in at least six months of your own personal psychotherapy
- Evidence of people-helping experience (like counselling or similar)

English language requirements

IELTS (Academic) 6.5 overall with all bands 6.0 or higher; or equivalent.

What this qualification covers

You'll explore the theory and foundation skills of psychotherapy, and develop an understanding of human experience and human behaviour. There's an emphasis on self-awareness and experiential learning.

Those pursuing an adult psychotherapy focus take courses that cover areas like mental health, psychopathology and psychotherapy.

If you intend to pursue child and adolescent psychotherapy you take courses that cover areas like psychoanalytic concepts and theory, and gain skills in the observation of infants, children and adolescents.

You also need to engage in your own personal psychotherapy.

GradDipPsychotherapySt | AK3580

QUICK FACTS

Level	7
Points	120
Duration	1 year full-time, part-time available
Campus	North
Starts	3 March 2025
Apply by	28 Oct 2024

Career opportunities

This programme is designed to augment your skills for working in an area that requires you to form professional relationships with patients. It also contributes to the entry criteria for the Master of Psychotherapy.

Graduate Diploma in Health Science Graduate Certificate in Health Science

Scan this QR code for course details and where this qualification could lead you.



These programmes are designed for people with considerable work experience in health, sport or recreation who want to gain a qualification in their field. They're also suitable if you have a degree in another discipline and don't meet the entry criteria for postgraduate study. Both programmes include courses from the Bachelor of Health Science or Bachelor of Sport and Recreation.

Entry requirements

Minimum entry requirements

- A bachelor's degree OR
- Relevant professional qualification or experience approved by the Dean (or representative) to be equivalent to a bachelor's degree

English language requirements

IELTS (Academic) of 6.5 overall with all bands 6.0 or higher; or equivalent.

What these qualifications cover

You take approved undergraduate courses and will be guided to select your courses in your chosen subject area.

Subjects you can study include:

- Addictions
- Clinical child and adolescent psychotherapy
- Psychology
- Renal physiology

You can also choose other approved undergraduate courses from the Bachelor of Health Science or the Bachelor of Sport and Recreation.

Graduate Diploma in Health Science
GradDipHSc | AK1013

QUICK FACTS

Level	7
Points	120
Duration	1 year full-time, part-time available ¹
Campus	North & South ²
Starts	3 March & 21 July 2025

Graduate Certificate in Health Science
GradCertHSc | AK3757

QUICK FACTS

Level	7
Points	60
Duration	½ year full-time, 1 year part-time ¹
Campus	North & South ²
Starts	3 March & 21 July 2025

1. As not all courses are offered every semester, it may not be possible to complete the qualification in the timeframe specified.
2. Not all courses are offered at both locations.

Whakauru where wānanga

UNIVERSITY ENTRANCE

University admission to AUT bachelor's degrees

For New Zealand citizens and residents, and international students studying in a high school in New Zealand

To gain admission to bachelor's degrees, you must have met the requirements for University Entrance plus any specified admission requirements for a programme, such as specific subjects and interviews.

For more information on entry requirements, including entry requirements for international students visit aut.ac.nz/entryrequirements

Admission categories

You may be granted University Entrance under one of the following categories:

- NCEA University Entrance
- Ad Eundem Statum admission (at an equivalent level) – this includes Cambridge International Examinations (CIE) and International Baccalaureate Diploma Programme (IB)
- Discretionary Entrance
- Special Admission

Visit aut.ac.nz/entryrequirements to find out more details about these admission categories.

Common University Entrance requirements

Where programmes require a specific subject, it is expected that a student will have achieved a minimum of 14 NCEA credits in that subject (or equivalent), unless indicated otherwise. For a list of NCEA approved subjects for University Entrance visit the NZQA website, nzqa.govt.nz

	NCEA	CIE	IB ³
Overall	Require NCEA level 3 certificate which consists of 80 credits, including at least 60 credits at level 3 or higher. Can include up to 20 credits at level 2. Note: Credits to achieve NCEA level 3 may include unit standards from non-approved subjects. Subject credits Total of 42 level 3 credits including: • 14 credits from one approved subject • 14 credits from a second approved subject • 14 credits from a third approved subject	A minimum of 120 points on the New Zealand CAIE Tariff ¹ at A or AS level from an approved list (equivalent to NCEA approved subject list). Must include at least three subjects (excluding Thinking Skills) with grades D or above.	IB Diploma with minimum 24 points
Numeracy	At least 10 level 1 (or higher) numeracy credits (can be achieved through a range of subjects)	A minimum grade of D in IGCSE ² mathematics or any mathematics subject at AS or A level.	Any mathematics subject – IB Group 5
Literacy	Total of 10 level 2 (or higher) literacy credits including: • 5 reading credits • 5 writing credits From specific standards in a range of NZQA English language rich subjects	A minimum grade of E in English Language and/or English Literature subject at AS or A level.	Literature or language and literature (SL or HL) – IB Group 1, with English as the language

1. NZ Tariff (based on old UCAS Tariff) = system which converts AS and A level grades into points.

2. IGCSE = International General Certificate of Secondary Education.

3. New Zealand residents who have taken IB but have not been awarded the Diploma may apply for discretionary entrance.

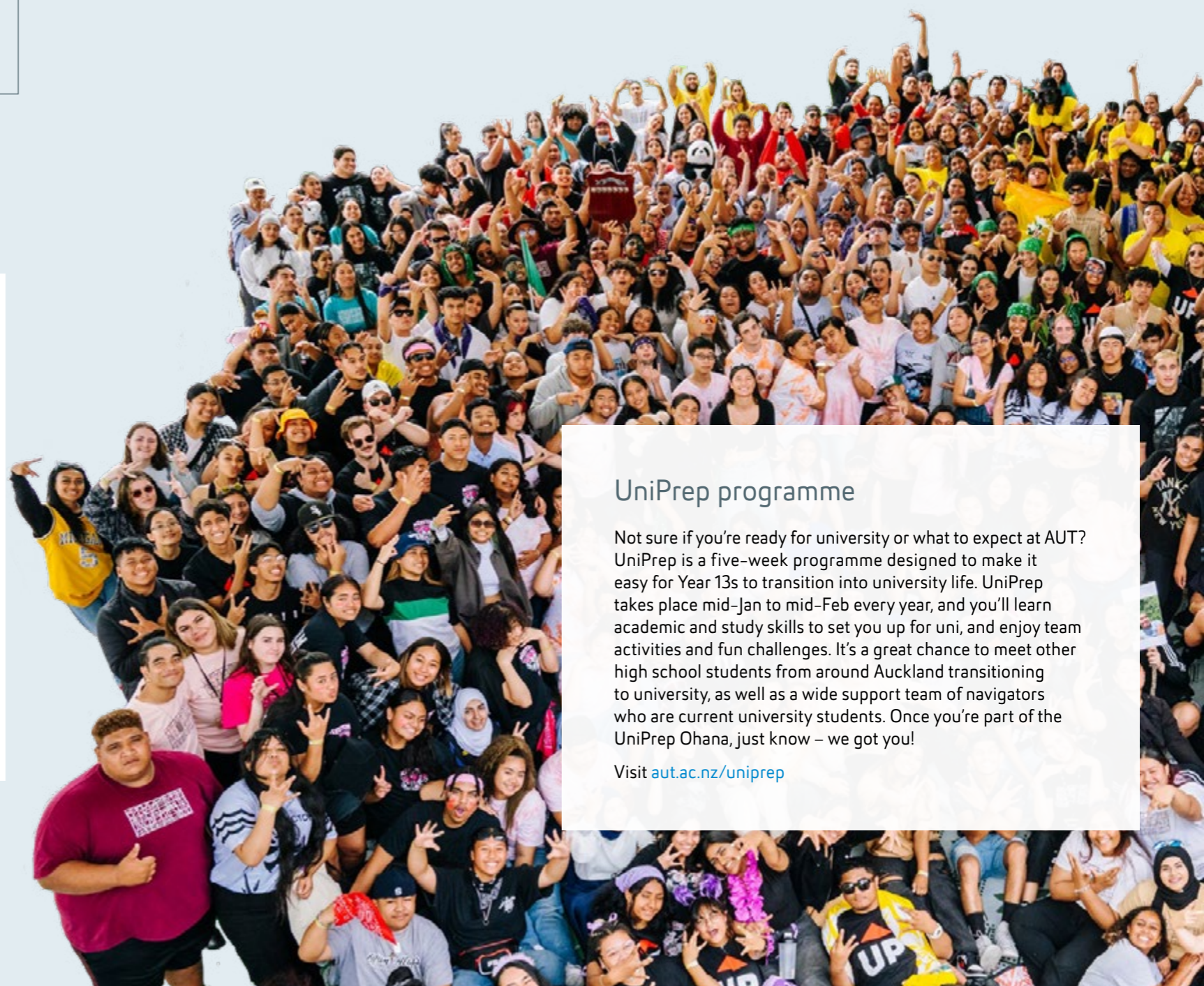
English language requirements

If you don't have English as your first language, you may have to show evidence of your English language skills. Visit aut.ac.nz/englishrequirements for details about English language testing and recognised English tests.

International students

Contact us for information regarding studying at AUT if you're not a citizen or permanent resident of New Zealand or Australia, or a citizen of the Cook Islands, Niue or Tokelau islands.

Visit aut.ac.nz/int/entryrequirements for entry requirements for specific countries. If you have any questions, you can contact us at aut.ac.nz/enquire



UniPrep programme

Not sure if you're ready for university or what to expect at AUT? UniPrep is a five-week programme designed to make it easy for Year 13s to transition into university life. UniPrep takes place mid-Jan to mid-Feb every year, and you'll learn academic and study skills to set you up for uni, and enjoy team activities and fun challenges. It's a great chance to meet other high school students from around Auckland transitioning to university, as well as a wide support team of navigators who are current university students. Once you're part of the UniPrep Ohana, just know – we got you!

Visit aut.ac.nz/uniprep

Ngā utu whakauru, ngā karahipi FEES & SCHOLARSHIPS

Cost is an important factor when thinking about university study. This page gives you an idea of the approximate tuition fees at AUT, and different options to help you fund your education including scholarships, student loans and allowances.

To give you an idea of approximate costs, the 2024 tuition fees are shown below (based on full-time study and completing 120 points per year). All fees are in NZ dollars and include GST. The 2025 tuition fees will be advertised on aut.ac.nz/fees as soon as they have been set. You may also need to pay additional fees for course materials or elective courses (check with your faculty if there are additional fees for your programme).

Domestic student tuition fees

First-time domestic students are entitled to one year of fees free.

Undergraduate programmes

Fee (per year): \$4,218 (for 60 points) – \$12,400 (for 120 points)¹
(\$3,645 – \$11,254 tuition fees
+ \$573 – \$1,146 student services levy)

Postgraduate programmes

Fee (per year): \$10,607 (for 120 points)¹
(\$9,461 tuition fees + \$1,146 student services levy)

1. Part-time students pay a proportion of the fee based on the number of academic points they are studying.

International student tuition fees

Undergraduate programmes

Fee (per year): \$19,173 (for 60 points) – \$46,746 (for 120 points)
(\$18,600 – \$45,600 tuition fees
+ \$573 – \$1,146 student services levy)

Postgraduate programmes

Fee (per year): \$43,046 (for 120 points)
(\$41,900 tuition fees + \$1,146 student services levy)

Please note that you must pay your fees in full by the date specified on your fees invoice.

To find out more about fees call **+64 9 921 9779** or **0800 AUT AUT** (0800 288 288).

Free fees for your university study¹

Eligible domestic students starting tertiary education may receive one year of full-time study fees-free. To check if you're eligible for fees-free study aut.ac.nz/fees

Student loans and allowances¹

If you're a full-time domestic student, you may qualify for a student loan or allowance. Student loans and allowances are administered and paid by StudyLink. The application process can take some time, so it's a good idea to apply early. You can apply for a student loan or student allowance before your enrolment at AUT is complete.

To find out more call **0800 88 99 00** or visit studylink.govt.nz

1. Domestic students only, not available to international students.

Financial assistance

We know that sometimes things happen and financial stress can impact your academic success. That's why we offer financial support that ranges from offering grocery or fuel vouchers, to helping with that unexpected bill.

StudyLink

Visit studylink.govt.nz for tools, tips and information to help you plan and understand the costs you will have while studying.

Scholarships and awards

Scholarships and awards are a great way to fund your university study. There is a wide range of scholarships and awards available to AUT students at all stages of their study including the Welcome to Auckland scholarship and Find Your Greatness scholarship (details below).

Visit the scholarships website for a full current list of scholarships offered by AUT and external funders, as well as application forms and closing dates. You can also contact AUT's Scholarships Office for advice on scholarships, awards and the scholarship application process.

2025 AUT Welcome to Auckland Scholarships

Because we recognise the challenges students may face when moving to Auckland, AUT's three-year Welcome to Auckland scholarships make a contribution towards students' accommodation and study fees. These scholarships recognise high-achieving secondary school students living outside of Auckland who intend to enrol in bachelor's degree study commencing in 2025.

2025 AUT Find Your Greatness Scholarships – School Leaver

AUT's Find Your Greatness undergraduate scholarships for school leavers reflect our commitment to creating great graduates. These three-year scholarships recognise students' academic achievement, as well as students' potential leadership ability and contribution to their school or community, cultural pursuits or sport at a representative level.

The Find Your Greatness scholarships are offered in the four categories below for study commencing in 2025:

- Academic Excellence
- All Rounder
- Hiki Ake (Lift Up)
- Kiwa (Māori and Pacific students)

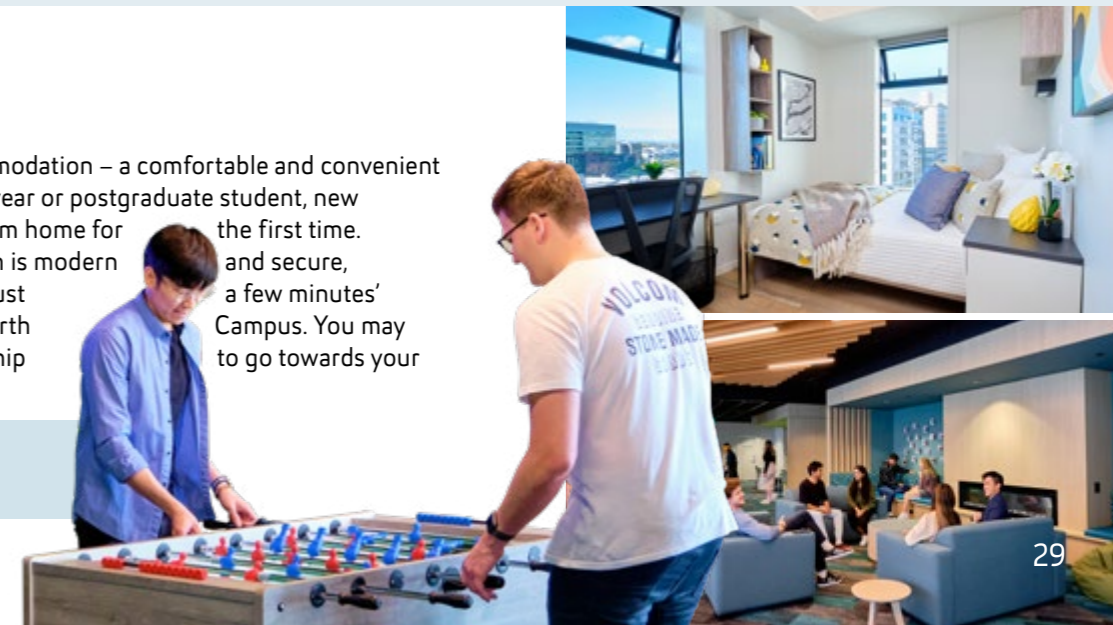
Applicants will be considered in all categories for which they are eligible.

To find out more call **+64 9 921 9837** or visit aut.ac.nz/scholarships

Accommodation

Check out our student accommodation – a comfortable and convenient option whether you're a first-year or postgraduate student, new to Auckland, or living away from home for the first time. AUT's student accommodation is modern and secure, offering a social community just a few minutes' walk away from our City or North Campus. You may even be eligible for a scholarship accommodation costs.

Visit aut.ac.nz/accommodation



He pēhea te tono

HOW TO APPLY

Below is the step-by-step guide to the application process.
For more information visit aut.ac.nz/apply

1 APPLY EARLY

Places are limited. Submit your application well before the semester starts.

APPLYING FOR 2025

- Semester 1
– apply by 2 December 2024
- Semester 2
– apply by 5 May 2025

2 COMPLETE THE APPLICATION FORM

- Apply online
- Indicate your programme(s) of choice and major (if known)

International students can also apply using an AUT approved international agent. For a list of AUT registered agents visit aut.ac.nz/international-agents

SUBMIT YOUR APPLICATION

WE ACKNOWLEDGE YOUR APPLICATION

- We will send you an acknowledgment email, which explains how to check the status of your application
- We will contact you if we need more information

WE ASSESS YOUR APPLICATION

- We assess your application to ensure you have met the entry criteria for the programme(s) you are applying for
- We consider your academic history and relevant experience to ensure you can succeed in your programme
- We let you know if your application has been successful

POSSIBLE OUTCOMES

CONFIRMED We would like to offer you a place to study at AUT

PROVISIONAL You have met some of the criteria for entry to your chosen programme of study and we would like to offer you a provisional place to study at AUT. If you don't meet the rest of the requirements, then this offer will be withdrawn

CONDITIONAL You have to meet the conditions and approvals listed in your conditional offer to be able to secure a formal offer of place

DECLINED If you don't meet the entry requirements or all places are taken, we may offer you an alternative programme

3 ACCEPT YOUR OFFER

It's important that you respond as soon as possible, particularly if you've been offered a place in a programme with limited places.

Once you've accepted your offer of place, we'll let you know how to enrol in the courses for your programme, and you can start to get excited about joining AUT.

Ready to apply?
apply.aut.ac.nz

Ētahi atu kōrero
FIND OUT MORE



aut.ac.nz

Need some help?

Visit aut.ac.nz/enquire, ask us your question and we'll call you back. Or you can phone **0800 AUT AUT** (0800 288 288) to speak to one of our friendly advisors. We can help with any questions you may have, and you could also book a course counselling session or a campus tour.

Campuses

City Campus

55 Wellesley Street East, Auckland Central

North Campus

90 Akoranga Drive, Northcote, Auckland

South Campus

640 Great South Road, Manukau, Auckland

Connect with us now:



AUT LIVE

Join us at our open day, AUT LIVE, on the City Campus and see everything AUT has to offer to help you make an educated decision about university study.

aut.ac.nz/live





0800 AUT AUT (0800 288 288)

Auckland University of Technology

Auckland, New Zealand

aut.ac.nz

Enquire now

aut.ac.nz/enquire

Connect with us now:



This booklet is printed on Satin matt paper which is certified to the Forest Stewardship Council® (FSC®) standard as an FSC Mix paper from well managed forests and other responsible sources.

We print using BIO-inks that contain materials that are based on renewable resources including wood resin (rosin, colophony), and vegetable oils, linseed oil and soybean oil and the printing company is FSC certified.