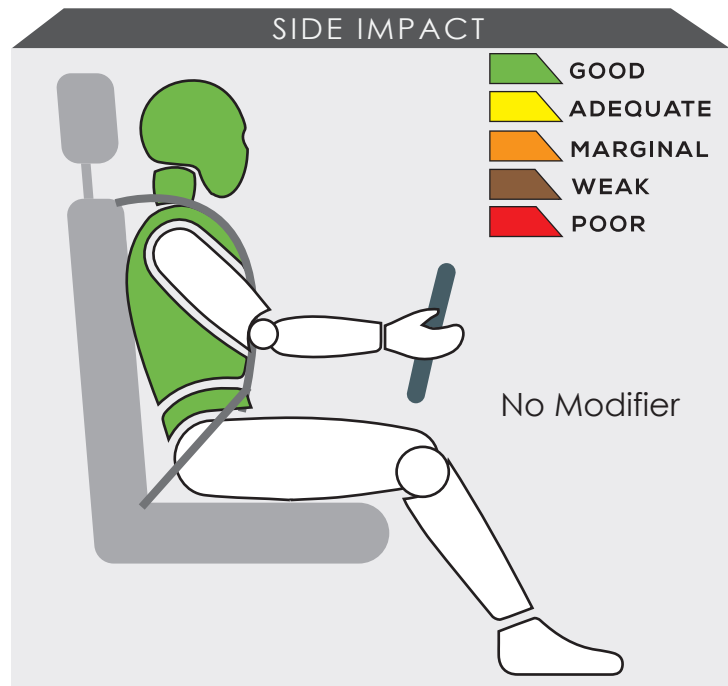
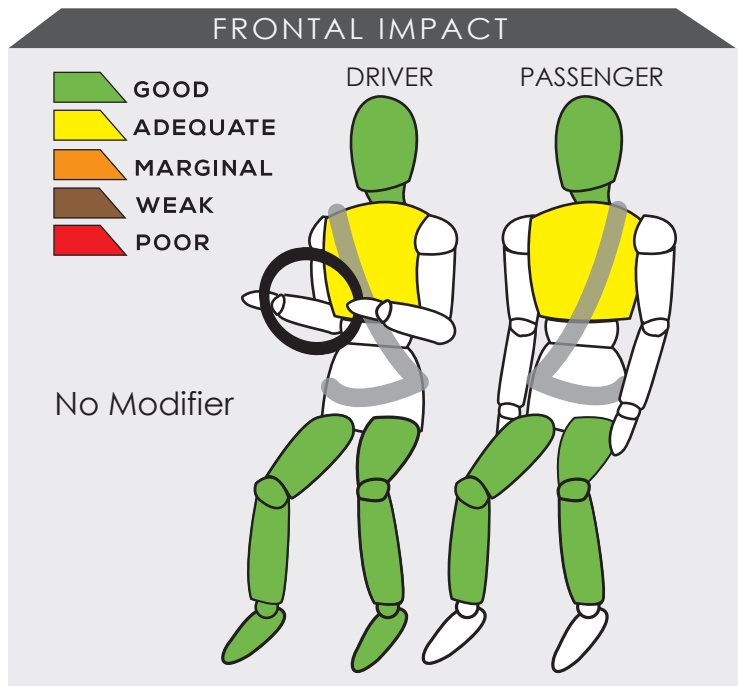


HONDA BR-V (2022)



Variant PRESTIGE TYPE WITH HONDA SENSING	Year Built 2022
Model Year 2022	Vehicle Category SUV
Engine Capacity 1.5 L	Kerb Mass 1306 kg
No. of Airbags 6	Test Lab JARI

TESTED VARIANT ORIGIN	INDONESIA	FOR	INDONESIA
OTHER ASEAN PRODUCTION (ALL VARIANTS)	INDONESIA	FOR	INDONESIA, THAILAND, PHILIPPINES, VIETNAM

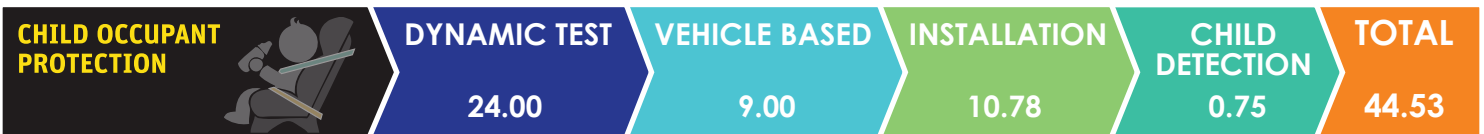


Data from the assessment showed there was adequate protection given to the both frontal occupants' chests.

The performance of HPT was confirmed with additional deployment test and its score was determined by Fitment Rating System (FRS).

SAFETY ITEMS (PASSIVE)

ITEMS		REGION	ASEAN
Airbags	Driver		Standard on all variants
	Passenger		Standard on all variants
	Side (2)		Standard on all variants
	Curtain (2)		Available as standard or optional
	Knee		Not available
Seatbelts	Retractor Pre-tensioner & Load Limiter for Driver		Standard on all variants
	Retractor Pre-tensioner & Load Limiter for Passenger		Standard on all variants



DYNAMIC TEST ASSESSMENT

18-MONTH-OLD CHILD		3-YEAR-OLD CHILD	
Restraint	: Honda Baby & Kids i-Size	Restraint	: Honda Baby & Kids i-Size
Facing	: Rearward Facing	Facing	: Rearward Facing
Installation	: ISOFIX & Supportleg	Installation	: ISOFIX & Supportleg
Frontal Impact	: 8.00	Frontal Impact	: 8.00
Side Impact	: 4.00	Side Impact	: 4.00
Total Performance	: 12.00	Total Performance	: 12.00

CRS INSTALLATION ASSESSMENT

CRS	DIRECTION	SEAT POSITION						
		FRONT	2ND ROW			3RD ROW		
		PASSENGER	LEFT	CENTRE	RIGHT	LEFT	CENTRE	RIGHT
Peg-Perego Primo Viaggio SL	Rwd	EXEMPT	PASS	FAIL	PASS	PASS	N/A	PASS
Joie Stages	Rwd	EXEMPT	PASS	FAIL	PASS	PASS	N/A	PASS
Joie Stages	Fwd	PASS	FAIL	FAIL	PASS	PASS	N/A	PASS
Combi Buon Junior Air	Fwd	PASS	PASS	PASS	PASS	PASS	N/A	PASS
Maxi Cosi Cabriofix + Family Fix	Rwd	EXEMPT	PASS	EXEMPT	PASS	EXEMPT	N/A	EXEMPT
Joie Every Stage Fx	Fwd	EXEMPT	PASS	EXEMPT	PASS	EXEMPT	N/A	EXEMPT
Joie Every Stage Fx	Rwd	EXEMPT	PASS	FAIL	PASS	PASS	N/A	PASS
Maxi Cosi Titan Pro	Fwd	EXEMPT	PASS	EXEMPT	PASS	EXEMPT	N/A	EXEMPT
Britax KidFix 2 R	Fwd	PASS	PASS	FAIL	PASS	PASS	N/A	PASS
Honda Baby & Kids i-Size*	Rwd	EXEMPT	PASS	EXEMPT	PASS	EXEMPT	N/A	EXEMPT
Honda Baby & Kids i-Size*	Rwd	EXEMPT	PASS	EXEMPT	PASS	EXEMPT	N/A	EXEMPT

PASS : Install without problem, FAIL : Safety critical problem, EXEMPT : Installation not allowed, N/A : Not available
 *Manufacturer's selection



ITEMS	ASEAN
--------------	--------------

Effective Braking & Avoidance
--

Anti-lock Braking System	Standard on all variants
Electronic Stability Control	Standard on all variants

Seatbelt Reminders

Driver	Standard on all variants
Front Passengers	Standard on all variants
Rear Passengers	Not available
Rear Seat Occupant Detection	Not available

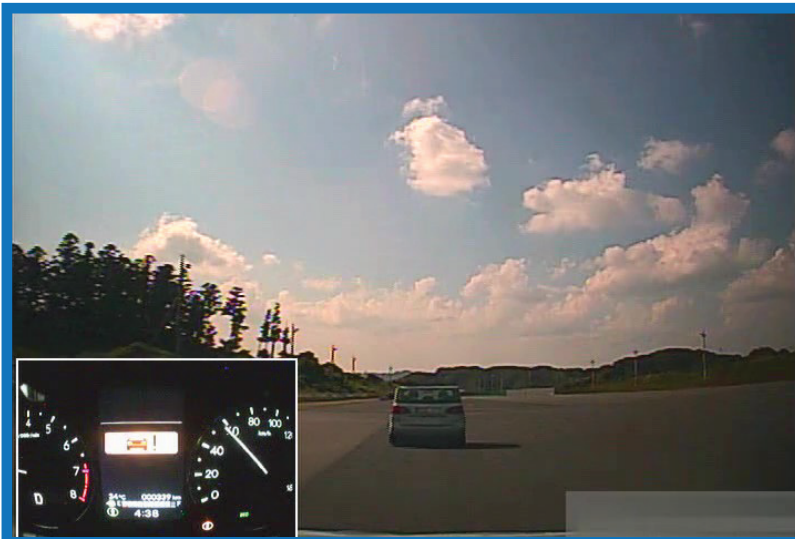
Autonomous Emergency Braking

City	Available as standard or optional
Inter-Urban	Available as standard or optional
Pedestrian	Available as standard or optional

Advanced Safety Assist Technologies
--

Lane Departure Warning System	Available as standard or optional
Forward Collision Warning System	Available as standard or optional
Lane Keep Assist	Available as standard or optional

AUTONOMOUS EMERGENCY BRAKING ASSESSMENT
--



ASEAN NCAP is introducing the Autonomous Emergency Braking (AEB) system functionality assessment in its new 2021-2025 protocol. In the protocol, ASEAN NCAP assessed the functionality and effectiveness of AEB City (car-to-car rear stationary) and AEB Inter-Urban (car-to-car rear moving) systems fitted inside the vehicle in performing emergency braking at several speeds against another preceding vehicle. The new Honda BR-V offers both the AEB City and Inter-Urban systems as standard or optional amongst its variants. In this assessment, ASEAN NCAP confirms that the technologies have functioned according to the ASEAN NCAP requirements.



ITEMS	ASEAN
Blind Spot Detection	
Nearside	Not available
Offside	Optional
Rear Visualization	
Advanced Rear Visualization	Not available
Headlight	
Auto High Beam	Available as standard or optional
Pedestrian	
Pedestrian Protection	Standard on all variants
Advanced Motorcyclist Safety Technology	
AEB for Motorcycle	Available as standard or optional

BLIND SPOT DETECTION ASSESSMENT





Starting from the 2017-2020 protocol, ASEAN NCAP had introduced assessment on the functionality of Blind Spot Technology fitted inside the assessed vehicle. ASEAN NCAP continues the assessment under the new Motorcyclist Safety pillar for the new 2021-2025 protocol. The newly assessed Honda BR-V is has Blind Spot Visualization (BSV) on the passenger side of the vehicle as either as standard or optional fitment. In this assessment, ASEAN NCAP confirms that the technology has functioned according to the ASEAN NCAP requirements on the left side area of the vehicle.



OVERALL RATING

The Honda BR-V first underwent ASEAN NCAP assessment in 2016 in which it obtained 5-Star rating for Adult Occupant Protection (AOP) and 4-Star for Child Occupant Protection (COP) categories. Nevertheless, based on ASEAN NCAP pre-requisite during the 2014-2016 assessment protocol, ASEAN NCAP had awarded its variants that were not equipped with Electronic Stability Control (ESC) and Seatbelt Reminder (SBR) for both frontal occupants as 4-Star AOP. The newly assessed Honda BR-V comes with 4 airbags, ESC, Anti-lock Braking System (ABS) and SBR as standard across all its variants. Nevertheless, majority of the BR-V's markets also offer variants with 6 airbags. The 7-seater SUV offers advanced safety assist technologies either as standard or optional equipment comprising Autonomous Emergency Braking (AEB) City, AEB Inter-Urban, AEB Pedestrian, AEB for Motorcycle, Auto High Beam (AHB), Child Presence Detection (CPD), Pedestrian Protection technology, Forward Collision Warning (FCW), Lane Keep Assist (LKA) and Lane Departure Warning (LDW). The new Honda BR-V has successfully achieved a total score of 77.02 points in this assessment. Hence, the score has made the SUV to be eligible to receive 5-Star ASEAN NCAP rating.

	AOP			COP			SAFETY ASSIST			MS			2021 - 2025 ASEAN NCAP RATING
	Item	Point	Max	Item	Point	Max	Item	Point	Max	Item	Point	Max	
	ODB	14.98	16.00	FRONTAL	16.00	16.00	EBA	6.00	6.00	BSD/BSV	2.60	8.00	
	SIDE	8.00	8.00	SIDE	8.00	8.00	SBR	3.00	6.00	ARV	-	4.00	
	HPT Evaluation	4.00	8.00	Installation	10.78	12.00	AEB City	1.88	2.50	AHB	1.50	2.00	
				Vehicle Based	9.00	13.00	AEB Inter-Urban	2.63	3.50	Ped. Protection	2.00	2.00	
				CPD	0.75	2.00	Advanced SATs	3.00	3.00	Advanced MST*	2.00	2.00	
Score		26.98	32.00		44.53	51.00		16.50	21.00		8.10	16.00	
Normalized Score		0.84			0.87			0.79			0.506		
Weighting		40%			20%			20%			20%		
Weighted Score		33.72			17.46			15.71			10.13		
Maximum Star Rating		5			5			5			5		
												OVERALL SCORE	
												77.02	
												5	

*Bonus Point