



Statistical Office of the Republic of Serbia



ISSN 0354-3641

BULLETIN

Labour Force Survey in The Republic of Serbia, 2021

682

Belgrade
2022

LABOUR FORCE SURVEY IN THE REPUBLIC OF SERBIA, 2021

Belgrade, 2022

Bulletin – Labour Force Survey in the Republic of Serbia, 2021

Published and printed by: Statistical Office of the Republic of Serbia, Belgrade, 5 Milana Rakića St.
Responsible: Miladin Kovačević, PhD, director

Manuscript prepared by: Vesna Pantelić, Milijana Smiljković, Slavica Novaković, Bogdan Šuluburić, Damjan Petrović,
Marija Vranić and Mirjana Ogrizović Brašanac

Sample selection and evaluation: Mirjana Ogrizović Brašanac

Editorial office

Manager: Vladimir Šutić

Members: Tatjana Savić, Jasmina Kostić - Simov and Sonja Radoičić

Design and preparation for printing: Department for development, preparation and visualization of statistical outputs
English translation: Milena Kovačević



PREFACE

In this publication, the Statistical Office of the Republic of Serbia (SORS) has announced the results of the Labor Force Survey for 2021.

Since 2015, the Survey has been implemented as a continuous research in the Republic of Serbia, and since 2021, the SORS has moved to the new, redesigned methodology of the Survey, in accordance with the new Regulation of the European Parliament and the Council. International recommendations and definitions were used in defining the basic labor force contingents, so that the information obtained from this survey is the most important source of data in the field of labor statistics, which are comparable in content and methodology with similar data from other countries.

Data in this survey are intended for a wide range of users in the country, and they are provided to numerous international organizations (Eurostat, International Labor Organization – ILO, World Bank, International Monetary Fund, Organization for Economic Co-operation and Development – OECD, United Nations Children's Fund – UNICEF, Education, Science and Culture Organization – UNESCO, etc.).

The bulletin consists of several parts. The first part contains an analysis of basic labor market indicators in 2021. The basic indicators of the population aged 15+ (rates and absolute values) is given in the second part. The third part presents the basic indicators of the employed population aged 15+. The fourth part contains basic indicators of the unemployed population, while indicators related to outside the labor force population and potentially active population can be found in the fifth part. Methodological explanations and the sample design are given at the end of the bulletin.

Belgrade, 2022

Director
Miladin Kovačević, PhD

PREFACE	3
LABOUR FORCE SURVEY – NEW METHODOLOGY SINCE 2021	9
ANNUAL ANALYSIS OF LABOUR FORCE SURVEY RESULTS, 2021	10
POPULATION AGED 15 AND OVER	13
1.1. Basic contingents of work force by age groups, 2021/2020	15
1.2. Activity, employment, unemployment and outside the labor force rates by age groups, 2021/2020	15
1.3. Population by activity status, age groups, region and type of settlement, 2021	16
1.4. Male population by activity status, age groups, region and types of settlements, 2021	18
1.5. Female population by activity status, age groups, region and type of settlement, 2021	19
1.6. Population by age groups, sex and activity, 2021 (in thous.)	20
1.7. Population by education, sex and activity, persons 15-89, 2021 (in thous.)	21
1.8. Person status by subjective opinion, sex, region and type of settlement, persons 15-89, 2021 (in thous.)	22
1.9. Activity, employment, unemployment and outside the labor force rates for persons age 15 + districts, 2021 (in %)	24
EMPLOYED	
2.1. Employed by age groups, sex, region and type of settlement, 2021 (in thous.)	29
2.2. Employed by level of education, sex, region and type of settlement, 2021 (in thous.)	30
2.3. Employed by professional status, sex, region and type of settlement, 2021. (in thous.)	31
2.4. Employed by usual working hours, sex, region and type of settlement, 2021 (in thous.)	32
2.5. Employed by usual working hours, professional status, 2021. (%)	33
2.6. Employed by usual working hours and major occupation groups, 2021 (%)	33
2.7. Employed by usual working hours and sector of activity, 2021 (%)	34
2.8. Employed by ownership and work hours, sex and region, 2021 (in thous.)	36
2.9. Employed by sector of activity, sex and region, 2021 (in thous.)	38
2.10. Employed by sector of activity and age group, 2021 (in thous.)	40
2.11. Employed by occupation, sex and region, 2021 (in thous.)	42
2.12. Employed by sector of activity and major occupation groups, 2021 (in thous.)	43
2.13. Employed by formality in employment, age groups, professional status, sex and region, 2021 (in thous.)	44
2.14. Share of employees working from home, at weekends, in the evening or at night by major occupation groups, 2021 (%)	46
2.15. Share of employed working from home, at weekends, in the evening or at night by sector of activity, 2021 (%)	46
2.16. Employed by search of another job, sex and region, 2021 (in thous.)	47
2.17. Employees by type of contract and employment rights, sex, region and type of settlement, 2021 (in thous.)	49
2.18. Employees by sector of activity, sex, region and type of settlement, 2021 (in thous.)	51
2.19. Employees by occupation, sex, region and type of settlement, 2021 (in thous.)	53
2.20. Employees by permanency of employment, sex, region and type of settlement, 2021 (in thous.)	55
2.21. Employees by kind of ownership, sex, region and type of settlement, 2021 (in thous.)	57

UNEMPLOYED

3.1. Unemployed by age groups, sex, region and type of settlement, 2021. (in thous.)	61
3.2. Unemployed by highest completed education level, sex, region and type of settlement, 2021 (in thous.)	62
3.3. Unemployed by duration of employment search, sex, region and type of settlement, 2021 (in thous.)	64
3.4. Unemployed by having previous experience, professional status on previous job, sex, region and type of settlement, 2021 (in thous.)	65
3.5. Unemployed aged 15-64 by National Employment Service records, sex, region and type of settlement, 2021 (in thous.)	67

OUTSIDE THE LABOR FORCE

4.1. Population outside the labor force by age groups, sex, region and type of settlement, 2021 (in thous.)	71
4.2. Population outside the labor force, aged 15-89, by education, sex, region and type of settlement, 2021. (in thous.)	71
4.3. Population outside the labor force, aged 15-74, by desire and employment opportunities, sex and region, 2021 (in thous.)	72
4.4. Population outside the labor force, aged 15-89, by previous work experience, sources of income, sex and region, 2021 (in thous.)	73
4.5. Underutilized and potential labor force, aged 15-74, 2021 (in thous.)	75

METHODOLOGICAL EXPLANATIONS

GRAPHS

Graph 1. Status of persons aged 15-24 in activity, 2021 (in %)	16
Graph 2. Employed, unemployed and Outside the labor force structure by regions, 2021 (in %)	17
Graph 3. Employed, unemployed and Outside the labor force structure by sex, 2021 (in %)	17
Graph 4. Employed, unemployed and outside the labor force structure according to the highest level of completed education, 2021. (in %)	23
Graph 5. Employed by reason of absence from work, 2021 (in thous.)	35
Graph. 5. Employed by reason of absence from work, 2021 (in thous.)	35
Graph 6. Employed by reasons of part-time employment by sex (in %), 2021	36
Graph 7. Self-employed by decision-makers on their work hours, 2021 (%)	37
Graph 7a. Employed workers by decision-makers on their work hours, 2021 (%)	37
Graph 8. Employed by activity sector and age group, (in %), 2021.	41
Graph. 9. Formal/informal employed by activity sector, 2021 (in thous.)	45
Graph. 10. Employed persons by specific types of work hours, 2021 (in thous.)	47
Graph.11 Professional status in additional job, 2021 (in%)	48
Graph. 12. Self-employed by occupation and sex (in %), 2021	48
Graph. 13. Employed workers obliged to inspect the work of other workers, by sex (in %), 2021	52

Graph 14. Structure of employed workers by paid and unpaid overtime work hours, 2021 (in %)	52
Graph 15. Structure of employed workers by occupation and sex (in %), 2021	54
Graph 16. Employees by duration of temporary work (permanent, seasonal or occasional) in thousands, 2021	56
Graph 17. Employed workers by reason of temporary, seasonal or occasional employment, 2021 (in %)	56
Graph 18. Unemployed by area of education (in thous.), 2021	62
Graph 19. Main reasons of employment termination of unemployed who stopped working in previous seven years, by sex, 2021 (in thous.)	63
Graph 20. Unemployed persons according to the National Employment Service records, 2021 (%)	63
Graph 21. Unemployed by employment search methods, 2021 (in thous.)	64
Graph 22. Unemployed by occupation at previous job and sex (in %), 2021	66
Graph. 23. Population outside the labor force not in search of employment due to child care or adult disabled person care, by sex, 2021 (in %)	72
Graph 24. Major reasons of employment termination of population outside the labor force, who stopped working in the past 7 years, by sex, 2021 (in thous.)	74
MAPS	
Rate of employment by areas, 2021	25
Rate of unemployment by areas, 2021	26



LABOUR FORCE SURVEY – NEW METHODOLOGY SINCE 2021

The Statistical Office of the Republic of Serbia (SORS) has published data in this bulletin according to the new methodology of the Labor Force Survey, which has been applied since January 2021.

Due to the change in methodology, the data in this bulletin is not comparable with the data published in the bulletins before 2021.

The most significant methodological change refers to the definition of the employed or to the exclusion from the contingent of employed persons who produce agricultural goods and services intended for personal consumption, i.e. without placing the product on the market.

More information on methodological changes and their effects on the main statistical indicators can be found in the special publication “Labour Force Survey, new methodology 2021”, via the link <https://publikacije.stat.gov.rs/G2021/PdfE/G202122002.pdf>

In order to ensure comparability of basic indicators for the period before 2021 with indicators collected in accordance with the new methodology from 2021, the most important indicators have been revised, with the revised data available in the database on the SORS website.

In this bulletin data for 2021 are compared with revised data for 2020. Given that data were revised for basic indicators only and that the set of revised data is limited, there is no possibility of deeper and more accurate structural analysis.

Graph 1. Employment and unemployment rates, population aged 15+, 2014–2020 (%)

Original series (old methodology) and revised series (new methodology)





ANNUAL ANALYSIS OF LABOUR FORCE SURVEY RESULTS, 2021

Basic indicators

In 2021, the number of the employed amounted to 2 848 800, and compared to 2020 it is bigger by 72 100 (or 2.6%). The number of unemployed in 2021 amounted to 352 400, and compared to 2020 it is bigger by 53 200 (or 17.8%), while the number of Outside the labor force population has reduced by 162 500 (or 5.8%) amounting to 2 655 700 in 2021.

Year-on-year, the employment rate increased by 1.5 percentage points (pp) and the unemployment rate by 1.3 pp, and they amounted in 2021 to 48.6% and 11.0% respectively. At the same time, the outside the labor force population rate decreased by 2.5 pp, amounting to 45.3% in 2021.

Such YOY movements of the basic contingents of population on the labor market, which primarily refer to the increase in unemployment due to the reduction of Outside the labor force population, are a consequence of changes caused by the crisis due to the coronavirus pandemic in 2020. Namely, in 2020, individuals who were unable to search for employment or start working due to the virus spread preventative measures, were not considered unemployed according to the definitions of the International Labor Organization - ILO, which is applied in the Survey, but were classified in the Outside the labor force population contingent. Hence, the increase in the unemployment rate from 9.7% in 2020 to 11.0% in 2021 and the decrease in the outside the labor force population rate from 47.8% to 45.3% in the same period can be considered as indicators of recovery as they are returning to levels before the crisis caused by the pandemic. In the same period, the employment rate increased from 47.1% to 48.6%.

The activity rate of the population aged 15+ in 2021 at the level of the Republic of Serbia is 54.7%. The highest activity rate was recorded in the Belgrade region (57.6%), followed by the Region of Šumadija and Western Serbia and the Region of Vojvodina (55.7% and 54.5% respectively). The region of Southern and Eastern Serbia has the lowest activity rate (50.0%).

The employment rate of the population aged 15+ in 2021 at the level of the Republic of Serbia is 48.6%. The Belgrade region has the highest employment rate (52.5%), followed by the Region of Vojvodina and the Region of Šumadija and Western Serbia with employment rates of 49.3% and 48.7% respectively, while the Region of Southern and Eastern Serbia has the lowest value (43.2%).

The unemployment rate of the population aged 15+ in 2021 at the level of the Republic of Serbia amounted to 11.0%. At the regional level, this rate had the lowest value in the Belgrade region (8.8%), followed by the Region of Vojvodina (9.5%) and the Region of Šumadija and Western Serbia (12.6%). The worst situation on the labor market is recorded in the Region of Southern and Eastern Serbia, which is shown by the highest unemployment rate (13.6%).

Position of young people in the labor market

The contingent of young people aged 15-24 continued to decrease in 2021 by 10 500, or 1.5% compared to 2020.

As in the total population, in the youth population there has been a noticeable decrease in the population outside the labor force (-44,600) and an increase in the active population (+34,100). The number of employed young people aged 15-24 increased by 27 600 (or 19.3%) in 2021, and the number of unemployed increased by 6 600 (or 12.0%) compared to 2020.



The employment rate of the youth population in 2021 was 24.5%, which is 4.3 pp more than in 2020. The youth unemployment rate is 26.4% and it is lower by 1.2 pp than last year. The outside the labor force population rate is lower by 5.3 pp, amounting to 66.7% in 2021.

Observed by regions, the highest youth unemployment rate (32.3%), with the lowest employment rate (18.5%) at the same time, was recorded in the Region of Southern and Eastern Serbia. The lowest unemployment rate, at 22.7%, was recorded in the Belgrade region, while the highest employment rate, at 29.1%, was recorded in the Region of Vojvodina.

Position of women on the labour market

The employment rate of women in 2021 was 41.3%, which is an increase of 1.2 pp compared to 2020. In the male population, that rate increased by 1.8 pp in the same period amounting to 56.5% in 2021.

Compared to 2020, the female unemployment rate increased by 1.9 pp, while the unemployment rate in the male population increased by 0.8 pp. These rates amounted to 12.1% and 10.2% respectively in 2021.

The outside the labor force population rate in the female population was 53.0% in 2021, which is a decrease of 2.4 pp compared to 2020. In the male population, this rate decreased in the same period by 2.6 pp and it was 37.1% in 2021.

Traditionally, the more unfavorable position of women in the labor market is reflected in a significantly lower employment rate and a higher unemployment rate and outside the labor force population rate in the female population compared to the male population.

In 2021, the employment rate of women in relation to the employment rate of men was lower by 15.2 pp. The difference in the unemployment rate of women and men is 1.9 pp in favor of men, while the Outside the labor force population rate in the female population is higher by 15.9 pp than in the male population.

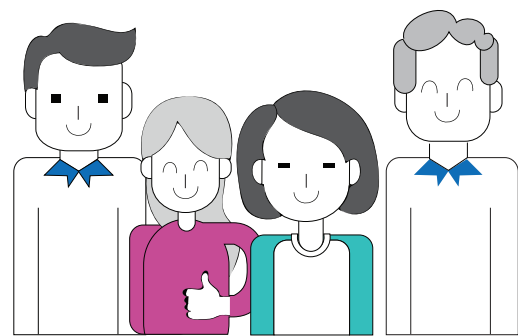
Workers employed on permanent basis are the most represented contingent in total employment

According to the professional status, employed can be divided into three main groups: self-employed (with or without employees), employees and unpaid family workers. In 2021, the number of self-employed was 484 400, the number of employees (working for an employer) was 2 192 400, and the number of unpaid family workers amounted to 172 000.

Observing the structure of employed by type of employment, employed on the permanent basis are notably the most represented category – 1 690 900, followed by fixed-term employees, which numbered 421 700 in 2021, while there were 79 800 seasonal and occasional employees in 2021.

The largest share of young employed (up to 34 years of age) in the Information and Communication sector of activity

Looking at the age structure of employed by sector of activity, the Information and Communication stands out as the sector with the largest share of young employed (up to 34 years of age) – 44.2%, and the lowest share of older employed (over 55 years of age) – 8.9%. The only other sector of activity where the share of employed under the age of 34 in the sector total employment exceeds 40% is Arts, Entertainment and Recreation. On the other hand, the "oldest" sector of activity is Agriculture, Forestry and Fishing, where the share of employed over 55 is 45.1%, while the share of young employed in this sector is the lowest and amounts to 16.3%.



Population aged 15 and over

1.1. Basic contingents of work force by age groups, 2021/2020

	2021	2020 (r)	Changes in relation to previous year	
		(thous.)	(thous.)	%
Population aged 15 and over	5856.9	5894.2	-37.3	-0.6
Active	3201.2	3076.0	125.3	4.1
Employed	2848.8	2776.7	72.1	2.6
Unemployed	352.4	299.2	53.2	17.8
Outside the labor force	2655.7	2818.2	-162.5	-5.8
Young-age population (15–24)	694.8	705.3	-10.5	-1.5
Active	231.5	197.3	34.1	17.3
Employed	170.3	142.7	27.6	19.3
Unemployed	61.2	54.6	6.6	12.0
Outside the labor force	463.4	508.0	-44.6	-8.8
Working-age population (15–64)	4386.6	4445.1	-58.5	-1.3
Active	3081.7	2951.6	130.1	4.4
Employed	2730.6	2653.7	76.9	2.9
Unemployed	351.2	297.9	53.3	17.9
Outside the labor force	1304.9	1493.5	-188.6	-12.6

(r) – Revised data

1.2. Activity, employment, unemployment and outside the labor force rates by age groups, 2021/2020

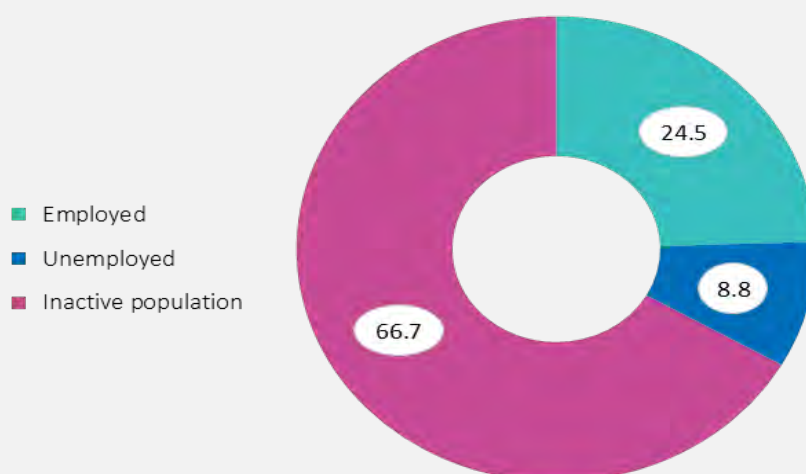
	2021	2020 (r)	Changes in relation to the previous year
	%	%	in percentages, points
Population aged 15 and over			
Activity rate	54.7	52.2	2.5
Employment rate	48.6	47.1	1.5
Unemployment rate	11.0	9.7	1.3
Outside the labor force rate	45.3	47.8	-2.5
Young-age population (15–24)			
Activity rate	33.3	28.0	5.3
Employment rate	24.5	20.2	4.3
Unemployment rate	26.4	27.7	-1.2
Outside the labor force rate	66.7	72.0	-5.3
Working-age population (15–64)			
Activity rate	70.3	66.4	3.9
Employment rate	62.2	59.7	2.5
Unemployment rate	11.4	10.1	1.3
Outside the labor force rate	29.7	33.6	-3.9

(r) – Revised data

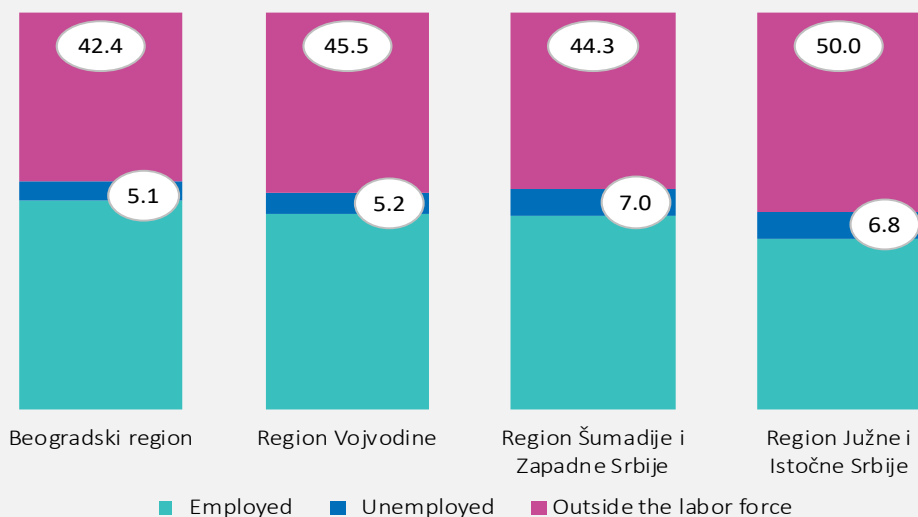
1.3. Population by activity status, age groups, region and type of settlement, 2021.

	Republic of Serbia							
	Total	Srbija – sever		Srbija – jug			type of settlement	
		Beo-gradski region	Region Vojvodine	Region Šumadije i Zapadne Srbije	Region Južne i Istočne Srbije	Region Kosovo i Metohija	urban	other
Population aged 15 and over (in thous.)	5856.9	1438.0	1569.6	1615.1	1234.2	...	3431.0	2425.9
Active	3201.2	828.4	856.0	900.0	616.8	...	1863.1	1338.1
Employed	2848.8	755.2	774.5	786.4	532.7	...	1648.9	1199.9
Unemployed	352.4	73.2	81.5	113.6	84.1	...	214.2	138.2
Outside the labor force	2655.7	609.6	713.6	715.1	617.4	...	1567.9	1087.8
Activity rate (%)	54.7	57.6	54.5	55.7	50.0	...	54.3	55.2
Employment rate (%)	48.6	52.5	49.3	48.7	43.2	...	48.1	49.5
Unemployment rate (%)	11.0	8.8	9.5	12.6	13.6	...	11.5	10.3
Outside the labor force rate (%)	45.3	42.4	45.5	44.3	50.0	...	45.7	44.8
Young-age population (15–24) (in thous.)	694.8	156.1	188.0	200.9	149.8	...	409.1	285.7
Active	231.5	49.1	71.3	70.2	40.9	...	111.3	120.2
Employed	170.3	37.9	54.8	50.0	27.7	...	78.7	91.6
Unemployed	61.2	11.2	16.5	20.3	13.2	...	32.6	28.6
Outside the labor force	463.4	107.0	116.6	130.7	109.0	...	297.8	165.5
Activity rate (%)	33.3	31.4	37.9	34.9	27.3	...	27.2	42.1
Employment rate (%)	24.5	24.3	29.1	24.9	18.5	...	19.2	32.1
Unemployment rate (%)	26.4	22.7	23.2	28.9	32.3	...	29.3	23.8
Outside the labor force rate (%)	66.7	68.6	62.1	65.1	72.7	...	72.8	57.9
Working-age population (in thous.) (15–64)	4386.6	1094.4	1194.1	1196.1	902.1	...	2588.9	1797.8
Active	3081.7	810.3	832.6	846.9	591.9	...	1829.5	1252.3
Employed	2730.6	737.4	751.4	733.6	508.2	...	1615.9	1114.7
Unemployed	351.2	72.9	81.2	113.3	83.7	...	213.6	137.6
Outside the labor force	1304.9	284.1	361.4	349.2	310.1	...	759.4	545.5
Activity rate (%)	70.3	74.0	69.7	70.8	65.6	...	70.7	69.7
Employment rate (%)	62.2	67.4	62.9	61.3	56.3	...	62.4	62.0
Unemployment rate (%)	11.4	9.0	9.8	13.4	14.1	...	11.7	11.0
Outside the labor force rate (%)	29.7	26.0	30.3	29.2	34.4	...	29.3	30.3

Graph 1. Status of persons aged 15-24 in activity, 2021 (in %)



Graph. 2. Employed, unemployed and outside the labor force structure by regions, 2021 (in %)



Graph. 3. Employed, unemployed and outside the labor force structure by sex, 2021 (in %)



1.4. Male population by activity status, age groups, region and types of settlements, 2021.

	Republic of Serbia							
	Total	Srbija – sever		Srbija – jug			Type of settlement	
		Beo-gradski region	Region Vojvodine	Region Šumadije i Zapadne Srbije	Region Južne i Istočne Srbije	Region Kosovo i Metohija	Urban	Other
Aged 15 and over (in thous.)	2825.3	667.7	758.6	790.5	608.6	...	1608.9	1216.4
Active	1775.8	430.0	487.4	506.9	351.5	...	983.3	792.5
Employed	1595.4	396.0	442.1	449.1	308.1	...	874.3	721.1
Unemployed	180.4	34.0	45.2	57.8	43.4	...	109.0	71.4
Outside the labor force	1049.5	237.6	271.3	283.6	257.0	...	625.6	423.9
Activity rate (%)	62.9	64.4	64.2	64.1	57.8	...	61.1	65.1
Employment rate (%)	56.5	59.3	58.3	56.8	50.6	...	54.3	59.3
Unemployment rate (%)	10.2	7.9	9.3	11.4	12.3	...	11.1	9.0
Outside the labor force rate (%)	37.1	35.6	35.8	35.9	42.2	...	38.9	34.9
Young age (15–24) (in thous.)	357.6	80.1	96.9	103.1	77.5	...	208.0	149.6
Active	145.7	30.0	44.0	45.0	26.7	...	68.1	77.6
Employed	109.9	24.3	34.0	32.9	18.7	...	49.4	60.4
Unemployed	35.8	5.8	9.9	12.1	8.0	...	18.6	17.2
Outside the labor force	211.9	50.1	52.9	58.1	50.8	...	140.0	72.0
Activity rate (%)	40.7	37.5	45.4	43.6	34.5	...	32.7	51.9
Employment rate (%)	30.7	30.3	35.1	31.9	24.1	...	23.8	40.4
Unemployment rate (%)	24.6	19.2	22.6	26.9	30.0	...	27.4	22.1
Outside the labor force rate (%)	59.3	62.5	54.6	56.4	65.5	...	67.3	48.1
Working age (15–64) (in thous.)	2193.9	527.7	602.1	603.7	460.3	...	1266.4	927.5
Active	1699.3	418.1	471.3	474.6	335.3	...	962.1	737.2
Employed	1519.9	384.4	426.2	417.1	292.2	...	853.6	666.3
Unemployed	179.5	33.7	45.1	57.5	43.1	...	108.5	70.9
Outside the labor force	494.6	109.7	130.8	129.1	125.0	...	304.3	190.2
Activity rate (%)	77.5	79.2	78.3	78.6	72.8	...	76.0	79.5
Employment rate (%)	69.3	72.8	70.8	69.1	63.5	...	67.4	71.8
Unemployment rate (%)	10.6	8.1	9.6	12.1	12.9	...	11.3	9.6
Outside the labor force rate (%)	22.5	20.8	21.7	21.4	27.2	...	24.0	20.5

1.5. Female population by activity status, age groups, region and type of settlement, 2021.

	Republic of Serbia							
	Total	Srbija – sever		Srbija – jug			Type of settlement	
		Beo-gradski region	Region Vojvodine	Region Šumadije i Zapadne Srbije	Region Južne i Istočne Srbije	Region Kosovo i Metohija	Urban	Other
Aged 15 and over (in thous.)	3031.6	770.3	811.0	824.6	625.6	...	1822.1	1209.5
Active	1425.4	398.4	368.6	393.1	265.3	...	879.8	545.6
Employed	1253.4	359.1	332.3	337.3	224.6	...	774.6	478.8
Unemployed	172.0	39.2	36.3	55.8	40.7	...	105.2	66.8
Outside the labor force	1606.2	371.9	442.4	431.5	360.3	...	942.3	663.8
Activity rate (%)	47.0	51.7	45.5	47.7	42.4	...	48.3	45.1
Employment rate (%)	41.3	46.6	41.0	40.9	35.9	...	42.5	39.6
Unemployment rate (%)	12.1	9.8	9.8	14.2	15.3	...	12.0	12.2
Outside the labor force rate (%)	53.0	48.3	54.5	52.3	57.6	...	51.7	54.9
Young age (15–24) (in thous.)	337.2	76.0	91.1	97.8	72.3	...	201.1	136.1
Active	85.8	19.1	27.4	25.3	14.1	...	43.2	42.6
Employed	60.5	13.7	20.7	17.1	9.0	...	29.3	31.2
Unemployed	25.3	5.4	6.6	8.2	5.2	...	14.0	11.4
Outside the labor force	251.4	57.0	63.7	72.6	58.2	...	157.9	93.6
Activity rate (%)	25.4	25.1	30.0	25.8	19.5	...	21.5	31.3
Employment rate (%)	17.9	18.0	22.8	17.5	12.4	...	14.6	22.9
Unemployment rate (%)	29.5	28.3	24.2	32.3	36.6	...	32.3	26.7
Outside the labor force rate (%)	74.6	74.9	70.0	74.2	80.5	...	78.5	68.7
Working age (15–64) (in thous.)	2192.8	566.7	592.0	592.4	441.7	...	1322.5	870.3
Active	1382.4	392.2	361.3	372.2	256.6	...	867.4	515.0
Employed	1210.7	353.0	325.2	316.5	216.0	...	762.3	448.4
Unemployed	171.7	39.2	36.1	55.8	40.6	...	105.1	66.6
Outside the labor force	810.4	174.5	230.7	220.2	185.1	...	455.1	355.3
Activity rate (%)	63.0	69.2	61.0	62.8	58.1	...	65.6	59.2
Employment rate (%)	55.2	62.3	54.9	53.4	48.9	...	57.6	51.5
Unemployment rate (%)	12.4	10.0	10.0	15.0	15.8	...	12.1	12.9
Outside the labor force rate (%)	37.0	30.8	39.0	37.2	41.9	...	34.4	40.8

1.6. Population by age groups, sex and activity, 2021. (in thous.)

	Total	Active	Employed	Unemployed	Outside the labor force
Total	5856.9	3201.2	2848.8	352.4	2655.7
15–19 years	342.9	50.3	33.8	16.5	292.6
20–24	351.9	181.2	136.6	44.6	170.8
25–29	400.3	316.5	268.2	48.3	83.7
30–34	448.9	392.1	345.9	46.3	56.8
35–39	481.6	421.9	372.4	49.4	59.8
40–44	500.7	440.5	399.2	41.3	60.3
45–49	474.5	405.8	366.4	39.4	68.7
50–54	447.4	355.7	326.0	29.7	91.7
55–59	448.6	304.2	281.5	22.7	144.4
60–64	489.8	213.5	200.6	12.9	276.2
65–69	533.9	73.1	72.0	1.1	460.7
70–74	373.2	30.6	30.4	/	342.6
75 +	563.2	15.8	15.8	-	547.4
Male	2825.3	1775.8	1595.4	180.4	1049.5
15–19 years	175.5	32.7	23.2	9.5	142.8
20–24	182.1	113.0	86.7	26.3	69.1
25–29	205.8	178.3	152.1	26.2	27.5
30–34	228.8	212.7	191.2	21.5	16.1
35–39	243.6	225.5	201.3	24.2	18.1
40–44	255.1	236.1	216.6	19.5	19.1
45–49	237.5	216.1	198.8	17.3	21.4
50–54	219.5	188.2	173.2	14.9	31.4
55–59	215.4	167.6	156.4	11.2	47.8
60–64	230.6	129.3	120.3	9.0	101.3
65–69	244.7	45.6	44.8	/	199.0
70–74	163.5	20.9	20.8	/	142.6
75 +	223.3	9.9	9.9	-	213.4
Female	3031.6	1425.4	1253.4	172.0	1606.2
15–19 years	167.4	17.6	10.6	7.0	149.8
20–24	169.9	68.2	49.9	18.3	101.7
25–29	194.5	138.3	116.1	22.2	56.2
30–34	220.2	179.4	154.6	24.8	40.7
35–39	238.0	196.4	171.1	25.2	41.7
40–44	245.6	204.4	182.6	21.8	41.2
45–49	237.0	189.7	167.5	22.1	47.3
50–54	227.9	167.6	152.8	14.8	60.3
55–59	233.2	136.6	125.1	11.5	96.6
60–64	259.2	84.3	80.3	3.9	174.9
65–69	289.2	27.5	27.2	/	261.7
70–74	209.7	9.7	9.6	/	200.0
75 +	339.9	5.9	5.9	-	334.0

1.7. Population by education, sex and activity, persons 15-89, 2021. (in thous.)

	Total	Active	Employed	Unemployed	Outside the labor force
Persons (15-89)	5833.4	3201.2	2848.8	352.4	2632.2
No formal education	51.4	4.0	2.5	1.5	47.4
Primary	1528.5	454.4	395.3	59.1	1074.1
Secondary	3070.8	1879.0	1661.6	217.4	1191.8
Higher	1182.7	863.9	789.4	74.5	318.9
Early school leavers (aged 18-24), in thous. ⁽¹⁾	30.6	17.2	11.3	5.9	13.3
Early school leavers rate (aged 18-24), (%) ⁽²⁾	6.3	7.9	7.1	10.3	5.0
NEET- Persons age 15–24 not employed and not attending education or training (in thous.)	114.2	53.2	-	53.2	61.0
NEET rate (Share of people age 15–24 not employed and not attending education or training) (%) ⁽³⁾	16.4	23.0	-	86.9	13.2
Male (15-89)	2815.9	1775.8	1595.4	180.4	1040.1
No formal education	12.4	1.8	1.2	/	10.6
Primary	631.2	263.9	232.4	31.5	367.3
Secondary	1642	1126.8	1006.7	120.1	515.3
Higher	530.2	383.3	355	28.3	146.9
Early school leavers (aged 18-24), in thous. ⁽¹⁾	18.4	12.1	7.9	4.2	6.3
Early school leavers rate (aged 18-24), (%) ⁽²⁾	7.4	8.8	7.7	12.3	5.6
NEET- Persons age 15–24 not employed and not attending education or training (in thous.)	60.5	32.2	-	32.2	28.3
NEET rate (Share of people age 15–24 not employed and not attending education or training) (%) ⁽³⁾	16.9	22.1	-	89.9	13.4
Female (15-89)	3017.60	1425.40	1253.40	172.00	1592.10
No formal education	39.0	2.2	1.2	/	36.8
Primary	897.3	190.5	162.9	27.6	706.8
Secondary	1428.8	752.2	655.0	97.3	676.5
Higher	652.5	480.5	434.3	46.2	172.0
Early school leavers (aged 18-24), in thous. ⁽¹⁾	12.2	5.2	3.4	1.7	7.0
Early school leavers rate (aged 18-24), (%) ⁽²⁾	5.2	6.4	6.0	7.3	4.6
NEET- Persons age 15–24 not employed and not attending education or training (in thous.)	53.7	21.0	-	21.0	32.7
NEET rate (Share of people age 15–24 not employed and not attending education or training) (%) ⁽³⁾	15.9	24.4	-	82.7	13.0

¹⁾ Persons age 18 to 24 with completed primary school as the highest level of education, who are not attending education or training.

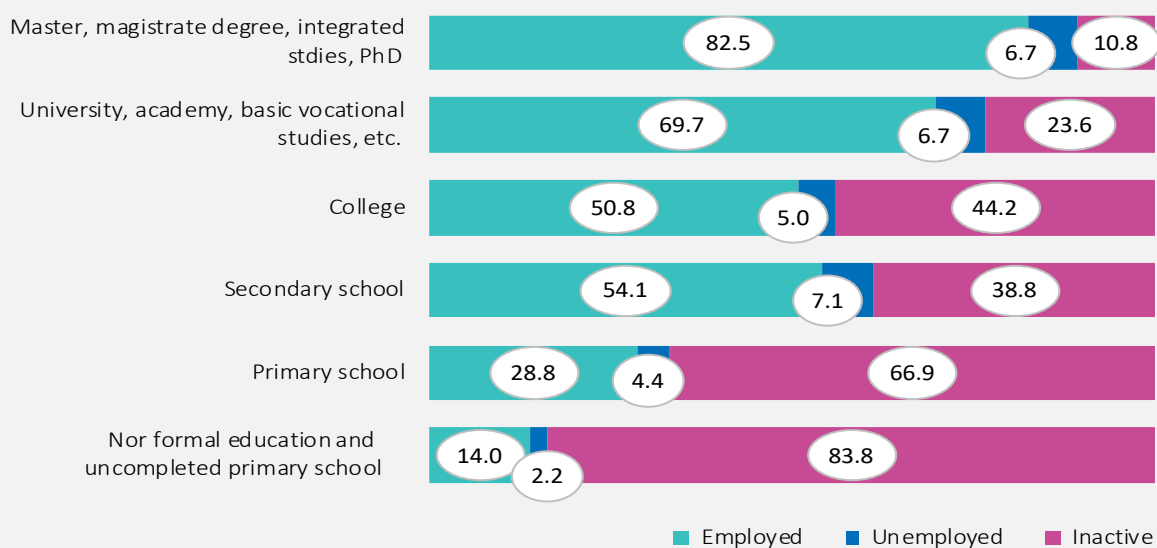
²⁾ Share of people age 18 to 24 with completed primary school as the highest level of education, who are not attending education or training in the total population of the given age.

³⁾ NEET rate includes share of persons age 15–24 who are not employed, not attending education or training in the total population of the given age.

1.8. Person status by subjective opinion, sex, region and type of settlement, persons 15-89, 2021. (in thous.)

	Republic of Serbia							
	Total	Srbija – sever		Srbija – jug			type of settlement	
		Beo-gradski region	Region Vojvodine	Region Šumadije i Zapadne Srbije	Region Južne i Istočne Srbije	Region Kosovo i Metohija	urban	other
Persons (15-89)	5833.4	1429.4	1565.6	1609.5	1228.8	...	3416.7	2416.7
Employed	2432.3	696.2	676.4	622.8	436.8	...	1527.4	904.8
Unemployed	872.6	162.3	226.4	262.3	221.6	...	463.6	409.1
Retired	1580.5	372.4	413.1	441.5	353.6	...	935.6	644.9
Person unable to work due to long-term health problem	74.2	18.4	21.3	18.9	15.6	...	36.1	38.2
Pupil/student, postgraduate student, unpaid interns	488.4	117.7	120.8	138.7	111.3	...	321.5	166.9
Person doing housework in their household (househusband, housewife)	363.2	55.9	103.5	121.0	82.7	...	121.5	241.7
Person serving the military service	1.4	/	/	/	/	...	/	/
Other	18.8	5.7	3.1	3.6	6.4	...	9.2	9.6
Volunteers	2.0	/	/	/	/	...	1.3	/
Male (15- 89)	2815.8	664.3	757.1	788.0	606.4	...	1603.8	1212.1
Employed	1353.7	361.4	384.1	361.0	247.2	...	799.7	554.0
Unemployed	467.3	78.2	123.1	143.2	122.8	...	236.4	230.9
Retired	697.0	154.0	175.7	200.0	167.3	...	390.1	306.9
Person unable to work due to long-term health problem	38.4	10.2	11.3	9.2	7.7	...	18.8	19.6
Pupil/student, postgraduate student, unpaid interns	224.5	55.2	54.5	62.8	52.0	...	150.5	74.0
Person doing housework in their household (househusband, housewife)	22.8	2.0	6.4	9.5	4.9	...	2.6	20.2
Person serving the military service	/	-	/	-	-	...	-	/
Other	11.4	3.0	1.8	2.3	4.3	...	5.1	6.3
Volunteers	/	/	/	/	/	...	/	/
Female (15-89)	3017.6	765.1	808.5	821.5	622.4	...	1812.9	1204.6
Employed	1078.6	334.8	292.3	261.9	189.6	...	727.7	350.9
Unemployed	405.3	84.1	103.3	119.1	98.8	...	227.2	178.2
Retired	883.6	218.4	237.4	241.5	186.3	...	545.5	338.1
Person unable to work due to long-term health problem	35.8	8.3	10.0	9.7	7.8	...	17.3	18.5
Pupil/student, postgraduate student, unpaid interns	263.9	62.4	66.3	75.9	59.3	...	171.0	92.9
Person doing housework in their household (househusband, housewife)	340.3	53.9	97.0	111.6	77.8	...	118.9	221.4
Person serving the military service	1.4	/	/	/	/	...	/	/
Other	7.4	2.7	1.3	1.3	2.1	...	4.1	3.3
Volunteers	1.3	/	/	/	/	...	/	/

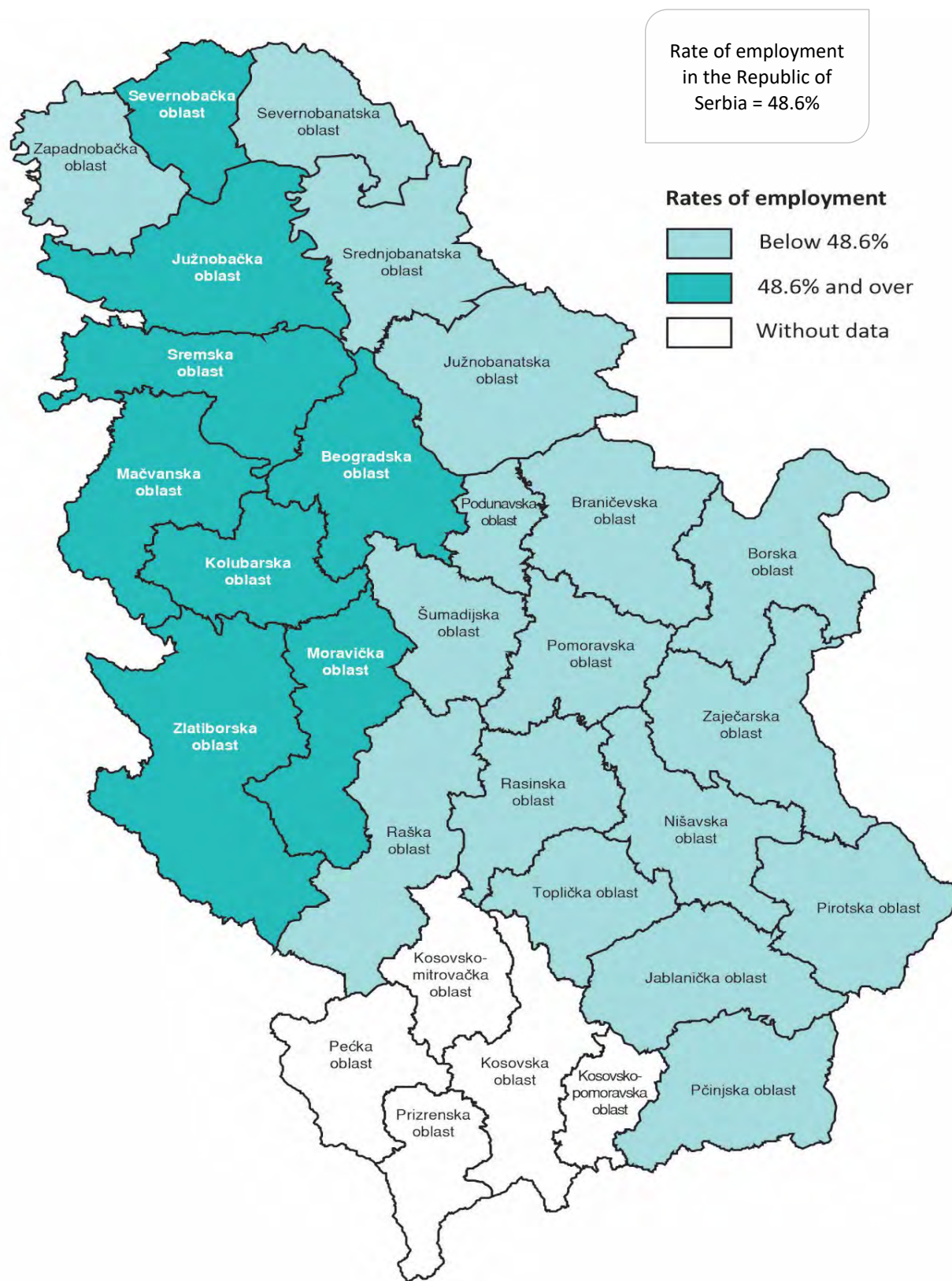
Graph. 4. Employed, unemployed and outside the labor force structure according to the highest level of completed education, 2021. (in %)



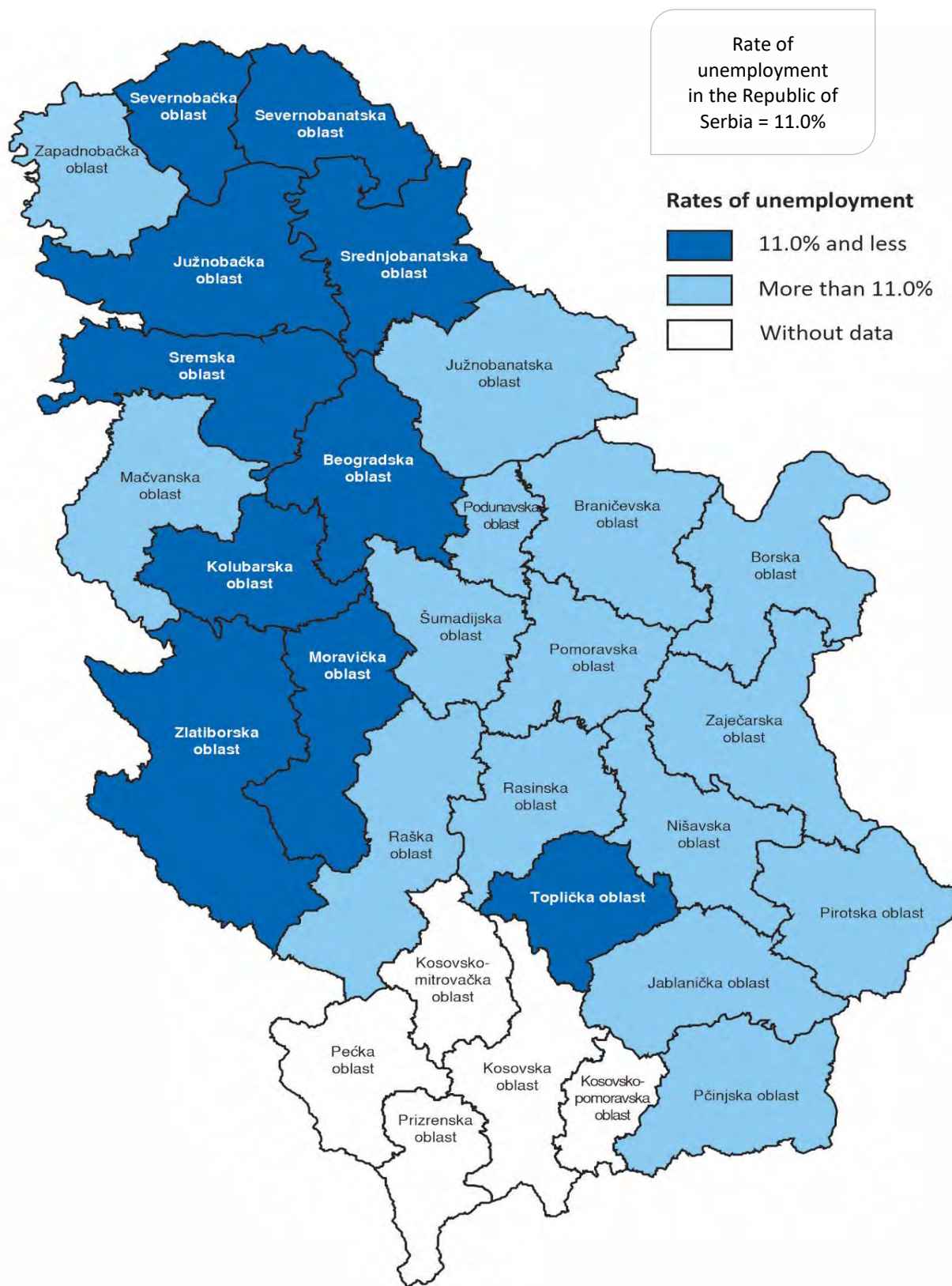
1.9. Activity, employment, unemployment and outside the labor force rates for persons age 15 + districts, 2021 (in %)

	Activity rate	Employment rate	Unemployment rate	Outside the labor force rate
City of Belgrade	57.6	52.5	8.8	42.4
North Bačka District	55.1	51.0	7.4	44.9
Central Banat district	52.4	46.8	10.7	47.6
North Banat district	51.0	45.8	10.2	49.0
South Banat district	52.0	46.1	11.3	48.0
West Bačka district	51.5	45.3	12.0	48.5
South Bačka district	57.0	52.4	8.1	43.0
Srem district	56.0	50.4	9.9	44.0
Mačva district	60.1	52.9	12.0	39.9
Kolubara district	63.0	60.0	4.7	37.0
Podunavlje district	53.1	45.6	14.1	46.9
Braničevo district	51.3	44.5	13.4	48.7
Šumadija district	55.0	46.7	15.0	45.0
Pomoravlje district	49.8	42.4	14.8	50.2
Bor district	48.7	40.6	16.6	51.3
Zaječar district	45.0	35.9	20.1	55.0
Zlatibor district	56.9	51.5	9.6	43.1
Moravica district	58.7	54.5	7.1	41.3
Raška district	50.4	39.6	21.3	49.6
Rasina district	54.2	46.7	13.8	45.8
Nišava district	48.7	43.2	11.2	51.3
Toplica district	50.0	44.9	10.4	50.0
Pirot district	45.0	39.6	12.0	55.0
Jablanica district	54.3	47.0	13.4	45.7
Pčinja district	49.4	41.7	15.6	50.6

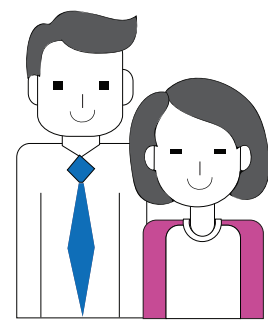
Maps 1. Rate of employment by areas, 2021



Maps 2. Rate of unemployment by areas, 2021



2



Employed

2.1. Employed by age groups, sex, region and type of settlement, 2021 (in thous.)

	Republic of Serbia							
	Total	Srbija – sever		Srbija – jug			Type of settlement	
		Beo-gradski region	Region Vojvodine	Region Šumadije i Zapadne Srbije	Region Južne i Istočne Srbije	Region Kosovo i Metohija	Urban	Other
Employed (15–89)	2848.8	755.2	774.5	786.4	532.7	...	1648.9	1199.9
15–24 years	170.3	37.9	54.8	50.0	27.7	...	78.7	91.6
25–34	614.1	176.7	171.2	150.9	115.2	...	359.5	254.6
35–44	771.7	225.5	211.9	194.1	140.2	...	492.0	279.7
45–54	692.4	182.8	187.5	186.5	135.6	...	420.1	272.3
55–64	482.1	114.4	126.1	152.1	89.5	...	265.6	216.6
65 +	118.2	17.8	23.0	52.9	24.5	...	33.0	85.2
Male	1595.4	396.0	442.1	449.1	308.1	...	874.3	721.1
15–24 years	109.9	24.3	34.0	32.9	18.7	...	49.4	60.4
25–34	343.3	89.9	97.8	87.4	68.2	...	186.3	157.0
35–44	417.9	117.5	116.6	106.5	77.3	...	254.0	163.9
45–54	372.1	93.5	101.0	101.4	76.2	...	218.2	153.8
55–64	276.7	59.2	76.8	89.0	51.7	...	145.6	131.1
65 +	75.5	11.6	15.9	32.0	16.0	...	20.7	54.8
Female	1253.4	359.1	332.3	337.3	224.6	...	774.6	478.8
15–24 years	60.5	13.7	20.7	17.1	9.0	...	29.3	31.2
25–34	270.7	86.8	73.4	63.6	47.0	...	173.2	97.5
35–44	353.7	108.0	95.3	87.5	62.9	...	237.9	115.8
45–54	320.3	89.4	86.5	85.1	59.3	...	201.9	118.4
55–64	205.4	55.1	49.3	63.2	37.8	...	120.0	85.4
65 +	42.7	6.1	7.1	20.8	8.6	...	12.3	30.4

2.2. Employed by level of education, sex, region and type of settlement, 2021 (in thous.)

	Republic of Serbia							
	Total	Srbija – sever		Srbija – jug			Type of settlement	
		Beo-gradski region	Region Vojvodine	Region Šumadije i Zapadne Srbije	Region Južne i Istočne Srbije	Region Kosovo i Metohija	Urban	Other
Employed (15–89)	2848.8	755.2	774.5	786.4	532.7	...	1648.9	1199.9
No formal education	2.5	/	1.2	/	/	...	/	1.9
Primary	395.3	39.8	108.6	162.5	84.4	...	93.3	302.0
Secondary	1661.6	396.6	473.3	469.1	322.7	...	907.9	753.7
Higher	789.4	318.3	191.3	154.4	125.3	...	647.0	142.3
Male	1595.4	396.0	442.1	449.1	308.1	...	874.3	721.1
No formal education	1.2	/	/	/	/	...	/	1.1
Primary	232.4	21.9	68.4	91.2	50.9	...	54.4	178.0
Secondary	1006.7	235.3	291.8	283.6	195.9	...	526.2	480.5
Higher	355.0	138.4	81.2	74.3	61.1	...	293.6	61.4
Female	1253.4	359.1	332.3	337.3	224.6	...	774.6	478.8
No formal education	1.2	/	/	/	/	...	/	/
Primary	162.9	17.9	40.2	71.3	33.5	...	38.9	124.0
Secondary	655.0	161.2	181.5	185.4	126.8	...	381.8	273.2
Higher	434.3	179.9	110.1	80.1	64.2	...	353.4	80.9

2.3. Employed by professional status, sex, region and type of settlement, 2021. (in thous.)

	Republic of Serbia							
	Total	Srbija – sever		Srbija – jug			Type of settlement	
		Beo-gradski region	Region Vojvodine	Region Šumadije i Zapadne Srbije	Region Južne i Istočne Srbije	Region Kosovo i Metohija	Urban	Other
Employed (15–89)	2848.8	755.2	774.5	786.4	532.7	...	1648.9	1199.9
Self-employed with employees	97.8	28.1	25.0	27.5	17.3	...	67.2	30.6
Self-employed w/o employees	386.6	70.4	98.9	137.3	80.1	...	145.8	240.8
Employees	2192.4	645.6	623.7	522.7	400.3	...	1418.6	773.8
Unpaid family worker	172.0	11.1	26.9	99.0	35.0	...	17.3	154.7
Working age (15–64)	2730.6	737.4	751.4	733.6	508.2	...	1615.9	1114.7
Self-employed with employees	93.2	27.1	22.9	26.3	17.0	...	64.1	29.2
Self-employed w/o employees	324.6	63.8	88.3	106.9	65.6	...	134.2	190.4
Employees	2171.8	637.6	616.4	519.4	398.4	...	1403.9	767.9
Unpaid family worker	140.9	8.9	23.9	80.9	27.2	...	13.7	127.2
Male								
Employed (15–89)	1595.4	396.0	442.1	449.1	308.1	...	874.3	721.1
Self-employed with employees	71.1	18.4	17.9	21.5	13.3	...	48.2	22.9
Self-employed w/o employees	302.4	49.7	76.8	112.8	63.1	...	101.4	201.1
Employees	1169.4	324.4	337.4	287.8	219.8	...	717.0	452.4
Unpaid family worker	52.4	3.5	10.0	27.0	11.8	...	7.8	44.7
Working age (15–64)	1519.9	384.4	426.2	417.1	292.2	...	853.6	666.3
Self-employed with employees	68.0	17.7	16.5	20.6	13.1	...	46.1	21.8
Self-employed w/o employees	249.7	44.4	67.8	86.5	51.0	...	92.7	157.0
Employees	1156.9	319.3	332.7	286.1	218.8	...	708.3	448.6
Unpaid family worker	45.3	3.0	9.2	24.0	9.2	...	6.4	38.9
Female								
Employed (15–89)	1253.4	359.1	332.3	337.3	224.6	...	774.6	478.8
Self-employed with employees	26.7	9.7	7.1	6.0	4.0	...	19.0	7.7
Self-employed w/o employees	84.2	20.7	22.1	24.5	17.0	...	44.4	39.8
Employees	1022.9	321.2	286.3	234.9	180.5	...	701.6	321.3
Unpaid family worker	119.6	7.5	16.9	72.0	23.2	...	9.6	110.0
Working age (15–64)	1210.7	353.0	325.2	316.5	216.0	...	762.3	448.4
Self-employed with employees	25.3	9.3	6.4	5.6	3.9	...	17.9	7.3
Self-employed w/o employees	74.9	19.4	20.5	20.5	14.5	...	41.4	33.5
Employees	1014.9	318.3	283.7	233.4	179.6	...	695.7	319.2
Unpaid family worker	95.6	5.9	14.6	57.0	18.1	...	7.3	88.3

2.4. Employed by usual working hours, sex, region and type of settlement, 2021 (in thous.)

	Republic of Serbia							
	Total	Srbija – sever		Srbija – jug			Type of settlement	
		Beo-gradski region	Region Vojvodine	Region Šumadije i Zapadne Srbije	Region Južne i Istočne Srbije	Region Kosovo i Metohija	Urban	Other
Employed (15–89)	2848.8	755.2	774.5	786.4	532.7	...	1648.9	1199.9
1–14 hours	21.8	4.9	6.9	6.6	3.5	...	9.8	11.9
15–35	150.6	31.9	36.5	53.8	28.4	...	64.9	85.7
36–48	2183.0	639.1	611.4	534.1	398.4	...	1411.4	771.6
49–59 hours	160.0	27.7	35.0	66.6	30.7	...	58.3	101.7
More than 60 work hours	174.7	24.2	43.4	77.5	29.7	...	49.0	125.7
Usual work hours varying week by week	158.7	27.5	41.2	48.0	42.1	...	55.4	103.3
Male	1595.4	396.0	442.1	449.1	308.1	...	874.3	721.1
1–14 hours	9.0	1.8	3.2	2.6	1.5	...	3.4	5.6
15–35	73.8	16.1	16.4	27.2	14.0	...	31.6	42.2
36–48	1162.6	322.4	332.2	287.5	220.4	...	717.8	444.9
49–59 hours	111.8	19.2	28.3	43.1	21.1	...	44.1	67.6
More than 60 work hours	130.2	18.9	31.6	58.1	21.6	...	39.0	91.2
Usual work hours varying week by week	107.9	17.5	30.4	30.6	29.4	...	38.4	69.5
Female	1253.4	359.1	332.3	337.3	224.6	...	774.6	478.8
1–14 hours	12.7	3.1	3.7	4.0	2.0	...	6.4	6.3
15–35	76.8	15.8	20.1	26.5	14.3	...	33.3	43.5
36–48	1020.4	316.6	279.2	246.5	178.0	...	693.6	326.7
49–59 hours	48.3	8.4	6.7	23.5	9.6	...	14.2	34.1
More than 60 work hours	44.5	5.3	11.8	19.3	8.1	...	10.0	34.5
Usual work hours varying week by week	50.8	10.0	10.8	17.4	12.6	...	17.0	33.8

2.5. Employed by usual working hours, professional status, 2021. (%)

	1-14 hours	15-35	36-48	49-59 hours	More than 60 work hours	Usual work hours varying week by week
Employed by professional status						
Self-employed with employees	/	2.9	64.8	10.6	14.8	6.5
Self-employed w/o employees	2.0	13.5	26.8	16.3	20.2	21.2
Employees	0.3	2.5	90.8	2.7	2.1	1.6
Unpaid family worker	3.6	24.3	14.7	16.5	20.9	20.0

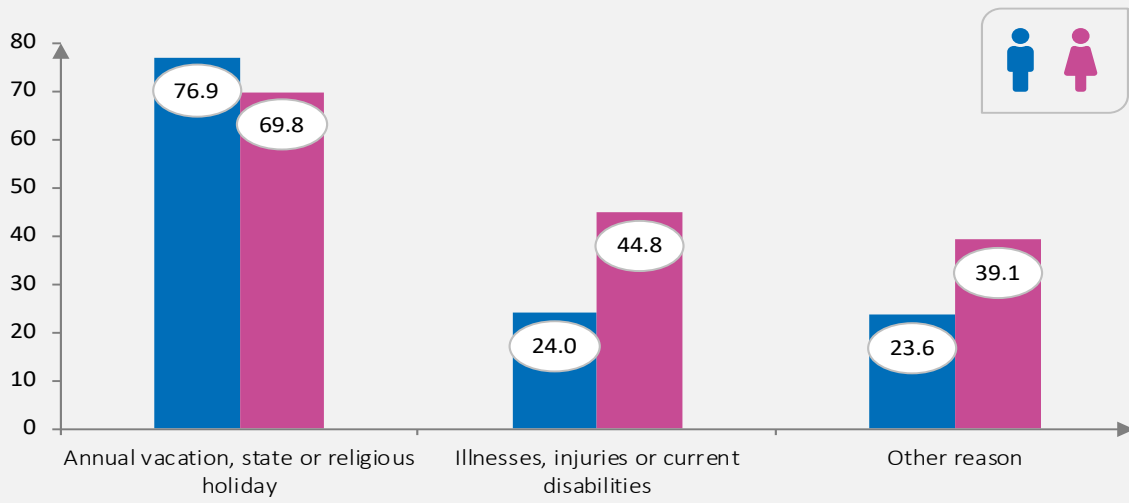
2.6. Employed by usual working hours and major occupation groups, 2021 (%)

	1-14 hours	15-35	36-48	49-59 hours	More than 60 work hours	Usual work hours varying week by week
Managers (directors), officials and legislators	/	2.2	76.2	7.3	8.3	5.7
Professional and art experts	0.8	3.8	90.5	1.6	1.0	2.3
Technicians and associate professionals	0.5	2.4	92.3	1.8	1.4	1.6
Administrative workers	/	1.7	95.8	0.8	1.0	0.6
Service and trade occupations	0.4	4.2	85.4	4.4	3.3	2.3
Farmers, foresters, fisherman and related	2.3	17.0	13.9	18.9	27.1	20.7
Craft workers and related	0.4	3.4	79.1	6.6	5.9	4.6
Machine and plant operators, assemblers and drivers	/	1.3	88.0	3.8	3.7	3.2
Simple occupations	1.5	9.2	70.4	5.7	3.7	9.5
Military occupations	-	-	99.1	/	/	-

2.7. Employed by usual working hours and sector of activity, 2021 (%)

	1–14 hours	15–35	36–48	49–59 hours	More than 60 work hours	Usual work hours varying week by week
Agriculture, forestry and fishing	2.1	16.3	18.8	17.5	24.5	20.8
Mining and quarrying	/	-	95.7	/	/	/
Manufacturing	0.3	1.6	92.8	2.3	1.4	1.6
Electricity and gas supply	/	/	96.9	/	/	/
Water supply, waste management	/	3.9	87.4	2.7	/	4.5
Construction	/	5.8	55.2	15.1	13.6	10.0
Wholesale and retail trade; repair of motor vehicles	0.4	3.1	88.1	4.0	2.7	1.7
Transportation and storage	/	1.8	84.0	3.9	5.5	4.6
Accommodation and food service activities	/	6.2	77.9	7.9	4.5	3.2
Information and communication	/	2.4	88.2	3.6	2.1	3.3
Financial and insurance activities	/	/	96.5	/	/	/
Real estate activities	-	/	71.2	/	/	/
Professional, scientific and technical activities	/	2.8	87.2	2.9	3.0	3.4
Administrative and support service activities	2.0	5.6	85.1	/	1.8	4.2
Public administration and defence; compulsory social security	/	1.1	97.2	0.7	/	/
Education	0.8	5.7	92.4	/	/	/
Human health and social work activities	/	3.1	93.5	0.9	1.6	0.7
Arts, entertainment and recreation	3.4	9.1	72.5	2.6	2.6	9.8
Other service activities	/	9.8	71.2	5.6	2.5	9.4
Activities of households as employers	/	31.8	18.8	/	/	21.8
Act of extraterritorial organizations and bodies	-	-	100.0	-	-	-

Graph. 5. Employed by reason of absence from work, 2021 (in thousands)

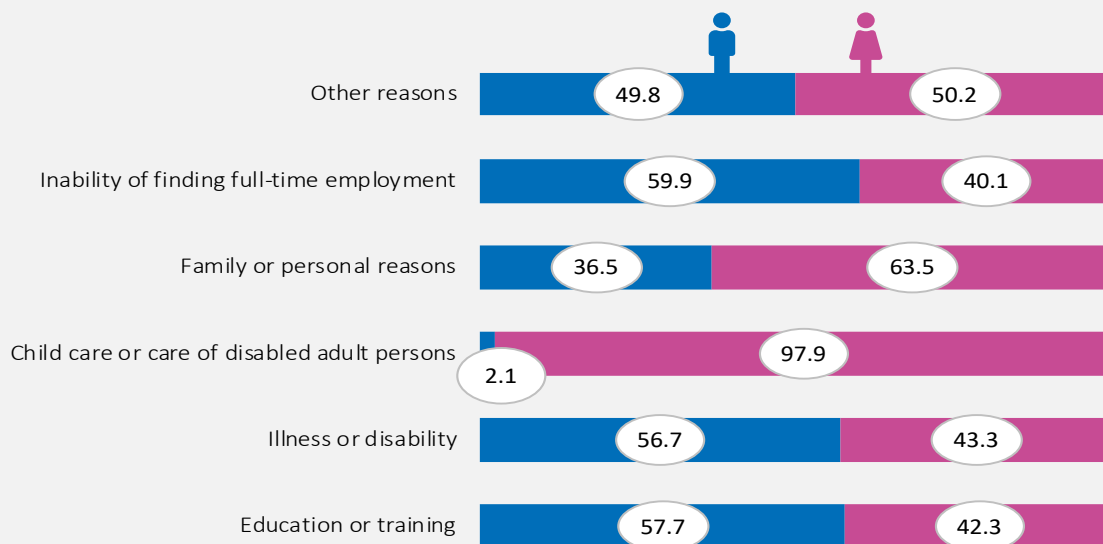


2.8. Employed by ownership and work hours, sex and region, 2021 (in thous.)

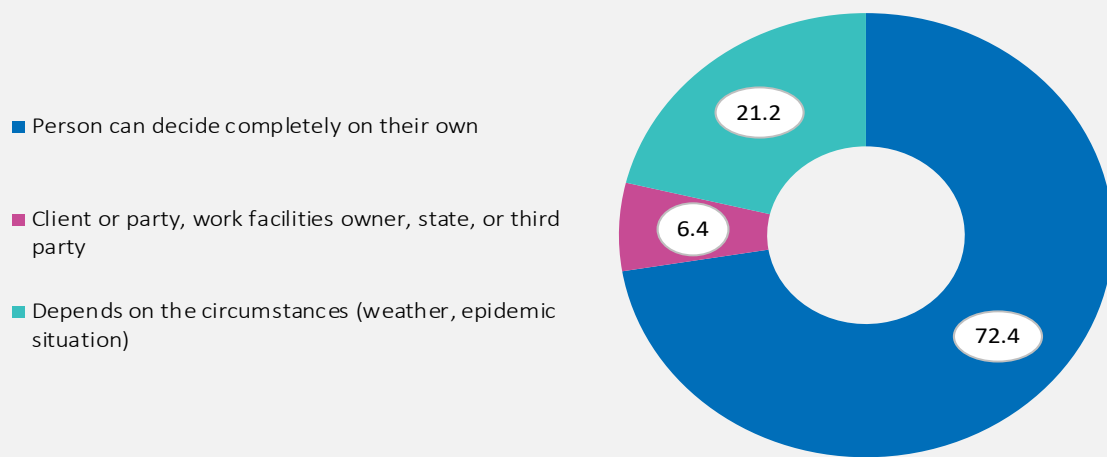
	Republic of Serbia							
	Total	Sex		Srbija – sever		Srbija – jug		
		male	female	Beo-gradski region	Region Vojvodine	Region Šumadije i Zapadne Srbije	Region Južne i Istočne Srbije	Region Kosovo i Metohija
Employed (15–89)	2848.8	1595.4	1253.4	755.2	774.5	786.4	532.7	...
Private ownership	2100.2	1230.5	869.8	519.6	603.4	589.7	387.6	...
Full-time	1902.1	1126.4	775.7	479.5	554.9	521.0	346.7	...
Part-time	198.1	104.0	94.1	40.1	48.4	68.7	40.9	...
State ownership	702.7	336.9	365.8	220.0	159.7	187.0	135.9	...
Full-time	684.6	332.4	352.2	216.2	154.6	182.0	131.9	...
Part-time	18.1	4.5	13.6	3.8	5.2	5.0	4.1	...
Other forms of ownership¹⁾	45.9	28.0	17.9	15.6	11.3	9.7	9.2	...
Full-time	33.7	21.1	12.6	10.2	8.3	8.3	6.8	...
Part-time	12.2	6.9	5.3	5.3	3.0	1.4	2.4	...
Working age population (15–64)	2730.6	1519.9	1210.7	737.4	751.4	733.6	508.2	...
Private ownership	1988.7	1158.1	830.6	504.1	582.9	538.3	363.4	...
Full-time	1837.7	1080.7	757.0	470.2	543.9	490.5	333.0	...
Part-time	151.0	77.4	73.6	33.9	39.0	47.7	30.4	...
State ownership	698.0	335.0	363.0	218.4	157.8	185.9	135.8	...
Full-time	681.5	330.8	350.7	215.1	153.2	181.4	131.8	...
Part-time	16.4	4.1	12.3	3.4	4.6	4.5	4.0	...
Other forms of ownership¹⁾	43.9	26.7	17.2	14.8	10.7	9.4	8.9	...
Full-time	32.9	20.6	12.3	10.0	8.1	8.2	6.6	...
Part-time	11.0	6.1	4.8	4.8	2.6	1.2	2.3	...

¹⁾ Other forms of ownership include joint ownership, ownership in business entitled where privatization has not been completed, and ownership in an organisation without the form of ownership.

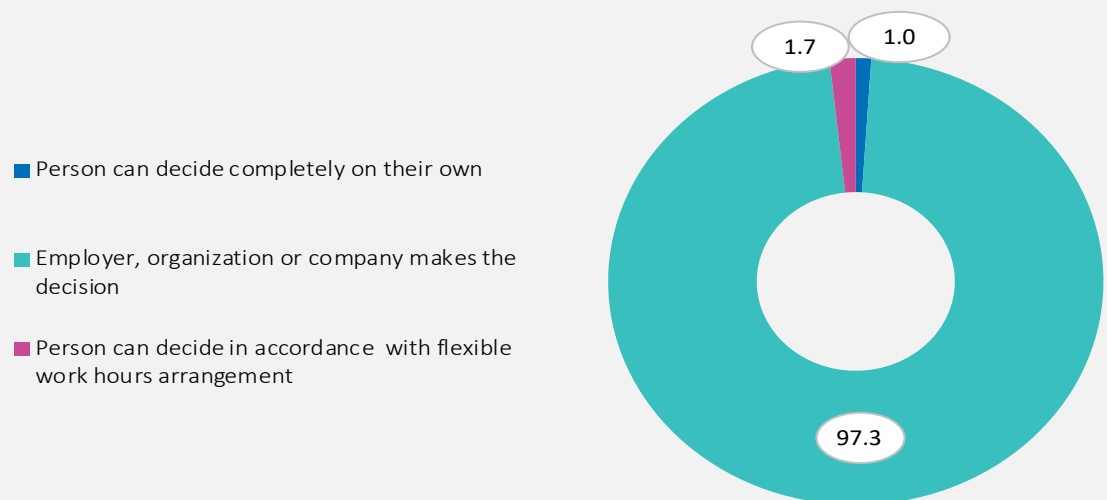
Graph. 6. Employed by reasons of of part-time employment by sex (in %), 2021



Graph. 7. Self-employed and unpaid family workers by decision-makers on their work hours, 2021 (%)



Graph. 7a. Employees by decision-makers on their work hours, 2021 (%)



2.9. Employed by sector of activity, sex and region, 2021 (in thous.)

	Republic of Serbia							
	Total	Sex		Srbija – sever		Srbija – jug		
		male	female	Beo-gradski region	Region Vojvodine	Region Šumadije i Zapadne Srbije	Region Južne i Istočne Srbije	Region Kosovo i Metohija
Employed (15–89)	2848.8	1595.4	1253.4	755.2	774.5	786.4	532.7	...
Agriculture, forestry and fishing	426.3	260.8	165.5	22.5	112.6	203.9	87.3	...
Mining and quarrying	36.1	32.2	3.9	12.8	5.4	9.1	8.8	...
Manufacturing	563.8	335.6	228.2	87.4	190.3	168.6	117.4	...
Electricity and gas supply	37.0	29.6	7.4	12.8	7.7	6.4	10.1	...
Water supply, waste management	39.1	30.9	8.2	7.6	9.8	13.5	8.2	...
Construction	171.4	157.1	14.3	43.1	44.3	45.0	38.9	...
Wholesale and retail trade; repair of motor vehicles	402.3	182.5	219.8	128.8	108.2	94.0	71.2	...
Transportation and storage	160.8	130.8	29.9	57.0	42.9	36.3	24.6	...
Accommodation and food service activities	91.2	45.5	45.8	34.7	19.0	23.3	14.3	...
Information and communication	105.2	66.4	38.8	62.9	22.9	12.5	6.8	...
Financial and insurance activities	44.6	14.6	30.1	17.1	15.4	6.7	5.4	...
Real estate activities	5.0	2.8	2.2	1.8	1.5	1.0	/	...
Professional, scientific and technical activities	101.6	51.7	50.0	53.8	24.1	14.2	9.6	...
Administrative and support service activities	58.8	34.0	24.8	27.2	14.5	8.5	8.6	...
Public administration and defence; compulsory social security	151.5	86.1	65.5	46.7	36.3	35.5	33.0	...
Education	179.7	44.7	135.0	55.3	49.4	40.9	34.0	...
Human health and social work activities	161.3	36.4	124.9	43.1	39.1	43.2	36.0	...
Arts, entertainment and recreation	51.1	28.5	22.6	18.1	12.1	11.2	9.6	...
Other service activities	52.6	23.6	28.9	19.5	14.8	10.8	7.5	...
Activities of households as employers	8.0	1.1	6.8	1.9	4.0	1.4	/	...
Act of extraterritorial organizations and bodies	1.3	/	/	1.2	-	/	-	...

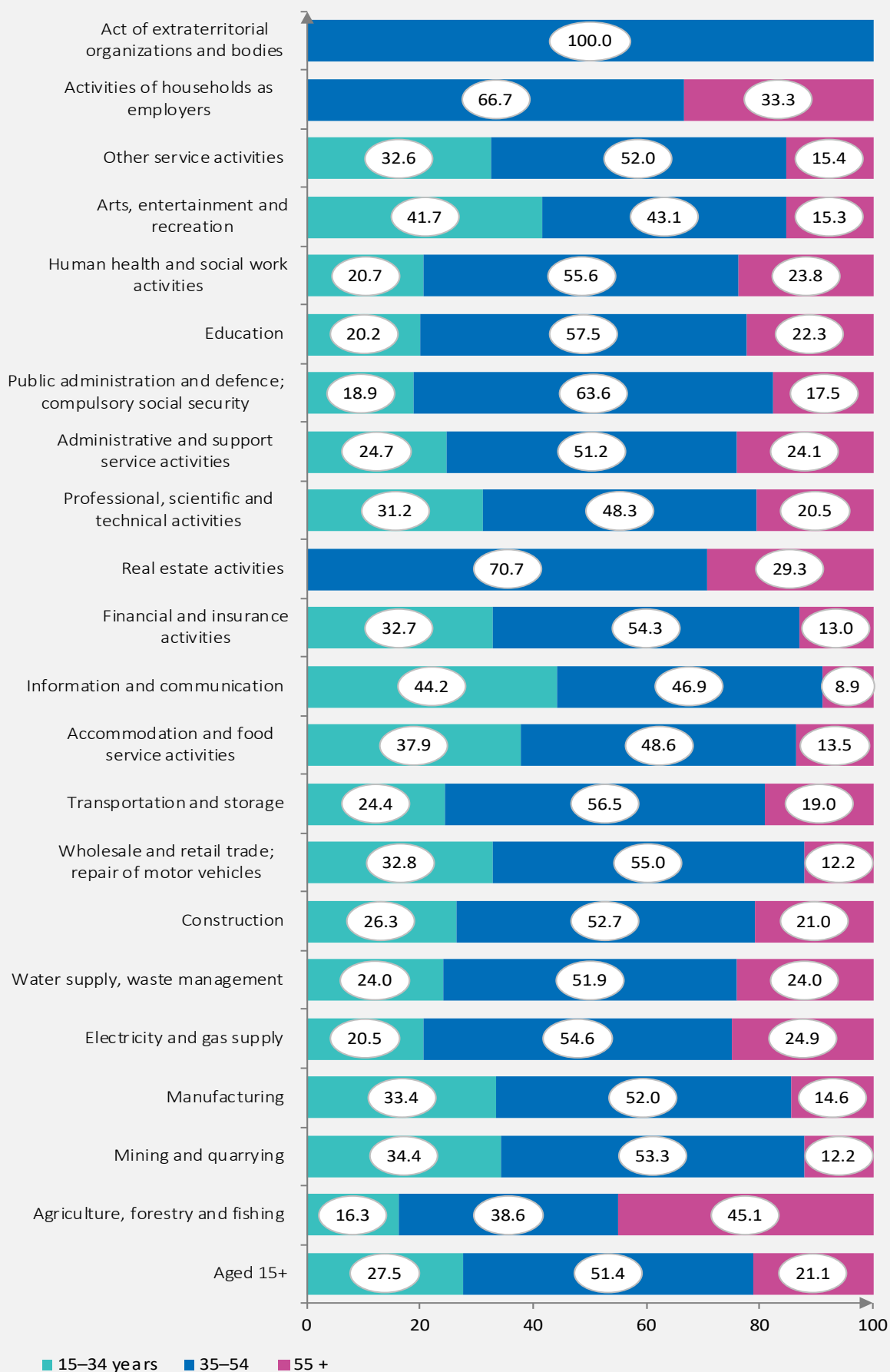
2.9. Employed by sector of activity, sex and region, 2021 (in thous.)

	Republic of Serbia							
	Total	Sex		Srbija – sever		Srbija – jug		
		male	female	Beo-gradski region	Region Vojvodine	Region Šumadije i Zapadne Srbije	Region Južne i Istočne Srbije	Region Kosovo i Metohija
Working age (15–64)	2730.6	1519.9	1210.7	737.4	751.4	733.6	508.2	...
Agriculture, forestry and fishing	342.3	207.0	135.3	17.4	101.0	157.4	66.4	...
Mining and quarrying	36.1	32.1	3.9	12.7	5.4	9.1	8.8	...
Manufacturing	558.1	331.4	226.7	86.3	188.1	167.4	116.4	...
Electricity and gas supply	36.7	29.3	7.4	12.8	7.4	6.4	10.1	...
Water supply, waste management	39.1	30.9	8.2	7.6	9.8	13.5	8.2	...
Construction	167.4	153.1	14.3	41.7	43.2	44.0	38.4	...
Wholesale and retail trade; repair of motor vehicles	397.9	179.5	218.4	127.2	106.6	93.2	70.8	...
Transportation and storage	158.5	128.6	29.9	55.9	42.4	36.0	24.2	...
Accommodation and food service activities	90.4	45.1	45.3	34.2	18.9	23.1	14.2	...
Information and communication	104.4	65.8	38.6	62.6	22.6	12.5	6.6	...
Financial and insurance activities	44.2	14.6	29.7	16.7	15.4	6.7	5.4	...
Real estate activities	4.4	2.3	2.1	1.6	1.1	1.0	/	...
Professional, scientific and technical activities	97.6	49.6	48.0	52.0	22.5	13.5	9.6	...
Administrative and support service activities	57.2	32.8	24.4	26.4	13.9	8.4	8.5	...
Public administration and defence; compulsory social security	150.0	85.6	64.3	46.1	36.0	34.9	33.0	...
Education	178.7	43.9	134.8	54.9	49.1	40.6	34.0	...
Human health and social work activities	158.3	35.9	122.4	42.1	37.9	42.6	35.7	...
Arts, entertainment and recreation	50.4	28.0	22.5	17.7	12.1	11.1	9.5	...
Other service activities	50.8	22.9	27.9	18.8	14.4	10.5	7.1	...
Activities of households as employers	7.0	1.0	6.0	1.5	3.6	1.3	/	...
Act of extraterritorial organizations and bodies	1.3	/	/	1.2	/	/	/	...

2.10. Employed by sector of activity and age group, 2021 (in thous.)

	15–34 years	35–54	55 +
Total	784.4	1464	600.4
Agriculture, forestry and fishing	69.6	164.4	192.3
Mining and quarrying	12.4	19.2	4.4
Manufacturing	188.5	293	82.2
Electricity and gas supply	7.6	20.2	9.2
Water supply, waste management	9.4	20.3	9.4
Construction	45.1	90.3	35.9
Wholesale and retail trade; repair of motor vehicles	132.1	221.1	49.0
Transportation and storage	39.3	90.9	30.6
Accommodation and food service activities	34.6	44.4	12.3
Information and communication	46.5	49.4	9.4
Financial and insurance activities	14.6	24.2	5.8
Real estate activities	/	2.9	1.2
Professional, scientific and technical activities	31.7	49.1	20.8
Administrative and support service activities	14.5	30.1	14.2
Public administration and defence; compulsory social security	28.6	96.3	26.5
Education	36.2	103.3	40.1
Human health and social work activities	33.3	89.6	38.3
Arts, entertainment and recreation	21.3	22.0	7.8
Other service activities	17.1	27.3	8.1
Activities of households as employers	/	4.8	2.4
Act of extraterritorial organizations and bodies	-	1.2	/

Graph. 8. Employed by sector of activity and age groups, (in %), 2021.



2.11. Employed by occupation, sex and region, 2021 (in thous.)

	Republic of Serbia							
	Total	Sex		Srbija – sever		Srbija – jug		
		male	female	Beo-gradski region	Region Vojvodine	Region Šumadije i Zapadne Srbije	Region Južne i Istočne Srbije	Region Kosovo i Metohija
Employed (15–89)	2848.8	1595.4	1253.4	755.2	774.5	786.4	532.7	...
Managers (directors), officials and legislators	99.8	66.9	32.9	37.0	29.6	19.2	14.0	...
Professional and art experts	434.8	188.2	246.5	188.6	109.1	81.3	55.8	...
Technicians and associate professionals	318.8	150.6	168.2	103.7	84.4	74.1	56.5	...
Administrative workers	255.2	101.5	153.7	108.9	60.2	48.3	37.8	...
Service and trade occupations	427.8	178.7	249.1	117.6	118.0	108.7	83.5	...
Farmers, foresters, fisherman and related	365.6	221.3	144.3	19.9	75.8	191.3	78.6	...
Craft workers and related	354.7	294.0	60.7	68.5	98.4	110.4	77.4	...
Machine and plant operators, assemblers and drivers	318.2	241.0	77.2	49.3	115.1	81.9	71.8	...
Simple occupations	255.5	136.6	118.9	57.6	80.0	66.1	51.7	...
Military occupations	18.5	16.6	1.9	3.9	3.8	5.2	5.7	...
Working age (15–64)	2730.6	1519.9	1210.7	737.4	751.4	733.6	508.2	...
Managers (directors), officials and legislators	97.2	64.7	32.5	36.3	28.6	18.6	13.7	...
Professional and art experts	427.0	184.1	242.9	185.2	105.8	80.7	55.3	...
Technicians and associate professionals	315.7	148.9	166.8	102.7	83.4	73.4	56.2	...
Administrative workers	252.5	100.4	152.2	107.7	59.6	47.5	37.6	...
Service and trade occupations	420.0	173.7	246.4	114.7	115.5	107.2	82.6	...
Farmers, foresters, fisherman and related	283.5	168.4	115.1	14.9	64.9	145.4	58.3	...
Craft workers and related	350.2	290.2	59.9	67.3	96.8	109.7	76.3	...
Machine and plant operators, assemblers and drivers	315.0	238.0	77.1	48.2	114.6	80.9	71.4	...
Simple occupations	250.9	134.9	115.9	56.5	78.3	65.0	51.1	...
Military occupations	18.5	16.6	1.9	3.9	3.8	5.2	5.7	...

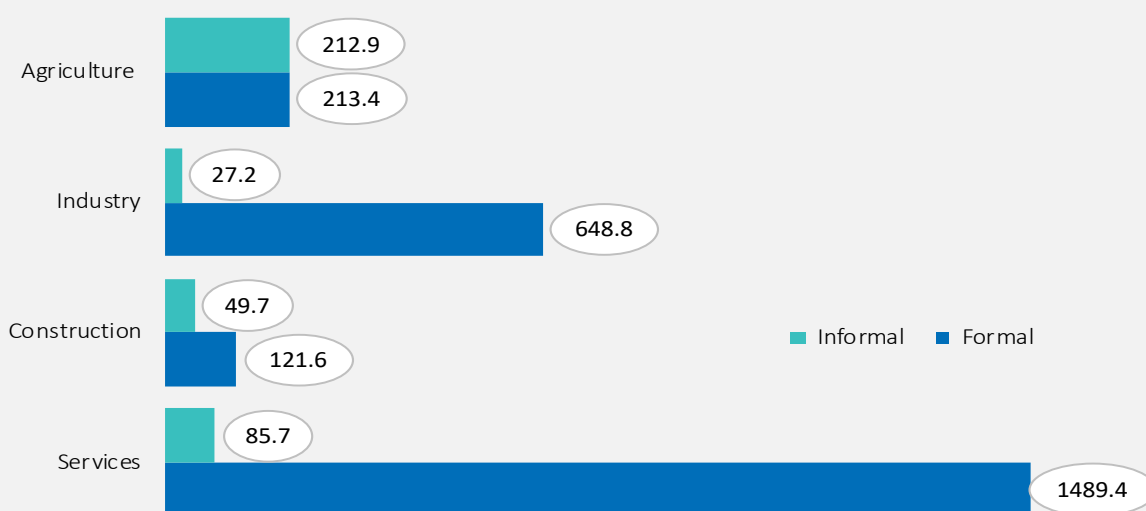
2.12. Employed by sector of activity and major occupation groups, 2021 (in thous.)

	Managers (directors), officials and legislators	Professional and art experts	Technicians and associate professionals	Administrative workers	Service and trade occupations	Craft workers and related	Machine and plant operators, assemblers and drivers	Simple occupations
Total	99.8	434.8	318.8	255.2	427.8	354.7	318.2	255.5
Agriculture, forestry and fishing	1.8	3.7	2.2	3.0	1.4	2.5	10.1	39.1
Mining and quarrying	/	2.6	4.8	2.7	1.6	6.9	12.8	3.7
Manufacturing	19.5	34.9	48.8	35.6	19.3	182.3	161.0	61.9
Electricity and gas supply	/	4.4	5.4	6.7	2.1	9.7	5.0	2.6
Water supply, waste management	1.5	2.5	4.7	4.8	1.9	5.9	4.8	13.0
Construction	7.5	9.3	15.8	6.6	3.5	77.7	15.9	35.0
Wholesale and retail trade; repair of motor vehicles	14.1	22.6	39.7	41.5	223.2	31.9	15.4	13.5
Transportation and storage	7.4	7.1	10.3	35.7	8.0	7.8	76.3	8.0
Accommodation and food service activities	8.7	3.6	1.9	5.4	53.6	3.9	1.2	12.9
Information and communication	6.7	58.3	19.9	10.4	1.7	4.3	1.6	2.3
Financial and insurance activities	2.5	8.2	10.2	20.8	2.3	/	-	/
Real estate activities	/	/	1.8	/	1.1	-	/	/
Professional, scientific and technical activities	8.4	52.7	22.8	12.6	/	2.9	/	/
Administrative and support service activities	2.6	5.4	5.8	9.9	12.4	3.0	2.2	16.2
Public administration and defence; compulsory social security	7.4	27.7	30.2	27.4	29.6	2.9	3.0	4.6
Education	3.9	123.2	6.1	5.7	17.8	/	/	21.4
Human health and social work activities	1.6	48.2	72.4	7.2	14.7	1.6	5.3	10.2
Arts, entertainment and recreation	1.8	12.6	13.1	15.7	4.6	/	/	2.3
Other service activities	2.3	6.5	3.0	2.6	22.6	10.1	1.7	3.8
Activities of households as employers	-	/	-	-	4.9	-	-	3.0

2.13. Employed by formality in employment, age groups, professional status, sex and region, 2021 (in thous.)

	Republic of Serbia							
	Total	Sex		Srbija – sever		Srbija – jug		
		male	female	Beo-gradski region	Region Vojvodine	Region Šumadije i Zapadne Srbije	Region Južne i Istočne Srbije	Region Kosovo i Metohija
Employed (15–89)	2848.8	1595.4	1253.4	755.2	774.5	786.4	532.7	...
Formally employed, 15–89 (in thous.)	2473.3	1396.0	1077.3	697.2	683.4	641.4	451.3	...
15–24	125.9	78.1	47.7	30.1	42.6	33.4	19.7	...
25–54	1866.4	1013.3	853.2	550.2	515.5	456.8	343.9	...
55–64	410.6	247.5	163.1	105.0	109.7	120.9	74.9	...
65+	70.4	57.0	13.3	11.8	15.5	30.3	12.7	...
By professional status (in thous.)								
Self-employed with employees	96.5	69.8	26.7	28.0	24.4	27.0	17.1	...
Self-employed w/o employees	288.9	225.5	63.4	49.3	74.8	111.8	52.9	...
Employees	2087.9	1100.7	987.2	619.9	584.1	502.6	381.3	...
Unpaid family workers	-	-	-	-	-	-	-	...
Informally employed, 15–89 (in thous.)	375.5	199.4	176.1	58.0	91.1	145.0	81.4	...
15–24	44.4	31.7	12.7	7.8	12.1	16.6	7.9	...
25–54	211.7	120.0	91.7	34.8	55.0	74.7	47.1	...
55–64	71.6	29.2	42.3	9.3	16.4	31.2	14.6	...
65 +	47.9	18.5	29.4	6.0	7.6	22.5	11.8	...
By professional status (in thous.)								
Self-employed with employees	1.3	1.3	/	/	/	/	/	...
Self-employed w/o employees	97.8	77.0	20.8	21.1	24.0	25.5	27.1	...
Employees	104.5	68.7	35.8	25.7	39.6	20.1	19.0	...
Unpaid family workers	172.0	52.4	119.6	11.1	26.9	99.0	35.0	...
Informal employment rate (%)	13.2	12.5	14.1	7.7	11.8	18.4	15.3	...

Graph. 9. Formal/informal employed by sector of activity, 2021 (in thous.)



Note

The **agriculture sector** includes Agriculture, forestry and fishing.

The **industry sector** includes Ore mining, Processing industry, Power, gas and vapor supply and Water supply and waste water management.

The **construction sector** includes only Construction.

The **services sector** includes Wholesale and retail, Traffic and storage, Accommodation and catering services, Information and communication, Financial and insurance activities, Real estate business, Expert, scientific, innovative and technical activities, Administrative and supporting service activities, State administration and compulsory social insurance, Education, Health and social care, Art, entertainment and recreation, Other service activities, Household activity as an employer, Activity of extraterritorial organizations and bodies.

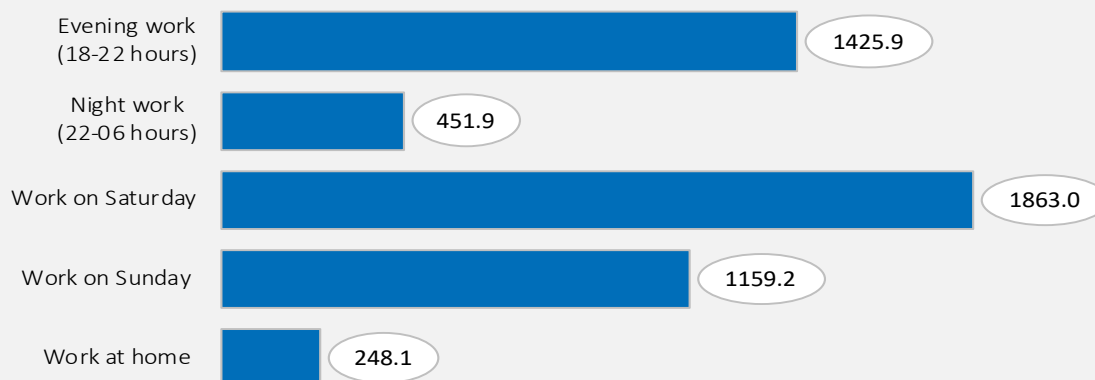
2.14. Share of employed working from home, at weekends, in the evening or at night by major occupation groups, 2021 (%)

	Work from home	Saturdays	Sundays	In the evening	At night
	100.0	100.0	100.0	100.0	100.0
Managers (directors), officials and legislators	8.5	3.1	2.8	2.9	2.0
Professional and art experts	49.3	6.8	6.2	9.6	8.3
Technicians and associate professionals	11.5	9.1	8.8	9.7	13.9
Administrative workers	8.2	5.7	4.3	5.5	5.8
Service and trade occupations	4.8	19.4	22.0	21.6	19.8
Farmers, foresters, fisherman and related	11.4	18.8	28.5	17.6	5.0
Craft workers and related	2.8	14.1	7.7	10.2	9.4
Machine and plant operators, assemblers and drivers	2.1	13.0	10.6	14.3	26.8
Simple occupations	1.4	9.4	8.1	7.7	6.9
Military occupations	/	0.6	0.9	0.8	2.2

2.15. Share of employed working from home, at weekends, in the evening or at night by sector of activity, 2021 (%)

	Work from home	Saturdays	Sundays	In the evening	At night
	100.0	100.0	100.0	100.0	100.0
Agriculture, forestry and fishing	12.7	21.3	31.4	19.1	6.0
Mining and quarrying	0.7	1.3	1.7	1.5	3.7
Manufacturing	9.3	19.7	10.4	19.0	28.5
Electricity and gas supply	0.5	0.9	1.2	1.0	2.2
Water supply, waste management	0.5	1.1	1.2	1.0	1.5
Construction	2.1	7.1	4.1	3.8	2.0
Wholesale and retail trade; repair of motor vehicles	7.3	16.5	14.2	15.9	5.1
Transportation and storage	2.8	6.1	6.7	7.1	13.5
Accommodation and food service activities	0.9	4.3	5.7	4.8	4.4
Information and communication	19.1	2.5	2.5	2.9	3.7
Financial and insurance activities	3.4	0.8	0.4	0.7	0.3
Real estate activities	0.5	0.2	0.2	0.2	/
Professional, scientific and technical activities	11.1	2.2	1.5	2.1	1.1
Administrative and support service activities	2.1	1.7	1.8	1.6	2.5
Public administration and defence; compulsory social security	2.5	3.2	4.4	3.9	9.2
Education	19.1	1.3	0.8	3.9	0.8
Human health and social work activities	2.0	5.4	6.8	6.9	11.8
Arts, entertainment and recreation	1.3	2.2	3.1	2.7	2.9
Other service activities	2.1	2.0	1.5	1.8	0.4
Activities of households as employers	/	0.2	0.3	0.2	0.3

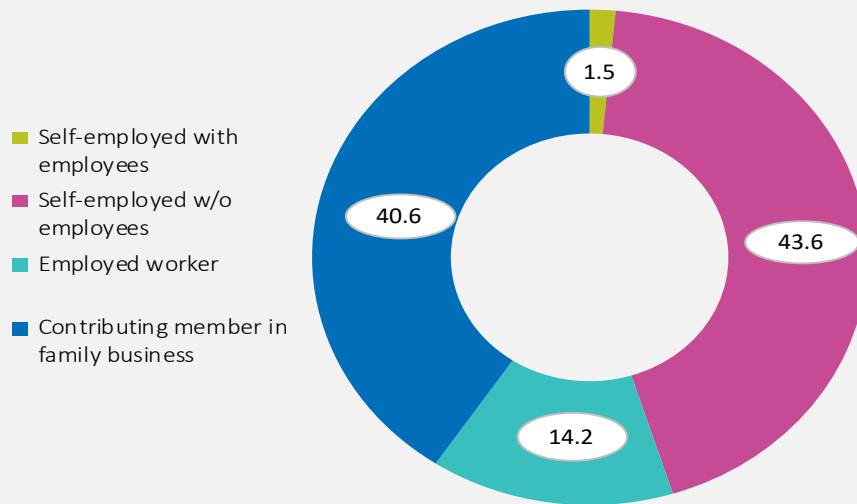
Graph. 10. Employed persons by specific types of work hours, 2021 (in thous.)



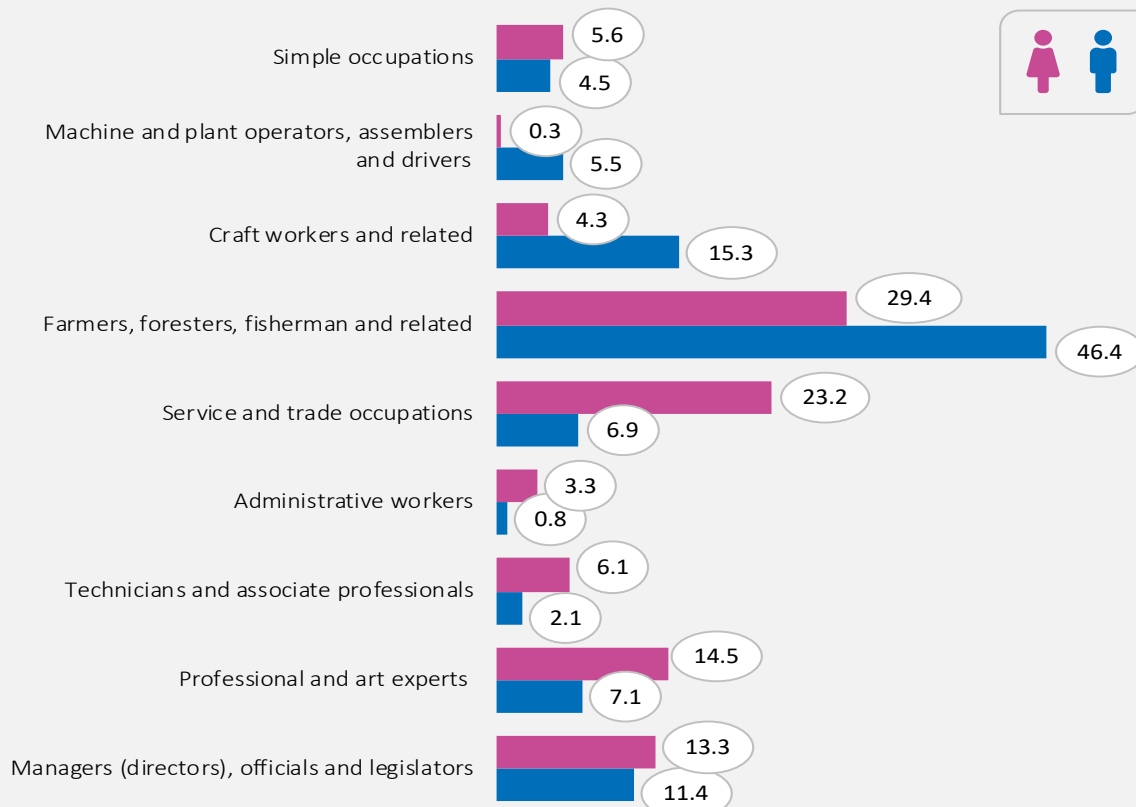
2.16. Employed by search of another job, sex and region, 2021 (in thous.)

	Republic of Serbia							
	Total	Sex		Srbija – sever		Srbija – jug		
		male	female	Beo-gradski region	Region Vojvo-dine	Region Šuma-dije i Zapadne Srbije	Region Južne i Istočne Srbije	Region Kosovo i Metohija
Employed (15–89)	2848.8	1595.4	1253.4	755.2	774.5	786.4	532.7	...
Employed not in search of another job in the previous four weeks	2672.5	1484.3	1188.2	706.6	730.4	739.6	495.9	...
Employed in search of another job in the previous four weeks	176.3	111.1	65.2	48.6	44.0	46.9	36.8	...

Graph.11. Professional status in additional job, 2021 (in %)



Graph. 12. Self-employed by occupation and sex (in %), 2021



2.17. Employees by type of contract and employment rights, sex, region and type of settlement, 2021 (in thous.)

	Republic of Serbia							
	Total	Srbija – sever		Srbija – jug			Type of settlement	
		Beo-gradski region	Region Vojvodine	Region Šumadije i Zapadne Srbije	Region Južne i Istočne Srbije	Region Kosovo i Metohija	Urban	Other
Employees (15–89)	2192.4	645.6	623.7	522.7	400.3	...	1418.6	773.8
Employees by contract								
Based on written employment agreement	2087.9	619.9	584.1	502.6	381.3	...	1361.4	726.5
Based on oral employment agreement	104.5	25.7	39.6	20.1	19.0	...	57.2	47.3
Employment rights								
Right to pension insurance	2079.4	617.6	582.5	500.1	379.1	...	1355.7	723.7
No right to pension insurance	113.0	28.0	41.2	22.6	21.2	...	62.9	50.1
Right to health insurance	2079.1	616.5	581.1	501.5	380.1	...	1354.7	724.4
No right to health insurance	113.3	29.2	42.7	21.2	20.2	...	63.9	49.3
Right to paid sick leave	2043.2	605.6	570.8	493.0	373.8	...	1331.4	711.7
No right to paid sick leave	149.2	40.0	53.0	29.7	26.5	...	87.2	62.1
Right to paid annual vacation	2038.1	605.0	570.1	491.3	371.7	...	1327.3	710.8
No right to paid annual vacation	154.3	40.6	53.6	31.3	28.7	...	91.3	63.0
Male	1169.4	324.4	337.4	287.8	219.8	...	717.0	452.4
Employees by contract								
Based on written employment agreement	1100.7	308.6	313.1	273.6	205.5	...	681.4	419.4
Based on oral employment agreement	68.7	15.8	24.3	14.2	14.4	...	35.7	33.1
Employment rights								
Right to pension insurance	1095.7	306.9	312.0	272.3	204.6	...	678.2	417.5
No right to pension insurance	73.7	17.5	25.4	15.5	15.3	...	38.8	34.9
Right to health insurance	1095.9	307.0	311.5	272.8	204.7	...	677.6	418.3
No right to health insurance	73.5	17.4	25.9	15.0	15.2	...	39.4	34.1
Right to paid sick leave	1078.1	300.9	307.1	268.7	201.3	...	666.5	411.6
No right to paid sick leave	91.4	23.5	30.3	19.0	18.5	...	50.6	40.8
Right to paid annual vacation	1074.9	300.7	306.6	268.0	199.6	...	663.7	411.2
No right to paid annual vacation	94.5	23.7	30.8	19.8	20.2	...	53.4	41.2

2.17. Employees by type of contract and employment rights, sex, region and type of settlement, 2021 (in thous.)

	Republic of Serbia							
	Total	Srbija – sever		Srbija – jug			Type of settlement	
		Beo-gradski region	Region Vojvodine	Region Šumadije i Zapadne Srbije	Region Južne i Istočne Srbije	Region Kosovo i Metohija	Urban	Other
Female	1022.9	321.2	286.3	234.9	180.5	...	701.6	321.3
Employees by contract								
Based on written employment agreement	987.2	311.3	271.0	229.0	175.8	...	680.0	307.1
Based on oral employment agreement	35.8	9.9	15.3	5.9	4.7	...	21.6	14.2
Employment rights								
Right to pension insurance	983.6	310.7	270.5	227.9	174.5	...	677.5	306.2
No right to pension insurance	39.3	10.5	15.8	7.0	6.0	...	24.1	15.2
Right to health insurance	983.2	309.5	269.6	228.7	175.4	...	677.1	306.1
No right to health insurance	39.7	11.7	16.7	6.2	5.1	...	24.5	15.2
Right to paid sick leave	965.1	304.7	263.7	224.3	172.5	...	665.0	300.1
No right to paid sick leave	57.8	16.5	22.6	10.6	8.0	...	36.6	21.2
Right to paid annual vacation	963.2	304.3	263.5	223.4	172.0	...	663.7	299.5
No right to paid annual vacation	59.7	16.9	22.8	11.5	8.5	...	37.9	21.8

2.18. Employees by sector of activity, sex, region and type of settlement, 2021 (in thous.)

	Republic of Serbia							
	Total	Srbija – sever		Srbija – jug			Type of settlement	
		Beo-gradski region	Region Vojvodine	Region Šumadije i Zapadne Srbije	Region Južne i Istočne Srbije	Region Kosovo i Metohija	Urban	Other
Employees (15–89)	2192.4	645.6	623.7	522.7	400.3	...	1418.6	773.8
Agriculture	55.9	3.2	35.2	9.6	7.8	...	18.6	37.3
Industry	627.6	108.4	199.0	185.4	134.8	...	342.5	285.1
Construction	127.5	31.7	33.1	34.1	28.5	...	66.4	61.1
Services	1381.5	502.3	356.5	293.6	229.2	...	991.2	390.3
Male	1169.4	324.4	337.4	287.8	219.8	...	717.0	452.4
Agriculture	38.3	1.8	25.2	5.6	5.6	...	12.3	25.9
Industry	392.0	72.6	118.4	118.4	82.5	...	207.6	184.3
Construction	114.1	25.2	30.3	32.9	25.7	...	55.9	58.2
Services	625.1	224.9	163.5	130.8	106.0	...	441.2	183.9
Female	1022.9	321.2	286.3	234.9	180.5	...	701.6	321.3
Agriculture	17.6	1.5	10.0	3.9	2.2	...	6.2	11.4
Industry	235.6	35.8	80.6	67.0	52.3	...	134.9	100.7
Construction	13.3	6.6	2.7	1.3	2.8	...	10.5	2.8
Services	756.4	277.4	193.0	162.7	123.2	...	550.0	206.4



Note

The **agriculture sector** includes Agriculture, forestry and fishing.

The **industry sector** includes Ore mining, Processing industry, Power, gas and vapor supply and Water supply and waste water management.

The **construction sector** includes only Construction.

The **services sector** includes Wholesale and retail, Traffic and storage, Accommodation and catering services, Information and communication, Financial and insurance activities, Real estate business, Expert, scientific, innovative and technical activities, Administrative and supporting service activities, State administration and compulsory social insurance, Education, Health and social care, Art, entertainment and recreation, Other service activities, Household activity as an employer, Activity of extraterritorial organizations and bodies.

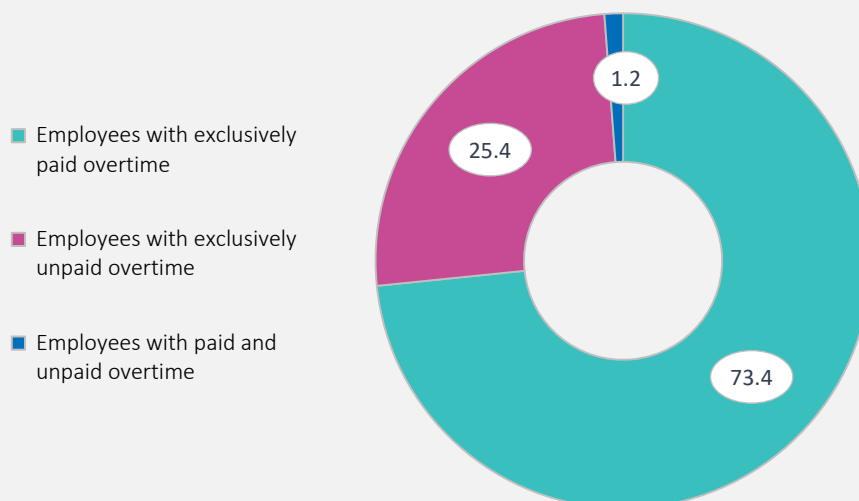
Graph. 13. Employees obliged to supervise the work of other workers, by sex (in %), 2021



Note

Referring to an employees who supervise and manage work of at least of one worker (except interns), and whose function is included in their job description.

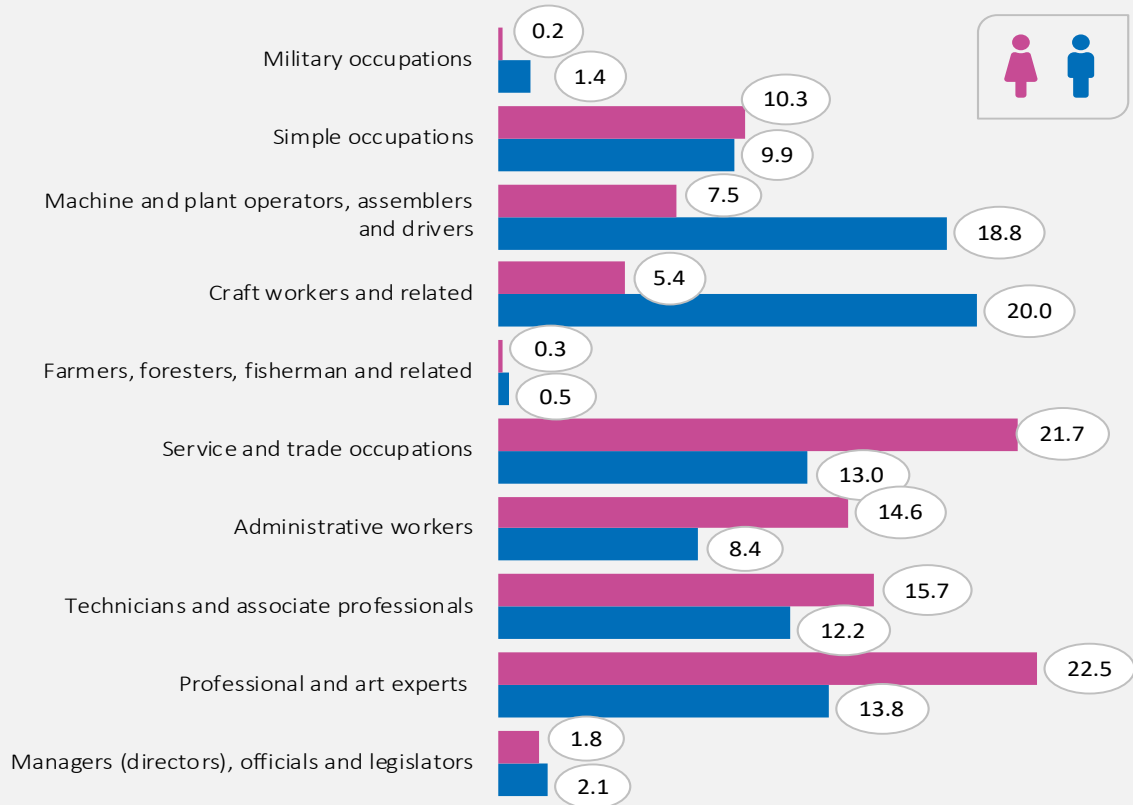
Graph. 14. Structure of employees by paid and unpaid overtime work hours, 2021 (in %)



2.19. Employees by occupation, sex, region and type of settlement, 2021 (in thous.)

	Republic of Serbia							
	Total	Srbija – sever		Srbija – jug			Type of settlement	
		Beo-gradski region	Region Vojvodine	Region Šumadije i Zapadne Srbije	Region Južne i Istočne Srbije	Region Kosovo i Metohija	Urban	Other
Employees (15–89)	2192.4	645.6	623.7	522.7	400.3	...	1418.6	773.8
Managers (directors), officials and legislators	42.3	10.8	14.4	7.0	10.1	...	33.5	8.8
Professional and art experts	392.0	169.6	97.2	74.1	51.1	...	330.3	61.8
Technicians and associate professionals	303.7	99.0	78.9	71.5	54.4	...	227.6	76.1
Administrative workers	247.8	106.4	58.6	46.6	36.3	...	186.2	61.6
Service and trade occupations	373.9	106.2	106.7	91.2	69.8	...	228.7	145.2
Farmers, foresters, fisherman and related	8.1	1.6	2.9	2.1	1.5	...	3.2	4.9
Craft workers and related	288.7	56.0	81.8	91.7	59.2	...	145.2	143.5
Machine and plant operators, assemblers and drivers	296.3	42.6	110.3	76.0	67.4	...	142.5	153.8
Simple occupations	221.0	49.6	69.1	57.3	45.0	...	107.9	113.1
Military occupations	18.5	3.9	3.8	5.2	5.7	...	13.7	4.9
Male	1169.4	324.4	337.4	287.8	219.8	...	717.0	452.4
Managers (directors), officials and legislators	24.1	5.9	7.9	4.1	6.2	...	19.7	4.4
Professional and art experts	161.6	72.8	35.0	33.2	20.5	...	141.1	20.5
Technicians and associate professionals	142.8	49.7	36.5	32.9	23.6	...	105.5	37.2
Administrative workers	98.3	38.1	26.6	18.7	14.9	...	66.9	31.4
Service and trade occupations	151.7	42.0	41.7	36.9	31.2	...	94.0	57.8
Farmers, foresters, fisherman and related	5.5	/	2.0	1.2	1.5	...	2.5	3.0
Craft workers and related	234.0	51.0	68.9	69.6	44.4	...	117.4	116.5
Machine and plant operators, assemblers and drivers	219.5	38.5	76.2	58.1	46.7	...	106.1	113.3
Simple occupations	115.4	22.3	39.0	28.6	25.5	...	51.6	63.7
Military occupations	16.6	3.2	3.6	4.5	5.3	...	12.1	4.5
Female	1022.9	321.2	286.3	234.9	180.5	...	701.6	321.3
Managers (directors), officials and legislators	18.2	4.9	6.5	2.9	3.9	...	13.7	4.5
Professional and art experts	230.4	96.8	62.1	40.9	30.6	...	189.2	41.2
Technicians and associate professionals	160.9	49.3	42.4	38.6	30.7	...	122.0	38.9
Administrative workers	149.5	68.3	32.0	27.9	21.3	...	119.3	30.3
Service and trade occupations	222.1	64.2	65.0	54.3	38.6	...	134.7	87.4
Farmers, foresters, fisherman and related	2.7	/	/	/	/	...	/	1.9
Craft workers and related	54.8	5.0	12.9	22.0	14.8	...	27.8	27.0
Machine and plant operators, assemblers and drivers	76.8	4.1	34.2	17.9	20.7	...	36.3	40.5
Simple occupations	105.6	27.3	30.2	28.6	19.5	...	56.2	49.3
Military occupations	1.9	/	/	/	/	...	1.5	/

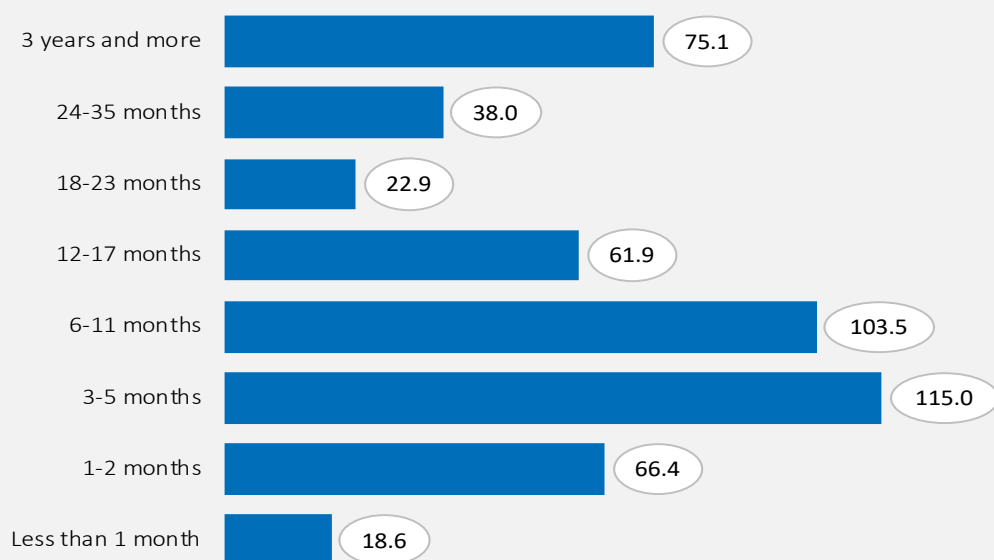
Graph. 15. Structure of employees by occupation and sex (in %), 2021



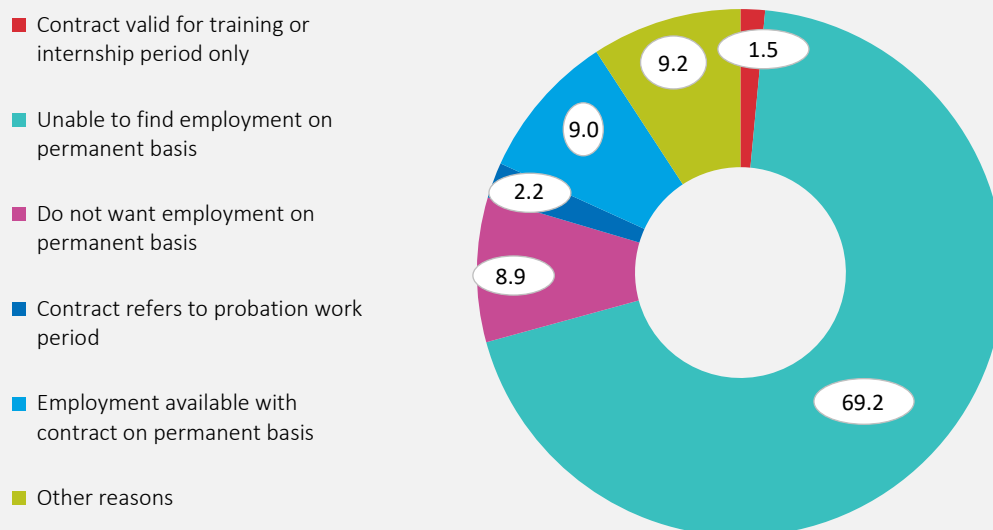
2.20. Employees by permanency of employment, sex, region and type of settlement, 2021 (in thous.)

	Republic of Serbia							
	Total	Srbija – sever		Srbija – jug			Type of settlement	
		Beogradski region	Region Vojvodine	Region Šumadije i Zapadne Srbije	Region Južne i Istočne Srbije	Region Kosovo i Metohija	Urban	Other
Employees (15–89)	2192.4	645.6	623.7	522.7	400.3	...	1418.6	773.8
Permanent	1690.9	522.7	462.7	400.4	305.1	...	1121.4	569.5
Temporary	421.7	110.0	130.2	103.2	78.3	...	258.5	163.2
Seasonal	33.7	2.8	14.7	9.0	7.2	...	11.6	22.1
Occasional	46.1	10.1	16.1	10.1	9.8	...	27.2	18.9
Working age (15–64)	2171.8	637.6	616.4	519.4	398.4	...	1403.9	767.9
Permanent	1681.9	519.2	459.1	399.5	304.1	...	1114.8	567.1
Temporary	414.3	107.0	128.0	101.3	78.0	...	253.0	161.3
Seasonal	32.7	2.8	14.4	8.8	6.8	...	11.4	21.3
Occasional	42.9	8.7	14.8	9.9	9.5	...	24.8	18.1
Male								
Employees (15–89)	1169.4	324.4	337.4	287.8	219.8	...	717.0	452.4
Permanent	900.4	261.1	251.3	221.6	166.3	...	563.2	337.2
Temporary	214.4	54.3	66.9	52.0	41.2	...	128.5	85.9
Seasonal	24.1	2.5	9.7	6.6	5.4	...	8.8	15.3
Occasional	30.6	6.6	9.5	7.6	6.8	...	16.6	14.0
Working age (15–64)	1156.9	319.3	332.7	286.1	218.8	...	708.3	448.6
Permanent	894.7	258.8	249.1	221.1	165.7	...	558.9	335.8
Temporary	209.6	52.3	65.3	51.0	41.0	...	125.3	84.3
Seasonal	23.7	2.4	9.4	6.5	5.4	...	8.7	15.0
Occasional	28.9	5.8	8.9	7.5	6.7	...	15.4	13.5
Female								
Employees (15–89)	1022.9	321.2	286.3	234.9	180.5	...	701.6	321.3
Permanent	790.5	261.6	211.3	178.8	138.8	...	558.2	232.3
Temporary	207.4	55.8	63.4	51.2	37.0	...	130.0	77.4
Seasonal	9.6	/	5.1	2.4	1.7	...	2.8	6.8
Occasional	15.5	3.5	6.6	2.5	3.0	...	10.6	4.9
Working age (15–64)	1014.9	318.3	283.7	233.4	179.6	...	695.7	319.2
Permanent	787.1	260.3	210.1	178.4	138.3	...	555.8	231.3
Temporary	204.7	54.8	62.7	50.2	37.0	...	127.8	77.0
Seasonal	9.0	/	4.9	2.3	1.4	...	2.7	6.3
Occasional	14.0	2.8	5.9	2.5	2.8	...	9.4	4.7

Graph 16. Employees by duration of temporary work (permanent, seasonal or occasional) in thousands, 2021



Graph 17. Employees by reason of temporary, seasonal or occasional employment, 2021 (in %)

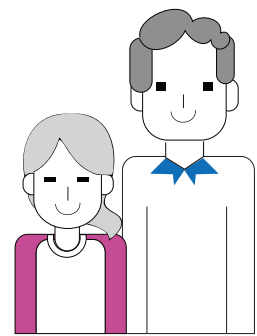


2.21. Employees by kind of ownership, sex, region and type of settlement, 2021 (in thous.)

	Republic of Serbia							
	Total	Srbija – sever		Srbija – jug			Type of settlement	
		Beo-gradski region	Region Vojvodine	Region Šumadije i Zapadne Srbije	Region Južne i Istočne Srbije	Region Kosovo i Metohija	Urban	Other
Employees (15–89)	2192.4	645.6	623.7	522.7	400.3	...	1418.6	773.8
Private ownership	1460.9	414.8	456.6	329.3	260.2	...	908.5	552.4
State ownership	702.7	220.0	159.7	187.0	135.9	...	491.5	211.2
Other ¹⁾	28.8	10.8	7.3	6.4	4.2	...	18.6	10.2
Working age (15–64)	2171.8	637.6	616.4	519.4	398.4	...	1403.9	767.9
Private ownership	1445.7	408.7	451.4	327.1	258.5	...	898.6	547.1
State ownership	698.0	218.4	157.8	185.9	135.8	...	487.3	210.6
Other ¹⁾	28.1	10.5	7.2	6.4	4.0	...	18.0	10.2
Male								
Employees (15–89)	1169.4	324.4	337.4	287.8	219.8	...	717.0	452.4
Private ownership	817.0	217.3	261.8	188.3	149.5	...	488.8	328.1
State ownership	336.9	101.8	71.1	96.4	67.7	...	218.7	118.3
Other ¹⁾	15.6	5.3	4.5	3.0	2.6	...	9.5	6.1
Working age (15–64)	1156.9	319.3	332.7	286.1	218.8	...	708.3	448.6
Private ownership	806.7	213.0	258.3	186.8	148.6	...	482.2	324.5
State ownership	335.0	101.1	70.0	96.2	67.6	...	216.9	118.1
Other ¹⁾	15.2	5.2	4.4	3.0	2.6	...	9.2	6.0
Female								
Employees (15–89)	1022.9	321.2	286.3	234.9	180.5	...	701.6	321.3
Private ownership	644.0	197.5	194.8	140.9	110.7	...	419.7	224.3
State ownership	365.8	118.3	88.7	90.6	68.3	...	272.9	92.9
Other ¹⁾	13.2	5.5	2.8	3.4	1.5	...	9.0	4.2
Working age (15–64)	1014.9	318.3	283.7	233.4	179.6	...	695.7	319.2
Private ownership	639.0	195.7	193.1	140.3	109.9	...	416.4	222.6
State ownership	363.0	117.3	87.8	89.7	68.2	...	270.5	92.5
Other ¹⁾	12.9	5.3	2.8	3.4	1.5	...	8.7	4.2

¹⁾ Other forms of ownership include cooperative ownership, ownership in companies in which privatization has not been completed, as well as ownership in organizations without forms of ownership.

3



Unemployed

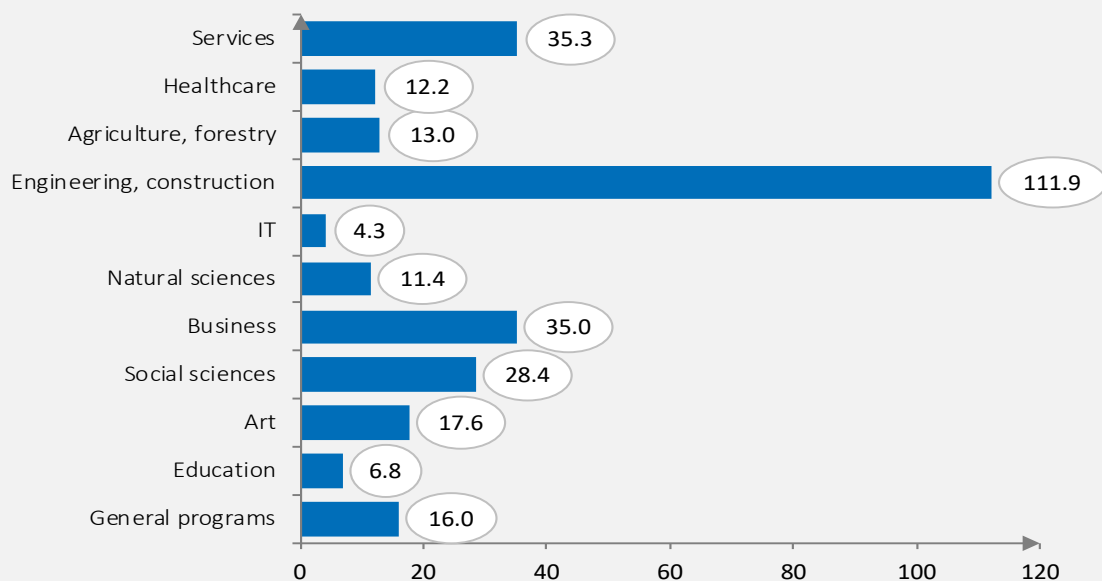
3.1. Unemployed by age groups, sex, region and type of settlement, 2021. (in thous.)

	Republic of Serbia							
	Total	Srbija – sever		Srbija – jug			Type of settlement	
		Beo-gradski region	Region Vojvodine	Region Šumadije i Zapadne Srbije	Region Južne i Istočne Srbije	Region Kosovo i Metohija	Urban	Other
Unemployed (15–74)	352.4	73.2	81.5	113.6	84.1	...	214.2	138.2
15–24 years	61.2	11.2	16.5	20.3	13.2	...	32.6	28.6
25–34	94.6	19.4	18.9	34.0	22.3	...	58.9	35.7
35–44	90.7	20.7	22.7	25.4	21.9	...	55.9	34.8
45–54	69.1	14.4	13.3	23.1	18.3	...	44.5	24.6
55–64	35.6	7.2	9.8	10.5	8.1	...	21.7	13.9
65 +	1.3	/	/	/	/	...	/	/
Male (15–74)	180.4	34.0	45.2	57.8	43.4	...	109.0	71.4
15–24 years	35.8	5.8	9.9	12.1	8.0	...	18.6	17.2
25–34	47.6	9.4	10.5	16.5	11.2	...	30.4	17.2
35–44	43.6	8.3	11.8	12.8	10.7	...	27.4	16.3
45–54	32.2	5.7	7.6	10.7	8.3	...	20.2	12.0
55–64	20.1	4.5	5.2	5.4	5.0	...	11.9	8.2
65 +	1.0	/	/	/	/	...	/	/
Female (15–74)	172.0	39.2	36.3	55.8	40.7	...	105.2	66.8
15–24 years	25.3	5.4	6.6	8.2	5.2	...	14.0	11.4
25–34	47.0	10.0	8.4	17.5	11.1	...	28.5	18.5
35–44	47.0	12.3	10.9	12.6	11.2	...	28.5	18.5
45–54	36.9	8.7	5.7	12.5	10.0	...	24.3	12.6
55–64	15.5	2.8	4.6	5.0	3.1	...	9.8	5.7
65 +	/	/	/	/	/	...	/	/

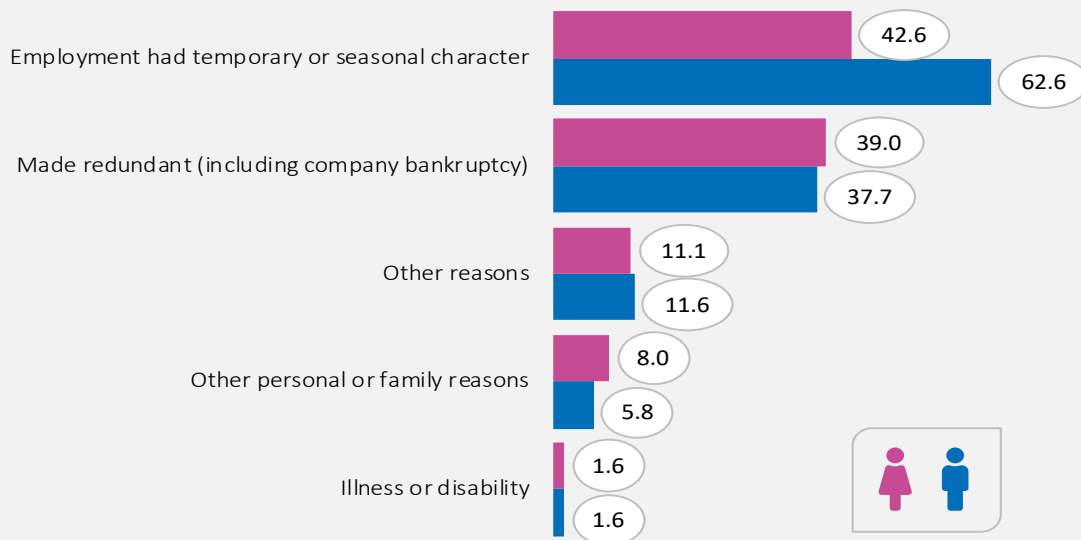
3.2. Unemployed by highest completed education level, sex, region and type of settlement, 2021 (in thous.)

	Republic of Serbia							
	Total	Srbija – sever		Srbija – jug			Type of settlement	
		Beo-gradski region	Region Vojvodine	Region Šumadije i Zapadne Srbije	Region Južne i Istočne Srbije	Region Kosovo i Metohija	Urban	Other
Unemployed (15–74)	352.4	73.2	81.5	113.6	84.1	...	214.2	138.2
No formal education	1.5	/	/	/	/	...	/	/
Primary	59.1	7.1	18.5	17.1	16.4	...	26.3	32.8
Secondary	217.4	41.4	48.7	75.4	51.9	...	129.5	87.9
Higher	74.5	24.6	13.6	21.1	15.2	...	57.9	16.6
Male (15–74)	180.4	34.0	45.2	57.8	43.4	...	109.0	71.4
No formal education	/	/	/	/	/	...	/	/
Primary	31.5	3.9	9.9	8.7	8.9	...	14.1	17.3
Secondary	120.1	20.2	29.9	41.7	28.3	...	71.6	48.5
Higher	28.3	9.8	5.2	7.3	5.9	...	23.1	5.2
Female (15–74)	172.0	39.2	36.3	55.8	40.7	...	105.2	66.8
No formal education	/	/	/	/	/	...	/	/
Primary	27.6	3.2	8.6	8.3	7.5	...	12.1	15.5
Secondary	97.3	21.2	18.8	33.7	23.6	...	57.9	39.4
Higher	46.2	14.8	8.4	13.8	9.3	...	34.8	11.4

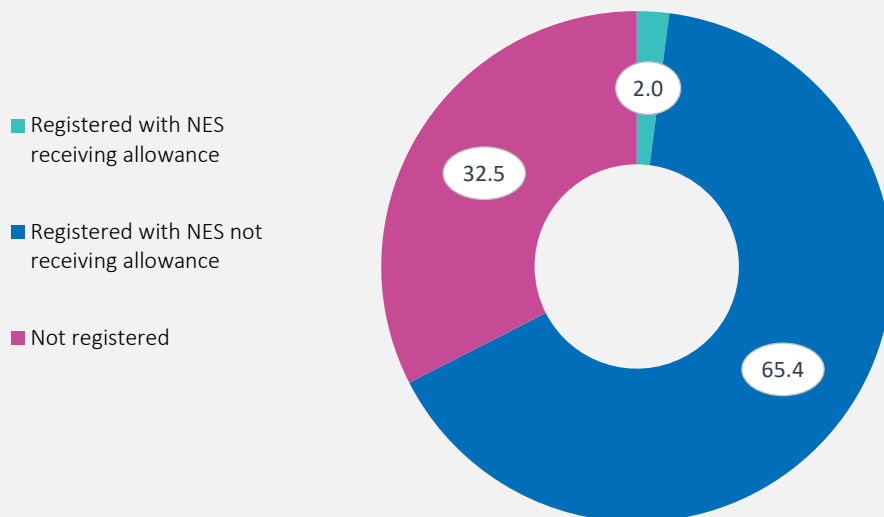
Graph. 18. Unemployed by area of education (in thous.), 2021



Graph 19. Main reasons of employment termination of unemployed who stopped working in previous seven years, by sex, 2021 (in thous.)



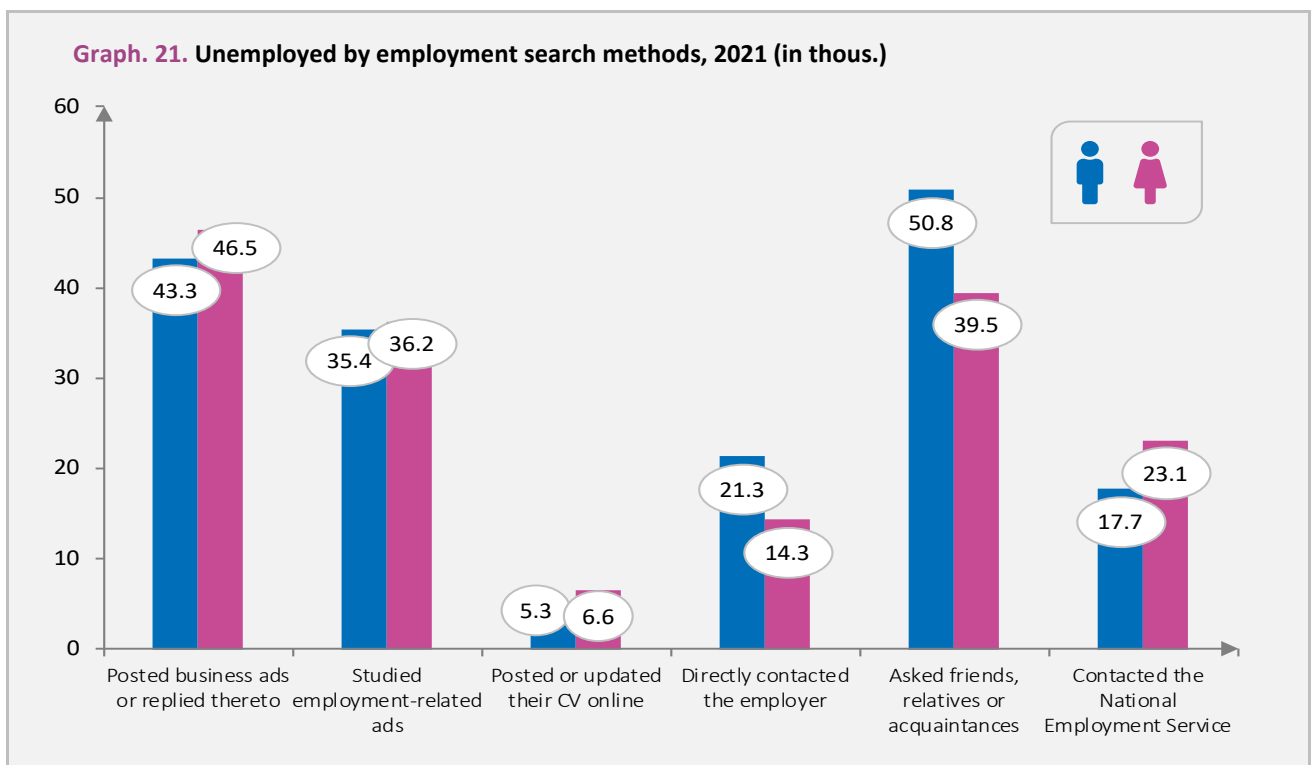
Graph 20. Unemployed persons according to the National Employment Service records, 2021 (%)



3.3. Unemployed by duration of employment search, sex, region and type of settlement, 2021 (in thous.)

	Republic of Serbia							
	Total	Srbija – sever		Srbija – jug			Type of settlement	
		Beo-gradski region	Region Vojvodine	Region Šumadije i Zapadne Srbije	Region Južne i Istočne Srbije	Region Kosovo i Metohija	Urban	Other
Unemployed (15–74)	352.4	73.2	81.5	113.6	84.1	...	214.2	138.2
In search of employment less than 12 months	176.5	42.1	47.2	50.6	36.6	...	108.1	68.3
In search of employment 12–24 months	62.2	12.2	13.0	21.9	15.1	...	38.5	23.7
In search of employment 2–4 years	28.5	4.6	5.1	12.0	6.8	...	17.1	11.4
In search of employment more than four years	85.3	14.3	16.3	29.0	25.6	...	50.5	34.7
Long-term unemployment rate (%)	5.5	3.8	4.0	7.0	7.7		5.7	5.2
Male (15–74)	180.4	34.0	45.2	57.8	43.4	...	109.0	71.4
In search of employment less than 12 months	92.8	20.3	25.9	27.6	19.0	...	57.5	35.3
In search of employment 12–24 months	32.6	5.5	7.5	10.8	8.8	...	19.3	13.3
In search of employment 2–4 years	14.4	2.2	2.5	5.7	4.1	...	8.3	6.0
In search of employment more than four years	40.6	6.1	9.3	13.7	11.5	...	23.9	16.7
Long-term unemployment rate (%)	4.9	3.2	4.0	5.9	7.0		5.2	4.6
Female (15–74)	172.0	39.2	36.3	55.8	40.7	...	105.2	66.8
In search of employment less than 12 months	83.6	21.8	21.3	23.0	17.6	...	50.6	33.0
In search of employment 12–24 months	29.6	6.7	5.4	11.1	6.3	...	19.2	10.3
In search of employment 2–4 years	14.2	2.5	2.7	6.4	2.7	...	8.8	5.4
In search of employment more than four years	44.7	8.3	6.9	15.3	14.1	...	26.6	18.0
Long-term unemployment rate (%)	6.2	4.4	4.1	8.3	8.7		6.2	6.2

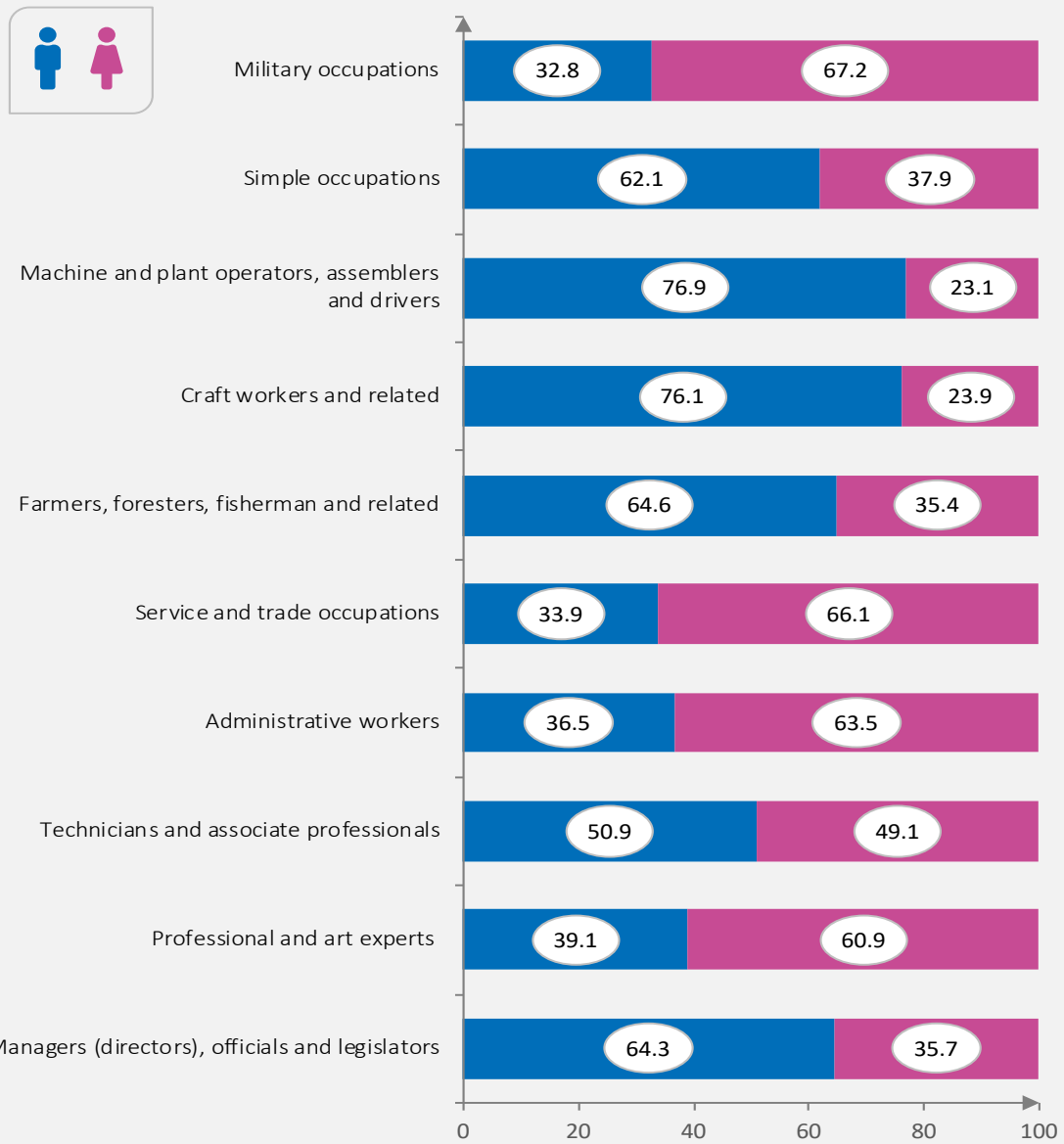
Graph. 21. Unemployed by employment search methods, 2021 (in thous.)



3.4. Unemployed by having previous experience, professional status on previous job, sex, region and type of settlement, 2021 (in thous.)

	Republic of Serbia							
	Total	Srbija – sever		Srbija – jug			Type of settlement	
		Beo-gradski region	Region Vojvodine	Region Šumadije i Zapadne Srbije	Region Južne i Istočne Srbije	Region Kosovo i Metohija	Urban	Other
Unemployed (15–74)	352.4	73.2	81.5	113.6	84.1	...	214.2	138.2
By having previous work experience								
Had work experience	271.4	62.3	67.0	78.7	63.3	...	167.6	103.8
By professional status on the previous job								
Self-employed with employees	3.0	/	/	1.8	/	...	2.7	/
Self-employed w/o employees	19.4	4.4	4.4	6.1	4.5	...	11.7	7.7
Employees	198.6	47.6	52.6	52.9	45.5	...	122.2	76.4
Unpaid family worker	/	/	/	/	/	...	/	/
Without work experience	81.0	10.9	14.5	34.9	20.8		46.6	34.4
Male (15–74)	180.4	34.0	45.2	57.8	43.4	...	109.0	71.4
By having previous work experience								
Had work experience	141.1	29.8	37.8	39.8	33.7	...	85.5	55.6
By professional status on the previous job								
Self-employed with employees	2.2	/	/	1.2	/	...	1.9	/
Self-employed w/o employees	14.3	3.2	3.4	4.9	2.7	...	8.4	6.0
Employees	102.5	22.0	29.0	26.6	24.8	...	62.0	40.5
Unpaid family worker	/	/	/	/	/	...	/	/
Without work experience	39.4	4.2	7.4	18.0	9.7		23.6	15.8
Female (15–74)	172.0	39.2	36.3	55.8	40.7	...	105.2	66.8
By having previous work experience								
Had work experience	130.3	32.6	29.2	38.9	29.6	...	82.1	48.2
By professional status on the previous job								
Self-employed with employees	/	/	/	/	/	...	/	/
Self-employed w/o employees	5.1	1.1	1.0	1.2	1.8	...	3.4	1.8
Employees	96.1	25.5	23.6	26.3	20.7	...	60.2	35.9
Unpaid family worker	/	/	/	/	/	...	/	/
Without work experience	41.7	6.7	7.1	16.9	11.1	...	23.1	18.6

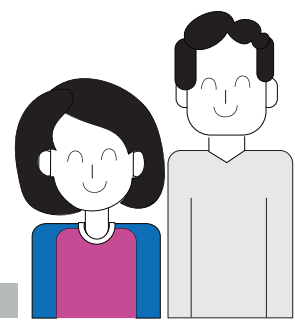
Graph. 22. Unemployed by occupation at previous job and sex (in %), 2021



3.5. Unemployed aged 15-64 by National Employment Service records, sex, region and type of settlement, 2021 (in thous.)

	Republic of Serbia							
	Total	Srbija – sever		Srbija – jug			Type of settlement	
		Beo-gradski region	Region Vojvodine	Region Šumadije i Zapadne Srbije	Region Južne i Istočne Srbije	Region Kosovo i Metohija	Urban	Other
Unemployed (15–64)	351.2	72.9	81.2	113.3	83.7	...	213.6	137.6
By NES records								
Registered with NES receiving allowance	7.2	1.4	2.1	2.3	1.4	...	4.2	3.0
Registered with NES not receiving allowance	230.3	38.7	48.5	81.6	61.5	...	135.4	94.9
Not registered	113.6	32.8	30.6	29.4	20.9	...	74.0	39.6
Male (15–64)	179.5	33.7	45.1	57.5	43.1	...	108.5	70.9
By NES records								
Registered with NES receiving allowance	3.2	/	/	1.0	/	...	1.4	1.7
Registered with NES not receiving allowance	108.5	14.6	25.3	39.2	29.5	...	63.7	44.8
Not registered	67.8	18.3	19.0	17.3	13.1	...	43.4	24.4
Female (15–64)	171.7	39.2	36.1	55.8	40.6	...	105.1	66.6
By NES records								
Registered with NES receiving allowance	4.0	/	1.3	1.3	/	...	2.8	1.3
Registered with NES not receiving allowance	121.8	24.1	23.3	42.4	32.0	...	71.7	50.1
Not registered	45.9	14.5	11.5	12.1	7.7	...	30.6	15.3

4



Inactive

4.1. Population outside the labor force by age groups, sex, region and type of settlement, 2021 (in thous.)

	Republic of Serbia							
	Total	Srbija – sever		Srbija – jug			Type of settlement	
		Beo-gradski region	Region Vojvodine	Region Šumadije i Zapadne Srbije	Region Južne i Istočne Srbije	Region Kosovo i Metohija	Urban	Other
Popularion outside the labor force, 15+	2655.7	609.6	713.6	715.1	617.4	...	1567.9	1087.8
15–24 years	463.4	107.0	116.6	130.7	109.0	...	297.8	165.5
25–34	140.5	30.0	40.8	35.2	34.5	...	81.3	59.2
35–44	120.0	28.4	33.7	32.2	25.6	...	65.7	54.3
45–54	160.4	29.3	46.8	41.8	42.5	...	81.0	79.4
55–64	420.7	89.4	123.5	109.3	98.5	...	233.6	187.0
65 +	1350.8	325.5	352.2	365.8	307.2	...	808.5	542.3
Male, 15+	1049.5	237.6	271.3	283.6	257.0	...	625.6	423.9
15–24 years	211.9	50.1	52.9	58.1	50.8	...	140.0	72.0
25–34	43.6	9.6	10.8	11.7	11.5	...	29.7	13.9
35–44	37.2	8.1	10.2	9.9	9.0	...	21.4	15.8
45–54	52.7	10.1	15.5	12.9	14.3	...	31.2	21.5
55–64	149.1	31.8	41.4	36.5	39.5	...	82.0	67.1
65 +	555.0	128.0	140.5	154.5	132.0	...	321.3	233.7
Female, 15+	1606.2	371.9	442.4	431.5	360.3	...	942.3	663.8
15–24 years	251.4	57.0	63.7	72.6	58.2	...	157.9	93.6
25–34	96.9	20.4	29.9	23.6	23.0	...	51.6	45.3
35–44	82.9	20.3	23.6	22.3	16.7	...	44.3	38.5
45–54	107.6	19.2	31.3	28.9	28.2	...	49.7	57.9
55–64	271.5	57.5	82.1	72.8	59.0	...	151.6	119.9
65 +	795.8	197.5	211.7	211.3	175.2	...	487.2	308.6

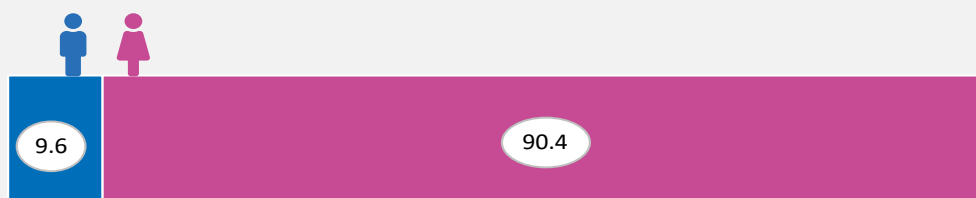
4.2. Population outside the labor force, aged 15-89, by education, sex, region and type of settlement, 2021. (in thous.)

	Republic of Serbia							
	Total	Srbija – sever		Srbija – jug			Type of settlement	
		Beo-gradski region	Region Vojvodine	Region Šumadije i Zapadne Srbije	Region Južne i Istočne Srbije	Region Kosovo i Metohija	Urban	Other
Population outside the labor force (15–89)	2632.2	601.1	709.7	709.5	612.0	...	1553.6	1078.6
No formal education	47.4	8.7	13.8	12.3	12.5	...	16.3	31.1
Primary	1074.1	162.5	295.1	331.3	285.2	...	484.1	590.0
Secindary	1191.8	306.8	325.5	304.6	255.0	...	785.8	405.9
Higher	318.9	123.0	75.3	61.3	59.3	...	267.3	51.5
Male (15–89)	1040.1	234.3	269.7	281.1	254.9	...	620.5	419.6
No formal education	10.6	2.5	3.1	2.3	2.8	...	3.6	7.0
Primary	367.3	52.0	96.4	116.3	102.7	...	162.9	204.4
Secindary	515.3	126.0	137.9	132.9	118.5	...	330.7	184.6
Higher	146.8	53.8	32.4	29.7	30.9	...	123.2	23.7
Female (15–89)	1592.1	366.8	439.9	428.3	357.1	...	933.1	659.0
No formal education	36.8	6.2	10.8	10.0	9.8	...	12.7	24.1
Primary	706.8	110.5	198.7	215.0	182.6	...	321.2	385.6
Secindary	676.5	180.8	187.6	171.7	136.5	...	455.1	221.4
Higher	172.0	69.2	42.8	31.6	28.3	...	144.1	27.9

4.3. Population outside the labor force, aged 15-74, by desire and employment opportunities, sex and region, 2021 (in thous.)

	Republic of Serbia							
	Total	Sex		Srbija – sever		Srbija – jug		
		male	female	Beo-gradski region	Region Vojvodine	Region Šumadije i Zapadne Srbije	Region Južne i Istočne Srbije	Region Kosovo i Metohija
Population outside the labor force (15-74)	2108.3	836.1	1272.1	481.0	575.2	562.5	489.6	...
By desire and employment opportunity								
Desire and able to work	169.5	83.3	86.2	42.0	44.2	41.4	41.9	...
Desire but unable to work due to:	68.2	23.3	44.9	16.7	22.2	13.5	15.8	...
Education or training	11.6	4.9	6.7	3.6	3.3	/	3.9	...
Illness or disability	16.8	7.5	9.3	3.8	5.0	4.7	3.3	...
Child or relatives care	17.9	1.2	16.7	4.4	6.1	3.5	3.9	...
Personal and family reasons	13.3	5.2	8.1	2.8	4.8	3.2	2.6	...
Other reasons	8.6	4.5	4.1	2.1	2.9	1.3	2.2	...
Do not desire to work due to personal reasons:	1870.6	729.5	1141.0	422.4	508.8	507.5	431.9	...
Education or training	429.3	194.3	235.0	98.0	106.9	124.1	100.3	...
Illness or disability	308.4	133.3	175.1	72.5	88.0	79.3	68.6	...
Child or relatives care	84.7	3.2	81.5	16.0	24.5	27.2	17.0	...
Other personal or family reasons	193.5	42.3	151.3	40.4	61.8	54.5	36.9	...
Pension	738.4	318.7	419.7	178.4	205.2	196.5	158.3	...
Other reasons	116.2	37.7	78.5	17.1	22.3	25.9	50.8	...

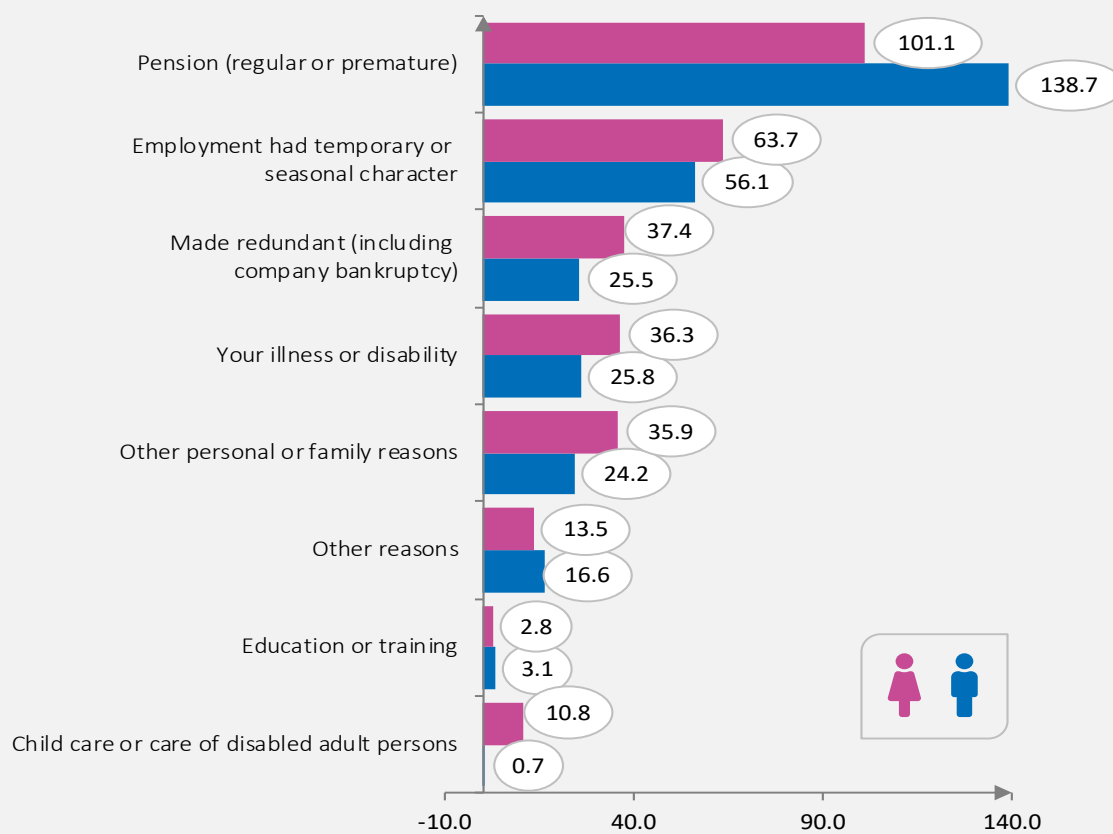
Graph. 23. Population outside the labor force not in search of employment due to child care or adult disabled person care, by sex, 2021 (in %)



4.4. Population outside the labor force, aged 15-89, by previous work experience, sources of income, sex and region, 2021 (in thous.)

	Republic of Serbia							
	Total	Sex		Srbija – sever		Srbija – jug		
		male	female	Beo-gradski region	Region Vojvo-dine	Region Šuma-dije i Zapadne Srbije	Region Južne i Istočne Srbije	Region Kosovo i Metohija
Population outside the labor force (15-89)	2632.2	1040.1	1592.1	601.1	709.7	709.5	612.0	...
By previous work experience								
Had previous work experience	1847.3	792.1	1055.2	444.9	515.8	473.3	413.2	...
No work experience	784.9	247.9	537.0	156.1	193.8	236.2	198.8	...
By main sources of income								
Salary/pension of spouse/parent/other household members	963.4	312.9	650.5	207.4	258.7	265.8	231.4	...
Support from other relatives/friends	35.7	15.6	20.1	8.2	6.9	11.5	9.2	...
Own pension	1482.1	633.8	848.3	365.3	391.1	393.6	332.1	...
Income from insurance in case of unemployment	9.1	5.5	3.6	1.1	1.9	3.8	2.3	...
Student grant/student loan	3.3	/	2.3	/	1.5	/	/	...
Occasional jobs/small-range agricultural production	34.6	24.7	10.0	2.5	11.7	11.2	9.3	...
Welfare	71.3	29.4	41.9	9.8	28.0	15.2	18.2	...
Parent allowance	2.8	/	2.2	/	/	/	/	...
Revenue from rents/interest/dividend	2.9	1.4	1.5	/	2.2	/	/	...
Savings	12.0	7.0	5.0	2.7	3.0	4.4	2.0	...
Credits or borrowings	/	/	/	/	/	/	/	...
Aid from charity or religious organizations	/	/	/	/	/	/	/	...
Other	14.7	8.2	6.5	2.4	3.8	2.9	5.5	...

Graph. 24. Major reasons of employment termination of population outside the labor force, who stopped working in the past 7 years, by sex, 2021 (in thous.)



4.5. Underutilized and potential labor force, aged 15–74, 2021 (in thous.)

	Republic of Serbia							
	Total	Sex		Srbija – sever		Srbija – jug		
		male	female	Beo-gradski region	Region Vojvodine	Region Šumadije i Zapadne Srbije	Region Južne i Istočne Srbije	Region Kosovo i Metohija
Total (15–74)	262.6	137.2	125.3	67.3	69.9	64.6	60.7	...
Underused labor force¹⁾	75.8	47.2	28.7	22.1	20.2	18.9	14.7	...
Potential labor force²⁾	186.7	90.1	96.6	45.2	49.7	45.8	46.1	...
In search of employment but unable to work ³⁾	18.1	7.2	10.9	3.5	5.6	4.7	4.3	...
Able to work but not in search of employment ⁴⁾	168.6	82.9	85.7	41.7	44.1	41.1	41.7	...

¹⁾ Includes persons who work part-time and wish and are able to work more hours.

²⁾ Includes inactive persons connected to the labour market in some way.

³⁾ Includes the following categories of inactive population: persons in search of employment, and persons who have already found employment but are unable to start working within two weeks; persons who have found employment where they should start working within the period longer than three months.

⁴⁾ Includes persons who desire and are able to start working within two weeks although they were not in search of employment.



Methodological explanations



METHODOLOGICAL EXPLANATIONS

Labour Force Survey (LFS) is a survey envisaged to collect the data on the main characteristics of labour force in order to evaluate the total labour force in the country. The overall objective of the survey is to obtain data on three basic, mutually exclusive contingents of the population: employed, unemployed and outside the labor force population – on their demographic, social-economic, educational and other characteristics.

Data obtained from LFS is used for monitoring, measuring and evaluating economic and social trends both in the Republic of Serbia and for international comparison. In terms of methodology, organization, sampling, questionnaire design and definitions of employed/unemployed the LFS is implemented in compliance with standards and recommendations of the International Labour Organization (ILO) and regulations of the European Statistical Office (Eurostat), which enables comparison of data obtained from the LFS with equivalent data from other (especially European) countries.

The survey results are published in aggregated form, which completely ensures the confidentiality of individual data on households and persons pursuant to the Official Statistics Law (Official Gazette of RS, No 104/09).

Since January 2021, the Labor Force Survey has been implemented based on and in compliance with the new Regulation of the European Parliament and Council. The new European regulation requires the EU countries and candidate countries apply new redesigned concepts in the LFS since 2021.

The objective of revising the methodology is to improve the contents of the Survey in order to provide more precise monitoring of trends on the labor market, considering the constant changes in its dynamics and structure.

Introduction the new, standardized questionnaire ensures improvement of the overall quality of data and their international comparability. The Republic of Serbia, i.e. the Statistical Office of the Republic of Serbia as a member of the European Statistical System adjusts to the changes in the European legislation parallel with other European countries.

The changes that have been introduced in the LFS since 2021 refer mainly to the definitions and manner of specifying certain categories of population on the labor market – employed persons, unemployed persons and outside the labor force persons – as well as to the scope and range of variables devoted to their additional characteristics.

Modifications of definitions result from the application of provisions of the Resolution concerning statistics of work, employment and labour underutilization adopted in 2013 at the 19th International Conference of Labour Statisticians in Geneva, recommended for use by the International Labor Organization (ILO).

The most significant change in the definition of the employed refers to the exclusion from the contingent of employees of those persons who produce agricultural goods and services intended for personal consumption, i.e. without placing the product on the market. The change in the contingent of employed persons consequently affects the change in the contingents of unemployed persons and outside the labor force persons.

Unit of interview

The unit of interview is any member of randomly selected household. The basic socio-demographic data are collected for all members of the selected households, however for the labor activity data are collected only for persons aged 15 and over.

Period of observation

Starting from 2015, LFS has been implemented as a continuous survey. Each week in a year is regarded as the observed (reference) week. The interview period lasts two weeks after the observed week. A reference week is specified for each household in the sample. As one household appears four times in the sample, the interval between two successive appearances in the sample, i.e. interviews, cannot be shorter than three months.

The observation period for the first quarter included 13 reference weeks and it lasted from 4 January to 4 April 2021, while the interview period lasted from 11 January to 18 April 2021.

The observation period for the second quarter included 13 reference weeks and it lasted from 5 April to 4 July 2021, while the interview period lasted from 12 April to 18 July 2021.

The observation period for the third quarter included 13 reference weeks and it lasted from 5 July to 3 October 2021, while the interview period lasted from 12 July to 17 October 2021.

The observation period for the fourth quarter included 14 reference weeks and it lasted from 4 October 2021 to 2 January 2022, while the interview period lasted from 11 October 2021 to 16 January 2022.

For the purpose of Labour Force Survey, **week** is defined as a seven-day period of time, starting on Monday and ending on Sunday inclusive.

Definitions

Starting from 2021, the Labor Force Survey has been implemented on the basis of Regulation (EU) 2019/1700 of the European Parliament and Council of 10 October 2019, which establishes a common framework for European statistics on persons and households based on data on individuals collected on the basis of a sample, which amends Regulations (EC) 808/2004, (EC) 452/2008 and (EC) 1338/2008 of the European Parliament and of the Council and repeal Regulation (EC) 1177/2003 of the European Parliament and of the Council and Regulation (EC) 577/98, and in particular Article 7 paragraph 1, Article 8, paragraph 3 and Article 13, paragraph 6 thereof. The new Regulation (EU) 2019/1700, on which basis the Survey is conducted, is based on the application of provisions "Resolutions on labor statistics, employment and underutilized labor", which was adopted in 2013 at the 19th International Conference of Labor Statisticians in Geneva and recommended for use by the International Labor Organization (ILO).

A household is

a) any family or other community of persons who declare that: 1) they live together in the entire residential unit or in any part thereof; 2) they provide food for themselves and meet other basic needs for living; 3) they share revenue or household expenses with other members of the household. Sharing household income means contributing to or benefiting from household revenue.

b) any person living alone (single-member household), who does not have own household in another place, who lives in a separate or shared apartment as a single person or as a tenant, regardless of whether s/he lives in the same room with another single person or members of the landlord's household, but does not spend her/his revenue with them but only pays for housing services.

The survey does not include collective households (student dormitories, homes for children and youth with mental and physical disabilities, homes for socially vulnerable children, homes for the elderly and infirm, homes for adults with disabilities, monasteries, etc.).

Employed population includes persons aged 15–89 who belonged to one of the following categories during the observation week:

- Persons who worked at least one hour for earnings or income during the observed week, including unpaid family workers;

- Persons who have a job or business from which they were temporarily absent during the entire observed week, but are related to the job, such as:
 - Persons absent from work due to holidays, redistribution of working hours, sick leave, maternity leave, work-related training related;
 - Persons on parental leave, whether receiving earnings or benefits from work from which they are absent, or whose expected duration of parental leave is up to 3 months;
 - Seasonal workers out of season, if they continue to regularly perform tasks and duties for the job or business from which they are absent, excluding the fulfillment of legal or administrative obligations;
 - Persons who did not work in the observed week for some other reasons, and whose expected duration of absence is up to 3 months;
 - Persons producing agricultural products, the main part of which is intended for sale or exchange (barter).

Persons producing goods for own use, volunteers, persons in unpaid training and persons involved in other forms of work, based on the Resolution on labor statistics, employment and underutilization of labor adopted in 2013 at the 19th International Conference of Labor Statisticians, are not included in the contingent of employed based on these activities.

According to the employed' **Professional Status Classification**, they are divided into self-employed, employees and unpaid family workers.

Self-employed are persons who work independently in their own company, institution, private shop or on an agricultural holding, as well as persons who perform independent professional activity or some other job for their own account.

Employees are persons working for an employer in any kind of ownership, regardless of whether they have a formal employment contract or work on the basis of an oral agreement. Members of the household who help with family work and who are paid for their work are considered employed workers.

Unpaid family workers are relatives who help in the family business or on the family holding, without earnings or income. These include e.g. a son or daughter working in their parents' company / on a holding without compensation; a woman who helps her husband without compensation, etc. This also includes relatives who live elsewhere but come to help with the business, e.g. during the harvest season, without payment in cash or in kind.

Unemployed population includes persons aged 15-74 who:

- In the observed week, were not employed in accordance with the definition of employment given in the text above;
- Are currently available for work, i.e. they are available to start working as paid employees or self-employed within two weeks after the observation week;
- Are actively looking for a job, whether they have taken activities in the previous four weeks conclusive with the observed week, in order to look for paid employment or self-employment, or have found a job to start working no later than three months after the observation week.

Seasonal workers who did not work during the observed week (because they are out of season), but who expect to return to their seasonal work, are considered to have found a job.

Active population (labor force) consists of all employed and unemployed persons.

Outside the labor force population includes:

- Persons younger than 15;
- Persons older than 89;
- Persons aged between 15 and 89 who were not employed or unemployed during the observed week according to the definitions of employment and unemployment given in the text above.

Potentially active population (potential labor force) includes outside the labor force population that is in some way connected with the labor market. It consists of people who are actively in search of employment but cannot start working immediately (i.e. within two weeks) as well as person who desire and can start working immediately although they not in search of employment.

Subjective employment status is employment status of the respondent according to his/her own opinion, and not according to his/her actual activity in the observed week.

Employment rate is the share of employees in the total observed population (population aged 15+).

Informal employment is considered to be work in unregistered business entities, work in registered business entities without an employment contract, and work of unpaid family workers.

Informal employment rate is the share of informally employed in total employment.

Unemployment rate is the share of the unemployed in the labor force (employed and unemployed).

Long-term unemployment rate is the share of persons in the labor force (employed and unemployed) who have been unemployed for more than one year.

NEET rate is the participation of persons aged 15-24 (or 15-29) who are not employed, not attending education or training in the total population of that age.

Activity rate (labor force participation) is the share of the active population in the total observed population (population aged 15+).

Outside the labor force population rate is the share of outside the labor force population in the total observed population (population aged 15+).

Classifications

The following classifications were used in coding and processing the data obtained by the survey:

- Classification of Activities of the European Union (NACE rev. 2), which is comparable to the Classification of Activities of the United Nations (ISIC - rev. 4);
2. International Standard Classification of Occupations (ISCO - 08);
3. International Standard Classification of Education (ISCED – 2011);
4. Classification of Fields of Education (ISCED-F 2013) supplementing the International Standard Classification of Education (ISCED – 2011);
5. International Classification of Status in Employment (ICSE-93).

Sample design

The **basic set** consists of households and persons referring to the common population in the territory of the Republic of Serbia without the Region of Kosovo and Metohia. Excluded are persons in collective households (students dormitories, homes for children and youth with disabilities, homes for socially vulnerable children, homes for pensioners, elderly and infirm, homes for adult disabled persons, monasteries etc.).

Type of sample – Two-stage, stratified sample. The first stage units are enumeration areas and the second stage units are households.

Stratification – Enumeration areas as primary sampling units are stratified by the type of settlement (city and other) and by territory at the NUTS 3 level (25 districts: Belgrade, West Bačka, South Banat, South Bačka, North Banat, North Bačka, Central Banat, Srem, Zlatibor, Kolubara, Mačva, Moravica, Pomoravlje, Rasina, Raška, Šumadija, Bor, Braničevo, Zaječar, Jablanica, Nišava, Pirot, Podunavlje, Pčinja and Toplica).

Sampling frame – The 2011 Serbian Population Census was used as a frame for the selection of the enumeration areas and households. It was formed by excluding all enumeration areas with 19 or less households. The frame was therewith reduced by about 1.5% in regard to the basic set.

Sample size – The target sample size amounts to 76 960 households in 7 696 enumeration areas.

Sample allocation – Proportional allocation according on the number of persons aged 15+ within the type of settlement and territory was slightly corrected in order to get better precision of evaluation at the level of districts and uniform distribution of the sample in the time. Each subsample allocated for a quarter is randomly and uniformly distributed to 13 weeks for all four quarters. 52 weeks were observed in 2021.

Sample selection – The sample for 2021 consists of nine independent subsamples selected according to the same sample pattern. The first stage units (enumeration areas) are selected systematically with probability proportional to the number of population aged 15+. Enumeration areas within each stratum were sorted according to the municipality they belong to and the order number within the municipality. High level of implicit geographic stratification and effective sample distribution were ensured this way along with the systematic selection. The second stage units (households) were selected with equal probabilities (simply randomly).

Rotation scheme – The Labour Force Survey is based on the sample rotating panel design by which each household participates for four times in a sample. The rotating scheme 2-2-2 was applied. Four subsamples (rotating groups) are allocated for each quarter. Each quarter (Q) in the sample includes: one new rotating group, two rotating groups from the previous quarter (Q-1) and one rotating group from Q-3 quarter. Based on the applied rotating scheme, each household and person selected in the sample is interviewed 4 times within 18 months, i.e. each household and person is in the sample for two consecutive quarters, then out of the sample for two quarters and again in the sample for two consecutive quarters.

Sample realization – The total of 109 060 persons were interviewed, and data on working activity were collected for 98 473 persons, which makes 1.7% of the total number of population aged 15+.

Evaluation system – To make the results from the sample representative for the observed general population, each household and person in the sample were appended a weight (expansion factor). The major component of the weight is the reciprocal value of the product of the probabilities of selection at every stage for each stratum and represents the base weight (sample design weight). The second component of the weight takes into account the level of non-responses for a household. Response rates were calculated after the completion of fieldwork. These were used to correct the sample design weights calculated for each enumeration area. The final weight for a person and household is calculated on the basis of the corrected weight for the household with use of calibration method.

Calibration is a procedure used to multiply the sampling weights by factors (calibration factors) so that the obtained results agree with known totals. Calibration is a practical approach of incorporating auxiliary information in the evaluation phase, which serves to correct deviations of certain contingents of samples that cannot be avoided during field work. Data obtained on the basis of current demographic estimations are used as auxiliary information for every quarter.

Requirements that have to be met in calculation of calibration factors are as follows: distribution of population according to sex (two groups) by five-year age groups (14 groups), at the level of territory (NUTS 3 level) and distribution of household according to number of household members (six groups), at the level of district, provided that a household and each person from the observed household have the same final weight, which assures consistent results on the basis of households and on the basis of persons.

Estimates of totals, proportions and errors thereof are calculated for different indicators. During the publication of data, it is not possible to publish each result with its sampling error. To make the sampling error for data available to the users during data analysis, approximate values have been calculated based on the regression model. Approximate values of variation quotients for quarterly evaluations of totals and annual averages in tables 1 and 2, including Table User Instruction in this survey's methodology can find on the following link:

<http://pod2.stat.gov.rs/ObjavljenePublikacije/G2017/pdfE/G20177069.pdf>

 **Symbols**

- = no phenomena
- ... = data not available
- / = small number of phenomena – result not published

Communication and Information section

Phone: +38111 2401284

Email: stat@stat.gov.rs

Library

Phone: +38111 2412922, ext. 408

Email: biblioteka@stat.gov.rs

Number of pages: 84



682