



Modulair dive spread

Technical data sheet



Table of contents

Introduction	2
Dive Control Unit	3
Launch And Recovery System	4
Decompression chamber	6
Diver hot water unit	8



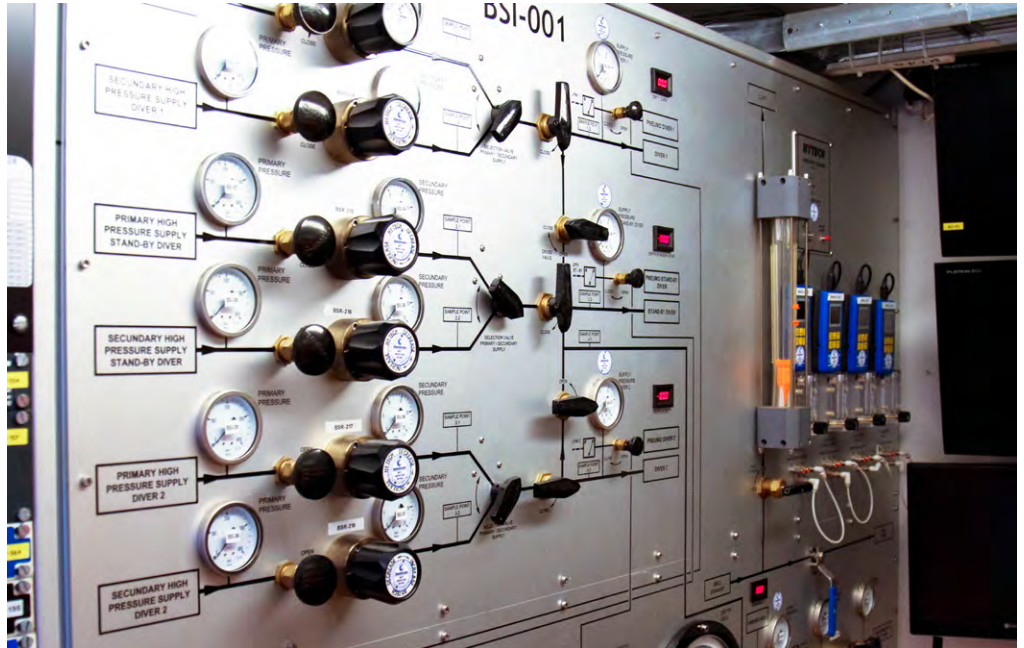


Introduction

Bluestream owns and operates various cutting-edge, modular, air-diving spreads. These allow us to execute complex subsea tasks up to 50 metres below the surface. The safety of our divers is paramount, as is our drive to succeed.



All of our state-of-the-art equipment is maintained by our in-house staff, operated by our highly skilled offshore personnel, and managed by our experienced project management team. It's this combination that enables us to perform complex, subsea operations in a safe, straightforward and efficient way.



Dive Control Unit

Bluestream’s dive control unit forms an integral part of our modular dive spreads. The dive control system is integrated into a stand alone container. This modular approach allows Bluestream to offer a flexible mobilisation onto both Clients vessel arrangements/platforms and/or vessels of opportunity.

Our IMCA Compliant dive control containers provide a safe and efficient approach to dive management for 2x working divers and 1x stand-by diver, whilst allowing the Dive Supervisor to monitor the various supplies of air, oxygen and/or mixed gas to each diver.

- Self contained designed for offshore use;
- Designed in-house based on experience from our own offshore diving projects, utilising specialised 3rd party components;
- Designed for rapid mobilisation;
- IMCA compliant;
- Oversize 20 ft / 15 ft container footprint.
- BSU-083 is also suitable for inwater decompression

Weights and dimensions

Bluestream owns and operates multiple types of dive control units. The weights and dimensions of the units are specified below.

Unit-ID	Length (mm)	Width (mm)	Height (mm)	Weight (kg)
BSU-083	6060	2790	2880	12500
BSU-024	4550	2550	2590	8000
BSU-012	4550	2550	2590	8000
BSU-081	4550	2550	2590	8000
BSU-035	6060	2440	2590	11000



Launch And Recovery System (LARS)

Bluestream’s diver LARS forms and integral part of our modular dive spreads. Each LARS system consists of a two man dive basket, man riding winches, umbilical management system and a hydraulic A-Frame for safe outboarding and deployment of the diver to the worksite.

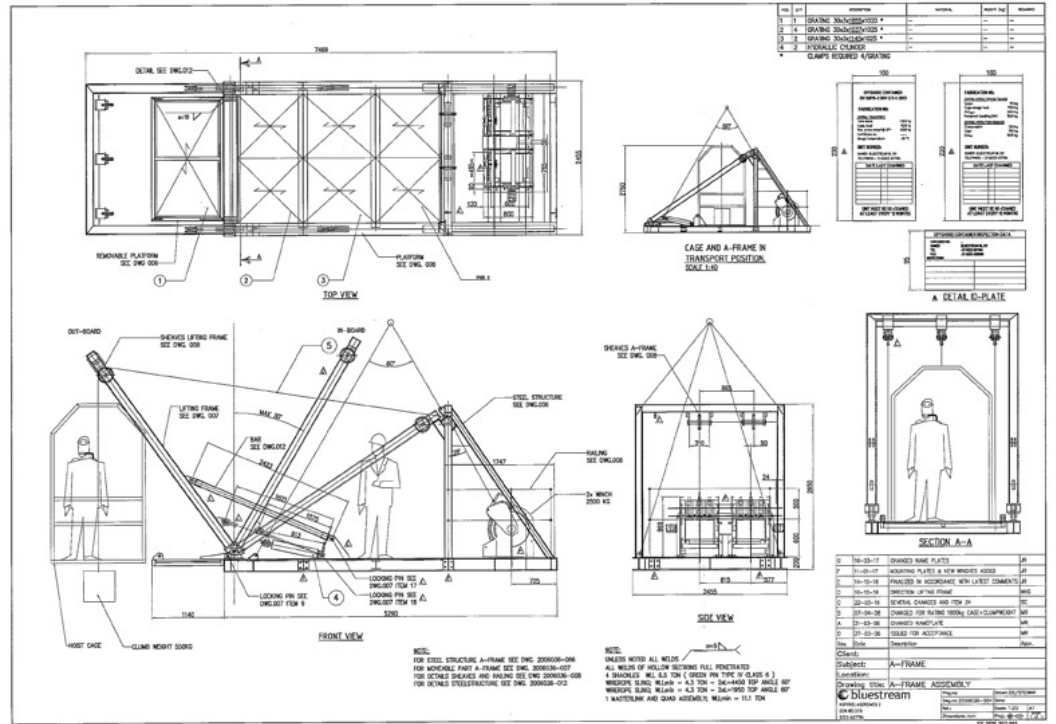
- Self contained designed for offshore use;
- Designed by specialised 3rd party manufacturers;
- Designed for rapid mobilisation;
- IMCA compliant;
- Compact footprint;
- Capable of diving to 50 msw.

Each Diver LARS system has the following approximate dimensions.

Weights and dimensions

Unit-ID	Length (mm)	Width (mm)	Height (mm)	Weight (kg)
BSA-016	5300	2460	2750	6330
BSA-017	5300	2460	2750	6330
BSA-018	5300	2460	2750	6330
BSA-019	5300	2460	2750	6330
BSA-020	4315	2940	2806	8500

General arrangement





Decompression chamber

Bluestream’s decompression chambers form an integral part of our modular dive spreads. The decompression chamber is integrated into a 20 ft container.

Each decompression chamber system consists of an offshore certified container complete with full decompression twin lock chamber facilities to accommodate 3 divers plus a Dive Medical Technician (DMT).

Each decompression chamber has the following approximate weight and dimensions.

Unit-ID	Diameter (mm)	Length (mm)	Width (mm)	Height (mm)	Weight (kg)
BSU-037	1800	6060	2440	2590	8500
BSU-019	1800	6060	2790	2880	10000
BSU-020	1800	6060	2790	2880	10000
BSU-082	1600	6060	2440	2590	8500

Weights and dimensions



Diver hot water unit

The diver hot water unit is designed to provide warm water to multiple divers to keeping them warm during their dives. The diver hot water unit consists of two main parts: the pump unit and a heating unit which are controlled via a designated control panel.

Upper heat unit

Power consumption	90 kW
Insulation class	IP65
Weight	200 kg
Dimensions (HxWxD)	1084 x 750 x 700 mm



Lower pump unit

Weight	300 kg
Dimensions (HxWxD)	700 x 750 x 700 mm

Pump

Weight	24 kg
Dimensions (HxWxD)	438 x 330 x 188 mm
Inlet pressure range	Flooded to 4.9 bar
Flow	59 L/min
Pressure range	7 to 105 bar
RPM	1450 rpm