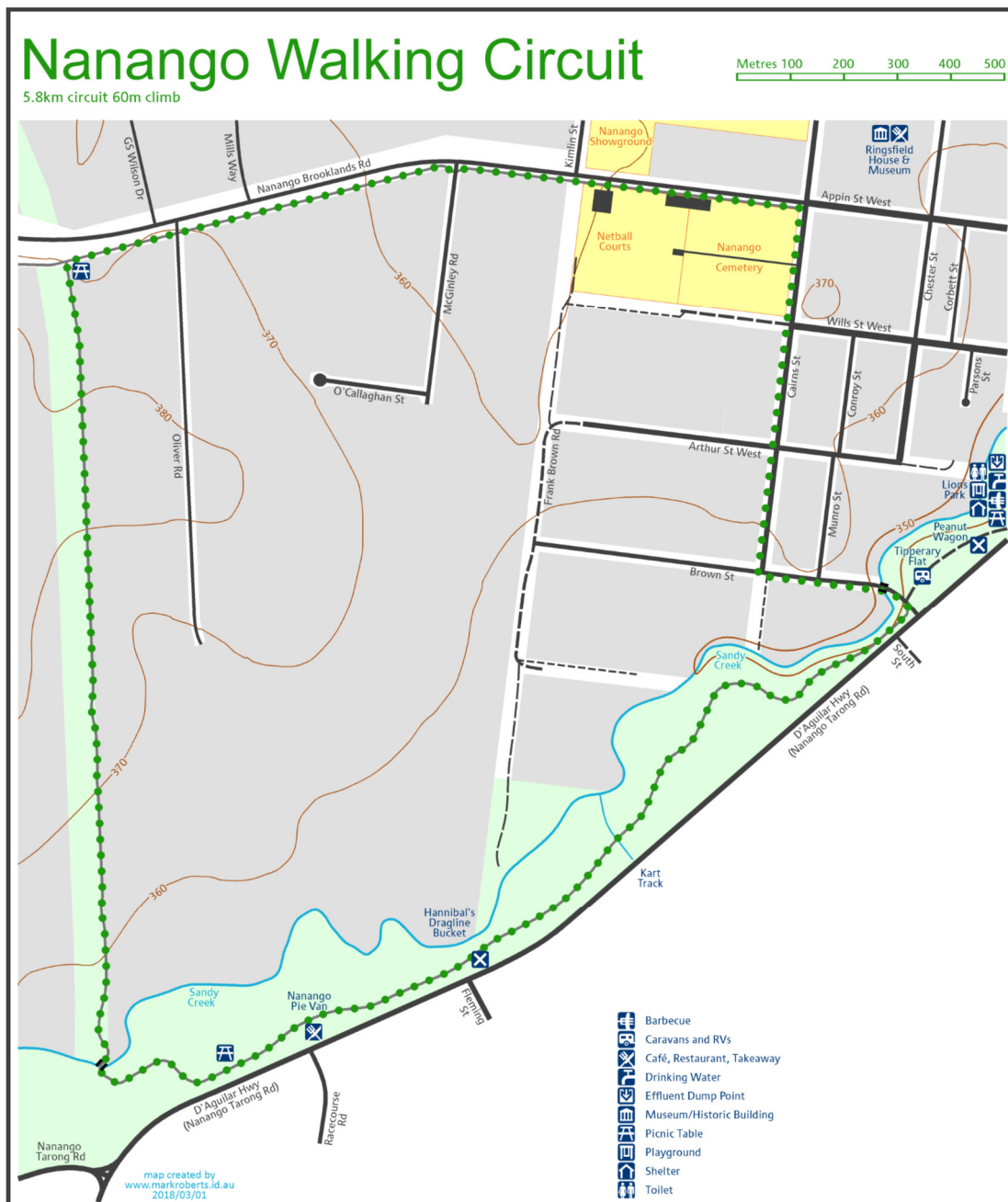


Ros Gregor Walking Track

Nanango

Being the 4th oldest town in Queensland, Nanango is also the first town that was established in the South Burnett region, it's a town rich in history. Tipperary Flat, situated at the southern entrance to Nanango, is a well equipped picnic area featuring historic displays with informative interpretive signs.

NOTE: The 5.8km Ros Gregor walking trail starts at Tipperary Flat, proceeds around Sandy Creek, joins up with the walking track past the Cemetery and back to the Lions Park.

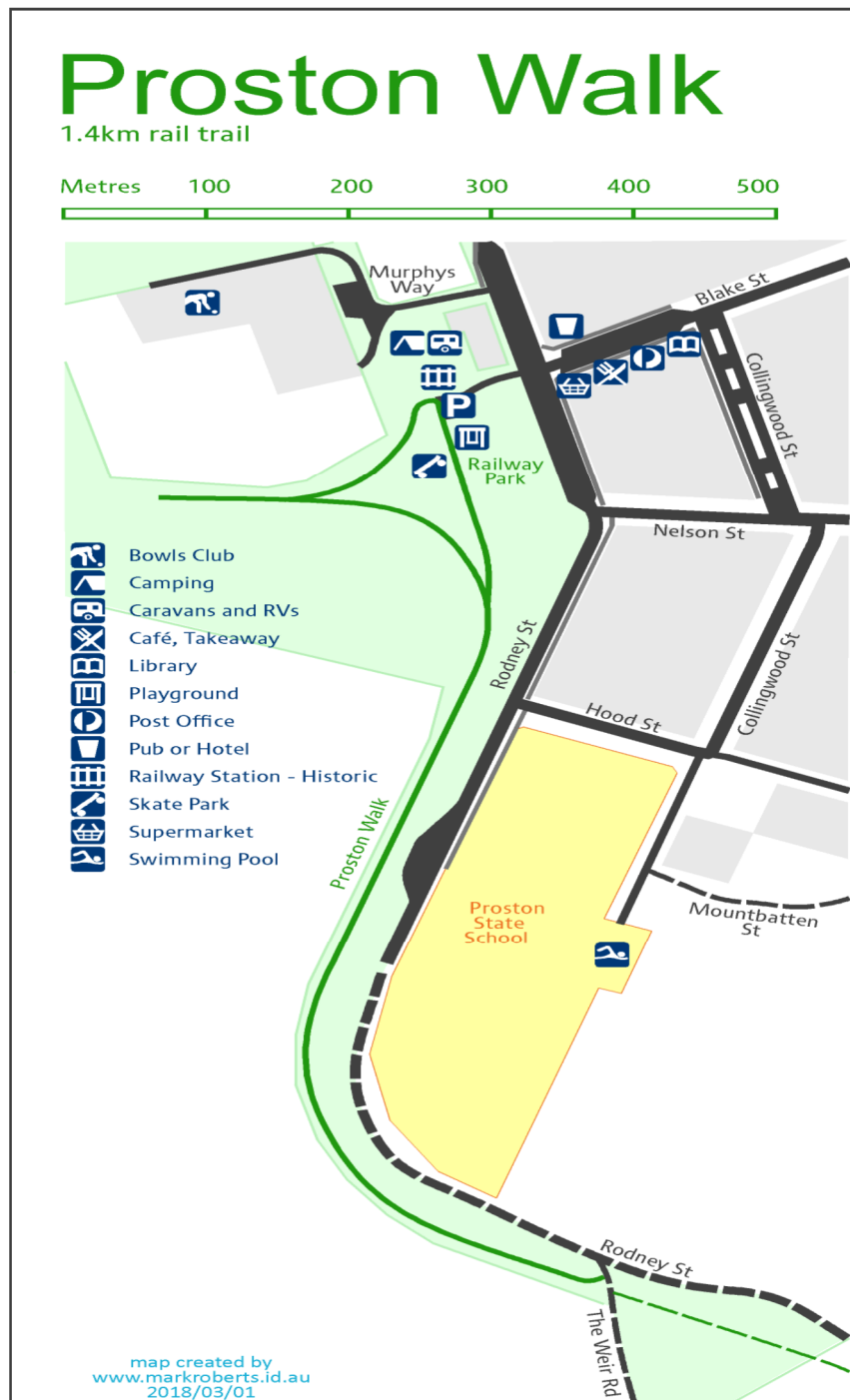


Proston Recreational Circuit

Proston

Once part of the historic grazing station of 'Wigton' one of Queensland's earliest squattages. Proston is also the gateway to Lake Boondooma caravan and Recreation Park.

NOTE: Situated in Rodney Street, this 1.4km walking track is centred around a BMX track for the kids. The pathway journeys alongside Rodney Street and makes for a peaceful and relaxing walk as you head out of town. The walk includes exercise equipment designed to enhance your workout.

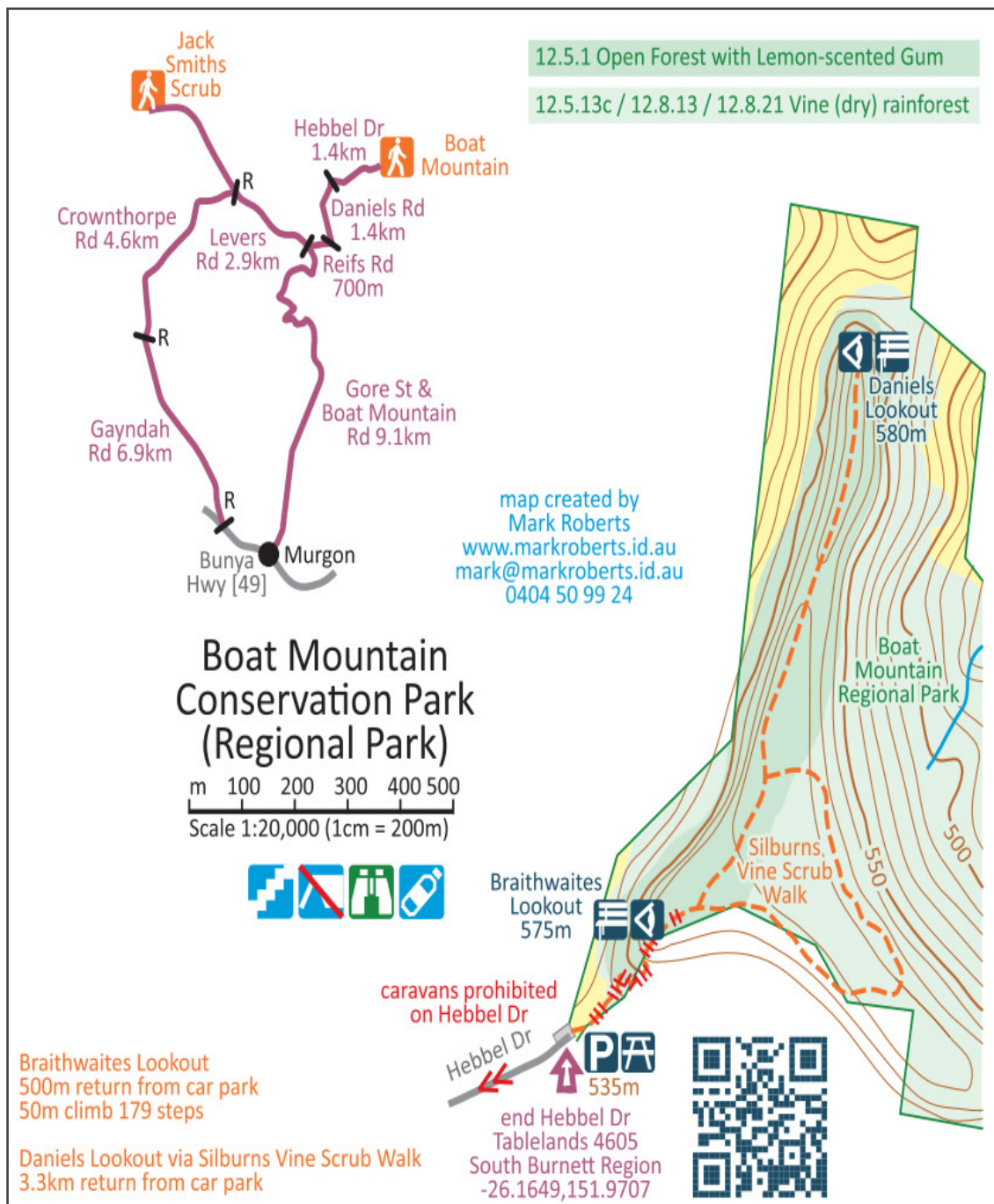


Boat Mountain Conservation Park

Murgon

Boat Mountain Conservation Park is a local landmark located north-east of Murgon. As the name suggests the distinctive flat-top ridge, resembles an up-turned boat.

NOTE: The park is relatively small with four walking tracks which range from 370m to 2.2km. The walk begins with many steps, however visitors will be rewarded with the 360 views from the top.

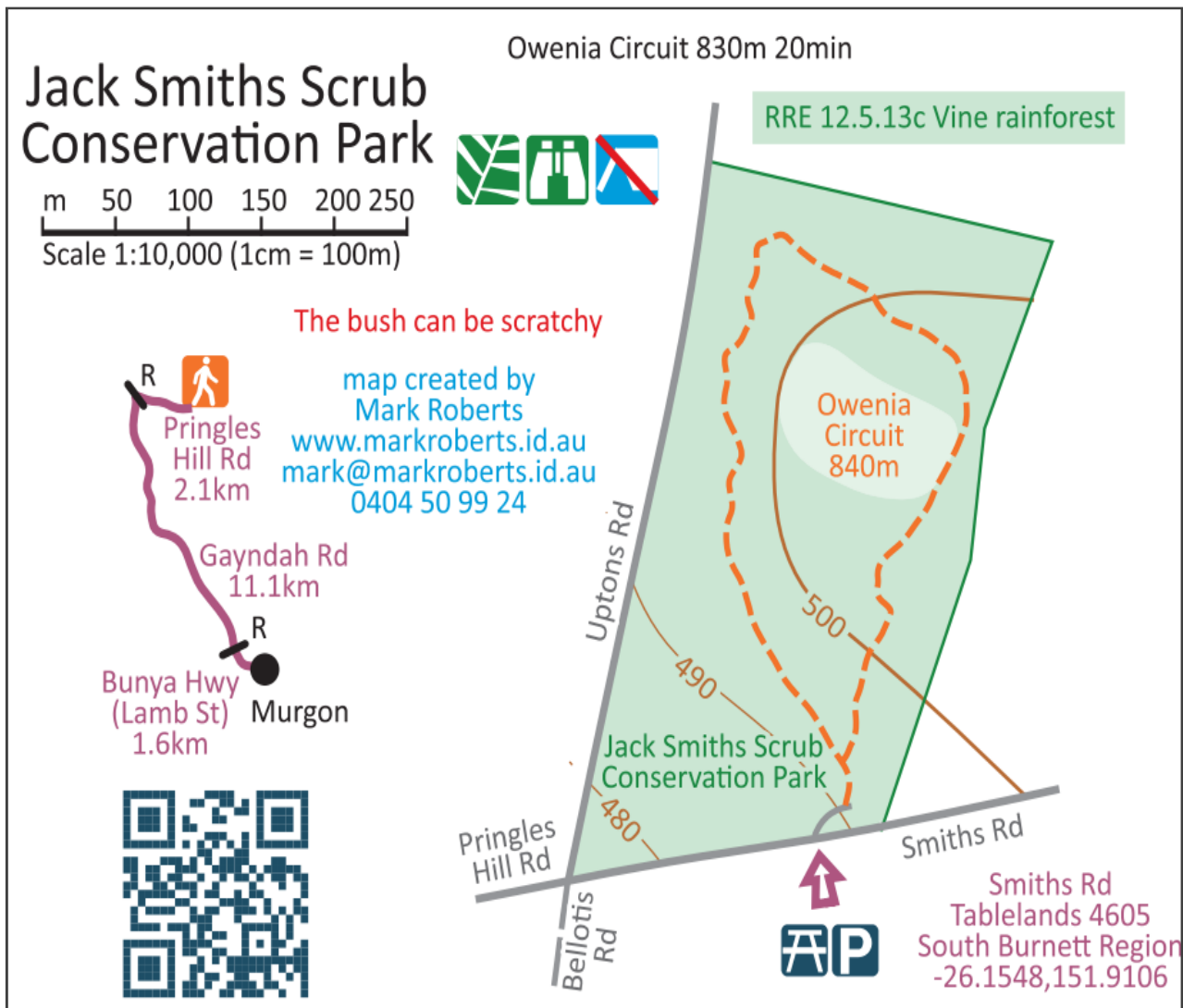


Jack Smith Scrub Regional Park

Murgon

Explore the park along a short circuit walk . Enjoy a picnic at the tables provided whilst taking in the views of the South Burnett

NOTE: The Owenia nature walk circuit is a 900m walk through the vine scrub. Protective clothing is advisable.

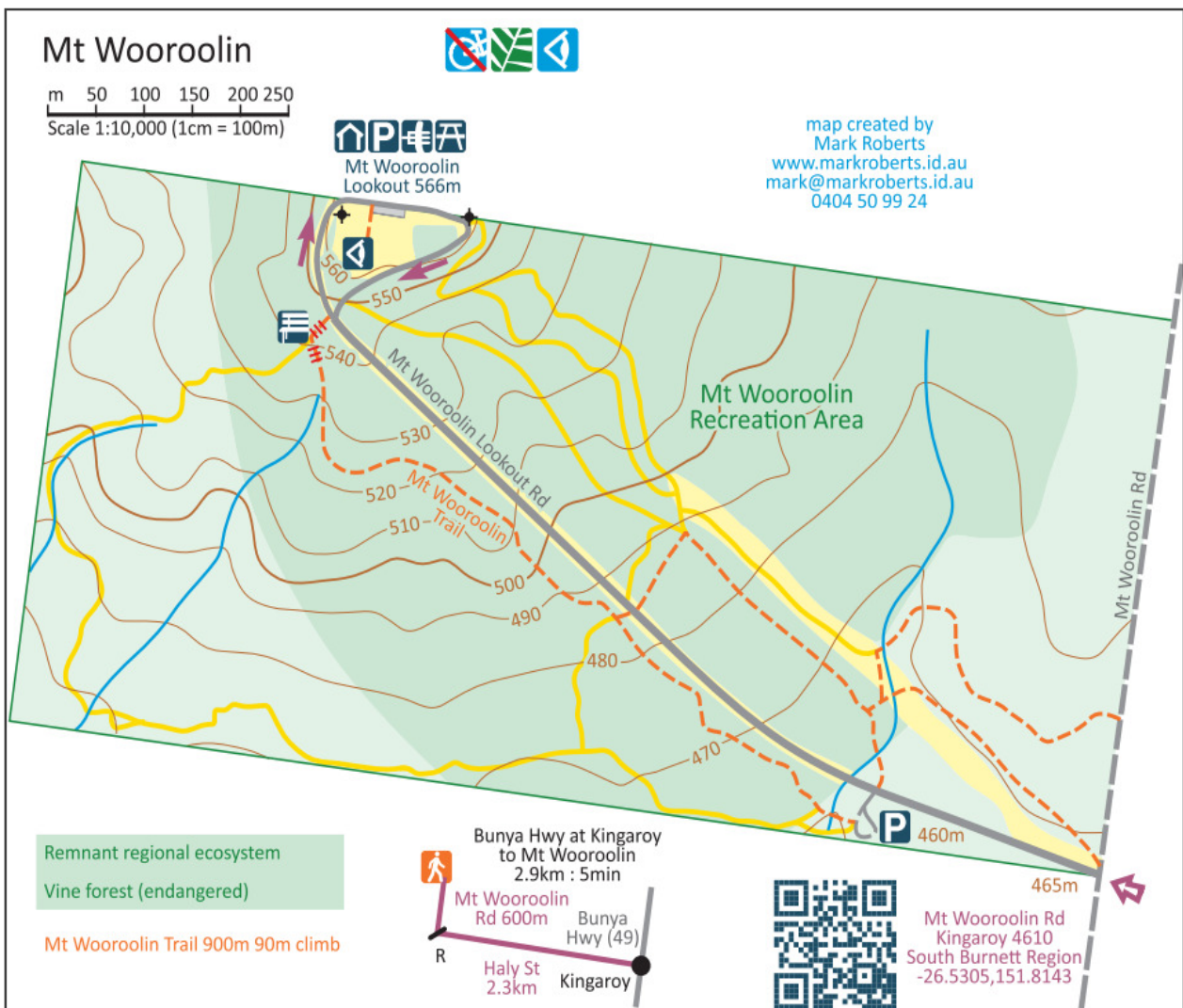


Mt Wooroolin

Kingaroy

Mt Wooroolin Lookout was developed by Kingaroy Shire Council in 1988 as a bicentennial project. The lookout is an elevated viewing platform that offers striking panoramic views across Kingaroy and the areas leading towards Kumbia and the Bunya Mountains in the east.

NOTE: Located 4km from the heart of Kingaroy, Mt Wooroolin has lots of walking tracks on offer. Some are quite steep so good shoes and lots of energy are required.

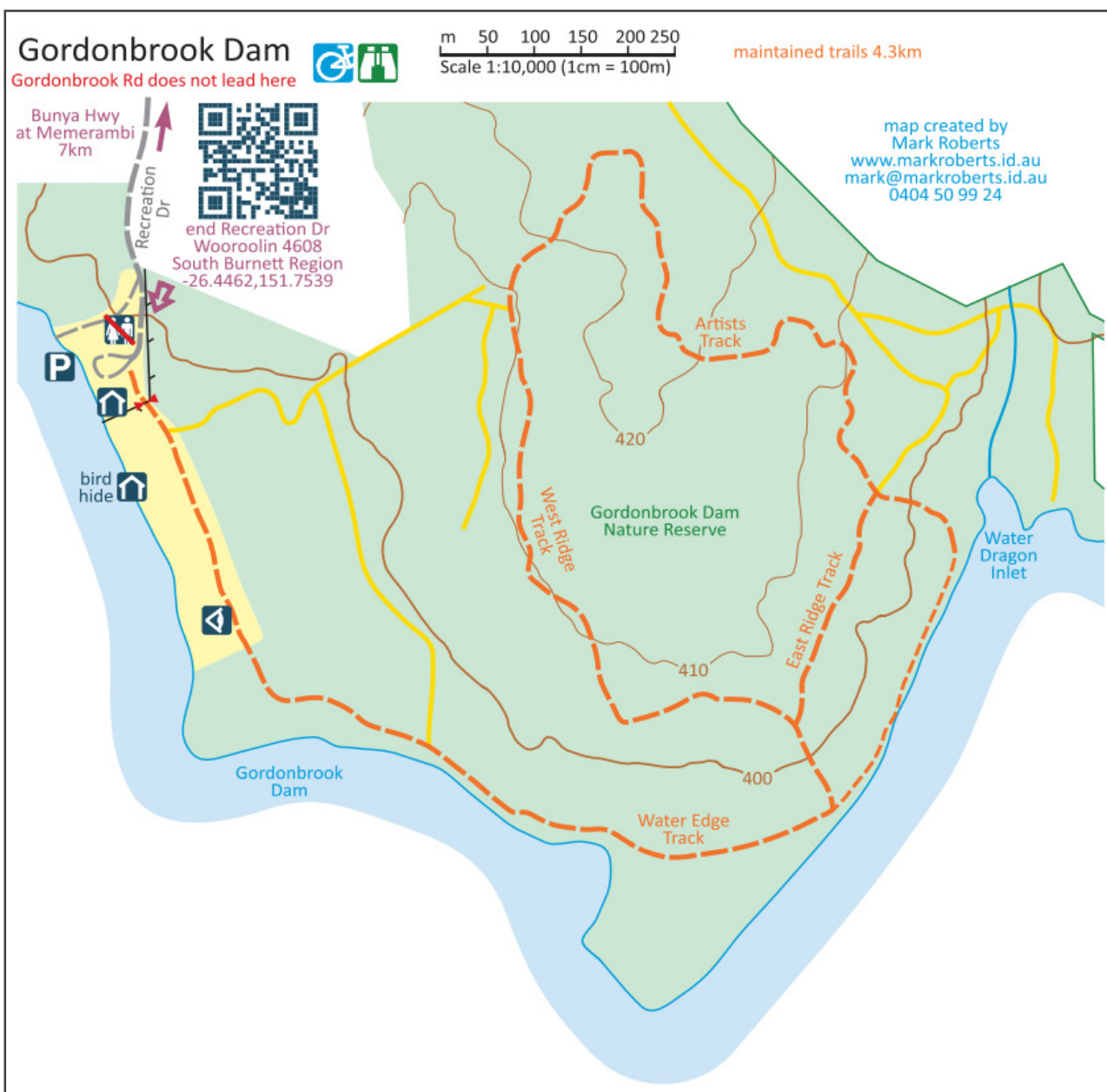


Gordonbrook Dam

Memerambi

Gordonbrook Dam is the sole source of water supply for Kingaroy; it was built in 1941 to provide water for the Royal Australian Air Force Training Base during WWII. The Dam is non-water recreational as in no boating, fishing or swimming, but is a perfect spot for picnics, walks and bird watching.

NOTE: Take time to enjoy the beautiful views of the dam from either the viewing platform or the variety of walking tracks along the water's edge.

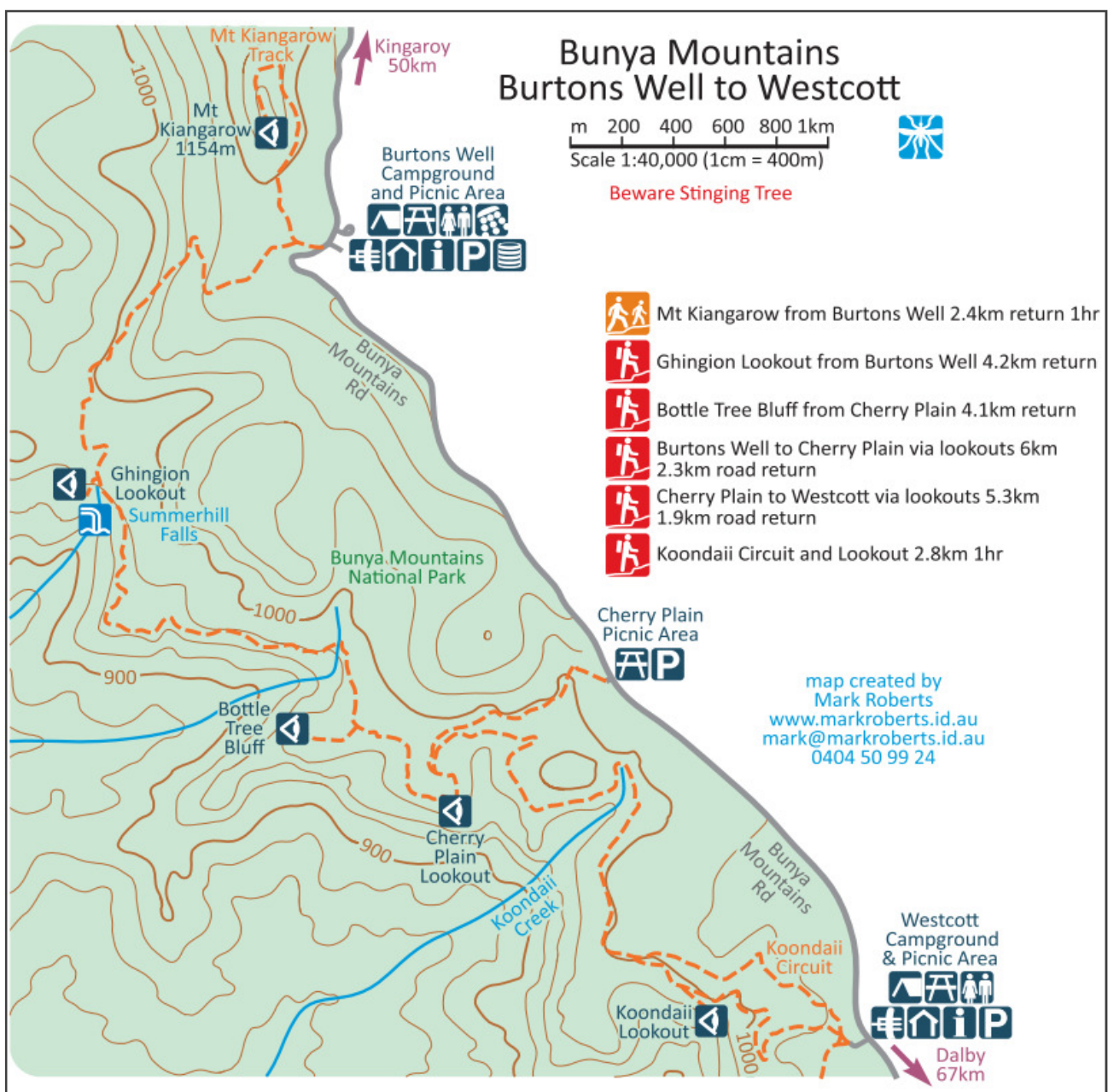


Burton Wells to Westcott

Bunya Mountains National Park

The Bunya Mountains National Park is approximately 58kms south west of Kingaroy. It's Queensland second oldest national park and features the world's largest stand of ancient bunya pines and more than 30 rare and threatened species. The Bunya Mountains offer visitors a number of different walking tracks, from a 500km stroll through to a 10km trek.

NOTE: The tracks take in some stunning views of the valley, taking in Cherry Plain lookout and Bottle Tree Bluff. During September/October keep an eye out for the bright yellow flowers of the King Orchids.

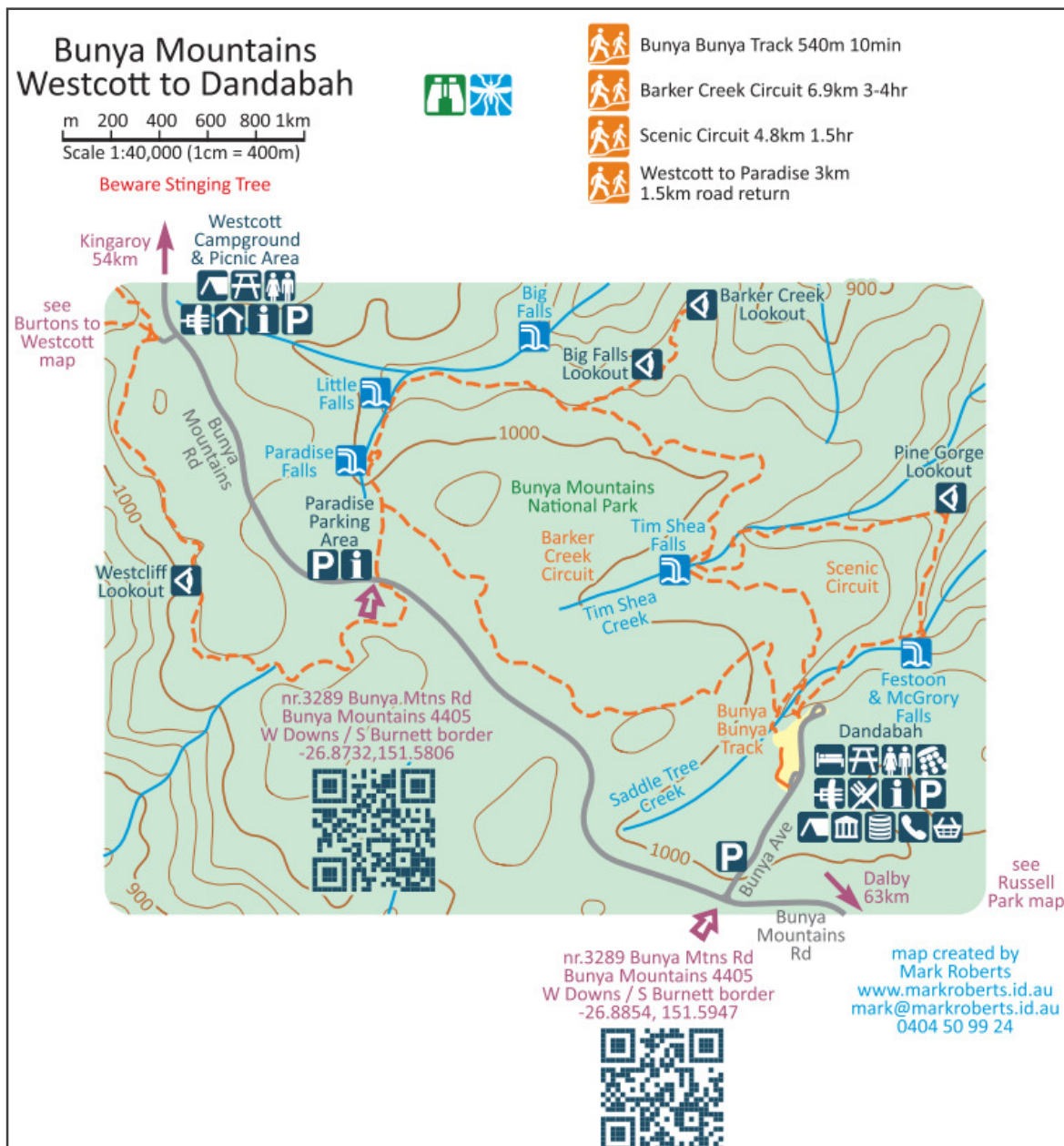


Westcott to Dandabah

Bunya Mountains National Park

The Bunya Mountains National Park is located 1100 metres above sea level with the giant Bunya pines towering over 60 metres high. Once the ceremonial place where Aboriginal tribes would come to meet, the Bunya Mountains offer spectacular sceneries of water falls, birdlife and panoramic views for visitors.

NOTE: The tracks take in a number of falls including; Big Falls, Little Falls, Paradise Falls and Tim Shea Falls, which are spectacular after heavy rains. These tracks take in part of the western side of the national park, showing views over the Darling Downs.



Russell Park

Bunya Mountains National Park

History has it that about 30 million years ago the Bunya Mountains formed as the remnant of an old shield volcano, which helped form the deep red-brown and black earths of the mountains today. The mountains are also home to the Bunya nut which falls from the Bunya pines every three years.

NOTE: These tracks are for the more experienced walker/hiker. There is also a section that is part of private land. Take in the breathtaking valley views from the north and east and keep an eye out for the Satin Bower birds.

