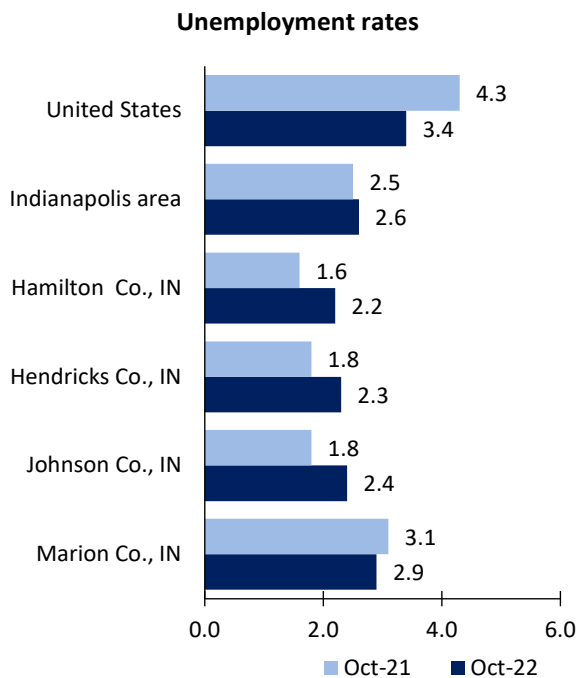


Indianapolis Area Economic Summary

Updated December 08, 2022

This summary presents a sampling of economic information for the area; supplemental data are provided for regions and the nation. Subjects include **unemployment, employment, wages, prices, spending, and benefits**. All data are not seasonally adjusted and some may be subject to revision. Area definitions may differ by subject. For more area summaries and geographic definitions, see www.bls.gov/regions/economic-summaries.htm.

Unemployment rates for the nation and selected areas

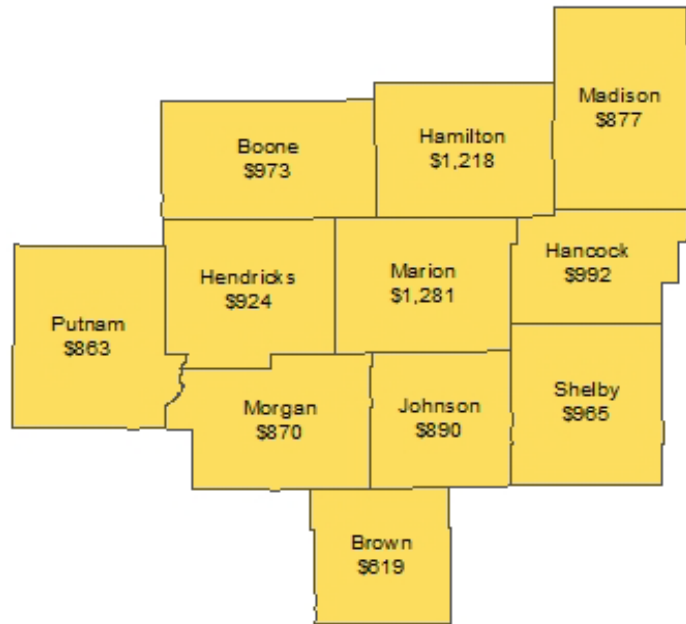


Source: U.S. BLS, Local Area Unemployment Statistics.

Average weekly wages for all industries by county

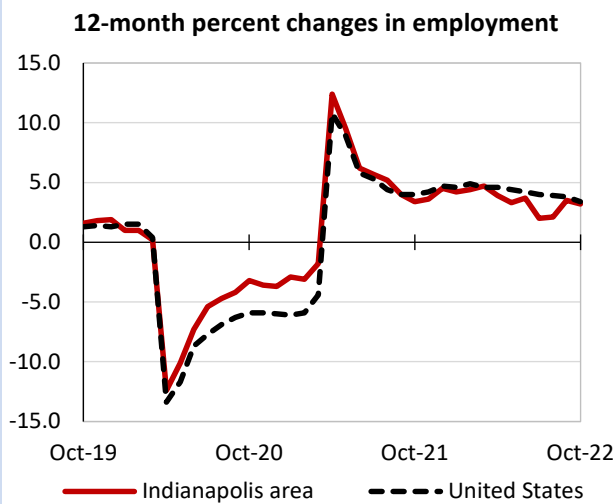
Indianapolis area, second quarter 2022

(U.S. = \$1,294; Area = \$1,170)



Source: U.S. BLS, Quarterly Census of Employment and Wages.

Over-the-year changes in employment on nonfarm payrolls and employment by major industry sector



Source: U.S. BLS, Current Employment Statistics.

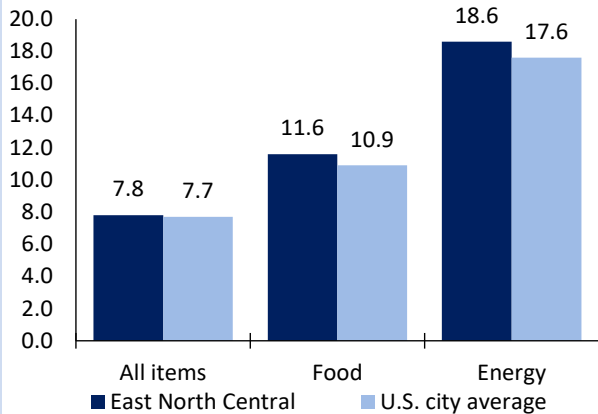
Indianapolis area employment (number in thousands)	Oct. 2022	Change from Oct. 2021 to Oct. 2022	
		Number	Percent
Total nonfarm	1,137.4	34.9	3.2
Mining and logging	0.8	0.0	0.0
Construction	65.5	7.2	12.3
Manufacturing	94.9	1.6	1.7
Trade, transportation, and utilities	247.3	10.0	4.2
Information	12.6	0.1	0.8
Financial activities	78.1	4.7	6.4
Professional and business services	186.6	4.2	2.3
Education and health services	167.1	2.4	1.5
Leisure and hospitality	104.0	3.3	3.3
Other services	41.6	-0.9	-2.1
Government	138.9	2.3	1.7

Source: U.S. BLS, Current Employment Statistics.



Over-the-year change in the prices paid by urban consumers for selected categories

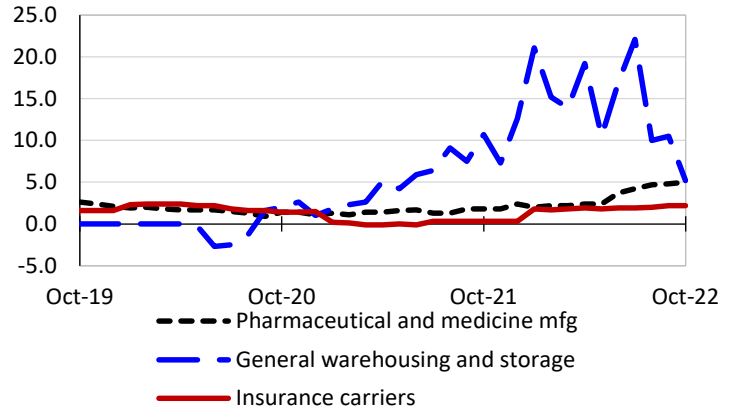
12-month percent change in CPI-U, October 2022



Source: U.S. BLS, Consumer Price Index.

Over-the-year changes in the selling prices received by producers for selected industries nationwide

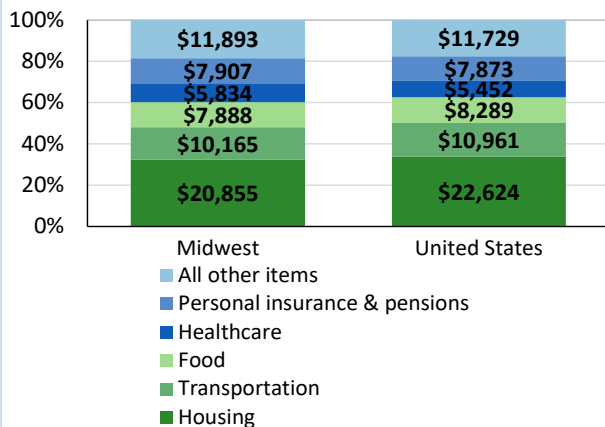
12-month percent changes in PPI



Source: U.S. BLS, Producer Price Index.

Average annual spending and percent distribution for selected categories

Average annual expenditures, United States and Midwest, 2021



Source: U.S. BLS, Consumer Expenditure Survey.

Average hourly wages for selected occupations

Occupation	Indianapolis area	United States
All occupations	\$26.01	\$28.01
Insurance sales agents	36.42	33.34
Respiratory therapists	29.88	32.78
Machinists	23.28	23.57
Bookkeeping, accounting, and auditing clerks	20.74	21.70
Laborers and freight, stock, and material movers, hand	16.83	16.80
Waiters and waitresses	12.25	13.95

Source: U.S. BLS, Occupational Employment and Wage Statistics, May 2021.

Employer costs per hour worked for wages and selected employee benefits by geographic division

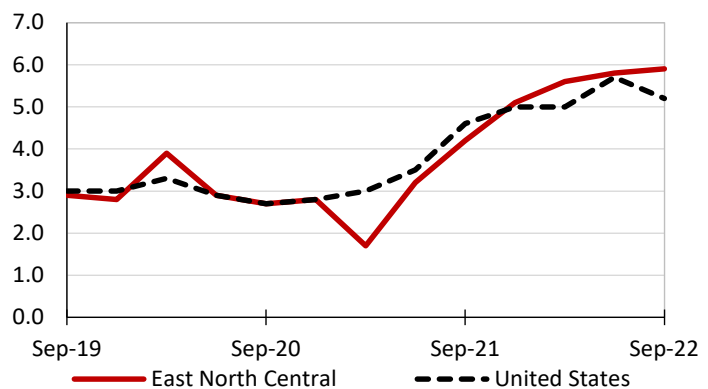
Private industry, June 2022	East North Central (1)	United States
Total compensation	\$38.22	\$38.91
Wages and salaries	26.45	27.44
Total benefits	11.78	11.47
Paid leave	2.72	2.87
Vacation	1.45	1.47
Supplemental pay	1.50	1.37
Insurance	3.24	2.96
Retirement and savings	1.51	1.33
Legally required benefits	2.80	2.93

(1) The states that compose the East North Central census division are: IL, IN, MI, OH, and WI.

Source: U.S. BLS, Employer Costs for Employee Compensation.

Over-the-year changes in wages and salaries

12-month percent changes in ECI



Source: U.S. BLS, Employment Cost Index.

