



2020 ELK POPULATION STATUS BY ELK ZONE



Elk populations fluctuate constantly in response to weather, predation, land management actions, fire events, invasive species, private land use, and development. To maintain elk hunting experiences desired by sportsmen, the Idaho Department of Fish and Game manages herds within desired ranges by adjusting hunting seasons and hunter numbers

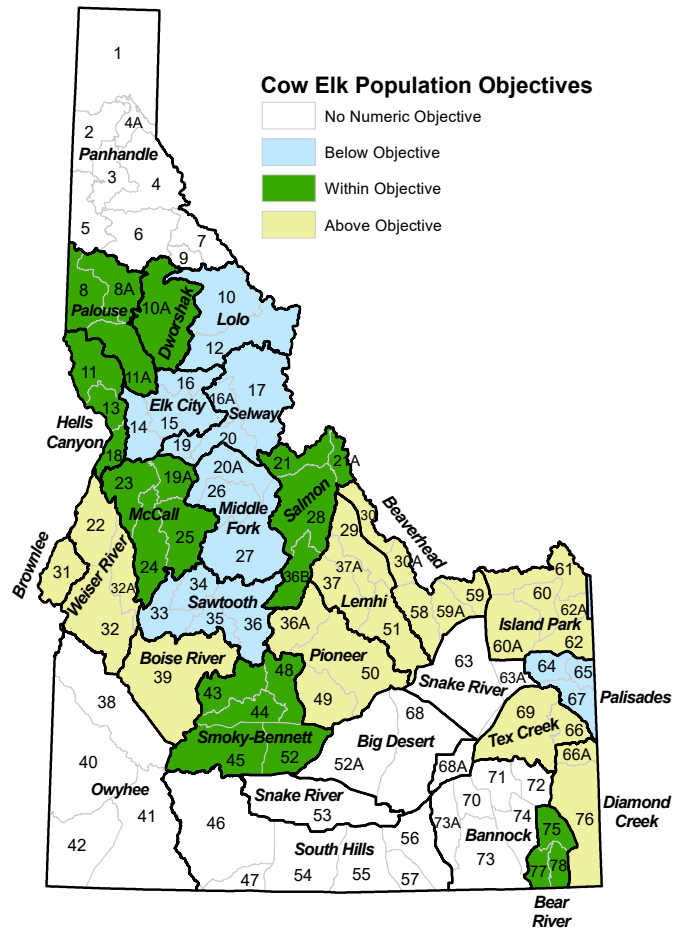
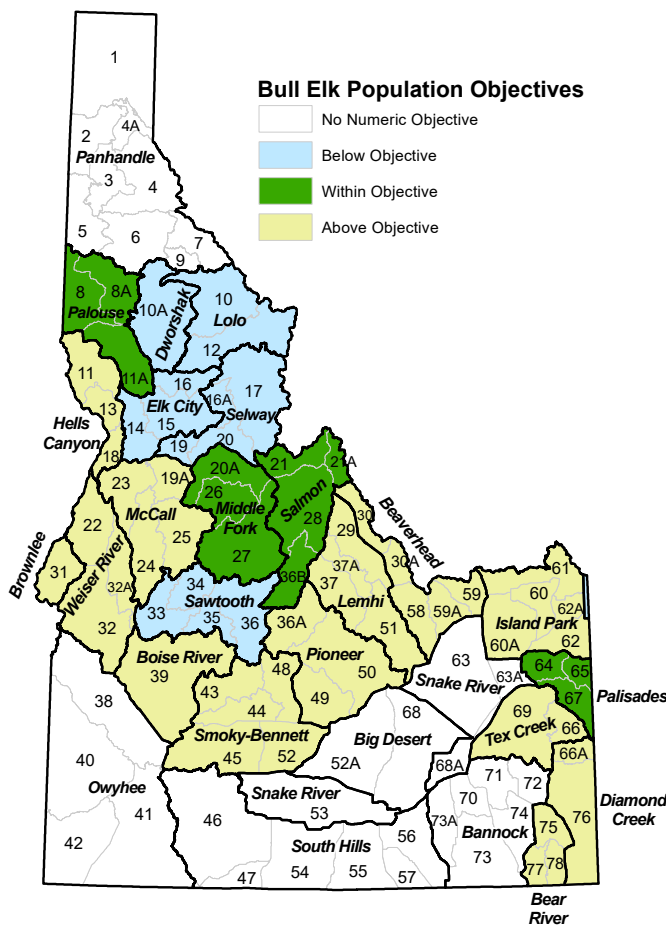
Elk herds currently are within or above management objectives in 16 of 22 elk management zones that have established numeric objectives for number of cow elk, and in 17 of 22 zones with set objectives for number of bull elk. Hunting opportunities in these zones range from trophy quality bull hunts to “extra” cow hunts. In zones currently below objectives, Fish and Game is working hard to improve elk survival and increase the populations by reducing or eliminating cow harvest, adjusting bull harvest, and intensively managing predators to reduce the impacts of predation on those herds.

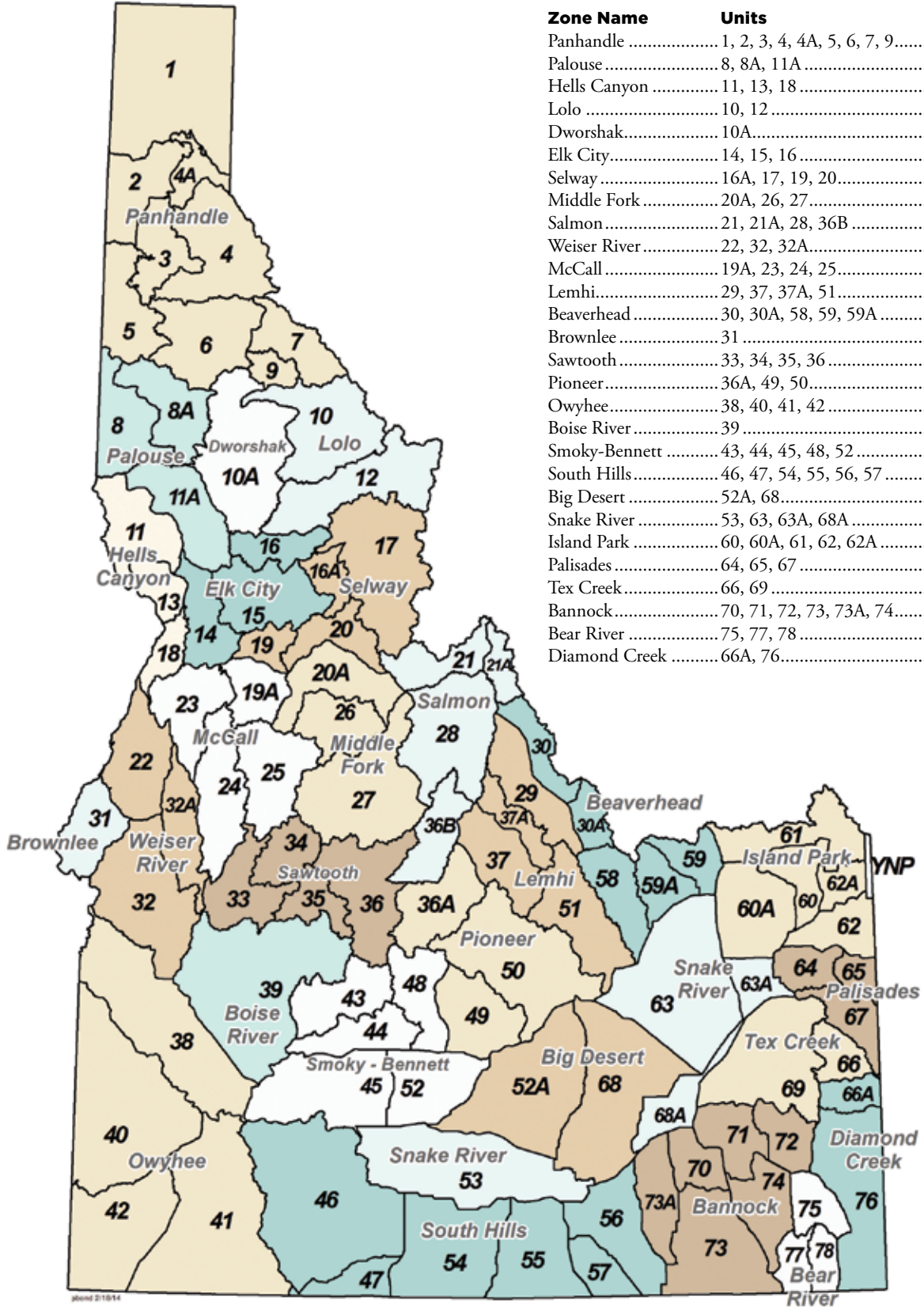
Changing conditions and management challenges have always been part of the landscape, but with responsive management and more than 120,000 elk, Idaho continues to provide an incredible variety of excellent elk hunting opportunities desired by sportsmen.

For additional information on elk management objectives and hunter success rates, please visit our website at: idfg.idaho.gov/hunt/elk.

to provide high quality hunting opportunities, maintain availability of general season hunts with over-the-counter tag sales, and minimize conflicts with agriculture. Fish and Game also works closely with land managers and private landowners to ensure the existence of high quality elk habitat throughout the state. In 2014 the boundaries of a few elk zones were modified to better match up with elk populations and their seasonal movements.

ELK





Zone Name	Units	Page Number
Panhandle	1, 2, 3, 4, 4A, 5, 6, 7, 9	37
Palouse	8, 8A, 11A	37
Hells Canyon	11, 13, 18	38
Lolo	10, 12	38
Dworshak	10A	38
Elk City	14, 15, 16	39
Selway	16A, 17, 19, 20	39
Middle Fork	20A, 26, 27	40
Salmon	21, 21A, 28, 36B	40
Weiser River	22, 32, 32A	41
McCall	19A, 23, 24, 25	42
Lemhi	29, 37, 37A, 51	42
Beaverhead	30, 30A, 58, 59, 59A	43
Brownlee	31	43
Sawtooth	33, 34, 35, 36	44
Pioneer	36A, 49, 50	44
Owyhee	38, 40, 41, 42	45
Boise River	39	45
Smoky-Bennett	43, 44, 45, 48, 52	45
South Hills	46, 47, 54, 55, 56, 57	46
Big Desert	52A, 68	46
Snake River	53, 63, 63A, 68A	47
Island Park	60, 60A, 61, 62, 62A	47
Palisades	64, 65, 67	47
Tex Creek	66, 69	48
Bannock	70, 71, 72, 73, 73A, 74	48
Bear River	75, 77, 78	48
Diamond Creek	66A, 76	49

ELK



2021 ELK HUNTING SEASONS

Elk hunting is managed in 28 elk zones. Idaho has a two-tag system to offer elk hunters the most general season choices. Hunters may select one zone and choose either an "A tag" or a "B tag" for that zone. Some zones offer only an A tag. In general, A tags provide more opportunity for muzzleloader and archery hunters, and B tags provide more opportunity for centerfire rifle hunters.

Controlled hunts, allocated by random drawing, are also available in most of the state. Any person who receives a controlled hunt tag for elk is prohibited from hunting in any other elk hunt, **except** for depredation hunts, extra antlerless elk hunts or by buying a leftover nonresident elk tag, if available.

Unsold Nonresident Tags: Residents and nonresidents may buy one unsold nonresident general season deer and/or elk tag at the nonresident price, starting August 1, to be used as a second tag **except** second deer tags cannot be used in Units 10, 10A, 12, 16A, 17, 19 and 20. Second elk tags are not available for the Elk City Zone.

Antlered elk: Only elk with at least one antler longer than 6 inches may be taken in any season which is open for antlered elk only. In antlered seasons, including spike-only, antlers must accompany the carcass while in transit.

Antlerless elk: Only elk without antlers or with antlers shorter than 6 inches may be taken in any season which is open for antlerless elk only.

Spike elk: Only elk with no branching on either antler and at least one antler longer than 6 inches may be taken in any season which is open for spike elk only. A branch is an antler projection at least 1 inch long and longer than the width of the projection.

Brow-tined elk: Only elk having at least one antler with a visible point on the lower half of the main beam which is 4 inches or greater in length may be taken in any season open for brow-tined elk only.

Archery & Muzzleloader Permits

Any person hunting in an "archery only" season, including controlled hunts, must have their license with archery permit validation. Any person hunting in a "muzzleloader only" season, including controlled hunts, must have their license with muzzleloader permit validation.

Youth Only Hunt: Some elk hunts are for youth only. See page 111 for more information.

Junior Resident General Elk Tag

Junior resident elk hunters who purchase a general season elk zone tag while they are between ages 10 and 17, inclusive, may participate in any A or B tag elk season within the specified zone, regardless of whether they purchased an A tag or B tag. All other season, weapon restrictions, and commission rules apply. Controlled hunts are excluded.

Nonresident Deer and Elk Tags

A nonresident deer and elk tag, **excluding** a nonresident junior mentored tag, issued for deer or elk may be used to take a black bear, mountain lion or gray wolf, during any open general season corresponding to the deer or elk tag when the season for the animal taken is also open. See page 112.

Chronic Wasting Disease: See page 8 for more information.



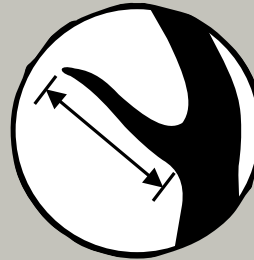
Legal in spike elk hunts SPIKE ELK

One antler must be at least 6 inches or longer. (Not legal in brow-tined elk hunts.)



Not legal in spike elk hunts or brow-tined elk hunts BRANCH ANTLERED BULL (or larger)

Not legal for spike-only hunts if branched point is longer than 1 inch.



Antler branch is a projection 1 inch or more in length.



Legal in brow-tined elk hunts

Caution - Archers and Muzzleloaders:

"Any weapon" hunts will be open during the archery or muzzleloader season in all or parts of the following zones: Panhandle, Palouse, Salmon, Weiser River, McCall, Lemhi, Beaverhead, Brownlee, Pioneer, Boise River, Smoky-Bennett and South Hills. **Please use appropriate caution.**

Panhandle Zone (Units 1, 2, 3, 4, 4A, 5, 6, 7, 9)			
	September	October	November
	Archery only — antlered only Aug 30- Sep 30 See archers caution Page 36	Any weapon — antlered only Oct 25 - Oct 29	Muzzleloader only — antlered only Units 4, 7 & 9 only Nov 15 - Dec 1
A Tag	Archery only — any elk Within 1 mile of private land in the following Units: 1, 2, 3, 4, 4A, 5 & 6 only See Notes A & B below Sep 15 - Sep 21 See archers caution Page 36		Archery only — antlered only Dec 10 - Dec 16
B Tag	Archery only — antlered only Sep 6 - Sep 12 See archers caution Page 36	Any weapon — antlered only Oct 10 - Oct 24 Any weapon — any elk Within 1 mile of private land in the following Units: 1, 2, 3, 4, 4A, 5 & 6 only See Notes A & B below Oct 15 - Oct 17	Muzzleloader only — antlerless only Within 1 mile of private land in the following Units: 1, 2, 3, 4A & 5 only See Note B below Dec 2 - Dec 8
Note A	That portion of Unit 4 within the following boundary: starting at the junction of State Highway 97 and State Highway 3 near Harrison, then north on State Highway 3 to Interstate 90, then East on Interstate 90 to Kingston, then north and east on Forest Service Road 9 (CDA River Road) to the Montana border, and then follow the Unit 4 boundary south and west to the point of beginning.		
Note B	That portion of Unit 4A within the following boundary: starting at the mouth of the Clark Fork River, follow Johnson Creek FS Road 278, then south on FS Road 1066, then east on FS Road 332 to the Montana border, and follow Montana border north back to the Clark Fork River, then to the point of beginning.		
Palouse Zone (Units 8, 8A, 11A)			
	August/September	October	November
	Any weapon — antlerless only On or within 1 mile of private agricultural lands, See Note 1, Page 49 Aug 1 - Sep 15 Archery only — any elk Aug 30 - Sep 30 See archers caution Page 36		Muzzleloader only — spike or antlerless: Dec 2 - Dec 5 spike only: Dec 6 - Dec 14
A Tag			
B Tag	Archery only — spike or antlerless Aug 30 - Sep 14 See archers caution Page 36	Any weapon — antlered only Oct 10 - Oct 24	

Hells Canyon Zone (Units 11, 13, 18) — Controlled Hunts Only

A Tag	No A Tags in this Zone — See Controlled Hunts			
B Tag	No B Tags in this Zone — See Controlled Hunts			

Lolo Zone (Units 10, 12)

	August/September	October	November	December
A Tag	<p>Archery only — antlered only Aug 30 - Sep 30</p> <p>Note: 404 A Tag Quota Available First-Come, First-Served.</p>			<p>2021 Capped tags go on sale for Residents 7/12/2021 and Nonresidents 12/1/2020 Residents - If you apply for a controlled elk hunt there is a 5 day waiting period to purchase capped general elk tags, see page 2 for details.</p>
B Tag		<p>Any weapon — antlered only Oct 10 - Nov 3</p>		<p>2021 Capped tags go on sale for Residents 7/12/2021 and Nonresidents 12/1/2020 Residents - If you apply for a controlled elk hunt there is a 5 day waiting period to purchase capped general elk tags, see page 2 for details.</p>

Dworshak Zone (Unit 10A)

	August/September	October	November	December
A Tag	<p>Archery only — any elk Aug 30 - Sep 30</p>			<p>Muzzleloader only — spike or antlerless: Dec 2 - Dec 5 spike only: Dec 6 - Dec 14</p>
B Tag	<p>Archery only — spike or antlerless Aug 30 - Sep 14</p> <p>Note: 2,380 B Tag Quota Available First-Come, First-Served.</p>	<p>Any weapon — antlered only Oct 10 - Nov 3</p>		<p>2021 Capped tags go on sale for Residents 7/12/2021 and Nonresidents 12/1/2020 Residents - If you apply for a controlled elk hunt there is a 5 day waiting period to purchase capped general elk tags, see page 2 for details.</p>

Elk City Zone (Units 14, 15, 16)			
	August/September	October	November
A Tag	Archery only — any elk Unit 15 only Aug 30 - Sep 30		Muzzleloader only — spike or antlerless Units 14 & 16 only: Nov 21 - Nov 24 Muzzleloader only — spike only Units 14 & 16 only: Nov 25 - Dec 9
	Note: 628 A Tag Quota Available First-Come, First-Served. Second RES-NONRES elk tags are not available.		2021 Capped tags go on sale for Residents 7/12/2021 and Nonresidents 12/1/2020 Residents - If you apply for a controlled elk hunt there is a 5 day waiting period to purchase capped general elk tags, see page 2 for details.
B Tag		Any weapon — antlered only Oct 10 - Oct 24	2021 Capped tags go on sale for Residents 7/12/2021 and Nonresidents 12/1/2020 Residents - If you apply for a controlled elk hunt there is a 5 day waiting period to purchase capped general elk tags, see page 2 for details.

Selway Zone (Units 16A, 17, 19, 20)			
	September	October	November
A Tag		Any weapon — antlered only Oct 1 - Oct 31	2021 Capped tags go on sale for Residents 7/12/2021 and Nonresidents 12/1/2020 Residents - If you apply for a controlled elk hunt there is a 5 day waiting period to purchase capped general elk tags, see page 2 for details.
B Tag	Any weapon — antlered only Sep 15 - Sep 30		Any weapon — antlered only Nov 1 - Nov 11
	Note: 1,067 B Tag Quota Available First-Come, First-Served.		2021 Capped tags go on sale for Residents 7/12/2021 and Nonresidents 12/1/2020 Residents - If you apply for a controlled elk hunt there is a 5 day waiting period to purchase capped general elk tags, see page 2 for details.



Middle Fork Zone (Units 20A, 26, 27)

	September	October	November	December
A Tag		<p>Any weapon — Units 20A & 26: antlered only Unit 27: brow-tined bulls only Oct 1 - Oct 31</p>		
	<p>Note: 1,551 A Tag Quota Available First-Come, First-Served.</p>			
B Tag	<p>Any weapon — Units 20A & 26: antlered only Unit 27: brow-tined bulls only Sep 15 - Sep 30</p>		<p>Any weapon — Units 20A & 26: antlered only Unit 27: brow-tined bulls only Nov 1 - Nov 18</p>	
	<p>Note: 1,636 B Tag Quota Available First-Come, First-Served.</p>			
	<p>2021 Capped tags go on sale for Residents 7/12/2021 and Nonresidents 12/1/2020 Residents - If you apply for a controlled elk hunt there is a 5 day waiting period to purchase capped general elk tags, see page 2 for details.</p>			
	<p>2021 Capped tags go on sale for Residents 7/12/2021 and Nonresidents 12/1/2020 Residents - If you apply for a controlled elk hunt there is a 5 day waiting period to purchase capped general elk tags, see page 2 for details.</p>			

Salmon Zone (Units 21, 21A, 28, 36B)

	August/September	October	November	December
A Tag	<p>Any weapon — antlerless only Portions of Units 28 & 36B only, Aug 1 - Oct 31</p> <p>On or within 1 mile of private irrigated agricultural lands, in that portion of Unit 28 upstream of and including the Bird Creek Drainage and on or within 1 mile of private irrigated agricultural lands in all of Unit 36B, excluding the Morgan Creek drainage. See Note A below, See Note 2, Page 49, <i>Very limited Access, Contact the Salmon Regional Office for map of Hunt Area</i></p>			<p>Archery only — any elk Unit 28 only Dec 1 - Dec 31</p>
	<p>Archery only — any elk Units 21, 21A & 36B only Aug 30 - Sep 30 See archers caution Page 36</p>			
B Tag			<p>Any weapon — antlered only Oct 15 - Nov 8</p>	
	<p>Note: 2,507 B Tag Quota Available First-Come, First-Served.</p>			
Note A	<p>Excludes portions of Unit 28 & 36B: excludes all drainages in Unit 28 downstream (north and west of), the Bird Creek Drainage. Excludes the Morgan Creek drainage in Unit 36B.</p>			

Weiser River Zone (Units 22, 32, 32A)				
Motorized Hunting Rule Applies in Units 32 & 32A, August 30 - December 31, See Pages 104 - 106				
	August/September	October	November	
A Tag	<p>Short range weapons only — antlerless only Units 22 & 32A only: Aug 15 - Sep 30 Outside National Forest System Boundary only, See Note A below</p> <p>Archery only — any elk Aug 30 - Sep 30 See archers caution Page 36</p>	<p>Youth Hunt only Any weapon — antlerless only Oct 1 - Oct 9 Short range weapons only on Payette River and Montour WMAs</p> <p>Any weapon — antlerless only Oct 10 - Oct 16 Short range weapons only on Payette River and Montour WMAs</p> <p>Any weapon — antlered only Oct 25 - Nov 3 Short range weapons only on Payette River and Montour WMAs</p>	<p>Any weapon — antlerless only Nov 4 - Nov 18 All of Unit 32 and those portions of Units 22 and 32A outside National Forest System Boundary, See Note A below, Short range weapons only on Payette River and Montour WMAs</p>	December
B Tag	<p>Note: 4,000 B Tag Quota Available First-Come, First-Served.</p>			<p>2021 Capped tags go on sale for Residents 7/12/2021 and Nonresidents 12/1/2020 Residents - If you apply for a controlled elk hunt there is a 5 day waiting period to purchase capped general elk tags, see page 2 for details.</p>
Note A	<p>You may hunt only outside the National Forest System Boundary. The National Forest System Boundary is a legislatively set boundary - it is not necessarily the boundary of Forest Service property. State, private, and other lands within the National Forest System Boundary are not open to hunting during this season. (Please refer to a U.S. Forest Service map for the location of this boundary.)</p>			

McCall Zone (Units 19A, 23, 24, 25)

	August/September	October	November	December
A Tag	<p>Short range weapons only — antlerless only Units 23 & 24 only Outside National Forest System Boundary only. See Note A below Aug 15 - Sep 30 <i>Extremely limited access because of private property</i></p>	<p>Any weapon — spike only Short range weapons only within described boundaries in Unit 24, See Note B below Oct 5 - Oct 14</p>	<p>Short range weapons only — antlerless only Units 23 & 24 only Nov 10 - Nov 30</p>	
	<p>Archery only — any elk Aug 30 - Sep 30 See archers caution Page 36</p>			
B Tag		<p>Any weapon — antlered only Oct 15 - Nov 3</p>		
Note A	<p>You may hunt only outside the National Forest System Boundary. The National Forest System Boundary is a legislatively set boundary - it is not necessarily the boundary of Forest Service property. State, private, and other lands within the National Forest System Boundary are not open to hunting during this season. (Please refer to a U.S. Forest Service map for the location of this boundary.)</p>			
Note B	<p>Short range weapons only in that portion of Unit 24 within the following boundary: Beginning in McCall at the junction of State Highway 55 and Boydston Street, then south on Boydston Street to West Valley Road, then west and south along West Valley Road and West Mountain Road to Cabarton Road, then north on Cabarton Road to State Highway 55, then north on State Highway 55 to Farm-To-Market Road, then north on Farm-To-Market Road to Elo Road, then west on Elo Road to State Highway 55, then north on State Highway 55 to the point of beginning.</p>			

Lemhi Zone (Units 29, 37, 37A, 51)

	August/September	October	November	December
	<p>Motorized Hunting Rule Applies, August 30 - December 31, See Pages 104 - 106</p>			
A Tag	<p>Any weapon — antlerless only Unit 51 only: Aug 1 - Aug 29 On or within 1 mile of private agricultural lands outside the National Forest System Boundary, See Note 3, Page 49</p>	<p>Any weapon — antlerless only Units 29, 37 & 37A only: Aug 1 - Oct 31</p>	<p>On or within 1 mile of private irrigated agricultural lands, See Note 2, Page 49</p>	<p>Muzzleloader only — antlerless only Nov 25 - Dec 9</p>
	<p>Archery only — any elk Aug 30 - Sep 30 See archers caution Page 36</p>			
B Tag	<p>No B Tags in this Zone — See Controlled Hunts</p>			

Beaverhead Zone (Units 30, 30A, 58, 59, 59A)

Motorized Hunting Rule Applies, August 30 - December 31, See Pages 104 - 106

	August/September	October	November	December
A Tag	<p>Any weapon — antlerless only Units 58, 59 & 59A only: Aug 1 - Aug 29 On or within 1 mile of private agricultural lands outside the National Forest System Boundary, See Note 3, Page 49</p> <p>Archery only — any elk Aug 30 - Sep 30 See archers caution Page 36</p>	<p>Muzzleloader only — antlerless only Oct 15 - Oct 31</p>		
B Tag	<p>Any weapon — antlerless only Unit 30 only: Aug 1 - Oct 31 On or within 1 mile of private irrigated agricultural lands, See Note 2, Page 49</p>			
No B Tags in this Zone — See Controlled Hunts				

Brownlee Zone (Unit 31)				
	August/September	October	November	December
A Tag	<p>Archery only — any elk Aug 30 - Sep 30 See archers caution Page 36</p> <p>Short range weapons only — antlerless only, Aug 15 - Sep 30 On or within 1 mile of private agricultural lands outside the National Forest System Boundary, See Note 3, Page 49</p>			
B Tag	No B Tags in this Zone — See Controlled Hunts			

Sawtooth Zone (Units 33, 34, 35, 36)

	August/September	October	November	December
A Tag	<p>Archery only — any elk Aug 30 - Sep 30</p> <p>Note: 1,000 A Tag Quota Available First-Come, First-Served. Resident capped tag sales will be sold separately at vendors and online. See Note A below</p>		<p>2021 Capped tags go on sale for Residents 7/14/2021 and Nonresidents 12/1/2020 Residents - If you apply for a controlled elk hunt there is a 5 day waiting period to purchase capped general elk tags, see page 2 for details.</p>	
B Tag		<p>Any weapon — antlered only Oct 15 - Nov 8</p>	<p>2021 Capped tags go on sale for Residents 7/14/2021 and Nonresidents 12/1/2020 Residents - If you apply for a controlled elk hunt there is a 5 day waiting period to purchase capped general elk tags, see page 2 for details.</p>	
Note	<p>Resident Sawtooth Zone A and B tags will be sold separately from other resident tag sales, <i>two days after other resident tags</i>. On 7/14/2021 half of the tags will be sold at license vendors only starting at 10 A.M. MT. The remaining half of the resident tags will be sold online only starting at 1 P.M. MT.</p>			

Pioneer Zone (Units 36A, 49, 50)

Motorized Hunting Rule Applies, August 30 - December 31, See Pages 104 - 106

	August/September	October	November	December
A Tag	<p>Any weapon — antlerless only Unit 50 only: Aug 1 - Aug 29 On or within 1 mile of private agricultural lands outside the National Forest System Boundary, See Note 3, Page 49</p> <p>Archery only — any elk Aug 30 - Sep 30 See archers caution Page 36</p>		<p>Muzzleloader only — antlerless only Nov 1 - Nov 14</p>	
B Tag	<p>Any weapon — antlerless only Unit 36A only: Aug 1 - Oct 31 On or within 1 mile of private irrigated agricultural lands, See Note 2, Page 49</p>		<p>Any weapon — antlerless only Nov 15 - Dec 15</p>	<p>2021 Capped tags go on sale for Residents 7/12/2021 and Nonresidents 12/1/2020 Residents - If you apply for a controlled elk hunt there is a 5 day waiting period to purchase capped general elk tags, see page 2 for details.</p>

Owyhee Zone (Units 38, 40, 41, 42) — Controlled Hunts Only			
	August/September	October	November
A Tag	No A Tags in this Zone — See Controlled Hunts		
B Tag	No B Tags in this Zone — See Controlled Hunts		

Boise River Zone (Unit 39)			
	September	October	November
A Tag			Archery only — any elk Nov 10 - Nov 30 See Note A below, See archers caution Page 36
B Tag			Any weapon — antlerless only Nov 1 - Nov 9 Portion of Unit closed, See Note B below
Note A	Unit 39 Archery Hunt CLOSED Area: That portion of Unit 39 within Ada County, and that portion of Unit 39 within the following boundary: Beginning at the intersection of State Highway 21 and the Middle Fork Boise River Road (Forest Road 268), east on Forest Road 268 to Cottonwood Creek-Thorn Creek Road (Forest Road 377), to South Fork of Thorn Creek to confluence of Thorn Creek, north and west on Thorn Creek to the confluence with Mores Creek, south and west along the center of Mores Creek including the Mores Creek arm of Lucky Peak Reservoir to Highway 21 to the point of beginning is closed.		
Note B	Portion of Unit 39 closed: That portion of Unit 39 south and east of Blacks Creek Road and south of the South Fork of Boise River is closed.		

Smoky-Bennett Zone (Units 43, 44, 45, 48, 52)			
Motorized Hunting Rule Applies in Units 45 & 52, August 30 - December 31, See Pages 104 - 106			
	August/September	October	November
A Tag	Archery only — any elk Units 43 & 48 only: Aug 30 - Sep 30 See archers caution Page 36		
B Tag	Note: 700 B Tag Quota Available First-Come, First-Served.		Any weapon — antlerless only Units 44, 45 & 52 only Nov 10 - Nov 30
2021 Capped tags go on sale for Residents 7/12/2021 and Nonresidents 12/1/2020 Residents - If you apply for a controlled elk hunt there is a 5 day waiting period to purchase capped general elk tags; see page 2 for details.			

South Hills Zone (Units 46, 47, 54, 55, 56, 57)			
Motorized Hunting Rule Applies in Units 47 & 56, August 30 - December 31, See Pages 104 - 106			
	August/September	October	November
A Tag	<p>Archery only — any elk Units 55, 56 & 57 only Aug 30 - Sep 30 See archers caution Page 36</p>		
B Tag	<p>Any weapon — any elk Unit 46 only: Aug 1 – Nov 30 On or within 1 mile of private irrigated agricultural lands, See Note 2, Page 49</p>		
No B Tags in this Zone — See Controlled Hunts			

Big Desert Zone (Units 52A, 68)			
Motorized Hunting Rule Applies in Unit 52A, August 30 - December 31, See Pages 104 - 106			
	August/September	October	November
A Tag	<p>Archery only — any elk Aug 30 - Sep 30</p> <p>Archery only — any elk Unit 68 only: Aug 1 - Aug 30 On or within 1 mile of private irrigated agricultural lands, See Note 2, Page 49</p>		
B Tag	<p>Any weapon — antlerless only Nov 1 - Nov 30</p> <p>2021 Capped tags go on sale for Residents 7/12/2021 and Nonresidents 12/1/2020 Residents - if you apply for a controlled elk hunt there is a 5 day waiting period to purchase capped general elk tags, see page 2 for details.</p>		

Snake River Zone (Units 53, 63, 63A, 68A)			
Motorized Hunting Rule Applies in Unit 53, August 30 - December 31, See Pages 104 - 106			
	August/September	October	November
	Short range weapons only — any elk Unit 63A only: Aug 1 - Aug 31	Short range weapons only — antlerless only Unit 63A only: Sep 1 - Nov 30	December
A Tag	Archery only — any elk Unit 68A only: Aug 1 - Sep 30	Archery only — antlerless only Unit 68A only: Oct 1 - Dec 31	
	Short range weapons only — any elk Unit 53 only: Aug 1 - Dec 31		
B Tag	No B Tags in this Zone — See Controlled Hunts		

Island Park Zone (Units 60, 60A, 61, 62, 62A)			
	August/September	October	November
A Tag	Archery only — any elk Aug 30 - Sep 30		Muzzleloader only — spike or antlerless Unit 61 only Nov 11 - Dec 9
B Tag	No B Tags in this Zone — See Controlled Hunts		

Palisades Zone (Units 64, 65, 67)			
	August/September	October	November
A Tag	Archery only — any elk Aug 30 - Sep 30		
B Tag		Any weapon — antlered only Oct 15 - Oct 21	

Tex Creek Zone (Units 66, 69)

Motorized Hunting Rule Applies, August 30 - December 31, See Pages 104 - 106

	August/September	October	November	December
A Tag	Archery only — any elk Aug 30 - Sep 30	Any weapon — antlerless only Oct 22 - Oct 31		
B Tag	Archery only — spike or antlerless Aug 30 - Sep 14	Any weapon — antlered only Oct 15 - Oct 21		

Bannock Zone (Units 70, 71, 72, 73, 73A, 74)

Motorized Hunting Rule Applies in Units 70, 72 & 73, August 30 - December 31, See Pages 104 - 106

	August/September	October	November	December
A Tag	Archery only — any elk Aug 30 - Sep 30	Any weapon — antlerless only Oct 25 - Nov 15	Any weapon — antlerless only Portion of Unit 74 only: Nov 16 - Dec 31 See Note A below	Muzzleloader only — antlerless only Dec 1 - Dec 31
B Tag	No B Tags in this Zone — See Controlled Hunts			

That portion of Unit 74 within Franklin County, and that portion of Unit 74 within the following boundary: Beginning at the intersection of State Highway 91 and Red Rock Road, east on Red Rock Road to Cottonwood Road, then north on Cottonwood Road to Johnson Road, then south on Johnson Road to the Franklin County boundary, then south and west along the Franklin County boundary to Highway 91, then west and north on Highway 91 to the starting point.

Bear River Zone (Units 75, 77, 78)

Motorized Hunting Rule Applies, August 30 - December 31, See Pages 104 - 106

	August/September	October	November	December
A Tag	Archery only — any elk Aug 30 - Sep 30	Any weapon — antlerless only Oct 25 - Nov 15		Muzzleloader only — antlerless only Dec 1 - Dec 31
B Tag	Archery only — spike or antlerless Aug 30 - Sep 14	Any weapon — antlered only Oct 15 - Oct 24		
	Note: 550 B Tag Quota Available First-Come, First-Served.			
	2021 Capped tags go on sale for Residents 7/12/2021 and Nonresidents 12/1/2020 Residents - If you apply for a controlled elk hunt there is a 5 day waiting period to purchase capped general elk tags, see page 2 for details.			

Diamond Creek Zone (Units 66A, 76)			
Motorized Hunting Rule Applies, August 30 - December 31, See Pages 104 - 106			
	August/September	October	November
A Tag	Archery only — any elk Aug 30 - Sep 30		
	2021 Capped tags go on sale for Residents 7/12/2021 and Nonresidents 12/1/2020 Residents - If you apply for a controlled elk hunt there is a 5 day waiting period to purchase capped general elk tags, see page 2 for details.		
B Tag	No B Tags in this Zone — See Controlled Hunts		

ELK GENERAL SEASON SPECIAL AREA DEFINITIONS AND DESCRIPTIONS

Notes:

1. **“Private agricultural lands”** are defined as privately-owned lands that are used for growing or storing plants for profit, in the form of pasture or stored feed for animal production, croplands, nurseries, vineyards, or orchards, but which do not include private timberlands.
2. **“Private irrigated agricultural lands”** are defined as private *irrigated* lands that are used for growing or storing plants for profit, in the form of pasture or stored feed for animal production, croplands, nurseries, vineyards, or orchards, but which do not include private timberlands.
3. **Outside the National Forest System Boundary in Lemhi, Beaverhead, Brownlee, and Pioneer Zones: — Antlerless Hunts:** These hunts are open only outside the National Forest System Boundary on or within 1 mile of private agricultural lands which is defined as private lands that are used for growing or storing plants for profit, in the form of pasture or stored feed for animal production, croplands, nurseries, vineyards, or orchards, but which do not include private timberlands. The National Forest System Boundary is a legislatively set boundary — it is not necessarily the boundary of Forest Service property. State, private and other lands within the National Forest System Boundary are not open to hunting during this season. (Please refer to a U.S. Forest Service map for the location of this boundary.)