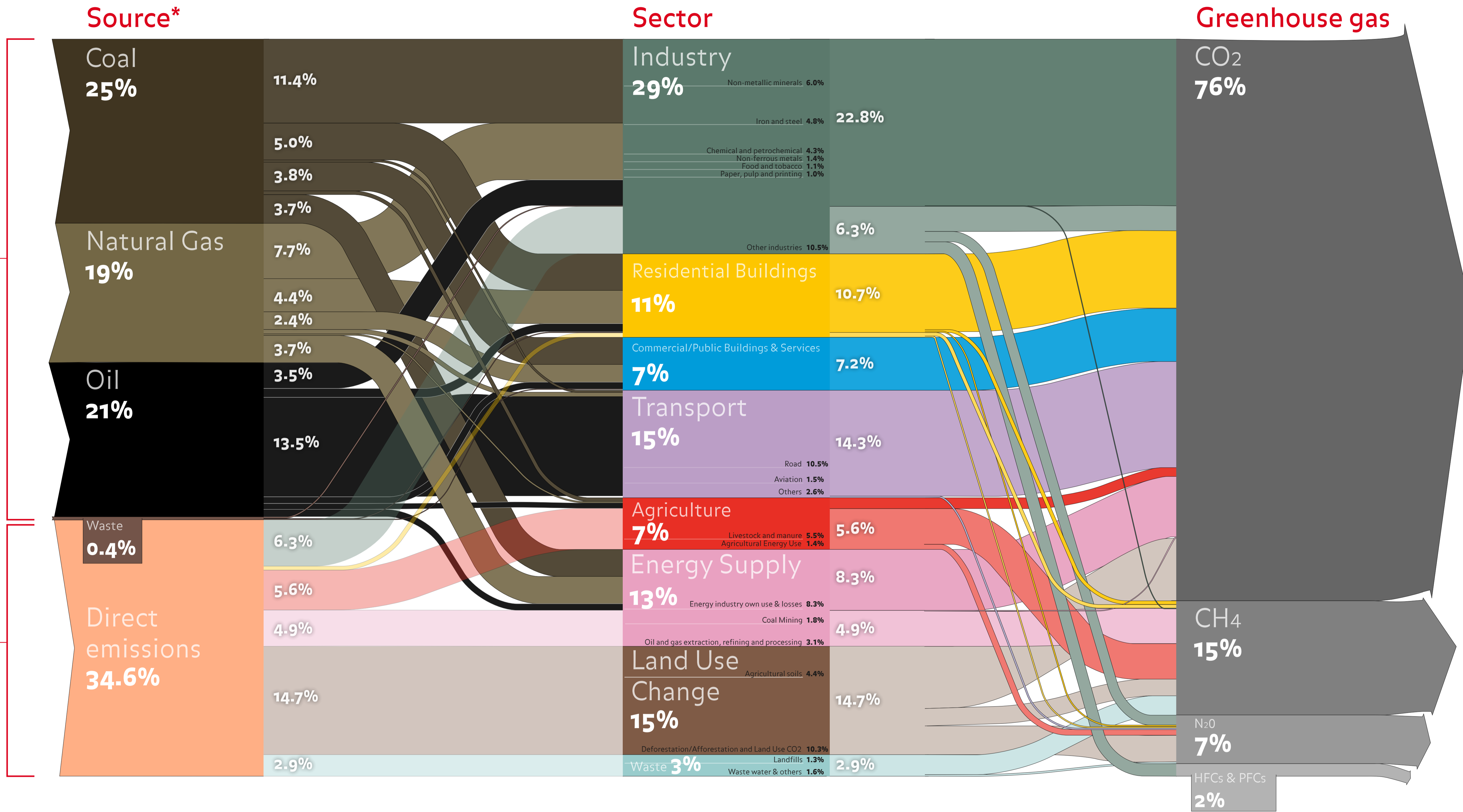


# WORLD GHG EMISSIONS FLOW CHART 2010

Total emission worldwide (2010)  
**48 629**  
MtCO<sub>2</sub> EQ



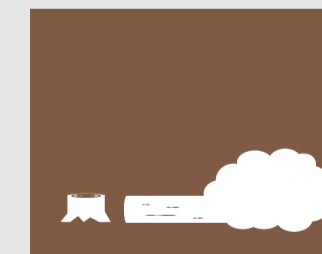
\* Greenhouse gases can arise from two sources

## DIRECT EMISSIONS (EXAMPLES)

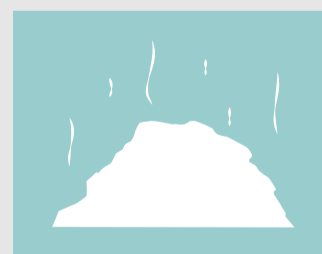
**Sector: Agricultural**  
Cows and other livestock emit tons of methane (CH<sub>4</sub>) by passing gas each day.



**Sector: Land Use Change**  
Cutting down trees for logging or agriculture releases CO<sub>2</sub> stored in the biomass.

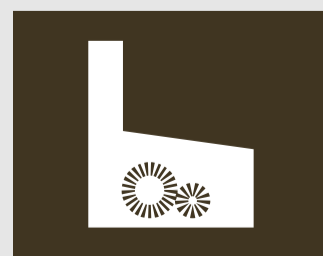


**Sector: Waste**  
Organic matter in landfills emits tons of methane each year.



## FOSSIL FUEL RELATED EMISSIONS

Burning fossil fuels (coal, natural gas and oil) in industry, residential sector, commercial & public sector, transport and energy supply.



ASN BANK ECOFYS

ANALYSIS BY ECOFYS. ALL THE DATA ARE FOR 2010.

THE GLOBAL ESTIMATE OF 48 629 MtCO<sub>2</sub> EQUIVALENT RESULTS FROM ADDING UP ALL CALCULATED DATA ON SECTOR LEVEL. ALL PERCENTAGES RELATE TO THE TOTAL EMISSION WORLDWIDE. THE DATA FOR LAND USE CHANGE ARE SUBJECT TO SIGNIFICANT UNCERTAINTIES.

THIS CHART IS INSPIRED BY A PREVIOUS CHART OF WRI, 2005

THE FOLLOWING SOURCES WERE USED:

IEA, 2012, CO<sub>2</sub> EMISSIONS DATABASE

JOINT RESEARCH CENTRE, EUROPEAN COMMISSION, 2011, GLOBAL EMISSIONS EDGAR V4.2, AVAILABLE AT [HTTP://EDGAR.JRC.EC.EUROPA.EU/OVERVIEW.PHP?V=42](http://edgar.jrc.ec.europa.eu/overview.php?v=42)

CDIAC, 2012, PRELIMINARY CO<sub>2</sub> EMISSIONS 2011, AVAILABLE AT [HTTP://CDIAC.ORNL.GOV/FTP/TRENDS/EMISSIONS/](http://cdiac.ornl.gov/ftp/trends/emissions/)

IEA, 2012, ENERGY BALANCES

GLOBAL CARBON PROJECT, 2012, DATA AVAILABLE AT [HTTP://WWW.GLOBALCARBONPROJECT.ORG/CARBONBUDGET/12/DATA.HTM](http://www.globalcarbonproject.org/carbonbudget/12/data.htm)