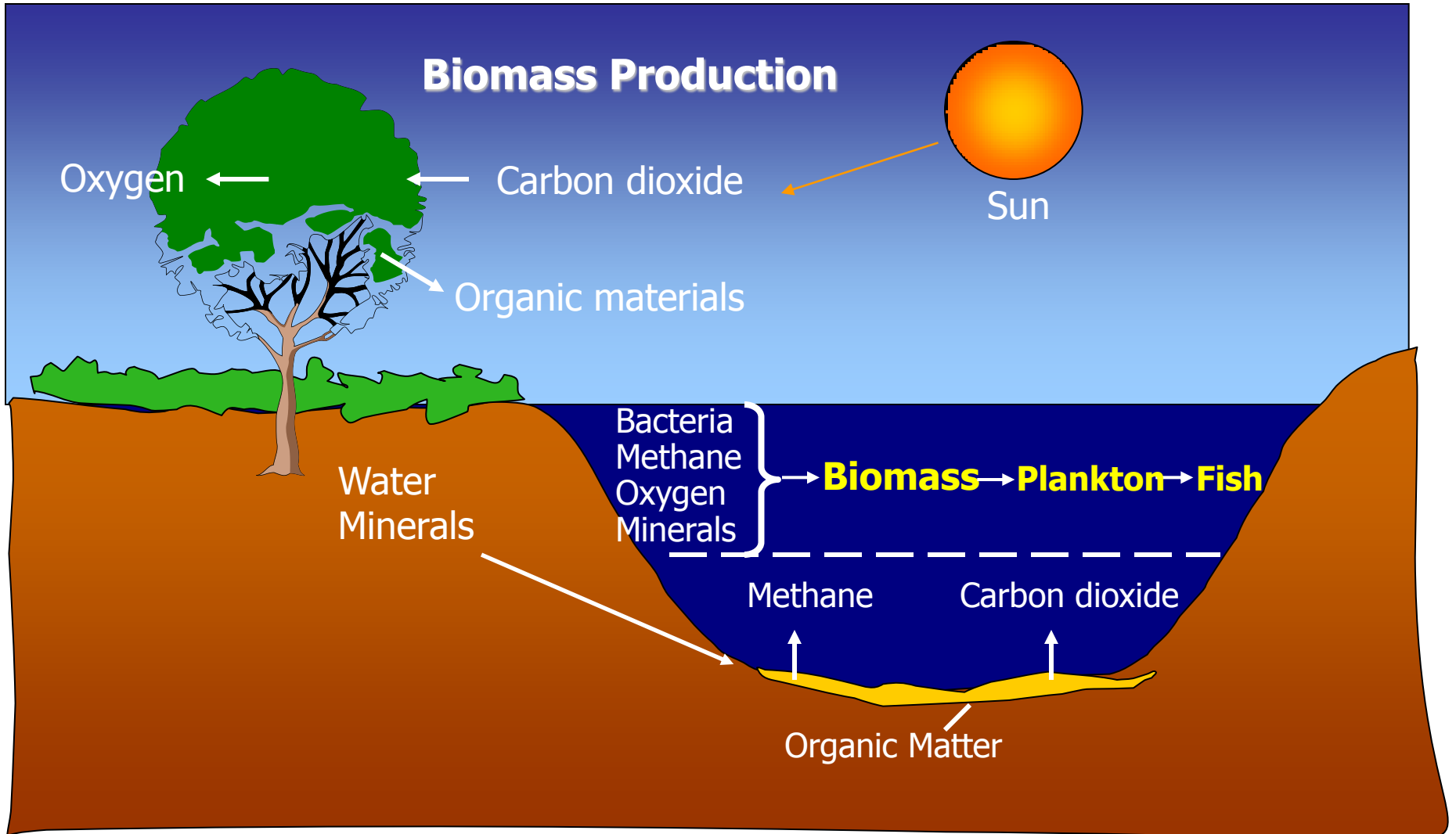




# Nature's Value Chain...





## *Methylococcus capsulatus*

Methane



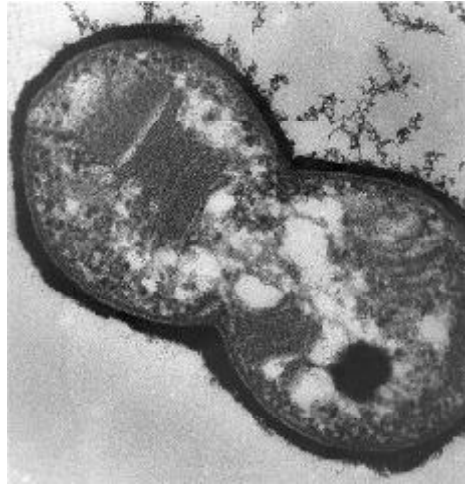
Oxygen



Ammonia



Minerals

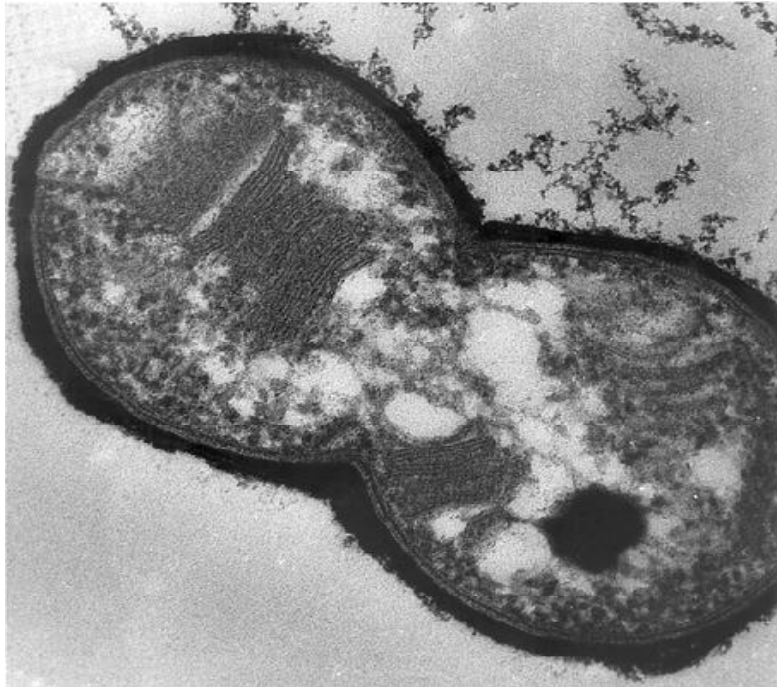


BioProtein



# Chemical composition; % DM

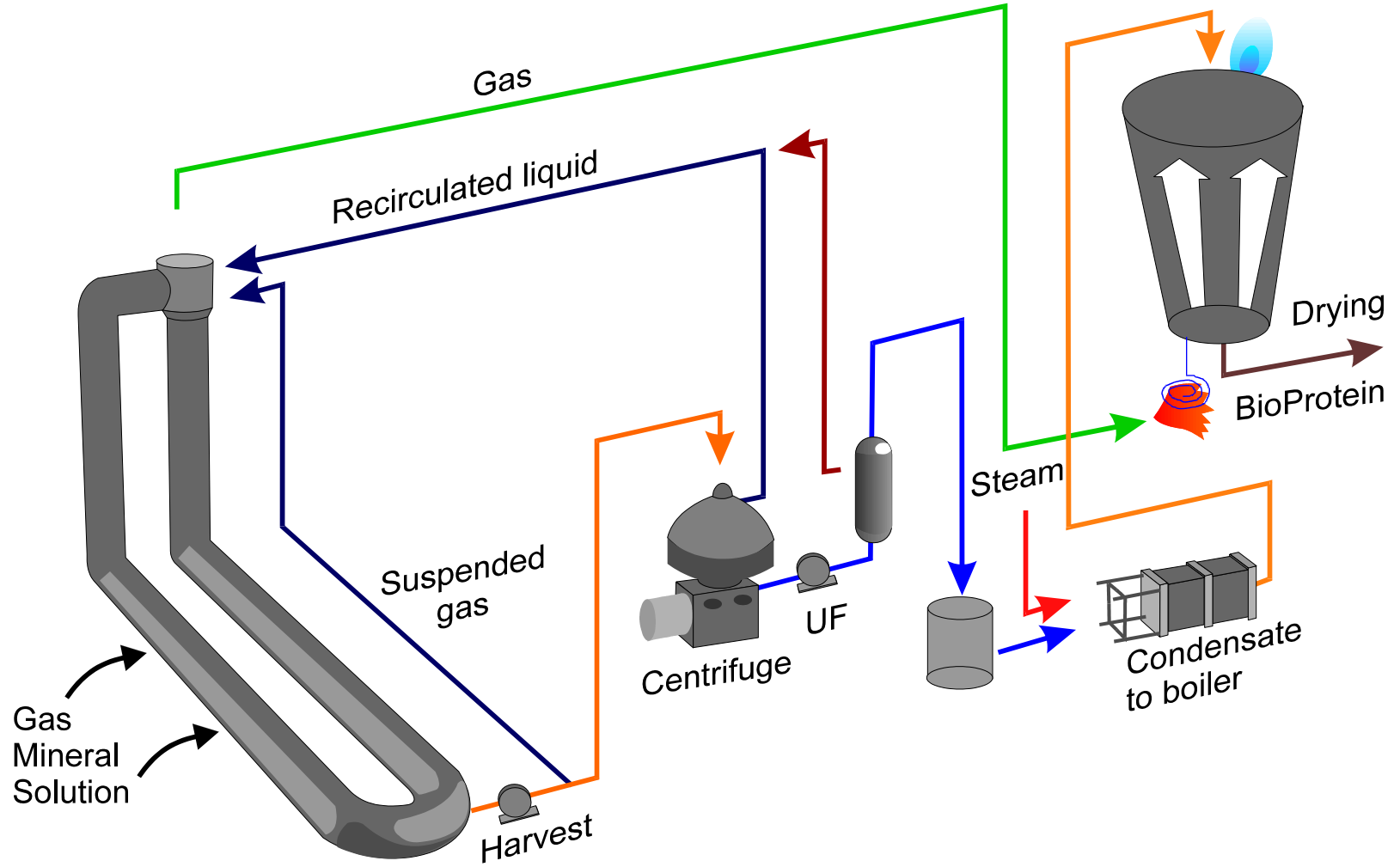
*Methylococcus capsulatus*



- Crude protein 70%
- Lipids 10%
- Fiber 1%
- Carbohydrates 12%
- Minerals 7%



# BioProtein Production





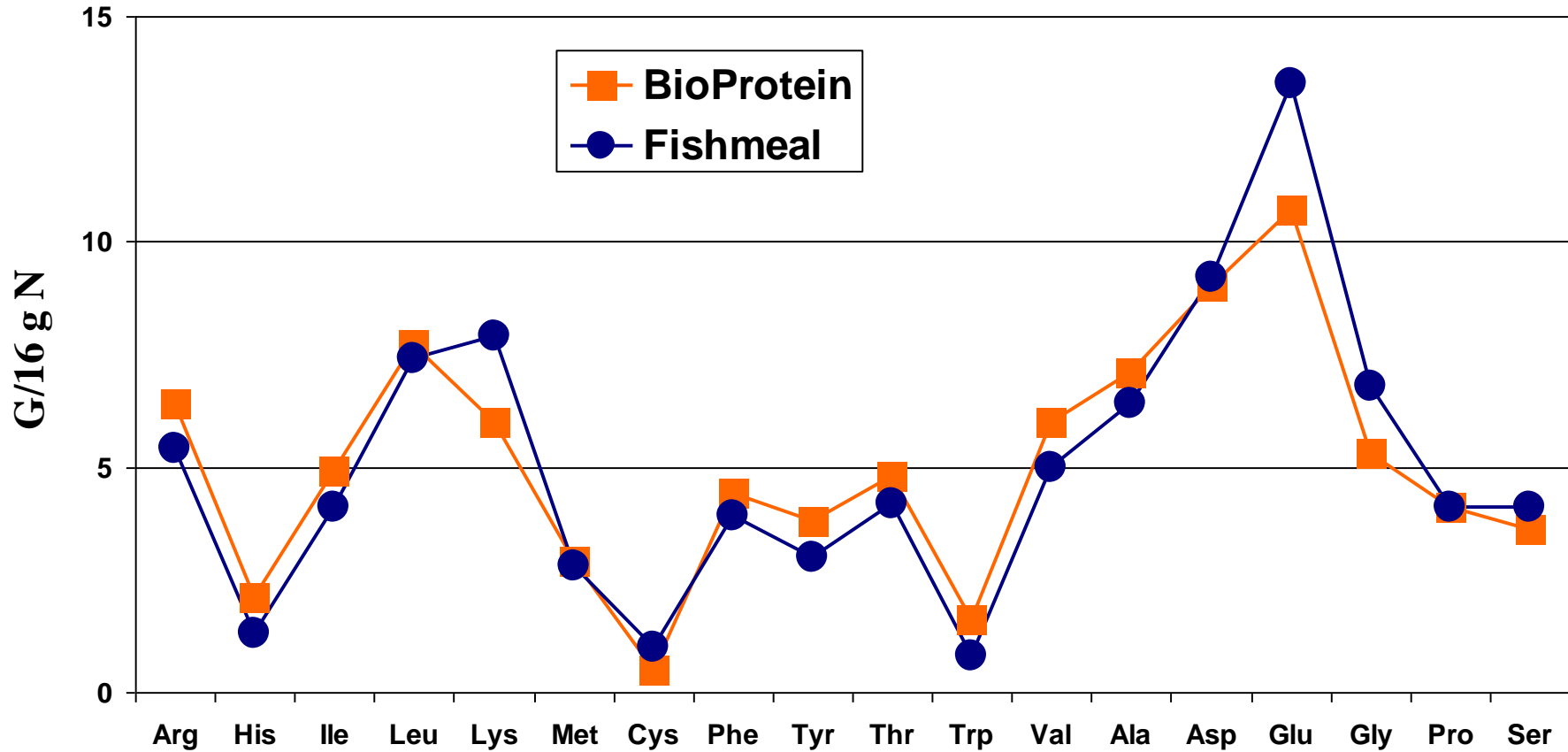
N O R F E R M

## Replicating Nature...

**World's Only Methane Based Fermentation Plant...**

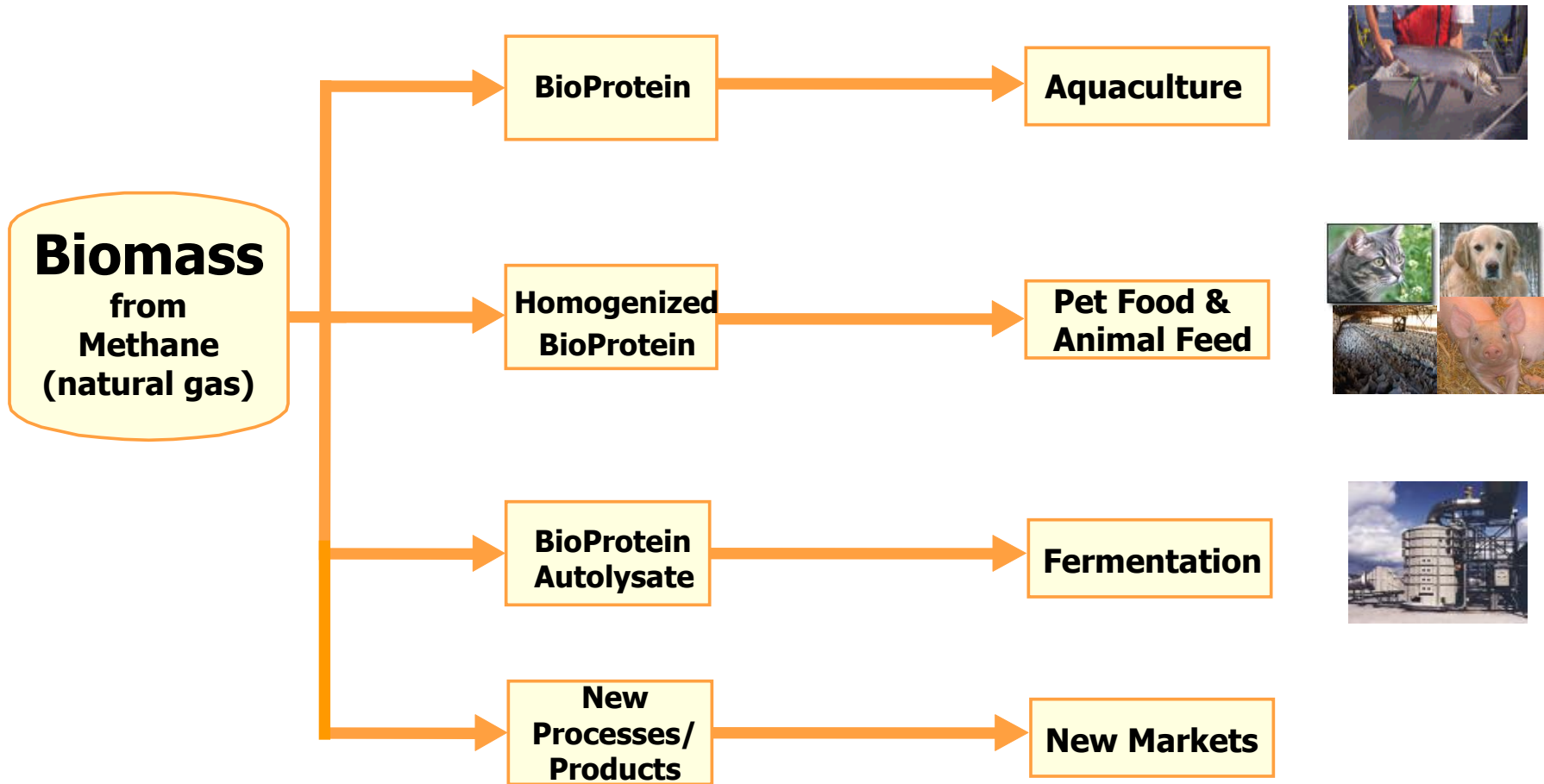


# Amino acid composition



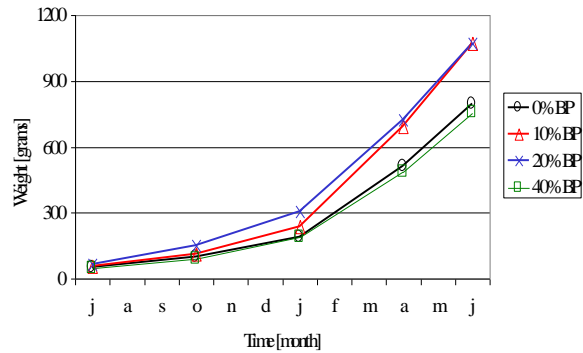


Process → Products → Markets

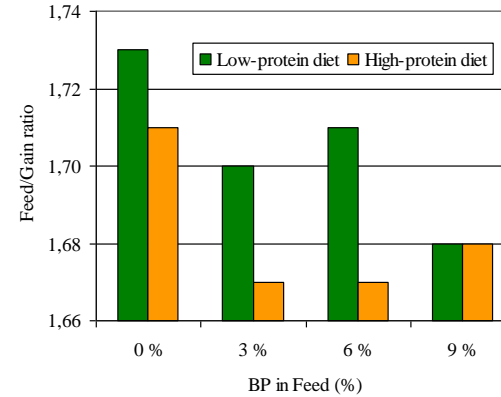


# Feeding trials on target animals

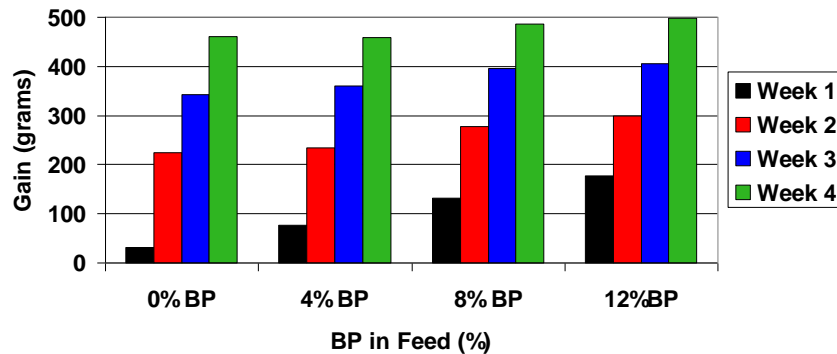
Atlantic Salmon growth



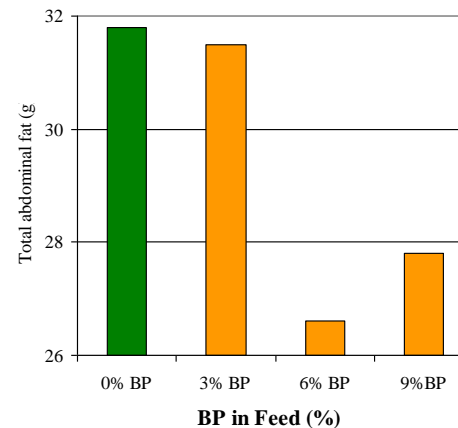
Feed/Gain-ratio Broiler Chicks



Daily growth gain -Weanling pigs



Abdominal Fat - Broiler Chicks







N O R F E R M



B i o P r o t e i n<sup>®</sup>

## **Product Features:**

- BioProtein is produced in a stable, year-a-round process, providing a consistent media
- Balanced amino acid composition
- No BSE or GMO relations
- Free from environmental toxins
- No negative effect on the environment
- Approved by EU to be used as a protein source in feed for fish and animals
- The production site is "Food Grade Approved"



## Rammebetingelser

- Myndighetene /oljeselskapene har støttet en oppstrøms leverandør industri til å bli verdensledende.
- Dette har ikke skjedd nedstrøms når det gjelder utvikling av nye gassbaserte produkter og etablering av ny industri.
- Myndighetene har ikke klart å etablere rammebetingelser som muliggjør bygging av gasskraftverk som også gir muligheter for ny industriell utvikling.
- Bioprotein AS er i forhandlinger med malaysiske myndigheter om bygging av et 40 000 tonn/år anlegg.
- Regionale myndigheter disponerer gass til rimelige priser som kan brukes innen FoU og til industriell utvikling i regionen.