

HOW TO READ A KODAK FILM CAN LABEL

Film Speed

Film provided with KEYCODE
Numbered edge print

Upper portion of label is peelable; it
can be placed on film magazine as
reminder of product being used

Tungsten rating with no
filter will give indicated
speed rating

Daylight rating with
an 85 filter will give
indicated speed rating

5219 = Film code
221 = Emulsion number
011 = Roll number
02 = Part number
03 = Strip number
11 = Unit number

UCC/EAN 128 Codes

Catalog Number

Length of roll in meters (feet)

Finished film specification

35 = Film width (35mm)
N = Perforation type (Negative)
4740 = Metric pitch measurement (4.740 mm)
(1866) = Imperial pitch measurement (0.1866 inch)
EI = Emulsion position and winding type (Emulsion In)

Kodak
VISION 3
Color Negative Film ■■■

500T/5219

Process EGN-2 5219 221 011.02 03.11

☉ 3200 K	EI 500/28°
☀ Filter No. 85	EI 320/26°

35 N4740(1866) EI
5219 221 011.02 03.11
122m (400ft)
Sp 718

(01)40041778738304(30)01
(3220)000400(10)5219221011020311

CAT 873 8304

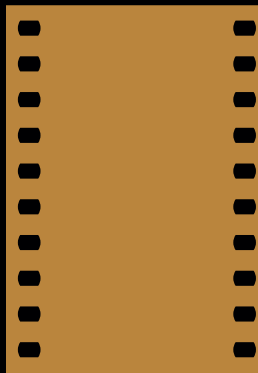
KPI27101 www.kodak.com/go/motion
TM/NC/MR: Kodak, Keycode, Vision
©Kodak

FILM SIZES

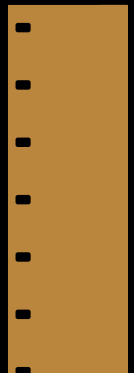
65 mm



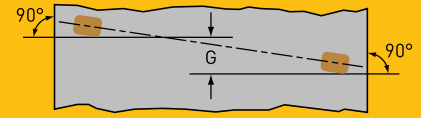
35 mm



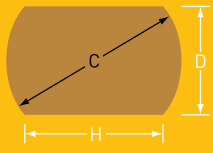
16 mm



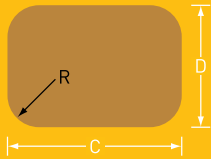
PERFORATIONS



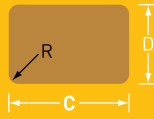
"G"— is a measure of how straight the perforations are in line with each other.



Bell & Howell - "Negative" perforation used on most camera negative films. Evolved from early round perforations.



Kodak Standard - "Positive" perforation. Large size, rounded corners are used for extra strength. Used primarily for release prints.



16 mm perforations - are the same size and shape for all film types.

Dimension	PERFORATION TYPE					
	(N) Bell & Howell		(P) Kodak Standard		16 Millimeter	
	Inches	mm	Inches	mm	Inches	mm
C	0.110	2.794	0.110	2.794	0.072	1.829
D	0.073	1.854	0.078	1.981	0.050	1.270
G	0.001	0.03	0.001	0.03	0.001	0.250
H	0.082	2.08				
R			0.020	0.510	0.010	0.250

SPOOLS



S-83

KODAK Spool for AATON A-MINIMA Camera



R-90—16 mm

3.615-in. (92 mm) OD metal camera spool. Square hole with single keyway in both flanges. Center hole aligned on both flanges. For 100-ft. (30 m) 16 mm film loads.

S-83—35 mm

3.62-in. (93 mm) OD metal camera spool. Square hole with single keyway in both flanges. Center hole aligned on both flanges. For 100- and 150-ft. (30 m and 46 m) film loads.

KODAK Spool for AATON A-MINIMA Camera—16 mm

Specially-designed flexible flange 200 ft (61 m) plastic daylight spool. B-wind, emulsion out. Specific to the A-MINIMA Camera consisting of 2 flexible flanges and a non-keyed 2-inch core. Can be loaded in subdued light without edge fogging.

CORES



Type P Core—65 mm

3-in. (76 mm) OD plastic core. Used for various film lengths and codes.



Type Y and EE Cores—35 mm

3-in. (76 mm) OD plastic core. Used for various film lengths and codes.



Type U Core—35 mm

2-in. (51 mm) OD plastic core. Used with various film lengths and codes.



Type T Core—16 mm

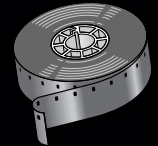
2-in. (51 mm) OD, 1-in. (25.4 mm) ID plastic core. Used with most 16 mm.



Type Z Core—16 mm

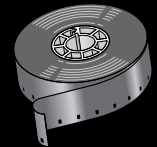
3-in. (76 mm) OD plastic core. Used with camera and print films in rolls longer than 400 ft. (122 m)

WINDINGS



16 mm Winding A

Emulsion side in. Used for contact printing, in some sound recorders and A-MINIMA cameras.



16 mm Winding B

Emulsion side in. Used for camera film, Super 16 camera film, optical prints, and on bidirectional printers.