

THE GARAGE

HIGHBURY

Venue Information:

General Business Manager/Diary Holder - Eral Hassan

e: eral.hassan@mamaco.com

p: 0207 619 6722

m: 07508 019 611

Assistant General Manager – David Pyatt

e: david.pyatt@mamaco.com

p: 0207 619 6721

Bars Manager – George Iordanidis

e: george.iordanidis@mamaco.com

p: 0207 619 6721

Technical Manager – Luca Rosa

e: luca.rosa@mamaco.com

m: 07960 219 377

Head Office:

Mama & Company

59 – 65 Worship Street

London

EC2A 2DU

P: 0207 688 9000

Venue specifics:

Capacity:

Main Room - 600 standing or 240 seated/60 standing sellable, 1 production office, 2 dressing rooms, shower & toilet

Upstairs - 150 sellable, 1 production office

MiniBar - 50 sellable

All room club - 750 sellable, 2 production offices, 3 dressing rooms, shower & toilet

Age restrictions:

Live shows are 14+, under 16s accompanied by an adult, proof of age on request

Club and late night events are strictly 18+, proof of age on request

No under 14s can be admitted to the venue at any time at all

NB – proof of age is photographic and limited to either a passport, drivers license or a PASS scheme card with a genuine holographic logo

Curfews:

Live shows 11pm if no club to follow, 10.00pm if club does follow

Late night 4am Fri & Sat, 2am Sun and 3am midweek days

Licensed for indoor sporting events including wrestling and boxing

Postal and public access address:

20 - 22 Highbury Corner

Islington

London

N5 1RD

<http://goo.gl/maps/vZUR6>

Load in access address:

1 Highbury Crescent

Islington

London

N5 1RN

<http://goo.gl/maps/pjp8E>

Parking for tour or production vehicles:

* Pay and display on the bays in Highbury Crescent – 2hrs max, free after 6.30pm

* Pay per bay per day by completing a 'Permission to Park' form from the council, rates change regularly. Use link below.

* Night liners and large production vehicles will need to pay for each bay they use.

Please choose 'Essential Works' after providing the Load In postcode and choosing the Load in street address. Use link below.

* Suspending parking bays either directly outside stage door or for numerous days has an application charge of £80 with each bay charged at the latest rate per day.

* Further information is available by following the link direct to the councils'

'Permission to Park' application page <http://bit.ly/SeZT0m>

NB - The venue does not have any dedicated parking of its' own, there are just the options above

Accreditation and general policies:

* The venue management or promoters' rep will issue you with suitable passes

* Please note that the venue management prohibits all professional or semi-professional filming and audio recording unless a facility fee has been agreed

* The venue considers any camera with a removable lens to be professional or semi-professional and will request these are held at the box office unless a photo pass has been agreed in advance

* We do not hold a fixed site radio frequency license, and we consider obtaining the relevant licenses for use of radio mics or in-ear systems to be the responsibility of the touring party, promoter or their third party hire company to supply the relevant paperwork to the venue prior to equipment use. Any fines from lack of supply of such licenses will be levied to the promoter on the day.

* www.jfmg.co.uk details licenses and prohibited frequencies.

House facilities:

Shore power

Merchandise

Wireless

Catering

Disabled Access

Loading crew

Storage

Towels

Contact Technical Manager for details

Dedicated concession free area in main and upstairs rooms

Available throughout the building, password on request

Buyout only, no internal catering facilities

Main Room and MiniBar only via public access doors, adapted toilet facility available in downstairs only.

Booked by the venue, contact Technical Manager for rates

Very limited storage available, enquire specifically to be sure we can accommodate

We hold a limited stock of towels, should you require large amounts please ask for rates and availability

Local amenities:

Emergency Surgery

St Pauls Rd Medical Centre

248 St Pauls Rd

London

N1 2LJ

T: 0844 477 8649

<http://goo.gl/maps/QrA3y>

Emergency Dentist

Kings Cross Dental Clinic

285 Gray's Inn Road

London

WC1X 8QD

T: 0207 837 0773

<http://goo.gl/maps/lqPPm>

Pharmacist

Highbury Pharmacy

14 Highbury Park

London

N5 2AB

T: 0207 226 2666

<http://goo.gl/maps/Ykxih>

Mini Cab/Taxi Service

Islington Cars

e: info@islingtoncars.co.uk

T: 0800 917 4567

T: 0207 700 2222

www.islingtoncars.co.uk

* We will happily give you recommendations for restaurants, hostels and hotels.

* There are 3 supermarkets within a few minutes walk of the venue

* Backline hire from Matt Snowball Music – 0207 700 6555

* Marketing spec on request.

Main Room Production Specifications

Sound

Front of House Desk - Avid Profile w/ Mix Rack (V3)
- 1x Tecpro Comm System
- 1x Tascam CDRW901SL CD-Recorder 8

PA

4x Turbosound TA-880H
4x Turbosound TSW218
2x Turbosound TCS152 Delay

Amps & Controlling

2x Turbosound T25
1x Turbosound T45
1x Turbosound T90
2x Turbosound LMS-D24

Monitor Desk - Avid Profile w/ Mix Rack (V3)

Monitor Speakers

10x Turbosound NuQ15 incl. Listen Wedge
1x Turbosound B15

Amps & Controlling

2x EV CPS 4.5 4x500W
3x EV CPS 4.10 4x1000W
3x Nexia SP System Controller

Multicore

48-8
3x 16ch satellites

Microphones

Shure, Sennheiser, Beyer
8x Passive DI Boxes & 4x Active DI Boxes

DJ Equipment

2x Technics SL1210 Mk2
2x Pioneer CDJ1000
1x Pioneer DJM700

Staging

Size 8.3x4.2m (Monitor World on Stage Left within this area, see plot)
Height 1m
Clearance 4m
Drum riser No
Barriers Mojo-Style

Lighting

Desk - Avolite Pearl Expert (Titan v3.1) w/ external screen
- 1x Avolite ART2000 PowerCube dimmers

Front truss (Static)

2x 4-Bar Par64 CP88 (separate)
2x 2 cell blinder
4x Robe Colorwash 250AT

Back truss (Static)

2x 6-Bar Par64 CP88 (linked)
2x 2 cell blinder
4x Robe Colorspot 250AT
1x Martin Atomic 3000

Room

2x Robe DT3000
4x Anolis ArcPad 48
2x LED Par

Haze

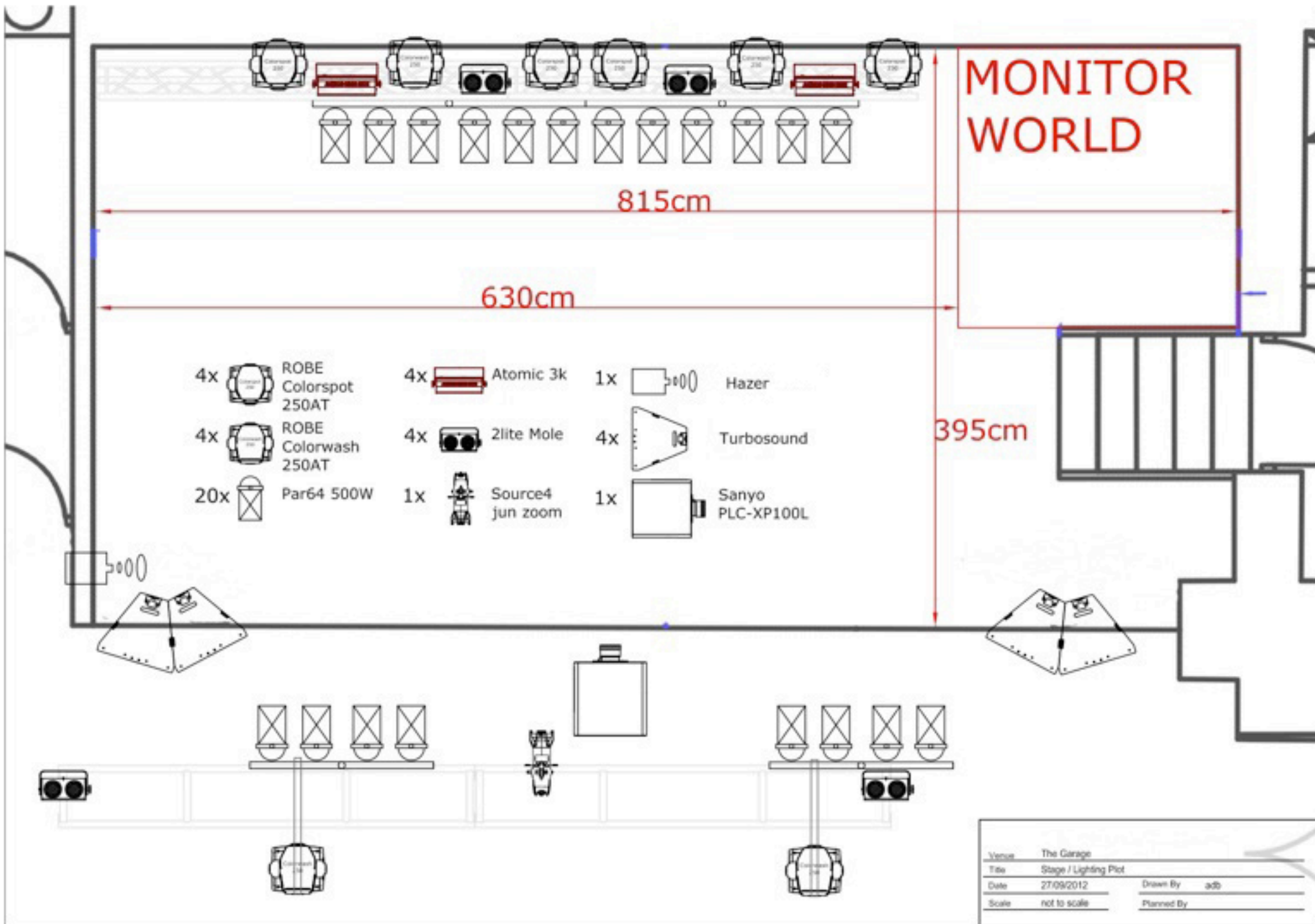
1x Chauvet Arena Hazer 3

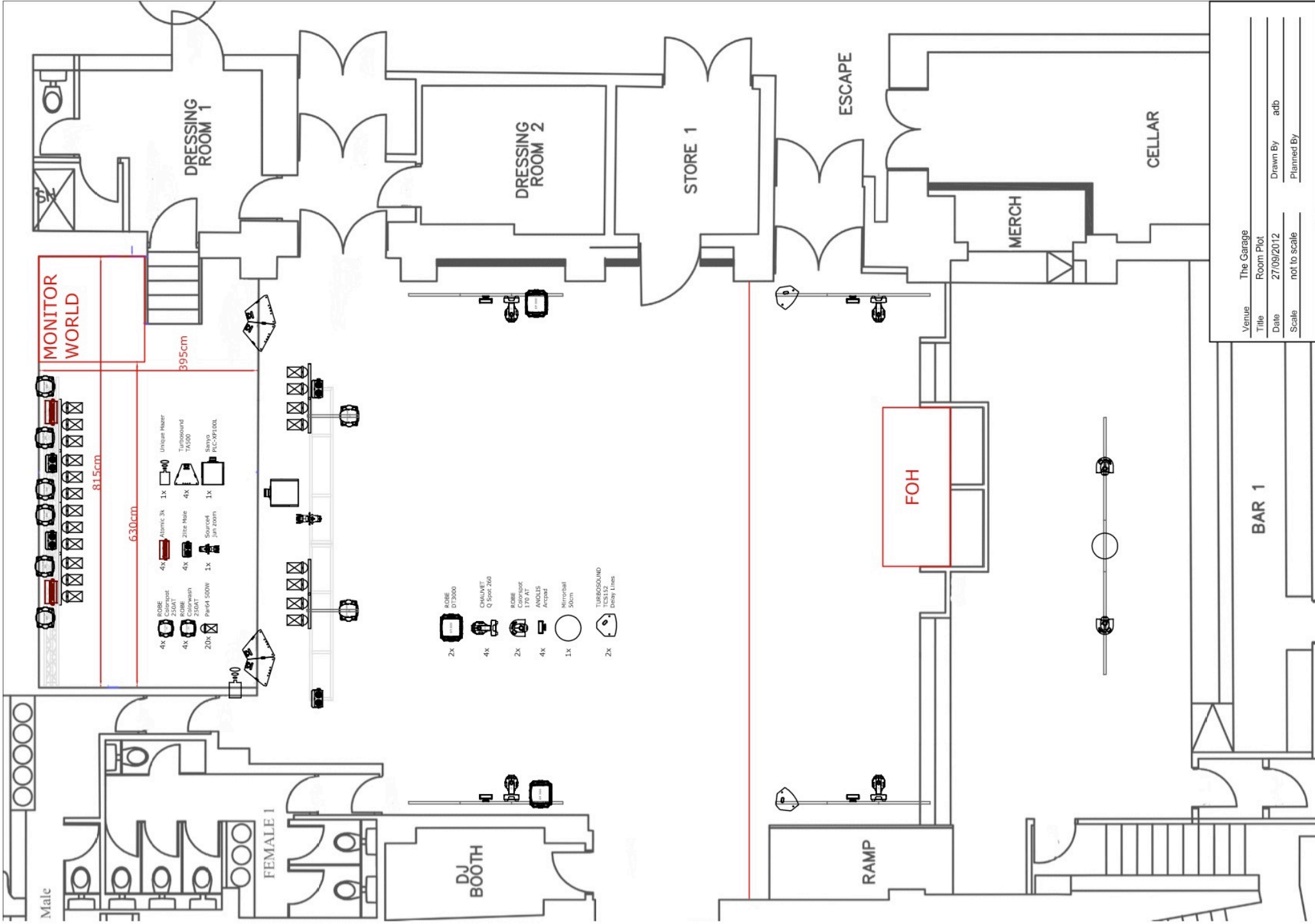
Audio/Visual

3x screens 32" above Main Bar
1x screen 42" behind Main Bar
3x screens 32" in entrance area
1x pull down screen behind stage
1x Sanyo PLC-XP100L (1024*768) projector

Input

DVD or VGA (at Front of House position)





Upstairs Room Production Specifications

Sound

Front Of House Desk - Yamaha LS9 32Ch

PA

2x Turbosound TA 500

2x Turbosound TSW 218

Amps & Controlling

MC2 T45/25 Amps

Nexia CS System Controller

EV CPS 4.10 4x1000W

Monitors

4x Turbosound TFM212

Multicore

32-8

Microphones

Shure, Sennheiser, Beyer

Shared with Main Room

DJ Equipment

2x Technics SL1210 Mk2

2x Pioneer CDJ1000

1x Pioneer DJM600

Lighting

Control Desk - Avolite Azure

Fixtures

2x Robe Clubspot 170AT

8x Anolis Strip short (stage)

4x Anolis Strip long (room)

2x Anolis ArcPower 144

2x LED Par

Haze

1 x Gem Hazer

Stage

Size 4.0m x 3.3m

Clearance 2.5m

Drum riser No

Barriers

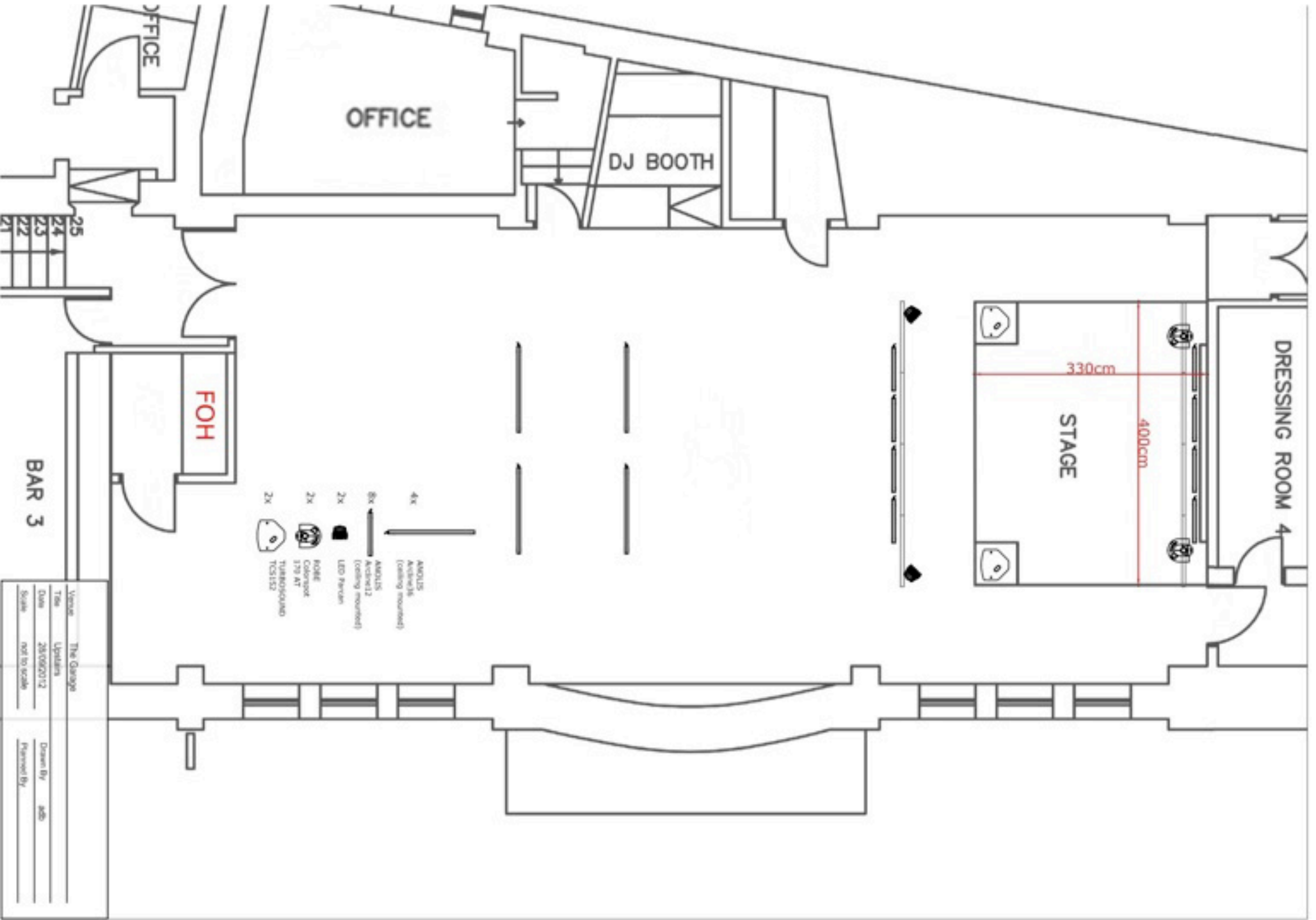
No

AV

Screens - 3 screens 32"
- 1 pull down screen behind stage

Projector Sanyo (1024*768)

Input DVD or VGA (at Front Of House position)



Venue	The Garage
Title	Layouts
Date	28/06/2012
Scale	not to scale
Drawn By	ash
Planned By	