

# 164 Stone-curlew

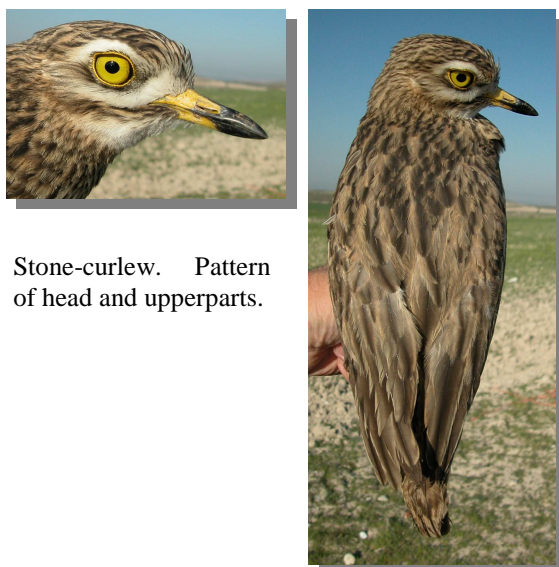


Stone-curlew. Adult (08-IV).

## STONE-CURLEW (*Burhinus oediconemus*)

### IDENTIFICATION

38-44 cm. Brown sandy plumage; yellow iris and legs; yellow bill with black tip; two white bands on wings.



Stone-curlew. Pattern of head and upperparts.

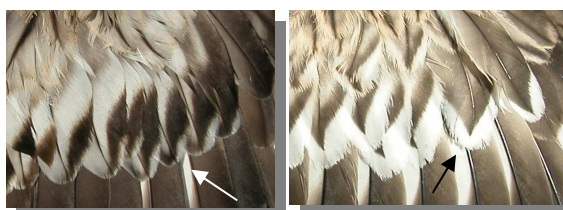
### AGEING

3 types of age can be recognized:

**Juvenile** with fresh plumage; greater coverts with broad white band on tip.

**1st year autumn/2nd year spring** with moult limit between changed and **juvenile** retained greater coverts (**CAUTION:** some birds can change all); flight feathers with the seam wear and worn than **adults**.

**Adult** usually with different wear on flight feathers; all greater coverts with narrow white band wearing to black tip.



Stone-curlew. Ageing. Pattern of greater coverts: left adult; right juvenile.

### MOULT

Complete **postbreeding** moult, with a large moult period between April and October; some birds retain flight feathers during the winter which are moulted in spring. Partial **postjuvenile** moult including body feathers, central pair of tail feathers, and usually all or most of lesser and median wing coverts; some birds moult all or most of greater coverts and all tail feathers; usually finished in November.

### SIMILAR SPECIES

This species is unmistakable.

### SEXING

Plumage of both sexes alike.

### PHENOLOGY

I	II	III	IV	V	VI	VII	VIII	IX	X	XI	XII

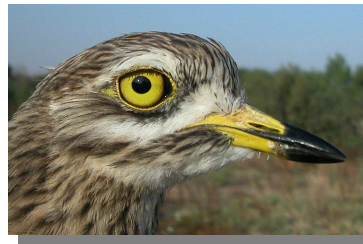
### STATUS EN ARAGON

Summer visitor with wintering birds in the Ebro Valley. Breeds widely distributed throughout the Region, absent from mountainous areas.

# 164 Stone-curlew



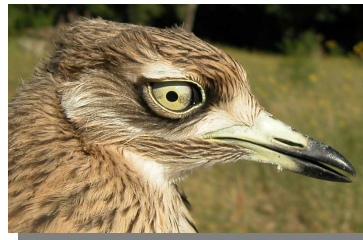
Stone-curlew. 2nd year spring (11-IV).



Stone-curlew. Head pattern: top 1st year autumn (09-IX); bottom juvenile (27-VII).



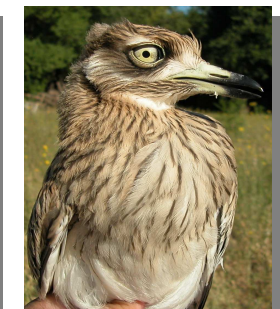
Stone-curlew. 1st year autumn (09-IX).



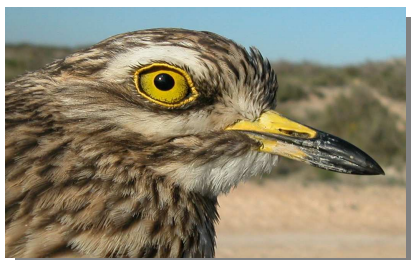
Stone-curlew. Breast pattern: left adult (08-IV); right 2nd year spring (11-IV).



Stone-curlew. Juvenile (27-VII).



Stone-curlew. Breast pattern: left 1st year autumn (09-IX); right juvenile (27-VII).



# 164 Stone-curlew



Stone-curlew. Upperpart pattern: left adult (08-IV); right 2nd year spring (11-IV).



Stone-curlew. Upperpart pattern: left 1st year autumn (09-IX); right juvenile (27-VII).



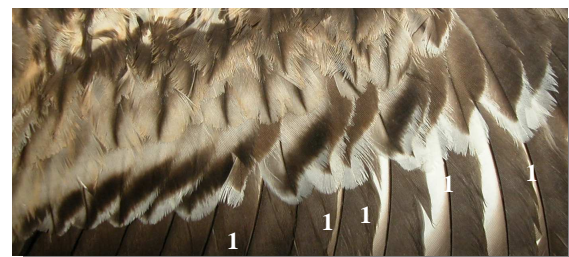
Stone-curlew. Tail pattern: left adult (08-IV); right 2nd year spring (11-IV).



Stone-curlew. Tail pattern: left 1st year autumn (09-IX); right juvenile (27-VII).



Stone-curlew. Adult: pattern of greater coverts (08-IV).



Stone-curlew. 2nd year spring: pattern of greater coverts (1 juvenile feathers) (08-IV).

# 164 Stone-curlew



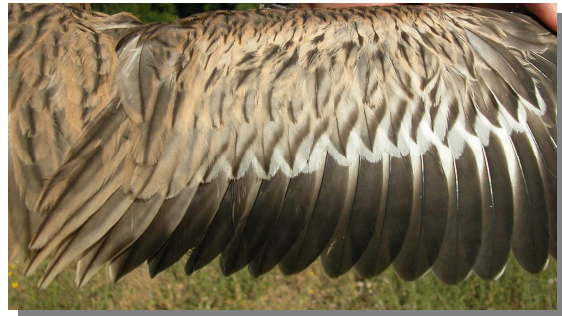
Stone-curlew. 1st year autumn: pattern of greater coverts (09-IX).



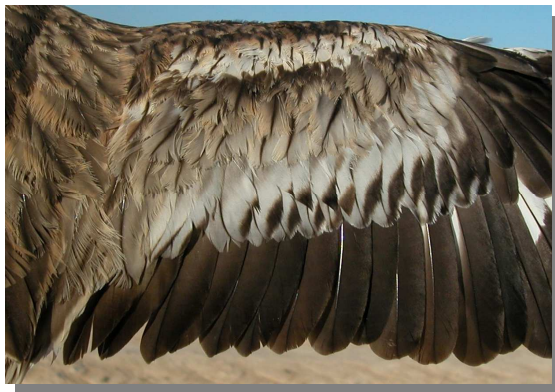
Stone-curlew. 1st year autumn: pattern of secondaries (09-IX).



Stone-curlew. Juvenile: pattern of greater coverts (27-VII).



Stone-curlew. Juvenile: pattern of secondaries (27-VII).



Stone-curlew. Adult: pattern of secondaries (08-IV).



Stone-curlew. Adult: pattern of primaries (08-IV).



Stone-curlew. 2nd year spring: pattern of secondaries (11-IV).



Stone-curlew. 2nd year spring: pattern of primaries (11-IV).

# 164 Stone-curlew



Stone-curlew. 1st year autumn: pattern of primaries (09-IX).



Stone-curlew. Juvenile: pattern of primaries (27-VII).



Stone-curlew. Adult: pattern of wing (08-IV).



Stone-curlew. 2nd year spring: pattern of wing (11-IV).



Stone-curlew. 1st year autumn: pattern of wing (09-IX)



Stone-curlew. Juvenile: pattern of wing (27-VII).