

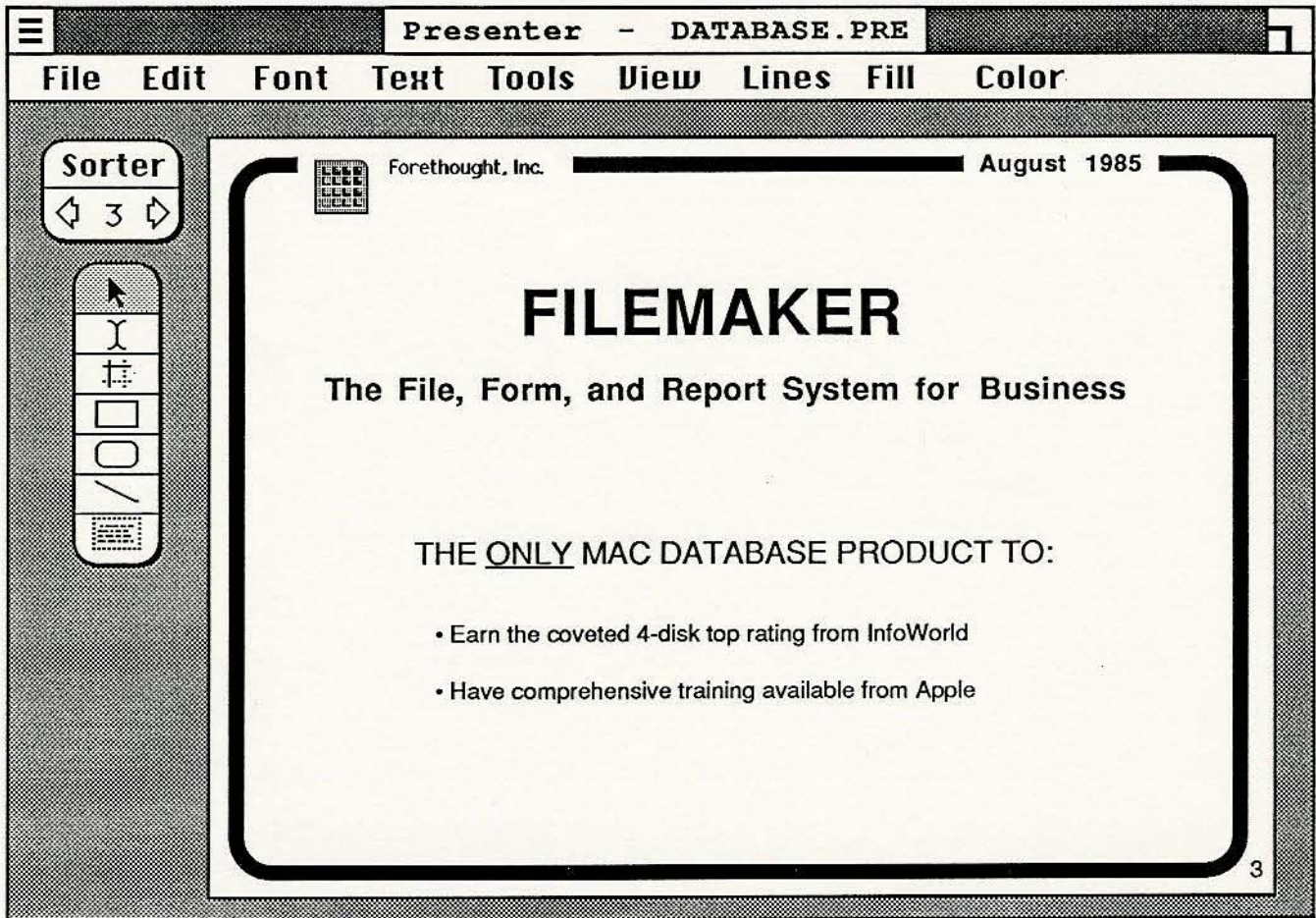
Forethought, Inc.

Presenter Design:  
Screens, Menus, Dialogs, Output

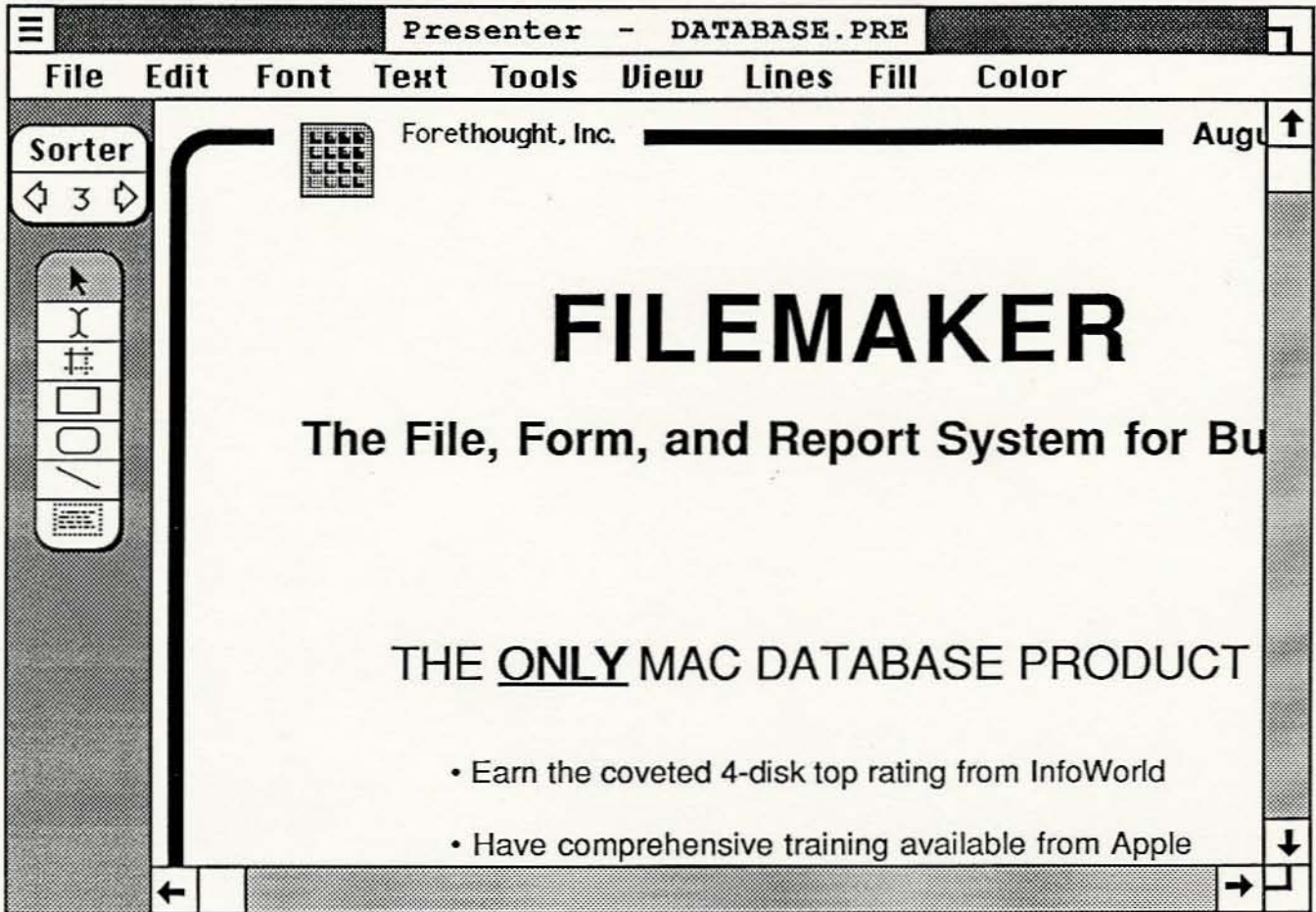
August 21, 1985

Dennis Austin  
Robert Gaskins

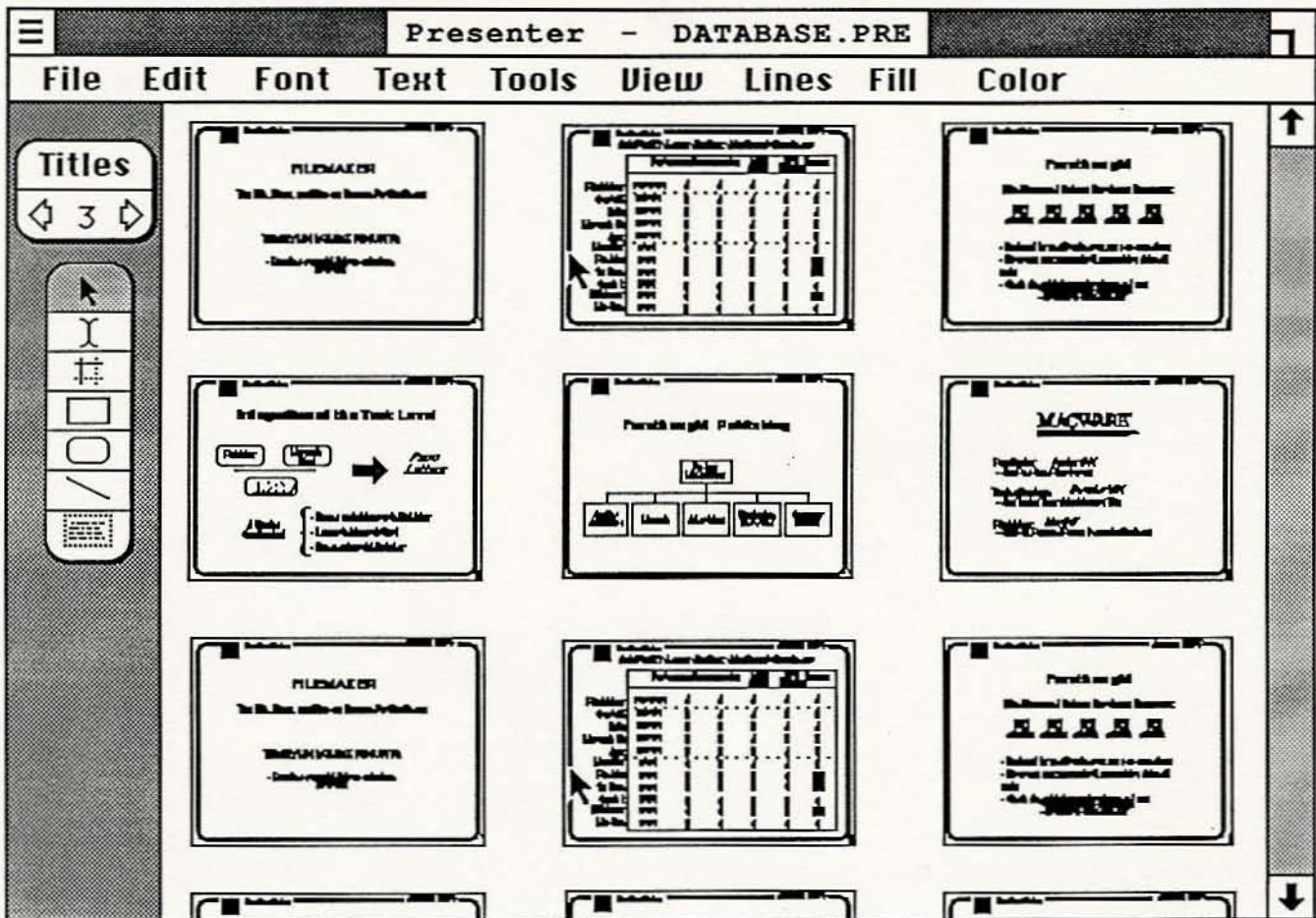
Forethought, Inc.  
250 Sobrante Way  
Sunnyvale, California 94086  
(408) 737-7070



In this view, the slide is shown with 3/4 reduction. Since it can entirely fit in the window, the scroll bars are eliminated and the background pattern is opened up.



This is a sample Presenter window. The window is too small to show the complete slide in this view, so scroll bars are displayed. The gray background on the left is shrunk to its minimum width.

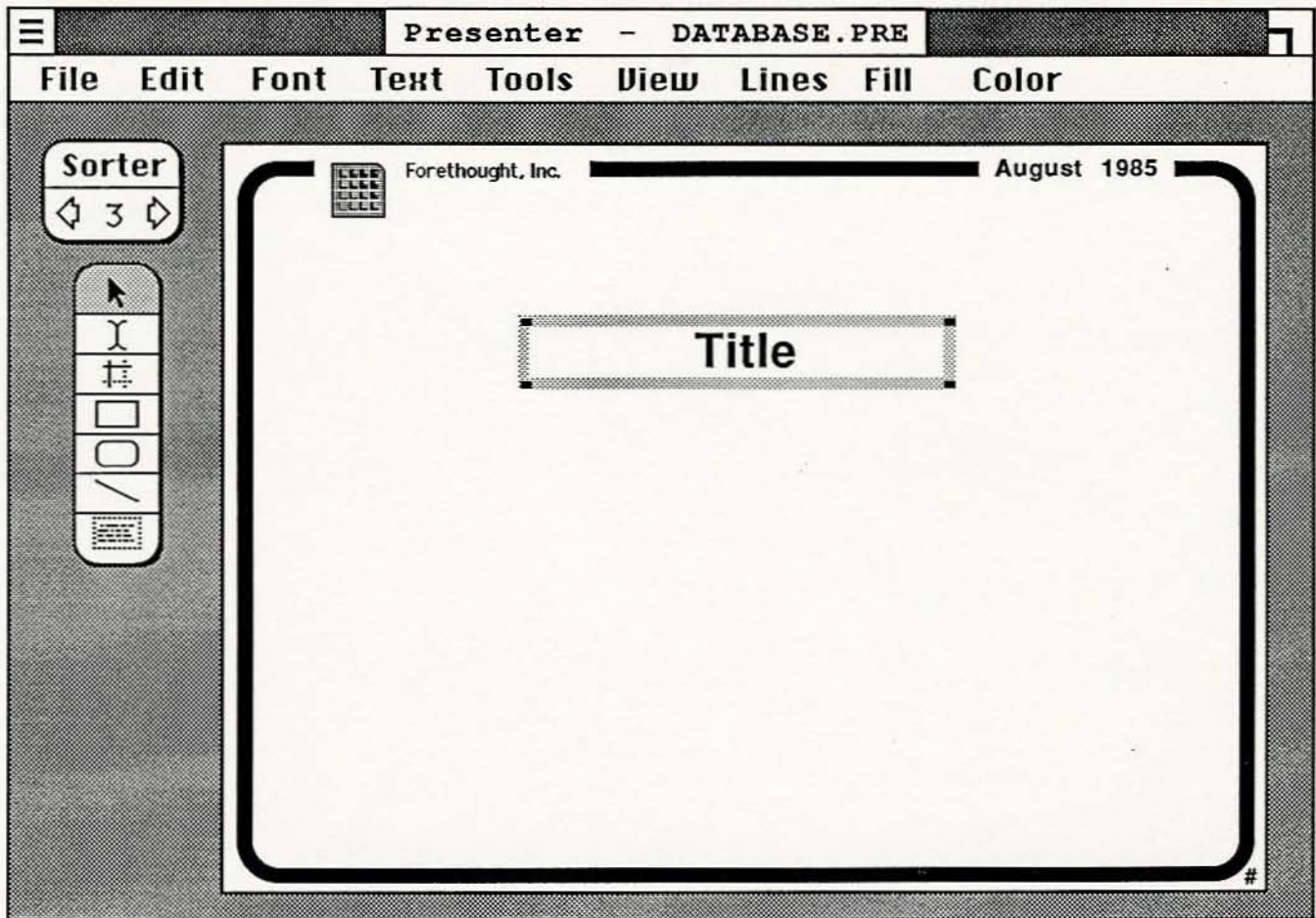


This sample window shows the slide sorter in operation. In this view, entire slides or sequences of slides may be cut and pasted, either to reorder the presentation or to copy between presentations.

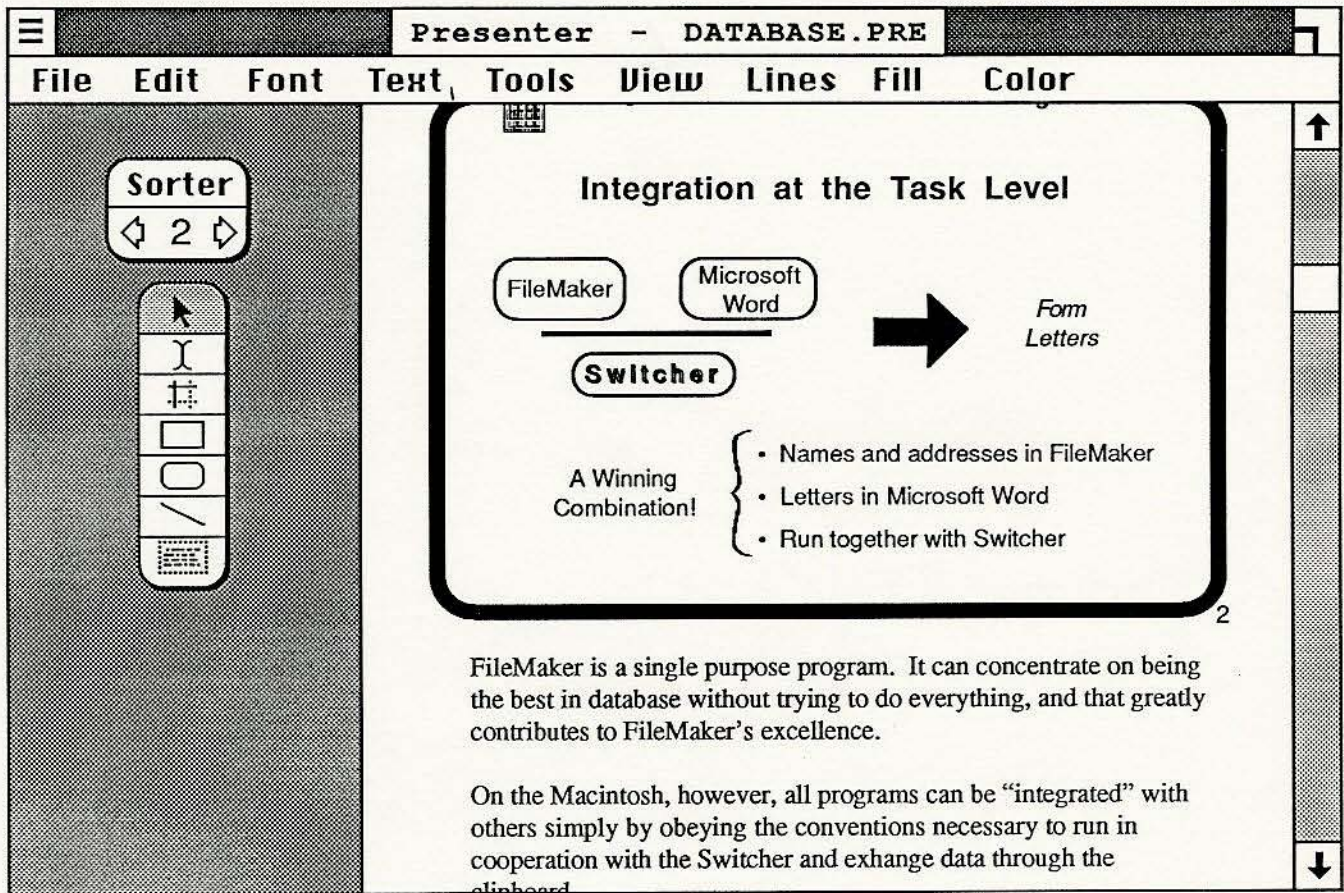
To return to normal editing, simply double click one of the slides.



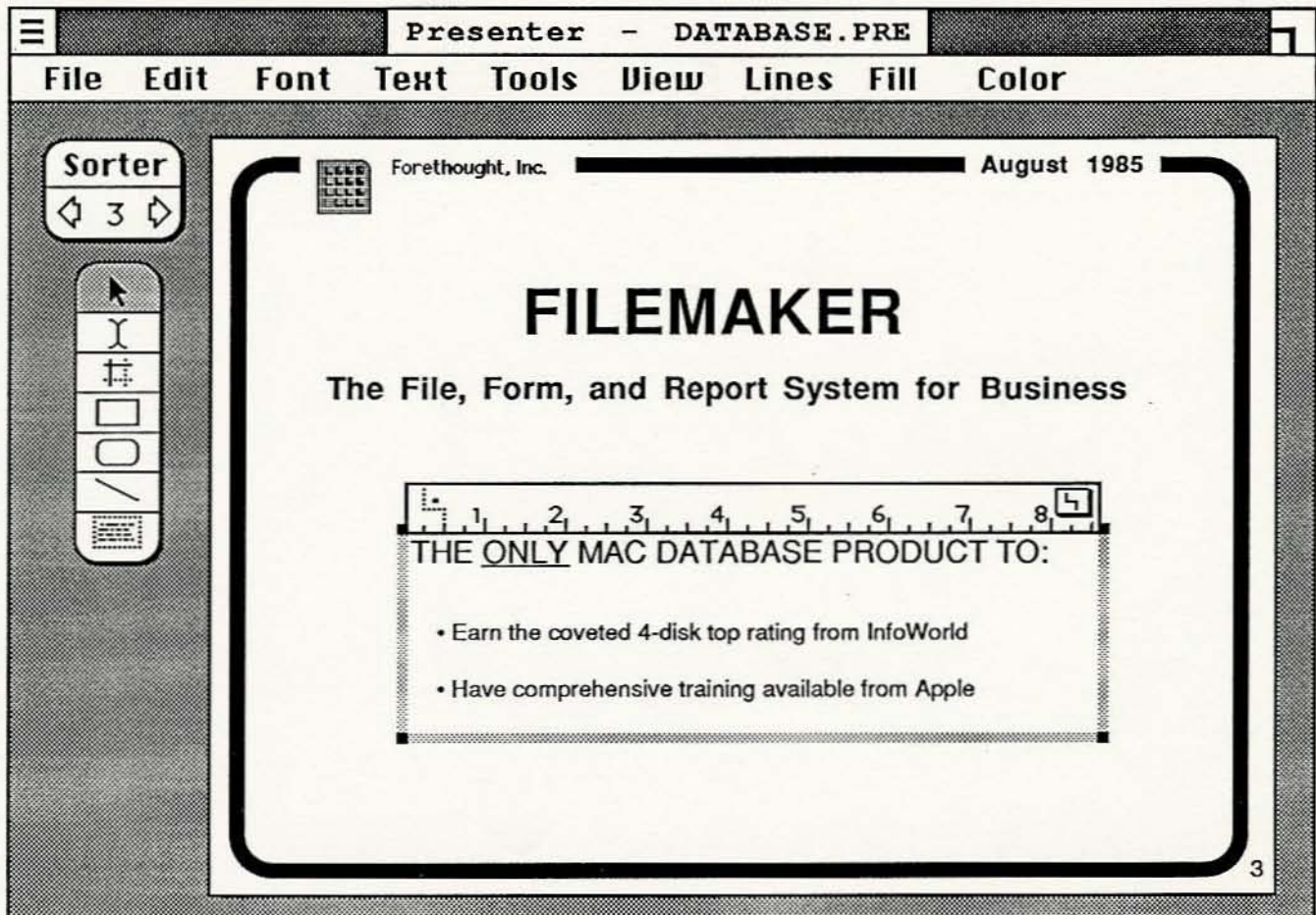
This is the title sorter, an alternative to the slide sorter. As in that view, slides may be selected, cut, and pasted to reorganize the presentation. The difference is that you work with the titles rather than miniature images.



This is the model slide for the presentation. Its features are duplicated on all the other slides so that borders and the like do not have to be copied onto every slide. The title text box, shown selected, may be set up with various properties (such as font) that will be the default for all other title boxes.



The View menu allows you to select "With Notes" as a viewing mode. This allows you to enter some notes with each slide that will be printed with the slide in "With Notes" printing. The slide shrinks to half page size (landscape slides go onto the top of a portrait page) and the remaining space contains a text box that can be filled with notes.



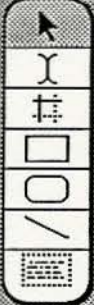
This window shows a selected text box with its indent ruler displayed. The first line of text is at the outermost outline level and has no indent. Subsequent lines are at the second level which is set up with a hanging indent starting at 1/4 inch. A bullet character (•) has been typed in the ruler for these lines.





Sorter

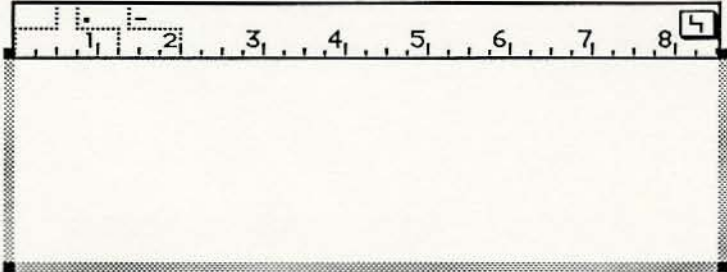
◁ 10 ▷

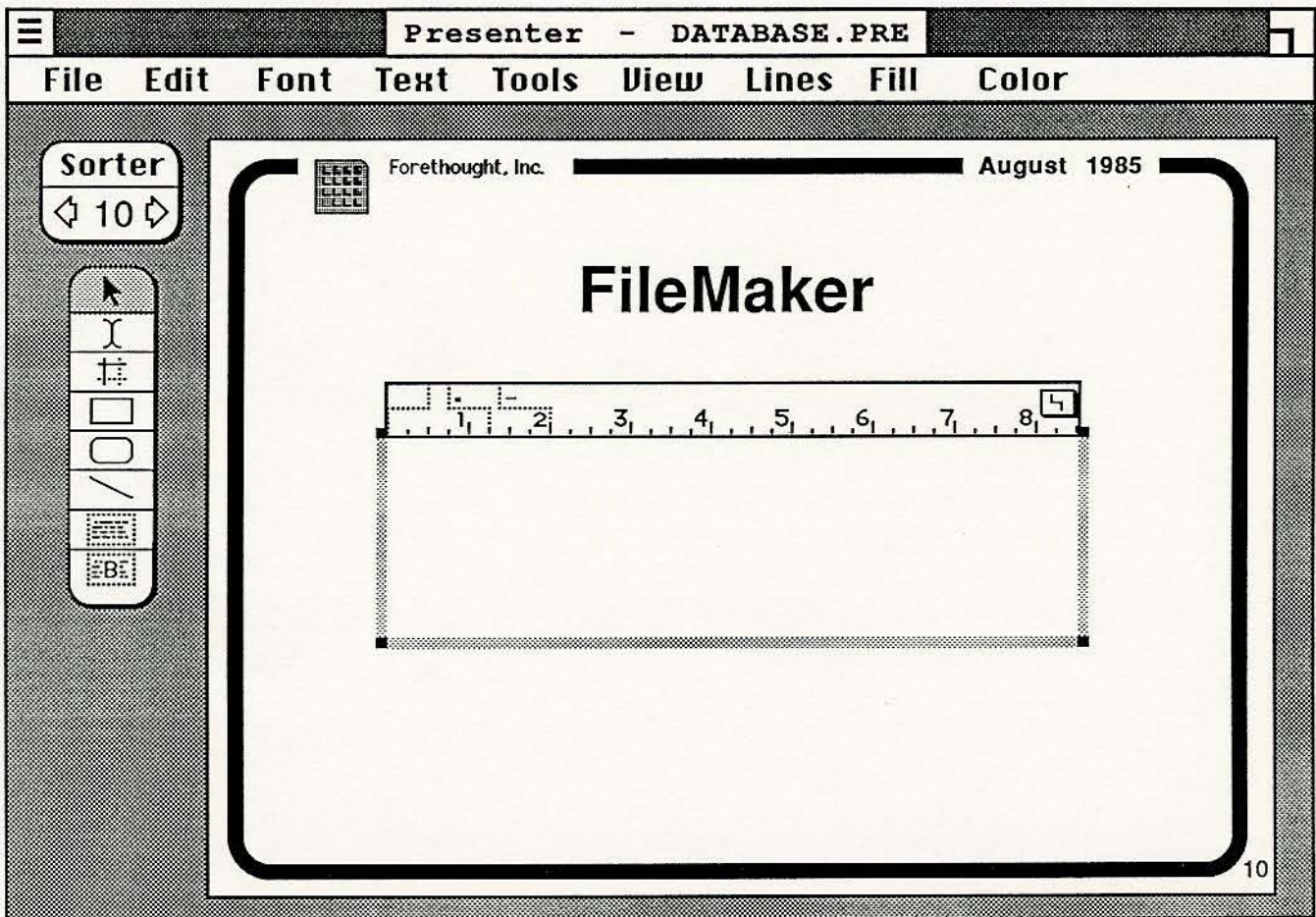


Forethought, Inc.

August 1985

# FileMaker





In this screen, the text box with the displayed settings has been turned into a custom tool that is added at the bottom of the tool box. Custom tools are identified with a letter — B in this case.

Drawing a with this new tool will produce a text box with the same ruler settings that you see here in the prototype. Double-clicking a custom tool produces a copy in the same size and the same position on the page as the prototype.

Presenter - DATABASE.PRE

File Edit Font Text Tools View Lines Fill Color

Sorter

◁ 7 ▷

Forethought, Inc. August 1985

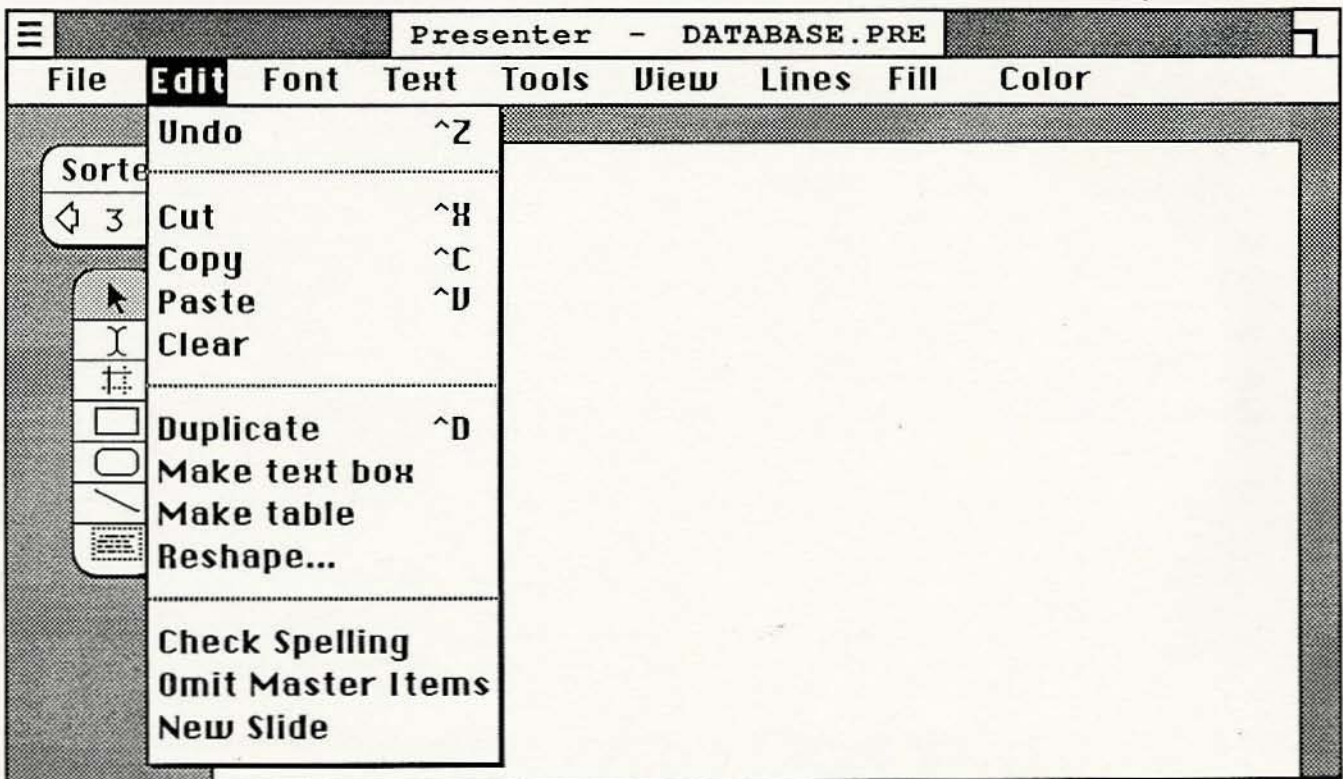
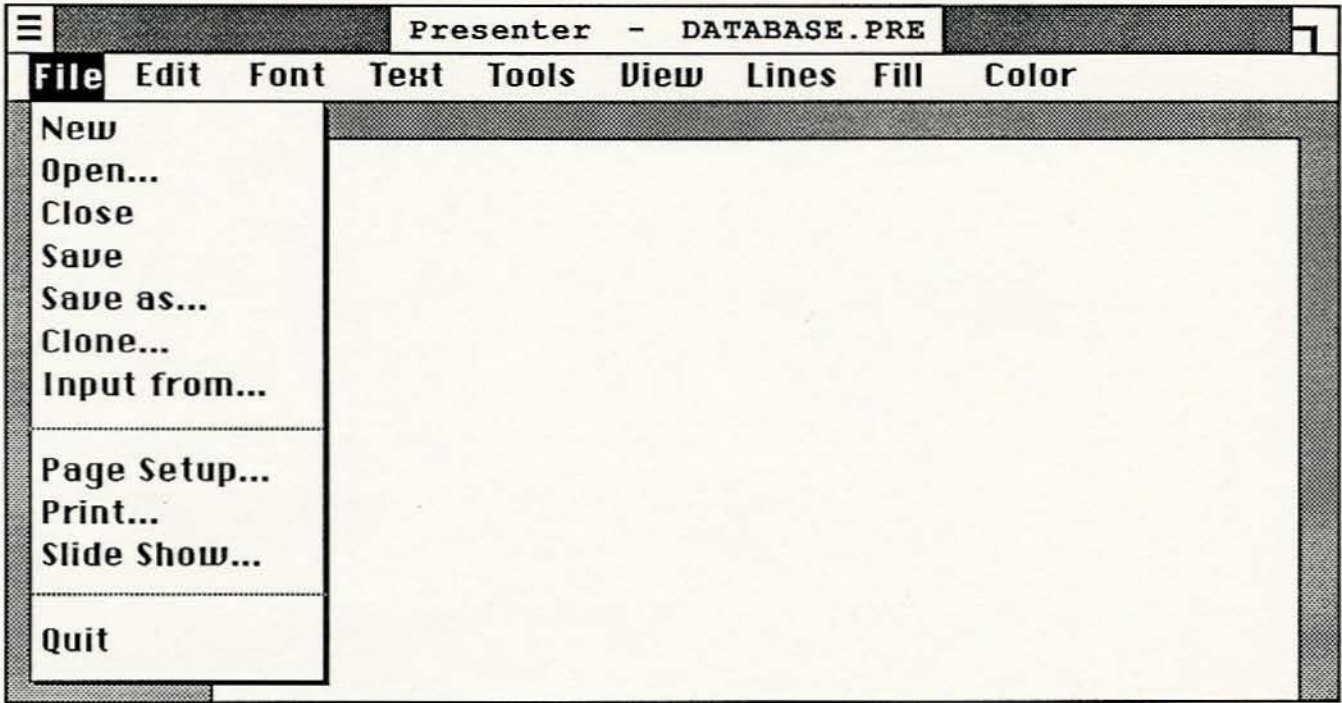
### Factfinder

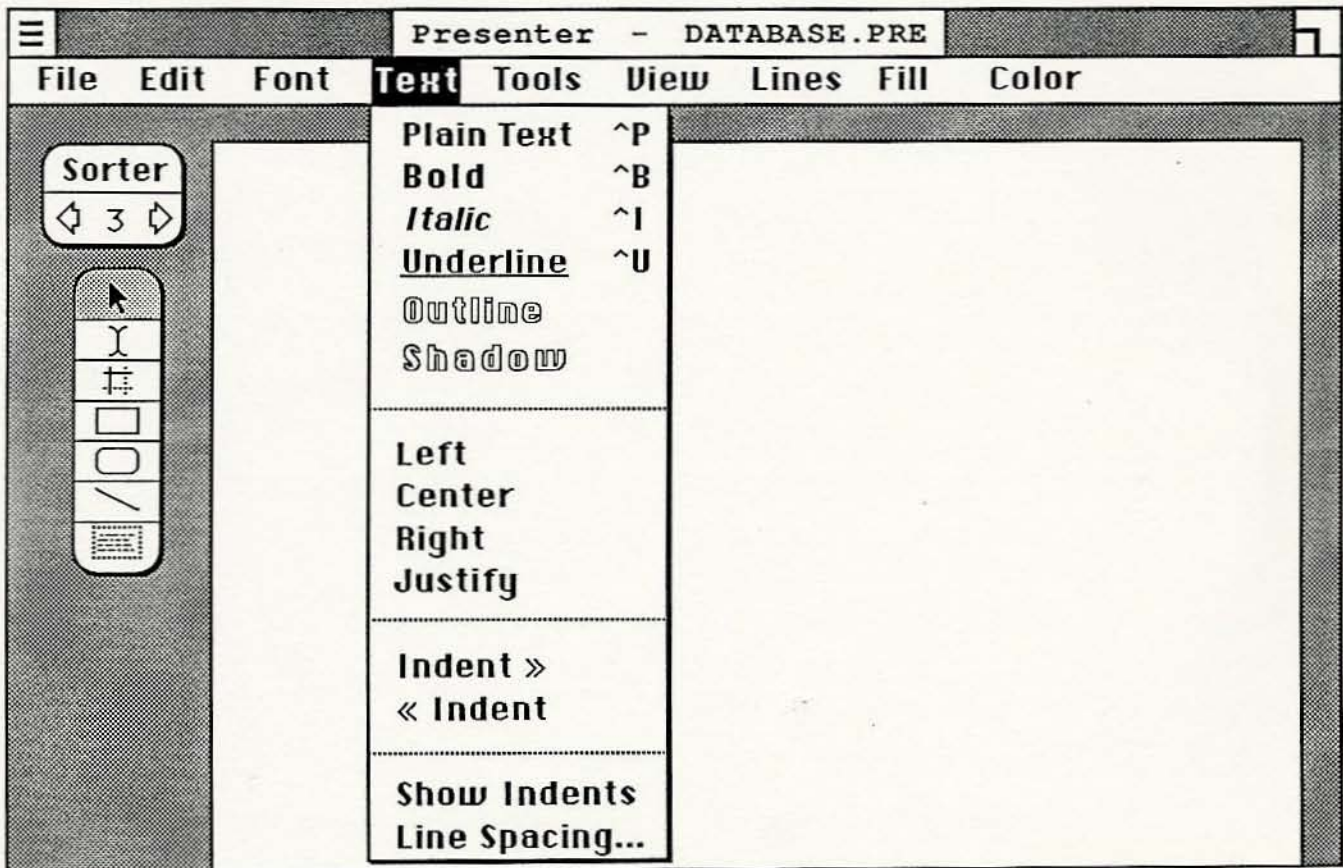
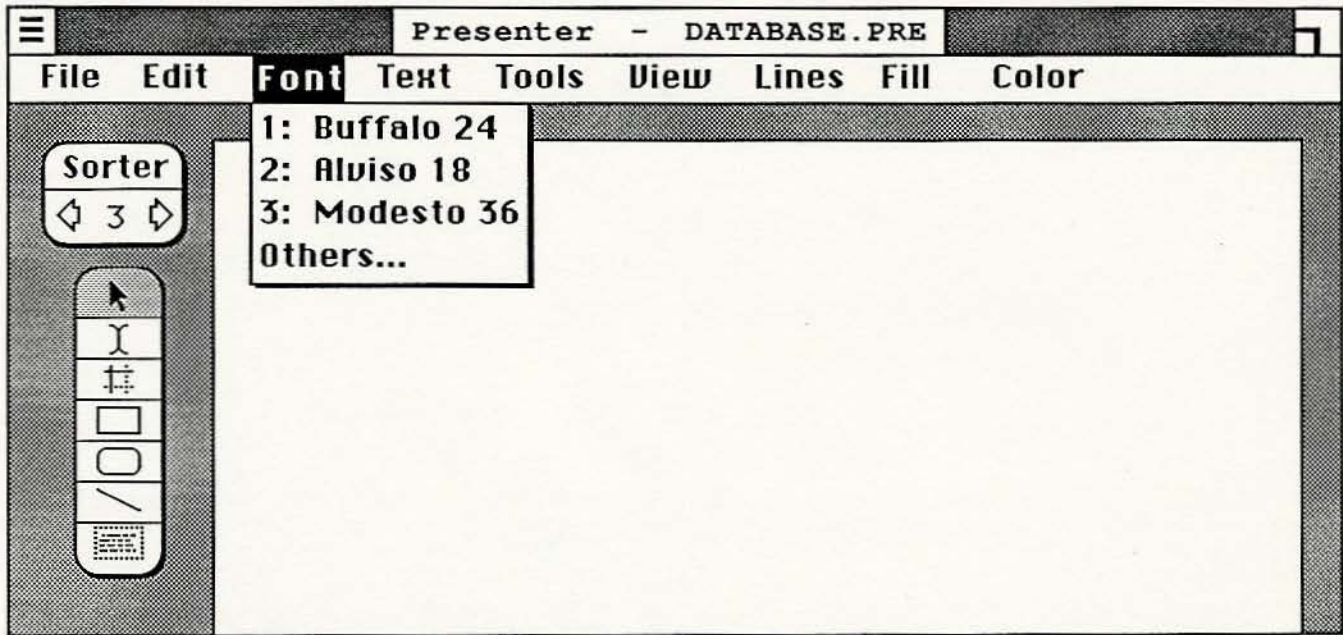
#### Planning Guide for Disk Storage Needs

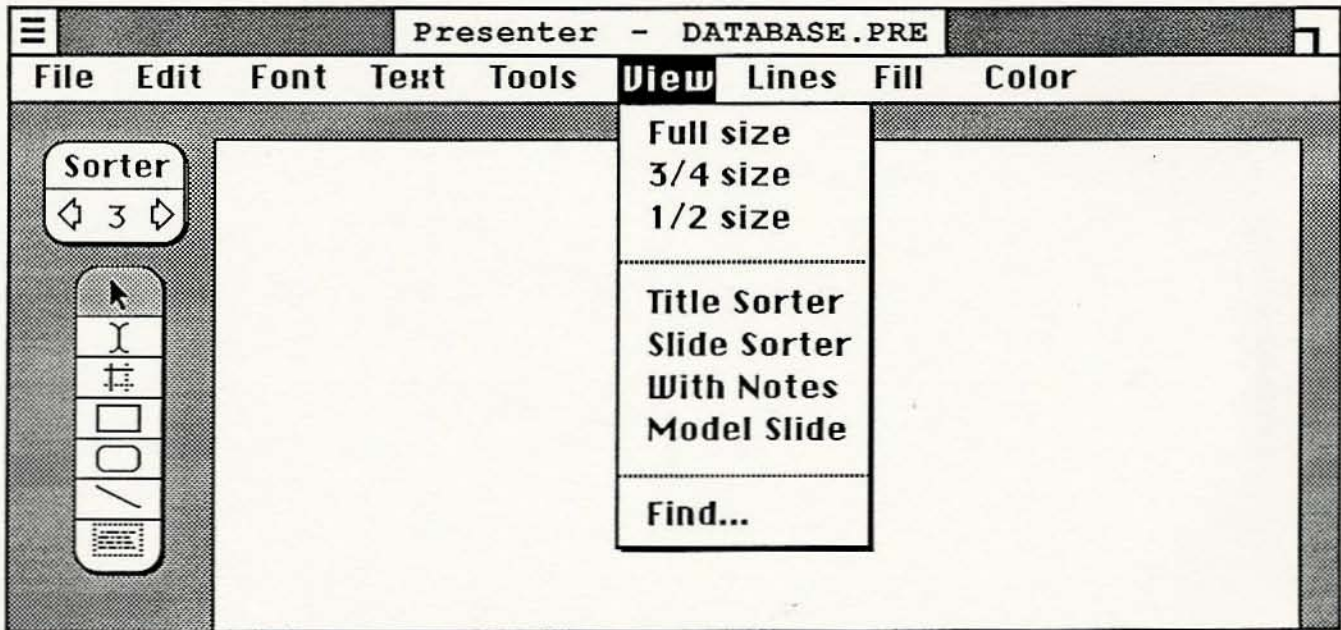
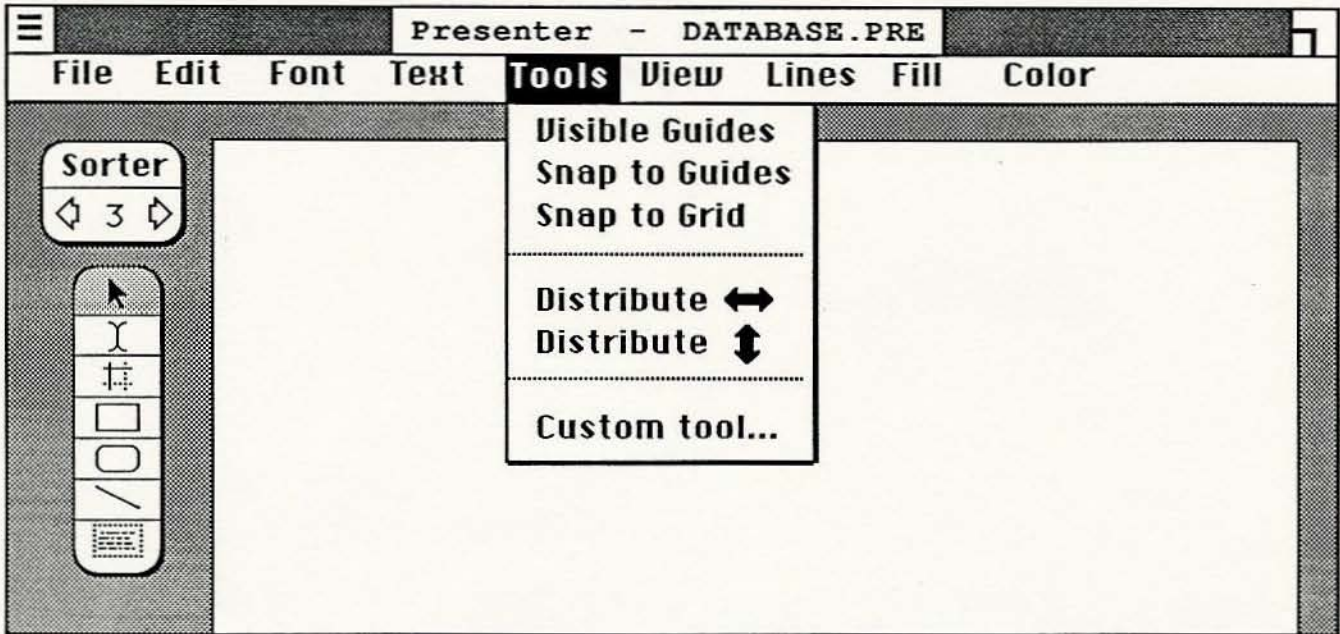
Factsheet Size	No. of Keys	Factsheets per Disk		
		400k	10M	
200 words	1/4 page	3 keys	300	3,400
400 words	1/2 page	5 keys	150	1,700
800 words	1 page	5 keys	80	900
2400 words	3 pages	8 keys	25	300

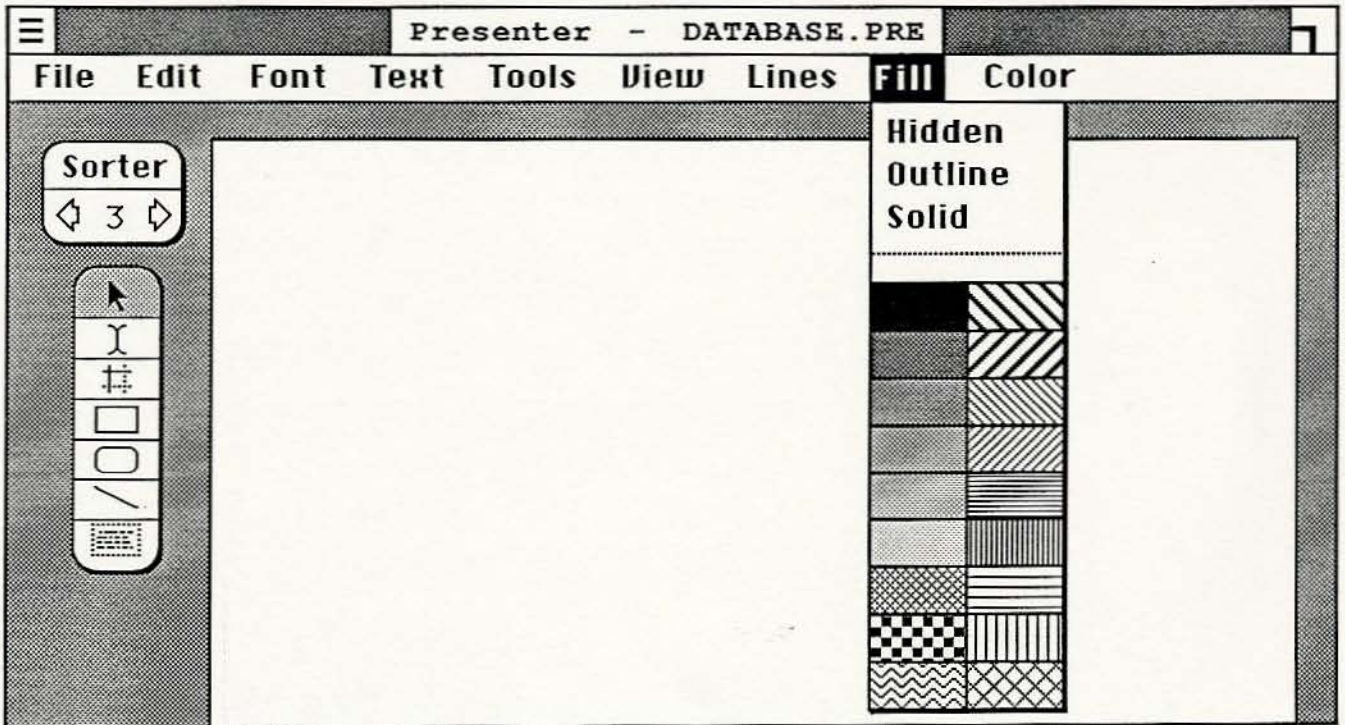
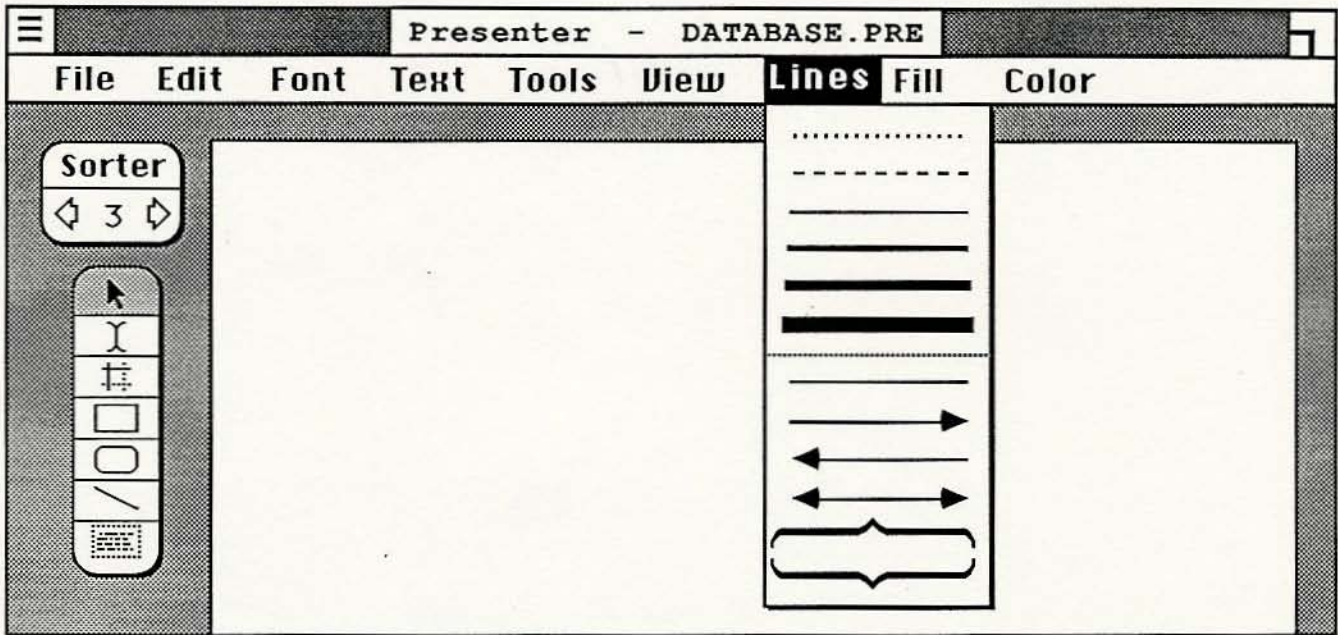
7

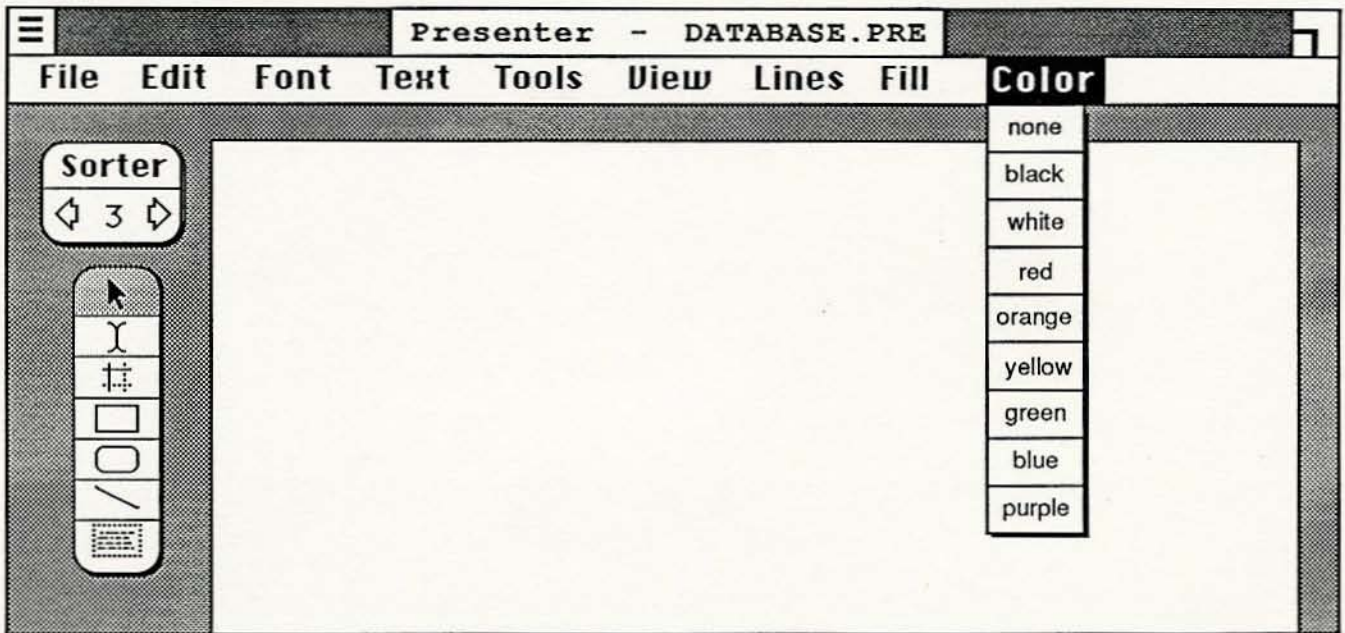
The Make Table command allows you to easily construct tables like the one in this screen shot. The large box is subdivided by the command and then each of the cells holds text. The ruling lines may be slid back and forth to change the sizes of rows and columns. Their width and color and visibility may be individually changed.











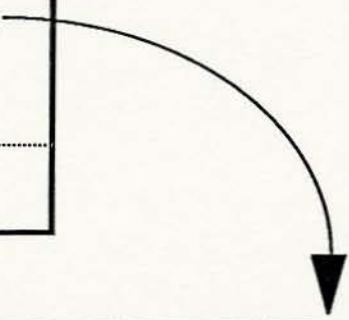


**File**

New  
Open...  
Close  
Save  
Save as...  
Clone...  
Input from...

Page Setup...  
Print...  
Slide Show...

Quit



**LaserWriter**

Paper:  US letter  A4 letter  
 Us legal  B5 letter

Reduce or Enlarge:  %

Slides:  Landscape  Portrait  
 3:4 Aspect Ratio  2:3 Aspect Ratio

Okay

Cancel

**File**

New  
Open...  
Close  
Save  
Save as...  
Clone...  
Input from...

Page Setup...  
Print...  
Slide Show...

Quit



**Print**

Copies:  Pages:  all  from:  to:

Paper feed:  Automatic  Manual

Layout:  Full sized slides  
 Slides with notes  
 2 slides per page  
 3 slides per page  
 6 slides per page

Okay

Cancel

**File**

New  
Open...  
Close  
Save  
Save as...  
Clone...  
Input from...

Page Setup...  
Print...  
Slide Show...

Quit

**Slide Show**

- Change slides with mouse button
- Change slides automatically  
every  seconds

Okay

Cancel

Show begins with current slide. Strike any key to end the show.

**Edit**

Undo	^Z
-----	
Cut	^X
Copy	^C
Paste	^V
Clear	
-----	
Duplicate	^D
Make text box	
Make table	
Reshape...	
-----	
Check Spelling	
Omit Master Items	
New Slide	

**Reshape**

Ellipse

Rectangle

Round corners, radius

**Font**

- 1: Buffalo 24
- 2: Alviso 18
- 3: Modesto 36
- Others...

**Typeface**

- Buffalo
- Chicago
- Alviso
- Monaco**
- Cairo
- Modesto

**Size**

- 12
- 18
- 24
- 36
- 48

22

**Default Style**

- Bold**
- Italic*
- Underline
- Outline**
- Shadow**

**Select Font Set**

Select Remove

**Current Font Selections**

- 1: Buffalo 24
- 2: Alviso 18
- 3: Modesto 36**
- 4:

Cancel Done

**Text**

Plain Text	^P
<b>Bold</b>	^B
<i>Italic</i>	^I
<u>Underline</u>	^U
Outline	
Shadow	
-----	
Left	
Center	
Right	
Justify	
-----	
Indent »	
« Indent	
-----	
Show Indents	
Line Spacing...	



**Text line spacing**           

For indentation level 

1	2	3	4	5	all
<input type="radio"/>	<input checked="" type="radio"/>	<input type="radio"/>	<input type="radio"/>	<input type="radio"/>	<input type="radio"/>

, set line spacing:

- within paragraphs (or list items):

- between paragraphs (or list items):

---

Before a sub-list:  use main list spacing.  
 use sub-list spacing.

**Tools**

Visible Guides  
Snap to Guides  
Snap to Grid

Distribute ↔  
Distribute ↕

Custom tool...



**Custom Tool**

Okay

Cancel

- Install selected objects as drawing tool.
- Remove installed tool.

Tool code letter:

**View**

Full size  
3/4 size  
1/2 size

Title Sorter  
Slide Sorter  
With Notes  
Model Slide

Find...



☰ Find

Find what:

Whole word

Find Next Cancel



**Color**

1: <input type="text"/>	9: <input type="text"/>
2: <input type="text"/>	10: <input type="text"/>
3: <input type="text"/>	11: <input type="text"/>
4: <input type="text"/>	12: <input type="text"/>
5: <input type="text"/>	13: <input type="text"/>
6: <input type="text"/>	14: <input type="text"/>
7: <input type="text"/>	15: <input type="text"/>
8: <input type="text"/>	16: <input type="text"/>

Others...



**Hue**      **Brightness**      **Color**

**Select Color Set**

1: <input type="text"/>	<input type="text"/>
2: <input type="text"/>	<input type="text"/>
3: <input type="text"/>	<input type="text"/>
4: <input type="text"/>	<input type="text"/>
5: <input type="text"/>	<input type="text"/>
6: <input type="text"/>	<input type="text"/>
7: <input type="text"/>	<input type="text"/>
8: <input type="text"/>	<input type="text"/>
9: <input type="text"/>	<input type="text"/>
10: <input type="text"/>	<input type="text"/>

**R**  **G**  **B**