

Borough

Winter 2009 Issue 41



Insight

25 **EPSOM**
Playhouse

years of great entertainment



Produced by Epsom & Ewell Borough Council for its residents
and delivered free of charge to households in the Borough

A service to help you



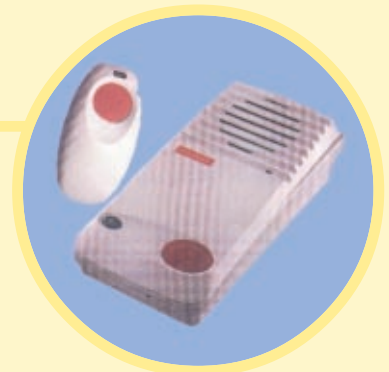
RouteCall

If you live in the Borough and have difficulty travelling or are over 60, you may qualify for membership of RouteCall, our convenient and reliable door-to-door bus service.

The services listed below have no age restriction and are available to those living in the Borough who may need additional help in their day-to-day lives.

Community Alarm

Help at the touch of a button - making you feel safe in your own home.



Meals on Wheels

Excellent quality hot and frozen food delivered to your door.

Shopping Service

Do you have difficulties in shopping for yourself? If so we could do your shopping for you.



If you think we can help you or someone you know in any of these areas please do not hesitate to contact us on 01372 732000.



The Borough of Epsom & Ewell is twinned with Chantilly, France. For further information on The Epsom & Ewell Town Twinning Association please visit the website: www.epsomtwinning.com

Mayor's message

from Councillor Alan Winkworth
Mayor of Epsom & Ewell 2008/09

Contact Epsom & Ewell Borough Council

Tel: 01372 732000 Email: contactus@epsom-ewell.gov.uk
Out of hours emergency number: 01372 732555

Borough Insight

is produced by Epsom & Ewell Borough Council four times a year for residents. If you have any queries on its contents, please contact Midge McCall, Editor, Borough Insight, Epsom & Ewell Borough Council, Town Hall, The Parade, Epsom, Surrey KT18 5BY
Tel: 01372 732112 Email: mmccall@epsom-ewell.gov.uk

Written and designed

by em communications ltd,
19 Church Road, Epsom,
Surrey KT17 4DZ
Tel: 01372 802718
Email: mary@emcomm.co.uk

If you know someone in the Borough who would like to receive Borough Insight, please let us know their address including postcode. Telephone 01372 802718 or email mary@emcomm.co.uk



Please read and recycle this copy of Borough Insight.



Since taking office the Mayoress and I have attended well over 100 functions. Recent highlights include Horseman's Sunday up on Epsom Downs attended by Virginia McKenna and celebrating the handover of the Olympic flag from Beijing to the United Kingdom at an official ceremony in Epsom.

We have both met many voluntary organisations and have been impressed by the number of people willing to give up their time in order to help others in the Borough. Without these organisations and those people willing to run them, Epsom & Ewell would be a much poorer place in which to live. I

would like to encourage you if you feel you can give any time to help at any one of over 100 organisations. I know they would be delighted to hear from you as additional help is always needed.

Finally the Mayoress and I are looking forward to meeting as many of you as possible during the remainder of my Mayoral year.

New Interim Chief Executive announced for Epsom & Ewell Borough Council

Epsom & Ewell Borough Council is pleased to announce the appointment of Frances Rutter as Interim Chief Executive following the recent illness of the Council's current Chief Executive, David Smith.

Frances comes to Epsom & Ewell with a wealth of experience, including a strong legal background, and is currently Deputy Chief Executive at Elmbridge Borough Council. She joined Epsom & Ewell Borough Council on Monday 15 December 2008.

A large print version of Borough Insight is now available. If you or someone you know has impaired sight and could benefit from this service please call us on 01372 732000 for a copy or visit our website www.epsom-ewell.gov.uk.

Contents



Cover: Trevor Mitchell, Epsom Playhouse Manager

• Epsom & Ewell wins national award	2	• Full of Life	7	• Calling all young sporting stars	13
• Customer Service Week	3	• Recycling Feature	8-9	• Your Common needs you!	14
• Herald of Spring 2009	4	• Investigating nuisance complaints	10	• Local health services update	15
• Happy Birthday Epsom Playhouse	5	• Search for your family at Epsom Cemetery	11	• What's On/Who's Who	16
• New campaign to control noise levels	6	• Young people support	12		
		• Youth Leisure Day	12		



Epsom & Ewell Borough Council wins national award



Epsom & Ewell Borough Council is the fifth best Council to work for in the UK and Northern Ireland and the best in the South East and Surrey according to the The Times “25 Best Councils to Work For” awards.

A total of 95 Councils entered the competition and 48,099 employees from across the country were canvassed. Eight staff joined Chief Executive David Smith and Councillor Sandy Sanger at the black tie event, hosted by BBC News and television presenter Bill Turnbull, which was held at the Cumberland Hotel in London.

Factors by which the councils were judged included:

- **Leadership:** how employees feel about the head of the company and senior managers.
- **Wellbeing:** how staff feel about stress, pressure and the balance between their work and home life.
- **My Manager:** people’s feelings towards their immediate boss and their day-to-day managers.
- **My Team:** people’s feelings about their immediate colleagues.
- **Fair Deal:** how happy the workforce is with pay and benefits.
- **Giving Something Back:** how much staff think their companies put back into society, and into environmental protection.
- **My Company:** feelings about the company people work for as opposed to the people they work with.
- **Personal Growth:** whether staff feel challenged by their job, their skills are being used and if there is scope for advancement.

Successful bid brings £1.78m funding to Epsom & Ewell

Epsom & Ewell has become the first Borough in Surrey to benefit from Department of Health funding enabling the development of an innovative new ‘Extra Care’ housing scheme. A grant of £1.78m was awarded to Rosebery Housing Association whose successful bid was in competition with 61 other schemes.

A multi-agency steering group including Rosebery Housing Association, Epsom & Ewell Borough Council, Surrey County Council and the Mid Surrey Joint (Health) Commissioning Board plan to use the funds to redevelop the existing West Hill Court sheltered housing site. 29 self contained affordable rental units and 10 shared ownership properties will be built specifically for elderly residents of the Borough to purchase, the first of their kind in Epsom & Ewell.

The scheme will offer personalised care and support to residents with disabilities, frailty or health needs who do not need or want to move to a residential or nursing care home. A care team will be on site 24/7 to assist residents living independently in their own flats and will offer an assessment and rehabilitation service for individuals referred from the wider community.

Planning permission for the proposed re-development of the site will now be applied for. If granted, West Hill Court will become the second Extra Care housing scheme in the Borough after the popular and highly sought after John Gale Court in Ewell.

Are you aged between 18 and 34?

Do you live in Epsom & Ewell?

Would you like to let the Council know your views?

If you or anyone you know can answer yes to these questions we would like to hear from you.



The Epsom & Ewell Borough Council FEEDBACK Citizens Panel is a group of around 1,200 residents who regularly take part in surveys and focus groups about issues in the Borough.



Members of the FEEDBACK panel participate in up to five questionnaires each year. The questionnaires are sent directly to members’ homes and returned to us in a pre paid envelope.



Each time a member completes a questionnaire they are rewarded with a high street shopping voucher.

If you are interested please email: CandC@epsom-ewell.gov.uk or call the Consultation & Communication Team on 01372 732000.

All residents aged 18 years and over are welcome to join the panel, however we are specifically looking for 18-34 year olds to boost representation of this age group.

Customer Service Week

Recently for the first time Epsom & Ewell Borough Council took part in a national 'Customer Service Week' event which involved senior managers, directors and Councillor Eber Kington learning the roles of various staff members who make up the Council.

Senior managers worked alongside staff who deal with the general public on a daily basis in our Customer Services section at the Town Hall, Bourne Hall and The Ebbisham Centre. One also joined a team of refuse collectors, another acted as a parking attendant, one went on site with a building control officer, another became a temporary assistant at a social centre and one worked an evening shift front-of-house at the Epsom Playhouse. All returned from their experiences stating their admiration for the staff they had worked with and a better appreciation of the work involved.

The national event aims to raise the profile of customer-facing teams in organisations around the country and Customer Service Week gave senior staff members and directors the opportunity to experience first hand the challenges faced by staff and customers in a variety of different roles.



Changes to planning controls

Significant changes to planning controls came into force on 1 October 2008. These cover a wide range of works which can be undertaken to extend or alter a residential property or to carry out building work in the garden. Some of the new allowances are more generous and householders can undertake certain works without the need for planning permission. Others are more restrictive.

Rear extensions no longer have volume limitations but are restricted instead by height and projection from the original rear wall. Roof extensions are still limited by volume but there is substantial scope for roof extensions depending upon the type of house.

The new rules relating specifically to the paving of front gardens say you will need planning permission unless the area to be paved is less than five square metres, where either porous materials are used or provision is made to direct any run-off to an area that allows water to drain away naturally within the garden area, for example, a garden border. This applies both to new surfaces and to the repair and replacement of an existing surface. Guidance on the surfacing of front gardens can be found at: www.communities.gov.uk/publications/planningandbuilding/pavingfrontgardens

If you have queries relating to the new rules you can seek local advice from us by e-mailing: planning@epsom-ewell.gov.uk or on 01372 732000.

This article is not meant to give you a detailed guide to whether or not you need permission but rather draw attention to the changes and direct you to sources of reliable advice.



Olympic flag flies high in Epsom & Ewell

More than 50 people in Epsom celebrated the handover of the Olympic Flag from Beijing to London in August. In partnership with GLL Ltd and the Rainbow Leisure Centre, free sports as well as Olympic themed arts and craft activities for young people were provided.

A Chinese Dragon Dance followed the activities, performed by the Nam Yang Pugilistic Association to highlight the handover of the flag from China to the UK. The Mayor and Mayoress of Epsom & Ewell led a festive procession from the Rainbow Centre to the Town Hall. At the Town Hall, a specially designed Olympic flag was raised to coincide with the Mayor of London receiving the official Olympic Flag in Beijing.



Herald of Spring 2009

The annual Herald of Spring will take on a Victorian fairground theme this year when the event is held at Bourne Hall on Saturday 21 and Sunday 22 February.

Visitors can enjoy "all the fun of the fair" when Bourne Hall is changed into a Victorian fairground complete with barrel organ, punch and judy, clowns, strongmen and daredevil artists wandering through the crowds.

Bourne Hall's annual transformation into a floral feast for the eyes will be themed around the brightly coloured entertainment

of more than 100 years ago, complete with the sights and atmosphere of days gone by.

'All the Fun of the Fair' opens on Saturday 21 February from 10am until 5pm and Sunday 22 February from 11am until 5pm with early access for disabled visitors from 10am on Sunday. There will be craft and food stalls along with garden stocks and supplies. Admission is £3 for adults, £2 for OAPs and free for children under 12. For further details please ring Bourne Hall on 020 8393 9571.

£1,000 fund awarded to project for young people



A local youth project received a £1,000 boost as part of the High Sheriff Youth Awards scheme. As well as this grant from the High Sheriff, the pilot scheme was funded by Epsom & Ewell Borough Council and Epsom & Ewell Crime and Disorder Reduction Partnership to launch the initial three-month project which provided young people living on the Longmead with positive and engaging activities. The High Sheriff of Surrey, Sally Varah, presented the award to young people, staff and volunteers involved in Longmeadz Kickin at the multi-use games area (MUGA) in Sefton Road. The Award recognises the hard work and dedication undertaken by a number of agencies to encourage young people from the area to spend their time productively, learning new skills.

Local Health Services Update

The Council has continued its campaign to get the best local health services possible for residents. Last year, the Social Committee set out clearly what the Council will do and what it will support in regard to specific hospital services. The full statement can be found on the website www.epsom-ewell.gov.uk/community_and_living_page.

The charter states the Council will:

- **Campaign** for high quality and locally accessible NHS Services
- **Consult** on local opinion and **Champion** local views on service provision
- **Challenge** unfair or unjustified decisions
- **Co-operate** with partners to achieve the best possible results

EEBC has joined with neighbouring authorities; Mole Valley, Reigate & Banstead and Elmbridge to provide a stronger voice for residents on local health changes. One of their first decisions was to set up public meetings where the Chief Executive for the Epsom & St Helier Hospital Trust, Surrey PCT and the local GPs will explain the future for services at Epsom Hospital under the *Assuring Access* programme. These meetings will be held once Surrey PCT announces its plans for Epsom and the Hospital Trust has a chance to see if it can deliver them.

In November, the Council opposed in the strongest terms to NHS consultation proposals to close the Langley Wing at Epsom Hospital. It raised several concerns including the travel and access problems for both patients and carers if mental health services were moved to another hospital. The response was copied to Surrey PCT and also sent to Surrey County Council's Health Scrutiny Committee.



Happy Birthday

EPSOM
25 Playhouse
 years of great entertainment

The Epsom Playhouse celebrates its 25th anniversary in January 2009. Recently described as “one of the most popular multi-entertainment venues in the region”, the Playhouse has gone from strength to strength under the helm of Theatre Manager Trevor Mitchell who himself is celebrating 15 years at the theatre.

Many local people will be familiar with the Playhouse, either as audience members or by performing on stage, but did you know:

- 1 Only 11 paid staff run the Epsom Playhouse including the stage crew.
- 2 40 volunteers give their services to the Playhouse in order for it to function.
- 3 The Playhouse runs a very successful fortnightly Jazz Club.
- 4 Victoria Beckham performed at the Epsom Playhouse during her student days.
- 5 The Playhouse Bar is said to be haunted by a ghost who drinks lime cordial.
- 6 The theatre is cleaned at 4am every morning.
- 7 Trevor Mitchell was voted Manager of the Year in 2001 by Encore Magazine.
- 8 High School Musical had its European Stage Premier at the Playhouse.
- 9 Many top comedians try out material at the Playhouse prior to their tours and TV shows including Lee Evans, Jack Dee, Paul Merton and Lenny Henry.
- 10 Trevor Mitchell is the theatre’s longest serving manager.
- 11 The backstage walls are covered in good luck lipstick kisses left there by thousands of performers.
- 12 The Playhouse runs a very successful pre-school every weekday during term time.
- 13 The Playhouse stage has been replaced twice in the last 25 years.



- 14 The Playhouse hosts the Surrey Dance Festival each year.
- 15 The sculpture outside the building is on permanent loan from the internationally renowned sculptor Tom Merrifield.
- 16 The Playhouse Technical Department use 37 miles of Gaffa tape each year.
- 17 The Playhouse shows are booked into the theatre’s calendar two years in advance.
- 18 The Playhouse hosts The Youth Theatre Workshop twice a week.
- 19 The Playhouse runs a very successful work experience programme for youngsters in the Borough.
- 20 The 2003 production of Peter Pan broke all box office records playing to 97% attendance.
- 21 The box office has sold over three million tickets since the theatre first opened.
- 22 The former Playhouse Technical Manager was voted Technician of the Year in 2003 by Encore Magazine.
- 23 The venue was nominated for the Ease of Access Award by British Gas in 2000.
- 24 The Playhouse signs and describes the Christmas Pantomime and other selected performances for patrons who are hearing or vision-impaired.
- 25 There are no steps from the front door to the foyer, to disabled seats in the auditorium, or to the bar and bistro.

For a free copy of the current season brochure please ring the Box Office on 01372 742555 or visit the website: www.epsomplayhouse.co.uk

New campaign to control noise levels in entertainment venues

Epsom & Ewell Borough Council has launched a campaign to promote new measures to control noise levels in pubs, bars, clubs and concert venues to help protect the health and hearing of staff and customers. Exposure to noise can cause damage to hearing and result in noise induced hearing loss. It is estimated that excessive noise in the workplace has caused around 500,000 people living in the UK to suffer deafness or other hearing difficulties.

All entertainment premises in the Borough have been notified about the changes and given appropriate guidance. Officers from our Environmental Health team will be visiting some venues to advise managers about their responsibilities and to make sure they are complying with the new regulations.

The Environmental Health team has also suggested some top tips to make sure you protect your hearing.

- **Try and reduce your time in a place with loud music to as short as you can**
- Wear simple in-ear devices which filter sound but do not block it completely at gigs and in nightclubs
- **Take regular breaks from areas with loud noise to allow your ears a chance to recover**
- Stand away from loud speakers
- **If you are exposed to loud noise in the workplace, make sure you wear hearing protection**
- If you are worried about noise levels, either inside or outside of work, talk to a manager, contact the Health & Safety Executive or the local authority
- **Do not have the volume of your personal music player turned up too loudly in noisy places such as on trains or the underground, instead use noise cancelling headphones**
- If you have problems with your hearing or ears, ask your GP for advice



For more information about the Control of Noise at Work Regulations 2005 law, or for more advice, contact the Council on 01372 732000 or visit www.epsom-ewell.gov.uk

Ring the changes

Surrey County Council's telephone number has changed to 03456 009 009. The following new numbers will allow callers to go directly to the service they need.

Libraries	0300 200 1001
Registration	0300 200 1002
Roads and transport	0300 200 1003
Schools	0300 200 1004
Adult social care	0300 200 1005
Children social care	0300 200 1006
Jobs	0300 200 1007

Want to know the full story?

Did you know that you can read the full story about Council issues on our website: www.epsom-ewell.gov.uk? We post all press releases and information here as soon as they are published so everyone can read the full facts and background to Council stories for themselves.

Calendar of Meetings January-April 2009

All Council meetings are held at the Town Hall, Epsom and start at 7.30pm unless otherwise stated. You are able to speak at certain meetings - advanced notice must be given.

- **Council** - 17 February (budget meeting: Council Tax set)
- **Scrutiny Committee** - 4 February; 15 April
- **Standards Committee** - 19 January; 9 March
- **Strategy and Resources Committee** - 27 January (budget considered at this meeting); 31 March
- **Environment Committee** - 21 January (budget considered at this meeting); 25 March
- **Leisure Committee** - 26 January (budget considered at this meeting); 30 March
- **Social Committee** - 22 January (budget considered at this meeting); 26 March
- **Planning Committee** - 15 January; 12 February; 12 March and 16 April
- **Licensing Hearing Sub Committee** - Meetings to be arranged as required
- **Planning Policy Sub-Committee** - 5 February
- **Human Resources Panel** - 19 February
- **Financial Policy Panel** - 3 February
- **Nonsuch (JMC) Joint Management Committee** - 22 January at 10am, Nonsuch Mansion House
- **Epsom & Walton Downs Conservators** - Generally January, April, July & October at 6pm

Agenda papers will be available on the Council's website (www.epsom-ewell.gov.uk) five clear working days before a meeting. A limited number of hard copies will be available at the meetings. For further information regarding any of the Council's committees or the opportunity to speak, please ring 01372 732000, and ask to speak to Committee Services, quoting the Committee or subject area you are interested in.



Full of Life

Rosebery Housing Association and Epsom & Ewell Borough Council organised the 'Full of Life' event at Norman Colyer Court and Longmead Social Centre in October

to celebrate the huge contribution older people make to the community.

Over 150 people enjoyed free activities at the local venues which included line dancing, yoga, gentle exercise, Tai Chi, art exhibition, aromatherapy, a quiz, painting as well as a history of Epsom and the Second World War.

The event provided an opportunity for residents in Epsom & Ewell to meet new friends and try out new activities. Many residents came from other sheltered schemes in and around the area. The Government's 'Full of Life' initiative is intended to challenge outdated stereotypes by promoting positive images of older, yet inspiring, people who see old age as an opportunity to take on new challenges.

Council approves Epsom Downs concert proposals

This autumn Epsom & Ewell Borough Councillors agreed to allow a two-day music concert, one day pop and the second classical, to take place on 13 and 14 June 2009 on Epsom Downs. Epsom and Walton Downs Conservators agreed to allow the concert, organised by All the Worlds, to take place following detailed consideration of representations for and against the plans that were submitted by local residents. The Conservators imposed a number of conditions covering such issues as reinstatement of the Downs, noise, traffic, parking and security.



Michael is pictured here with Denis Gilbert, Henry Chilton and John Cheetham

Fit as a Fiddle

A new 10 week initiative, Fit as a Fiddle, was launched by Age Concern in October to offer older men the opportunity to learn about healthy eating and cookery.

Funded by the Lottery, the scheme encourages older people, in particular older men, to remain fit and develop a sense of wellbeing. Age Concern volunteer Michael Godliman co-ordinated the course in partnership with Epsom & Ewell Borough Council and as a result several more people have since joined the Longmead Social Centre in Sefton Road.

Demonstrations and practical workshops showed the men how to make a range of nutritious and low cost meals. One of the men, who admitted that when his wife died he did not even know how to open the oven door, echoed the sentiments of others. He said: "This course is just what I needed. We have not only learned some cooking skills but have also made new friends."

Virginia McKenna special guest at Horseman's Sunday

Born Free founder Virginia McKenna was the special guest of honour at this year's 60th anniversary celebrations of the Horseman's Sunday at Epsom Downs on Sunday 28 September.

More than 100 horses took centre stage at the annual event. Many visitors brought their pets to take part in a unique pets parade, which proved to be an extremely popular addition to the annual event.



Epsom & Ewell Borough Council's Mayor, Councillor Alan Winkworth and his wife Vanessa led the parade along with Virginia in a horse-drawn coach while Rector David Wotton blessed all the animals present on the day.

The event is sponsored annually by local organisations National Counties Building Society, the Ashley Centre, Epsom Racecourse and South Hatch Restaurant.

Photos by Mike Sampson

YOUR NEW RECYCLING SERVICES

How we will help you to recycle more

During 2009 we will introduce new kerbside recycling services. We will collect food waste, cardboard and plastic bottles separately from your home for recycling.

You will then be able to recycle 50-60% of your waste.

How the service will work

- Your collection day will not change.
- Your separate weekly collection of paper, glass, cans, household batteries and textiles will not change.
- If you are a subscriber, your fortnightly garden waste service will not change.

The additional services are:

- A separate weekly collection of food waste.
- A separate fortnightly collection of cardboard and plastic bottles.

There should be very little left in your green wheelie bin. We will collect this fortnightly, which helps keep costs down.

Children's disposable nappies will continue to be collected in your general household bin fortnightly. If you want children's disposable nappies to be collected on a weekly basis, please register your interest with us in advance.

Collection – Week 1

FOOD WASTE

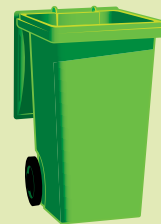
NOW RECYCLED



What goes in the food waste bin?

Almost any food waste, cooked or uncooked. But no liquids or packaging.

GENERAL RUBBISH



What goes in the rubbish bin?

Household waste that cannot be recycled using the other services.

KERBSIDE BAG & BOX

What goes in the kerbside bag and box?



The blue bag is for paper, which can include white envelopes and glossy magazines and brochures.

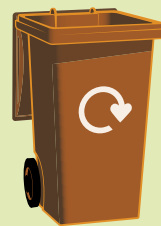


The green box takes glass, cans and household batteries (place household batteries in a sealed bag).

Leave your clothing, textiles and shoes in a closed, labelled bin bag next to the rest of your recycling.

GARDEN WASTE

SUBSCRIPTION SERVICE



What goes in the garden waste bin?

Organic waste from your garden, such as grass cuttings, prunings, flowers and twigs, but no food waste.

Collection – Week 2

FOOD WASTE

NOW RECYCLED

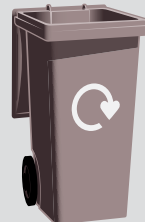


What goes in the food waste bin?

Almost any food waste, cooked or uncooked. But no liquids or packaging.

CARDBOARD AND PLASTIC

NOW RECYCLED



What goes in the cardboard and plastic bin?

Plastic bottles, cardboard boxes, non-white paper and card.

KERBSIDE BAG & BOX

What goes in the kerbside bag and box?



The blue bag is for paper, which can include white envelopes and glossy magazines and brochures.



The green box takes glass, cans and household batteries (place household batteries in a sealed bag). Leave your clothing, textiles and shoes in a closed, labelled bin bag next to the rest of your recycling.

When will the new services start?

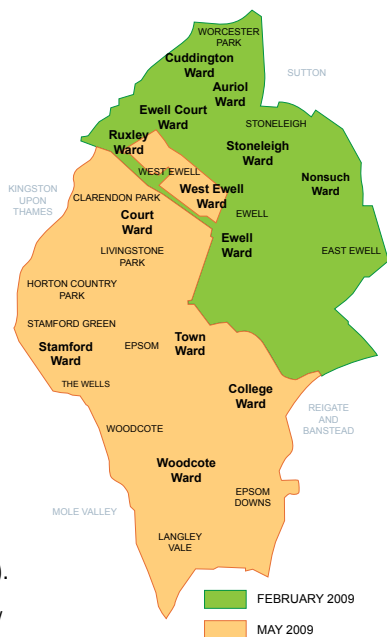
If you live in the north or north east of the Borough the new service will start in February 2009 (see map).

If you live in the south or south-west of the Borough the new service will start in May 2009 (see map).

If you live in a property with communal waste storage (such as a flat) your new service will not start before September 2009.

You can confirm when your service will start and whether you are in the "flats phase" by visiting our website www.epsom-ewell.gov.uk

Or you can simply wait to hear from us.



What will happen next?

Shortly before the start of the new service in your area we will deliver to you:

- **A three quarter size grey wheelie bin for your plastic bottles and cardboard.**
- **A small secure bin around 40cm high for your food waste.**
- **A kitchen caddy, which you can use to store food waste before you add it to your main food waste bin.**

Included with the new bins will be a calendar and detailed guide to your recycling and waste collection. It will tell you what can be put in each bin and when it will be collected.

If you live in a property with communal waste storage, we will contact you before the new service is introduced to explain how the new arrangements will apply to you.

Why are we making these changes?

You told us that cost effective recycling is a priority.

You already recycle around 30% of your waste. 75% of households use our existing kerbside collections to recycle paper, glass, cans and clothing. 30% of households subscribe to our garden waste recycling service.

More recycling reduces the amount of waste sent to landfill. This is important because waste sent to landfill generates powerful greenhouse gases which contribute to global warming.

Therefore if we do not recycle more, the environment will suffer.

Councils must pay a "landfill tax" for every tonne of waste sent to landfill. The Government is increasing this tax substantially. If we do nothing, the cost would be nearly £1m per year by 2011. Potentially, fines for landfilling too much biodegradable waste such as food or garden waste could add a further £1m a year.

Therefore if we do not recycle more, our residents will very likely have to pay heavily through increased Council Tax.

How you have helped shape the new services

- **1,239 residents completed the questionnaire in the summer edition of Borough Insight which was distributed to households in the Borough.**
- **940 members of the Citizens Panel completed a questionnaire.**
- **Around 3,000 people visited the 22 roadshows held to explain the Council's proposals.**

You told us that you already recycle.

More than 80% of people who returned the Citizens Panel and Borough Insight questionnaires already recycle newspaper, glass and cans.

You told us more kerbside recycling services would most likely encourage you to recycle more.

This is what we will provide.

You said you wanted to recycle plastic and cardboard.

The new services will enable you to recycle plastic bottles and cardboard. At the moment there is no local infrastructure to allow us to recycle other types of plastic. We will consider extending the plastic recycling service to other forms of plastic as soon as it is practical and cost effective to do so.

You said you wanted a kitchen caddy.

We will deliver one with your new recycling bins.

Most of you said you could find room for additional bins.

80% of people who responded to the Citizens Panel said they would be able to accommodate the extra bin for plastic and cardboard and food waste. To help minimise any problems a three quarter size bin for plastic and card will be provided.

Most of you thought your plastic and cardboard bin would be large enough.

80% of people who responded to the Citizens Panel thought there would still be some room in this bin after a fortnight. Any spare space can be used to recycle other materials when it becomes practical to do so.

You told us that after recycling food waste and using the other kerbside recycling services you would have enough room in your green rubbish bin for all the remaining waste even when it is collected fortnightly.

Only 16% of people who responded to the Citizens Panel expect to find it difficult to find room for all their rubbish in their bin.

Less than 15% of people who responded to the questionnaires expressed concerns related to fortnightly collections.

Many more wanted to recycle additional materials.

Our detailed guide to the new services, with advice on what to do if you are having problems, will be delivered with your new bins. Further information is also available on our website www.epsom-ewell.gov.uk or by calling us on **01372 732000**.

A large part of the work carried out by the pollution control section of Environmental Health involves the investigation of nuisance complaints and the improvement of air quality.

Investigating nuisance complaints and improving air quality

712 nuisance complaints were investigated in 2007* which included concerns regarding loud music from licensed and residential premises, piles of rubbish and smoke from bonfires. As well as the more obvious potential health problems associated with rubbish piles and smoke, noise can impact on mental health through annoyance and sleep deprivation.

Once a noise complaint is received, often the complainant is asked to complete diary sheets which give an indication of the frequency of the problem, the times of day it occurs and the interference to the use and enjoyment of their property. An Environmental Health Officer will also look at the effect on human health, the nature of the surrounding area and whether the problem is the result of reasonable activity.

For noise complaints, we may decide to install noise recording equipment and visit to witness the problem. Our out-of-hours noise service deals with noise problems during the evenings and weekends.

Each case is dealt with on an individual basis and an informal approach to deal with noise complaints is the first step. When this approach is not effective, we can



levels remain within the national objective to minimise the impact on health.

An Air Quality Management Area (AQMA) was declared on Ewell High Street in July 2007. Monitoring indicated that the concentration of nitrogen dioxide in this area was likely to be higher than the national objective in the future. The levels recorded do not pose a significant health risk, however it does show that steps need to be

serve a legal notice on the person causing the noise. A breach of this notice can result in

a fine of up to £5,000 or £20,000 for an industrial, trade or business premises.

Environmental Health is also responsible for local air quality management. Nitrogen dioxide and other pollutants are monitored within the Borough to make sure they are below national Government guidelines. Nitrogen dioxide is an irritant gas which can worsen respiratory conditions and lower resistance to respiratory infections. Burning fossil fuels in vehicle engines are the main sources of these pollutants in Epsom & Ewell. We monitor the concentration of nitrogen dioxide at 19 sites around the Borough and aim to make sure

taken to reduce nitrogen dioxide levels. We are currently carrying out 12 months of detailed monitoring to confirm the levels and the exact sources of the pollutant. This information will then be used to develop an action plan which is due to be completed by November 2009.

Environmental Health also monitors emissions of air pollutants from certain industries in the Borough by issuing permits to operate. Currently we regulate solvent emissions from dry cleaners and paint sprayers and petrol vapour from service stations. We also inspect the Borough for any potentially polluting industries which need to be regulated.

To find out more about the Borough's air quality and progress reports visit the Council website www.epsom-ewell.gov.uk

1,251 visits to treat rats (service is free of charge to residents).
374 noise complaints dealt with.
338 other nuisance/public health complaints investigated.

25 Premises licence applications scrutinised to reduce likelihood of nuisance from licensed premises.
8 new permits granted to regulate polluting industries.

24 inspections to check compliance with permit conditions on other polluting industries.
169 Proactive smoke free visits undertaken in the run up to the smoke free legislation.

*Calendar year Jan-Dec 07. No statistics available for 2008 at time of going to press.



Search for your family at Epsom Cemetery

Have you been searching for that missing link in your Epsom & Ewell family history? Epsom Cemetery staff may be able to help fill in the blanks by searching more than 28,000 records of people buried at the Cemetery.

Every person buried at the Cemetery since it first opened back in 1871 is recorded. Callers simply need to provide a first name, surname and approximate date of death for officers to be able to search the computerised records.

A move by central government encourages the use of cemeteries as important green open spaces, diverse in wildlife, insects, plants and trees, and Epsom Cemetery is a prime location for a peaceful walk with its tree and plant lined paths, picturesque chapel and historical importance.

A Garden of Remembrance is available for cremated remains or alternatively cremated remains can be placed in an existing or newly purchased grave space so family members can be laid to rest together. A new Pergola plot opened last Spring has a central paved area, seating, a pergola with climbing roses and clematis and fantastic views across to London.



The grounds are open 364 days a year, only closing on Derby Day. Opening times vary between the seasons and are displayed on the gates and boards at the main entrances.

For more information about the cemetery, family history searches or other services, please contact Sue Bonner or Harry Walker on 01372 732000.

Council awarded for partnership working

In October, Surrey Fire and Rescue honoured Epsom & Ewell Borough Council for its contribution to partnership working. An External Partner Award was given to the Crime and Disorder Reduction Partnership which is made up of community safety officers from Elmbridge, Spelthorne and Epsom & Ewell Borough Councils.

The team was credited for its financial and public support of the Surrey Fire and Rescue Service Youth Engagement Scheme. The scheme offers young people aged 14-17 the chance to take part in a five-day practical programme at a fire station. In turn the course aims to aid personal development and address anti-social behaviour in the community including fire and vehicle related crime.



150 years of Ewell West Station

To celebrate the 150th anniversary of Ewell West Station there will be a day of activities on Saturday 4th April 2009 to be opened by BBC News' Nicholas Owen and the Mayor of Epsom & Ewell.

The day will include displays, vintage bus rides between the station and NEScot, a fairground organ, St Mary's Morris Dancers, veteran steam roller, ride a steam-pulled scale model train, model rail layouts of Epsom & West Ewell plus bouncy castle and much more.

Admission is free but donations will be given to the Mayor's Charity Fund and St John Ambulance. For further details please ring 020 8393 1749 or email Brian Angus at brian@ewell150.co.uk

Young people show their support for Youth Leisure Day

More than 700 young people from across Epsom & Ewell attended the annual Epsom & Ewell Borough Council Youth Leisure Day which was held for the first time at Bourne Hall in October.

A range of free activities were on offer throughout the day which was aimed specifically for 13-17 year olds. Activities included fencing demonstrations, dance lessons and circus skills workshops. The Oxygen Bar attracted a large number of young people while entertainment was provided by a series of local live bands, caricaturist and magician. Adapt to Overcome (ATO) Freerunning squad impressed the crowds with their expertise while sumo wrestling, rodeo bull and speed cage from Fulham Football Club were popular.

Young people were also given the opportunity to learn about the dangers of underage drinking and crime and disorder, through an interactive theatre presentation and workshop organised by the Epsom & Ewell Crime Disorder and Reduction Partnership. Tackling underage drinking and associated anti-social behaviour and crime is a priority for the Borough. The theatre production forms part of a campaign hosted by Surrey Crimestoppers to help raise awareness among young people about the impact underage drinking can have on them and the community,



Improved Play Provision for Teenagers

Epsom & Ewell Borough Council's award of £200,000 from the Big Lottery Fund has seen major play improvements for young people aged 12-18. The grant, gained in 2007 for use over three years, supports a portfolio of five projects developed to provide engaging play opportunities in the local area.

The five sites and projects that have benefited from the funding are:

- **Auriol Park** – provision of a Multi Use Games Area
- **Poole Road Recreation Ground** – new provision of teenage play facility
- **Alexandra Recreation Ground** – new provision of informal sports area including teenage play equipment
- **Gibraltar Recreation Ground** – new provision of an outdoor basketball court
- **The Wells Playground** – new innovative play equipment to enhance the current provision

Forming part of the Borough's Play Strategy, the projects were selected following an external audit of play facilities and extensive consultation with the public, including young people.



Tennis for free returns to Epsom

Children and parents took part in the re-launched Tennis For Free scheme at Court Recreation Ground recently where they enjoyed free tennis coaching and learnt how to develop

their tennis skills through games and fun activities. Children as young as four took part in the fun sessions and adults, some of whom had not picked up a racquet since their school days, were encouraged to have a go.

Tennis For Free is held every Saturday at Court Recreation Ground, Pound Lane, Epsom from 1-3pm, for 50 weeks a year. The scheme consists of two hours of free coaching per week and is carried out as a group session which is open to any age and standard. On Saturday 17 January 2009, the scheme will be extended to include Alexandra Recreation Ground. Everyone, of all ages is invited to the launch which takes place between 10am and noon.

While the Tennis for Free Coaching scheme will be run from Court Recreation Ground and Alexandra Recreation Ground, other tennis courts available free of charge in Epsom & Ewell are at Poole Road, Gibraltar Recreation Ground and Auriol Park.

For further information about the scheme, please contact Nicola Gray, Epsom & Ewell Borough Council's Community Sports Development Officer on 01372 732000.

Epsom & Ewell Borough Council needs you for the Surrey Youth Games 2009!

Calling all young sporting stars



Free trials and coaching sessions will begin in March and April to choose the squad that will represent the Borough of Epsom & Ewell at the popular Surrey Youth Games on 20 and 21 June in Guildford and Woking.



The Surrey Youth Games is a really exciting sporting event which allows young people of all ages to play a range of sports at a competitive level, against teams from the other 10 boroughs and districts of Surrey. It is a great opportunity to make some new friends and try your hand at some sports that you may not have played before.

Qualified coaches will run all sports, with the majority having direct links with local clubs with junior sections. Those chosen for the sporting squads will be invited to advanced training sessions leading up to the Games, meet the rest of their teammates, learn more about the sport as well as

learn some special skills and tricks.

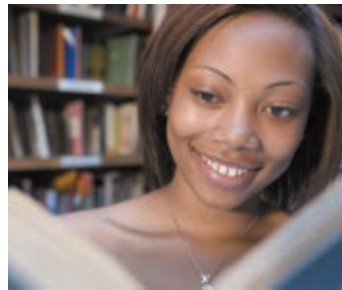
To be eligible to represent the Borough of Epsom & Ewell at the Surrey Youth Games, you must either live in or go to school in the Borough and must be of sub-county level.

Sports available include*:

School Years	Activity
5 & 6	Athletics (mixed)
5, 6, 7, 8 & 9	Badminton (mixed)
7, 8 & 9	Basketball Boys & Girls
3 – 11	Boccia (mixed)
7, 8 & 9	Fencing Boys and Girls
3, 4, 5 & 6	Football Girls
9 & 10	Football Boys (MLD)
10 & 11	Futsal Girls
5 & 6	Hi-5 Netball (mixed)
5 & 6	Hockey (mixed)
7, 8 & 9	Hockey Boys and Girls
3 – 11	Judo Boys and Girls
7, 8, 9 & 10	Netball Girls
3 & 4	Tag Rugby (mixed)
7 & under	Squash (mixed)
7, 8, 9 & 10	Swimming Boys and Girls
6, 7, 8 & 9	Tennis (mixed)

**Some categories are subject to change*

For more information, please contact Nicola Gray, Community Sports Development Officer, on 01372 732000 or email: ngray@epsom-ewell.gov.uk. Alternatively please visit www.epsom-ewell.gov.uk for further details and to register your interest.



Bringing stories to life

Bourne Hall Museum and the Surrey Storytellers Guild will bring storytelling to life for adults, children and families during National Storytelling Week from 31 January - 7 February at Bourne Hall. There promises to be a real feast of stories to suit all tastes, with opportunities to have a go at storytelling in workshops or open mike concerts.

For adult audiences, a storytelling club will be held in Ewell, with an open mike session for anyone who wants to tell a tale. A Serendipity Story Slam for 8-13 year olds will be hosted by the Bourne Hall Museum Club where young people can come along and tell a story. There will also be some storytelling in the Museum, schools and other organisations throughout the week.

For more information on National Storytelling Week see www.sfs.org.uk. For details on Surrey Storytellers Guild or the Three Heads in a Well adult storytelling club in Ewell contact Janet Dowling on 07834 194215 or email: netTells@gmail.com



Your Common Needs You!

The Countryside Team at Epsom & Ewell Borough Council would really appreciate your help in carrying out a visitor survey to find out what you think about Epsom Common and how it is being managed. The information will be used to assist in planning future improvements with the aim of achieving National Nature Reserve status for our Common by 2015.

We have teamed up with GreenStat, a national initiative using the internet, to find out what people think about their parks and open spaces. Please visit www.greenstat.org.uk and follow the online instructions to take you to the Epsom Common visitor survey questionnaire.

The Council's policy is to ensure good public access at the same time as protecting Epsom Common's nationally important wildlife. In recent years there has been a great deal of work carried out by both Council staff and volunteers to improve the Common for both wildlife and people.

Some of the achievements over the last 10 years include:

- Cattle grazing returned to the Common in 1997
- **ECOVOLS volunteer group formed in 1998**
- Epsom Common declared a Local Nature Reserve in 2001
- **Information boards at all main entrances in 2000**
- Views to the North Downs and Great Pond restored between 2000 and 2005
- **Charcoal produced by volunteers to help raise funds**
- A site leaflet with colour coded routes on the ground in 2002
- **All rights of way signposted**
- Great Pond dam restored in 2005
- **A joint management forum created with Ashted Common in 2005**
- A 10-year management plan agreed in 2005
- **Silver Washed Fritillary butterflies returned to the Common in 2006**
- Britain's smallest and rarest ladybird the Horseshoe Ladybird (*Clythetus Arcuatus*) discovered in 2006
- **Bridleway 38 jointly restored in 2007 with the City of London (Ashted Common)**
- Epsom Common achieved 'Green Flag' status in 2007 & 2008
- **Green Heritage status achieved for the first time in 2008**
- A joint leaflet with the City of London produced with a map of both sites in 2008

To find out more about Epsom Common and how it is managed please visit the Epsom & Ewell Borough Council website at www.epsom-ewell.gov.uk. If you would like to talk to a member of the Countryside Team please call 01372 732000.



Peer Support at Rosebery School

Bullying and low self-esteem were explored as part of Rosebery School's Peer Support Network event which was funded by a £700 grant from the High Sheriff Youth Awards. Co-ordinated by two Rosebery School sixth formers, Charlotte Davison and Freya Austin, participants at the event discussed issues which affect schoolchildren including what problems can hold them back before looking at ways to promote happiness and wellbeing.

The Peer Support Listening scheme was set up a few years ago at the school to assist in promoting positive mental health in schools. Year 10 girls who become supporters receive training in the basic skills needed and continue as peer listeners throughout their remaining time at the school. The service is confidential and open twice a week at lunchtimes and has had a very positive effect on the wellbeing of students within the school.



Lots happening for local Guides, Brownies and Rainbows

Guides and Brownies from Epsom & Ewell gathered together at Walton Firs Scout Campsite, in Cobham recently to enjoy an Activity Day together. Over 70 girls and 16 Leaders joined in with the activities throughout the day which included climbing, archery, cooking on a wood fire and the adventure course.

Rainbows and their leaders from Epsom & Ewell celebrated their 21st Birthday in 2008. Over 100 girls and 20 leaders enjoyed an afternoon of fun activities and games including making birthday cards and decorating birthday cakes. The girls also enjoyed a visit from Epsom & Ewell Mayor, Councillor Alan Winkworth and his wife Vanessa.



Walking the Way to Health

If you are looking for a free, safe and simple way to get fit, look no further than Epsom & Ewell Health Walks which regularly take place at a variety of locations throughout the Borough.

It is a great opportunity for anyone of any age and level of fitness to come and enjoy the surrounding beauty while making a real difference to your health. Trained walk leaders are on hand to lead the walk and provide motivation.

Evidence has shown that a physically active lifestyle is beneficial to health and walking can produce a wide range of health, social and community benefits. When walking at a moderate pace, it can improve fitness levels and reduce the risk of coronary heart disease by half, assist weight management, enhance mood and prevent the onset of common medical conditions and ailments.

Currently Epsom & Ewell Health Walks offer 30 minute and 1 hour walks, and walks for people with prams and buggies, across 18 different locations across the Borough.

If you would like more information or are interested in becoming a walk leader please contact Nicola Gray, Community Sports Development Officer, Tel: 01372 7321000 or email: ngray@epsom-ewell.gov.uk

For further details please e-mail: girlguidingepsom@talktalk.net or visit www.girlguidingepsom.org.uk



Epsom Book Fair

Epsom's hugely popular annual Charity Book Fair takes place again this February at Epsom Methodist Church in Ashley Road. This massive event is now in its eighth successful year and by popular demand will be held over three days this time, on Thursday 19 and Friday 20 February from 10am to 8pm and Saturday 21 February from 10am to 4pm.

There will be many thousands of quality books on offer at bargain prices. The vast range includes children's books, antiquarian, out-of-print, fiction and non-fiction, plus CDs, DVDs, records and sheet music. Refreshments and light lunches are available and entrance is only 50p for adults and free for children.

What's on...



Epsom Medical Equipment Fund
BARN DANCE
 Saturday 7 March
 At Epsom & Ewell High School, Ruxley Lane
Tickets: £14 each to include a fish and chip supper
Tel: 020 8337 8181
 Sponsored by National Counties Building Society

Epsom Playhouse
 In association with the Ashley Centre
Search for a Choir Competition
WINNER'S CONCERT
 Friday 27 March at 7.30pm
Box Office: 01372 742555
www.epsomplayhouse.co.uk

...and who's who

Acacia Bridge Club 020 8393 8988
Age Concern Epsom & Ewell 01372 732456
Air Crew Association (Surrey Branch)
 01293 781437
Auriol Ladies Bowls Club 020 8330 0484
Auriol Mens Bowls Club 020 8224 2796
Beacon Ramblers 020 8393 9257
Bourne Hall 020 8393 9571
Breathe Easy Epsom Club 020 8393 8187/
 020 8337 8965
Burma Star Association Epsom Branch
 01372 748536
Conquest Art 020 8397 6157
Cruse Bereavement Care 020 8393 7238
Epsom & District NHS Retirement Fellowship
 020 8642 3389
Epsom & Ewell Art Group 020 8642 4072
Epsom & Ewell Citizens Advice Bureau
 01372 720205
Epsom & Ewell Colts Football Club
 (4-17 years) 020 8393 4576
Epsom & Ewell Energy Group 01372 722341
Epsom & Ewell Football Club 01737 350982
Epsom & Ewell History & Archaeology
Society 020 8330 0852
Epsom & Ewell Model Railway Club
 01483 576274
Epsom & Ewell Philatelic Society
 020 8393 8217
Epsom & Ewell RSPB Local Group
 020 8786 7388
Epsom & Ewell Silver Band 07908 855393
Epsom & Ewell Talking Newspaper
for the Blind 01372 721519
Epsom & Ewell Town Twinning Association
 01372 811228
Epsom & Ewell WI 01372 726874
Epsom Bowling Club 01372 726483
Epsom Camera Club 020 8393 5370
Epsom Chamber Choir 01372 729422
Epsom Choral Society 01372 725000

Epsom Common Association 01372 812399
Epsom Court Bowling Club 01737 350755
Epsom Cycling Club 01372 376507
Epsom Garden Flower Club 01372 720816
Epsom Garden Society 01372 726661
Epsom Golf Club 01372 721666
Epsom Hockey Club 01372 272006
Epsom Ladies Indoor Bowling Club
 01372 720927
Epsom Male Voice Choir 020 8393 8978
Epsom Mayday Flower Club 01737 351569
Epsom Medical Equipment Fund
 020 8337 8181
Epsom Park Bowling Club 020 8393 0810
Epsom Players 01737 279289
Epsom Playhouse 01372 742555
Epsom Playhouse Pre-School 01372 742555
Epsom Protection Society 01372 723325
Epsom Quakers 01372 724906
Epsom Recorded Music Society 01737 845246
Epsom Rotaract 18 - 30 Club 07768 372085
Epsom Support Group for the Hard of
Hearing 01372 721061
Epsom Women's Club 01372 739628
Epsom Women's Institute 020 8393 6837
Epsom, Ewell & District Literary Society
 01372 722878
Ewell Astronomical Society 020 8224 5818
Ewell Court Women's Club 020 8393 6880
Ewell Court WI 020 8393 4776
Ewell Evening Townswomen's Guild
 020 8393 3807
Ewell Mens and Ladies Bowls Club
 020 8224 2705
Ewell St Mary's Morris Men 020 8397 7743
Ewell Tennis Club 020 8393 1815
Fitznells Wind Band 020 8393 5928
Girls Brigade 1st Ewell 01372 275499
Girlguiding Epsom 020 8641 1501
Home Counties Sub Aqua Club 020 8393 2214
Home-Start Epsom Ewell & Banstead
 01737 379902

Horton WI 020 8394 1556
Langley Vale WI 01737 819527
Juvenile Diabetes Research Foundation
 01737 352443
KSF Vipers Roller Skater Hockey Club
 020 8395 3234
Mid Surrey Mediation Service 07513 524241
Mid Surrey Ramblers 01372 742921
National Childbirth Trust 0870 421 4415
Orbit Club of Nonsuch 020 8393 1919
Parkinsons Disease Society
(Sutton, Kingston & Epsom Branch)
 020 8337 6088
Probus Club of Epsom 020 8393 0688
Probus Club of Ewell 020 8337 6241
Ramblers' Association Surrey Under 40s
 020 8337 1244
Ramblers' Association, Epsom & Ewell Group
 01372 720816
Rotary Club of Epsom 01372 728564
Rotary Club of Ewell 077940 770098
Singles Luncheon Club (58+) 01372 720825
Social Singles (55+) 020 8337 4839
St Martin's Pre-School Playgroup
 07793 554340
St Mary's Ewell Bellringers 020 8394 0572
St Mary's Toddler Group 020 8393 4804
Stoneleigh Choral Society 020 8393 8653
Stoneleigh Dancing Club 01372 277938
Surrey Association for Visual Impairment
(SAVI) 01372 377701
The Ebbisham Centre 01372 846800
The Epsom & District NHS Retirement
Fellowship 020 8642 3389
The Fitness League 020 8979 7460
The Friends of Nonsuch 020 8644 9297
Wateraid 01737 831023
Wesley Quilters 01372 728535
Wheels & Squeals Toddler Group
 01372 747957
WRAG (Waste & Recycling Action Group)
 01372 720753

25th Anniversary Season

Thursday 22 & Friday 23 January at 8.00pm

Leiber and Stoller's

SMOKEY JOE'S CAFE

An adrenaline fuelled musical extravaganza

Monday 2 February at 8.00pm

TOTALLY LOOPED

The movie-based improv show
Starring Marcus Brigstocke

Thursday 5 February at 8.00pm

TAPEIRE

An explosive mix of dance, rhythm, music and video

Friday 6 February at 8.00pm

THE GREAT BRITISH JAZZ BAND

Led by Digby Fairweather

Sunday 8 February at 7.30pm

JASON MANFORD

Multi-award winning comedian and star of '8 out of 10 cats'

Tuesday 10 February at 8.00pm

FASCINATING AIDA

Britain's top female comedy trio are back with an all new show

Tuesday 24 & Wednesday 25 February at 8.00pm

STONES IN HIS POCKETS

The multi-award winning comedy by Marie Jones

Thursday 26 February at 7.30pm
Moscow Ballet La Classique

GISELLE

Saturday 28 February at 8.00pm

SHOWADDYWADDY

Europe's most successful exponents of the art of rock'n'roll

Monday 2 March at 8.00pm

ELKIE BROOKS

in Concert



Friday 6 March at 8.00pm

JOE BROWN

The premier rock and roll legend

Saturday 7 March at 7.45pm

INSTANT SUNSHINE

Back by popular demand

Monday 9 March at 7.45pm

THAT'LL BE THE DAY

Over 100 songs mixed with great comedy

Wednesday 11 March at 8.00pm

Apocalypse Asylum - new show from

CIRCUS OF HORRORS

Wednesday 18 March at 8.00pm

THE CHICAGO BLUES BROTHERS

& The All Star Chicago Blues Band

Thursday 19 March at 7.45pm

A NIGHT OF ROMANTIC OPERA

Music from some of the best loved composers

Friday 20 March at 8.00pm

MASTERS OF THE MUSICALS

A wonderful selection of songs from the greatest musicals in history

Monday 23 - Wednesday 25 March at 7.45pm

HUMBLE BOY

“intelligent, funny and touching...”
Daily Telegraph

Thursday 26 March at 7.45pm

CALEDON

Scotland's Tenors, three divine voices

Monday 30 & Tuesday 31 March at 8.00pm

THE NAKED TRUTH

Entertaining and thought provoking.
Starring Lisa Riley, Trudi Goodwin, Julie Buckfield & Abi Titmuss