

# 291 Great Spotted Woodpecker

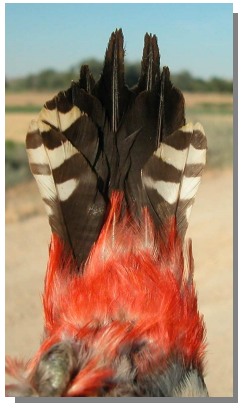


Great Spotted Woodpecker. Adult. Male (05-VII).

## GREAT SPOTTED WOODPECKER (*Dendrocopos major*)

### IDENTIFICATION

20-25 cm. Black upperparts, with white patches on “shoulders”; white throat and breast; red undertail coverts; dark wings with white spotted; black tail with outer feathers white barred; red nape on **male**; black on **female**; black crown on **adults** and red in **juveniles**.



Great Spotted Woodpecker. Pattern of upperparts and undertail coverts.

### SIMILAR SPECIES

Recalls a **Lesser Spotted Woodpecker** which is smaller (14-16 cm), lacks white patches on “shoulders” and without red colour on undertail coverts..



Lesser Spotted Woodpecker.

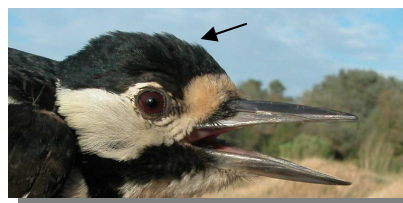
### AGEING

3 types of age can be recognized:

**Juvenile** with red crown edged black; primaries with white spots on tips; dull red undertail coverts; tips of outer tailfeathers narrow and pointed.

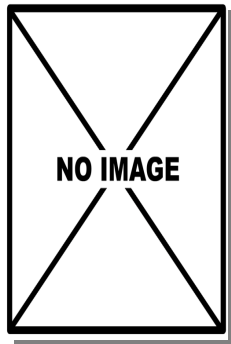
**1st year autumn/2nd year spring** with body feathers and primaries similar to **adult** but with moult limit between juvenile and moulted wing feathers.

**Adult** without moult limits (**CAUTION:** sometimes with some old primary covert retained); black crown in **females** and with red feathers only on back crown in **males**; primaries without white spots on tips; deep red undertail coverts; tips of outer tailfeathers wide and rounded.



Great Spotted Woodpecker. Ageing. Fe3male: top adult; bottom juvenile.

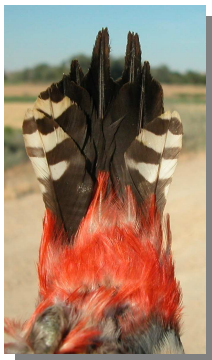
# 291 Great Spotted Woodpecker



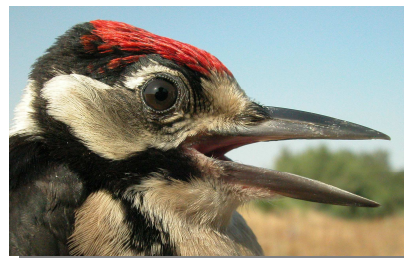
Great Spotted Woodpecker. Ageing. Male. Pattern of crown: left adult; right juvenile.



Great Spotted Woodpecker. Sexing. Adult. Pattern of crown: top male; bottom female.



Great Spotted Woodpecker. Ageing. Colour of undertail coverts: left adult; right juvenile.



Great Spotted Woodpecker. Sexing. Juvenile. Pattern of crown: top male; bottom female.



Great Spotted Woodpecker. Ageing. Pattern of tips of primaries: top adult; bottom juvenile.

## MOULT

Complete **postbreeding** moult, finished late October; sometimes some primary coverts can be retained. Partial **postjuvenile** moult including body feathers, primaries, lesser and median coverts and tail, so greater coverts, primary coverts, secondaries and tertials remain unmoulted; usually finished between september and november.



# 291 Great Spotted Woodpecker

## PHENOLOGY

I	II	III	IV	V	VI	VII	VIII	IX	X	XI	XII

## STATUS IN ARAGON

Resident, widely distributed throughout the Region related with well preserved forests.



Great Spotted Woodpecker. Juvenile. Male (04-VII).



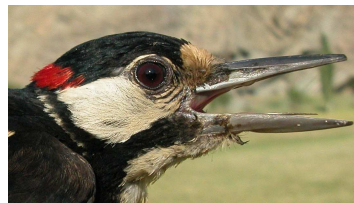
Great Spotted Woodpecker. Adult. Female (29-VI).



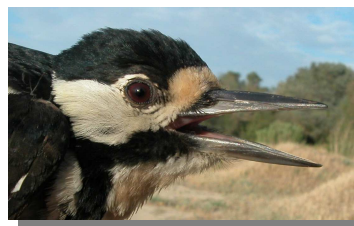
Great Spotted Woodpecker. Juvenile. Female (11-VII).



Great Spotted Woodpecker. 2nd year. Male (16-VI).



Great Spotted Woodpecker. Adult. Head pattern and iris colour: top male (05-VII); bottom female (29-VI).

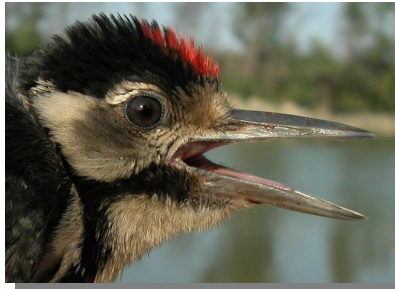
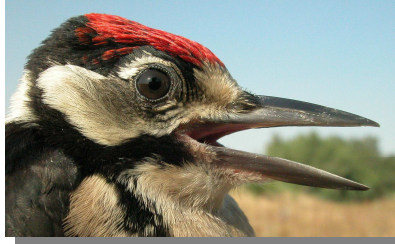


Great Spotted Woodpecker. 2nd year. Head pattern and iris colour: top male (16-VI); bottom female (14-VI).

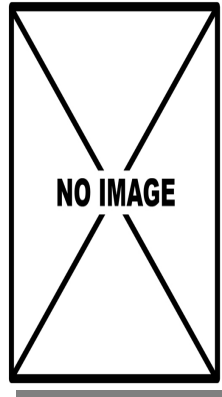


Great Spotted Woodpecker. 2nd year. Female (14-VI).

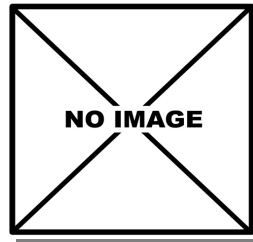
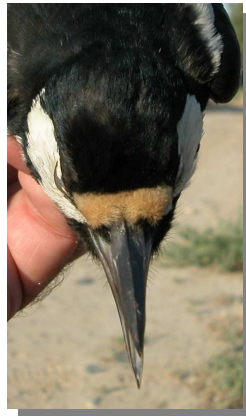
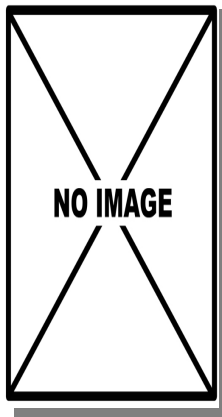
# 291 Great Spotted Woodpecker



Great Spotted Woodpecker. Juvenile. Head pattern and iris colour: top male (04-VII); bottom female (11-VII).

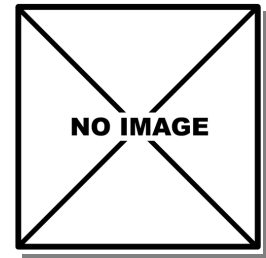


Great Spotted Woodpecker. Juvenile. Crown pattern: left male (); right female (11-VII).

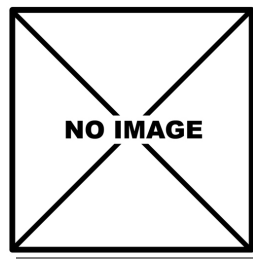
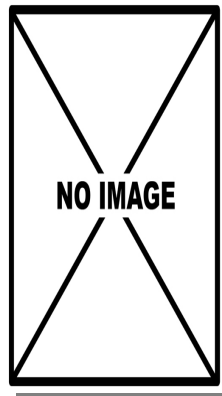
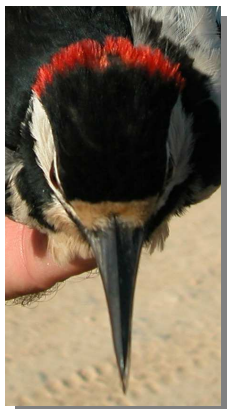


Great Spotted Woodpecker. Adult. Nape pattern: left male (I); right female (29-VI).

Great Spotted Woodpecker. Adult. Crown pattern: left male (I); right female (29-VI)



Great Spotted Woodpecker. 2nd year. Nape pattern: left male (16-VI); right female ().

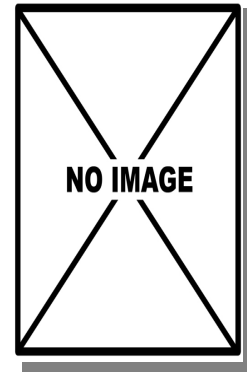
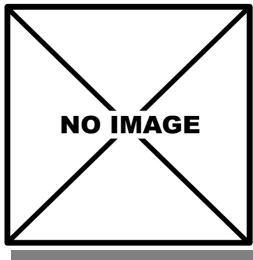


Great Spotted Woodpecker. 2nd year. Crown pattern: left male (16-VI); right female ().

Great Spotted Woodpecker. Juvenile. Nape pattern: left male (); right female (11-VII).

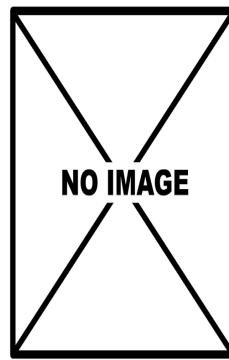
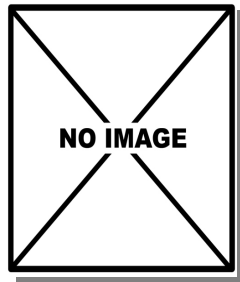


# 291 Great Spotted Woodpecker



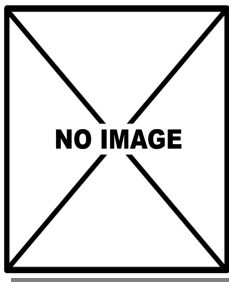
Great Spotted Woodpecker. Adult. Breast pattern: left male (I); right female (29-VI).

Great Spotted Woodpecker. 2nd year. Tail pattern: left male (16-VI); right female ().

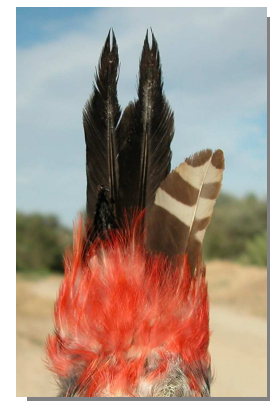
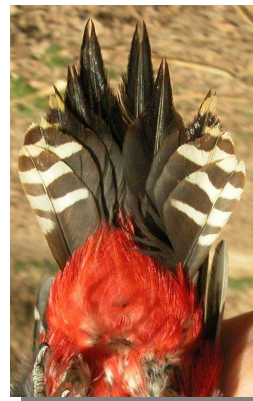


Great Spotted Woodpecker. 2nd year. Breast pattern: left male (16-VI); right female ().

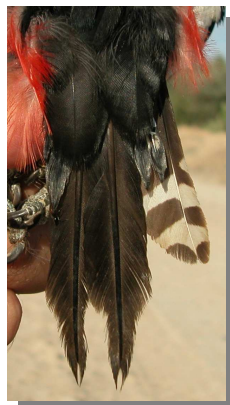
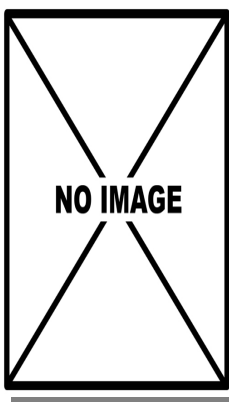
Great Spotted Woodpecker. Juvenile. Tail pattern: left male (); right female (11-VII).



Great Spotted Woodpecker. Juvenile. Breast pattern: left male (); right female (11-VII).

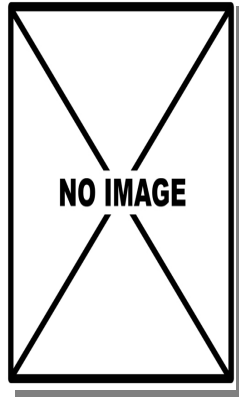
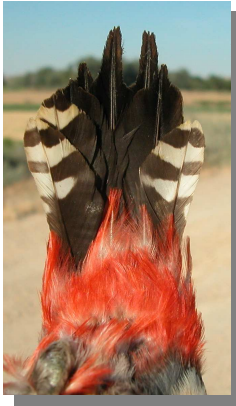


Great Spotted Woodpecker. Adult. Pattern of undertail coverts: left male (05-VII); right female (29-VI).

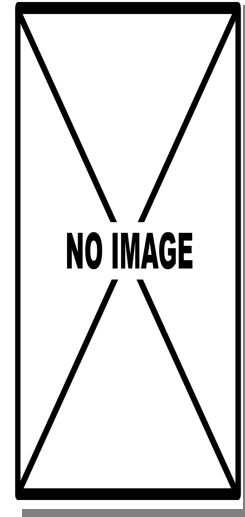


Great Spotted Woodpecker. Adult. Tail pattern: left male (I); right female (29-VI).

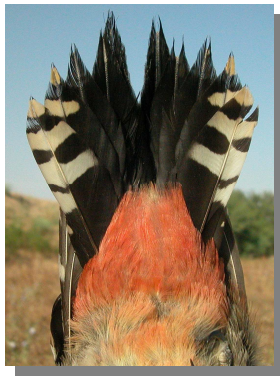
# 291 Great Spotted Woodpecker



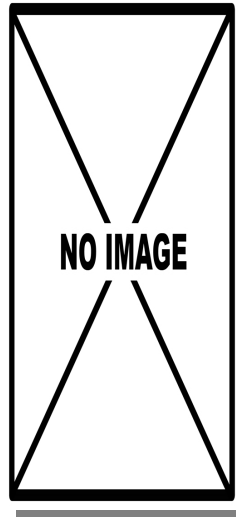
Great Spotted Woodpecker. 2nd year. Pattern of undertail coverts: left male (16-VI); right female ().



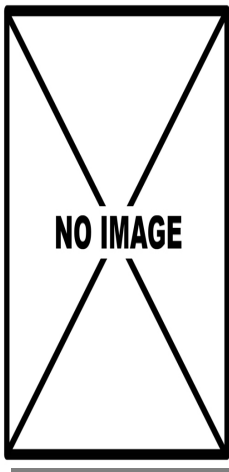
Great Spotted Woodpecker. 2nd year. Upperparts pattern: left male (16-VI); right female ().



Great Spotted Woodpecker. Juvenile. Pattern of undertail coverts: left male (04-VII); right female (11-VII).



Great Spotted Woodpecker. Juvenile. Upperparts pattern: left male (); right female (11-VII).



Great Spotted Woodpecker. Adult. Upperparts pattern: left male (); right female (.



Great Spotted Woodpecker. Adult. Male: pattern of primary coverts with all feathers moulting (26-II).



# 291 Great Spotted Woodpecker



Great Spotted Woodpecker. Adult. Male: pattern of primary coverts with some feathers retained (05-VII).



Great Spotted Woodpecker. Juvenile. Male: pattern of primary coverts (05-VII).



Great Spotted Woodpecker. Adult. Female: pattern of primary coverts with all feathers moulted (29-VI).



Great Spotted Woodpecker. Juvenile. Female: pattern of primary coverts (05-VII).



Great Spotted Woodpecker. 2nd year. Male: pattern of primary coverts (16-VI).



Great Spotted Woodpecker. Adult. Male: pattern of primaries (05-VII).



Great Spotted Woodpecker. 2nd year. Female: pattern of primary coverts (26-II).



# 291 Great Spotted Woodpecker



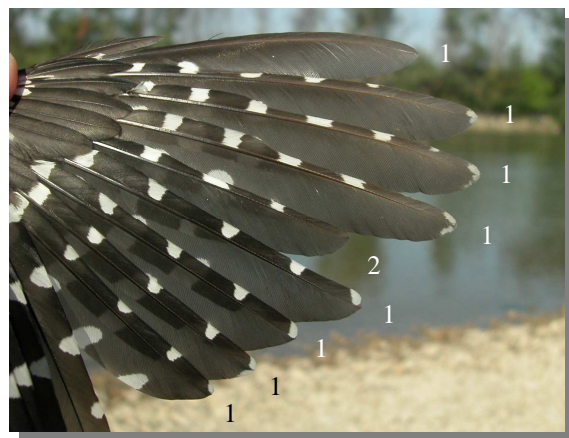
Great Spotted Woodpecker. Adult. Female: pattern of primaries (29-VI).



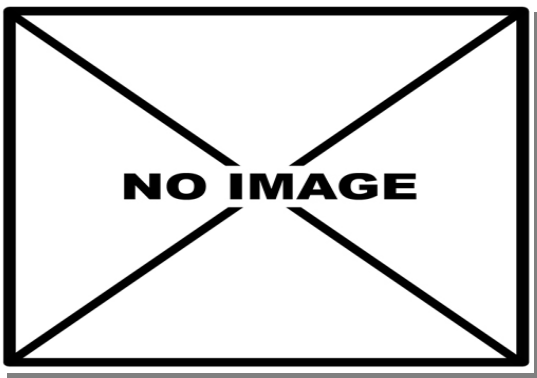
Great Spotted Woodpecker. Juvenile. Male: pattern of primaries (05-VII).



Great Spotted Woodpecker. 2nd year. Male: pattern of primaries (16-VI).



Great Spotted Woodpecker. Juvenile. Female: pattern of primaries (1 juvenile feather, 2 postjuvenile feather) (11-VII).



Great Spotted Woodpecker. 2nd year. Female: pattern of primaries ().



Great Spotted Woodpecker. Adult. Male: pattern of secondaries (05-VII).



# 291 Great Spotted Woodpecker



Great Spotted Woodpecker. Adult. Female: pattern of secondaries (29-VI).



Great Spotted Woodpecker. Juvenile. Male: pattern of secondaries (04-VII).



Great Spotted Woodpecker. 2nd year. Male: pattern of secondaries (16-VI).



Great Spotted Woodpecker. Juvenile. Female: pattern of secondaries (11-VII).

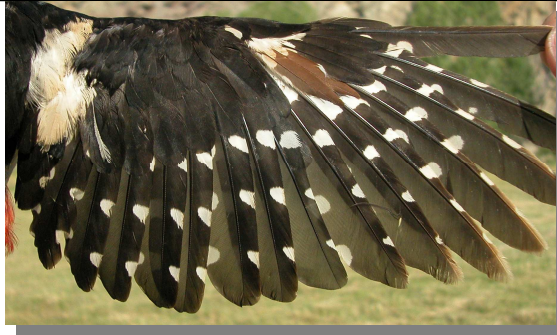


Great Spotted Woodpecker. 2nd year. Female: pattern of secondaries (14-VI).

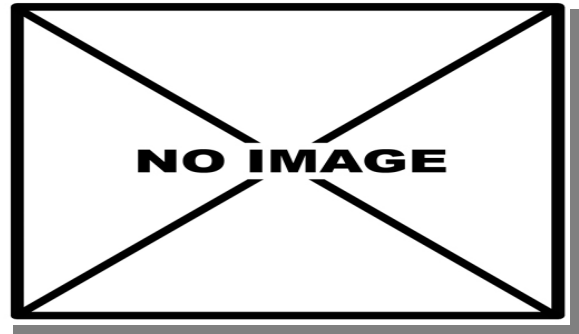


Great Spotted Woodpecker. Adult. Male: pattern of wing with all feathers moulted (26-II).

# 291 Great Spotted Woodpecker



Great Spotted Woodpecker. Adult. Male: pattern of wing with some feathers retained (05-VII).



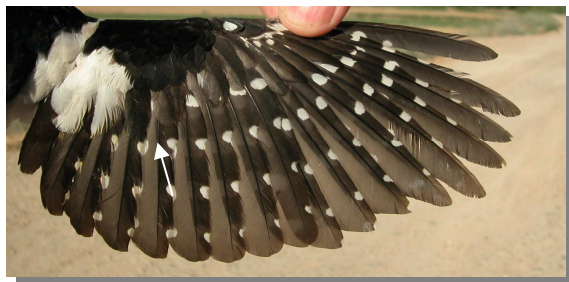
Great Spotted Woodpecker. Juvenile. Male: pattern of wing ().



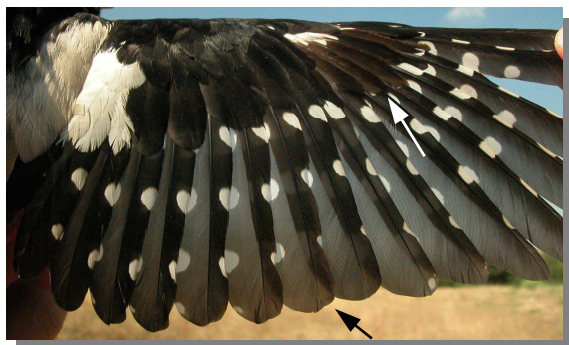
Great Spotted Woodpecker. Adult. Female: pattern of wing (11-VII).



Great Spotted Woodpecker. Juvenile. Female: pattern of wing (11-VII).



Great Spotted Woodpecker. 2nd year. Male: pattern of wing (16-VI).



Great Spotted Woodpecker. 2nd year. Female: pattern of wing (14-VI).