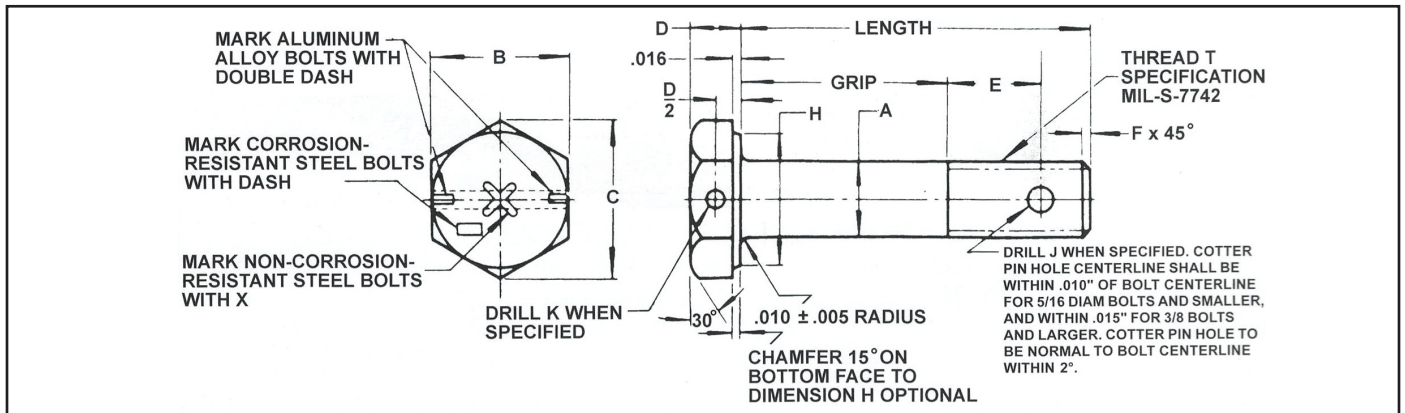


AN3 - AN10 SERIES SPECIFICATIONS

Bolt, Machine, Aircraft, Hex Head

125,000 psi tensile



Dimensions are in INCHES. Unless otherwise specified, tolerances: decimals ± .010, angles ± 5°

Basic AN Part#	Thread T	ADiameter		B		C	D		E	F		H Diam.	J Drill Diam +.010 -.000	K Drill Diam +.010 -.000
		Max	Min	Max	Min		Max	Min		Max	Min			
AN3	#10-32 UNF-3A	.189	.186	.377	.365	.430	.141	.109	.266	.047	.015	.359	.070	.046
AN4	1/4-28 UNF-3A	.249	.246	.440	.428	.510	.172	.140	.313			.422	.076	
AN5	5/16-24 UNF-3A	.312	.309	.502	.490	.580	.204	.172	.359			.484	.076	.070
AN6	3/8-24 UNF-3A	.374	.371	.565	.553	.650	.235	.203	.438			.547	.106	
AN7	7/16-20 UNF-3A	.437	.433	.627	.615	.720	.266	.234	.484	.063	.031	.609	.106	.070
AN8	1/2-20 UNF-3A	.499	.495	.752	.740	.870	.297	.265	.609			.734	.106	
AN10	5/8-18 UNF-3A	.624	.620	.940	.928	1.090	.360	.328	.734	.078	.046	.922	.141	

MATERIAL: Non-corrosion-resistant steel, corrosion-resistant steel, or aluminum alloy. MIL-B-6812 procurement spec.

FINISH: See procurement spec.

Add "C" before dash number for corrosion-resistant steel bolt.

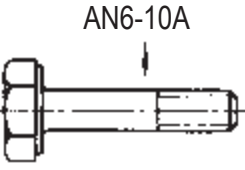
Add "DD" before dash number for aluminum alloy bolt.

Add "A" after dash number for undrilled bolt. See illustration below.

Add "H" before dash number for bolt with drilled head and shank. See illustration below.

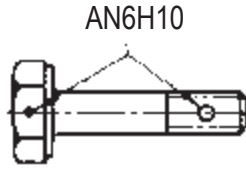
Add "H" before dash number and "A" after dash number for bolt with drilled head only. See illustration below.

Illustration of Drilled & Undrilled Bolts & Part Numbers



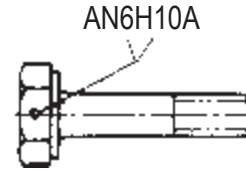
AN6-10A

Undrilled



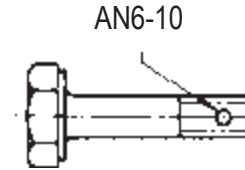
AN6H10

Both head & shank drilled



AN6H10A

Head only drilled



AN6-10

Shank only drilled

Bolts shall be free from all hanging burrs and slivers which might become dislodged under usage. Countersinking of drilled holes in head is mandatory. Countersinking of drilled holes in shank is optional.

AN3 - AN10

Dash No.	AN3		AN4		AN5		AN6		AN7		AN8		AN10	
	Grip	Length	Grip	Length	Grip	Length	Grip	Length	Grip	Length	Grip	Length	Grip	Length
3	.063	.469	.063	.469										
4	.125	.531	.063	.531	.063	.594								
5	.250	.656	.188	.656	.188	.719	.063	.703	.063	.719				
6	.375	.781	.313	.781	.313	.844	.188	.828	.188	.844	.063	.844		
7	.500	.906	.438	.906	.438	.969	.313	.953	.313	.969	.188	.969	.063	1.02
10	.625	1.03	.563	1.03	.563	1.09	.438	1.08	.438	1.09	.313	1.09	.188	1.14
11	.750	1.16	.688	1.16	.688	1.22	.563	1.20	.563	1.22	.438	1.22	.313	1.27
12	.875	1.28	.813	1.28	.813	1.34	.688	1.33	.688	1.34	.563	1.34	.438	1.39
13	1.00	1.41	.938	1.41	.938	1.47	.813	1.45	.813	1.47	.688	1.47	.563	1.52
14	1.13	1.53	1.06	1.53	1.06	1.59	.938	1.58	.938	1.59	.813	1.59	.688	1.64
15	1.25	1.66	1.19	1.66	1.19	1.72	1.06	1.70	1.06	1.72	.938	1.72	.813	1.77
16	1.38	1.78	1.31	1.78	1.31	1.84	1.19	1.83	1.19	1.84	1.06	1.84	.938	1.89
17	1.50	1.91	1.44	1.91	1.44	1.97	1.31	1.95	1.31	1.97	1.19	1.97	1.06	2.02
20	1.63	2.03	1.56	2.03	1.56	2.09	1.44	2.08	1.44	2.09	1.31	2.09	1.19	2.14
21	1.75	2.16	1.69	2.16	1.69	2.22	1.56	2.20	1.56	2.22	1.44	2.22	1.31	2.27
22	1.88	2.28	1.81	2.28	1.81	2.34	1.69	2.33	1.69	2.34	1.56	2.34	1.44	2.39
23	2.00	2.41	1.94	2.41	1.94	2.47	1.81	2.45	1.81	2.47	1.69	2.47	1.56	2.52
24	2.13	2.53	2.06	2.53	2.06	2.59	1.94	2.58	1.94	2.59	1.81	2.59	1.69	2.64
25	2.25	2.66	2.19	2.66	2.19	2.72	2.06	2.70	2.06	2.72	1.94	2.72	1.81	2.77
26	2.38	2.78	2.31	2.78	2.31	2.84	2.19	2.83	2.19	2.84	2.06	2.84	1.94	2.89
27	2.50	2.91	2.44	2.91	2.44	2.97	2.31	2.95	2.31	2.97	2.19	2.97	2.06	3.02
30	2.63	3.03	2.56	3.03	2.56	3.09	2.44	3.08	2.44	3.09	2.31	3.09	2.19	3.14
31	2.75	3.16	2.69	3.16	2.69	3.22	2.56	3.20	2.56	3.22	2.44	3.22	2.31	3.27
32	2.88	3.28	2.81	3.28	2.81	3.34	2.69	3.33	2.69	3.34	2.56	3.34	2.44	3.39
33	3.00	3.41	2.94	3.41	2.94	3.47	2.81	3.45	2.81	3.47	2.69	3.47	2.56	3.52
34	3.13	3.53	3.06	3.53	3.06	3.59	2.94	3.58	2.94	3.59	2.81	3.59	2.69	3.64
35	3.25	3.66	3.19	3.66	3.19	3.72	3.06	3.70	3.06	3.72	2.94	3.72	2.81	3.77
36	3.38	3.78	3.31	3.78	3.31	3.84	3.19	3.83	3.19	3.84	3.06	3.84	2.94	3.89
37	3.50	3.91	3.44	3.91	3.44	3.97	3.31	3.95	3.31	3.97	3.19	3.97	3.06	4.02
40	3.63	4.03	3.56	4.03	3.56	4.09	3.44	4.08	3.44	4.09	3.31	4.09	3.19	4.14
41	3.75	4.16	3.69	4.16	3.69	4.22	3.56	4.20	3.56	4.22	3.44	4.22	3.31	4.27
42	3.88	4.28	3.81	4.28	3.81	4.34	3.69	4.33	3.69	4.34	3.56	4.34	3.44	4.39
43	4.00	4.41	3.94	4.41	3.94	4.47	3.81	4.45	3.81	4.47	3.69	4.47	3.56	4.52
44	4.13	4.53	4.06	4.53	4.06	4.59	3.94	4.58	3.94	4.59	3.81	4.59	3.69	4.64
45	4.25	4.66	4.19	4.66	4.19	4.72	4.06	4.70	4.06	4.72	3.94	4.72	3.81	4.77
46	4.38	4.78	4.31	4.78	4.31	4.84	4.19	4.83	4.19	4.84	4.06	4.84	3.94	4.89
47	4.50	4.91	4.44	4.91	4.44	4.97	4.31	4.95	4.31	4.97	4.19	4.97	4.06	5.02
50	4.63	5.03	4.56	5.03	4.56	5.09	4.44	5.08	4.44	5.09	4.31	5.09	4.19	5.14
51	4.75	5.16	4.69	5.16	4.69	5.22	4.56	5.20	4.56	5.22	4.44	5.22	4.31	5.27
52	4.88	5.28	4.81	5.28	4.81	5.34	4.69	5.33	4.69	5.34	4.56	5.34	4.44	5.39
53	5.00	5.41	4.94	5.41	4.94	5.47	4.81	5.45	4.81	5.47	4.69	5.47	4.56	5.52
54	5.13	5.53	5.06	5.53	5.06	5.59	4.94	5.58	4.94	5.59	4.81	5.59	4.69	5.64
55	5.25	5.66	5.19	5.66	5.19	5.72	5.06	5.70	5.06	5.72	4.94	5.72	4.81	5.77
56	5.38	5.78	5.31	5.78	5.31	5.84	5.19	5.83	5.19	5.84	5.06	5.84	4.94	5.89
57	5.50	5.91	5.44	5.91	5.44	5.97	5.31	5.95	5.31	5.97	5.19	5.97	5.06	6.02
60	5.63	6.03	5.56	6.03	5.56	6.09	5.44	6.08	5.44	6.09	5.31	6.09	5.19	6.14
61	5.75	6.16	5.69	6.16	5.69	6.22	5.56	6.20	5.56	6.22	5.44	6.22	5.31	6.27
62	5.88	6.28	5.81	6.28	5.81	6.34	5.69	6.33	5.69	6.34	5.56	6.34	5.44	6.39
63	6.00	6.41	5.94	6.41	5.94	6.47	5.81	6.45	5.81	6.47	5.69	6.47	5.56	6.52
64	6.13	6.53	6.06	6.53	6.06	6.59	5.94	6.58	5.94	6.59	5.81	6.59	5.69	6.64
65	6.25	6.66	6.19	6.66	6.19	6.72	6.06	6.70	6.06	6.72	5.94	6.72	5.81	6.77
66	6.38	6.78	6.31	6.78	6.31	6.84	6.19	6.83	6.19	6.84	6.06	6.84	5.94	6.89