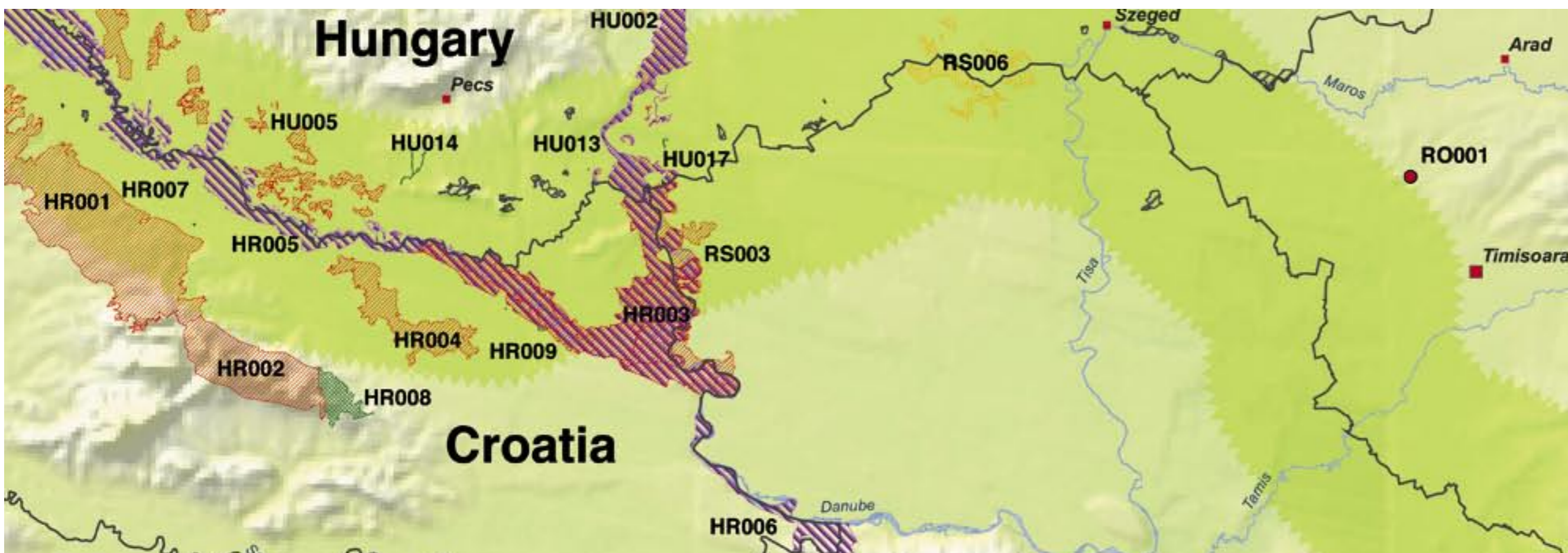


Romania, Serbia, Montenegro



8

www.europeangreenbelt.org

The vision of the European Green Belt Initiative is to create the backbone of an ecological network, running from the Barents to the Black Sea that is a global symbol for transboundary co-operation in nature conservation and sustainable development.

0 150 300 600 Kilometer



LEGEND



Selected Green Belt Areas

- Core area
 - Cluster of stepping stones
 - Linear corridor
 - Satellites of core areas
 - Other protected sites
 - Major waters
 - Countries in Europe
 - Green Belt Search Area 25 km (methodological buffer zone)
- Urban Areas – Cities (population)
- 1,000,000 and greater
 - 500,000 to 1,000,000
 - 250,000 to 500,000
 - 100,000 to 250,000
 - Less than 100,000

Information about maps' projection
 Projection: UTM Zone 33N
 Ellipsoid: GRS 1980
 Reference system: ETRS 1989

Country labels based on:
 ISO 3166-1, Newsletter No. V-12
 Date: 2006-09-26
 ISO International Organization for Standardization Maintenance Agency

This series of posters is one output of a project carried out from 2005 to 2007: „Development of a Common Geo Database as a Professional Basis for Conservation and Development of the European Green Belt“.

The Green Belt initiative aims to conserve valuable habitats along the former „Iron Curtain“ and adjoining areas and to enable a pan-European ecological network.

To achieve this besides the coordination, initiation and realisation of conservation efforts and projects on all levels, the creation of a common geo-database as a professional basis for conservation and development is required.

The objectives of this project are to:

- provide information on and links to protected areas
- identify priority areas for future projects
- state preconditions for Green Belt projects
- publish results scientifically as well as in marketing
- form regional identities based on natural values
- gain influence on spatial planning in border areas

Creation of Maps:
Bureau of Ecological Studies GdbR
 Oberkonnorsreuther Str. 6a • 95448 Bayreuth • Germany
www.bfoes.de

- Albania (AL)**
 AL002 Core area Skadar lake (Liqueni i Shkodres)
 AL003 Core Area Bojana-Buna Delta
 AL009 Core Area National Park Thethi
 AL018 Satellites of Core area Skutari-Bojana and Bojana-Buna Delta
- Bulgaria (BG)**
 BG003 Satellites of Core area Zemen
 BG006 Core area Osogovska planina
 BG007 Core area Pirin
 BG013 Core area Rodopi - Zapadni
 BG014 Core area Karvav kamak
 BG016 Core area Zapadna Stara planina i Predba
 BG017 Core area Reka Mesta
 BG019 Core area Zemen
 BG025 Core area Dragoman
 BG026 Core area Rila National Park and NP Rilski Manastir
 BG027 Core area Oranovski Prolom-Leshko
 BG028 Core area Kresna - Ilindentzi
 BG029 Core area Skrinio
 BG030 Cluster of Voynitsa, Deleina and Makresh
- Croatia (HR)**
 HR001 Core area Bilogora i Kalničko gorje
 HR002 Core area Papuk
 HR003 Core area Podunavlje and lower Podravlje, Kopački rit and Drava forest
 HR004 Core area Ribnjaci Gurdnjak i Našički ribnjak s kompleksom I
 HR005 Linear corridor Mura-Drava
 HR006 Linear corridor Obronci Fruške gore kod Iloka and Dunav-Vukovar
 HR007 Satellites of Core area Bilogora i Kalničko gorje
 HR008 Satellites of Core area Papuk
 HR009 Satellites of Core area Podunavlje and lower Podravlje, Kopački rit and Drava forest
- Hungary (HU)**
 HU002 Core area PSCI and SPA Gemenc and Béda-Karapancsa
 HU005 Core area PSCI Ormánsági erdő and Ormánsági vizes élőhelyek és gyepek
 HU013 Linear corridor SPA and PSCI Drava
 HU014 Satellites of Core area PSCI Ormánsági erdő and Ormánsági vizes élőhelyek és gyepek
 HU017 Satellites of Core area PSCI and SPA Gemenc and Béda-Karapancsa
- Republic of Montenegro (ME)**
 ME001 Core area Bojana Skutari
 ME002 Core area Moraca River Basin
 ME003 Core area NLP Biogradska Gora
 ME004 Core area NLP Prokletije
- Albania (AL)**
 ME005 Core area Lake Skadar
 ME006 Core area Visitor sa Zeletinorn
 ME007 Cluster of Biosphere Reserve Tara River
 ME008 Linear corridor River Cijevna
 ME009 Core area Komovi
 ME010 Core area Rumija
- FYR Macedonia (MK)**
 MK003 Core area NLP Mavrovo
 MK004 Core area Jacubica
 MK005 Core area Osogovo
 MK006 Core area between Vinica and Delcevo
 MK007 Core area Plackovica
 MK010 Core area Sar Planina Tetovo
- Republic of Serbia (RS)**
 RS001 Core area Deliblatska peščara
 RS002 Core area Đerdap
 RS003 Core area Gornje podunavlje
 RS004 Core area Prokletije
 RS005 Core area Stara planina
 RS006 Cluster of Emeraldsites Subotička Peščara, Selevensjke Pustare, Ludaško Jezero and Palić
 RS007 Core area SAR Planina
- Romania (RO)**
 RO001 Core area Bogs of Satchinez
 RO002 Core area Karstic System Topolnita-Epuran

The GIS data used within this Green Belt project were kindly provided by the respective state authorities and/or national NGOs, or extracted from EU-databases. IUCN does not hold responsibility for the current status of the displayed protected areas.

IUCN and the Green Belt
 Coordination Office accept no liability for any errors, misprints or omissions herein concerning the legal status of any country, territory or area, or its authorities, or concerning the definition of its frontiers or boundaries.

As at June 2007

Borders separate, nature unites.

This project has been funded by the German Federal Agency for Nature Conservation (BfN) with funds of the German Federal Ministry for the Environment, Nature Conservation and Nuclear Safety and by the German Federal Foundation for Environment Protection (DBU).

