



Southern Highways Program 2011 to 2015



Hwy 401 Toronto

Photo Source: www.wapedia.mobi/en/Highway_401



QEW Mountain Road, Niagara Falls

Table of Contents

- Overview**1
- Constant Innovation**2
- 2010 Completed Construction Highlights**5
- 2011-2015 Southern Highways Program**
 - 2011 Construction Highlights12
 - Borders & Gateways.....14
 - Partnerships.....16
- Expansion Projects**
 - 2011-2015: Southern Ontario18
 - 2011-2015: Greater Golden Horseshoe20
- Rehabilitation Projects**
 - Central Ontario:
 - 2011, 2012, 2013-2015..... 22
 - Eastern Ontario:
 - 2011, 2012, 2013-2015.....32
 - Western Ontario:
 - 2011, 2012, 2013-2015.....40
- Planning for the Future**
 - Projects beyond 201547
 - Future Southern Ontario Projects..... 48
 - The Highway Planning Process.....50

**A sustainable transportation system
balances our commitment to
moving people with social, economic
and environmental needs.**



QEW Sodom Road, Fort Erie

Overview

Background - Southern Highways Program

The Southern Highways Program was first published in 2006 in conjunction with the ReNew Ontario plan. ReNew Ontario was a \$30-billion dollar investment strategy to strengthen Ontario's economy and communities: \$3.4 billion was set out for the renewal and expansion of southern highways over five years.

Investing in Infrastructure and Sustainability

Ontario's transportation network is the backbone of the province. With more than \$1.2 trillion worth of goods moving through Ontario every year, our economy and quality of life depend on keeping transportation safe, efficient and reliable. Since 2003, the Ontario government has made it a priority to invest in transportation infrastructure throughout the province. This has helped Ontario's economy continue to emerge from the recession and will strengthen it moving forward.

This year the Ontario government is committing \$2.5 billion to designing, repairing and expanding highways and bridges – which includes \$1.36 billion for the repairs and expansion of southern provincial highways and bridges this year. This investment will support growing urban centres and rural communities and help businesses compete in the global marketplace.

The Ontario government continues to look forward and invest in our province's future. Over the next three years, the province plans to invest more than \$35 billion in provincial infrastructure, including \$12.8 billion in 2011-12. These investments are expected to create and preserve more than 300,000 local jobs.

The government of Ontario has been making historic investments in public infrastructure. After several decades of underinvestment, the Province has increased spending on infrastructure from \$2.6 billion in 2003-04 to \$14.1 billion in 2010-11. In total, Ontario has invested some \$62 billion in infrastructure since 2003, not including this year's planned \$12.8 billion. Ontario has developed a 10 year plan to underscore the Province's continued commitment to infrastructure – both to key investments themselves and to the strategic long-term planning they demand. Read the complete Ministry of Infrastructure plan at http://moi.gov.on.ca/en/infrastructure/building_together/index.asp

Sustainability is a top priority in all future plans to deal with congestion, accommodate population growth and ensure goods and people continue to move efficiently in Ontario. A sustainable transportation system will recognize and support our transportation needs while protecting our natural resources.

By maintaining our highway systems, exploring alternative fuel and technological advancements, as well as encouraging people to use public

transportation, we can ensure future generations are positively affected by the decisions we make today.

The Southern Highways Program provides a clear overview of where and how tax dollars are being spent on provincial highways in Southern Ontario. It lists the specific projects that will occur in 2011 and outlines the long-term projects planned through 2015.

Constant Innovation

The Ministry of Transportation is using innovative construction and repair techniques to reduce environmental impact, lower costs, and minimize impacts on users.

Tire Derived Aggregate as Embankment Fill

Tire Derived Aggregate (TDA) is embankment fill that consists of large volumes of shredded scrap tires. TDA is an alternative to using earth fill in the construction of highway embankments. The environmental benefits are twofold -- large volumes of used tires are diverted from landfill and stockpiles, and at the same time, comparable volumes of non-renewable aggregates are spared from consumption. Furthermore, material quality is not compromised.

TDA has been successfully used as fill in other jurisdictions since the early 1990's, including several states in the United States and recently in New Brunswick. The ministry is using TDA to construct embankments at the Boundary Road Bridge project on Highway 401 in Cornwall, which is expected to be completed in 2012. This project alone will recycle approximately 400,000 scrap tires. Based on the results of this trial project, the ministry will consider other sites and applications for use of TDA as a recycled engineered material in Ontario.

The ministry has been working with the Ontario Ministry of Environment on TDA fill to ensure adherence to environmental legislation, regulations and policies, and to identify and implement the necessary environmental risk mitigation strategies.

Uptake of this technology on a broader provincial scale -at 10 embankments per year, for example could divert about one-quarter to one-third of all scrap tires Ontario now generates annually.

Recycling Roads:

The use of Reclaimed concrete and asphalt pavements are ways in which Ontario's road-building helps the environment by recycling materials. Ontario's Ministry of Transportation (MTO) is a leader in the use of cold-in-place recycling, a technique that recycles a road's existing pavement right on the spot. This approach reduces greenhouse gas emissions and the demand for non-renewable resources. Compared to traditional paving methods, Cold-In-Place recycling:

- Emits 50% fewer greenhouse gases
- Consumes 62% fewer aggregates
- Costs 40 to 50% less than conventional treatments

Recycling Concrete

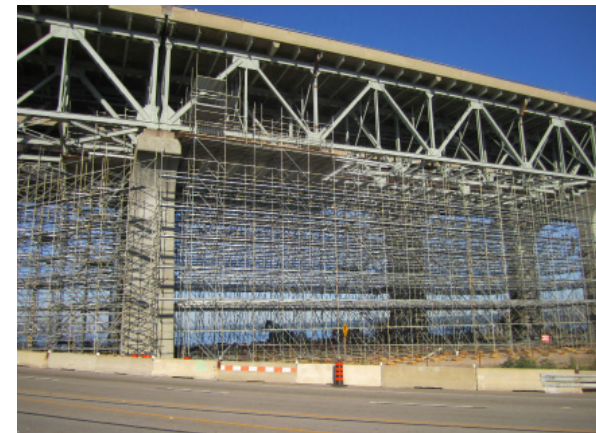
The Ontario Ministry of Transportation recycles waste concrete in new road base. Industrial waste materials such as ground granulated blast furnace slag and silica fume are incorporated into new concrete that is used for constructing structures, pavements and other highway components, reducing the consumption of cement.

Rubber Modified Asphalt

Rubber Modified Asphalt is hot-mix asphalt that is modified with ground rubber from waste tires. Rubber modified asphalt is reported to have beneficial engineering characteristics such as improved durability, flexibility, structural strength and resistance to cracking. It also provides a use for waste tires. Rubber modified asphalt is planned for six projects in southern Ontario in 2011.

Warm Mix Asphalt

Warm mix asphalt is mixed, handled, placed and compacted at a temperature typically 20 to 50 degrees Celsius lower than conventional hot mix asphalt. Warm mix asphalt needs less fuel to produce, and reduces emissions and odours during production and placement. It is targeted for 10% of MTO's asphalt tonnage in 2011 contracts.



Burlington Skyway Bridge Rehabilitation

Constant Innovation

High Occupancy Vehicle (HOV) Lanes

As part of a long-term strategy to improve the efficiency of highways, the province has introduced HOV lanes for cars with two or more passengers, public transit vehicles, inter-city bus carriers.

The new HOV lanes provide fast, reliable travel for HOV users at any time of the day - particularly during peak travel periods when other lanes can be slow and congested. They are designed to help move people through congested areas quickly by moving more people in fewer vehicles. HOV lanes encourage carpooling, transit use and improve air quality in the region.

In December 2005, the Government of Ontario opened the first freeway HOV lanes in the province on portions of Highways 403 and 404. In November 2010, over 16 kilometres of new HOV lanes on the QEW from Oakville to Burlington were opened to traffic.

The evidence to date shows that these lanes shorten driving time for all traffic. They help get people and goods to their destination safely and in less time. Preliminary studies show that HOV users are saving 16 minutes per day as compared to before the HOV lanes opened.

The province will continue the roll-out of the long-term HOV strategy, which calls for more than 450 kilometres of lanes along the 400-series highways in the Greater Golden Horseshoe, including sections of Highway 417 in Ottawa, by 2031. In 2011 construction of nearly 10 kilometres of HOV lanes on Highway 417 in Ottawa will be underway.

This extensive highway HOV lane system will help manage congestion, make our cross-regional transit systems more effective, and make movement of people and goods through the region more efficient.

For more information on Ontario's HOV lanes, please visit:
<http://www.mto.gov.on.ca/english/traveller/hov/>

Bicycle Policy

Bicycling is a key part of creating a sustainable transportation network that can support our transportation needs, improve our health and continue to help protect our environment for generations to come.

The Ministry of Transportation is currently reviewing its Bicycle Policy, in part to better accommodate cycling within the provincial highway network while ensuring our roads remain the safest in North America for all users. The review will draw on innovative approaches in other jurisdictions, including Quebec and British Columbia.

The review will also provide clarity on where and when to make special efforts to accommodate bicycling on provincial highways.

MTO is also updating its Bike Path Design Guidelines. This document will become the ministry's engineering design standard to safely accommodate cyclists on all types of highways and traffic volumes.

In 2010, partially paved shoulders were constructed on Highway 6 in the Mar to Tobermory/Manitoulin Island area as a pilot project to improve the safety of all road users, including cyclists. The ministry will be evaluating the effectiveness and safety of this project by developing a study guide and then proceeding with data collection and the review process.



Highway 6, Paved Shoulders, Mar to Tobermory area

Contract Delivery Models

Ontario is currently developing and implementing innovative contract delivery models to increase efficiency and facilitate the delivery of a robust highway construction program. We will continue working closely with our industry partners to develop and implement new models including Design Build and Construction Manager General Contractor.

Alternative Financing and Procurement

MTO is successfully using Infrastructure Ontario's Alternative Financing and Procurement (AFP) model in which private financing and expertise is used to build highway infrastructure while ensuring appropriate risk allocation, and public control and ownership of the assets.

The AFP model enables us to build needed highway infrastructure quickly and cost effectively, avoiding up-front capital costs and making final payment only upon substantial completion of the project.

MTO is using AFP to rebuild highway service centres, construct the Windsor Essex Parkway (WEP) and construct Highway 407 East extension.



Highway 7, Scugog River Bridge, completed foundations

2010 Completed Construction Highlights

In 2010, the Ontario government committed \$1.17 billion to expand and repair southern Ontario highways. Some of these projects that have been completed are highlighted below. A list of all major southern Ontario highway projects completed last year has also been included for reference.

New High Occupancy Vehicle (HOV) Lanes between Burlington and Oakville

In 2010, more than 16 kilometres of High Occupancy Vehicle (HOV) lanes were opened in both directions on the QEW between Guelph Line in Burlington and Trafalgar Road in Oakville. This is the longest stretch of HOV lanes in the Greater Toronto Area. These lanes will help ease congestion, save time and promote environmentally responsible transportation.

Construction included:

- Widening the QEW to four lanes in each direction
- Ramp and service road modifications
- Installation of traffic barriers and new sign structures
- Addition of new lighting and permanent signal lights
- Enhancements to road signs
- New pavement markings for cyclists and pedestrians crossing the QEW at Walkers and Appleby Line



QEW HOV lanes - After Construction

Rehabilitation of Highway 6 from Mar to Tobermory

In 2010, rehabilitation of 66 kilometres of Highway 6 from Mar to Tobermory was completed to make the highway safer and smoother. Improvements were made using Cold-In-Place recycling. This was the largest single Cold-In-Place resurfacing project ever completed by the Ministry of Transportation (MTO) in western Ontario.

Construction also included replacement or rehabilitation of culverts, adjustments to guide rails, and replacement of shoulders.

Highway shoulders were resurfaced and paved one-metre wide to enhance safety for all road users, including cyclists.

Highway 6 is not only a key recreational gateway between the north and south, but also acts as a critical lifeline for residents who live there.



Highway 6

Widening of Highway 401 from Woodstock to Cambridge

The project to widen Highway 401 from Woodstock to Cambridge will be completed in 2011, increasing highway capacity and safety on Ontario's busiest highway. This is the last of a series of three projects to widen Highway 401 to six lanes between Woodstock and Cambridge.

The work included: widening 15.3 kilometres of Highway 401 from four to six lanes; installation of a tall wall median barrier; removal of the CNR overpass, rehabilitation of the Blandford Road 5 and Oxford Road 22 underpass, widening and repair of the CPR Bridge, Horner Creek structure, and Blandford/Blenheim Township Road 8 structure, upgrading signs, replacing guide rail, the addition of emergency access ramps at Oxford Road 22 and tree planting to control drifting snow.



Highway 401

2010 Completed Construction Highlights

Widening and Rehabilitation of the Scugog River Bridge, Kawartha Lakes

Constructed in 1958, the Scugog River Bridge is located on Highway 7, between Kawartha Lakes Roads 4 and 15. In 2010, the bridge was successfully rehabilitated and widened to meet current standards and future needs. Construction included: widening of the Highway 7 approaches and a minor realignment of Highway 7. The foundation of the bridge was widened using micropiles, an alternative to standard methods.

Work completed also included drainage improvements and enhanced storm water treatment. The bridge now has a catch basin that captures surface water and directs it to a storm sewer system for treatment before discharging into the Scugog River.

The Scugog River Bridge improvements will accommodate any future widening of Highway 7, extend the overall life of the bridge, and enhance its safety for drivers.



Scugog River Bridge

Rehabilitation of Highway 409 in Toronto

The rehabilitation of Highway 409 from Highway 427 to Highway 401 was substantially completed in 2010 enhancing efficiency and safety for motorists. Some minor work remains for 2011. The project included: resurfacing the Highway ramps and local roadways, rehabilitation of retaining walls and 13 bridges, reconstruction of the median and shoulders, ramp modifications, the addition of a new tall wall barrier; and replacement of guiderails, damaged curbs and gutters, lighting, traffic signals and overhead signs. Repairs to the roadway's concrete base were done using both normal concrete and *Fast Track concrete* methods.

Fast Track concrete pavement repairs use precast concrete panels or fast-setting concrete methods to repair concrete slabs rapidly. *This allows the work to be completed* within one evening work-shift, minimizing disruption to the driving public.



Construction of Highway 409

2010 Southern Ontario Accomplishments

New Highways	90km
New Bridges	4
Highways Rehabilitated	800km
Bridges Rehabilitated	71

Multimodal Transportation:

Ontario's multimodal transportation system is vital to our economic prosperity. It is an integrated system that serves millions of people and carries 74 per cent of Canada's trade by road, rail, marine and air transportation. All modes of transportation play an important role in moving people and goods in the province. Ontario's highways link these different modes of transportation and connect the province with the rest of Canada and the United States.

2010 Completed Projects

Central Ontario

Hwy	Location	Type of Work
8	Fairchild Creek, Flamborough	Culvert replacement
9	West of Peel Rd. 50 to west of Peel Rd. 7, Peel (ISF)	Resurfacing
10	Highway 410 to Peel Rd. 9, Caledon	Resurfacing
10	Caledon Rd. 22 (Old School Rd.), Caledon	Traffic Signals
11	Memorial Ave. to Sundial Dr., Orillia	Median Barrier
11	Hwy 11 from Hwy 400 to Oro Medonte Line 5	Resurfacing
11	Oro Medonte Line 5 to Simcoe Road 49 (ISF)	Resurfacing
12	Atherly to Gamebridge	Resurfacing
89	Simcoe Road 13 to the Simcoe / Dufferin Boundary	Resurfacing
140	Hwy 3 to Niagara Road 23 in Welland (ISF)	Resurfacing
400	North Junction Rd. to Hwy 12 to Simcoe Road 16	Resurfacing
400	Forbes Road to Hwy 93 southbound and CPR bridge northbound	Resurfacing/Bridge rehabilitation
400	Steeles Avenue to North of Langstaff Road	Resurfacing
400	King Road	Interchange improvements
401	Highway 35/115 to Stevenson Road	New Interchange/Resurfacing
401	New patrol yard on Hwy 401 near Hurontario Street	New Patrol yard
401	Don River Bridge	Bridge rehabilitation
401	East and west of Rougemount Dr., Scarborough	Noise barrier
401	Hwy 401/404 ramp, Toronto	Bridge rehabilitation
401	Winston Churchill Blvd. to Trafalgar Rd., Milton	Resurfacing
401	First Line, Milton	Bridge rehabilitation
403	Hwy 403/407 interchange to Hwy 6, Halton, Hamilton (ISF)	Resurfacing
403	Wilson Street westerly to the Hamilton / Brant boundary	Resurfacing

continued...

2010 Completed Projects

Central Ontario

Hwy	Location	Type of Work
403	Desjardin Canal Bridge in Hamilton	Bridge rehabilitation
403	Waterdown Road Interchange (Partnership with the City of Burlington)	New Interchange/widening
406	Merritt Road	New Bridge
427	QEW to Hwy 401 Northbound express lanes, Toronto	Bridge rehabilitations/ Reconstruction
QEW	Hurontario St. interchange and Mississauga Rd. to Dixie Rd., Peel	Interchange reconstruction/resurfacing
QEW	South of Northshore Blvd. to Brant St., Burlington	Resurfacing
QEW	Lyon's Creek Road north of Netherby Road in Niagara Falls	Resurfacing
QEW	Garden City Skyway in St. Catharines	Bridge rehabilitation
Various	Various locations within Central Ontario	Bridge rehabilitations
Various	Various locations within Central Ontario	Selective resurfacing

Northeastern Ontario

Hwy	Location	Type of Work
11	North Waseosa Lake Rd, Huntsville	Resurfacing - Frost Heave repair
11	Sedore Rd Underpass, south of Gravenhurst	Bridge rehabilitation
11	Muskoka Rd. 13 Interchange, Severn River	Bridge rehabilitation
11	Vernon Lake, South bound lane, Huntsville	Bridge Replacement
11	Muskoka Road 41/6 (Doe Lake Rd) northerly, Gravenhurst	Resurfacing
17	East of Hwy 533 easterly, east of Mattawa	Resurfacing
35	Hwy 60 to Hwy 117, Dorset	Resurfacing

2010 Completed Projects

Western Ontario

Hwy	Location	Type of Work
3	Renton to Jarvis	Resurfacing
6	Arthur to Mt. Forest	Reconstruction/bridge rehabilitation-replacement/passing lanes
6	Grey Rd. 9 to Durham	Resurfacing/passing lane
6	Mar to Tobermory (ISF)	Resurfacing
7	Shakespeare to New Hamburg	Culvert replacements
7	Hwy 4 to Middlesex Rd. 50	Resurfacing
7 & 8	Courtland Ave. to Hwy 7 IC, Kitchener (ISF)	Resurfacing
8	Goderich to Clinton	Resurfacing/intersection improvements/truck climbing lane
8	Seaforth to Mitchell	Resurfacing/bridge rehabilitation
9	Bruce Rd. 7 to Bruce Rd. 4 / 20, east of Kincardine	Resurfacing
9	Mildmay to Clifford (ISF)	Resurfacing
10	Dufferin Rd. 10, north of Orangeville	Intersection improvements
21	Huron Rd. 84 to Bayfield	Resurfacing
21	Goderich to Sheppardton (ISF)	Resurfacing
21	Glen's Hill Rd. to Huron Rd. 86, Amberley	Resurfacing
23	Newry to Perth Line 84, south of Listowel (ISF)	Resurfacing
26	Meaford to Thornbury	Resurfacing/passing lane
26	Grey Rd. 40 and Camperdown Rd.	Intersection improvements
40	Indian Rd., Sarnia	Intersection improvements
40	McGregor Rd. to Hwy 402, Sarnia	Resurfacing
40	Hwy 401 to Longwoods Rd., south of Chatham	Resurfacing/bridge rehabilitation
85	Various Interchanges From Hwy 7 to Waterloo Rd. 15, Waterloo	Resurfacing
401	Orford Rd. to Currie Rd., eastbound lanes, Dutton (ISF)	Resurfacing
401	Essex Rd. 24 to Bloomfield Rd., eastbound lanes, Essex Rd. 42 to 2.2 km East of Drake Rd, westbound lanes, Chatham (ISF)	Resurfacing
401	Leamington to Windsor - Phase 2 - Belle River Facility	New Salt Storage Facility
401	Oxford Rd. 6 to Oxford Rd. 12 and Interchange ramps, London to Woodstock	Resurfacing
402	Strathroy to London	Selective Resurfacing
403	Hwy 401 to Brant Rd. 25, east of Woodstock	Resurfacing
403	Brant Rd. 25 to Paris Rd., Brantford	Resurfacing

2010 Completed Projects

Eastern Ontario

Hwy	Location	Type of Work
7	Hwy 417 to Carleton Pl. - Ottawa - Phase 2 - Jinkinson Rd. westerly to Ashton Station	2 to 4 lane widening
7/35	Angeline St. to Cty. Rd 18 and Jct. Hwy 7 to Colbourne St.	Resurfacing
17	Constable Philip Shrive and CPR overhead, Renfrew	Bridge rehabilitations
17	Renfrew Rd. 61 to Logos Land Rd., Renfrew	Resurfacing
17	Point Alexander to west of Rolphton	Resurfacing
28	Stoney Lake Rd. to Young's Point	Resurfacing/intersection improvements
34	Hawkesbury Creek / OCR Bridge, Hawkesbury	Bridge rehabilitation
37	Tweed to Hwy 7	Resurfacing
41	North of Denbigh to Griffith	Resurfacing
60	Renfrew to Renfrew Rd. 61	Resurfacing
62	Cleveland Rd. to Hastings Rd. 620, Ormsby	Reconstruction/bridge replacement
62	Hickey Rd. northerly to Maynooth	Resurfacing
62	Bannockburn to Cleveland Rd.	Resurfacing
115	Peterborough Rd. 10 to Hwy 7A, south of Peterborough (ISF)	Resurfacing
401	Leeds-Grenville Rd. 32, Maitland Rd. and Mallorytown Rd. underpasses, east of Gananoque	Bridge rehabilitations
401	Herley Rd. underpass, Colborne (ISF)	Bridge rehabilitation
401	Donovan Creek Bridge, Mallorytown (ISF)	Bridge rehabilitation
401	Belleville to Trenton	Median barrier repair/replacements
401	Camden east to Wymans Rd.	Selective resurfacing, fully paved shoulders
401	Brockville, westbound lanes	Resurfacing

continued...

2010 Completed Projects

Eastern Ontario

Hwy	Location	Type of Work
401	Kingston - Hwy 15 to County Rd. 38 - Italia Lane	Road realignment
416	Barnes Creek, south Kemptville	Culvert replacement
417	Dunvegan Rd. and Stormont-Dundas-Glengarry Rd. 23 underpasses, Dunvegan	Bridge rehabilitations
417	South Indian Creek culverts, Limoges	Culvert rehabilitations
417	Hwy 7 to Ottawa Carleton Rd. 163, eastbound lane, Ottawa (ISF)	Resurfacing
417	Woodroffe Ave. to Hwy 416, Ottawa	Resurfacing

2011 Construction Highlights

This year the Ontario government is investing \$1.36 billion for the repair or expansion of southern provincial highways and bridges. Some of the many highway projects starting this year are highlighted below along with maps and lists of all major southern highway projects underway or starting between 2011 and 2015.

Major highway projects are generally greater than \$1 million in value. The Ministry of Transportation also contracts hundreds of smaller value highway projects that are not included in this document. These projects include spot improvements and strategies to maintain the transportation network in good repair until a major investment is required or minor work to improve highway operations.

Widening and New High Occupancy Vehicle (HOV) lanes for Highway 417, Ottawa

Widening of Highway 417 between Highway 7 and Eagleson Road and new High Occupancy Vehicle (HOV) lanes will improve the flow of goods and services in the area and support multimodal transportation. This section of Highway 417 is used by commuters, tourists and commercial vehicles travelling through Ottawa. This project will help ease congestion, as traffic on the highway is expected to grow substantially by the time construction is completed.

Work will begin in 2011 and includes the widening of Highway 417 from four to eight lanes between Eagleson Road and Palladium Drive.

This will include one general purpose lane and one HOV lane in each direction. The highway will also be widened from four to six lanes between Palladium Drive and Highway 7.

Also, the existing pavement will be rehabilitated and replaced; the Carp River Bridge will be rehabilitated and widened; while the Eagleson Road, Huntmar Road and Carp Road underpasses will be rehabilitated; and the Watts Creek culvert replaced.

The expansion of the highway and the introduction of HOV lanes will reduce travel times and encourage car pooling. This will help reduce greenhouse gas emissions.

Rehabilitation of Highway 26, Woodford to Meaford

Rehabilitation for this section of Highway 26 from Woodford to Meaford will improve overall road condition, safety and drainage. Work will begin in 2011 with pavement rehabilitation of 10.1 kilometres that will include widening of the existing lanes. The ministry will reuse the existing shoulder material and recycle the existing asphalt.

Work will also include:

- A new truck climbing lane to allow traffic to pass slower moving vehicles
- New turning lanes at Meaford Range Road 9th Line/Grey Road 112 and Peel Street; and 7th Line and Ridge Road
- The addition, replacement, rehabilitation and extension of several culverts
- Upgrading guide rail and permanent signing
- Modifications to entrances

Rapid Bridge Replacement of the Carling Avenue Eastbound Bridge, Ottawa

Crews will use groundbreaking technology to lift, move and replace the Carling Avenue Eastbound Bridge in Ottawa in just 17 hours during the last weekend in July.

The rapid replacement will help to reduce costs and limit environmental impacts, while ensuring ongoing safety and good traffic flow, as well as creating 94 jobs.

Preliminary work is underway now to prepare the site, which may cause some traffic delays. The replacement bridge is also currently being built in an off-site location.



Carling Avenue Bridge preparation

2011 Construction Highlights

Expansion of Highway 406 from Welland to Port Robinson

In 2011 work will begin to expand Highway 406 to four lanes from East Main Street to north of Port Robinson Road. This will further reduce congestion and improve the movement of goods and services across Highway 406 through Welland. This will be the final phase of the twinning program for this stretch of Highway 406.

Other work includes:

- A new underpass at Port Robinson Road intersection of Highway 406
- Replacement of the existing at grade intersections with interchanges Merrit Road and Woodlawn Road
- Replacement and rehabilitation of structures
- Relocation of the Trillium Railway crossing at Daimler Parkway
- Construction of a roundabout at East Main Street
- A commuter parking lot at Woodlawn
- Upgraded illumination
- Upgrades to drainage and storm-water management measures

Rehabilitation of the Medway Creek Bridge and Highway 7 from Middlesex Road 50 to Perth Line 9 in St. Marys

The rehabilitation of the Medway Creek Bridge between Highway 4 and Highway 23 will extend the life of the structure and improve driving conditions. The project also includes the rehabilitation of Highway 7 for 17.8 km from Middlesex Road 50 (Prospect Hill Road) east to Perth Line 9.

The improvements include:

- Replacement of the existing pavement
- New left turn lanes at the Cobble Hills/James St. Intersection
- New roundabouts at Oxford 119/Perth Road 118, and Perth County Line 9
- Rehabilitation of five bridges
- Improvements to the profile of Highway 7
- Rehabilitation and replacement of culverts
- Ditch improvements
- Private and commercial entrance modifications
- Drainage and roadside safety improvements

Highway 404 Extension in East Gwillimbury

Highway 404 will be extended from north of Queensville Sideroad to Woodbine Avenue/Ravenshoe Road to meet traffic demands and move people more efficiently. The project includes construction of a four-lane rural freeway with a grass median.

Additional work includes:

- Reconstruction of the Woodbine/Ravenshoe intersection
- Provisions for bicycle routes
- Illumination and traffic signal upgrades
- Landscape plantings
- Measures to prevent snow drift
- New ramps, overpass structures, storm water retention ponds, and new traffic signals
- A new commuter lot on the east side of Woodbine Avenue
- A pre-cast culvert for animal crossings

2011 Southern Ontario Planned Accomplishments

New Highways	126km
New Bridges	9
Highways Rehabilitated	451km
Bridges Rehabilitated	71

Borders and Gateways

Our border crossings are vital to both the Ontario and national economies. Every year, approximately 35 million vehicles cross the Ontario-U.S. border including 6.1 million trucks. Each year, \$223 billion traverses international bridge crossings linked to Ontario highways. Canada's three busiest crossings – Windsor, Fort Erie and Sarnia – account for 60 per cent of Canada's road trade with the U.S. With 180 million consumers within a one-day truck trip of Ontario, we must keep our borders efficient to maintain this strategic advantage.

The Ontario government has partnered with Quebec and the federal government to develop an infrastructure policy and regulatory strategy to support international trade and economic growth for the future through the Continental Gateway initiative. This initiative includes strategic ports, airports, intermodal facilities and border crossings as well as essential road, rail and marine infrastructure.

Through strategic investments in our borders and gateways and in partnering with others, the Ontario government is committed to improving traffic flow at all of Ontario's gateways to keep people moving safely and efficiently, to help build prosperity for Ontario families and to strengthen our economy.

For more information on Ontario border improvements, please visit:
www.ontario.ca/transportation

NIAGARA GATEWAY:

Widening the QEW, St. Catharines

The QEW is a major economic trade route in Ontario. Six-laning and other improvements will address capacity, safety and driving conditions for the high volumes of local, tourist and border traffic using the QEW through St. Catharines. Construction has been in full swing since mid-2007. Lanes are open to traffic with minor work expected to be completed in 2011. Along with widening the roadway from four to six lanes, work includes: reconstructing and reconfiguring interchanges, replacing Lake Street, Martindale, Geneva Street and Welland Avenue bridges, widening Third Street overpass, rehabilitation of Ontario Street and Niagara Street bridges, installing tall wall median barrier, new storm drainage, high mast lighting, landscaping and aesthetics work.

WINDSOR GATEWAY:

Since 2004 MTO has been starting the work needed to expand the Windsor Gateway. The following Highway 401 projects have been competed;

- Phase 1, Highway 77 to Essex County
- Phase 2, Manning Road to Puce Road
- Phase 3, Essex Road 27 to Highway 77
- Phase 4, Widening Highway 3 to Manning Road
- Phase 5, Puce Road to Essex Road 27

The work along the 47 kilometres of the Windsor to Tilbury corridor will improve safety and traffic flow on one of Canada's most important trade corridors.

The Ontario and Canadian governments cost-shared the first three phases of widening under the Strategic Highway Infrastructure Program. Earlier phases have been cost-shared under the Border Infrastructure Fund and Phase 4 through the Let's Get Windsor-Essex Moving strategy.

Let's Get Windsor-Essex Moving Strategy

Ontario is working with the federal government, local municipalities and other agencies to make investments that will address traffic flow, congestion and efficiency at the border crossings in Windsor-Essex, under the *Let's Get Windsor-Essex Moving* (LGWEM) strategy.

The *Let's Get Windsor-Essex Moving* strategy is a \$300 million, joint Canada-Ontario investment aimed at improving local connections to the border crossings in Windsor-Essex. Since the strategy began in 2004, all but two projects have been completed.

Continuing in 2011:

- Lauzon Parkway Extension
Environmental Assessment and Master Plan
- Windsor-Detroit Tunnel Canadian
Plaza Detail Design

Borders and Gateways

The Windsor-Essex Parkway

The Ontario Ministry of Transportation (MTO), in partnership with Transport Canada, the U.S. Federal Highway Administration and the Michigan Department of Transportation conducted the Detroit River International Crossing (DRIC) study with the purpose of addressing the safe and efficient movement of people and goods across the Canada-U.S. border in the Windsor-Detroit Gateway to support the economies of Ontario, Michigan, Canada and the U.S.

MTO led the Canadian study in coordination with Transport Canada. Through extensive technical studies and public consultation the DRIC study team identified a new end-to-end border transportation system which includes The Windsor-Essex Parkway, along with a new inspection plaza and international bridge in the Brighton Beach industrial area of west Windsor. Environmental approvals were received in 2009.

In the federal budget presented on June 6, 2011, Canada committed up to \$1 billion for funding for The Windsor-Essex Parkway. This is a follow-up to the 2007 federal budget commitment to pay up to 50 per cent of the eligible capital costs for The Windsor-Essex Parkway with an initial \$400 million commitment. Funding comes from the Gateways and Border Crossings Fund. Ontario committed in the 2008 Provincial Budget to fully fund its share of the costs for The Windsor-Essex Parkway.

The Windsor-Essex Parkway will be the most significant single highway investment made in Ontario history. It is the first transportation related project being delivered using Ontario's Alternative Financing and Procurement model which utilizes the private sector's expertise and innovation to design, build, finance and maintain The Windsor-Essex Parkway. The Windsor Essex Mobility Group (WEMG) was selected as the successful private sector partner in November 2010. Financial close with WEMG was reached in December 2010. The value of the contract to WEMG is approximately \$1.4 billion in today's dollars. Over the 30-year life of the contract the total future payments will add up to approximately \$2.2 billion. Full construction is scheduled to begin in the summer of 2011 with the road open to traffic in late 2014.

The Windsor-Essex Parkway is unique in its design and features an 11 kilometre below-grade freeway with transportation benefits, green space, recreational trails and community connections. The Ontario government will retain ownership of The Windsor-Essex Parkway while benefiting from private sector expertise.

Initial construction of two bridges and a noise barrier along Highway 401 at the southern end of the project began in December 2009 and was completed in spring 2011.

Continuing in 2011:

- Start of full construction on The Windsor-Essex Parkway
- Start of construction phase of the Trillium Court relocation project. Trillium Court is a social housing development in the Town of LaSalle and the property on which it stands was identified as being required for construction of the Parkway
- Utility relocations
- Building demolitions



Windsor-Essex Parkway Artistic Rendering

PARTNERSHIPS

New Hunt Club Road Interchange on Highway 417

The province is partnering with the City of Ottawa to finance the construction of the Hunt Club Interchange. This is a City of Ottawa initiative that will connect Hunt Club Road to Highway 417. This improvement will help keep goods and services flowing and relieve traffic congestion through the city's east-end by providing direct access to the south-end of the City and the Ottawa International Airport.

FLOW

In March 2007, the federal government announced an investment of up to \$962 million to contribute to a partnership with the Ontario government and five municipalities to generate a combined investment of close to \$4.5 billion in public transit and highway infrastructure projects in the Greater Toronto Area (GTA). The FLOW initiative is a long-term transportation action plan to reduce gridlock, improve the environment and increase economic growth in the GTA.

The FLOW initiative includes the following three key highway projects:

Widening Highway 7 in Durham Region

An advance structure project started in 2008 for the East Duffins Creek Bridge, and was completed in the fall 2009.

Four-laning of Highway 7 for 12 kilometres, from Brock Road to Highway 12, began in 2010 and is scheduled to be opened to traffic by the end of 2012. The future Highway 407/Highway 7 Bridge west of Brooklin is included as part of the Highway 7 widening project.

Extending Highway 404 Northerly

The extension of Highway 404 north from Green Lane to Ravenshoe Road will help take commuter and recreational traffic off local roads, reduce travel times, and support economic development. In order to expedite construction of this project and open lanes to traffic to Ravenshoe Road in 2012, per the FLOW commitment, this project is being completed in four phases.

- Construction of Phase 1, Highway 404 northbound bridge over Green Lane, was completed in June 2009
- Construction of Phase 2, two bridges over Mount Albert Road was completed in October 2009
- Construction of Phase 3, mainline extension from Green Lane to Queensville Sideroad, started in July 2010 and is scheduled to be complete in December 2012
- Construction of Phase 4, mainline extension from Queensville Sideroad to Ravenshoe Road, is scheduled to begin in June 2011 and be completed in December 2012

Once Phase 3 and Phase 4 are completed, the lanes will be open to traffic in December 2012.

continued...

PARTNERSHIPS

Extending Highway 407 Easterly

Provincial approval was received on June 3, 2010 for the Highway 407 East Environmental Assessment (EA) Study which will protect the entire corridor, subject to a number of conditions.

On March 10, 2011 a seamless plan was announced to extend Highway 407 East from Brock Road in Pickering to Highway 35/115 by 2020 with the following key dates:

- By late 2015 – 22 kilometres of new east-west highway from Brock Road in Pickering to Harmony Road in Oshawa, and a 10 kilometre north-south highway (West Durham Link (WDL) connecting Highway 407 East to Highway 401 will be open to traffic
- By 2017 – Highway 407 East from Harmony Road to Taunton/East Durham Link will be open to traffic

- By 2020 - the section from Taunton/East Durham Link to Highway 35/115, and a 10 kilometre north-south highway (East Durham Link) connecting Highway 407 East and Highway 401 will be open, completing the project.

On April 28, 2011, Infrastructure Ontario released the Request for Proposals (RFP) to the three short-listed teams to submit proposals to design, build, finance and maintain phase one of the new Highway 407 East. Highway 407 East will be a tolled highway that will be publicly owned. The government will retain the revenues generated by the tolls, set the toll rates and establish high customer service standards



Future Highway 407



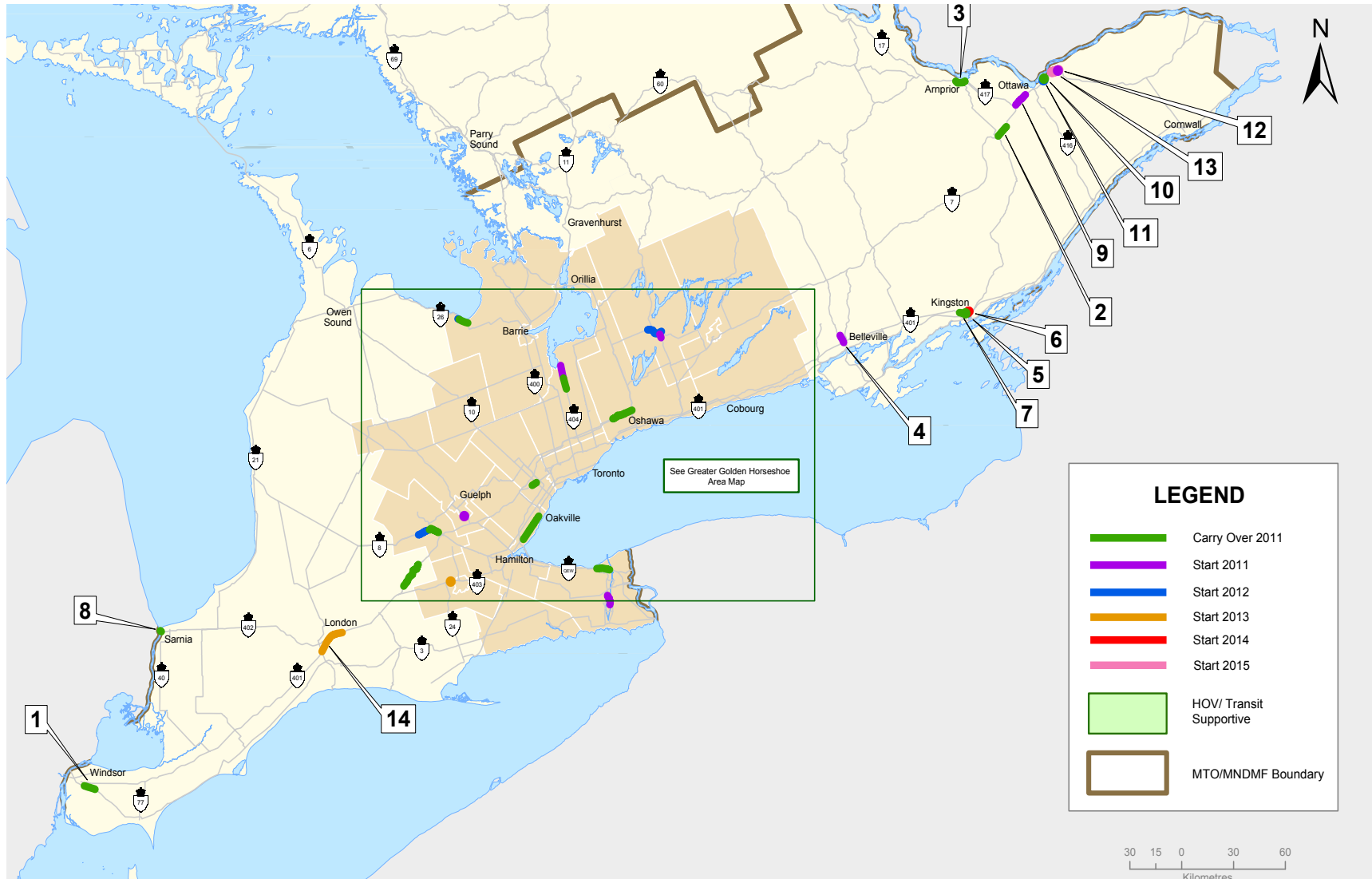
On-going work to implement Highway 407 East



Construction of a bridge on Highway 7 in Whitby as part of the on-going work

Expansion Projects

Southern Ontario Expansion 2011 to 2015



Expansion Projects

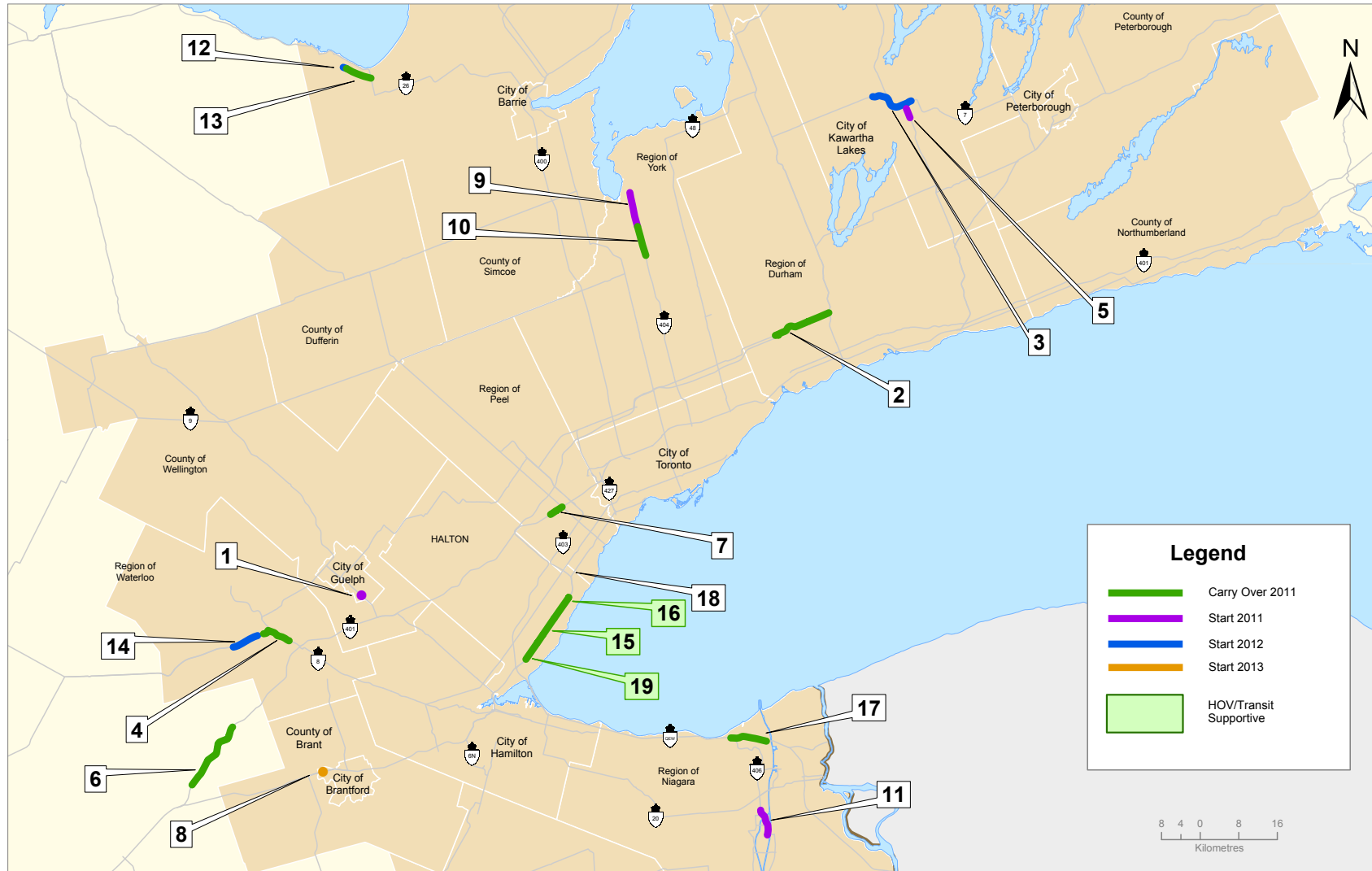
Southern Ontario Expansion 2011 to 2015

Map #	Hwy	Region	Location	Type of Work	Target Completion Date
1	3	WR	Leamington to Windsor - Phase 2 - Essex Cty. Rd. 11 to West Jct. Essex Cty. Rd. 34	2 to 5 lane widening	2012
2	7	ER	Hwy 417 to Carleton Pl. - Phase 3 of 3 - Ashton Station Rd. to Carleton Place	2 to 4 lane widening/bridge rehabilitation	2011
3	17	ER	Arnprior By-Pass - Phase 1 - Regional Road 29 to Division Street	2 to 4 lane widening	2012
4	62	ER	Hwy 401 to Foxboro, Belleville	2 to 4 and 5 lane widening	2013
5	401	ER	Hwy 15 to Frontenac Cty. Rd. 38 - Phase 3B - Division St., Kingston	Interchange improvements	2012
6	401	ER	Hwy 15 to Frontenac Cty. Rd. 38 - Phase 4 - Montreal St. and CNR overheads, Kingston	Bridge replacement/widening	2015
7	401	ER	Hwy. 15 to Frontenac Cty. Rd. 38 - Phase 2 - West of Sydenham Rd. to west of Montreal St., Kingston	4 to 6 lane widening	2012
8	402	WR	Bluewater Bridge to east of Murphy Rd., Sarnia (BIF)	2 to 4 westbound lane widening	2012
9	417	ER	Eagleson Rd. to Hwy 7, Ottawa (HOV lanes)	4 to 8 and 4 to 6 lane widening	2013
10	417 - OQW	ER	Hwy 416 to Anderson Rd. (Phase 3A) - Carling Ave. Eastbound Bridge, Ottawa	Bridge replacements/widening	2011
11	417 - OQW	ER	Hwy 416 to Anderson Rd. (Phase 3D) - Carling Ave. Westbound and Kirkwood Ave. Bridges, Ottawa	Bridge replacements/widening	2013
12	417 - OQW	ER	Hwy 416 to Anderson Rd. - Phase 4B - Cyrville Rd. Bridge, Ottawa	Bridge replacement	2011
13	417 - OQW	ER	Hwy 416 to Anderson Rd. -Phase 5 Nicholas St. to Ottawa Road 174, Ottawa	6 to 8 lane widening, bridge replacements/ rehabilitation/widenings	2015
14	401	WR	Colonel Talbot Rd. to Veterans Memorial Parkway, London including Wonderland Road and Veterans Memorial Pkwy	New Interchange/ Interchange Improvements	2016

NOTE : Project timing is subject to change based on funding, planning, design, environmental approval, property acquisition and construction requirements.

Expansion Projects

Greater Golden Horseshoe Expansion 2011 to 2015



Expansion Projects

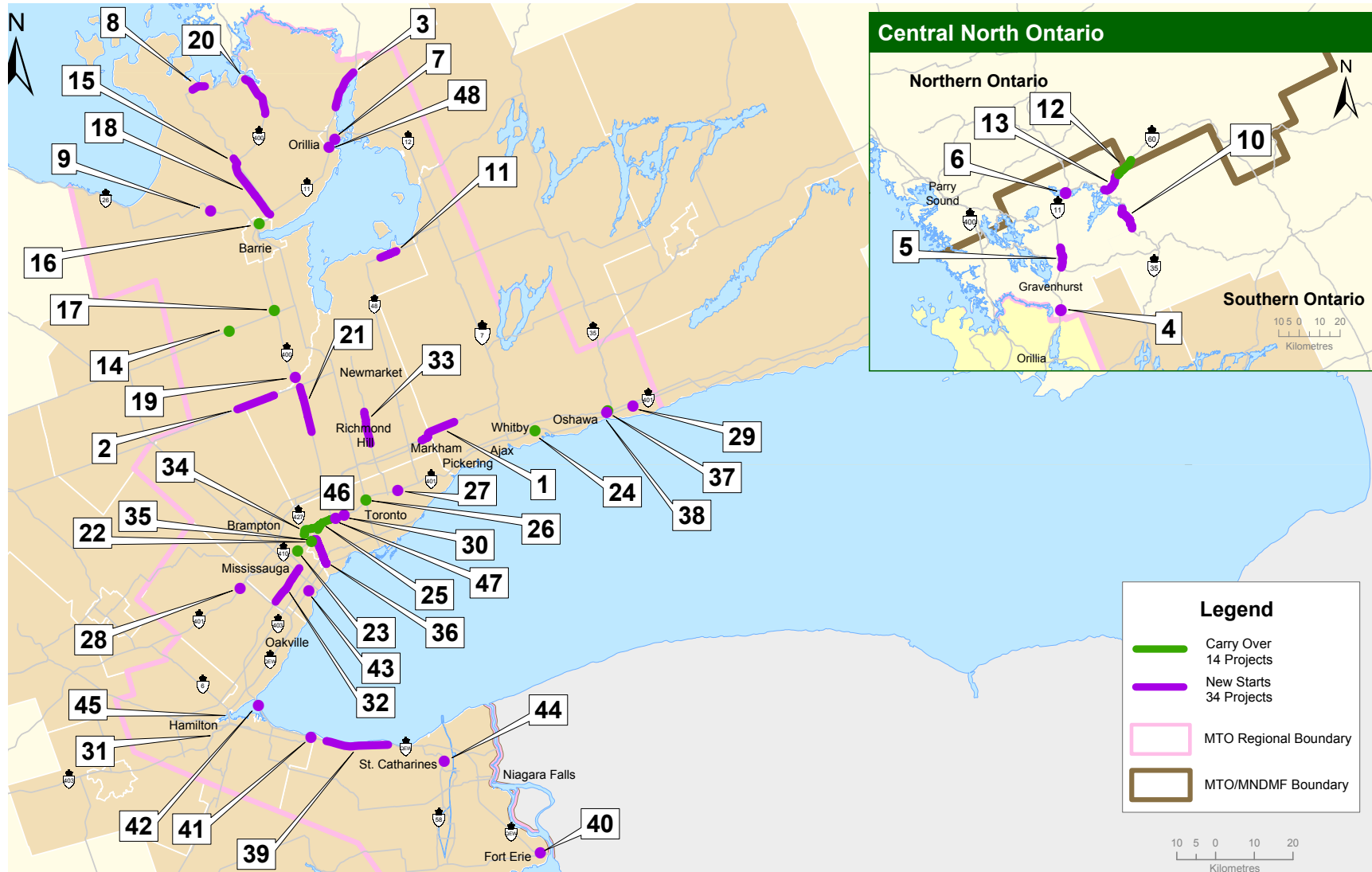
Greater Golden Horseshoe Expansion 2011 to 2015

Map #	Hwy	Region	Location	Type of Work	Target Completion Date
1	6	WR	Hanlon Expressway - Laird Rd., Guelph	New interchange	2013
2	7	CR	Brock Rd. (Pickering) to Hwy 12, Durham (FLOW)	2 to 4 lane widening	2012
3	7	ER	Lindsay By-Pass - Phase 2 - Victoria Cty. Rd. 36 to Angeline Street	2 to 4 lane widening	2013
4	8	WR	Kitchener - Waterloo Expressway - Grand River to Highway 401 (BCF)	4 to 6 & 4 to 8 lane widening / resurfacing	2013
5	35	ER	Lindsay By-Pass - Phase 1 - Highway 7, southerly 2.0 km.	4 to 5 lane widening	2012
6	401	WR	Woodstock to Cambridge - Phase 3 of 3 - Oxford Rd. 2 to Drumbo Rd.	4 to 6 lane widening	2011
7	401	CR	Hwy 410 to Hurontario St., Peel (HOV Supportive)	New interchange/widening	2013
8	403	WR	Oak Park Interchange, Brantford (Partnership with Brantford)	Interchange improvements/ bridge rehabilitation	2014
9	404	CR	Queensville Side Rd. to Ravenshoe Rd., York (FLOW), Phase 4 of 4	New 4 lane highway	2012
10	404	CR	Green Lane to Queensville Side Rd., York (FLOW), Phase 3 of 4	New 4 lane highway	2012
11	406	CR	Port Robinson Rd. to Main St., Niagara	2 to 4 lane widening	2014
12	26N	CR	Wasaga to Collingwood - Sixth Line to Pretty River (Phase 3B), Simcoe	2 to 5 lane widening	2013
13	26N	CR	Wasaga to Collingwood - Sixth line to existing Hwy 26 (Phase 3A), Simcoe	New 4 lane highway	2012
14	7 & 8	WR	Fischer-Hallman Rd. to Courtland Ave., Kitchener	4 to 6 lane widening	2015
15	QEW	CR	Burloak Dr. to Third Line, Halton (HOV lanes)	6 to 8 lane widening	2011
16	QEW	CR	Third Line to Trafalgar Rd., Halton (HOV lanes)	6 to 8 lane widening	2011
17	QEW	CR	Seventh St. to Garden City Skyway, Niagara (BIF)	4 to 6 lane widening	2011
18	QEW	CR	Commuter Parking Lot at Erin Mills, Peel	Commuter Parking Lot	2012
19	QEW	CR	Guelph Line to Burloak Dr., Halton (HOV lanes)	6 to 8 lane widening	2011

NOTE : Project timing is subject to change based on funding, planning, design, environmental approval, property acquisition and construction requirements.

Rehabilitation Projects

Central Ontario Rehabilitation 2011



Rehabilitation Projects

Central Ontario Rehabilitation 2011

Map #	Hwy	Status	Location	Type of Work	Target Completion Date	Project Length (kms)
1	7	New	Brock Rd. to Durham Rd. 30, Durham	Resurfacing	2011	10.1
2	9	New	Hwy 27 to Simcoe Rd. 10, York	Resurfacing	2011	10
3	11	New	Laclic St. to South Sparrow Lake Rd., Simcoe	Resurfacing	2011	10.6
4	11	New	Killworthy, Sparrow Underpass, Gravenhurst	Bridge rehabilitations	2011	n/a
5	11	New	Prev Resur,Hwy118toMuskRd117,Bracebridge	Resurfacing	2011	10
6	11	New	Vernon Lake, Northbound lane, Huntsville	Bridge rehabilitation	2012	n/a
7	12	New	CNR Bridge in Orillia, Simcoe	Bridge replacement	2011	n/a
8	12	New	Simcoe Rd. 37 to Hwy 93, Simcoe	Resurfacing	2012	3.5
9	26	New	Simcoe County Rd. 28, Simcoe	Signal installation	2011	n/a
10	35	New	Prev Resurf Musk Road 117 s'ly, Dorset	Resurfacing	2011	12.4
11	48	New	South of York Rd. 9 to 4 km north of York Rd. 9, York	Resurfacing	2011	4.4
12	60	Underway	Algonquin Park West Gate westerly	Resurfacing	2011	9.6
13	60	New	Hwy 35 to Oxtongue Lake Narrows, Dwight	Resurfacing	2011	9.4
14	89	Underway	Nottawasaga River, Simcoe	Bridge rehabilitation	2011	n/a
15	93	New	Waverley Rd. to north of Hillsdale, Simcoe	Truck climbing lane/traffic signals	2012	1.6
16	400	Underway	St. Vincent St., Simcoe (ISF)	Bridge rehabilitation	2011	n/a
17	400	Underway	Innisfil Creek, Simcoe (ISF)	Culvert rehabilitation	2011	n/a
18	400	New	Hwy 11 to Hwy 93, northbound, Simcoe	Resurfacing/bridge rehabilitations	2013	16.2
19	400	New	Hwy 88 interchange, Simcoe	Interchange reconstruction	2011	n/a
20	400	New	Simcoe Rd. 19 to north junction Hwy 12/400 interchange, Simcoe	Resurfacing	2011	11
21	400	New	King Rd. to Hwy 9, York	Resurfacing	2011	12
22	401	Underway	Renforth Dr., Toronto (ISF)	Bridge rehabilitations	2011	n/a
23	401	Underway	Dixie Rd., Peel (ISF)	Bridge rehabilitation	2011	n/a
24	401	Underway	CNR Spurline, CNR Subway bridges in Oshawa, Durham	Bridge rehabilitation	2011	n/a

continued...

NOTE : Project timing is subject to change based on funding, planning, design, environmental approval, property acquisition and construction requirements.

Rehabilitation Projects

Central Ontario Rehabilitation 2011

Map #	Hwy	Status	Location	Type of Work	Target Completion Date	Project Length (kms)
25	401	Underway	Jane St. to Kipling Ave., westbound collectors, Toronto	Reconstruction/bridge rehabilitation	2013	5.9
26	401	Underway	Hogg's Hollow, eastbound and westbound express, Toronto	Bridge rehabilitation	2013	n/a
27	401	New	Warden Ave., Toronto	Bridge rehabilitation	2013	n/a
28	401	New	Trafalgar Rd., Peel	Bridge rehabilitation	2011	n/a
29	401	New	Mill St. & Morgan Rd., Durham	Bridge rehabilitation	2011	n/a
30	401	New	Keele St., Toronto	Bridge replacement	2013	n/a
31	403	Underway	Various locations, Hamilton	Bridge rehabilitation	2012	n/a
32	403	New	Central Parkway to Winston Churchill Blvd., Peel	Resurfacing	2011	10.5
33	404	New	Aurora Rd. to Stouffville Rd., York	Resurfacing	2011	8.3
34	409	Underway	Hwy 401 to Hwy 427, Toronto	Resurfacing/bridge rehabilitations/ median barrier replacement/ highway lighting	2011	6.5
35	427	New	QEW to Hwy 401, southbound collectors, Toronto	Reconstruction/bridge rehabilitations	2013	7.31
36	427	New	QEW to Hwy 401, northbound collectors, Toronto	Reconstruction/bridge rehabilitations	2014	7.31
37	35/115	Underway	Wilmot Creek & Farewell Creek, Durham (ISF)	Culvert rehabilitation	2011	n/a
38	35/115	New	Newcastle, CPR Overhead, Durham	Bridge rehabilitations and Commuter Parking Lot	2012	n/a
39	QEW	New	Victoria Ave. to east of Casablanca Blvd., Niagara bound, Niagara	Resurfacing	2011	16
40	QEW	New	Bertie St., Niagara	Bridge rehabilitation	2011	n/a
41	QEW	New	Fifty Rd., Winona Rd., Glover Rd., Fruitland Rd., Millen Rd., Grays Rd., Hamilton	Bridge rehabilitations	2012	n/a
42	QEW	New	Burlington Bay Skyway, Toronto bound, Halton, Hamilton	Bridge rehabilitation	2012	n/a

continued...

NOTE : Project timing is subject to change based on funding, planning, design, environmental approval, property acquisition and construction requirements.

Rehabilitation Projects

Central Ontario Rehabilitation 2011

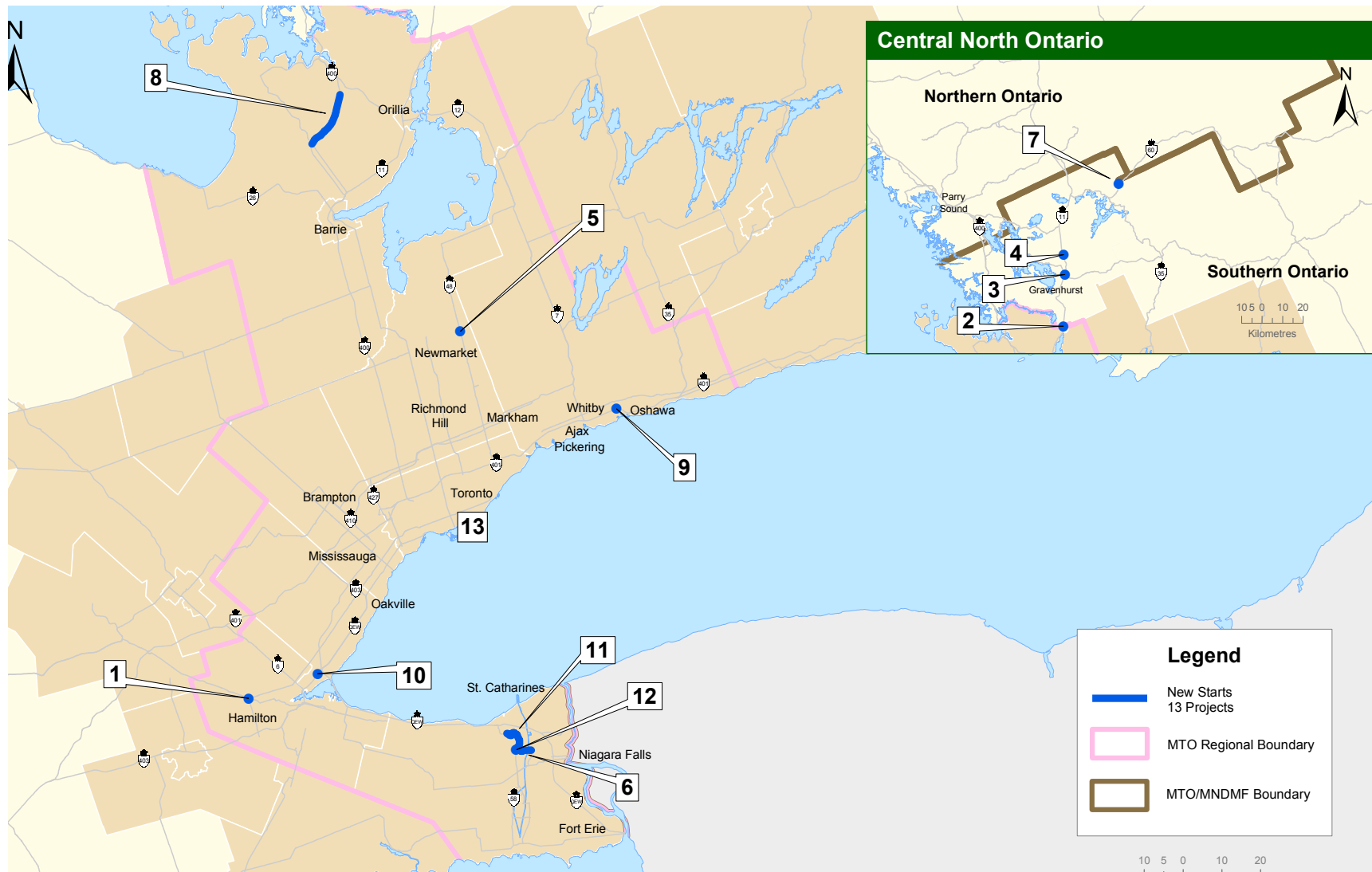
Map #	Hwy	Status	Location	Type of Work	Target Completion Date	Project Length (kms)
43	QEW	New	Credit River, Peel	Bridge rehabilitation	2012	n/a
44	QEW/406	New	Thompson Rd. & Chestnut St., Niagara	Bridge rehabilitation	2012	n/a
45	Various	Underway	Various locations, Hamilton, Halton, Peel (ISF)	Bridge rehabilitations	2011	n/a
46	Various	Underway	Various locations, York, Durham, Simcoe	Bridge rehabilitations	2011	n/a
47	Various	New	Various locations within Central Ontario	Selective resurfacing	2011	n/a
48	Various	New	Various locations within Central Ontario	Bridge rehabilitation	2011	n/a

NOTE : Project timing is subject to change based on funding, planning, design, environmental approval, property acquisition and construction requirements.



Rehabilitation Projects

Central Ontario Rehabilitation 2012



Rehabilitation Projects

Central Ontario Rehabilitation 2012

Map #	Hwy	Status	Location	Type of Work	Target Completion Date	Project Length (kms)
1	8	New	Hwy 5/8 (Peters Corners), Hamilton	Intersection improvements	2014	n/a
2	11	New	Severn River Bridge at Severn Bridge	Bridge rehabilitation	2012	n/a
3	11	New	South Muskoka River Bridge, south of Bracebridge	Bridge rehabilitation	2012	n/a
4	11	New	North Muskoka River Bridge NBL, north of Bracebridge	Bridge rehabilitation	2012	n/a
5	48	New	Herald Rd., York	Signal Installation	2012	n/a
6	58	New	Thorold Stone Rd. to Hwy 406, Niagara	Resurfacing	2012	4
7	60	New	Oxtongue Lake Narrows Bridge, East of Hwy 35	Bridge replacement	2013	n/a
8	400	New	Hwy 93 to Simcoe Rd. 19, Simcoe	Resurfacing	2014	15.3
9	401	New	Bloor St., Durham	Bridge rehabilitation	2013	n/a
10	403	New	King Rd., Waterdown Rd., Lemonville Rd., Snake Rd, Halton, Hamilton	Bridge rehabilitations	2013	n/a
11	406	New	Hwy 58 to Geneva St., Niagara	Resurfacing	2012	7.5
12	Various	New	Various locations within Central Ontario	Selective resurfacing	2012	n/a
13	Various	New	Various locations within Central Ontario	Bridge rehabilitations	2012	n/a

NOTE : Project timing is subject to change based on funding, planning, design, environmental approval, property acquisition and construction requirements.

Rehabilitation Projects

Central Ontario Rehabilitation 2013 to 2015

Hwy	Location	Type of Work	Project Length (km)
5	Spencer Creek, Hamilton	Bridge replacement	n/a
6	York Blvd., Hamilton	Bridge rehabilitation	n/a
8	Hwy 5 to west of Safari Rd., Hamilton	Resurfacing	13.5
9	Holland Canal, York	Bridge replacement	n/a
11	CNR/CPR Bridge north of Orillia, Simcoe	Bridge replacement	n/a
11	CNR Bridge, northbound near Washago, Simcoe	Bridge rehabilitation	n/a
11	Memorial Ave. to Laclie St., Simcoe	Resurfacing	8
11	Gull Lake Bridges, north of Gravenhurst	Bridge rehabilitations	n/a
11	Hawk Rock Cr, Kashe R, south of Gravenhurst	Culvert rehabilitation	n/a
11	Stephenson Rd. 12, northerly	Resurfacing	5.1
12	Sturgeon River, Simcoe	Bridge replacement	n/a
12	Atherley Rd. to south junction of Hwy 11/12, Simcoe	Resurfacing	5.3
12	Simcoe Rd. 37 to Hwy 400, Simcoe	Resurfacing	12.5
26	Nottawasaga River to Stayner east limits, Simcoe	Resurfacing	15.6
35	Hwy 118 northerly, Carnarvon	Resurfacing	7.9
35	North of Haliburton Rd. 13, Halls Lake	Culvert rehabilitation	n/a
58	Fork's Rd., Niagara	Bridge replacement	n/a
58	CNR Bridge, Niagara	Bridge replacement	n/a
89	Hwy 400 Interchange to Essa Township 8th Line, Simcoe	Resurfacing and Bridge Rehabilitation	7.6
118	Anson Cr and Black R Brs, W of Hwy 35	Bridge rehabilitations	n/a
140	CNR/CPR Bridge, Niagara	Bridge replacement	n/a
400	Hwy 89 to Innisfil Beach Rd., Simcoe (Phase 2 of 3)	Resurfacing, median barrier and drainage	10
400	North of Muskoka Road 5 northerly, Port Severn	Resurfacing/culvert rehabilitation	10.9
400	North of Canal Rd. to Hwy 89, Simcoe (Phase 1 of 3)	Resurfacing, median barrier and drainage	15
400	Hwy 400/401 Interchange, Toronto	Bridge rehabilitation	n/a

continued...

NOTE : Project timing is subject to change based on funding, planning, design, environmental approval, property acquisition and construction requirements.

Rehabilitation Projects

Central Ontario Rehabilitation 2013 to 2015

Hwy	Location	Type of Work	Project Length (km)
400	Coldwater River and North Simcoe County Rd. 23, Simcoe	Bridge rehabilitation	n/a
400	Severn River Bridge, Simcoe	Bridge replacement	n/a
400	Severn River Boat Channel Bridge, Simcoe	Bridge rehabilitation	n/a
400	Crown Hill, Simcoe	Bridge replacement	n/a
401	Cobbedick Rd., Durham	Bridge replacement	n/a
401	Hope Townline Rd., Durham	Bridge replacement	n/a
401	Hogg's Hollow, Toronto	Bridge rehabilitation, structural coating	n/a
401	Kipling Ave, Toronto	Bridge rehabilitation	n/a
401	Trafalger Rd. to Halton Rd. 25, Halton	Resurfacing/Bridge rehabilitation	9.2
401	Appleby Line, Halton	Bridge rehabilitation	n/a
401	First Line, Halton	Bridge rehabilitation	n/a
401	Jane St. to Avenue Rd., eastbound collectors, Toronto	Reconstruction/Bridge rehabilitation	7.4
401/403	Hwy 403 ramp to Hwy 401 eastbound collectors, Peel	Bridge rehabilitation	n/a
403	Various locations from Mohawk Road to Wilson St., Hamilton	Bridge rehabilitations	n/a
403	West of Hwy 6 to Aberdeen Ave., Hamilton	Resurfacing	5
403	Desjardin Canal, eastbound, Hamilton	Bridge rehabilitation	n/a
403	CNR Subway, Hamilton	Bridge rehabilitation	n/a
403	Plains Rd., Hamilton	Bridge rehabilitation	n/a
403	CPR Subway, Halton	Bridge rehabilitation	n/a
403	Burnhamthorpe Rd., Peel	Bridge rehabilitation	n/a
403	Central Parkway to Hwy 401/410, Peel	Resurfacing/Bridge rehabilitation	4.4
404	19th Ave., York	Bridge rehabilitation	n/a
404	McNicoll Ave., Toronto	Bridge rehabilitation	n/a
404	Van Horne Ave., Toronto	Bridge rehabilitation	n/a
404	John St., York	Bridge rehabilitation	n/a

continued...

NOTE : Project timing is subject to change based on funding, planning, design, environmental approval, property acquisition and construction requirements.

Rehabilitation Projects

Central Ontario Rehabilitation 2013 to 2015

Hwy	Location	Type of Work	Project Length (km)
404	John St., York	Bridge rehabilitation	n/a
406	Hwy 58 to south of Beaverdams Rd., Niagara	Resurfacing	3.4
406	QEW to Geneva St., Niagara	Resurfacing	6
410	Bovaird Dr. to Queen St., Peel	Resurfacing	3.3
427	Bloor St., Burnhamthorpe Rd., Rathburn Rd., Toronto	Bridge rehabilitation	n/a
427	The Queensway, Toronto	Bridge rehabilitation	n/a
427	Northbound off-ramp over Eglinton Ave., Toronto	Bridge rehabilitation	n/a
403/QEW	Ford Dr., Halton	Bridge rehabilitation	n/a
QEW	Central Ave. to south of Gilmore Rd., Niagara	Resurfacing	4.5
QEW	Burlington Bay Skyway Niagara bound, Halton, Hamilton	Bridge rehabilitation	n/a
QEW	Beck Rd., Niagara	Bridge rehabilitation	n/a
QEW	Bowen Rd., Niagara	Bridge replacement	n/a
QEW	Victoria Ave. to Seventh St., Niagara	Resurfacing	6
QEW	East of Victoria Ave. to west of Casablanca Blvd., Toronto bound, Niagara	Resurfacing	19
QEW	Christie St. and Maple Ave., Niagara	Bridge rehabilitation	n/a
QEW	Cawthra Rd., Peel	Bridge rehabilitation	n/a
QEW	Walkers Line, Halton	Bridge rehabilitation	n/a
QEW	Dorval Dr., Halton	Bridge rehabilitation	n/a
QEW	Burloak Dr., Halton	Bridge rehabilitation	n/a
QEW	Glendale Ave., Niagara	Bridge rehabilitation	n/a
QEW	Hwy 420 to Lyons Creek Rd., Niagara	Resurfacing/Bridge rehabilitation	7.44
Various	Various locations within Central Ontario	Bridge rehabilitations	n/a
Various	Various locations within Central Ontario	Selective resurfacing	n/a

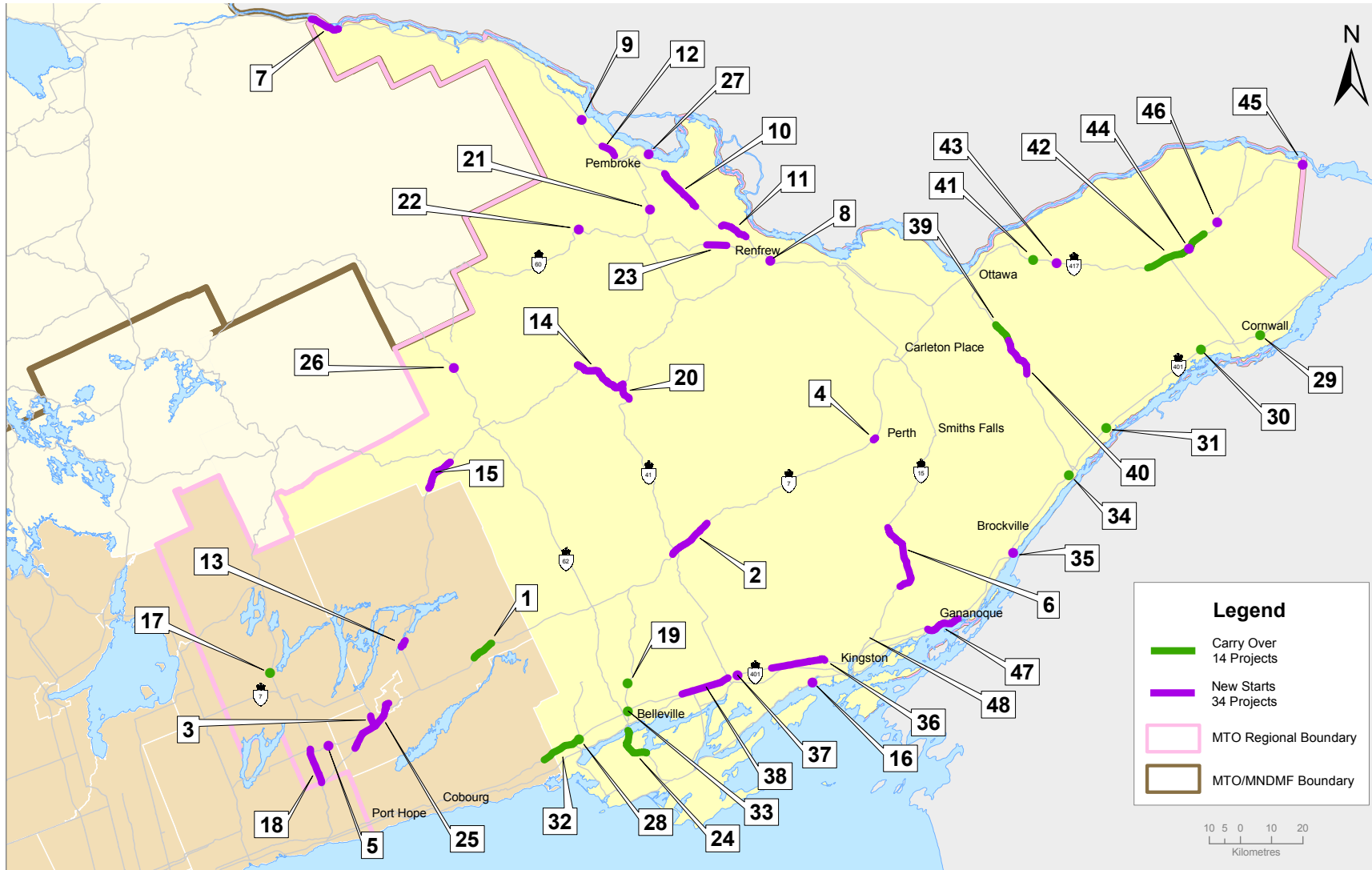
NOTE : Project timing is subject to change based on funding, planning, design, environmental approval, property acquisition and construction requirements.

This page appears blank intentionally.



Rehabilitation Projects

Eastern Ontario Rehabilitation 2011



Rehabilitation Projects

Eastern Ontario Rehabilitation 2011

Map #	Hwy	Status	Location	Type of Work	Target Completion Date	Project Length (kms)
1	7	underway	Havelock To Norwood	Resurfacing/passing lanes	2012	7.7
2	7	New	Scott Rd. westerly to Hwy 41, Kaladar	Resurfacing/passing lane	2012	15
3	7	New	Hwy 115 To Peterborough Rd 15, Peterborough	Resurfacing /structural culvert replacement	2011	3.6
4	7	New	Perth, east to west limits	Resurfacing	2011	1
5	7A	New	Fleetwood Creek Bridge	Bridge rehabilitation	2011	n/a
6	15	New	Seeley's Bay to Crosby	Resurfacing/passing lanes	2013	23.9
7	17	New	Deux Rivieres To Renfrew County Boundary	Resurfacing	2012	9.7
8	17	New	CNR Overhead, Renfrew (Site 29-193)	Bridge rehabilitation	2012	n/a
9	17	New	CPR Overhead, Petawawa	Bridge rehabilitation	2012	n/a
10	17	New	Renfrew Rd 40 to Cobden	Resurfacing	2011	15
11	17	New	Renfrew Rd. 4 to Renfrew Rd. 61	Resurfacing	2011	7.2
12	17	New	Renfrew Rd. 42 To Renfrew Rd. 26, Pembroke	Resurfacing	2012	5.4
13	28	New	Stoney Lake Rd. to Young's Point	Resurfacing/intersection improvements	2012	3.2
14	28	New	Renfrew Rd 514 To Denbigh	Resurfacing	2012	18.7
15	28	New	Peterborough/Halib To Halib/Hastings Bdy	Resurfacing	2011	11.6
16	33	New	Speers Blvd., Amherstview	Intersection improvements	2011	n/a
17	35	underway	Victoria Rd. 121, Long Beach	Intersection improvements	2011	n/a
18	35	New	Durham Rd. 20 to Hwy 7A	Resurfacing	2011	12.6
19	37	underway	Moira River Bridge, Belleville	Bridge rehabilitation	2011	n/a
20	41	New	Vennachar Junction northerly to Hwy 28	Resurfacing	2011	6.7
21	41	New	Snake River Bridge, Rankin	Bridge rehabilitation	2011	n/a
22	60	New	Bonnechere River Bridge, Deacon	Bridge rehabilitation	2012	n/a
23	60	New	Renfrew Rd. 61 to Douglas	Resurfacing	2011	23
24	62	underway	Crofton to Rossmore	Resurfacing	2010	12.6

continued...

NOTE : Project timing is subject to change based on funding, planning, design, environmental approval, property acquisition and construction requirements.



Rehabilitation Projects

Eastern Ontario Rehabilitation 2011

Map #	Hwy	Status	Location	Type of Work	Target Completion Date	Project Length (kms)
25	115	New	Hwy 35 to Airport Road	Resurfacing / concrete re-texturing	2011	23
26	127 & 28	New	Papineau Creek, Little Mississippi River Bridge, North of Maynooth	Bridge rehabilitaions	2012	n/a
27	148	New	Hazley Bay Bridge, Pembroke	Bridge rehabilitation	2012	n/a
28	401	New	Crystal Springs 1000, La Rue Mills Rd and Hwy 2 Underpasses	Bridge rehabilitations	2013	n/a
29	401	New	L&A Rd. 41 To Wymans Road, Napanee	Resurfacing	2012	15.7
30	401	underway	Trent River Bridge overpass, Trenton	Bridge rehabilitation/widening	2012	n/a
31	401	underway	CNR overhead and Boundary Rd. Bridge, Cornwall	Bridge replacements	2014	n/a
32	401	underway	Moulinette Rd. underpass, Long Sault	Bridge replacement	2012	n/a
33	401	underway	Carman Road Underpass, Iroquois	Bridge replacement	2012	n/a
34	401	underway	Trenton To Brighton	Resurfacing	2011	13.3
35	401	underway	CNR Overhead & Hwy 37 underpass, Belleville	Bridge rehabilitations	2012	n/a
36	401	underway	CPR Overhead, Prescott	Bridge rehabilitation	2011	n/a
37	401	New	Frontenac Rd 38 To Lennox & Addington Rd. 4, west of Kingston	New paved shoulders	2011	17.5
38	401	New	Palace Rd, Underpass, Napanee	Bridge rehabilitation	2012	n/a
39	416	underway	Roger Stewens Rd. to Centery Rd., Manotick	Resurfacing	2011	6.5
40	416	New	Rd 43 To Rd 6 -Roger Stevens Dr	Resurfacing	2012	13.3
41	417	underway	Kenyon-Roxborough Boundary Rd. to Limoges, westbound lanes	Resurfacing	2011	8.9
42	417	underway	Anderson Rd. underpass, Ottawa	Bridge rehabilitation	2011	n/a
43	417	New	Boundary Rd. Underpass, Ottawa	Bridge rehabilitation	2013	n/a
44	417	New	Tayside Municipal Drain	Culvert replacement	2011	n/a
45	417	New	Prescott Russell Rd 14 and Rd 10 Bridge Overpasses	Bridge Rehabiliations	2012	n/a
46	417	New	Skye Rd Overpass, St. Bernardin	Bridge rehabilitation	2011	n/a
47	1000	New	Resurfacing Thousand Islands Pkwy	Resurfacing	2011	11
48	various	New	Culverts various highways	Culvert replacements	2011	n/a

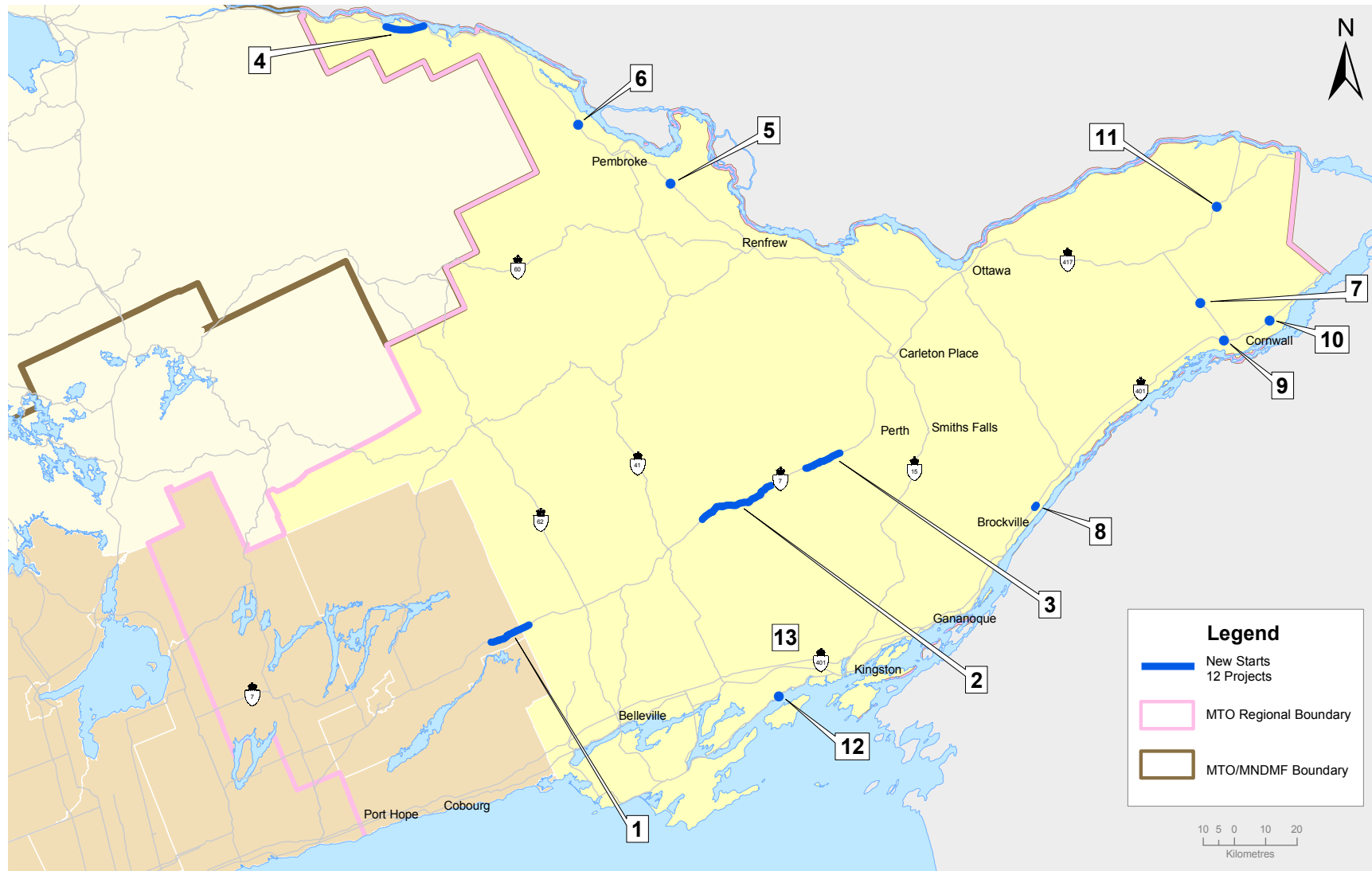
NOTE : Project timing is subject to change based on funding, planning, design, environmental approval, property acquisition and construction requirements.

This page appears blank intentionally.



Rehabilitation Projects

Eastern Ontario Rehabilitation 2012



Rehabilitation Projects

Eastern Ontario Rehabilitation 2012

Map #	Hwy	Status	Location	Type of Work	Target Completion Date	Project Length (kms)
1	7	New	Marmora to Havelock	Resurfacing	2012	13.6
2	7	New	Sharbot Lake westerly to Scott Rd.	Resurfacing	2014	24.9
3	7	New	Wemyss To Maberly	Passing lanes/intersection improvements	2012	12.2
4	17	New	Stonecliffe to Bissett Creek	Resurfacing	2012	12.5
5	17	New	Snake River Bridge, west of Cobden	Bridge rehabilitation	2012	n/a
6	17	New	Petawawa River Bridge, Petawawa	Bridge rehabilitation	2013	n/a
7	138	New	North Raisin River Bridges, St. Andrews	Bridge rehabilitations	2012	n/a
8	401	New	East of North Augusta Rd., Brockville	Noise barriers	2012	1
9	401	New	Cornwall Centre Rd Overpass	Bridge replacements	2013	n/a
10	401	New	Cornwall Area	Bridge rehabilitations	2014	n/a
11	417	New	Stormont Dundas and Glengarry Rd. 20, Casselman	Bridge rehabilitations	2013	n/a
12	Ferry Docks	New	Stella, Amherst Island and Millhaven/Hwy 33	Dock Replacements/road works	2014	n/a
13	various	New	Culverts various highways	Culvert Replacements	2012	n/a

NOTE : Project timing is subject to change based on funding, planning, design, environmental approval, property acquisition and construction requirements.

Rehabilitation Projects

Eastern Ontario Rehabilitation 2013 to 2015

Hwy	Location	Type of Work	Project Length (km)
7	Fall River Bridge, Sharbot Lake	Bridge rehabilitation	n/a
7	Crowe River Bridge, Marmora	Bridge rehabilitation	n/a
7A	Bethany to Hwy 35	Resurfacing/bridge rehabilitation	8.9
15	Leeds & Grenville Rd. 42 to Young's Hill Rd., Crosby	Resurfacing/intersection improvements	3
15	Hamlet of Portland	Resurfacing	3
16	CNR Overhead, Johnstown	Bridge rehabilitation	n/a
17	Renfrew Rd 26 To Petawawa Twp Boundary	Resurfacing	17
17	Renfrew Rd 24 To Renfrew Rd 42	Resurfacing	13
28	Hastings County Line to Bancroft southerly limits	Resurfacing	15.5
33	Collins Bay to Bath	Resurfacing	14.5
35	Trent Canal Bridge, Rosedale	Bridge rehabilitation	n/a
35	CKL 121 N'Ly To Coboconk	Resurfacing	20
41	Hydes Creek Bridge, Griffith	Bridge rehabilitation	n/a
62	Ashley St. To Hastings Rd. 14, Foxboro	Resurfacing/bridge rehabilitation/ intersection improvements	3.4
62	Quin-Mo-Lac Rd. To Madoc	Reconstruction/bridge rehabilitation/truck climbing lane	3.5
132	Constant Creek Bridge, Darcre	Bridge replacement	n/a
137	Canada/US Border to 1000 Island Parkway	Resurfacing	2.7
137	Thousand Island Parkway Bridge	Bridge rehabilitation	n/a
138	Monkland To Hwy 417	Resurfacing	17
148	CPR O'Head Bridge, Pembroke	Bridge rehabilitation	n/a
401	Cornwall to Morrisburg, various locations	Bridge rehabilitation	n/a

continued...

NOTE : Project timing is subject to change based on funding, planning, design, environmental approval, property acquisition and construction requirements.

Rehabilitation Projects

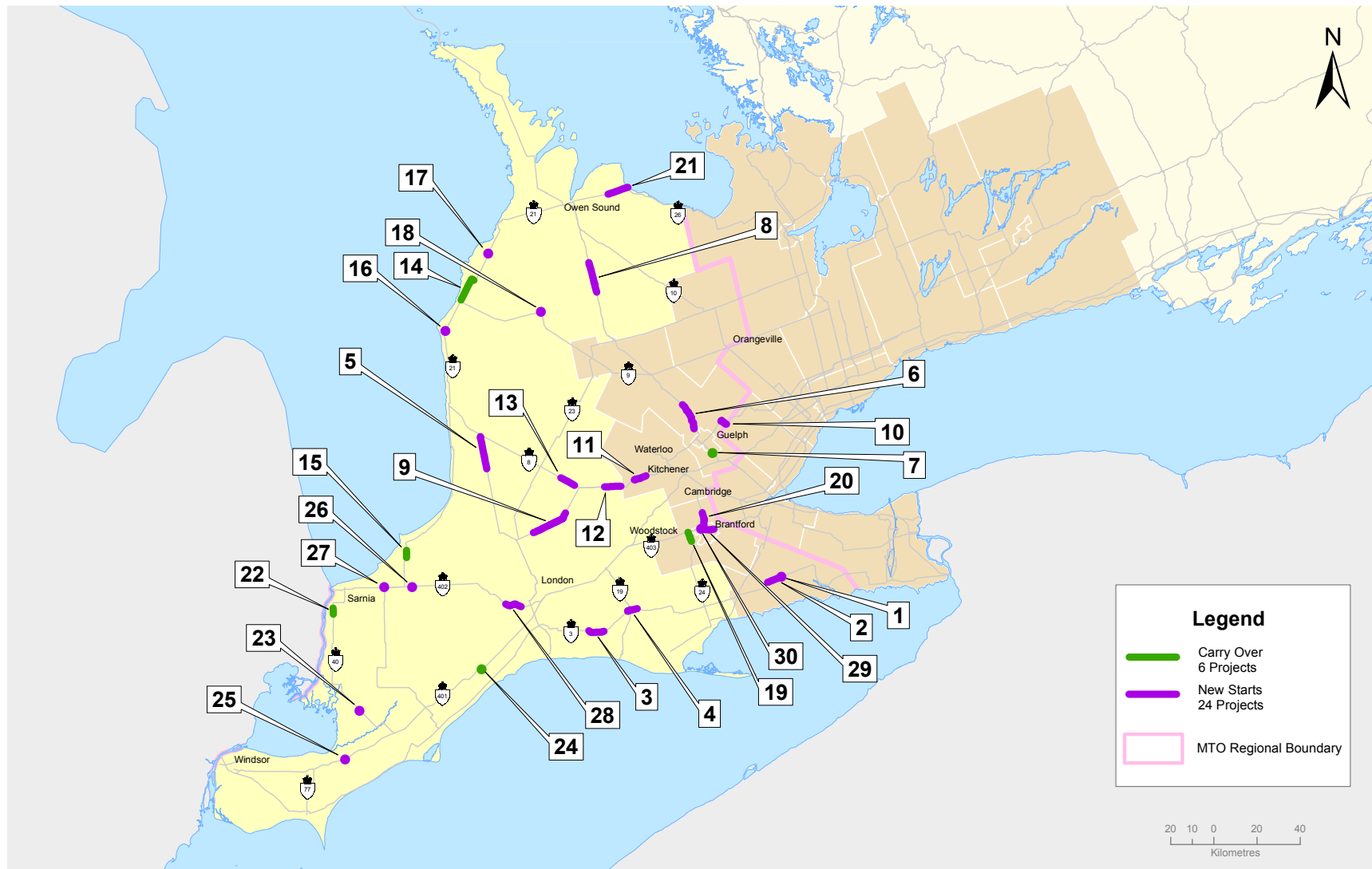
Eastern Ontario Rehabilitation 2013 to 2015

Hwy	Location	Type of Work	Project length (kms)
401	Napanee Area Bridges	Bridge rehabilitations	n/a
401	Moulinette Rd To Upper Canada Rd	Resurfacing	20
401	Cty Rd 45 Underpass, Division Street	Bridge rehabilitation	n/a
417	8th Line Rd. To Russell Rd., Ottawa	Resurfacing/bridge rehabilitations	7.1
417	Limoges Rd To 8th Line Rd, Ottawa	Resurfacing	20
various	Culverts various highways	Culvert replacements	n/a

NOTE : Project timing is subject to change based on funding, planning, design, environmental approval, property acquisition and construction requirements.

Rehabilitation Projects

Western Ontario Rehabilitation 2011



Rehabilitation Projects

Western Ontario Rehabilitation 2011

Map #	Hwy	Status	Location	Type of Work	Target Completion Date	Project Length (kms)
1	3	New	Grand River Bridge, Cayuga	Bridge Rehabilitation	2013	n/a
2	3	New	Dry Lake Rd. to Cayuga	Resurfacing	2011	6.9
3	3	New	Aylmer to Carter Rd.	Resurfacing	2011	7.2
4	3	New	John Pound Rd. to Simcoe St., Tillsonburg	Resurfacing	2011	4.9
5	4	New	Kippen to Clinton	Resurfacing / Culvert Rehabilitations	2011	15.2
6	6	New	Wellington Rd. 7 to Fergus	Resurfacing / Culvert Rehabilitations	2012	n/a
7	6	Underway	Hanlon Expressway, Guelph	Intersection Improvements	2011	n/a
8	6	New	Durham to Dornoch	Resurfacing	2011	14.4
9	7	New	Middlesex Rd. 50 to Perth Rd. 9, St. Marys	Resurfacing, Bridge / Culvert Rehabilitations	2013	17.1
10	7	New	Rockwood to Halton Rd. 32	Resurfacing / Bridge Rehabilitation	2012	3.8
11	7&8	New	Waterloo Rd. 51 to Fischer-Hallman Rd., Kitchener	Resurfacing	2011	5.6
12	7&8	New	Shakespeare to New Hamburg	Resurfacing	2012	7.6
13	8	New	Perth Rd. 135 to Stratford	Resurfacing / Bridge Rehabilitations	2011	7.3
14	21	Underway	Hwy. 9 to Tiverton	Resurfacing	2011	12.9
15	21	Underway	Shashawanda Creek Bridge, north of Forest	Bridge Replacement	2011	3.3
16	21	New	Amberley to Kincardine - Various Locations	Bridge Rehabilitations	2011	n/a
17	21	New	Underwood to Port Elgin	Culvert Rehabilitations	2011	n/a
18	21/9	New	Tiverton to Underwood & Kincardine to Bruce County Rd. 7	Culvert Rehabilitations	2011	n/a
19	24	Underway	Brant Rd. 53 to Hwy 403, west of Brantford	Resurfacing / Bridge Replacement	2011	4.7
20	24	New	Brant Rd. 23 to Brant Rd. 5, north of Brantford	Resurfacing	2011	5.6
21	26	New	Woodford to Meaford	Resurfacing / Culvert Rehabilitation	2012	9.8

continued...

NOTE : Project timing is subject to change based on funding, planning, design, environmental approval, property acquisition and construction requirements.



Rehabilitation Projects

Western Ontario Rehabilitation 2011

Map #	Hwy	Status	Location	Type of Work	Target Completion Date	Project Length (kms)
22	40	Underway	Rokeyby Line to Churchill Line, Sarnia	Resurfacing / bridge Rehabilitations	2011	2.8
23	40	New	Wallaceburg to Chatham-Kent Rd. 33	Bridge / Culvert Rehabilitations	2011	n/a
24	401	Underway	Blacks Rd., Furnival Rd., Dunborough Rd., Southminister Bourne, west of London	Bridge Rehabilitations	2011	n/a
25	401	New	Chatham-Kent Rd. 2 and Dillon Rd. underpass, east of Tilbury	Bridge Rehabilitations	2011	n/a
26	402	New	Warwick to Strathroy	Bridge Rehabilitations	2012	n/a
27	402	New	Waterworks Rd., Camlachie Rd., Oil Heritage Rd., Hwy 21, east of Sarnia	Bridge Rehabilitations	2011	n/a
28	402	New	Longwoods Rd. to Woodhull Rd., London	Resurfacing	2011	7.7
29	403	New	Paris Rd. to Garden Ave., Brantford	Resurfacing / Guide Rail Improvements	2011	6.6
30	401/403	New	Chatham-Kent, Elgin County, Brantford - Various Locations	Bridge Rehabilitations	2013	n/a

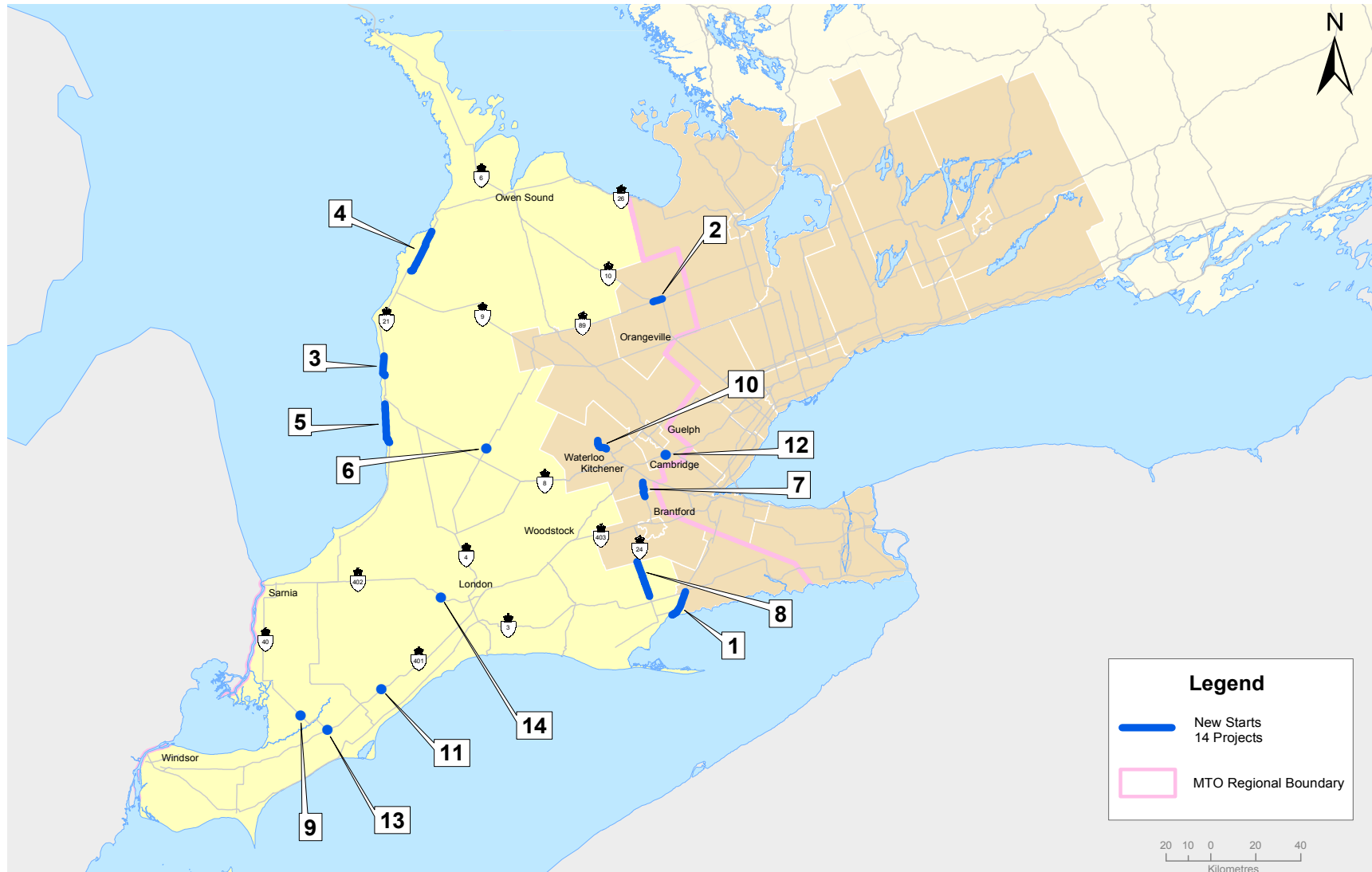
NOTE : Project timing is subject to change based on funding, planning, design, environmental approval, property acquisition and construction requirements.

This page appears blank intentionally.



Rehabilitation Projects

Western Ontario Rehabilitation 2012



Rehabilitation Projects

Western Ontario Rehabilitation 2012

Map #	Hwy	Status	Location	Type of Work	Target Completion Date	Project Length (kms)
1	6	New	Port Dover to Jarvis	Resurfacing / Bridge Rehabilitations	2012	12.6
2	10/89	New	Shelburne to Primrose	Resurfacing	2012	4.3
3	21	New	Sheppardton to Kingsbridge	Resurfacing	2013	9.4
4	21	New	Tiverton to Port Elgin	Resurfacing	2012	20.9
5	21	New	Bayfield to Goderich	Resurfacing / Culvert Rehabilitation	2012	17.7
6	23	New	Thames River Bridge, Flat Creek Bridge, Hwy 23, north of Mitchell	Bridge / Culvert Rehabilitations	2012	n/a
7	24	New	Glenn Morris Rd. to Waterloo Rd. 43, Cambridge	Resurfacing / Culvert Rehabilitation	2012	6.6
8	24	New	Simcoe to Scotland	Resurfacing / Bridge/ Culvert Rehabilitations	2013	16.5
9	40	New	Chatham to Wallaceburg	Intersection Improvements, Bridge / Culvert Rehabilitations	2012	n/a
10	85	New	Lancaster St. to Waterloo Rd. 15, Waterloo	Resurfacing / Bridge Rehabilitations	2013	8.1
11	401	New	Drake Rd., Bloomfield Rd., Kenesserie Rd., Duart Rd., Chatham-Kent	Bridge Rehabilitations	2012	n/a
12	401	New	Wellington Rd. 32, Wellington Rd. 35, Hwy 6, Guelph	Bridge Rehabilitations	2012	n/a
13	40/401	New	Hwy 40 Communication Rd., Chatham	Bridge Replacement, Interchange improvement	2013	n/a
14	402	New	Middlesex Rd. 81, Strathroy	Culvert Rehabilitation	2013	n/a

NOTE : Project timing is subject to change based on funding, planning, design, environmental approval, property acquisition and construction requirements.

Rehabilitation Projects

Western Ontario Rehabilitation 2013 to 2015

Hwy	Location	Type of Work	Project length (kms)
3	Hwy 19/Vienna Rd., Tillsonburg	Intersection Improvements	n/a
3	Canfield, Haldimand County	Resurfacing	0.7
3	St. Thomas Expressway	Bridge Rehabilitations	n/a
3	Delhi to Simcoe	Resurfacing	14
4	Ausable River Bridge, south of Hensall	Bridge Rehabilitation	n/a
6	Springmount to Hepworth	Resurfacing, Bridge / Culvert Rehabilitations	15.3
6	Chatsworth to Owen Sound	Resurfacing	11.3
6	Hepworth Northerly	Culvert Rehabilitations	n/a
6	Morrison to Hwy 401	Resurfacing	1.5
6	Hanlon Expressway - Hwy 401 to Woodlawn Ave.	Resurfacing	15.5
7	Perth Rd. 9 to Stratford	Resurfacing / Culvert Rehabilitations	9
9	Kincardine to Bruce Rd. 7	Resurfacing	8
21	Amberley to Kincardine	Resurfacing	14.7
21	Grand Bend to Hendrick Rd.	Resurfacing / Culvert Rehabilitations	11.9
21	Port Elgin to Southampton to Bruce Rd. 10	Resurfacing	21.3
23	Whalen Corners to Woodham	Culvert Rehabilitations	n/a
40	Churchill Rd. to McGregor Rd., Sarnia	Resurfacing	3.2
85	Krug St. to Lancaster St., Kitchener	Resurfacing / Bridge Rehabilitations	1.8
89	Mt. Forest to Shelburne	Bridge / Culvert Rehabilitations	n/a
401	Tilbury to West Lorne	Selective Resurfacing	n/a
401	Hwy 4 to Hwy 402, London	Resurfacing	6.1
401	London to Wellington County/Halton Regional Boundary	Resurfacing	n/a
402	Middlesex Rd. 2 to Hwy 401, London	Bridge Rehabilitations	n/a
402	Hwy 21 to Kerwood Rd., Watford	Resurfacing	21.3
403	Paris Rd. to Wayne Gretzky Pkwy., Brantford	Bridge Rehabilitations	n/a
403	Grand River Bridge, west of Brantford	Bridge Rehabilitation	n/a

NOTE : Project timing is subject to change based on funding, planning, design, environmental approval, property acquisition and construction requirements.

PLANNING FOR THE FUTURE

Projects Beyond 2015

The Southern Highways Program outlines the projects that will be constructed over the next five years. These projects will ensure that we continue to support growth and address existing highway congestion by expanding and enhancing safety and efficiency on our highways.

The government is aware of the need to plan for the long-term to ensure a first-class transportation infrastructure for the future. The Ministry of Transportation continuously evaluates anticipated transportation needs. Potential future directions include:

- Identifying and implementing transportation solutions on strategic transportation corridors
- Evaluating options for transit and other modes of transportation
- Optimizing, expanding or extending existing highways
- Planning new multimodal transportation corridors

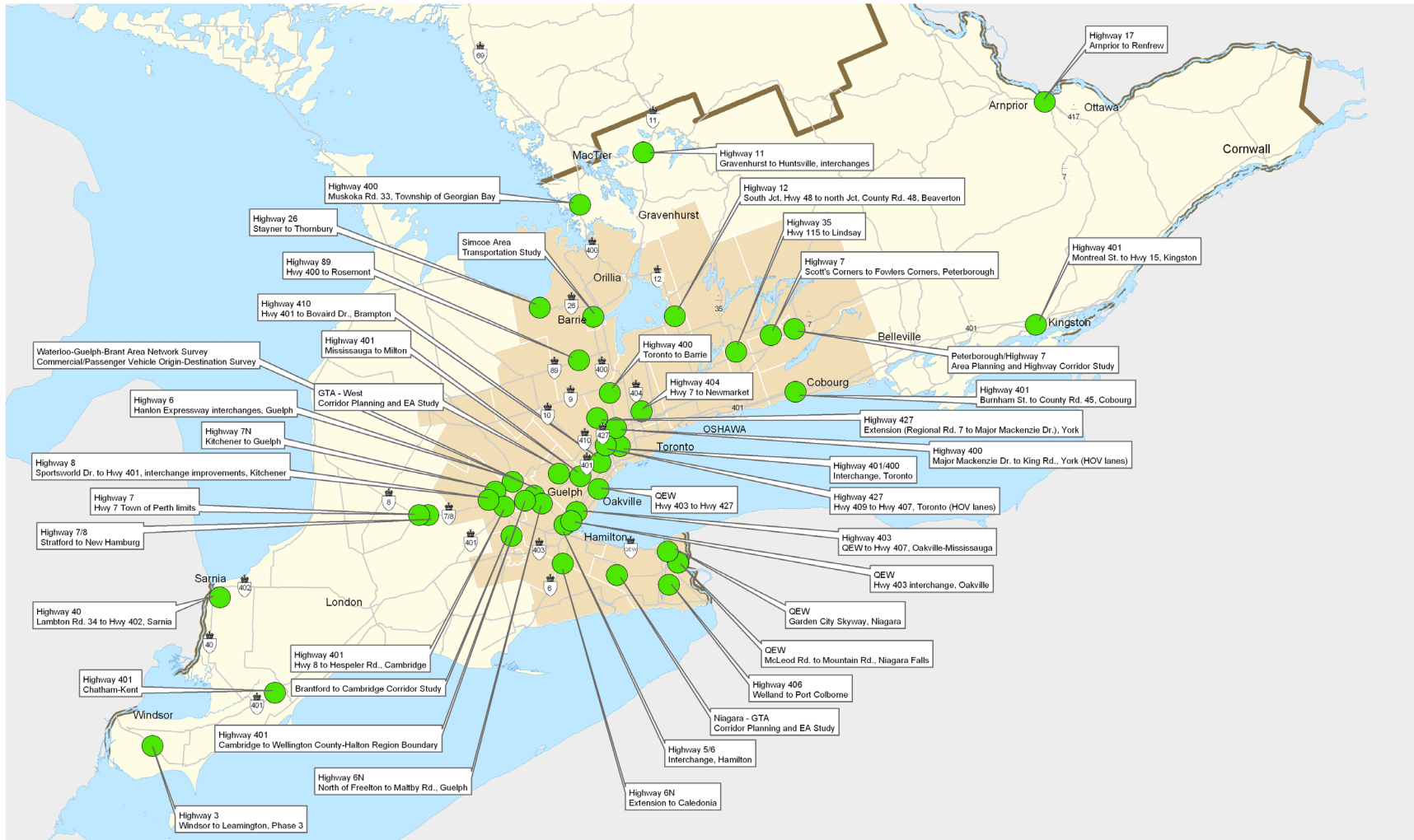
Identified on the following page and on the “Planning for the Future” map are some projects in the planning stages to support growth and economic activities, improve traffic flow and enhance safety in southern

Ontario. While the list includes projects that are not part of the current five-year construction plan, they are subject to further study and prioritization and may be considered for future construction.

In addition, the Ontario government is working in partnership with Canada, the United States and the State of Michigan on the Detroit River International Crossing, and is committed to working with these partners to deliver a new river crossing, access road and inspection plazas by 2014.

Planning for the Future

Future Southern Ontario Projects



Planning for the Future

Future Southern Ontario Projects

Area Planning Studies	Description
GTA - West	Corridor Planning and EA Study
Niagara to GTA	Corridor Planning and EA Study
Peterborough / Hwy 7	Area Planning and Highway Corridor Study
Simcoe Area System Review	Area Transportation Study
Waterloo--Guelph-Brant Area Network Survey	Commercial / Passenger Vehicle Origin-Destination Survey
Brantford to Cambridge	Corridor Study

Hwy	Description
3	Windsor to Leamington, Phase 3
5/6	Interchange, Hamilton
6	Hanlon Expressway interchanges, Guelph
6N	Extension to Caledonia
6N	North of Freilton to Maltby Rd., Guelph
7N	Kitchener to Guelph
7	Hwy 7, Town of Perth limits
7	Scott's Corners to Fowlers Corners, Peterborough
7/8	Stratford to New Hamburg
8	Sportsworld Dr. to Hwy 401, interchange improvements, Kitchener
11	Gravenhurst to Huntsville, interchanges
12	South Jct. Hwy 48 to north Jct. County Rd. 48, Beaverton
17	Arnprior to Renfrew
26	Stayner to Thornbury

Hwy	Description
35	Hwy 115 to Lindsay
40	Lambton Rd. 34 to Hwy 402, Sarnia
89	Hwy 400 to Rosemont
400	Toronto to Barrie
400	Major Mackenzie Dr. to King Rd., York (HOV Lanes)
400	Muskoka Rd. 33, Township of Georgian Bay
401/400	Interchange, Toronto
401	Montreal St. to Hwy 15, Kingston
401	Burnham St. to County Rd. 45, Cobourg
401	Mississauga to Milton
401	Cambridge to Wellington County / Halton region boundary
401	Hwy 8 to Hespeler Rd., Cambridge
401	Chatham - Kent
403	QEW to Hwy 407, Oakville / Mississauga
404	Hwy 7 to Newmarket
406	Welland to Port Colborne
410	Hwy 401 to Bovaird Dr., Brampton
427	Hwy 409 to Hwy 407, Toronto (HOV lanes)
427	Extension (Regional Road 7 to Major Mackenzie Dr.), York
QEW	McLeod Rd. to Mountain Rd., Niagara Falls
QEW	Garden City Skyway, Niagara
QEW	Hwy 403 interchange, Oakville
QEW	Hwy 403 to Hwy 427

NOTE : Project timing is subject to change based on funding, planning, design, environmental approval, property acquisition and construction requirements.

Planning for the Future

Area transportation studies and surveys are conducted during the **planning stage** to identify transportation system problems or deficiencies and possible future actions to address these issues. These take a long range outlook and a multimodal transportation approach to identify transportation needs and opportunities from an area or system-wide perspective. There are several planning studies currently underway. These include the Niagara to Greater Toronto Area (Niagra GTA) and Greater Toronto Area West (GTAW) Planning and Environmental Assessment (EA) Studies, and the Peterborough Area and Highway 7 Corridor Study. Part 1 of the Simcoe Area Transportation Review is underway to collect information on travel patterns and volumes for people and goods movement in Simcoe County and surrounding area.

The Highway Planning Process

Planning, design and construction can take up to eight or more years for highway expansion and 10 years or more to build new highways. While this process seems lengthy, it is necessary to: ensure the appropriate solution is selected; reduce the environmental impact of construction; protect the rights of property owners; and ensure design and construction standards are met.

The area transportation studies that are conducted during the planning stage may be carried out within the Environmental Assessment (EA) process, or lead to the initiation of an EA process in which alternatives are reviewed in greater detail. All public undertakings are subject to the Environmental Assessment Act. Federal EA approvals may also be required. An EA is a decision-making process that considers all impacts to the environment: natural, economic and social.

Smaller highway projects, with predictable and manageable environmental impacts, are subject to a Class EA process that typically takes one to three years to complete. A Class EA is an MTO-led process that does not require Ministry of the Environment (MOE) approval.

Larger and more complex projects such as new transportation corridors with potential for greater environmental impacts, are subject to an Individual EA process that requires formal MOE review and Ministerial/Cabinet approval. This process typically takes up to five years to complete and may involve analysis of all transportation alternatives (road, transit, rail, marine, air, and active transportation) and alternative route locations for new transportation alternatives.

Both Individual and Class EA projects are subject to MTO's Class EA process for the design stage.

The Ministry of Transportation follows the Class EA and Individual EA processes as directed by the Ontario Environmental Assessment Act. A critical component to these EA processes is consultation with the public during decision-making. In particular, the ministry works to fulfill our duty to consult with Aboriginal communities when proposing and undertaking work that may affect Aboriginal and/or Treaty rights or if they express interest in the project. As part of our consultation process, MTO shows respect and consideration for Aboriginal culture, traditions and customs.

Planning for the Future

The Highway Planning Process

Preliminary design studies include the environmental assessment of broad transportation alternatives and specific highway improvement options.

The next stage, **detail design**, undertakes engineering tasks such as surveying, testing for soil conditions, determining construction material requirements, and designing interchanges, bridges, and culverts.

Once a project EA has been approved, **property acquisition** can begin. This can take up to 18 months if expropriation becomes necessary or longer yet, should a property owner appeal expropriation through a Hearing of Necessity. In the Hearing, the Crown must prove sound justification for expropriation.

Timing and duration of **highway construction** depends on numerous factors, including size and complexity of the project, funding availability, property availability, and timing of environmental clearances and permits.

Typically, a new four-lane highway is completed in phases, taking two to three years for each section. Timing and duration can also be affected by special circumstances such as legislation protecting fish spawning or bird nesting periods. In urban settings, much work is done at night or off-peak hours to minimize traffic delays.

During all stages of highway planning, design and construction, the Ministry of Transportation works collaboratively with a wide range of provincial and federal departments; municipalities; transportation, economic and environmental interest groups; First Nation communities; and the general public.

This page appears blank intentionally.





Ontario