

415 Raven



Raven. Adult. 5 de mayo.

RAVEN (*Corvus corax*)

IDENTIFICATION

54-67 cm. Black plumage; wedge-shaped tail; black bill and legs.



Raven. Pattern of bill and tail.



SIMILAR SPECIES

This species recalls that of **Carrion Crow**, which has a smaller size (43-47 cm) and tail with rounded edge.



Carrion Crow

SEXING

Plumage of both sexes alike.

AGEING

3 types of age can be recognized:

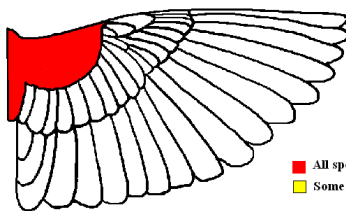
Juvenile with fresh plumage; duller black feathers; inside of upper mandible pinkish.

1st year autumn/2nd year spring with moult limit between glossy body feathers and lesser coverts and duller juvenile feathers of wing and tail; worn flight and tail feathers; inside of upper mandible with pinkish areas.

Adult with glossy black plumage on wing and tail, without moult limits; inside of upper mandible dark

MOULT

Complete **postbreeding** moult, usually finished in November. Partial **postjuvenile** moult, mostly confined to body feathers and lesser and median coverts; some specimens have finished in early August.



R a v e n .
Extent of postjuvenile moult.

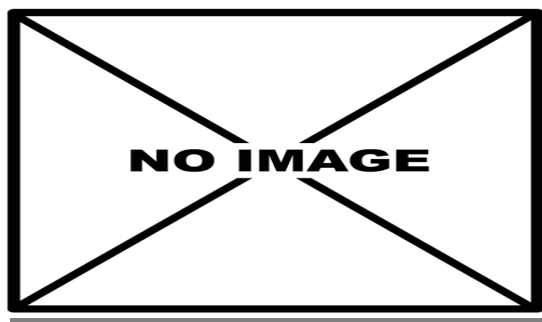
■ All specimens
■ Some specimens

PHENOLOGY

I	II	III	IV	V	VI	VII	VIII	IX	X	XI	XII

STATUS IN ARAGÓN

Resident. Widely distributed throughout the Region, absent only in small areas in Caspe, La Litera and southwestern Teruel.

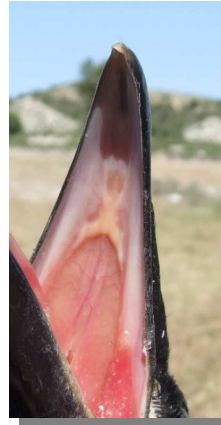


Raven. 2nd year ()

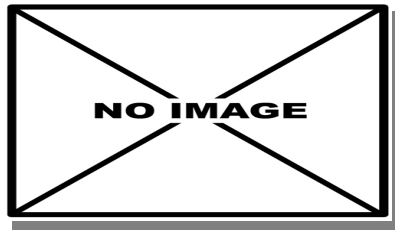
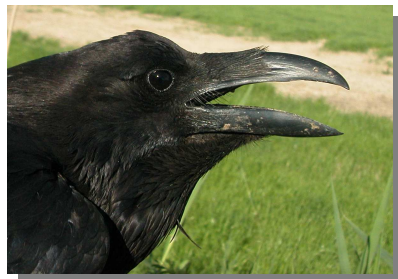
415 Raven



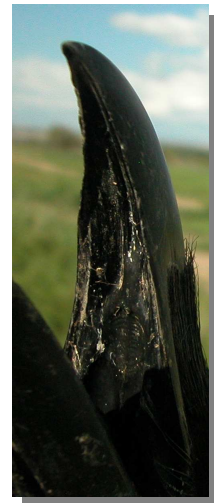
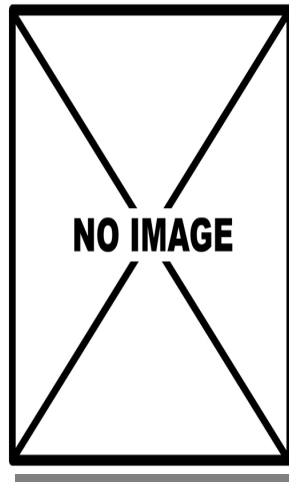
Raven. Juvenile (28-VII)



Raven. Inside of upper mandible: left young (29-V); right juvenile (28-VII).



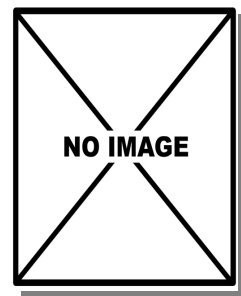
Raven. Iris colour: top adult (05-V); bottom 2nd year ().



Raven. Inside of upper mandible: left 2nd year (); right adult (05-V).

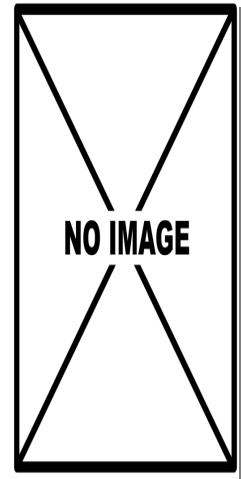
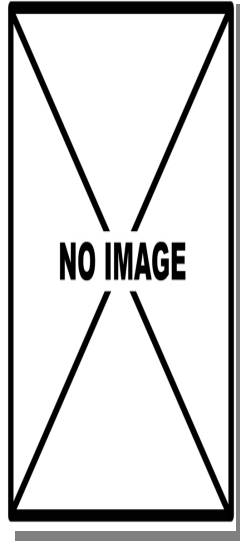


Raven. Iris colour: top juvenile (28-VII); bottom young (29-V).



Raven. Breast pattern: top left adult (05-V); top right 2nd year (); left juvenile (28-VII).

415 Raven



Raven. Tail wear: top left adult (05-V); top right 2nd year (); left juvenile (28-VII).

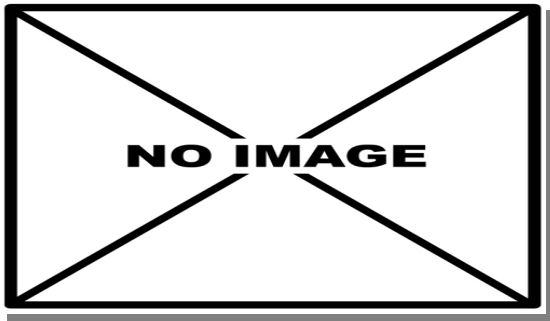


Raven. Upperpart pattern: top left adult (05-V); top right 2nd year (); left juvenile (28-VII).



Raven. Adult: pattern of alula (05-V).

415 Raven



Raven. Juvenile: pattern of wing (28-VII).

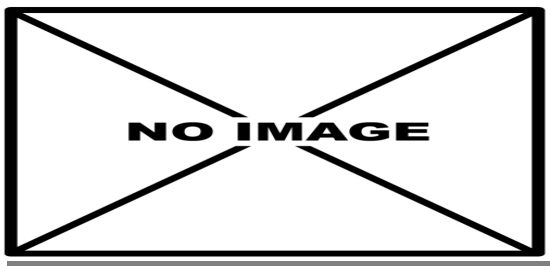
Raven. 2nd year: pattern of alula (05-V).



Raven. Juvenile: pattern of alula (28-VII).



Raven. Adult: pattern of wing (05-V).



Raven. 2nd year: pattern of wing (05-V).