



This great walk goes to some amazing places. Pindar Lookout, Pool and Cave are the greatest features of the walk, with each feature deserving of its own unique track. The walk takes off from the tiny Wondabyne Station to climb onto the plateau and continues along the ridge line to Mt Pindar. The walk passes over rocky terrain with many spider webs across the track. Unless you come by water, the only access is by train, you cannot drive to the start of this walk.

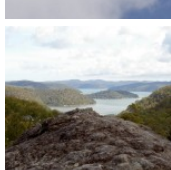
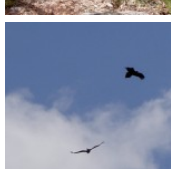
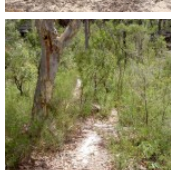
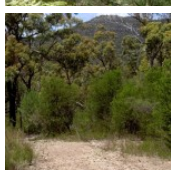
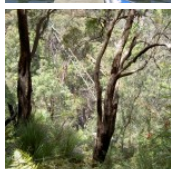
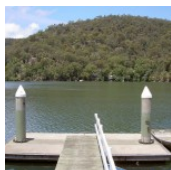
Brisbane Water National Park

**Length:** 11.5 km  
**Time:** 6 hrs  
**Climb:** 493 m  
**Style:** Return  
**Rating:** Route: Hard  
**Where:** 10.8 km SW of Gosford  
**Transport:** train



Visit [www.wildwalks.com](http://www.wildwalks.com) for more info

*Side trips and Alternate routes mentioned in these notes are not included in the tracks overall rating, distance or time estimate. The notes only describe the side trips and Alternate routes in one direction. Allow extra time for resting and exploring areas of interest. Please ensure you and your group are well prepared and equipped for all possible hazards and delays. The authors, staff and owners of wildwalks take care in preparing these notes but will not accept responsibility for any inconvenience, loss or injury sustained by using these notes or maps. Please take care and share your experience through the website. GPS for start and end of this walk: -33.4921,151.257*



## Wildwalks



The State Government is allowing Recreational Hunting in our National Parks

This poses a serious threat to the environment and visitor safety

Help stop the madness by writing a [quick letter](#).

Thanks for your help

## Wondabyne

Wondabyne is situated in Brisbane Waters National Park on the banks of Mullet River, which feeds into the Hawkesbury River north of Brooklyn. The area is defined by the National Park's flora and fauna, the quarry, railway station and a few houses sitting above the water around the river. The quarry produced sandstone building materials, used in the construction of the National War Memorial in Canberra. More recently, in 2000, the quarry was re-opened for restoration of St Mary's Cathedral spire in Sydney. Wondabyne Station, named after the nearby Mt Wondabyne, was built in 1889 and exclusively used for the quarry - it was then known as Mullet Creek Station. The station is one of the smallest on the line and one of very few railway stations in a NSW National Park. When you catch the train to Wondabyne, let the guard know you want to get off at Wondabyne Station, otherwise the train will not stop. Travel in the last carriage as the platform is very short. To catch the train from Wondabyne, wave to the driver.

### Wondabyne Station to Clearing above Wondabyne Station 0.4km 10 mins

(From S) From the north-bound platform of Wondabyne Station, this walk follows the 'The Great North Walk' sign off the southern end of the platform, keeping the train lines (and water) to your left. The track soon leads past a strangler fig and a large boulder then bends right and heads up a timber staircase with a metal landing at the top. The track winds steeply uphill, up a series of timber and rock steps for just over 200m to pass a filtered view of the cranes (right), down at the old Gosford Quarry. Here the walk continues a bit more steeply uphill for another 150m, up a series of rock steps, and then, soon after passing up the carved steps in a cleft in a rock, the track flattens out and comes to a clearing at the end of a management trail, marked with a 'Brisbane Water National Park' sign.

### Clearing above Wondabyne Station to Eastern end of the Pindar Cave Track 1km 15 mins

(From 0.44 km) Continue straight: From the clearing, this walk follows the wide management trail uphill past the 'Brisbane Water National Park' sign. The trail leads up quite steeply for about 250m, where the trail bends right then leads gently uphill for about 600m. Here the trail leads up a short but quite steep hill, to then bend left and, about 150m later, come to an intersection with the Pindar Cave track (that leads over a rock platform, on your left), marked with a GNW arrow post (on your right).

### Int. Rifle Range Service Track and Pindar Cave Track to Mt Pindar Lookout 3.5km 1 Hrs 10 mins

(From 1.47 km) Turn left: From the intersection, this walk follows the wide track to the west, keeping the large rocky outcrop to the right. The trail soon narrows to become an overgrown track and undulates for some time, through some rocky and dense scrub. Eventually, the track swings around to the north and arrives at the Mt Pindar Lookout, indicated by arrows marked in the surface that lead to the lookout, with views of Mooney Mooney, and Mooney Mooney Creek.

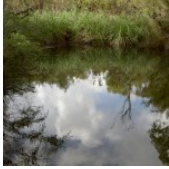
## Mt Pindar lookout

From the rocky perch of Mt Pindar, Brisbane Waters National Park, views over Mooney Mooney and Mooney Mooney Creek can be enjoyed. This is an unofficial lookout, with no fencing or other facilities.



### Mt Pindar Lookout to Pool 0.5km 5 mins

(From 4.97 km) Turn right: From the lookout, the walk follows the bush track north, around the edge of the ridge. The track then descends north-west into the valley below, continuing through areas of thick vegetation, until emerging onto a clearing next to a pool of water.



### Pindar Pool

The pool between Mt Pindar and Pindar Cave is an ephemeral (short-lived, unreliable) waterhole. The pool is a refreshing place for a swim when full, with many birds enjoying the area too. The pool is a 10m by 5m tub which is quite deep. Being ephemeral, it is not always full of water.



### Pool to Pindar Cave 0.3km 5 mins

(From 5.45 km) Turn left: From the pool, the walk follows the bush track west, into a small sandy clearing. The track then turns right, below a rocky outcrop on the left, and follows the rocky outcrop for approximately 100m to the large overhang of rock, Pindar Cave.



### Pindar Cave

Pindar Cave, Brisbane Waters National Park, is a large expanse of overhanging rock. The cave is made by a sandstone overhang of 15m, which spans approximately 50m along the hillside. The floor of the cave is a good spot for a sleep, while the roof of the cave is black from many campfires. Access to water is relatively good, however the waterfall and nearby pool are ephemeral (transient) streams with irregular and unreliable water patterns.



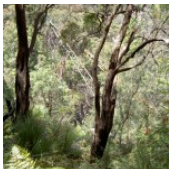
### Pindar Cave to Waterfall 0.6km 10 mins **Optional Side Trip:**

(From 5.77 km) Continue straight: From Pindar Cave, this walk heads north-west, parallel to a rocky outcrop. After following the cliff line for a little while, the track bends slightly to the right, and heads north-west, crossing several rocky outcrops, going down towards the creek line. The track then drops down some rockshelves to the waterfall.



### Pindar Waterfall

Pindar Waterfall, Brisbane Waters National Park, is a rocky outcrop from which a vegetation enclosed stream runs over and through. The waterfall is not a picturesque spot, with the water running through dense vegetation and cracks in the boulders to pools out-of-sight. The waterfall is fed by an ephemeral stream which will does not guarantee it as a source of water. From the rocky outcrop of the waterfall, views over the valley below can be observed.



This is a 'Return' style walk - retrace your steps back to the beginning when you are ready.

### A list of paper topographical maps that cover this walk

[Gunderman](#) 1:25 000 Map Series

[Gosford](#) 1:25 000 Map Series

Gosford 1:100 000 Map Series



### Nearby outdoor and camping stores

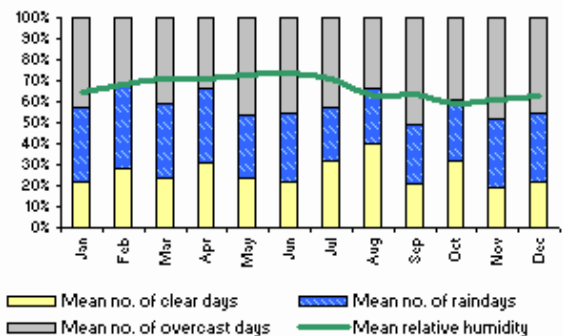
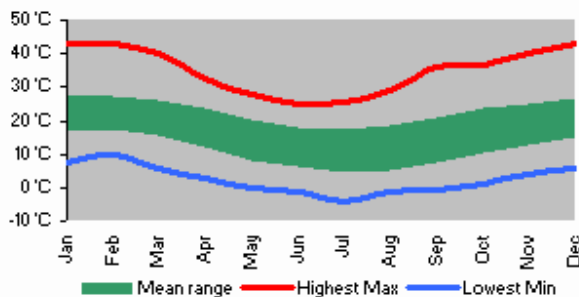
**Mannings Sports** 172 Mann St Gosford (02) 4325 1617

**BCF Australia Pty Ltd** 354 Manns Rd Gosford West (02) 4322 5833

**Camping World Shop** 18, 482 Pacific Hwy Wyoming (02) 4324 6515

**Boots Great Outdoors** 201 The Entrance Rd Erina (02) 4367 0396

**Paddlecraft** 3B / 1714 Pittwater Road Bayview 02 9997 8015



This space is available for advertising



Full colour  
Great photos



Give the joy of walking to a friend  
(and support wildwalks)

[www.wildwalks.com/books.html](http://www.wildwalks.com/books.html)



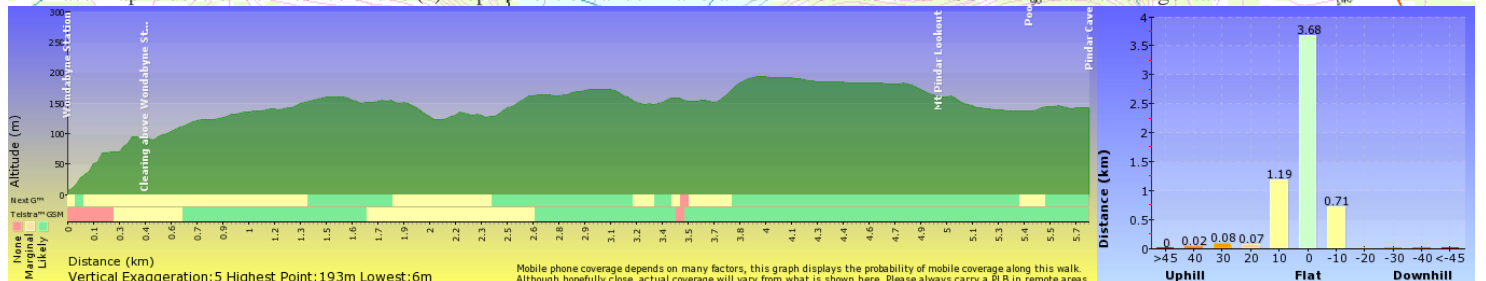
A walk for every body



Map Scale 1 km



Base map is used under licence and is (c) Department of lands Panorama Avenue Bathurst 2795 [www.lands.nsw.gov.au](http://www.lands.nsw.gov.au)



Mobile phone coverage depends on many factors, this graph displays the probability of mobile coverage along this walk. Although hopefully close, actual coverage will vary from what is shown here. Please always carry a PLB in remote areas.